

---

**Central Dudley Area Committee – 11 September 2007**

**Report of the Director of the Director of Children's Services**

**Transforming Secondary Education**

**Purpose of Report**

1. The Department for Children, Schools and Families (DCSF) is preparing for the next group of local authorities to be included in the national Building Schools for the Future (BSF) programme. This report provides an opportunity for Area Committees to contribute to Dudley's revised strategy to secure major capital investment in secondary education. It is extremely important that Dudley is able to demonstrate that the strategy will be effective in meeting local and national priorities and that it is widely supported by Dudley Metropolitan Borough Council and the diverse range of partners involved in improving outcomes for children, young people and families.

**Background**

2. In 2003 the Department for Education and Skills (DfES) announced Building Schools for the Future, the largest ever capital investment programme intended to transform the outcomes of secondary education for children and young people through the creation of "world-class" schools, fit for 21<sup>st</sup> Century learning. Local authorities were invited to submit expressions of interest in taking part in this 15 year national programme.
3. In December 2003 Dudley submitted an expression of interest which set out its vision for the future of secondary education within the Borough. The DfES announced the first group of four pathfinder authorities and 10 Wave 1 authorities in 2004. The DfES concentrated on local authorities with:
  - low standards of attainment at GCSE
  - high levels of deprivation
  - intervention following a very poor inspection report
  - a large number of secondary schools.

Dudley's prospects of inclusion in the early waves of BSF were not high.

4. In February 2005 Dudley received indicative information from the DfES that inclusion was likely to be in Wave 7 (2010/11), Wave 8 (2011/12) or Wave 9

(2012/13). Inclusion in the programme would be dependent on Dudley being able to demonstrate a clear and effective strategy for transforming education across the Borough and the capacity to deliver.

5. The DCSF have recognised that local authorities may wish to revise their strategies from those set out in the 2003 expressions of interest. Dudley continues to work with the DCSF to secure inclusion in the BSF programme at the earliest opportunity. It has been particularly important to respond to the experiences of local authorities already in the BSF programme and ensure Dudley's approach is appropriate. On 16 August, DCSF confirmed in a letter to Dudley the provisional timetable as:

- DCSF consultation on management of Wave 7 later this year
- guidance to Wave 7 authorities issued in 2008
- confirmation of inclusion (subject to ministerial decisions) by end of 2008.

6. In the same letter, the DCSF also stated;

"Lessons learned from earlier waves of BSF indicate that early preparation is key to effective delivery of projects and your work to date undertaking consultation with key partners and stakeholders and in the consideration of re-allocation of funding needed to resource the project at an early stage, will prove invaluable when we move onto the next phase of the programme".

This confirms that Dudley is taking the right steps in preparing for this major programme. The early information from Dudley will also help the DCSF in managing the overall programme and HM Treasury in terms of future financial arrangements.

7. Preparations to date include:

- Cabinet approval of corporate governance arrangements for Learning for the Future (now Investing in the Future -Transforming Secondary Education) June 2005. These arrangements have operated at a variety of levels. Confirmation of these arrangements and final establishment of the arrangements will be required when the project plan is considered by Cabinet, other partners/stakeholders and the DCSF
- dissemination of data and other information including establishment of web pages on [www.dudley.gov.uk/education-and-learning/schools-and-colleges/learning-for-the-future/transforming-secondary-education](http://www.dudley.gov.uk/education-and-learning/schools-and-colleges/learning-for-the-future/transforming-secondary-education)
- initial discussions with secondary schools and other partners including Dudley PCT, West Midlands Fire Service and many others
- timetable to submission of revised draft strategy to support detailed discussions with DCSF prior to inclusion in Wave 7
- inclusion of Transforming Secondary Education as a major Council project

- initial work on TSE Project Plan
8. It will not be possible to identify the total capital investment required until consultation and technical work on individual schools have been completed and agreed with the DCSF. On the basis of detailed knowledge of conditions and fitness for purpose of Dudley schools it is very likely that several schools will be replaced with new buildings and others will receive major extensions and/or refurbishment. On the basis of other authorities' experiences, it is very likely that the capital investment from the DCSF will be in excess of £200 million.
  9. It is not possible to complete all of the projects simultaneously. The TSE strategy will require groups of schools to be completed in several phases. The inclusion of specific schools within each phase of Dudley's programme will be determined by the urgency of need and practical issues arising from project planning.
  10. Comments are invited on the areas set out in paragraph 11. It should be emphasised that there will be sufficient time to consider further developments to the strategy through the course of 2008. Changes to schools also require consultation arrangements as set out in legislation and guidance. This strategy does not replace the consultation or any other planning requirements that may apply to individual projects within the overall strategy. In short, the development of this strategy is intended to ensure coherence between the secondary educational needs of the Borough, the policy and control requirements of DCSF and major influences including the Black Country Challenge, transport strategy and so on. Additional consultation arrangements will be made for proposals affecting individual schools.
  11. **Areas for Comment**
    - a. **Vision for Transforming Secondary Education**

Dudley's vision for Transforming Secondary Education is currently being developed in conjunction with its schools and other learning providers, governors, dioceses, unions, local employers, community groups, parents and young people. A range of other partners with significant interests in improving outcomes for children, young people and their families are also directly involved. These include Dudley PCT, West Midlands Fire Service, Police, private and voluntary sectors. This is a working draft of our emerging vision that is being developed with partners and focuses on meeting the needs of learners and improving outcomes for all. Our aspiration is that secondary education in Dudley will be transformed by:

- schools becoming self-managing, self-evaluating, self-determining and empowered to develop innovations, sharing responsibility for all of Dudley's secondary pupils;
- meeting the needs of all learners, within and beyond the school day;

- providing high quality, flexible and environmentally friendly learning environments that will reflect the importance the Council places on education, care learning, and sustainability;
- being located close to centres of population thus reducing the need for pupils to be transported, and promoting 'walking to school';
- working in partnership with other learning providers, other secondary schools, and primary schools to serve their local communities;
- accommodating a refocused and enriched curriculum, with complementary specialisms sharing expertise and resources;
- promoting participation and providing opportunities to mix vocational and academic learning for learners of all ages providing parents and pupils with enhanced life chances and opportunities;
- promoting community cohesion, citizenship, a sense of self-worth and self-discipline, and being responsive to the skills needs of the local and regional economy; and
- becoming, where appropriate, centres for the provision of other services for young people and their families including social care, and primary health care.

The delivery of this vision will close current achievement gaps, increase staying on rates and raise the profile of education and learning in the community. Schools, other learning providers and the Council are committed to raising standards at a rate in excess of national trends and expectations and those of our statistical neighbours.

b. Deprivation and Regeneration

Based on the 2007 statistics, Dudley's current Free School Meals (FSM) percentage is 17.2% for primary schools and 15.6% for secondary schools as compared with 15.9% and 13.1% nationally. Other indicators however, indicate that the Borough is significantly more deprived than FSM alone indicates. The Index of Multi Deprivation ranks Dudley as the 109th most deprived LA in England out of 354, scoring particularly low on income and employment. Transforming Secondary Education will be the support for further regeneration of communities with schools providing flagship buildings where services and resources are delivered or facilitated from the school site. Extended schools will encourage people of all ages to develop skills to improve their employment opportunities, contribute to community cohesion and enhance the local economy. Developments in this infrastructure will improve labour market opportunities for all. Overall, Dudley will be a better place in which to live, learn, work and enjoy leisure time.

c. Diversity

Dudley has 22 mainstream secondary schools of which 14 are Community, 5 Foundation and 3 Voluntary Aided. There will be 21 mainstream secondary schools by 31 August 2008 due to the closure of Cradley High School. Of these 21 schools, three will have Sixth Forms. There are two secondary special schools and four other special schools where the age range includes Key Stage 3 and/or Key Stage 4 and three Pupil Referral Units, where the pupils are mainly of secondary age. We aim to maintain our rich diversity of mainstream school provision complemented by some secondary and all aged special schools. Amongst the major strengths of Dudley are the relationships established between the schools, the Council and other partners, based on regular programmed meetings.

TSE together with the strategies for extended schools, SEN and 14 – 19 will be used to encourage parents and pupils to have high aspirations and expectations of their schools including consistently excellent teaching and first rate buildings and facilities. In return they will be expected to work with their schools and commit to responsibilities about attendance, pupil behaviour, school work and positive contributions to their school community.

d. Curriculum

The Key Stage 3 and 14 – 19 curriculum will:

- be central to Dudley's vision for TSE and 11 to 19 education;
- identify, promote and meet the needs of learners;
- improve attainment and post – 16 retention
- ensure high quality teaching and learning and be reflective of the 14 – 19 and KS3 strategies;
- focus on curriculum design and content, course development and accreditation;
- provide an entitlement curriculum for all learners from a wide range of providers;
- create an interactive professional environment for teachers and support staff that facilitates collaborative working and promotes continuous professional development;
- engage wide stakeholder involvement to meet the needs of the local community and employers.

e. Workforce, Premises and ICT

TSE will be used to encourage secondary schools and other settings e.g. Children's Homes, to maximise new technologies and increase access to learning

on an anytime, anywhere principle. ICT will be used to encourage imaginative, innovative, vocational and academic learning and impact upon standards of attainment, delivered by diverse learning and teaching styles. Technology will be used to link with higher and further education institutions and employers and to facilitate distance learning. The ICT skills in schools will be used to extend knowledge and expertise in the Community and to improve the employment prospects of adults. TSE will allow Dudley to build on the successful Dudley Grid for Learning project by integrating learning, information management and buildings management e.g. security, energy efficiency. Building specifications will exploit the potential of high level technology.

TSE will provide the opportunity to ensure that all schools have accommodation that will allow new and innovative ways of teaching and learning styles to flourish. This will maximise the opportunity for workforce reforms to develop and will include appropriate facilities and rooms for support staff, teachers and external agencies like Connexions and health professionals, to work with young people either on a one to one basis or small group arrangement. Appropriate preparation and staff rooms will feature. The needs of each learner will be met through high quality teaching and learning with well trained, well qualified and confident staff offering high quality teaching and learning to all learners. Children and Young People's Services will support schools to recruit, retain and develop staff where appropriate.

TSE will provide buildings in which a modern and inclusive curriculum will be delivered with sufficient flexibility to accommodate future developments and innovations. Schools will have recreational space for pupils, wide circulation spaces, room in teaching areas for more than one adult to work, up to date ICT infrastructure and flexibility to allow community use of the buildings. Premises will support the management of good behaviour, inspire learning and be flexible to encourage learning at times which suit users. These premises will be low maintenance and the buildings' energy management and water recycling systems will be used as a learning resource. As a community resource the buildings of these extended schools will provide outreach facilities for other mainstream services such as Connexions, Youth Centres, Social Services and Health and could provide full and shared facilities such as sports provision and public libraries. Schools will be used to deliver services that impact directly on health standards for learners and the whole community.

f. Children's and Young Peoples' Voice

Children and young people spend a great deal of their early development in schools. They have a great deal of experience in the things that make schools effective. We must engage them. Dudley has established very effective mechanisms including the most modern technology for engaging the views of children and young people. These mechanisms will be used to seek the views of

children and young people about the emerging strategy and what should be included. There will be many more opportunities to engage children and young people on the detail of individual school proposals as the project phased begin.

g. Place Planning

The annual birth rate in Dudley declined from 4,111 in 1991 to 3,548 in 2006 which represented a drop of 13.7% over the last 15 years. This is already affecting secondary intakes in Dudley. Appendix 1 includes the number of pupils in each age group from 2006/07 and how the demand for secondary school places will fall to 2014/15. Dudley's vision is that 11 – 16 secondary schools will be of approximately between 900 and 1200 pupils. The birth rate is predicted to stabilize at the lower level of around 3,500 until 2021 (Office of National Statistics). The size of each school will be planned to ensure that there are sufficient places to meet local need and that schools are sustainable financially.

**Equality Impact**

12. The report takes into account the Council's Equality and Diversity Policy.

**Recommendation**

13. It is recommended that:

1. The Area Committee consider and endorse the emerging strategy for TSE;
2. Advise the Cabinet Member on any specific local issues that should be considered when developing the TSE Strategy for submission to the DCSF.



.....  
**John Freeman**  
**Director of Children's Services**

Contact Officer: Ray Watson  
Telephone: 01384 814395  
Email: [Raymond.watson@dudley.gov.uk](mailto:Raymond.watson@dudley.gov.uk)

## **List of Background Papers**

15 June 2005

Cabinet Report      Learning for the Future – Proposals for Governance Arrangements

13 December 2006

Cabinet Report      Investing in the Future – Transforming Secondary Education

13 June 2007

Cabinet Report      Investing in the Future - Transforming Secondary Education



**Planning Area 1 - Brierley Hill**

**PRIMARY PUPIL PROJECTIONS (January 2007 Based Projections)**

	CURRENT	PROJECTED								
	2006/07	2007/08	2008/09	2009/10	2010/11	2011/12	2011/12	2012/13	2013/14	2014/15
<i>Year R</i>	689	653	664	670	670	670	670	670	670	670
<i>Year 1</i>	667	660	627	637	643	643	672	672	672	672
<i>Year 2</i>	702	685	679	645	656	662	651	679	679	679
<i>Year 3</i>	677	693	678	671	638	649	666	655	684	684
<i>Year 4</i>	712	673	690	675	668	636	653	671	660	688
<i>Year 5</i>	749	712	674	691	676	670	641	659	676	665
<i>Year 6</i>	752	749	714	676	693	678	675	647	665	682
<b>TOTAL</b>	<b>4,948</b>	<b>4,825</b>	<b>4,725</b>	<b>4,666</b>	<b>4,644</b>	<b>4,607</b>	<b>4,629</b>	<b>4,653</b>	<b>4,706</b>	<b>4,741</b>
Current and Projected Surplus Places (based on existing Net capacity of 5,882)	934	1,057	1,157	1,216	1,238	1,275	1,253	1,229	1,176	1,141
<b>% Surplus Places</b>	<b>15.9%</b>	<b>18.0%</b>	<b>19.7%</b>	<b>20.7%</b>	<b>21.0%</b>	<b>21.7%</b>	<b>21.3%</b>	<b>20.9%</b>	<b>20.0%</b>	<b>19.4%</b>

**SECONDARY PUPIL PROJECTIONS (January 2007 Based Projections)**

	ACTUAL	PROJECTED								
	2006/07	2007/08	2008/09	2009/10	2010/11	2011/12	2011/12	2012/13	2013/14	2014/15
<i>Year 7</i>	764	743	745	710	673	689	675	672	644	662
<i>Year 8</i>	779	765	749	752	716	679	696	681	679	650
<i>Year 9</i>	788	785	776	760	762	727	689	706	691	689
<i>Year 10</i>	797	783	785	776	770	762	727	690	706	691
<i>Year 11</i>	792	788	779	781	773	767	759	724	687	704
<b>TOTAL</b>	<b>3,920</b>	<b>3,865</b>	<b>3,835</b>	<b>3,779</b>	<b>3,694</b>	<b>3,624</b>	<b>3,545</b>	<b>3,473</b>	<b>3,407</b>	<b>3,396</b>
Current & Projected Surplus Places (based on existing Net capacity of 4,060)	140	195	225	281	366	436	515	587	653	664
<b>% Surplus Places</b>	<b>3.4%</b>	<b>4.8%</b>	<b>5.5%</b>	<b>6.9%</b>	<b>9.0%</b>	<b>10.7%</b>	<b>12.7%</b>	<b>14.5%</b>	<b>16.1%</b>	<b>16.4%</b>

<b>Brierley Hill Grand Total</b>	<b>8,868</b>	<b>8,690</b>	<b>8,560</b>	<b>8,445</b>	<b>8,339</b>	<b>8,231</b>	<b>8,174</b>	<b>8,126</b>	<b>8,113</b>	<b>8,137</b>
----------------------------------	--------------	--------------	--------------	--------------	--------------	--------------	--------------	--------------	--------------	--------------

**Planning Area 2 - Dudley**

**PRIMARY PUPIL PROJECTIONS (January 2007 Based Projections)**

	CURRENT	PROJECTED								
	2006/07	2007/08	2008/09	2009/10	2010/11	2011/12	2011/12	2012/13	2013/14	2014/15
Year R	816	847	870	829	824	824	824	824	824	824
Year 1	845	831	861	885	839	834	834	834	834	834
Year 2	760	856	841	872	890	844	839	839	839	839
Year 3	825	769	864	850	875	894	848	843	843	843
Year 4	824	833	778	872	853	879	897	851	846	846
Year 5	850	824	834	779	867	848	873	890	846	841
Year 6	912	859	834	843	784	871	857	882	899	855
<b>TOTAL</b>	<b>5,832</b>	<b>5,819</b>	<b>5,882</b>	<b>5,930</b>	<b>5,932</b>	<b>5,993</b>	<b>5,972</b>	<b>5,964</b>	<b>5,933</b>	<b>5,883</b>
Current and Projected Surplus Places (based on existing Net capacity of 6,699)	867	880	817	769	767	706	727	735	766	816
<b>% Surplus Places</b>	<b>12.9%</b>	<b>13.1%</b>	<b>12.2%</b>	<b>11.5%</b>	<b>11.4%</b>	<b>10.5%</b>	<b>10.9%</b>	<b>11.0%</b>	<b>11.4%</b>	<b>12.2%</b>

**SECONDARY PUPIL PROJECTIONS (January 2007 Based Projections)**

	ACTUAL	PROJECTED								
	2006/07	2007/08	2008/09	2009/10	2010/11	2011/12	2011/12	2012/13	2013/14	2014/15
Year 7	660	682	643	625	627	584	648	638	656	669
Year 8	643	664	686	648	625	622	579	642	632	650
Year 9	648	645	666	688	646	617	614	571	634	624
Year 10	648	650	647	668	685	638	610	606	564	626
Year 11	607	637	639	636	652	663	617	590	587	546
Year 12	69	86	87	86	89	91	85	81	81	75
Year 13+	62	59	74	74	74	76	78	73	70	69
<b>TOTAL</b>	<b>3,337</b>	<b>3,424</b>	<b>3,442</b>	<b>3,424</b>	<b>3,398</b>	<b>3,291</b>	<b>3,230</b>	<b>3,202</b>	<b>3,224</b>	<b>3,260</b>
Current & Projected Surplus Places (based on existing Net capacity of 3,380)	43	-44	-62	-44	-18	89	150	178	156	120
<b>% Surplus Places</b>	<b>1.3%</b>	<b>-1.3%</b>	<b>-1.8%</b>	<b>-1.3%</b>	<b>-0.5%</b>	<b>2.6%</b>	<b>4.4%</b>	<b>5.3%</b>	<b>4.6%</b>	<b>3.5%</b>

<b>Dudley Grand Total</b>	<b>9,169</b>	<b>9,243</b>	<b>9,324</b>	<b>9,354</b>	<b>9,330</b>	<b>9,284</b>	<b>9,202</b>	<b>9,166</b>	<b>9,156</b>	<b>9,144</b>
---------------------------	--------------	--------------	--------------	--------------	--------------	--------------	--------------	--------------	--------------	--------------

**Planning Area 3 - Dudley North**

**PRIMARY PUPIL PROJECTIONS (January 2007 Based Projections)**

	CURRENT	PROJECTED								
	2006/07	2007/08	2008/09	2009/10	2010/11	2011/12	2011/12	2012/13	2013/14	2014/15
Year R	576	563	579	576	576	576	576	576	576	576
Year 1	577	584	571	590	586	586	586	586	586	586
Year 2	616	574	581	571	590	586	586	586	586	586
Year 3	651	626	584	594	584	603	598	598	598	598
Year 4	643	659	633	593	603	593	613	608	608	608
Year 5	670	642	657	635	595	605	595	615	610	610
Year 6	642	676	647	666	644	603	614	603	623	618
<b>TOTAL</b>	<b>4,375</b>	<b>4,324</b>	<b>4,253</b>	<b>4,225</b>	<b>4,178</b>	<b>4,153</b>	<b>4,168</b>	<b>4,172</b>	<b>4,187</b>	<b>4,182</b>
Current and Projected Surplus Places (based on existing Net capacity of 4,717)	342	393	464	492	539	564	549	545	530	535
<b>% Surplus Places</b>	<b>7.3%</b>	<b>8.3%</b>	<b>9.8%</b>	<b>10.4%</b>	<b>11.4%</b>	<b>12.0%</b>	<b>11.6%</b>	<b>11.6%</b>	<b>11.2%</b>	<b>11.3%</b>

**SECONDARY PUPIL PROJECTIONS (January 2007 Based Projections)**

	ACTUAL	PROJECTED								
	2006/07	2007/08	2008/09	2009/10	2010/11	2011/12	2011/12	2012/13	2013/14	2014/15
Year 7	841	805	848	814	837	809	759	772	759	783
Year 8	835	841	805	850	816	839	811	761	774	761
Year 9	847	826	832	799	843	810	833	805	755	768
Year 10	878	845	825	833	799	843	810	833	805	756
Year 11	837	870	837	819	827	794	837	804	827	800
Year 12	30	34	35	34	33	33	32	33	32	33
Year 13+	33	26	28	30	29	28	38	37	38	37
<b>TOTAL</b>	<b>4,301</b>	<b>4,247</b>	<b>4,210</b>	<b>4,177</b>	<b>4,184</b>	<b>4,156</b>	<b>4,120</b>	<b>4,045</b>	<b>3,991</b>	<b>3,937</b>
Current & Projected Surplus Places (based on existing Net capacity of 4,313)	12	66	103	136	129	157	193	268	322	376
<b>% Surplus Places</b>	<b>0.3%</b>	<b>1.5%</b>	<b>2.4%</b>	<b>3.2%</b>	<b>3.0%</b>	<b>3.6%</b>	<b>4.5%</b>	<b>6.2%</b>	<b>7.5%</b>	<b>8.7%</b>

<b>Dudley North Grand Total</b>	<b>8,676</b>	<b>8,570</b>	<b>8,463</b>	<b>8,402</b>	<b>8,362</b>	<b>8,309</b>	<b>8,287</b>	<b>8,217</b>	<b>8,178</b>	<b>8,120</b>
---------------------------------	--------------	--------------	--------------	--------------	--------------	--------------	--------------	--------------	--------------	--------------

**Planning Area 4 - Halesowen**

**PRIMARY PUPIL PROJECTIONS (January 2007 Based Projections)**

	CURRENT	PROJECTED								
	2006/07	2007/08	2008/09	2009/10	2010/11	2011/12	2011/12	2012/13	2013/14	2014/15
<i>Year R</i>	683	639	667	658	658	658	658	658	658	658
<i>Year 1</i>	687	682	638	665	656	656	656	656	656	656
<i>Year 2</i>	679	695	690	645	671	662	662	662	662	662
<i>Year 3</i>	718	689	705	699	654	680	671	671	671	671
<i>Year 4</i>	749	715	687	701	695	650	677	668	668	668
<i>Year 5</i>	741	757	722	693	708	701	656	683	674	674
<i>Year 6</i>	820	742	758	722	693	707	701	656	683	674
<b>TOTAL</b>	<b>5,077</b>	<b>4,919</b>	<b>4,866</b>	<b>4,782</b>	<b>4,734</b>	<b>4,715</b>	<b>4,681</b>	<b>4,654</b>	<b>4,672</b>	<b>4,663</b>
Current and Projected Surplus Places (based on existing Net capacity of 5,929)	<b>852</b>	<b>1,010</b>	<b>1,063</b>	<b>1,147</b>	<b>1,195</b>	<b>1,214</b>	<b>1,248</b>	<b>1,275</b>	<b>1,257</b>	<b>1,266</b>
<b>% Surplus Places</b>	<b>14.4%</b>	<b>17.0%</b>	<b>17.9%</b>	<b>19.3%</b>	<b>20.2%</b>	<b>20.5%</b>	<b>21.0%</b>	<b>21.5%</b>	<b>21.2%</b>	<b>21.4%</b>

**SECONDARY PUPIL PROJECTIONS (January 2007 Based Projections)**

	ACTUAL	PROJECTED								
	2006/07	2007/08	2008/09	2009/10	2010/11	2011/12	2011/12	2012/13	2013/14	2014/15
<i>Year 7</i>	749	843	763	778	742	711	727	720	674	701
<i>Year 8</i>	815	748	842	761	776	740	710	725	719	672
<i>Year 9</i>	811	812	746	838	757	772	737	707	721	715
<i>Year 10</i>	885	807	808	741	832	753	768	732	702	717
<i>Year 11</i>	897	872	795	795	729	819	741	756	721	691
<b>TOTAL</b>	<b>4,157</b>	<b>4,082</b>	<b>3,954</b>	<b>3,913</b>	<b>3,837</b>	<b>3,796</b>	<b>3,682</b>	<b>3,639</b>	<b>3,537</b>	<b>3,497</b>
Current & Projected Surplus Places (based on existing Net capacity of 4,440)	<b>283</b>	<b>358</b>	<b>486</b>	<b>527</b>	<b>603</b>	<b>644</b>	<b>758</b>	<b>801</b>	<b>903</b>	<b>943</b>
<b>% Surplus Places</b>	<b>6.4%</b>	<b>8.1%</b>	<b>11.0%</b>	<b>11.9%</b>	<b>13.6%</b>	<b>14.5%</b>	<b>17.1%</b>	<b>18.0%</b>	<b>20.3%</b>	<b>21.2%</b>

<b>Halesowen Grand Total</b>	<b>9,234</b>	<b>9,001</b>	<b>8,820</b>	<b>8,696</b>	<b>8,571</b>	<b>8,511</b>	<b>8,363</b>	<b>8,293</b>	<b>8,208</b>	<b>8,160</b>
------------------------------	--------------	--------------	--------------	--------------	--------------	--------------	--------------	--------------	--------------	--------------

**Planning Area 5 - Stourbridge**

**PRIMARY PUPIL PROJECTIONS (January 2007 Based Projections)**

	CURRENT	PROJECTED								
	2006/07	2007/08	2008/09	2009/10	2010/11	2011/12	2011/12	2012/13	2013/14	2014/15
Year R	665	686	649	694	694	694	694	694	694	694
Year 1	703	673	694	665	710	710	710	710	710	710
Year 2	734	701	671	701	671	717	717	717	717	717
Year 3	720	737	704	682	709	682	728	728	728	728
Year 4	749	725	742	717	695	721	694	741	741	741
Year 5	780	751	727	752	727	705	731	704	751	750
Year 6	761	776	747	731	756	729	706	733	706	752
<b>TOTAL</b>	<b>5,112</b>	<b>5,050</b>	<b>4,935</b>	<b>4,942</b>	<b>4,962</b>	<b>4,958</b>	<b>4,981</b>	<b>5,027</b>	<b>5,046</b>	<b>5,092</b>
Current and Projected Surplus Places (based on existing Net capacity of 5,563)	451	513	628	621	601	605	582	536	517	471
<b>% Surplus Places</b>	<b>8.1%</b>	<b>9.2%</b>	<b>11.3%</b>	<b>11.2%</b>	<b>10.8%</b>	<b>10.9%</b>	<b>10.5%</b>	<b>9.6%</b>	<b>9.3%</b>	<b>8.5%</b>

**SECONDARY PUPIL PROJECTIONS (January 2007 Based Projections)**

	ACTUAL	PROJECTED								
	2006/07	2007/08	2008/09	2009/10	2010/11	2011/12	2011/12	2012/13	2013/14	2014/15
Year 7	857	866	884	861	842	871	839	814	844	813
Year 8	888	852	861	889	866	848	876	844	819	849
Year 9	891	905	869	888	916	893	874	903	871	845
Year 10	961	884	898	872	891	919	896	877	906	874
Year 11	926	950	874	898	872	891	919	896	878	906
Year 12	138	112	115	106	111	105	108	111	108	106
Year 13+	132	130	106	108	102	104	100	102	105	102
<b>TOTAL</b>	<b>4,793</b>	<b>4,700</b>	<b>4,607</b>	<b>4,622</b>	<b>4,600</b>	<b>4,631</b>	<b>4,611</b>	<b>4,547</b>	<b>4,531</b>	<b>4,496</b>
Current & Projected Surplus Places (based on existing Net capacity of 5,112)	319	412	505	490	512	481	501	565	581	616
<b>% Surplus Places</b>	<b>6.2%</b>	<b>8.1%</b>	<b>9.9%</b>	<b>9.6%</b>	<b>10.0%</b>	<b>9.4%</b>	<b>9.8%</b>	<b>11.0%</b>	<b>11.4%</b>	<b>12.0%</b>

<b>Stourbridge Grand Total</b>	<b>9,905</b>	<b>9,750</b>	<b>9,541</b>	<b>9,564</b>	<b>9,562</b>	<b>9,589</b>	<b>9,592</b>	<b>9,574</b>	<b>9,577</b>	<b>9,589</b>
--------------------------------	--------------	--------------	--------------	--------------	--------------	--------------	--------------	--------------	--------------	--------------

**Dudley MBC****APPENDIX 1****PRIMARY PUPIL PROJECTIONS (January 2007 Based Projections)**

	CURRENT	PROJECTED								
	2006/07	2007/08	2008/09	2009/10	2010/11	2011/12	2011/12	2012/13	2013/14	2014/15
Year R	3,429	3,389	3,429	3,427	3,422	3,422	3,422	3,422	3,422	3,422
Year 1	3,479	3,429	3,392	3,441	3,435	3,430	3,458	3,458	3,458	3,458
Year 2	3,491	3,511	3,462	3,434	3,478	3,471	3,455	3,484	3,484	3,484
Year 3	3,591	3,515	3,535	3,496	3,460	3,507	3,511	3,495	3,524	3,524
Year 4	3,677	3,605	3,530	3,558	3,515	3,479	3,534	3,539	3,523	3,551
Year 5	3,790	3,686	3,615	3,550	3,573	3,529	3,497	3,551	3,557	3,541
Year 6	3,887	3,802	3,700	3,639	3,569	3,588	3,554	3,521	3,576	3,581
<b>TOTAL</b>	<b>25,344</b>	<b>24,936</b>	<b>24,661</b>	<b>24,545</b>	<b>24,451</b>	<b>24,426</b>	<b>24,430</b>	<b>24,470</b>	<b>24,543</b>	<b>24,561</b>
Current and Projected Surplus Places (based on existing Net Capacity of 28,790)	3,446	3,854	4,129	4,245	4,339	4,364	4,360	4,320	4,247	4,229
% Surplus Places	12.0%	13.4%	14.3%	14.7%	15.1%	15.2%	15.1%	15.0%	14.8%	14.7%

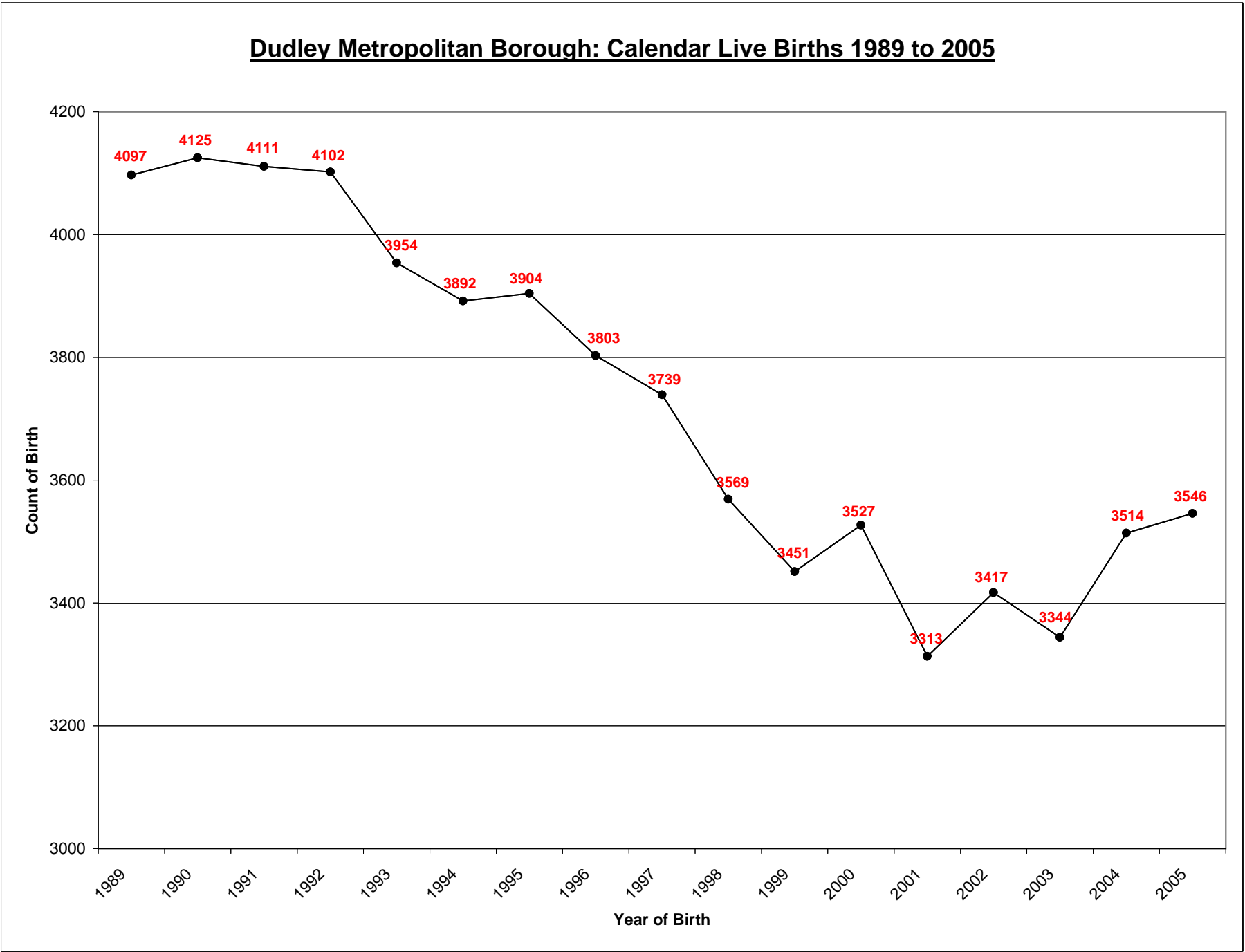
**SECONDARY PUPIL PROJECTIONS (January 2007 Based Projections)**

	ACTUAL	PROJECTED								
	2006/07	2007/08	2008/09	2009/10	2010/11	2011/12	2011/12	2012/13	2013/14	2014/15
Year 7	3,871	3,940	3,883	3,787	3,722	3,665	3,647	3,616	3,577	3,629
Year 8	3,960	3,871	3,944	3,899	3,800	3,728	3,672	3,654	3,623	3,583
Year 9	3,985	3,973	3,889	3,973	3,924	3,819	3,747	3,692	3,673	3,641
Year 10	4,169	3,969	3,962	3,889	3,978	3,914	3,810	3,739	3,684	3,664
Year 11	4,059	4,118	3,925	3,929	3,853	3,934	3,873	3,770	3,700	3,647
Year 12	237	232	236	225	232	230	224	226	221	214
Year 13+	227	215	208	212	204	208	216	211	213	208
<b>TOTAL</b>	<b>20,508</b>	<b>20,318</b>	<b>20,048</b>	<b>19,915</b>	<b>19,714</b>	<b>19,499</b>	<b>19,188</b>	<b>18,906</b>	<b>18,690</b>	<b>18,587</b>

Current & Projected Surplus Places (based on existing Net capacity of 21,305)	797	987	1,257	1,390	1,591	1,806	2,117	2,399	2,615	2,718
% Surplus Places	3.7%	4.6%	5.9%	6.5%	7.5%	8.5%	9.9%	11.3%	12.3%	12.8%

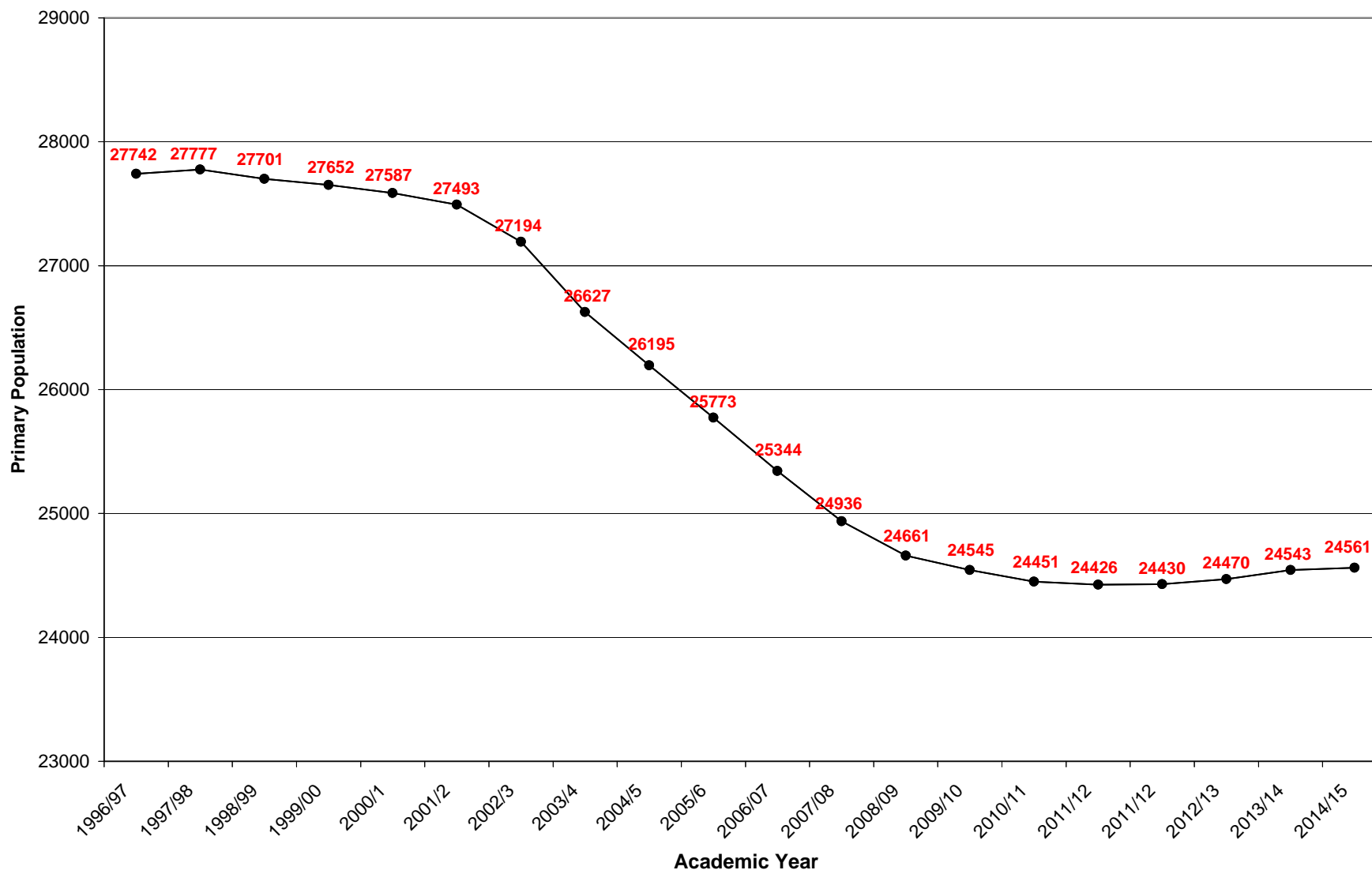
<b>Dudley LEA Grand Total</b>	<b>45,852</b>	<b>45,254</b>	<b>44,709</b>	<b>44,460</b>	<b>44,164</b>	<b>43,924</b>	<b>43,619</b>	<b>43,376</b>	<b>43,233</b>	<b>43,148</b>
-------------------------------	---------------	---------------	---------------	---------------	---------------	---------------	---------------	---------------	---------------	---------------

Year	Number of Live Births
1989	4097
1990	4125
1991	4111
1992	4102
1993	3954
1994	3892
1995	3904
1996	3803
1997	3739
1998	3569
1999	3451
2000	3527
2001	3313
2002	3417
2003	3344
2004	3514
2005	3546
2006	Data not available until May 07



Academic Year	Primary Population
1996/97	27742
1997/98	27777
1998/99	27701
1999/00	27652
2000/1	27587
2001/2	27493
2002/3	27194
2003/4	26627
2004/5	26195
2005/6	25773
2006/07	25344
2007/08	24936
2008/09	24661
2009/10	24545
2010/11	24451
2011/12	24426
2011/12	24430
2012/13	24470
2013/14	24543
2014/15	24561

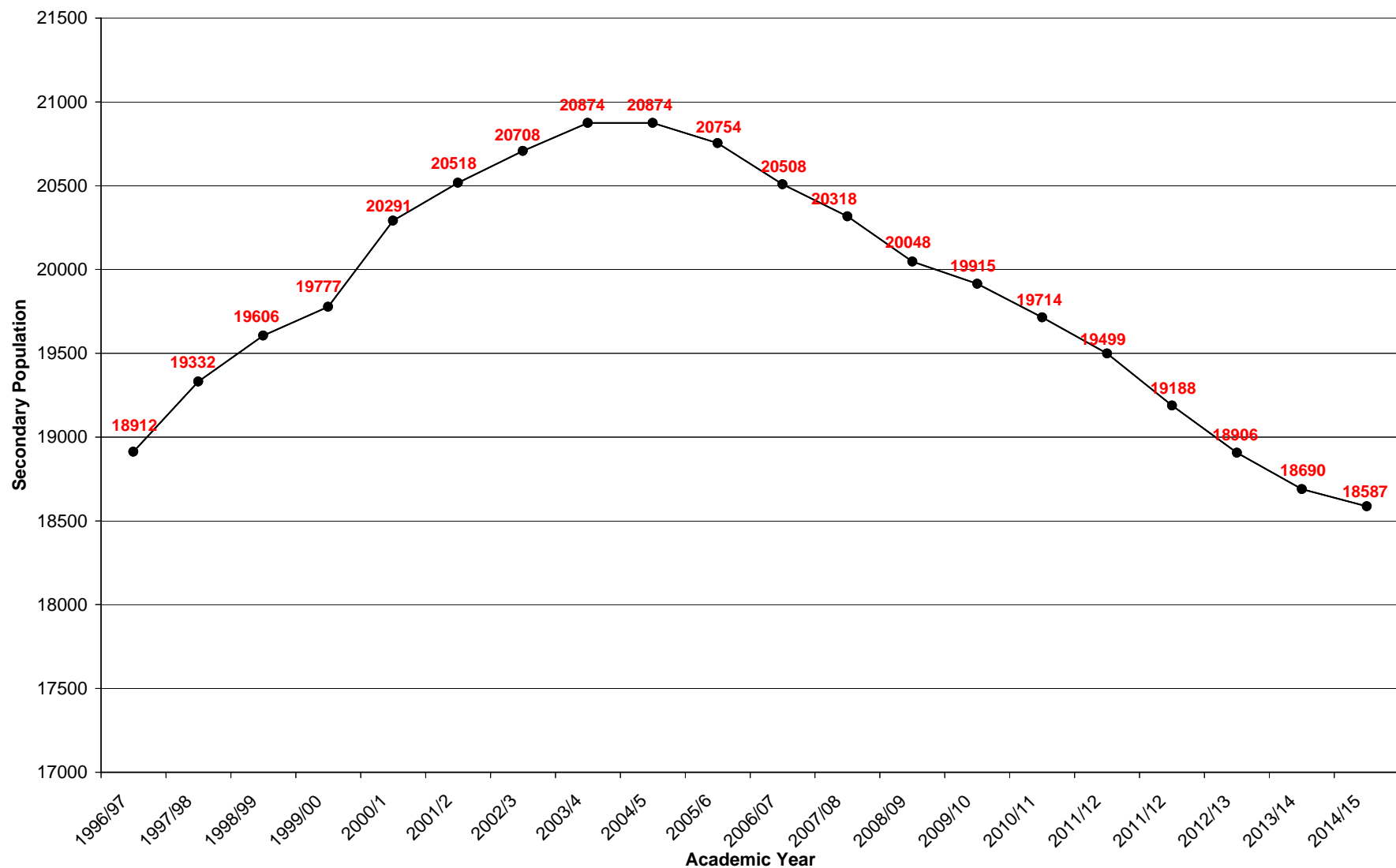
**Dudley Primary School Population : Reception - Year 6 (1996/7 to Projected 2014/15)**



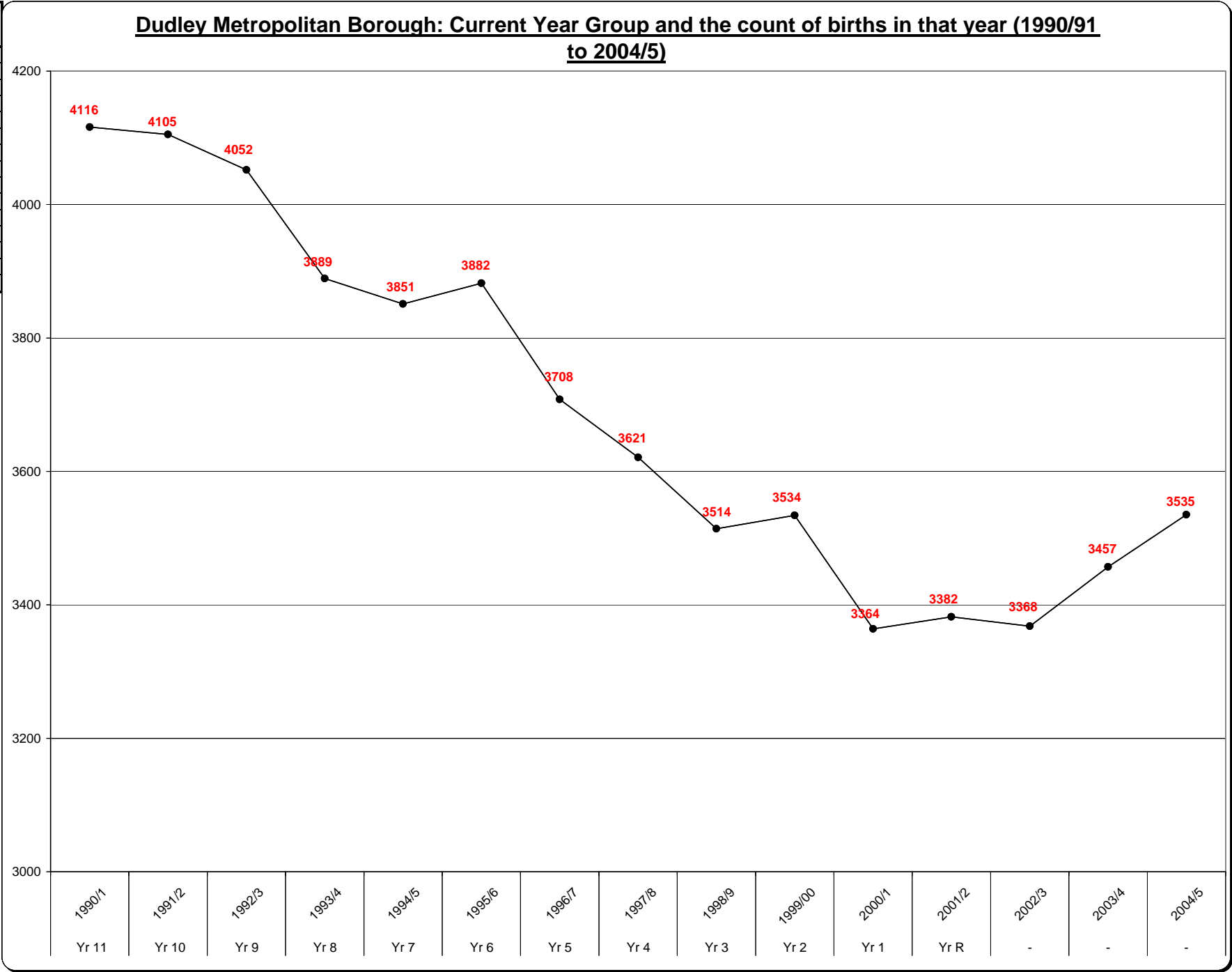


Academic Year	Secondary Population
1996/97	18912
1997/98	19332
1998/99	19606
1999/00	19777
2000/1	20291
2001/2	20518
2002/3	20708
2003/4	20874
2004/5	20874
2005/6	20754
2006/07	20508
2007/08	20318
2008/09	20048
2009/10	19915
2010/11	19714
2011/12	19499
2011/12	19188
2012/13	18906
2013/14	18690
2014/15	18587

**Dudley Secondary School Population : Year 7 to 6th Form (1996/7 to Projected 2014/15)**



Current Year Group	Birth Year	Live Births in that year
Yr 11	1990/1	4116
Yr 10	1991/2	4105
Yr 9	1992/3	4052
Yr 8	1993/4	3889
Yr 7	1994/5	3851
Yr 6	1995/6	3882
Yr 5	1996/7	3708
Yr 4	1997/8	3621
Yr 3	1998/9	3514
Yr 2	1999/00	3534
Yr 1	2000/1	3364
Yr R	2001/2	3382
-	2002/3	3368
-	2003/4	3457
-	2004/5	3535



**Central Dudley Area Committee – 11<sup>th</sup> September, 2007**

**Report of the Chief Executive**

**BIG Lottery Bid – A Million People: Black Country as an Urban Park**

**Purpose of Report**

1. To make the Area Committee aware of the Black Country Big Lottery bid for £50 million. A presentation on the project will be given at the meeting.

The total value of the project, called A Million People: Black Country as an Urban Park, is £110 million. Dudley's element (£48 million) includes enhancing the geological heritage on Wren's Nest National Nature Reserve. Proposals would include new visitor facilities and opening up the underground canals and mines which link the site to Castle Hill.

**Background**

2. Black Country Consortium is acting as lead applicant for a joint bid to BIG Lottery for £50 million on behalf of the 4 Black Country Authorities and Black Country Wildlife Trust.
3. The Black Country bid is one of only six projects nationally to have been short-listed for a single grant of up to £50 million from the Big Lottery Fund Living Landmarks People's Millions programme. It is the only bid from the West Midlands.
4. Final proposals were submitted to Big Lottery on 31<sup>st</sup> May 2007.
5. The projects are presently being assessed and the Big Lottery committee will meet on 15<sup>th</sup> October to decide which projects go through to the Television vote on ITV during the week 3 to 7 December.
6. The £50 million grant will be decided by TV vote. It is therefore important that the general public is mobilised to vote for the Black Country's bid.

**Finance**

7. The financial implications of the Council's participation in the Big Lottery project were included in the Capital Programme Monitoring report approved by the Council on 16 July, 2006. The Council has approved urgent amendments to the Capital Programme associated with the project.

## **Law**

8. The Council may do anything which achieves the promotion or improvement of the economic, social and environmental well-being of its area under Section 2 of the Local Government Act 2000.

The Council may provide recreational facilities for its area under section 19 of the Local Government (Miscellaneous Provisions) Act 1976

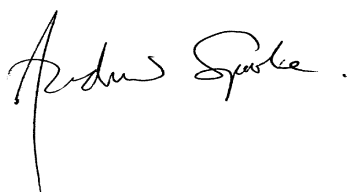
## **Equality Impact**

9. The proposals comply with the Council's policies on equality and diversity and this has been reflected in consultation work undertaken with particular consideration for the views of children and young people.

## **Recommendation**

10. It is recommended that the Committee:-

- Receives a presentation on the bid proposals.
- Supports the bid to the Big Lottery Fund.
- Urges members of the public to support the Black Country's bid, subject to the project being successful in going through to the TV vote later in the year.



.....  
**Andrew Sparke**  
**Chief Executive**

Contact Officer: Carol Trehearn  
Telephone: 01384 815 227  
Email: [carol.trehearn@dudley.gov.uk](mailto:carol.trehearn@dudley.gov.uk)

## **List of Background Papers**

Report to the Council Meeting on 16<sup>th</sup> July, 2007 – Capital Programme Monitoring.

**Central Dudley Area Committee – 11<sup>th</sup> September, 2007**

**Report of the Director of Law and Property**

**Applications in respect of land and property owned by the Council**

**Purpose of Report**

1. To bring to the Committee's attention requests relating to land and property controlled by the Council and to seek the Committee's recommendations on those requests.

**Background**

2. The Council has interests in a substantial amount of land and property across the Borough, those interests being controlled by the Council's various Directorates.
3. Requests are received from the public on a regular basis for property related matters such as purchases, leases, licences, easements and access agreements. Those requests are dealt with by the Directorate Law and Property who carry out a consultation process with the Council's relevant Directorates before preparing a report for Committee to consider.
4. Reports for this Committee are attached as appendices and the proposal resulting from the consultation on each particular request is set out at the end of each appendix. A plan is provided where required.

**Finance**

5. In general terms leases, easement and access agreements each generate an income for the Council. The sale of the land generates a capital receipt of the Council, the size of which would depend on a valuation placed on the site by the Director of Law and Property and the price finally agreed between the parties.

**Law**

6. Section 123 of the Local Government Act, 1972 enables the Council to dispose of its interests in land at the best price reasonably obtainable.

Section 123(2A) of the Local Government Act, 1972 requires the Council prior to any disposal of open space to advertise notice of its intention to do so for two consecutive weeks in a newspaper circulating in the area in which the land is situate and to consider any objections which may be made.

The various statutory undertakers will have statutory powers to install equipment in Council owned land, but they do apply to the Council for a formal agreement, such as an easement, on a regular basis.

Section 32 and 34 of the Housing Act, 1985 and the General Consents for the disposal of Houses and Land, 1999, enable the Council to let and dispose of land and buildings held for housing purposes at the best price reasonably obtainable.

Section 33 of the Local Government (Miscellaneous Provisions) Act 1982 enables the Council to apply provision to any land it sells restricting its future use, provided the relevant section of the Act are specifically referred to in the transfer document and are registered as a local land charge.

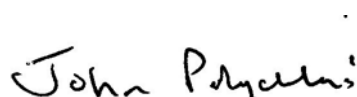
Section 111 of the Local Government Act, 1972 empowers the Council to do anything calculated to facilitate or which is conducive to or incidental to the discharge of any of its functions.

### **Equality Impact**

7. The proposals take into account the Council's equal opportunities policies.

### **Recommendation**

8. It is recommended that proposals contained in each of the attached appendices be approved.



.....  
**John Polychronakis**  
**Director of Law and Property**

Contact Officers: Gill Hudson, Property Manager  
Telephone: 01384 815311  
Email: [gill.hudson@dudley.gov.uk](mailto:gill.hudson@dudley.gov.uk)

Sonia McLean, Property Manager  
Telephone 01384 815321  
Email: [sonia.mclean@dudley.gov.uk](mailto:sonia.mclean@dudley.gov.uk)

Alan Nugent, Property Manager  
Telephone 01384 815351  
Email: [alan.nugent@dudley.gov.uk](mailto:alan.nugent@dudley.gov.uk)

### **List of Background Papers**

See individual appendices

**Central Dudley Area Committee**

**Date: 11<sup>th</sup> September 2007**

**Request for: Permanent access rights**

**Location: Land at Walker Street, Netherton**  
**(As shown on the plan attached)**

**Background**

An application has been received from the builder of two properties on private land at Walker Street, Netherton, requesting permanent pedestrian access rights across Council owned land as marked on the attached plan.

The two new properties 16 & 16A Walker Street currently have the benefit of rear access to both properties along the side and rear of 16 Walker Street.

The applicant wishes the Council to grant pedestrian access across the tenancy of 18 Walker Street, which is a Council house controlled by the Directorate of Adult, Community and Housing Services, so that 16A Walker Street, Netherton, can have rear pedestrian access directly to its garden and will not have to cross 16 Walker Street.

The land in question is part of the tenancy of 18 Walker Street and also provides a right of way that serves 20 Walker Street which is a former Council property which has been sold under the right to buy.

**Comments**

The relevant Council Directorates have been consulted and the Directorate of Adult, Community and Housing Services would not support the application to grant access rights across the land, as this would disrupt the quiet enjoyment of its tenant at 18 and would involve alterations to the access way and garden of 18 Walker Street. They therefore do not wish to disrupt the current arrangements and wish the application refused.

**Proposal**

That the Area Committee advise the Cabinet Member for Housing to refuse the application.

**Background papers**

1. Letter(s) from the applicant.
2. E-mails and memos from the Council Directorates.

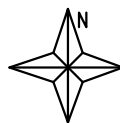
Contact Officer:  
Gill Hudson, Property Manager, Ext. 5311



Reproduced from the O.S. mapping with the permission of The Controller of H.M.S.O.  
© Crown Copyright 2007 Licence No. 100019566

TITLE:

APPLICATION FOR ACCESS RIGHTS ACROSS LAND ADJ  
TO: 18 WALKER STREET  
NETHERTON



SCALE:

1 : 500

DATE:

04-MAY-2007

Corporate Estate Services  
Directorate of Law and Property  
3 St James's Road  
DUDLEY  
West Midlands  
DY1 1HZ

OS data reproduced with the permission of the Controller of HMSO 2007 Licence No 100019566

CREATED BY:





**Central Dudley Area Committee – 11th September 2007**

**Report of the Director of The Urban Environment**

**Dudley Southern Bypass and Cinder Bank Traffic Island, Netherton  
Traffic and Transportation Issues**

**Purpose of Report**

1. To inform Area Committee of investigations which are proposed for Cinder Bank Traffic Island.

**Background**

2. At your 12th June 2007 meeting, concern was expressed regarding the current operation of the Cinder Bank Traffic Island.
3. A site meeting subsequently took place between Ward Members and Officers on Tuesday 3rd July 2007.
4. Following the site meeting with members, consideration was given to obtaining specialist design services from consultants, to:-
  - Identify the nature and extent of traffic related issues.
  - Consider preliminary options for remediation of identified issues.

**Finance**

5. The proposed consultant's fee for undertaking the work outlined in paragraph 11 of this report would be approximately £10,000. This sum could be met from the existing Integrated Transport Block of the Local Transport Plan.

**Law**

6. It is the duty of the Council as Highway Authority, to maintain highways maintainable at the public expense under Section 41 of the Highways Act 1980.
7. The Council is under a duty to improve highways under Section 62 of the Highways Act 1980.

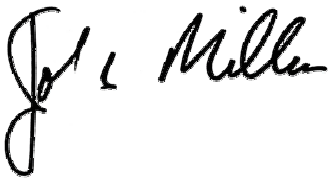
8. The Council has the power to provide new highways under Section 24 of the Highways Act 1980.
9. Section 111 of the Local Government Act 1972 empowers the council to do anything calculated to facilitate or is conducive or incidental to the discharge of any of its functions.

### **Equality Impact**

10. The recommendation contained within this report complies with the Council's equality and diversity policy.
11. Schemes to improve traffic movements can incorporate measures to assist children and other vulnerable users of the public highway.

### **Recommendation**

12. That the Area Committee recommends to the Cabinet Member for Transportation the engagement of consultants as set out in the report.



.....  
**John Millar**  
**Director of The Urban Environment**

Contact Officer: Peter Van Geersdaele  
Telephone: 01384 815437  
Email: [peter.vangeersdaele@dudley.gov.uk](mailto:peter.vangeersdaele@dudley.gov.uk)

Contact Officer: Neil Lissimore  
Telephone: 01384 814686  
Email: [neil.lissimore@dudley.gov.uk](mailto:neil.lissimore@dudley.gov.uk)

### **List of Background Papers**

Minutes of Central Dudley Area Committee, 12th June 2007

**Central Dudley Area Committee – 11<sup>th</sup> September 2007**

**Report Of The Director Of The Urban Environment**

**Urban Environment - Matters Raised At The  
Central Dudley Area Committee - 12<sup>th</sup> June 2007**

**Purpose Of Report**

1. To update Committee on a number of issues raised at the 12<sup>th</sup> June 2007 Central Dudley Area Committee that relate to services provided by the Directorate of the Urban Environment.

**Background**

2. The Directorate of the Urban Environment provides a number of services that have considerable impact on local communities. This diverse range of technical services focus on regenerating the Borough, maintaining our environment to high standards, protecting our communities and promoting leisure and other community services for all.
3. Requests for service and information are received at Area Committee on a regular basis from both members and the general public, relating to matters such as traffic management, leisure and recreation, regeneration and new development. Few enquiries can be answered immediately, with many prompting further investigation, feasibility studies and public consultation, prior to being reported back to Committee.
4. To keep Committee updated, progress reports are included as an appendix and the proposal resulting from the update is set out at the end of each paragraph.

**Finance**

5. There are no immediate financial implications arising from this report.

**Law**

6. Section 19 of the Local Government (Miscellaneous Provisions) Act 1976 empowers the Council to provide recreational facilities in its area.
7. The Council is empowered to improve highways under Section 62 of the Highways Act 1980.
8. Section 2 of the Local Government Act 2000, enables the Council to do anything that is likely to promote the economic, social and environmental well-being of the Borough.

9. Traffic signs are provided under powers contained in Section 64 of the Road Traffic Regulation Act 1984, subject to regulations made by the Secretary of State for Transport.
10. Guardrails may be provided under Section 66 of the Highways Act 1990.
11. Pedestrian crossing facilities are provided under powers contained in Section 23 of the Road Traffic Regulation Act 1984, subject to Regulations made by the Secretary of State.
12. Traffic Regulation Orders are made under Section 1 of the Road Traffic Regulation Act 1984.
13. The Traffic Calming Act 1992 amends the Highways Act 1980 to allow works to be carried out to promote safety and to preserve or improve the environment.
14. Section 51 of the Environmental Protection Act 1990 places a duty on the Council as Waste Disposal Authority for its area to provide places where its residents may deposit their household waste free of charge.
15. Part IX of the Highways Act 1980 contains provisions relating to the planting, care and control of trees in or on land adjoining the highways.
16. In the care and maintenance of its trees, the Council will owe the normal duty of care under the common law principles of nuisance and negligence.
17. Section 111 of the Local Government Act 1972 authorises the Council to do anything which is calculated to facilitate or is conducive or incidental to the exercise of any of its functions.

### **Equality Impact**

18. The proposals take into account the Council's equal opportunities policies. The Directorate of the Urban Environment provides a diverse range of services that affect all sections of the community.

### **Recommendation**

19. That the proposals contained in Appendix 1 attached be approved.



.....  
**pp John B Millar**  
**Director of the Urban Environment**

Contact Officer: Matt Williams  
Telephone: 01384 814510  
Email: [Matt.Williams@Dudley.gov.uk](mailto:Matt.Williams@Dudley.gov.uk)

**Background documents used in the preparation of this report:-**

1. Action Notes from 12<sup>th</sup> June 2007 Committee

## Appendix 1

### **DIRECTORATE OF THE URBAN ENVIRONMENT - MATTERS RAISED AT THE CENTRAL DUDLEY AREA COMMITTEE HELD 12<sup>TH</sup> JUNE 2007**

#### **1. PETITION - SLEDMERE ESTATE**

**Background:** At the Central Dudley Area Committee on the 12th June 2007, residents of Sledmere Estate submitted a petition requesting that the Council take action regarding illegal parking in the area surrounding the Warrens Hall Road entrance to Sledmere Primary School. Parents were concerned about children's safety when vehicles are parked in the area.

**Comments:** A DUE officer met with the main petitioner on site on the 26<sup>th</sup> June to discuss the issues and it was agreed that the Council would consider a possible future safety scheme to address the problem. A letter dated 26<sup>th</sup> July 2007 was sent to the main petitioner.

**Proposal:** That the Area Committee note the information contained in this paragraph.

#### **2. PETITION - LODGE FARM ESTATE**

**Background:** At the Central Dudley Area Committee on the 12th June 2007, residents of Lodge Farm Estate submitted a petition requesting that consideration be given to converting the traffic island outside No. 55 - 69 Lodge Crescent into parking bays to ease parking problems on the estate.

**Comments:** DUE officers have confirmed that no public highway funds are available, or likely to become available, for the conversion of roundabouts into parking areas. Additionally, it would not be safe to encourage unrestricted traffic movements on sections of the public highway where turning movements constantly take place.

**Proposal:** That the Area Committee note the information contained in this paragraph.

#### **3. PETITION - ABINGDON ROAD/LOMBARD AVENUE/EVESHAM RISE/HIGH STREET, QUARRY BANK**

**Background:** At the Central Dudley Area Committee on the 12th June 2007, residents of Abingdon Road, Lombard Avenue, Evesham Rise and High Street, Quarry Bank submitted a petition requesting traffic calming measures in those streets to prevent accidents occurring.

**Comments:** This same petition had already been submitted previously to DUE officers several weeks prior to the 12<sup>th</sup> June Committee and a response was sent to the main petitioner dated 10<sup>th</sup> May 2007 to the effect that the Council currently introduces traffic calming measures, only as part of a Local Safety Scheme where the emphasis is very much related to a reduction in the recorded number of personal accidents. The accident records for the roads concerned have been reviewed and as there have been

no personal injury accidents along any of these roads during the course of the last 3 years review period, a Local Safety Scheme cannot be justified. However, these roads will be added to the list of sites to be assessed later this year for possible inclusion in a future programme of works in order that consideration can be given to any changes in the current circumstances.

Speeding issues are strictly an enforcement matter for the Police Authority and whilst speed cameras can provide complimentary support to the initiatives of the Police, their use and deployment would still be subject to an assessment process to establish an order of relative priority for all the sites being considered across the West Midlands as a whole and not just within this Council's own area. There are currently no proposals to introduce speed cameras along either Cradley Road or Saltwells Road.

Further to the letter of the 10<sup>th</sup> May, a meeting took place on the 18<sup>th</sup> June 2007 with an officer from DUE, the main petitioner and a Police representative to discuss the various issues in more detail. At that time the main petitioner stated that there seemed very little else to be added to comments already made, but would still consider raising concerns at appropriate intervals in the future.

**Proposal:** That the Area Committee note the information contained in this paragraph.

#### **4. GREEN WASTE COLLECTION - CASTLE AND PRIORY AREA**

**Background:** At the Central Dudley Area Committee on the 12th June 2007, a member of the public raised concern in relation to the green waste collection in the Castle and Priory area, commenting that due to the delay in the distribution of green bins and the fact the Council had not carried out collections in the interim period, large volumes of green waste had accumulated.

**Comments:** A further green collection has been made to remove the backlog.

**Proposal:** That the Area Committee note the information contained in this paragraph.

#### **5. BURTON ROAD/BROADWAY STEPS**

**Background:** At the Central Dudley Area Committee on the 12th June 2007, Cllr Mrs Aston asked for the steps from Burton Road down to The Broadway to be cleared as they are overgrown and litter has accumulated.

**Comments:** The overgrowth has been cut back and litter cleansed.

**Proposal:** That the Area Committee note the information contained in this paragraph.

## **6. DAMAGED FOOTPATHS - CASTLE AND PRIORY AREA**

**Background:** At the Central Dudley Area Committee on the 12th June 2007, Cllr Finch raised concern about the damage to the footpaths caused by trees which line the roads in the Castle and Priory area. He asked for the damage to be repaired by pruning and/or resurfacing.

Cllr Finch also requested a copy of the Council policy, should one exist, relating to tree root damage of public footpaths.

**Comments:** Removing the tree roots to make the surfaces safe, would render the trees unstable, therefore Officers from Street Care and Green Care are currently assessing this situation. Investigations into new techniques are to take place which, in the future, may enable excavation and removal of some of the surface roots and replacing them with special materials to retain the integrity of the roots and allow the surface to be porous thereby maintaining the "feeding system" to the roots and enabling the footway to be less of an obstacle course and suitable for resurfacing. Trials of this technique are to take place in The Northway Sedgley. Regrettably the inclines that the roots have created cannot merely be resurfaced because this would cause an "exaggerated risk".

Although there is no specific policy relating to root damage to footpaths, details regarding trees on public footpaths can be found in Dudley's Tree Strategy on the Dudley MBC website within the Environment & Planning web pages.

**Proposal:** That the Area Committee note the information contained in this paragraph.

## **7. KING STREET 'OPENING'**

**Background:** At the Central Dudley Area Committee on the 12th June 2007, Cllr Ali commented that he had, on several occasions, seen drivers pull out of the opening in the road near to the King Street footbridge and requested that officers investigate the possibility of modifying this area of road in order to prevent a serious accident.

**Comments:** A comprehensive letter was sent to Cllr Ali dated the 11<sup>th</sup> June regarding the gap in the central reserve in King Street, Dudley to the effect that this issue extends back to 1999 and involves opposition by members of the business community to closing the central carriageway gap. After careful consideration by officers from a number of highway engineering specialities, it is the view of officers that the present arrangements for this part of Dudley are the best for all sectors of the business community, under current circumstances. Accordingly, it will not be possible to consider closing the highway gap in King Street for the foreseeable future.

**Proposal:** That the Area Committee note the information contained in this paragraph.



**8. BUNNS LANE TRAFFIC SAFETY**

**Background:** At the Central Dudley Area Committee on the 12th June 2007, Cllr Ali requested a meeting between traffic officers and relevant Ward Members to discuss the recent traffic accident in Bunns Lane and consider the possibilities for improving traffic safety in the area.

**Comments:** Correspondence has taken place between Members and DUE Officers regarding Bunns Lane and consideration is being given to future actions. A meeting will be arranged involving Members and DUE Officers following receipt and analysis of the results of the Coroner's inquiry into the recent fatal injury accident.

**Proposal:** That the Area Committee note the information contained in this paragraph.

**9. NEW ROWLEY ROAD CENTRAL REFUGE**

**Background:** At the Central Dudley Area Committee on the 12th June 2007, Cllr Ali requested that a central refuge area be created to assist pedestrians in using the crossing near to the bus stop on New Rowley Road.

**Comments:** Consideration will be given during the next financial year to including the section of New Rowley Road, Dudley, near to the bus stops between Oakham Road and Oakham Avenue, in a future year's annual Pedestrian Crossing Programme.

**Proposal:** That the Area Committee note the information contained in this paragraph.

**10. POTHOLE - WATSONS GREEN ROAD**

**Background:** At the Central Dudley Area Committee on the 12th June 2007, Cllr Waltho requested the repair of a pothole in Watsons Green Road.

**Comments:** A number of potholes in Watsons Green road were repaired on the 22<sup>nd</sup> June 2007.

**Proposal:** That the Area Committee note the information contained in this paragraph.

**11. ST THOMAS' WARD - GENERAL RUBBISH**

**Background:** At the Central Dudley Area Committee on the 12th June 2007, Cllr Waltho raised concern about general rubbish in the St Thomas' Ward. He said that efforts have been made to clean up the area in the past, but the problem always returns. Cllr Waltho requested a meeting with relevant officers to discuss the formulation of a strategy to clean up the rubbish and minimise future problems.

**Comments:** Fortnightly sweeps on all St Thomas' Ward estates have been set up week commencing 30<sup>th</sup> July 2007. In addition, officers from DUE and DACHS will work together on enforcement and community focused initiatives.

**Proposal:** That the Area Committee note the information contained in this paragraph.

**12. BUFFERY PARK FAIR**

**Background:** At the Central Dudley Area Committee on the 12th June 2007, Cllr J Davies requested that the park be cleaned up as soon as possible after the current fair there had finished.

**Comments:** The park has been cleaned up.

**Proposal:** That the Area Committee note the information contained in this paragraph.

**13. BUFFERY PARK PLAYGROUND**

**Background:** At the Central Dudley Area Committee on the 12th June 2007, Cllr J Davies raised concern regarding the playground in Buffery Park, where it was reported that people are taking dogs onto the play area and also there are large amounts of broken glass. He requested that officers investigate these reports and take appropriate action.

**Comments:** "No Dogs Allowed" signs have been erected on the play area perimeter fence and the area has been cleaned.

**Proposal:** That the Area Committee note the information contained in this paragraph.

**14. CINDER BANK ISLAND & CINDER BANK/NORTHFIELD ROAD, NETHERTON**

A member of the public raised a number of issues regarding traffic flow along Cinder Bank, including a request for the results of any traffic counts which had been carried out in the area, clarification as to why a previous proposed scheme to install a traffic island there had been abandoned and a timetable for improved public transport including the 'Bus Showcase' route through Netherton and the extension of the Midland Metro. Written response to be sent to the questioner, copy to Cllr Rahman.

Cllr Rahman raised concern that a solution had not yet been found in relation to the issue of traffic safety at the junction of Northfield Road and Halesowen Road. He requested that consideration be given to remodelling the junction as a priority to prevent an accident.

Cllr Rahman requested a site visit with traffic officers to view traffic problems at Cinder Bank Island. He was concerned that the area is often gridlocked at peak times with the congestion resulting in serious air pollution in the area.

**Comments:** Following investigations, a letter was sent on 31<sup>st</sup> July to the member of the public requesting the traffic flow information and bus and Midland Metro provision referring him to Dudley MBC's website and the West Midlands Local Transport Plan website for transportation information. Reference was made to Centro's website where Bus Showcase information can be found. There are no Bus Showcase proposals for Cinder Bank for the foreseeable future.

DUE Officers have met with Cllr Rahman on site to discuss issues involving Halesowen Road's junction with Northfield Road. It is necessary to consider the design and construction of a major junction improvement scheme. The scope of such a scheme is likely to require funding far in excess of current budgets.

DUE Traffic Officers have met Councillor Ali, Councillor Rahman and Mr Ian Pearson MP on site on various occasions to discuss the issues relating to traffic movements and air quality in the above sections of Netherton. A report has been prepared for presentation to tonight's meeting.

**Proposal:** That the Area Committee note the information contained in this paragraph.

#### 15. **WOODSIDE/HOLLY HALL - LITTER**

**Background:** At the Central Dudley Area Committee on the 12th June 2007, Cllr Rahman commented that although progress had been made in improving the litter situation in Woodside and Holly Hall, more effort is required to clean up these areas and asked for enforcement to be carried out.

**Comments:** DACHS have worked closely with the DUE Street Cleansing section on a number of community litter picks in the area, with support of local community representatives and key stakeholders. They are aware of the criteria and guidance that the Council give to persons and groups who participate in a community litter pick. In particular, the need to be fully aware of Health and Safety issues and Insurance etc.

Cllr Rahman's request has been discussed with DACHS who are also trying to obtain funding from Central Government through 'Respect', who are keen to provide support to clean up problematic areas. DACHS contact details have been forwarded to Cllr Rahman accordingly.

**Proposal:** That the Area Committee note the information contained in this paragraph.

#### 16. **SPRING PARKLANDS - NEW NAME PLATES**

**Background:** At the Central Dudley Area Committee on the 12th June 2007, Cllr Ahmed asked for new street name plates to be erected in Spring Parklands.

**Comments:** The street name plates for Spring Parklands have been ordered. The manufacturer is currently closed down for three weeks for refurbishment. On their re-opening a delivery date will be sought, following which installation will be programmed.

**Proposal:** That the Area Committee note the information contained in this paragraph.

**17. RUSSELLS HALL ESTATE - TRAFFIC CALMING MEASURES**

**Background:** At the Central Dudley Area Committee on the 12th June 2007, Cllr Ahmed requested a review of the current traffic calming measures on Russells Hall Estate.

**Comments:** A review of the current traffic calming measures throughout the Russells Hall Estate is taking place. The high financial cost of removing traffic calming is difficult to justify when communities in other parts of the Borough have no such facilities and have requested similar measures to be considered.

**Proposal:** That the Area Committee note the information contained in this paragraph.

**18. WELLINGTON ROAD - ZEBRA CROSSING**

**Background:** At the Central Dudley Area Committee on the 12th June 2007, Cllr Ahmed raised concerns about the zebra crossing on Wellington Road. He stated that many drivers refuse to stop at the crossing and requested that traffic officers consider converting the crossing to a traffic light operated crossing to ensure drivers stop for pedestrians.

**Comments:** The two zebra crossings in Wellington Road - one near to the Sikh Gurdwara and the other south of Dock Lane, will be considered during the next financial year for possible conversion to pelican crossings as part of a future annual Pedestrian Crossing Programme.

**Proposal:** That the Area Committee note the information contained in this paragraph.

**19. OVERFIELD ROAD - PEDESTRIAN CROSSING**

**Background:** At the Central Dudley Area Committee on the 12th June 2007, Cllr Craigie requested the installation of a pedestrian crossing in Overfield Road.

**Comments:** This request will be considered, with other similar requests, for possible inclusion in a future year's annual pedestrian crossing programme.

**Proposal:** That the Area Committee note the information contained in this paragraph.

**20. SCOTTS GREEN CLOSE ANTI-SKID PATCHING**

**Background:** At the Central Dudley Area Committee on the 12th June 2007, Cllr Craigie expressed concern at plans to lay anti-skid patching in Scotts Green Close. She suggested that this is unnecessary in light of the road humps and 20 mph speed limit in the area and requested that a new pedestrian crossing be installed in the area instead.

**Comments:** The introduction of anti-skid carriageway surfacing in the main section of Scotts Green Close will not be pursued.

**Proposal:** That the Area Committee note the information contained in this paragraph.

## **21. DUDLEY TOWN CENTRE - TRAFFIC MANAGEMENT**

**Background:** At the Central Dudley Area Committee on the 12th June 2007, Cllr Craigie expressed concern regarding traffic management in Dudley Town Centre. She stated that she had personally seen cars parking illegally on double yellow lines and in disabled parking spaces.

She requested that Stone Street be converted back into a public car park and that an urgent overall assessment of traffic management in the town centre be undertaken.

**Comments:** Following the introduction of Council-controlled on-street parking enforcement, which is programmed for next year, consideration can be given to particular problems in town centres to assist shoppers whilst reducing instances of obstructive parking.

There are no plans to convert the landscaped square around Stone Street into a public car park. It is hoped that the open square has become a force for regeneration. It has already been used for "Children's' Olympics", rock and fossil festivals, the Dudley Pageant, Armistice Day and VE Day ceremonies, Police community days, marching band festivities and the Mayor's Christmas concert.

**Proposal:** That the Area Committee note the information contained in this paragraph.

## **22. CORBYN ROAD TREES**

**Background:** At the Central Dudley Area Committee on the 12th June 2007, Cllr Roberts requested that trees in Corbyn Road be trimmed back urgently as they are causing inconvenience to residents.

**Comments:** The trees in Corbyn Rd have been condition assessed and works orders have been raised on a 6 month target time-frame.

**Proposal:** That the Area Committee note the information contained in this paragraph.