

Office of Public Health

Report to the Health Scrutiny Committee

**Update on Transfer of the 0-5 years Public Health Commissioning to Local Authorities**

**1.0 Purpose**

The purpose of this report is to update the committee on the local authorities' new commissioning responsibilities for 0-5year olds.

**2.0 Background**

**Health Visitor Service**

The Health Visiting Service is a workforce of specialist community public health nurses who provide expert advice, support and interventions to families with children in the first years of life, and help empower parents to make decisions that affect their family's future health and wellbeing. This service is led by health visitors and supported by a skill mix team. The service is central to delivering public health outcomes for children.

The start of life is a crucial time for children and parents. Good, well resourced health visiting services can help ensure that families have a positive start, working in partnership with GPs, maternity and other health services, Sure Start Children's Centres and other early years services.

The **Health Visitor Implementation Plan 2011-2015** set out a call to action to expand and strengthen health visiting services. As well as bringing in new recruits, the programme would offer existing health visitors the opportunity to refresh and develop their skills.

The period up to 2015 saw:

- more health visitors in training and returning to practice
- growing numbers of health visitors in post
- a more comprehensive health visiting service locally.

An extra 4,200 health visitors were recruited following the national 'Call to Action' and locally numbers increased to 72 Health Visitors across the Dudley Borough.

## **National specification**

In December 2013 NHS England published a National Health Visiting Core Service Specification for 2013/14. This document set out what all families can expect from their local Health Visiting service. This included:

- **Four service levels**
  - Community offer
  - Universal offer
  - Universal partnership offer
  - Universal partnership plus offer
  
- **Mandated elements of the Healthy Child Programme**
  - Antenatal health promoting review (new)
  - New baby review
  - 6-8 week assessment (separate to GP assessment)
  - One year assessment
  - 2 to 2.5 year review
  
- **Six priorities for demonstrating success and building sustainable services post 2015:**
  - Transition to parenthood and the early weeks
  - Maternal mental health (PND)
  - Breast feeding (initiation and duration)
  - Obesity to include nutrition and physical activity
  - Health and wellbeing at 2 (development of the child two year old review (integrated review) and support to be 'ready for school')
  - Managing minor illness and reducing accidents (reducing hospital attendance/admissions)

## **FNP**

The Family Nurse Partnership programme (FNP) is an intensive and structured preventative programme for first time mothers. It offers intensive home visits, delivered by specially trained nurses, from early pregnancy until the child is two years old. The programme aims to improve pregnancy outcome, child development and breaks and cycle of poverty.

The FNP programme have been evaluated through a high quality research in the USA and the UK and has been found to have the following benefits:

- Improved prenatal health
- Fewer childhood injuries
- Fewer subsequent pregnancies and greater intervals between births
- Increased maternal employment
- Improved school
- Improved emotional and behavioural development

The FNP programme began in England in 2007 as a pilot in 10 sites. There are now over 50 sites across England offering places to over 6,500 families.

The NHS operating framework 2012/13 states that the delivery of FNP should continue and the programme is to double its capacity by April 2015 to improve outcomes for the most vulnerable first time teenage mothers and their children.

Dudley Borough has a range of 140-193 under 19 first time pregnancies per year with ninety percent of under 18 conceptions occurring in the three most deprived areas.

### **3.0 Progress to Date**

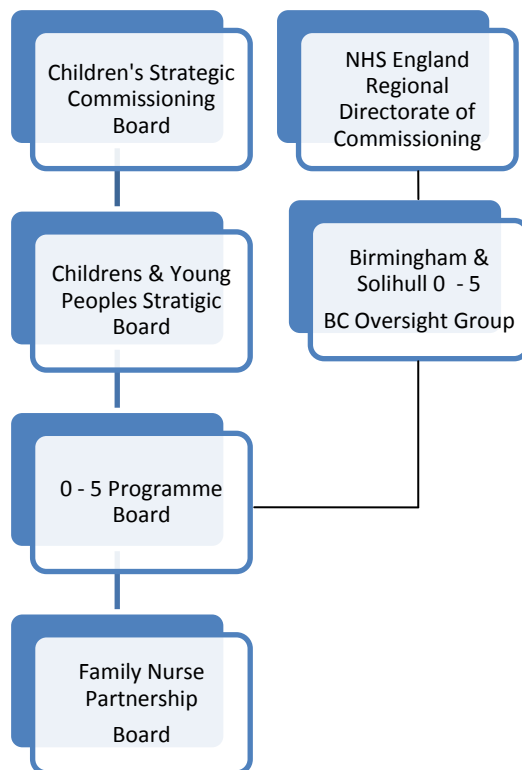
#### **Commissioning provision**

Currently the Health Visitor service in Dudley is provided by the **Black Country Partnership NHS Foundation Trust**. This contract is monitored quarterly against a set of national and local quality requirements. It is the intention to continue and to build upon this working relationship to minimise the need for changes to contract, in the first instance, and to ensure stability of services.

Co-commissioning and other commissioning partnerships and networks between Dudley Council, Dudley Clinical Commissioning Group, Local Area Teams, NHS England and other early years and children's commissioners have been established. These networks offer further assurance of a safe and robust transfer.

#### **Governance**

Governance arrangements are in place to support a partnership approach to the transfer of Health Visiting commissioning responsibilities to the Local Authority from October 2015.



In September 2014 Dudley under 5's programme board was set up to ensure the delivery of the Health Visitor (HV) Implementation Plan including, increasing the HV workforce, monitoring delivery against the section 7a specification, supporting the transformation of the service in line with local health priorities and providing assurance re the commissioning of the Family Nurse Partnership (FNP) and overseeing its expansion.

The Board will also oversee the transition of the commissioning responsibilities for 0-5 aged public health services from NHS England to the Local Authority. Currently chaired by Local Area Team and vice chaired by OPH.

The board will

- Provide scrutiny of provider performance to reach their workforce trajectories by March 2015
- Effectively implement the national Health Visiting service specification ensuring delivery against the national targets.
- Provide oversight and scrutiny of provider performance through monitoring of quarterly performance indicators and quality standards
- Review any risks or incidents identified within the service.
- Provide intelligence re the delivery of the Healthy Child Programme (HCP) to the national transformation team and the Nursing Directorate NHS England.
- Make appropriate plans for the safe integration of commissioning arrangements into Local Authority arrangements.

- Further develop co-commissioning arrangements
- Ensure the compliance of the FNP licence and the scrutiny of the fidelity goals and the service expansion

Family Nurse Partnership -A separate board has been set up to provide governance to this partnership. It is chaired by OPH has multiagency representation and reports into the 0-5 Programme Board.

### **Transfer Preparations**

- First phase of due diligence has been undertaken
- OPH in a strong partnership position to receive transfer
- Support and commitment at a strategic level including the Health & Wellbeing Board
- Regional 0 – 5 Oversight group set up and functioning well
- Improved communication and support from Local Areas Teams to ensure safe transfer

### **4.0 Finance**

- Transfer allocations are based on resident population not GP registered.
- Financial allocations agreed and additional commissioning resource secured within the ring fenced Public Health grant.
- Principles of an 'open book' accounting procedures and information sharing will be maintained for this transfer and onward contract monitoring.
- National consultation on Future financial baseline agreement exercise on allocations completed in January 2015
- Current contract value in 2015/16 **£4,757,599** with some additional funds for 2 x extra FNP nurses.

### **5.0 Next Steps**

- To finalise the contract and key performance indicators for the 2015/16 contract.
- To oversee the arrangement re the financial transfer and contract novation in October 2015
- Ensure processes for due diligence are in place.
- To share guidance from national local authority and NHS England communication channels
- To work in partnership with Children's Services and the current provider to scope an integrated 0-5 offer with a key focus on Children's Centres and parenting programmes.


- Provide Public Health Leadership and support to the HV workforce to deliver a local service based on local need.

## **6.0 Recommendations**

Members of the committee are asked to note the contents of this report.

## **7.0 Supporting Documents (available on request if required)**

- Department of Health, *Health Visitor Implementation Plan: A Call to Action*. (February 2011).
- NHS England, *2015-16 National Health Visiting Core Service Specification* (October 2014).



**Karen Jackson**  
**Deputy Director of Public Health**  
**DMBC**

**Contact Officer:**  
**Bal Kaur**  
**Consultant in Public Health**  
**DMBC**