

Quarterly Corporate Performance Management Report Summary for Scrutiny Committee on Children's Services

Quarter 4 (January to March 2011)



Quarterly Corporate Performance Management Report

Contents

Section 1: Introduction	Page 3
Section 2: Performance Summary Quarter 4 2010/11	Page 4
Section 3: Reporting on Council Action Plan Priorities	Page 5

Health and Wellbeing
Individual and Community Learning
Community Safety
Quality Service

Section 1

Introduction

This Summary is taken from the fourth Quarterly Corporate Performance Management Report of 2010/11 highlighting performance for the period January to March 2011.

The report continues to be presented using the traditional performance framework while the Chief Executive's directorate work with colleagues across the Authority to undertake a review of the current arrangements, taking into account the changing national requirements.

Following consideration by Corporate Board, the Cabinet Performance Management Sub-Group and Cabinet, the full report will be made available to the public via the internet.

The main body of the report focuses on the seven priorities contained in the Council Plan and progress against the key performance indicators and activities used to determine our delivery of these priorities is included in **Section 3**.

A performance summary, incorporating the key service achievements and issues affecting Dudley MBC during quarter 4, is included in **Section 2**.

To view copies of all Quarterly Corporate Performance Management Reports please use the link below:

<http://www.dudley.gov.uk/council--democracy/performance-matters-in-dudley/performance-reporting>

Section 2

Performance Summary

Quarter 4 2010/11

This section summarises the performance information and key achievements and issues affecting children's services in Dudley that are addressed in detail in the main body of the report.

There follows a brief summary of performance for each Council Plan priority, including any significant achievements and challenges. The detail behind these headlines is included in Section 3 of the report.

Individual and Community Learning

Performance Review

Highlights

- New in house Libraries course, 'Books are our Business' launched with excellent feedback
- A 'Teenager and Engagement' librarian has worked with five groups of young people who selected stock for their local libraries to agreed budgets. The librarian has engaged with young people from the gypsy, Roma and traveller community, teenage mums, young people with learning disabilities, transition age pupils in Gornal and teenage members of Cradley library

Section 3




Reporting on Council Action Plan Priorities

The Council Plan 2013 sets out the Authority's priorities for the three-year period 2010 to 2013. It provides a focus on where we want to be over the next three years and outlines how we are planning to meet the aspirations of the Community Strategy and the challenges of the Next Generation Local Area Agreement.

This section provides a detailed review of the progress of the key performance indicators and activities contained within the Council Action Plan.




Traffic light status indicators are used to denote performance as follows:

In terms of the **key activities** they represent the following progress:

-  Good (ahead of schedule)
-  Fair (on schedule)
-  Poor (behind schedule)

NB: The Directorate of Children's Services provide narrative only and do not apply a performance alert.

For **key performance indicators** they represent performance as:

-  Better than target limits
-  Within target limits
-  Worse than target limits

Comments are included for key performance indicators where performance is below target limits or where additional, useful intelligence is available.

Scrutiny Committees receive a summary of this report based on their areas of interest. For clarity, key performance indicator scorecards include reference to the Scrutiny Committee monitoring its performance.

Use the link below to view the Council Action Plan 2013:

<http://www.dudley.gov.uk/council--democracy/plans-policies--strategies/councilplan>



Health and Wellbeing

Priority 1 Tackle the problem of obesity

Key Activities

Direct.	Ref.	Description	Q4 Status	Update	Lead Officer
DCS	HW1.1b	Support children and young people to become and remain healthy – Reducing the incidence of obesity amongst primary aged children by the time they reach year 6	-	<ul style="list-style-type: none"> 2010/11 figures will be released in December 2011. 	Julia Simmonds

Key Performance Indicators

Direct.	Ref.	Definition	08/09 Actual	09/10 Actual	10/11 Target	Q1 Actual	Q2 YTD Actual	Q3 YTD Actual	Q4 YTD Actual	Select Committee
DCS	NI 056i (NGLAA)	% of children in year 6 with height and weight recorded who are obese	20.18%	20.8%	22.7%	2010/11 figures will be released in December 2011			23.8%	Health and Adult Social Care & Children's Services
										
DCS	NI 056ii (NGLAA)	% of children in year 6 with height and weight recorded	92.93%	93%	85% (National target)	Exceeded target by 13% for participation rate for year 6			98%	Health and Adult Social Care & Children's Services
										

Health and Wellbeing

Priority 2 Tackle inequality in physical health and mental wellbeing

Key Activities

Direct.	Ref.	Description	Q4 Status	Update	Lead Officer
DCS	HW2.2a	Support all children to be and feel safe – Finalise and agree Anti-Bullying Strategy and ensure its effective implementation, especially within schools	-	<ul style="list-style-type: none"> Action plan agreed and on target. Anti-bullying policy, guidance and serious incident protocol agreed. Stage 3 (Implementation) of action plan in progress. 	Ian McGuff
DCS	HW2.2b	Improve the effectiveness of early intervention for vulnerable children and young people to be safe from maltreatment, neglect, violence and sexual exploitation	-	<ul style="list-style-type: none"> Funding has been secured for the continuation of support for CAF for 2011/12 and the team restructured to focus on areas of greatest need. The signs of safety project has commenced within the Brierley Hill area, we are renegotiating our service level agreements with Homestart to provide a targeted family support service. Evaluations of parenting interventions have indicated positive outcomes and investment for continuation of the programmes has been secured from the early intervention grant. Our unannounced inspection took place in February and identified that there has been good progress in the development of CAF, there is a good variety of family support services and assessments undertaken as part of child protection investigations are thorough and timely 	Pauline Sharratt
DCS	HW2.2c	Ensure looked after children have security, stability and are cared for	-	<ul style="list-style-type: none"> Looked after child nurse post recruited to taking up appointment May 2011. KEEP Programme continues to be a positive option for carers and is demonstrating improvements in carers confidence and placement stability. LAC Psychologist Post recruited to in post May 2011. 	Pauline Sharratt
DCS	HW2.3a	Support children and young people to become and remain healthy – Reducing teenage pregnancy rates	-	<ul style="list-style-type: none"> Family Information Service is supporting this target by including Emergency Hormonal contraception pharmacies and c card venues on the Family Service Directory which is visible through Launchpad website Baseline (SRE Toolkit) is now in 12 secondary schools and is working well amongst these schools. RYC coordinator in HPS is supporting the progression of the baseline into schools and providing necessary support to schools. We are now hoping to begin to develop an effective relationships and self-esteem baseline for Primary schools over the 6-12 months to be launched in September 2011. RYC coordinator in 'You First@ Multi-agency drop-ins are still in development with School health Advisors and schools. The first drop-in has still not started and there are still issues with the drop-ins. Respect Yourself Campaign are working with School Health Advisors and Schools to try to actually launch the drop-ins. It is hoped that the drop-ins will be in 3 secondary schools by September 2011 Peer Education is running in all 4 colleges and is averaging approximately 20 young people per 1 hour drop in per week. This project will be continuing next year in partnership with smoking 	Rachel Allen

Key Activities					
Direct.	Ref.	Description	Q4 Status	Update	Lead Officer
				<p>cessation but as yet we are unclear of funding being provided through smoking cessation so definite plans have not been developed. However the drop-ins within the colleges will continue for another year. Over the next 12 months RYC manager will be working with colleges to look at financial contribution to this project</p> <p>DEPART is now being developed beyond Social Care to ensure early intervention and prevention is provided to those young people most at risk of teenage pregnancy. During the last quarter the Tool has been rolled out with more School Health Advisors, The Zone, and Nacro. There has not been any further training developed as yet but we are hoping over the next quarter to work with Education Welfare and Connexions</p> <p>Teenage Parents - A new referral process has been developed through RYC to ensure that teenage parents can be given the most appropriate support where possible on reduced resources and issues with current support provided through health. All low/medium risk are referred directly to Connexions and all Children's Centres to provide support. All high level teenage parents are seen by the support manager we are working closely to provide packages of support for these young people to try to ensure success. These case are retained by the specialist member of staff until risk reduces.</p> <p>SHON - The sexual health outreach worker has proved to be a very successful role and in the last quarter alone has provided 37 young women with contraception. Any worker across the team refers appropriate cases to the SHON.</p> <p>TATP meetings (Team around the teenage parent) are proving to support the work and allow packages of support for the most vulnerable teenage parents to be developed and delivered appropriately.</p> <p>Other Work - RYC are currently working closely with health visiting to ensure additional support can be provided where needed to reduce the risk for teenage parents and work with the SHON to prevent second conceptions</p>	

Key Performance Indicators

Direct.	Ref.	Definition	08/09 Actual	09/10 Actual	10/11 Target	Q1 Actual	Q2 YTD Actual	Q3 YTD Actual	Q4 YTD Actual	Select Committee
DCS	NI 059	% of initial assessments for children’s social care carried out in less than 7 working days	66.3%	55.5%	70%	55.9%	61.2%	62.6%	69.3%	Children’s Services
						▲	▲	▲	●	
Comment for NI 059: <ul style="list-style-type: none">The volume of initial assessments has levelled out and performance has continued to improve.										
DCS	NI 062	% of looked after children with 3 or more placements during the year	10.6%	12.1%	11%	12.9%	11.9%	11.8%	9.2%	Children’s Services
						▲	●	●	★	
DCS	NI 066	% of looked after children cases which should have been reviewed during the year ending 31 st March that were reviewed on time (within 28 days of placement, then within three months and six-monthly thereafter - subject to rescheduling if there are significant changes to the child’s care plan)	9.2%	79%	80%	83.2%	77.2%	75%	78.8%	Children’s Services
						●	●	▲	●	
Comment for NI 066: <ul style="list-style-type: none">(Provisionally) 23 late reviews during quarter 4. Capacity issues have continued to impact.										
DCS	NI 067	% of child protection cases which were reviewed within required timescales	100%	100%	100%	100%	100%	97.8%	96.90%	Children’s Services
						★	★	●	●	
DCS	DCS CF 039	% of private fostering assessments completed within 42 days	New PI	0%	50%	0%	0%	0%	5%	Children’s Services
						▲	▲	●	●	

Individual and Community Learning

Priority 1 Widen participation in adult and family learning to enhance personal and social development, knowledge and skills, employability, health and wellbeing

Key Activities

Direct.	Ref.	Description	Q4 Status	Update	Lead Officer
DCS	ICL1.2a	Improve attendance and behaviour at school	-	<ul style="list-style-type: none"> Some significant improvements have been achieved - e.g. Dudley's average time to find alternative provision for excluded pupils below the National average. However, the Education Bill presents challenge for this work - schools no longer have to provide some data and preventative support work has become a traded service. We will need to evaluate the impact on this.. 	Jon McCabe
DCS	ICL1.2b	Improve outcomes for children aged 0-11 (early years and primary)	-	<ul style="list-style-type: none"> Schools in OfSTED categories continue to make good progress. However, from April 1st this work ceases to be a statutory responsibility for the Local Authority schools in OfSTED categories will be monitored and supported directly from the DfE we will all need to evaluate the impact of this. 	Trish Britain
DCS	ICL1.2c	Improve outcomes for children and young people aged 11-19 years (or to aged 25 for those with disabilities)	-	<ul style="list-style-type: none"> Secondary schools continue to make good progress. Support from the LA services has received favourable evaluations from schools and, where applicable, OfSTED monitoring visits 	Steve Lockwood
DCS	ICL1.2d	Support children and young people to achieve economic and social wellbeing – Increase the proportion of young offenders in employment, education and training	-	<ul style="list-style-type: none"> The YOS continues to improve in this area, in spite of the economic climate. Path4everyone continues to offer a comprehensive service to unemployed young people in the cohort 	Mike Galikowski

Key Performance Indicators



Direct.	Ref.	Definition	08/09 Actual	09/10 Actual	10/11 Target	Q1 Actual	Q2 YTD Actual	Q3 YTD Actual	Q4 YTD Actual	Select Committee
DCS	NI 045	% young offenders engaged in suitable Education, Employment or Training (EET)	76.9%	82.4%	90%	71.4%	68.7%	Data will not be available until end of January	Data not available until end April'11	Children's Services
						▲	▲			
DCS	NI 087	% of pupils persistently absent (PA) in secondary schools maintained by the LEA	6.3%	4.37%	5%	4.37%	4.37%	4.37%	See comment	Children's Services
						★	★	★		

Comment for NI 087:

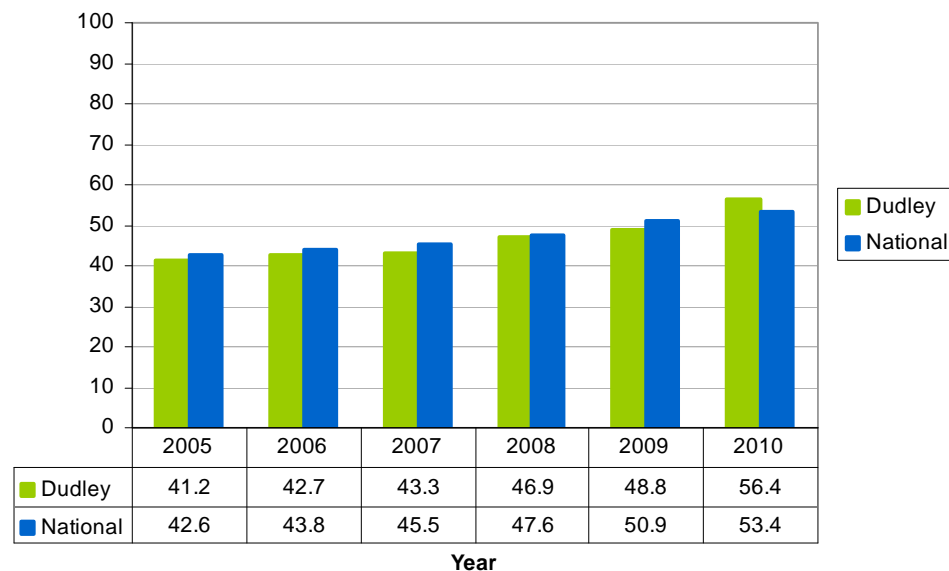
- Schools are no longer required to make returns on persistent absence.

Key Performance Indicators										
Direct.	Ref.	Definition	08/09 Actual	09/10 Actual	10/11 Target	Q1 Actual	Q2 YTD Actual	Q3 YTD Actual	Q4 YTD Actual	Select Committee
DCS	NI 117	% 16 – 18 years olds who are not in education, employment or training (NEET)	5.3%	4.9%	Awaiting guidance	4.6%	n/a	4.4%	n/a See comment	Children's Services
Comment for NI 117: <ul style="list-style-type: none"> NEET remains at a low level. This is expected to rise as school leavers officially leave. A focus for this Quarter has been supported Year 11 potential labour market entrants. These young people are supported to ensure they do not become NEET. There has also been a huge drive promoting apprenticeships which has included one to one, groundwork, information sessions to teachers and assembly presentations. Post 16 Commissioning Team and Connexions have worked closely to start preparing to work with the successful providers who are going to offer the NEET programme. <ul style="list-style-type: none"> Once NEET ESF contracts have been issued we shall share information across local authority officers, Connexions and partners and stakeholders to ensure that the partnership collectively works together to improve the support for NEET and vulnerable young people.. 										
DCS	BV 045	% of half days missed due to TOTAL (that is authorised & unauthorised) absences in secondary schools maintained by the LEA	7.57%	6.82%	7.6%	6.82%	6.82%	6.82%	6.82%	Children's Services
						★	★	★	★	
DCS	BV 046	% of half days missed due to TOTAL (that is authorised & unauthorised) absences in primary schools maintained by the LEA	6.01%	5.75%	6%	5.75%	5.75%	5.75%	6.15%	Children's Services
						★	★	★	★	

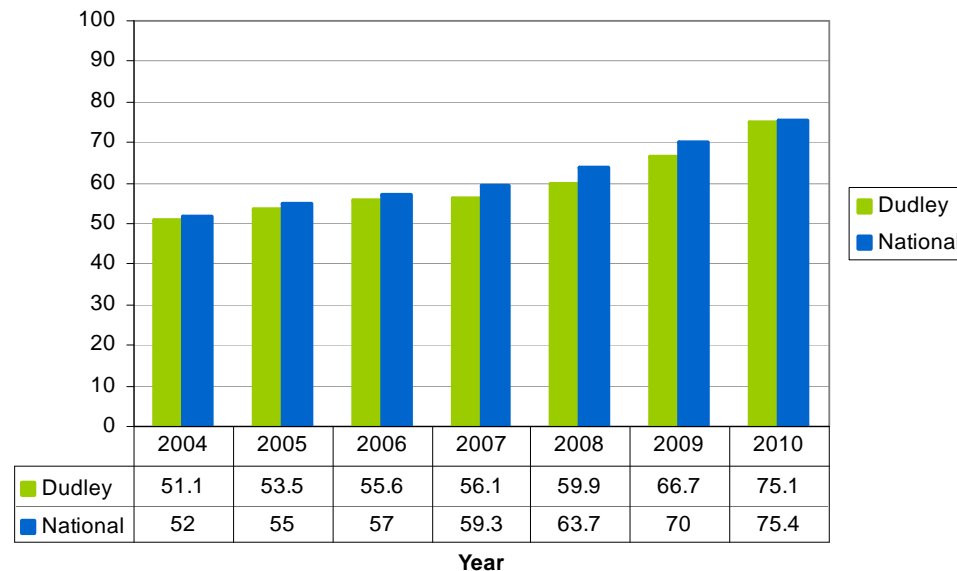
The scorecard below shows the latest validated educational attainment data for the 2009/10 academic year:

Key Performance Indicators					
Direct.	Ref.	Definition	09/10 Academic Year	Comment	Select Committee
DCS	NI 072	% of children assessed against the Early Years Foundation Stage Profile (FSP) achieving 78 points (with at least 6 in each of the scales in personal, social and emotional development and communication, language and literacy)	52%	<ul style="list-style-type: none"> 52% of children in Dudley achieved a good level of development in 2010 and is an increase of 9% compared to 2009. This figure is 4% below the National figure (which improved by 4%). Over the last three years the percentage for Dudley has increased by 17%, while the National increase has only been 11%. 	Children's Services
					
DCS	NI 075	% of pupils achieving 5 or more A*-C or equivalent, including English and maths, at Key Stage 4	56.4%	<ul style="list-style-type: none"> Dudley secondary schools are collectively celebrating their best ever GCSE performance. Confirmed and final GCSE data for Summer 2010 will be available mid January 2011 and a slight variation is expected due to a schools' data checking exercise. The charts below highlight the improvement in Dudley's GCSE performance. 	Children's Services
					

% 5+ A*-C inc. English & Maths



% 5+ A*-C



Key Performance Indicators

Direct.	Ref.	Definition	09/10 Academic Year	Comment	Select Committee
DCS	NI 073	% of pupils achieving level 4 or above in both English and maths at Key Stage 2	See comment	<ul style="list-style-type: none"> New floor targets have been set by the DFE of 60% Level 4+ in both English and Mathematics at the end of KS2. The Local Authority will not have a statutory duty to support schools from April 1st. We will need to evaluate the impact of the new Education Bill in this area 	Children's Services
DCS	NI 076	Number of schools in local authority area where fewer than 65% of pupils achieve level 4 or above in both English and Maths at Key Stage 2	See comment	<ul style="list-style-type: none"> New floor targets have been set by the DFE of 60% Level 4+ in both English and Mathematics at the end of KS2. Only one school has set targets below this. The Local Authority will not have a statutory duty to support schools from April 1st. We will need to evaluate the impact of the new Education Bill in this area. 	Children's Services

Individual and Community Learning

Priority 2 Remove barriers to learning and supporting local people, particularly vulnerable groups, to raise their aspirations and to realise their potential






Key Activities

Direct.	Ref.	Description	Q3 Status	Update	Lead Officer
DCR	ICL2.1b	Increasing school attendance by issuing prosecutions for non-school attendance within 14 days of receipt of instructions	★	21 cases of which 13 were issued in 14 days - 62% performance against target of 56%	Mohammed Farooq

Key Performance Indicators

Direct.	Ref.	Definition	08/09 Actual	09/10 Actual	10/11 Target	Q1 Actual	Q2 YTD Actual	Q3 YTD Target	Q3 YTD Actual	Select Committee
DCR	L&P LDS 129	% of prosecutions for non-school attendance issued within 14 days of receipt of instruction	73%	Change in court process	56%	67%	95%	56%	80%	Children's Services
						★	★		★	

The scorecard below shows the latest validated educational attainment data for the 2009/10 academic year:

Key Performance Indicators					
Direct.	Ref.	Definition	09/10 Academic Year	Comment	Select Committee
DCS	NI 099	% looked after children who have been in care for at least one year who were in year 6 and achieved at least level 4 in English at Key Stage 2	46%	<ul style="list-style-type: none"> The SATs boycott has impacted on availability of results for the 2009/10 academic year. Results received, however, show an increase of 8.6 percentage points on the previous year. Sustaining 2010 improvements is being made more difficult by the need to withdraw funding from several key programmes. Work is currently ongoing where funding remains. 	Children's Services
					
DCS	NI 092	% gap between the lowest achieving 20% in the early years foundation profile and the rest	32%	<ul style="list-style-type: none"> At 32%, we narrowly missed the narrowing the gap target of 31.8% by one child. The trend over 3 years is an improvement of 7.5%. Dudley's result is lower than the national figure of 32.7%. Dudley is ranked 7th out of the 14 West Midlands local authorities for narrowing the gap. This is a significant improvement on last year when Dudley's position was much lower. 	Children's Services
					
DCS	NI 100	% looked after children who have been in care for at least one year who were in year 6 and achieved at least level 4 in maths at Key Stage 2	-	<ul style="list-style-type: none"> The SATs boycott has impacted on availability of results for the 2009/10 academic year. Sustaining 2010 improvements is being made more difficult by the need to withdraw funding from several key programmes. Work is currently ongoing where funding remains. 	Children's Services
DCS	NI 101	% looked after children who have been in care for at least one year who were in year 11 and achieved at least 5 A*-C GCSEs or equivalent including English and maths	-	<ul style="list-style-type: none"> National data shows Dudley figure to be 32% which is 13% higher than target, 24% higher than last year, and places Dudley 3rd in the national table. Both authorities that were placed above Dudley had cohorts half the size of Dudley 	Children's Services
DCS	NI 102i	% point gap between pupils eligible for free school meals and their peers achieving the expected level at Key Stage 2	24.6%	<ul style="list-style-type: none"> The two groups investigating ways of supporting pupils eligible for free school meals in now developing well and has grown, now involving 11 secondary schools. The groups meet regularly and share good practice. Activities put in place to help pupils eligible for FSM are developing well and each school is pleased with the progress made so far 	Children's Services
					
DCS	NI 102ii	% point gap between pupils eligible for free school meals (FSM) and their peers achieving the expected level at Key Stage 4	30%	<ul style="list-style-type: none"> Support for pupils eligible for FSM is developing well. Schools hope they are on track to close the gap in achievement that has been persistently around 30% for the last few years. Significant work around raising aspirations is well in place 	Children's Services
DCS	NI 107	% point gap between pupils in low attaining minority ethnic groups and their peers achieving the expected level at Key Stage 4 (figures shown are percentage of pupils achieving)	78.3% English 78.6% Mathematics	<ul style="list-style-type: none"> Very good progress has been made KS1-2. 2 Levels progress English 89.5% and Mathematics 89.3% Primary EAL Consultant is working in 6 primary schools. 	Children's Services
					
DCS	NI 108	% point gap between pupils in low attaining minority ethnic groups and their peers achieving the expected level at Key Stage 4 (figures shown are percentage of pupils achieving)	57.2%	<ul style="list-style-type: none"> EMAS Classes continues to flourish. This term the class has catered for 12 newly arrived pupils (all KS3/4). 6 have been mainstreamed to schools and making good progress. The remainder are awaiting decision from the Pupil Panel. Parent Forum meetings will be taking place this term at our new site. EMAS staff will deliver the training to empower parents to deal with school related matters for their children. Family support offices have continued to help parents, children and schools on varying schooling and social matters to good effect. Links with GRT team have been maintained.. 	Children's Services
					

Community Safety

Priority 1 Strengthening trust and confidence by working to prevent and reduce crime and antisocial behaviour

Key Activities

Direct.	Ref.	Description	Q4 Status	Update	Lead Officer
CEX	CS1.1e	Coordinate delivery of Operation Stay Safe	★	<ul style="list-style-type: none"> New appointment based system trialled. Four sessions undertaken this quarter. Going into new financial year, the project has been paused whilst an evaluation takes place during the spring 	Andy Winning

Community Safety

Priority 2 Substance misuse – engaging misusers into interventions at an early stage

Key Activities

Direct.	Ref.	Description	Q3 Status	Update	Lead Officer
DUE	CS2.3a	Reduce harm to children by limiting the access to alcohol	●	<ul style="list-style-type: none"> For the full year 74 test purchases for alcohol were carried out with 6 sales. 	Nick Powell
CEX	CS2.3c	Support children and young people to become and remain healthy – Reduce alcohol and substance misuse among young people	★	<ul style="list-style-type: none"> 86.2% of young people left treatment in an agreed and planned way with 88% being referred on to other services for ongoing support. This maintains Dudley as one of the best performers in the region and significantly above the national average of 73%. Strong partnership working with YOS, Connexions and CAMHS services. 	Audrey Heer
CEX	CS2.3d	Implementation of actions from the Children and Young Persons Substance Misuse Plan	★	<ul style="list-style-type: none"> Completion of needs assessment and action plan for 2011/2012. Data from the Healthy Lifestyle shows there has been a steady decline in the use of alcohol by school pupils over the past 6 years and reported drug use by young people has fallen again since 2008. Due to reduction in capacity to deliver education within schools this may lead to an increase in substance misuse. Cannabis use is still the top drug of choice. These young people are at much greater risk of becoming victims of violence and aggression and carrying weapons than those who have been drunk. Concern that focus in the Borough seems to be on alcohol issues and not drugs 	Audrey Heer
CEX	CS2.3e	Ensure that systems are in place to provide support to young people with alcohol issues identified through Operation Stay Safe	●	<ul style="list-style-type: none"> Agencies involved in Operation Stay Safe providing targeted alcohol interventions with young people accessing the project. Problematic users are referred to the Zone for support. Evaluation to be completed to identify changes in behaviour etc of those who have accessed and been supported through Operation Stay Safe. 	Audrey Heer/ Andy Winning

Key Activities

Direct.	Ref.	Description	Q3 Status	Update	Lead Officer
CEX	CS2.3f	Ensure that staff working with children and young people are trained to provide universal education and or targeted interventions	●	<ul style="list-style-type: none"> Due to reduction in capacity to train the generic workforce in 2011-12 focused promotion of substance use training to the children and young peoples workforce resulted in an increased take-up by foster carers and children's social care teams. 	Audrey Heer/ Children & Young Persons Misuse Group

Quality Service

Priority 2 Resource efficiency

Key Activities

Direct.	Ref.	Description	Q3 Status	Update			Lead Officer
DCS	QS2.3k	Increase use of the Common Assessment Framework (CAF) across the Directorate of Children's Services	-	Agency	Number of CAF Started	Performance	Mike Wood
				Directorate	467	36.46%	
				Connexions	76	5.93%	
				Prospects	2	0.16%	
				Children's Centres	202	15.77%	
				Social Care	101	7.88%	
				Education Welfare Service	10	0.78%	
				Parent Support Advisors	33	2.58%	
				Respect Teenage Pregnancy	2	0.16%	
				Autism Outreach	3	0.23%	
				Integrated Services	14	1.09%	
				Youth Service	10	0.78%	
				Youth Offending Team	1	0.08%	
				Adult Mental Health	4	0.31%	
				Pupil Access	2	0.16%	
				Extended Services	2	0.16%	
Specialist Early Years	5	0.39%					

Key Activities					
Direct.	Ref.	Description	Q3 Status	Update	Lead Officer
				<p>The proportion of common assessments started by the directorate has decreased from 39.03% to 36.46% in 2010-11. It peaked in Quarter 2 at 42.56%. Approximately 40% of the directorate's CAFs are started by children's centres. Nearly 20% of the directorate's CAFs are started by social care which indicates use of CAF at a high threshold of need.</p> <ul style="list-style-type: none"> It is disappointing that Youth Services, Prospects and the Education Welfare Service have still. 	