

HILLCREST ARTS PROJECT

FUNDING

Long term deposit		319612	
Devolved Capital	2005/2006	110795	
Devolved Capital	2006/2007	89468	} Advised by accountancy
Devolved Capital	2007/2008	93344	
Expanding Popular Schools		400000	Anticipated
Specialist College Grant		150000	
Projected roll forward	2005/2006	136781	Confirmed with Jas Patel
Projected roll forward	2006/2007	50000	Confirmed with Jas Patel

1350000

Estimated cost of project 1350000
Available 1350000

shortfall 0

REVISED JANUARY 2006

HILLCREST ARTS PROJECT

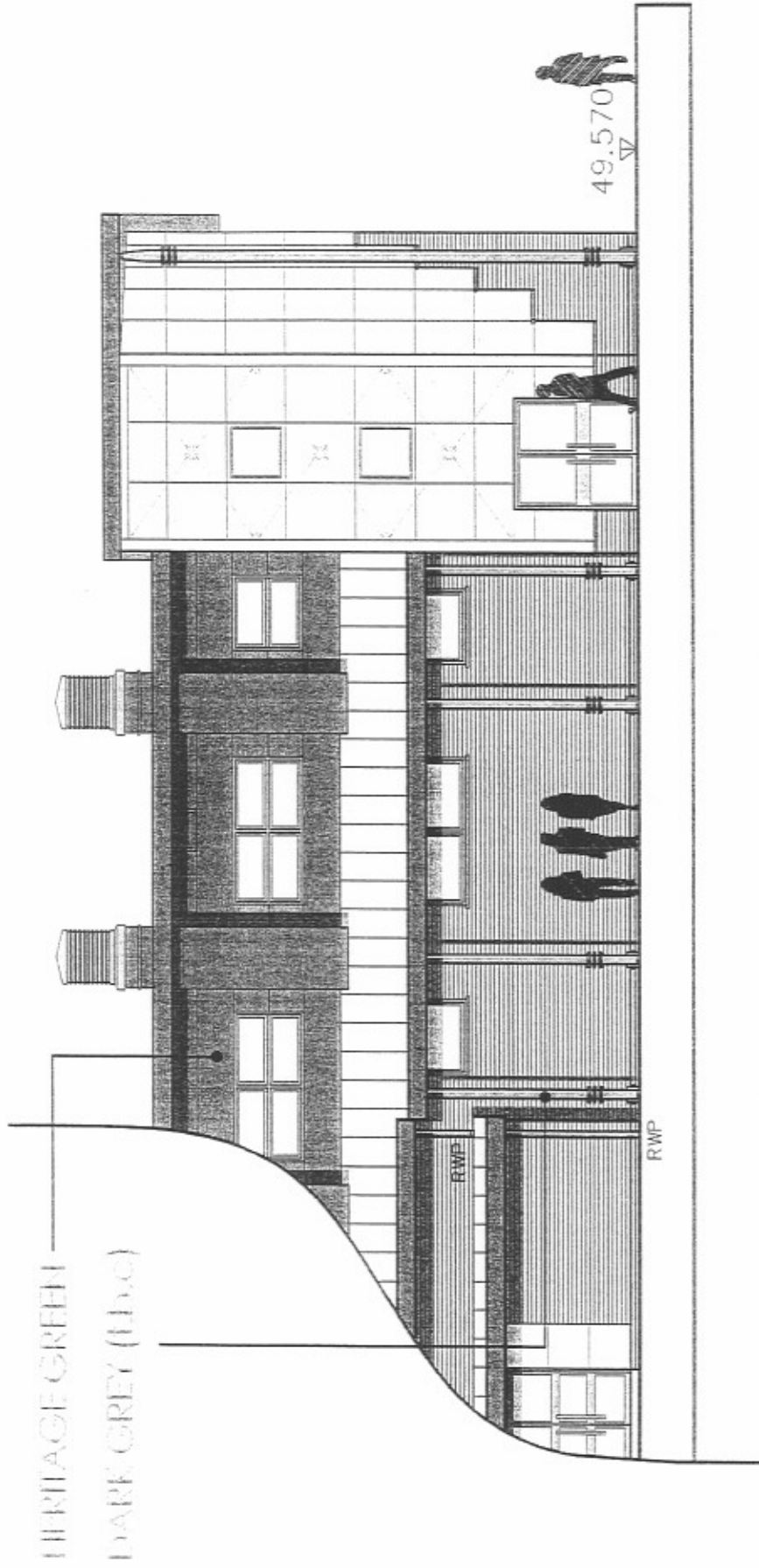
FUNDING

Long term deposit		319612	
Devolved Capital	2005/2006	110795	
Devolved Capital	2006/2007	89468	} Advised by accountancy
Devolved Capital	2007/2008	93344	
Expanding Popular Schools		400000	Anticipated
Specialist College Grant		150000	
Projected roll forward	2005/2006	222000	Confirmed with Jas Patel
Projected roll forward	2006/2007	101359	

1486578

Estimated cost of project 1486578 includes additional £5k
Available 1486578

shortfall 0



PROPOSED ELEVATION option one

File - Building

DESIGN STATEMENT HILLCREST SCHOOL AND COMMUNITY COLLEGE, NETHERTON, DUDLEY

Hillcrest School and Community College is situated off Simms Lane in Netherton, on a large campus split into several plateaus on a sloping site. The School is bounded by Simms Lane to the east, a mix of business, residential and open space on a higher plateau to the south, Saltwells Nature Reserve to the west and open space, residential and business property at a lower level to the north.

The site identified for development comprises a grassed bank with a height difference of approximately four metres between the main building and courtyard (at lower level) and Sports Hall (at higher level). The area is incapable of forming a sports pitch.

Hillcrest School is in a period of transformation with a strong Principal Teacher moving the school forward in a positive direction, supported by a dedicated Board of Governors. The school is oversubscribed in its small catchment area and is under pressure from the Local Education Authority (LEA) to increase pupil numbers. Together with this, the School has recently been awarded Specialist Status as an Arts School with focus on the Performing Arts. This has been the catalyst of development to improve school facilities using funding available.

The Schools current Music and Drama spaces are poor and Dance takes place in competition with sporting activities in existing halls. The new stand alone building is to comprise two Dance Studios, 2 Drama Studios, associated changing areas and toilets and a Music Suite. This will form the Schools International Performing Arts Academy.

Despite the Schools campus being fairly large, the immediate upper plateau area has limited opportunity for development and the site chosen is one of three potential areas for development identified.

The proposals are for a split level building utilising the natural slope in the ground. The Drama and Dance spaces will be accessed from the same level as the main building (and play ground) and be known as lower ground floor. The Music Suite will be at upper ground floor and be accessed from the same level as the Sports Hall. By addition of a passenger lift (and stair), the scheme has the benefit of giving access for all to the Sports Hall and outdoor sports pitches, which is difficult at present.

The layout of the internal spaces has been arranged to form natural separation between the individual rooms, given the specialist natures of the activities proposed within. These are all to DfES recommended standards. This layout also makes best use of the surrounding environment, with the north to south orientation allowing natural daylight in to most spaces (Drama require blackout facilities).

The position of the building will form a natural enclosure to the playground area courtyard. This area is currently used for parking as there is no form of vehicular to pedestrian separation barrier, leading to a potential health and safety issue. This proposal resolves this potential issue and gives ownership of the play ground back to the pupils. Hard and soft landscaping improvements to the courtyard are proposed as a future phase to transform the space from a "sea of tarmac", which will also provide an out-door performance/teaching space. A gate is proposed between the new building and the corner of the existing Gym, not only to facilitate emergency vehicle access, but to give community access and better security of the site.

The building will be stepped in form to follow the profile of the site, giving benefit to the internal spaces and specialist internal heights required. The form will not be over powering to the courtyard, or main building due to this. Mono pitch roofs are proposed to add to the stepped form of the building and are proposed to be constructed as metal standing seam with a natural finish. To complement this, coloured aluminium fascias and barge boards are proposed with bull nose features in areas.

Sustainability is important to both the School and the LEA and so various energy efficient measures have been proposed to avoid excessive construction, maintenance and/or running costs. The main feature of the design is the proposal for wind catchers to naturally ventilate spaces, which is particularly important for dance areas. Bris Soliel and over hanging eaves will support this principle to avoid the need for air conditioning.

The materials have been chosen to be sympathetic to the building setting, yet giving a modern contemporary appearance to enable future flexibility, with sensible maintenance. Brickwork to be similar to the existing school buildings will be used with a mixture of aluminium powder coated framed windows and cladding panels in areas.

The proposals do not compromise the LEA's Schools For The Future programme and follows its principles.

The building will be accessible for all and is intended to support the schools existing community use.

In conclusion, the building will be a focus for the schools Performing Arts to modern standards and fit for purpose.

Express and Star - 23 July 2003

Cash to meet demand for pupil places

Halesowen secondary schools are to get an extra 276 places to cope with growing pupil numbers over the next five years. A project to deal with the shortage of places at the town's four senior schools has been allocated £2.67 million.

The money has come from the Department for Education and Skills.

Consultation is taking place with the heads and governing bodies of Windsor, Earls High, Leasowes and Cradley schools.

Education officers will look at the existing school buildings before deciding where to recommend extension work should take place.

Director of education and lifelong learning John Freeman said steps to provide 164 extra places in the north of the borough had already been completed.

Consultation is also taking place with all secondary school heads, governing bodies and further education colleges in the borough over the future of 14 to 19-year-olds education.

Mr Freeman said it was hoped to bring forward proposals in the autumn.

"There is a problem with children in this age group becoming disengaged from society. The existing GCSE subjects are not engaging them and vocational courses may be better for some," he added.

Mr Freeman said talks were also taking place with the local learning and skills council over collaborating on providing such courses.



hillcrest school
and community college
proud of our success