

Statistical Analysis

OC2 Cohort

2006

Contents

	Page No.
Introduction	03
Source	03
Section 1 – Children Looked After Who Had Been Looked After For At Least 12 Months	05
Numbers of Looked After Children In Dudley	06
Looked After Children by Placement and Gender	06
Looked After Children by Placement	07
Section 2 – Educational Attainment	09
Education Children Eligible To Receive Full-Time Schooling	10
Key Stage 1 Results – Teacher Assessments	15
Key Stage 2 Results – SATS	18
Key Stage 3 Results – SATS	20
Key Stage 4 Results - GCSE's And GNVQ's	23
Section 3 - Offending	26
Looked After Children Who Offended	27
Section 4 - Health	32
Under 5's Development Checks	32
Immunisations	34
Dental Checks	36
Health Assessments	39
Section 5 – School Leavers	43
Position at age 16 or over	44
Section 6 – Performance Indicators	47
PAF C81 Final Warnings /Reprimands And Convictions Of Children Looked After	48
PAF C19 Health Of Children Looked After	49
PAF C24 Children Looked After Absent From School	50
APA: E&A(LAC)3 Children Looked After who sat at least one GCSE equivalent exam.	51
Summary of main findings	53

Introduction

Information in this report relates to data collected for the OC2 statistical return for those children who were looked after on 30th September in 2002, 2003, 2004, 2005 and 2006 respectively.

The statistics divisions of the Department of Health and the Department for Education and Skills, have published aggregated data, collated from the OC2 statistical returns from local authorities for England. This information has been used as a comparator for Dudley's performance.

Also included is additional data collected and collated internally from Dudley Children's Services for the purpose of analysis.

Please note that all figures presented in this report exclude children looked after under an agreed series of short term placements under Section 20 of the Children Act 1989 (in accordance with the department of education and skills data collection requirements).

Source

- Directorate of Children's Services - Children's Social Care - OC2 Statutory Return 2006
- Swift
- DfES National Statistics
- Directorate of Children's Services - Education Information Team

Intentionally left blank

SECTION 1

Children Looked After Who Had Been
Looked After For At Least 12 Months

Numbers Of Looked After Children In Dudley

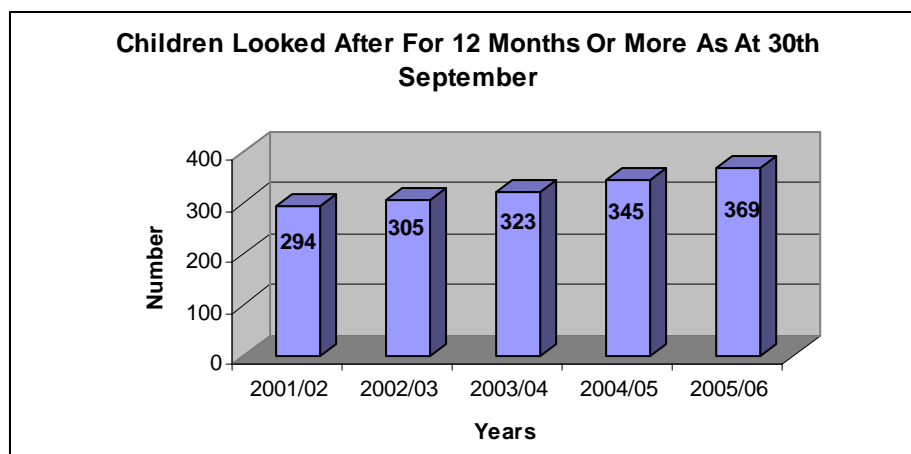


Chart 1

As can be seen in Chart 1 above, there is an upward trend in the number of children being looked after in Dudley. This picture is also reflected nationally. However, comparison data is not yet available for 2006.

Looked After Children By Placement And Gender

Placement	Male	Female	Total
A1 - Placed For Adoption (Not with Former Foster Carers)	4	7	11
A4 - Placed For Adoption With Consent (Under Section 19 of the 2002 Act) Not With Current Foster Carer	1		1
A6 - Placed For Adoption With Placement Order (Under Section 21 of the 2002 Act) Not With Current Foster Carer		2	2
F1 - Foster Placement With Relative or Friend Within LA	24	19	43
F2 - Placement With Other Foster Carer Provided By LA	56	55	111
F3 - Placement With Other Foster Carer Arranged Through Agency	2	2	4
F4 - Foster Placement With Relative or Friend Outside LA	9	7	16
F5 - Placement With Other Foster Carer Outside LA Provided By LA	31	21	52
F6 - Placement With Other Foster Carer Outside LA Arranged Through Agency	19	13	32
H2 - Secure Unit Outside LA Boundary	2	1	3
H3 - Homes and Hostels Inside LA Boundary	11	2	13
H4 - Homes and Hostels Outside LA Boundary	10	4	14
H5 - Residential Accommodation Not Subject For Childrens Homes Regulations	2		2
M3 - Whereabouts Unknown	1		1
P1 - Placed With Own Parents or Other Person With Parental Responsibility	31	19	50
P2 - Independent living, e.g. in flat, lodgings, bedsit, Band B or with friends, with or without formal support	3	1	4
R1 - Residential Care Home	2		2
S1 - All Residential Schools, Except Where Dual Registered as a School and a Childrens Home	7	1	8
Grand Total	215	154	369

Table 1

Looked After Children By Placement

Placement	Total	Percentage
Fostering	258	69.9
Homes and Hostels	30	8.1
Independent Living	4	1.1
Other	16	4.3
Placed For Adoption	11	3.0
Placed With Own Parents or Other Person With Parental Responsibility	50	13.6
Total	369	100.0

Table 2

Tables 1 and 2 above, show the numbers and percentage of children as at 30th September 2006 placed by gender and accommodation type. 58.2% of these children were boys.

The majority of children, 69.9%, are placed in foster care, showing an increase from last year (66.3% in 2005), whilst a further 13.6% were placed at home (14.2% were placed at home in 2005).

Intentionally left blank

SECTION 2

Education

Children Eligible To Receive Full-Time Schooling

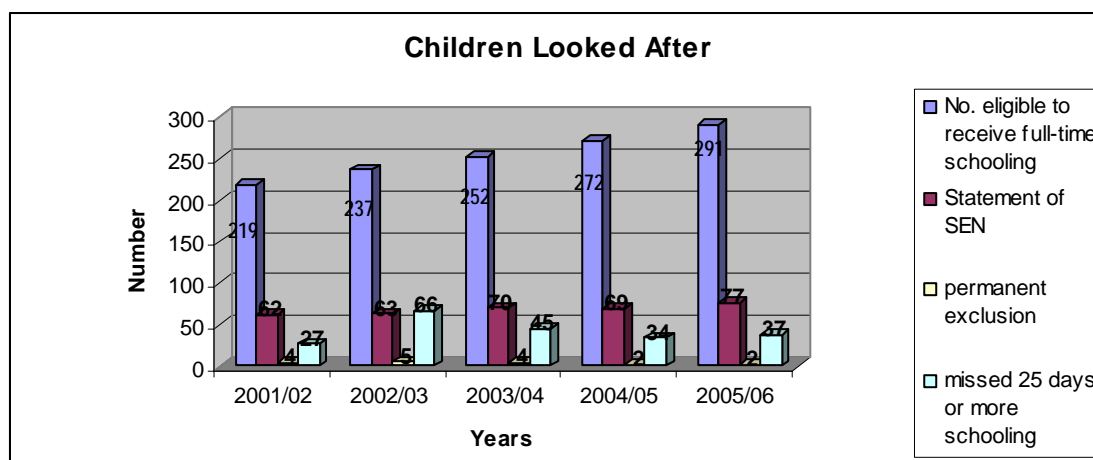


Chart 2

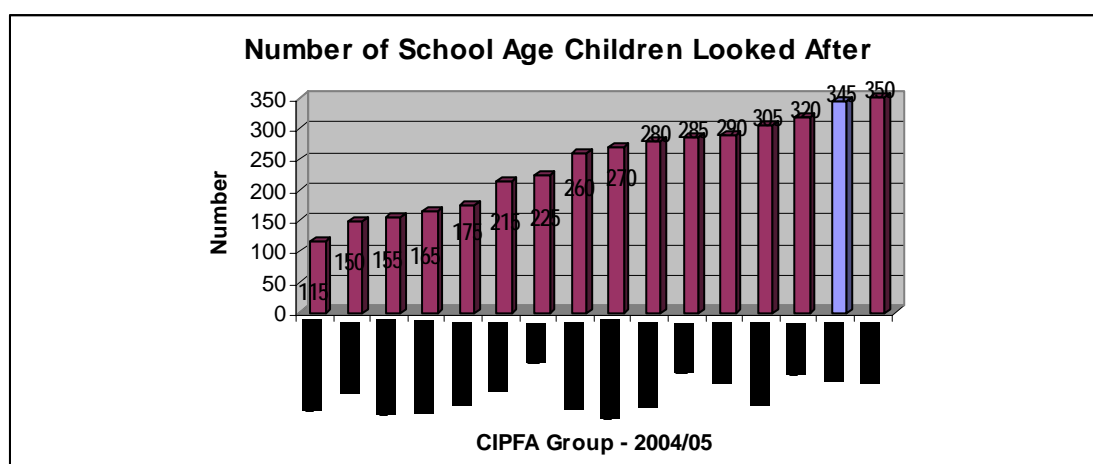


Chart 3

%	Dudley 2001/02	England 2001/02	Dudley 2002/03	England 2002/03	Dudley 2003/04	England 2003/04	Dudley 2004/05	England 2004/05	Dudley 2005/06
Statement of SEN	28.3	26.8	26.6	26.8	27.8	27.4	25.4	27.3	26.5
permanent exclusion	1.8	1.2	2.1	1.1	1.6	0.9	0.7	0.9	0.7
missed 25 days or more schooling	12.3	12.0	27.8	12.4	17.9	12.3	12.5	12.6	12.7

Table 3

The number of children eligible for school has increased over the past 5 years. Chart 2 shows numbers within the Chartered Institute for Public Finance and Accountancy Group (CIPFA). Dudley has the second highest number of looked after children within the group.

The numbers of children missing 25 days or more schooling in 2005/06 has remained fairly static for the past 2 years as can be seen in chart 2 above. Over the past few years Dudley's absences have been relatively higher than

the picture nationally. (See Table 2 above). However, in 2004/05 Dudley was slightly lower than the national average for the first time. Comparison data is not yet available for 2005/06.

Compared to the England average data in 2004/05, Dudley has had slightly lower levels of children with statements of educational needs. (See Table 3 above).

The proportion of children who were permanently excluded from school in Dudley in 2005/06 has fallen slightly compared to the previous 2 years.

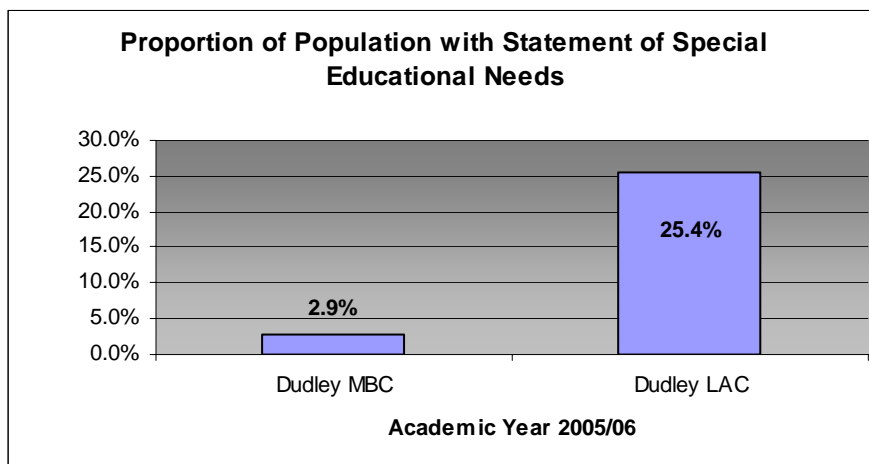


Chart 4

Chart 4 above shows the percentage of looked after children with SEN during the academic year 2005/06 compared to the percentage of children attending Dudley schools with SEN in the same period.

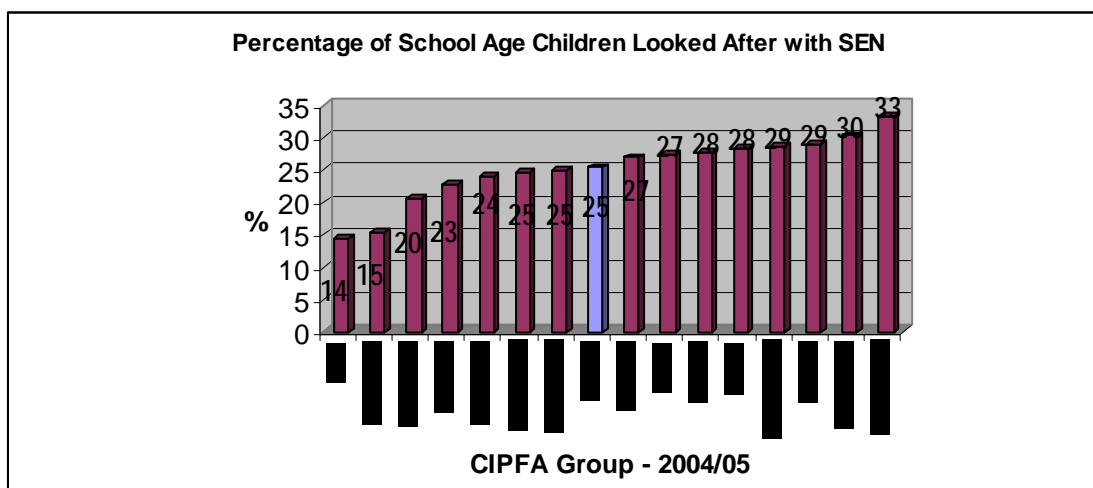


Chart 5

Dudley sits within the middle of its CIPFA group (2004/05) for the percentage of looked after children with SEN (Refer to Chart 5 above).

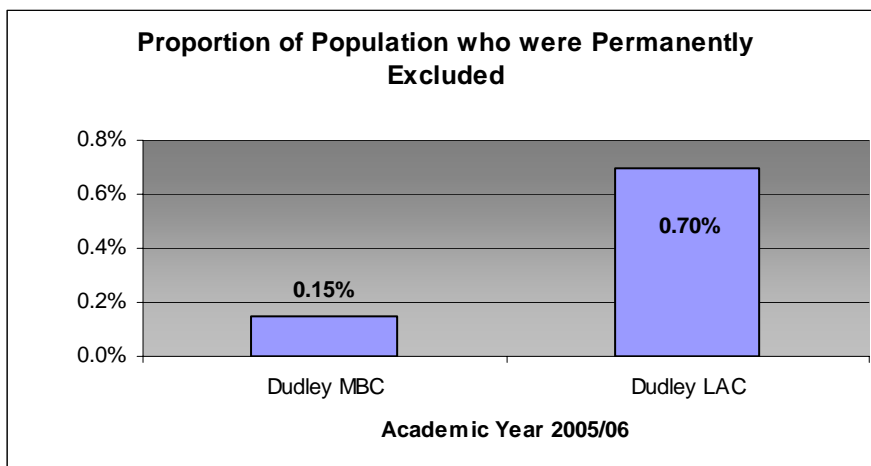


Chart 6

Chart 6 above shows the percentage of looked after children who were permanently excluded during the academic year 2005/06 compared to the percentage of children attending Dudley schools who were permanently excluded in the same period.

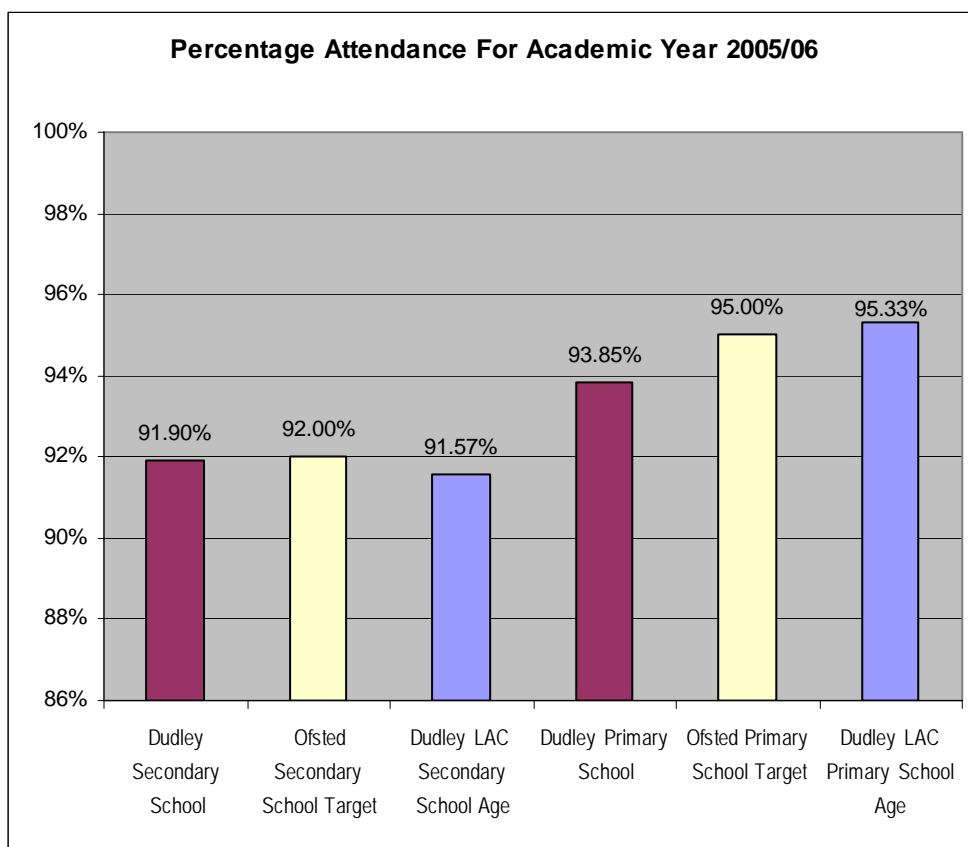


Chart 7

Dudley LAC (Secondary School age) had a slightly lower percentage of attendance than Dudley children as a whole. Dudley LAC (Primary School Age) however, had higher levels of attendance than their Dudley Peers with

1.48% higher than the Dudley average. Primary School Attendance for Dudley LAC exceeded the Ofsted Primary School Target.

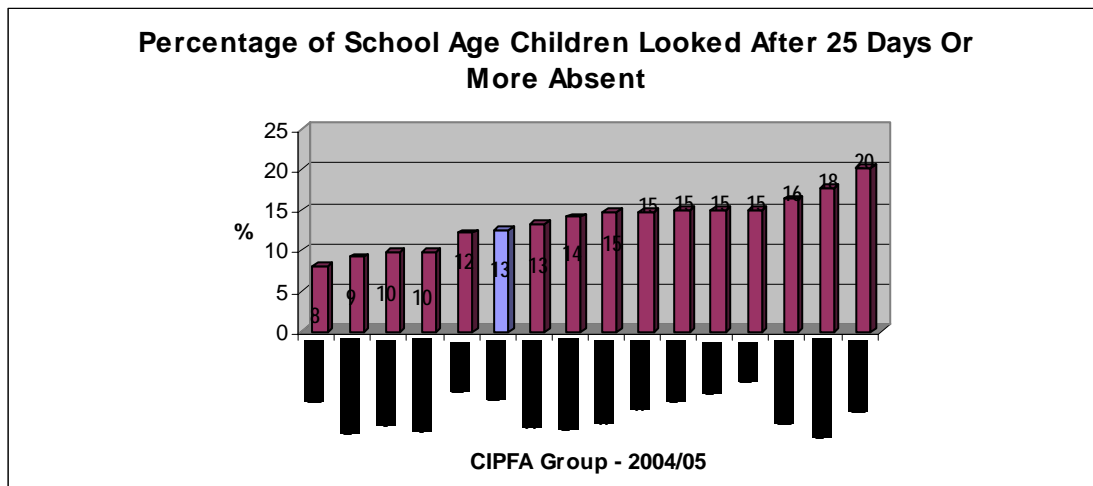


Chart 8

As is evident in chart 8 above, during 2004/05 Dudley was in the upper half of the CIPFA group showing comparably good performance.

Section 2

	Full Care Order		Full Care Order Total	Voluntary Agreement (under sec 20)		Voluntary Agreement (under sec 20) Total	Interim Care Order		Interim Care Order Total	Freeing Order Granted	Freeing Order Granted Total	On Remand or Committed for Trial or sentence	On Remand or Committed for Trial or sentence Total	Absent 25 days or more Grand Total	Grand Total	% Absent 25 days +
	Absent Less than 25 Days	Absent 25 Days+		Absent Less than 25 Days	Absent 25 Days+		Absent Less than 25 Days	Absent 25 Days+		Absent Less than 25 Days		Absent Less than 25 Days				
Placement Of School Age Children																
A1 - Placed For Adoption (Not with Former Foster Carers)										2	2			0	2	0.0
A6 - Placed For Adoption With Placement Order (Under Section 21 of the 2002 Act) Not With Current Foster Carer										1	1			0	1	0.0
F1 - Foster Placement With Relative or Friend Within LA	22	4	26	8		8								4	34	11.8
F2 - Placement With Other Foster Carer Provided By LA	64	3	67	3	2	5	13		13	4	4			5	89	5.6
F3 - Placement With Other Foster Carer Arranged Through Agency							1		1					0	1	0.0
F4 - Foster Placement With Relative or Friend Outside LA	8	2	10	1		1								2	11	18.2
F5 - Placement With Other Foster Carer Outside LA Provided By LA	37	1	38	3		3	7		7	1	1			1	49	2.0
F6 - Placement With Other Foster Carer Outside LA Arranged Through Agency	26		26				1	1	2	2	2			1	30	3.3
H2 - Secure Unit Outside LA Boundary	3		3											0	3	0.0
H3 - Homes and Hostels Inside LA Boundary	2	3	5	1	2	3	1		1			1	1	5	10	50.0
H4 - Homes and Hostels Outside LA Boundary	8	4	12		1	1								5	13	38.5
H5 - Residential Accommodation Not Subject For Childrens Homes Regulations		1	1		1	1								2	2	100.0
M3 - Whereabouts Unknown	1		1											0	1	0.0
P1 - Placed With Own Parents or Other Person With Parental Responsibility	24	12	36											12	36	33.3
P2 - Independent living, e.g. in flat, lodgings, bedsit, Band B or with friends, with or without formal support	1		1											0	1	0.0
R1 - Residential Care Home	1		1				1		1					0	2	0.0
S1 - All Residential Schools, Except Where Dual Registered as a School and a Childrens Home	1		1	5		5								0	6	0.0
Grand Total	198	30	228	21	6	27	24	1	25	10	10	1	1	37	291	12.7

Table4

Age	Absent less than 25 days						Absent less than 25 days Total	Absent 25 days+				Absent 25 days+ Total	Grand Total	% Absent 25 days+
	Fostering	Homes and Hostels	Independent Living	Other	Placed For Adoption	Placed With Own Parents or Other Person With Parental Responsibility		Fostering	Homes and Hostels	Other	Placed With Own Parents or Other Person With Parental Responsibility			
5	14			1	1	4	20				1	1	21	4.8
6	12				1		13						13	0.0
7	16			1		4	21				1	1	22	4.5
8	19					4	23				1	1	24	4.2
9	12	1				3	16						16	0.0
10	20					3	23	1				1	24	4.2
11	16	2					18		1		1	2	20	10.0
12	24	2					26	1	1	1	1	4	30	13.3
13	21	1		3		2	27	3	3		2	8	35	22.9
14	15	3		3		2	23	4	1		1	6	29	20.7
15	19	4		1		1	25	2	2	1		5	30	16.7
16	13	3	1	1		1	19	2	2		4	8	27	29.6
Grand Total	201	16	1	10	2	24	254	13	10	2	12	37	291	12.7

Table 5

As can be seen in table 4 (see previous page), children who missed 25 days or more schooling were predominately placed with Foster Carers or with their parents.

Absenteeism as a proportion of each age & placement group can be seen in table 5 above. The highest proportion of absenteeism, by placement type, was those children in homes and hostels (38.5%). The highest levels of absenteeism by age group were among the 12 to 16 year olds accounting for 83.8% of all absences.

Key Stage 1 Results – Teacher Assessments

Dudley	2001/02	2002/03	2003/04	2004/05	2005/06
No. eligible for Key Stage 1 teacher assessment	17	17	13	19	21
No. received a teacher assessment	8	3	4	18	14
No. who achieved level 2 Writing	12	7	3	9	5
No. who achieved level 2 Reading	N/A	N/A	N/A	8	6
No. who achieved level 2 Mathematics	7	8	6	11	8

Table 6

As can be seen in table 6 above, the number of children in the key stage 1 cohort has risen in 2006 for the third consecutive year.

CIFPA group comparisons are not available for key stage 1. However, below (Chart 9) shows the proportion of looked after children who achieved key stage 1 results in the academic year 2005/06 compared to the proportion of children attending Dudley schools who achieved key stage 1 results during the same period. It is evident that Dudley's looked after children achieve less than the borough as a whole.

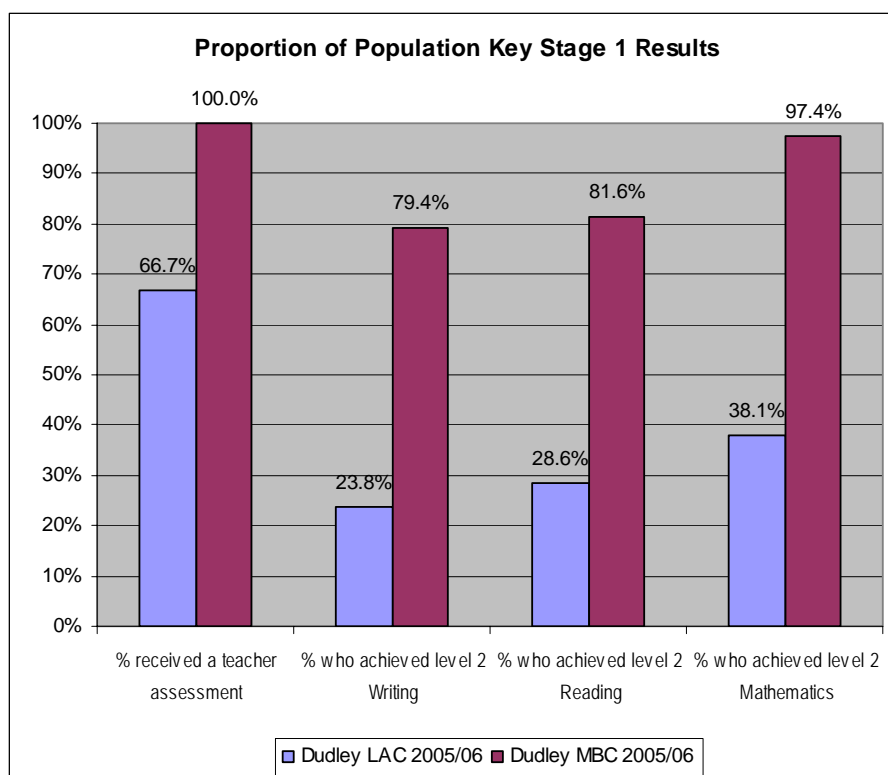


Chart 9

%	Dudley 2001/02	England 2001/02	Dudley 2002/03	England 2002/03	Dudley 2003/04	England 2003/04	Dudley 2004/05	England 2004/05	Dudley 2005/06
% who achieved level 2 Writing	70.6	52.4	41.2	48.5	23.1	48.3	47.4	51.8	23.8
% who achieved level 2 Reading	47.1	46.2	52.9	50.8	30.8	54.4	42.1	57.2	28.6
% who achieved level 2 Mathematics	41.2	57.9	47.1	61.0	46.2	63.5	57.9	64.4	38.1

Table 7

The proportion of children who achieved level 2 in writing, reading and mathematics was considerably lower in 2005/6 than in the previous year (refer to tables 6&7 above). Please note, that achievements from 2004/05 onwards are measured through Teacher Assessments as opposed to tests and tasks as in previous years.

The numbers of children within the key stage 2 cohort have decreased for the third consecutive year. The percentage attaining level 4 in English and Science has increased for the third year running, however, the percentage of looked after children attaining level 4 in Maths has fallen. (Refer to tables 8&9 below). National comparison data has not yet been published for 2005/06.

Dudley	2001/02	2002/03	2003/04	2004/05	2005/06
No. eligible for Key Stage 2 tasks and tests and graded	22	23	32	24	19
No. who sat all tasks & tests	16	12	15	17	13
No. attained at least level 4 in English Test	9	6	10	10	9
No. attained at least level 4 in Mathematics Test	7	6	9	9	7
No. attained at least level 4 in Science Test	11	9	12	12	12

Table 8

%	Dudley 2001/02	England 2001/02	Dudley 2002/03	England 2002/03	Dudley 2003/04	England 2003/04	Dudley 2004/05	England 2004/05	Dudley 2005/06
% attained at least level 4 in English Test	40.9	34.6	26.1	37.1	31.3	39.9	41.7	42.1	47.4
% attained at least level 4 in Mathematics Test	31.8	34.2	26.1	34.8	28.1	37.2	37.5	37.6	36.8
% attained at least level 4 in Science Test	50.0	51.7	39.1	52.9	37.5	53.0	50.0	53.4	63.2

Table 9

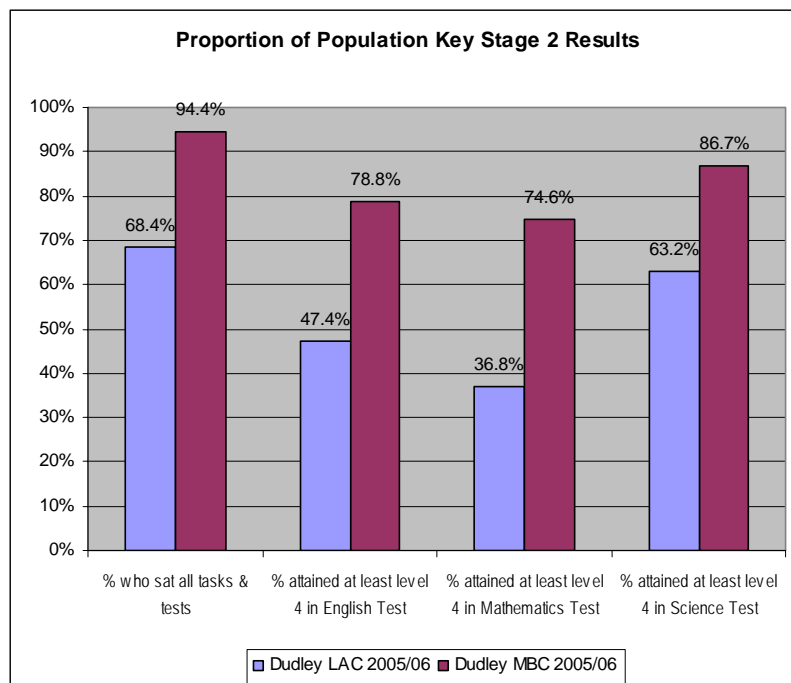


Chart 10

Chart 10 left shows the proportion of looked after children who achieved key stage 2 results in the academic year 2005/06 compared to the proportion of children attending Dudley schools who achieved key stage 2 results during the same period. It is evident as with the key stage 1 results that Dudley's

looked after children achieve less than the borough as a whole.

The following charts (Charts 11,12 and 13) Show CIPFA group comparisons for the academic year 2004/05. Data is not available for a number of these authorities therefore it is difficult to assess Dudley's position within the group.

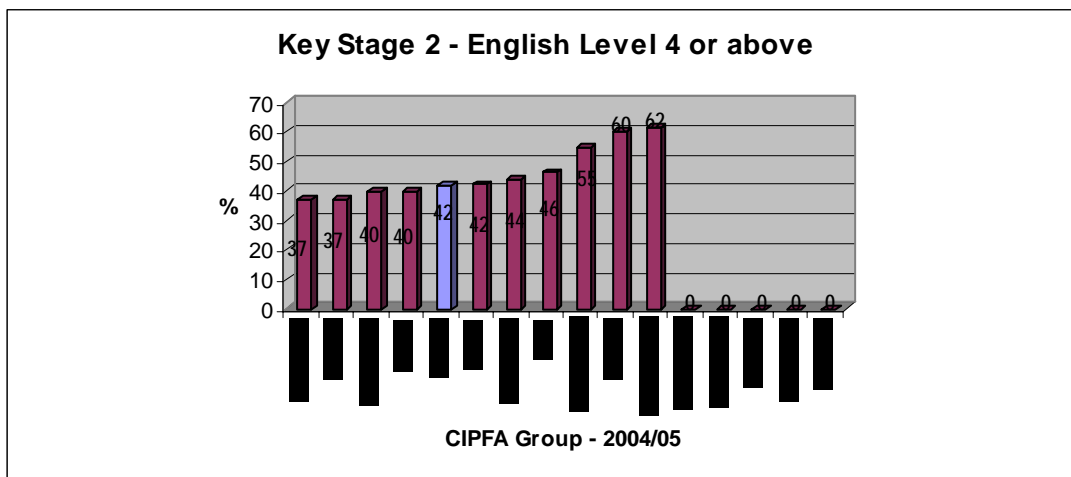


Chart 11

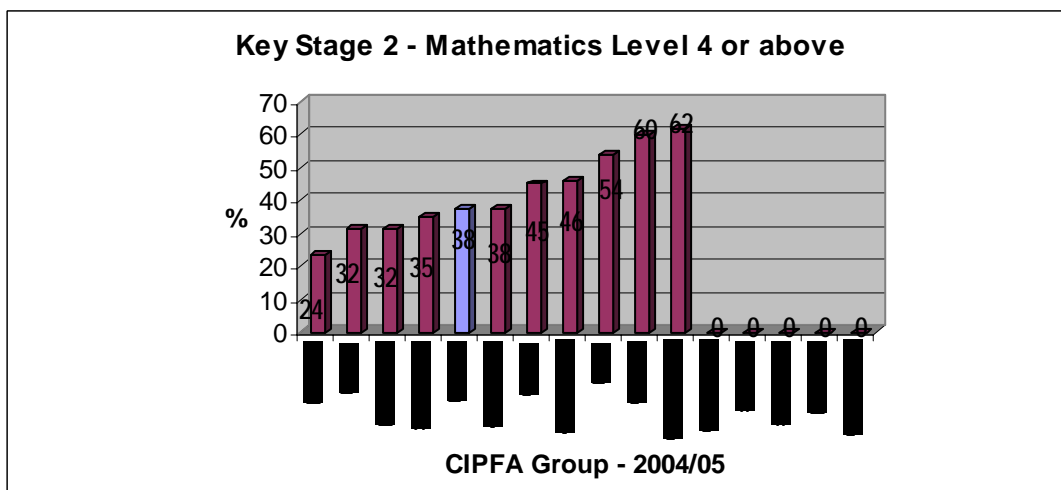


Chart 12

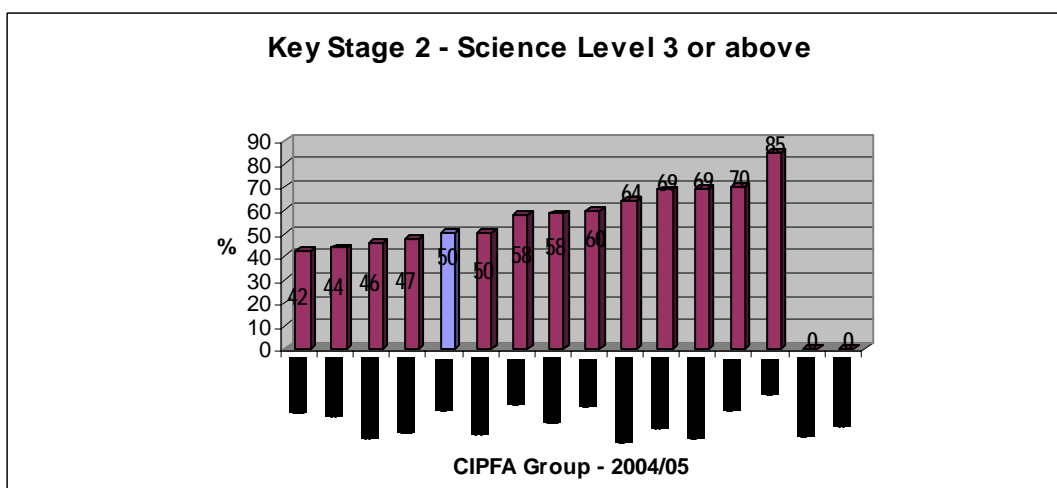


Chart 13

Key Stage 3 - SATS

There has been a slight increase in the cohort size of Key Stage 3 from 28 in 2004/05 to 29 in 2005/06. The proportion that sat all tasks and tests in 2005/06 (37.9%) was significantly lower than in 2004/05 (53.6%) (See table 10 below for actual numbers).

Dudley	2001/02	2002/03	2003/04	2004/05	2005/06
No. eligible for Key Stage 3 tasks and tests and graded	13	30	20	28	29
No. who sat all tasks & tests	8	13	8	15	11
No. attained at least level 5 in English Test	4	5	3	9	9
No. attained at least level 5 in Mathematics Test	2	6	3	9	6
No. attained at least level 5 in Science Test	2	7	3	6	12

Table 10

%	Dudley 2001/02	England 2001/02	Dudley 2002/03	England 2002/03	Dudley 2003/04	England 2003/04	Dudley 2004/05	England 2004/05	Dudley 2005/06
% attained at least level 5 in English Test	30.8	22.1	16.7	22.3	15.0	22.5	32.1	26.7	31.0
% attained at least level 5 in Mathematics Test	15.4	21.4	20.0	23.3	15.0	25.8	32.1	28.3	20.7
% attained at least level 5 in Science Test	15.4	21.8	23.3	23.2	15.0	20.8	21.4	25.9	41.4

Table 11

The proportion of children attaining level 5 in Science has increased from 2004/05, however, the proportions in English and Maths have fallen.

Performance in Dudley was above the national average in 2004/05 for both English and Maths, however Science fell below the national average (refer to tables 10 & 11).

Note: National comparison data has not yet been published for 2005/06.

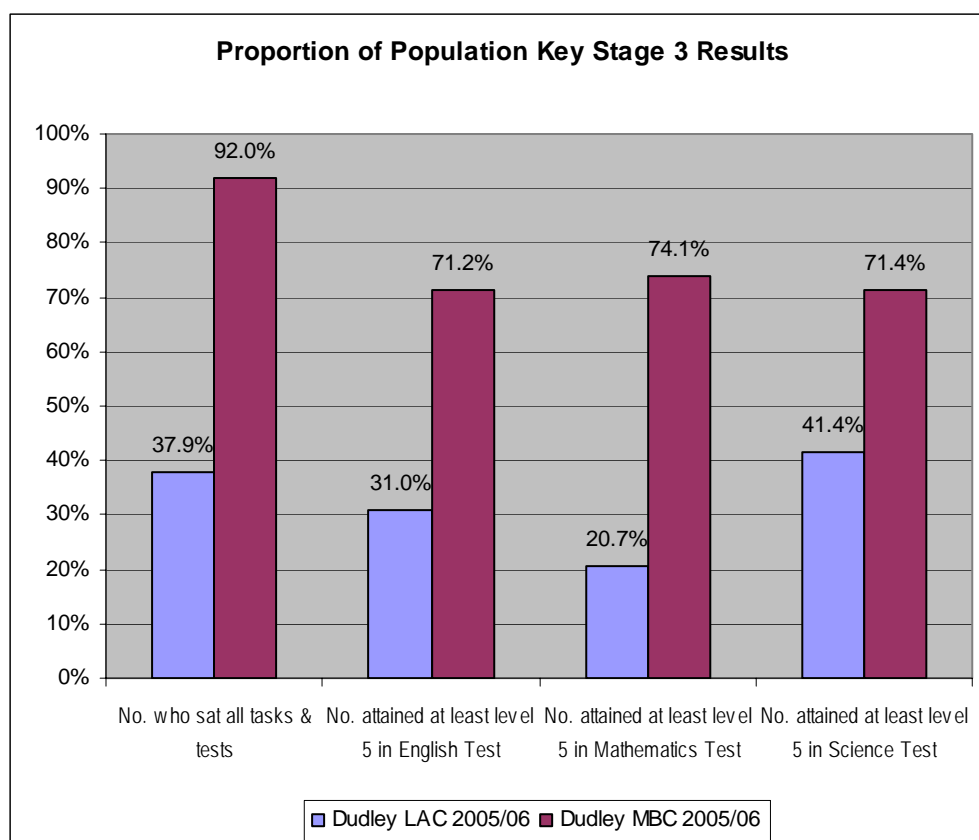


Chart 14

Chart 14 above, shows the proportion of looked after children who achieved key stage 3 results in the academic year 2005/06 compared to the proportion of children attending Dudley schools who achieved key stage 3 results during the same period. It is evident as with the key stage 1 and 2 results that Dudley's looked after children levels of achievement are less than the borough as a whole.

The following charts (Charts 15,16 and 17) show CIPFA group comparisons for the academic year 2004/05. Data is not available for a number of these authorities therefore it is difficult to assess Dudley's position within the group.

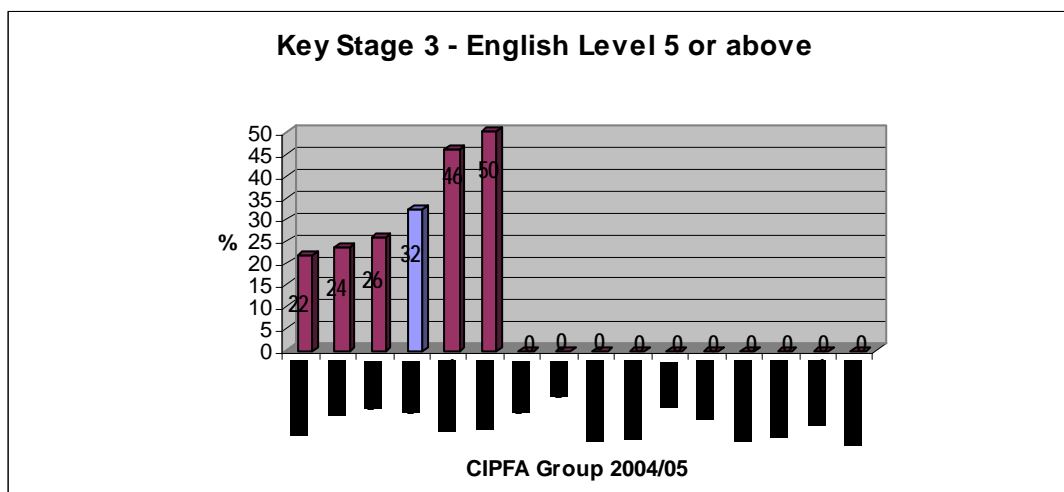


Chart 15

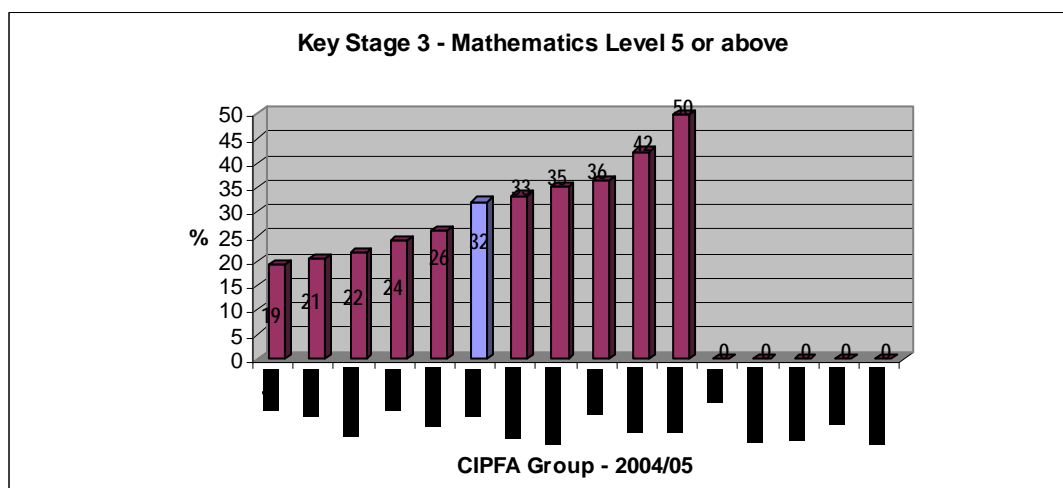


Chart 16

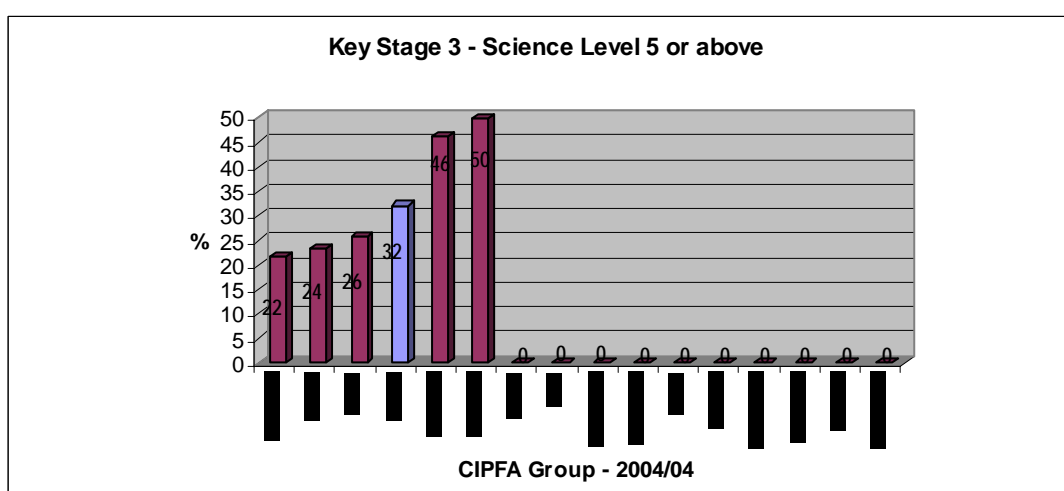


Chart 17

Key Stage 4 Results - GCSE's and GNVQ's

Dudley	2001/02	2002/03	2003/04	2004/05	2005/06
No. eligible for GCSE (or equivalent) examinations	20	24	15	32	27
No. who sat at least 1 of these exams	12	14	8	17	14
No. who obtained at least 1 GCSE (or equivalent) at grade A* to G	12	14	8	17	14
No. who obtained at least 5 GCSE (or equivalent) at grade A* to G	10	10	7	14	9
No. who obtained at least 5 GCSE (or equivalent) at grade A* to C	0	3	0	2	2

Table 12

The key stage 4 cohort has decreased. There has been a slight increase in the percentage that obtained at least 5 GCSE's at grade A*-C, however, the actual number has stayed the same.

%	Dudley 2001/02	England 2001/02	Dudley 2002/03	England 2002/03	Dudley 2003/04	England 2003/04	Dudley 2004/05	England 2004/05	Dudley 2005/06
% who sat at least one GCSE or GNVQ	60.0	57.9	58.3	56.8	53.3	59.1	53.1	64.0	51.9
% who obtained at least 1 GCSE (or equivalent) at grade A* to G	60.0	53.2	58.3	52.9	53.3	56.1	53.1	60.2	51.9
% who obtained at least 5 GCSE (or equivalent) at grade A* to G	50.0	36.3	41.7	36.8	46.7	39.4	43.8	40.7	33.3
% who obtained at least 5 GCSE (or equivalent) at grade A* to C	0.0	7.5	0.0	8.7	0.0	9.4	6.3	10.8	7.4

Table 13

Results for 2005/06 in Dudley varied compared to 2004/05 as can be seen above in table 13 and charts 18 & 19 below. The most significant change being the fall in the percentage of children obtaining at least 5 GCSE's at grade A* to G.

Note: National comparison data has not yet been published for 2005/06.

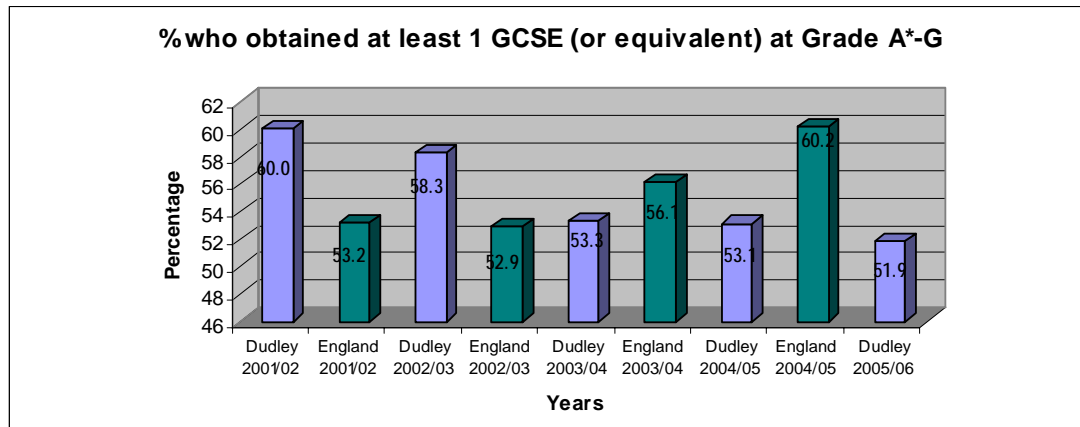


Chart 18

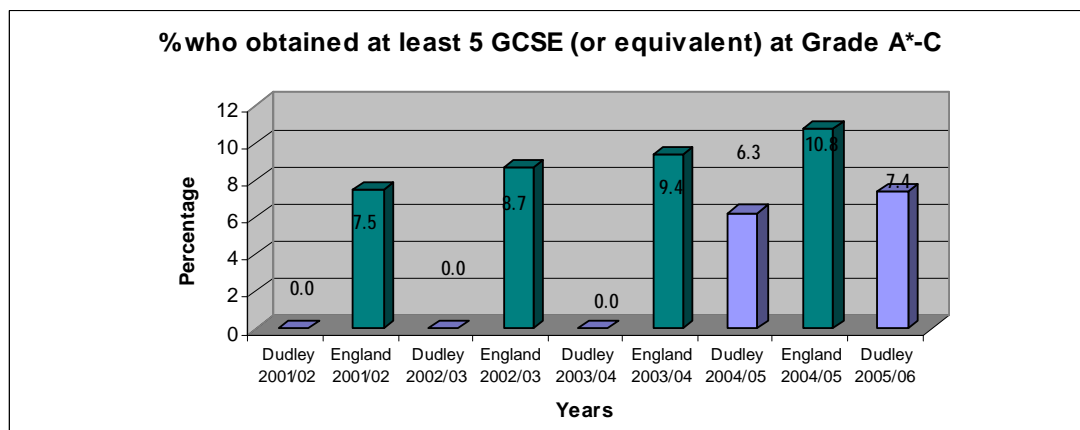


Chart 19

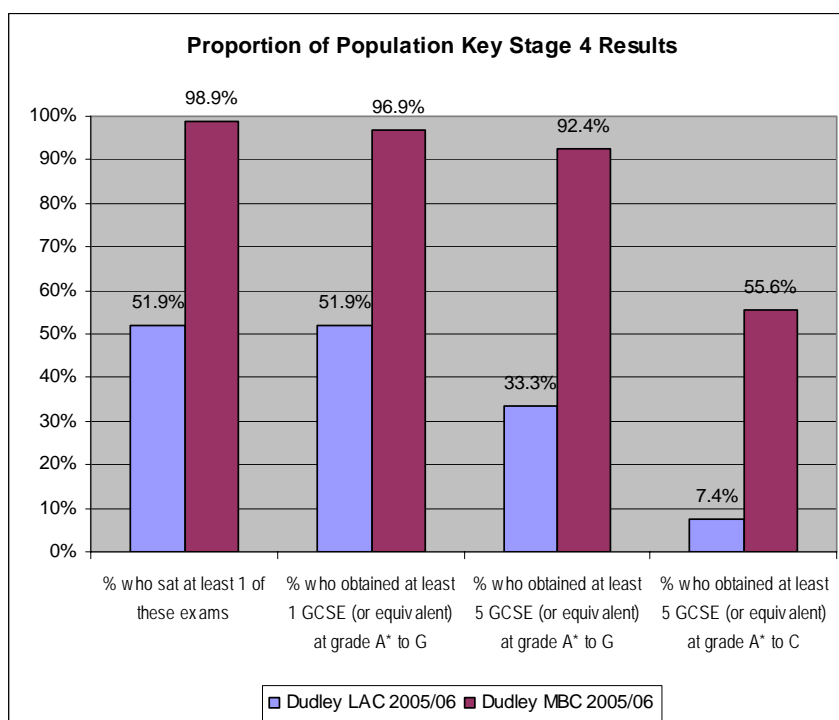


Chart 20

Chart 20 right, shows the proportion of looked after children who achieved key stage 4 results in the academic year 2005/06 compared to the proportion of children attending Dudley schools who achieved key stage 4 results during

the same period. It is evident, as with the key stage results that Dudley's

looked after children levels of achievement are less than the borough as a whole.

Charts 21 to 23 show CIPFA comparator groups for 2004/05. Dudley appears to be doing comparatively better with the percentage of LAC with 5 GCSE's at grade A* to G* but fared less well with the percentage of LAC who sat one GCSE and the percentage with 1 GCSE at grade A* to G.

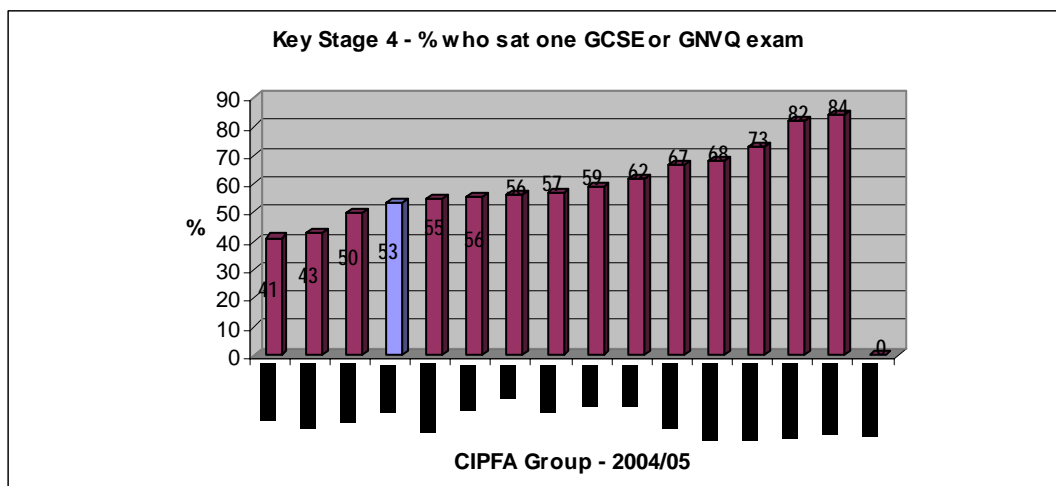


Chart 21

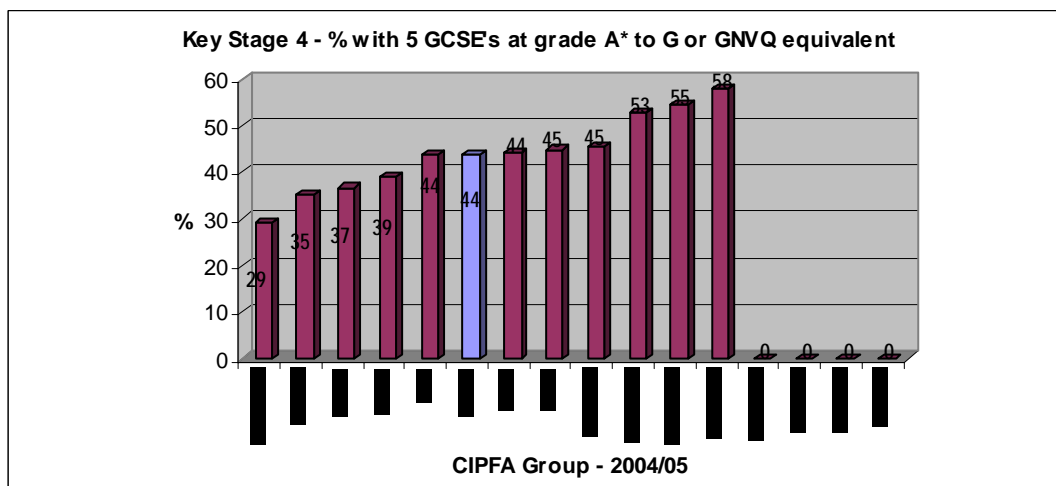


Chart 22

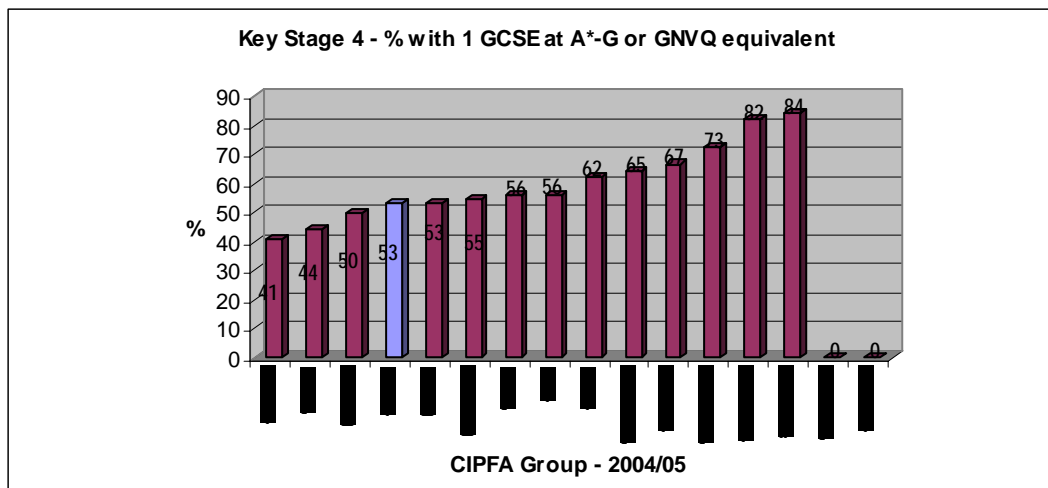


Chart 23

SECTION 3

Offending

Looked After Children Who Offended

Dudley	2001/02	2002/03	2003/04	2004/05	2005/06
No. aged 10 + at 30 September and looked after for at least twelve months	162	172	189	205	226
warning or reprimand during the year, for an offence committed whilst being looked after	17	15	16	18	18

Table 14

As can be seen in Chart 24 below, the percentage of children looked after aged 10 plus who have offended has decreased over the previous 5 years, however, in 2005 there has been a slight increase in offences but the downward trend has continued in 2005/06 (see table 14 above).

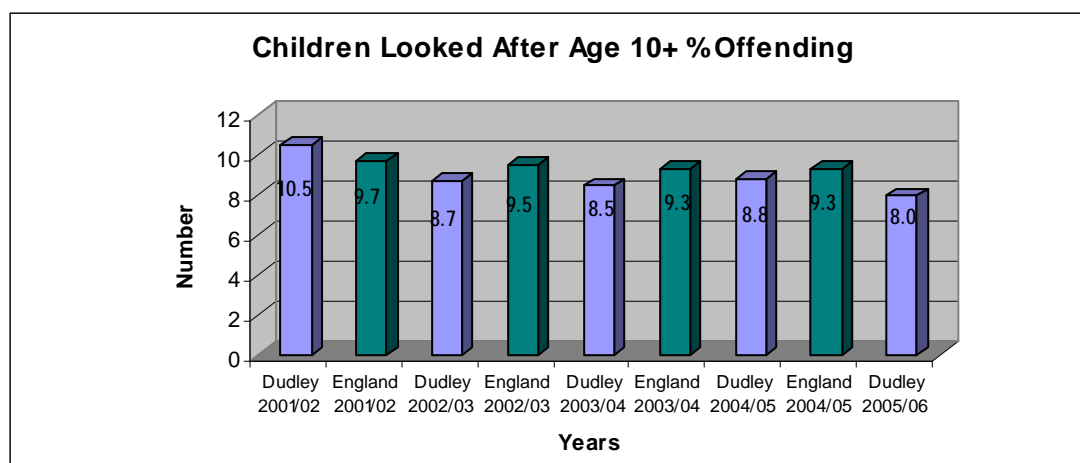


Chart 24

In 2004/05, the percentage of children offending in Dudley was below the national average. Information is not yet available nationally for comparison data for 2005/06.

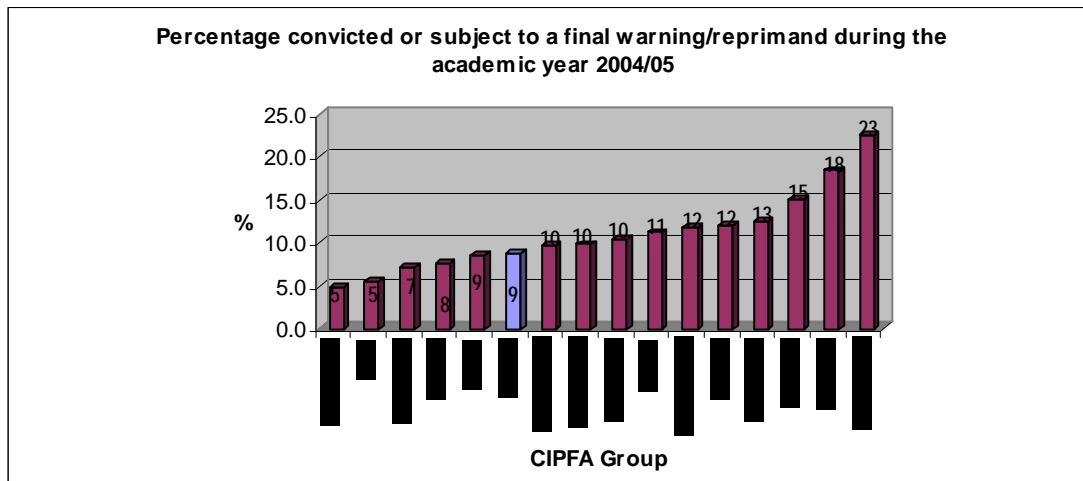


Chart 25

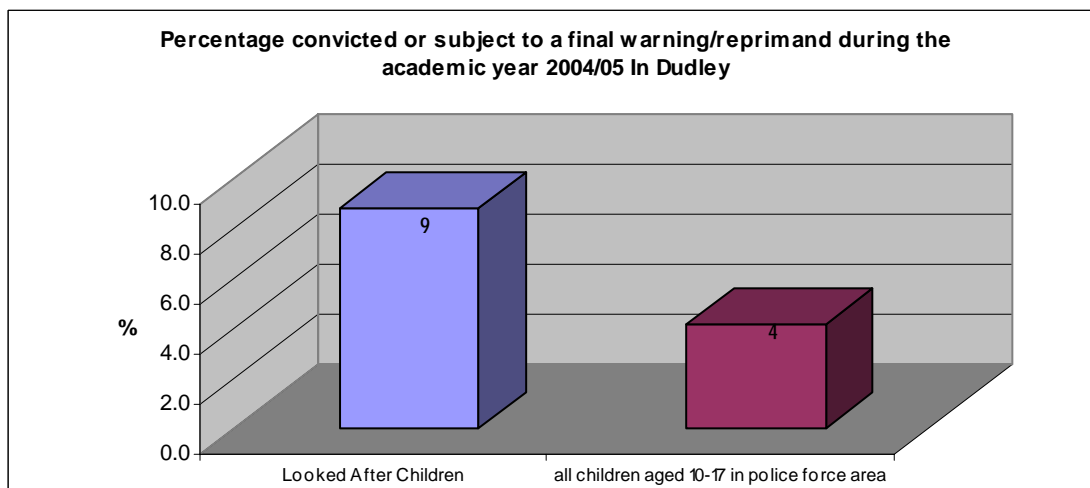


Chart 26

Dudley was in the top half within the CIPFA group, for offences in 2004/05 as illustrated in Chart 25 above. Results for 2006 have altered slightly but still show good performance.

Placement Group	Number of Non Offenders	Number of Offenders	Total	%
Fostering	152	5	157	3.3%
Homes and Hostels	22	7	29	31.8%
Independent Living	2	2	4	100.0%
Other	10	2	12	20.0%
Placed With Own Parents or Other Person With Parental Responsibility	22	2	24	9.1%
Grand Total	208	18	226	8.7%

Table 15

Table 15 above shows the percentage of offenders by the type of placement they were accommodated under on 30th September 2006. A more detailed analysis can be seen overleaf (refer to table 16).

Placement	Non Offenders					Non Offenders Total	Offenders			Offenders Total	Grand Total
	Freeing Order Granted	Full Care Order	Interim Care Order	Other	Voluntary Agreement (under sec 20)		Full Care Order	Interim Care Order	Voluntary Agreement (under sec 20)		
F1 - Foster Placement With Relative or Friend Within LA		14			6	20					20
F2 - Placement With Other Foster Carer Provided By LA	2	52	7		7	68	2	1	1	4	72
F4 - Foster Placement With Relative or Friend Outside LA		7			1	8					8
F5 - Placement With Other Foster Carer Outside LA Provided By LA		31	4		4	39					39
F6 - Placement With Other Foster Carer Outside LA Arranged Through Agency		16	1			17	1			1	18
H2 - Secure Unit Outside LA Boundary		1				1	2			2	3
H3 - Homes and Hostels Inside LA Boundary		5	1	1	2	9	3		1	4	13
H4 - Homes and Hostels Outside LA Boundary		11			1	12	1			1	13
H5 - Residential Accommodation Not Subject For Childrens Homes Regulations							1		1	2	2
M3 - Whereabouts Unknown		1				1					1
P1 - Placed With Own Parents or Other Person With Parental Responsibility		22				22	2			2	24
P2 - Independent living, e.g. in flat, lodgings, bedsit, Band B or with friends, with or without formal support		2				2	2			2	4
R1 - Residential Care Home		1				1					1
S1 - All Residential Schools, Except Where Dual Registered as a School and a Childrens Home		1			7	8					8
Grand Total	2	164	13	1	28	208	14	1	3	18	226

Table 16

38.8% of all offenders were accommodated in Homes and Hostels and another 27.8% placed with foster carers. 77.8% of all offenders were on Full Care Orders (See table 16 above).

SECTION 4

Health

Under 5's Development Checks

Dudley	2001/02	2002/03	2003/04	2004/05	2005/06
No. of 5 year olds and under at 30 September and looked after for at least twelve months	63	66	66	69	68
and of these, the number whose child health surveillance or child health promotion checks were up-to-date	36	39	50	50	40

Table 17

The number of children whose health checks were up to date in 2005/06 has fallen to its lowest level in 3 years (See table 17 above). Proportionately, up to date health checks have fallen too. Dudley's position has been falling below the national England average since 2001/02 (Refer to chart 27 below). Comparison data is not yet available for 2005/06.

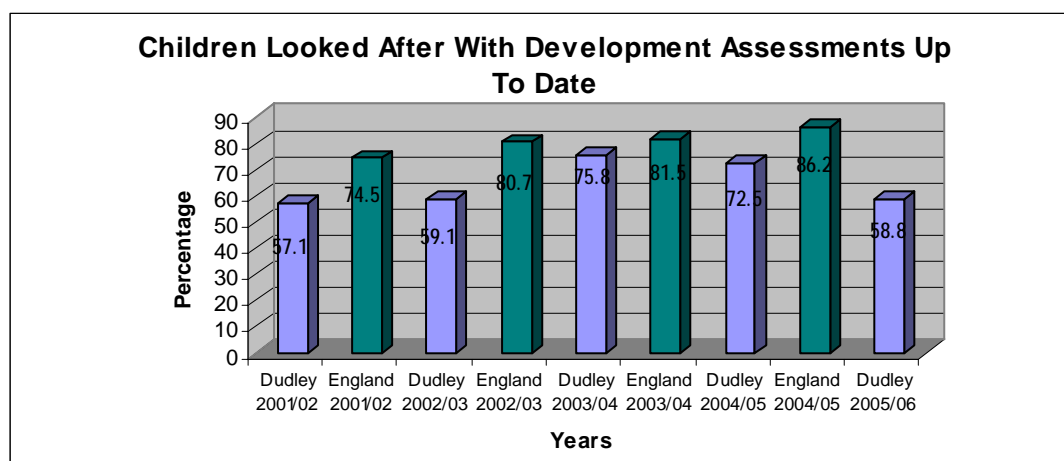


Chart 27

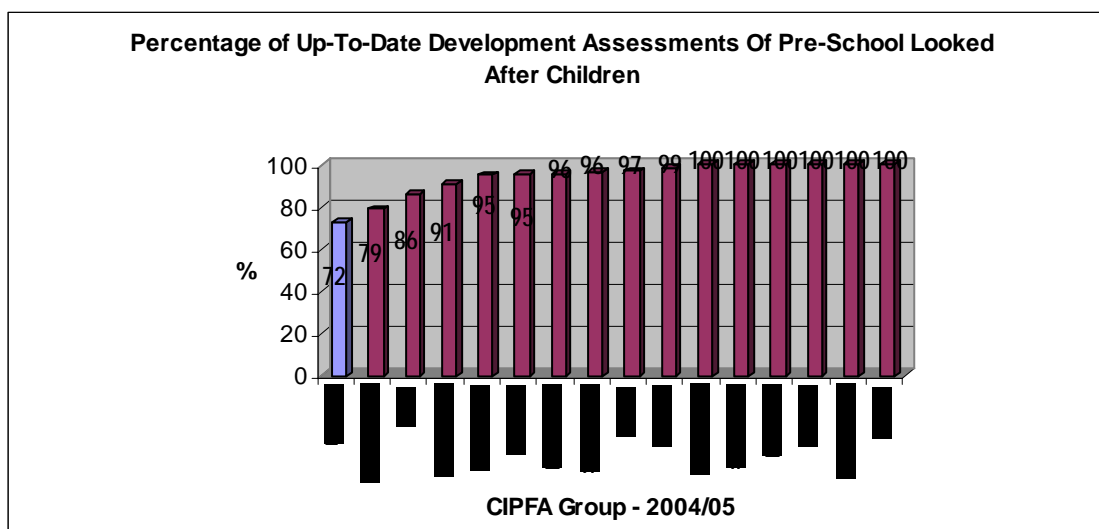


Chart 28

As can be seen in Chart 28 above Dudley was at the bottom of the CIPFA group in 2004/05. Dudley's performance in 2005/06 is unlikely to change this position significantly.

Placement	Development Checks Not Up To Date				Development Checks Up To Date				Grand Total	% of development checks up to date
	Freeing Order Granted	Full Care Order	Interim Care Order	Total	Freeing Order Granted	Full Care Order	Interim Care Order	Total		
A1 - Placed For Adoption (Not with Former Foster Carers)	3			3	7			7	10	70.0
A4 - Placed For Adoption With Consent (Under Section 19 of the 2002 Act) Not With Current Foster Carer	1			1					1	0.0
A6 - Placed For Adoption With Placement Order (Under Section 21 of the 2002 Act) Not With Current Foster Carer	2			2					2	0.0
F1 - Foster Placement With Relative or Friend Within LA		4	2	6		5		5	11	45.5
F2 - Placement With Other Foster Carer Provided By LA		6	2	8	4	6	1	11	19	57.9
F3 - Placement With Other Foster Carer Arranged Through Agency							3	3	3	100.0
F4 - Foster Placement With Relative or Friend Outside LA						5		5	5	100.0
F5 - Placement With Other Foster Carer Outside LA Provided By LA		1	1	2		1		1	3	33.3
F6 - Placement With Other Foster Carer Outside LA Arranged Through Agency						1	1	2	2	100.0
P1 - Placed With Own Parents or Other Person With Parental Responsibility		4	2	6		5	1	6	12	50.0
Grand Total	6	15	7	28	11	23	6	40	68	58.8

Table 18

Children who were placed with Foster Carers – Relative or Friend or Placed with Parents made up the majority of cases where development checks were not up to date (See Table 18 above).

Immunisations

Dudley	2001/02	2002/03	2003/04	2004/05	2005/06
Number of children looked after for at least twelve months whose immunisations were up to date at 30 September	252	272	218	250	277

Table 19

The number of children whose immunisations were up to date has increased this year (2006) (See table 19 above). Dudley's position in 2004/05 was below the national England average for children's up to date immunisations (Refer to chart 29 below). Comparison data is not yet available for 2006.

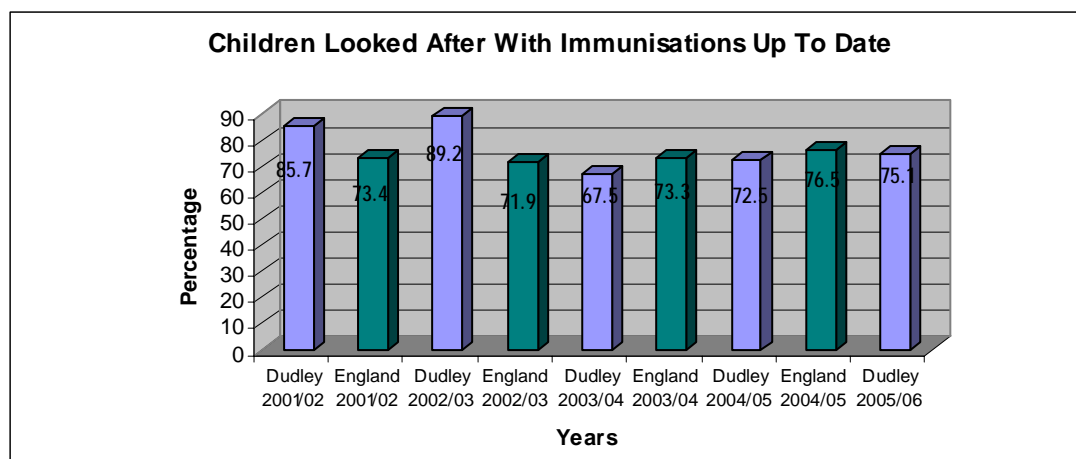


Chart 29

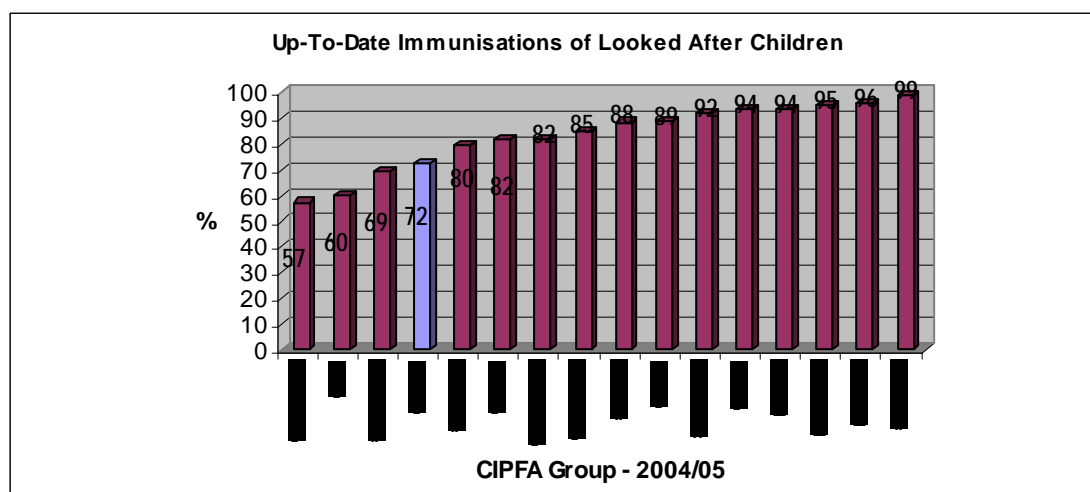


Chart 30

Chart 30 above shows Dudley's position within the CIPFA group for 2004/05. Whilst the number of immunisations that were up to date has increased in 2006 the increase may not be enough to move Dudley out of the lower quartile of the CIPFA group.

Table 20 overleaf, shows a break down of placements and immunisations.

Section 4

Placement	Immunisations Not Up To Date						Immunisations Up To Date					Grand Total	% of Immunisations Up To Date
	Freeing Order Granted	Full Care Order	Interim Care Order	Other	Voluntary Agreement (under sec 20)	Total	Freeing Order Granted	Full Care Order	Interim Care Order	Voluntary Agreement (under sec 20)	Total		
A1 - Placed For Adoption (Not with Former Foster Carers)	6					6	5				5	11	45.5
A4 - Placed For Adoption With Consent (Under Section 19 of the 2002 Act) Not With Current Foster Carer							1				1	1	100.0
A6 - Placed For Adoption With Placement Order (Under Section 21 of the 2002 Act) Not With Current Foster Carer	1					1	1				1	2	50.0
F1 - Foster Placement With Relative or Friend Within LA		8			2	10		24	2	7	33	43	76.7
F2 - Placement With Other Foster Carer Provided By LA	1	13	3		2	19	7	66	13	6	92	111	82.9
F3 - Placement With Other Foster Carer Arranged Through Agency									4		4	4	100.0
F4 - Foster Placement With Relative or Friend Outside LA		5			1	6		10			10	16	62.5
F5 - Placement With Other Foster Carer Outside LA Provided By LA	1	6	3		2	12		34	4	2	40	52	76.9
F6 - Placement With Other Foster Carer Outside LA Arranged Through Agency	1	5				6	1	23	2		26	32	81.3
H2 - Secure Unit Outside LA Boundary		1				1		2			2	3	66.7
H3 - Homes and Hostels Inside LA Boundary		1		1	2	4		7	1	1	9	13	69.2
H4 - Homes and Hostels Outside LA Boundary		2			1	3		11			11	14	78.6
H5 - Residential Accommodation Not Subject For Childrens Homes Regulations								1		1	2	2	100.0
M3 - Whereabouts Unknown		1				1						1	0.0
P1 - Placed With Own Parents or Other Person With Parental Responsibility		15				15		32	3		35	50	70.0
P2 - Independent living, e.g. in flat, lodgings, bedsit, Band B or with friends, with or without formal support		3				3		1			1	4	25.0
R1 - Residential Care Home			1			1		1			1	2	50.0
S1 - All Residential Schools, Except Where Dual Registered as a School and a Childrens Home					4	4		1		3	4	8	50.0
Grand Total	10	60	7	1	14	92	15	213	29	20	277	369	75.1

Table 20

Dental checks

Dudley	2001/02	2002/03	2003/04	2004/05	2005/06
Number of children looked after for at least twelve months who had their teeth checked during the twelve months to 30 September	201	223	231	241	258

Table 21

Whilst the number of children with dental checks up to date has increased in 2005/06, the proportion has remained the same. This is due to the rise in the size of the cohort. Dudley's position has been below the national average since 2001/02 (Refer to Chart 31 below). Information for 2005/06 comparisons is not yet available.

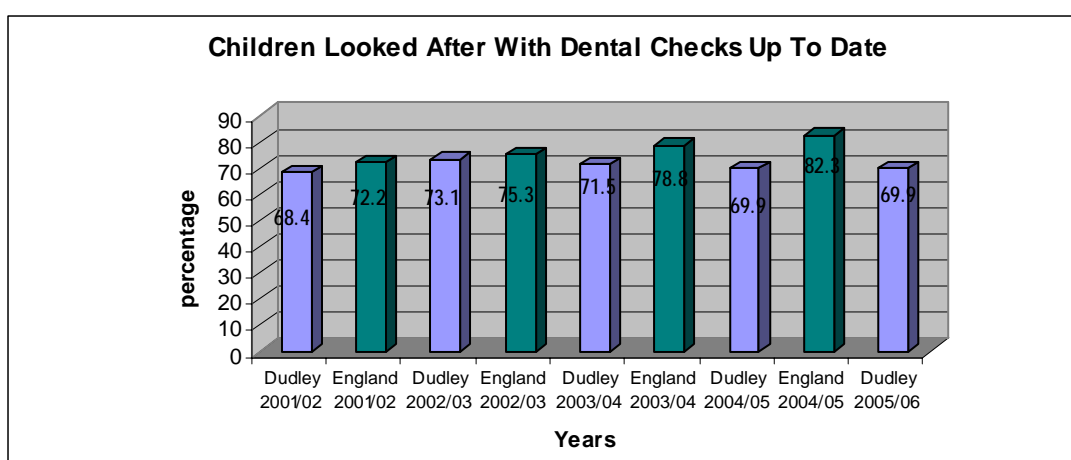


Chart 31

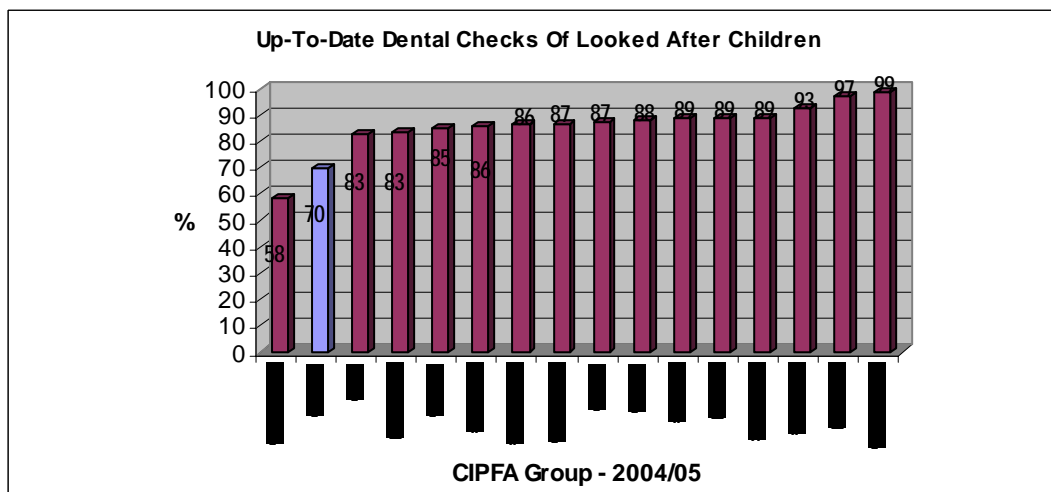


Chart 32

Chart 32 above shows Dudley in the lower quartile within the CIPFA group for 2004/05. Dudley's performance in 2006 is unlikely to move Dudley out of the lower quartile of the CIPFA group. Table 22 overleaf, shows a break down of placements, legal status and dental checks.

Table 22 Placement Type	Dental Checks Not Up To Date						Dental Checks Up To Date					Grand Total	% of Dental Checks Up To Date
	Freeing Order Granted	Full Care Order	Interim Care Order	Other	Voluntary Agreement (under section 20)	Total	Freeing Order Granted	Full Care Order	Interim Care Order	Voluntary Agreement (under section 20)	Total		
A1 - Placed For Adoption (Not with Former Foster Carers)	4					4	7				7	11	63.6
A4 - Placed For Adoption With Consent (Under Section 19 of the 2002 Act) Not With Current Foster Carer							1				1	1	100.0
A6 - Placed For Adoption With Placement Order (Under Section 21 of the 2002 Act) Not With Current Foster Carer	1					1	1				1	2	50.0
F1 - Foster Placement With Relative or Friend Within LA		8	1		2	11		24	1	7	32	43	74.4
F2 - Placement With Other Foster Carer Provided By LA	1	20	1		3	25	7	59	15	5	86	111	77.5
F3 - Placement With Other Foster Carer Arranged Through Agency									4		4	4	100.0
F4 - Foster Placement With Relative or Friend Outside LA		5				5		10		1	11	16	68.8
F5 - Placement With Other Foster Carer Outside LA Provided By LA		8	1		2	11	1	32	6	2	41	52	78.8
F6 - Placement With Other Foster Carer Outside LA Arranged Through Agency		5	1			6	2	23	1		26	32	81.3
H2 - Secure Unit Outside LA Boundary		1				1		2			2	3	66.7
H3 - Homes and Hostels Inside LA Boundary		2		1		3		6	1	3	10	13	76.9
H4 - Homes and Hostels Outside LA Boundary		5			1	6		8			8	14	57.1
H5 - Residential Accommodation Not Subject For Childrens Homes Regulations		1			1	2						2	0.0
M3 - Whereabouts Unknown								1			1	1	100.0
P1 - Placed With Own Parents or Other Person With Parental Responsibility		28				28		19	3		22	50	44.0
P2 - Independent living, e.g. in flat, lodgings, bedsit, Band B or with friends, with or without formal support		3				3		1			1	4	25.0
R1 - Residential Care Home								1	1		2	2	100.0
S1 - All Residential Schools, Except Where Dual Registered as a School and a Childrens Home					5	5		1		2	3	8	37.5
Grand Total	6	86	4	1	14	111	19	187	32	20	258	369	69.9

Table 23 below shows whether dental checks are up to date by age and team. Care Management Teams in the north accounted for the majority of the cases that were not recorded on Swift. This suggests that there may be problems with the flow of information from Social workers to team clerks and /or recording information on Swift.

Team & Age	Dental Check Completed																	Not Recorded																	YP Refused Dental Check		Grand Total
	1	2	3	4	5	6	7	8	9	10	11	12	13	14	15	16	17	Total	2	3	4	5	6	7	8	9	10	12	13	14	15	16	17	Total	17	Total	
16plus																6	5	11													1	8	19	28	1	1	40
C&F At N2	1																	1									1									2	
C&F Cm N1	4	1	3	6	2	3	4	7	3	10	7	10	9	5	8			82	1	2	2	5	1	2			1	1	3	3	1	2	1	25			107
C&F Cm N2	1	1	3	1	5		9	5	1	4	2	5	5	2	2			46	2	1	1			1	2	2	1	3	4	3	4	3		27			73
C&F Cm S Bh		2		2	5	4	1	2	3	5	7	3	5	5	7	2	1	54		1			1	1	1			1	3	1	1		1	11			65
C&F Cm S Hs	2	4	2	2	2	3	2	7	4	3	3	2	4	5	6			51				1		1		1		2	2	2		1		10			61
C&F Team 4					1													1																		1	
Childrens Disability							2		1	1		1			2	1	2	10	1				1					2	2		1	1	8			18	
Not Recorded				1														1													1		1			2	
Grand Total	8	8	8	12	15	10	18	21	12	23	19	21	23	17	25	9	8	257	4	4	3	6	2	6	3	3	2	8	14	11	7	16	22	111	1	1	369

Table 23

Health assessments

Dudley	2001/02	2002/03	2003/04	2004/05	2005/06
Number of children looked after for at least twelve months who had their annual health assessment during the twelve months to 30 September	201	217	223	253	264

Table 24

Dudley has seen a rise in the number of children whose annual health assessments were up to date, however, the overall percentage has fallen (Refer to Chart 33 below).

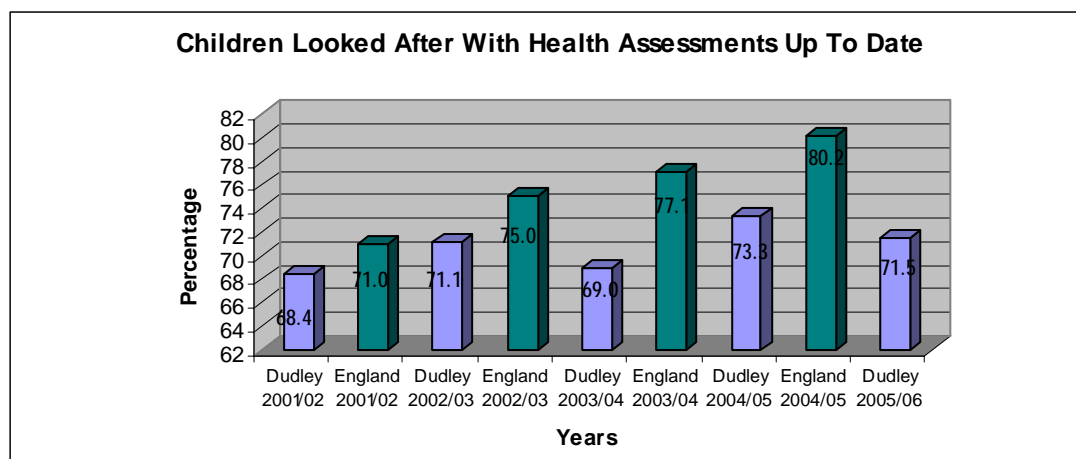


Chart 33

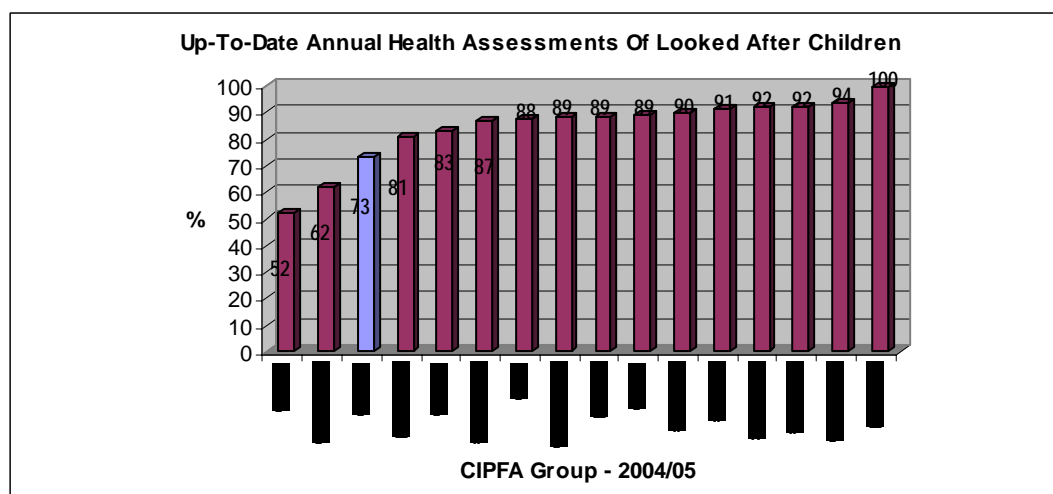


Chart 34

The CIPFA group 2004/05 shows Dudley at the lower end of the group. Results for 2006 are unlikely to change Dudley's position significantly as the other group members have annual health assessments up to date for 80 and 90% of the cohort (Refer to Chart 34 above).

Table 24 shows health assessments and placements of children looked after.

Placement	Health Assessment Not Up-To-Date						Health Assessment Up-To-Date					Grand Total	% of Health Assessments Up To Date
	Freeing Order Granted	Full Care Order	Interim Care Order	Other	Voluntary Agreement (under sec 20)	Total	Freeing Order Granted	Full Care Order	Interim Care Order	Voluntary Agreement (under sec 20)	Total		
Carers)	6					6	5				5	11	45.5
A4 - Placed For Adoption With Consent (Under Section 19 of the 2002 Act) Not With Current Foster Carer							1				1	1	100.0
A6 - Placed For Adoption With Placement Order (Under Section 21 of the 2002 Act) Not With Current Foster Carer							2				2	2	100.0
F1 - Foster Placement With Relative or Friend Within LA		11	1		3	15		21	1	6	28	43	65.1
F2 - Placement With Other Foster Carer Provided By LA	2	21	3		2	28	6	58	13	6	83	111	74.8
F3 - Placement With Other Foster Carer Arranged Through Agency									4		4	4	100.0
LA		2			1	3		13			13	16	81.3
F5 - Placement With Other Foster Carer Outside LA Provided By LA		10	3		3	16	1	30	4	1	36	52	69.2
F6 - Placement With Other Foster Carer Outside LA Arranged Through Agency		7				7	2	21	2		25	32	78.1
H2 - Secure Unit Outside LA Boundary		1				1		2			2	3	66.7
H3 - Homes and Hostels Inside LA Boundary		3		1		4		5	1	3	9	13	69.2
H4 - Homes and Hostels Outside LA Boundary		4				4		9		1	10	14	71.4
H5 - Residential Accommodation Not Subject For Childrens Homes Regulations		1				1				1	1	2	50.0
M3 - Whereabouts Unknown		1				1						1	0.0
P1 - Placed With Own Parents or Other Person With Parental Responsibility		14				14		33	3		36	50	72.0
P2 - Independent living, e.g. in flat, lodgings, bedsit, Band B or with friends, with or without formal support		4				4						4	0.0
R1 - Residential Care Home								1	1		2	2	100.0
S1 - All Residential Schools, Except Where Dual Registered as a School and a Childrens Home		1				1				7	7	8	87.5
Grand Total	8	80	7	1	9	105	17	193	29	25	264	369	71.5

Table 25

Table 26 below shows whether annual health assessments are up to date by age and team. The 16+ team had the highest number of cases that were not recorded on Swift. This may be due to a higher proportion of young people refusing to have an Annual Health Assessment.

Team & Age	Annual Health Assessment Completed																	YP Refused Annual Health Assessment							Not Recorded																	Parent/ Carer Refused AHA	Grand Total						
	1	2	3	4	5	6	7	8	9	10	11	12	13	14	15	16	17	Total	8	10	12	13	14	15	16	17	Total	1	2	3	4	5	6	7	8	9	10	11	12	13	14	15		16	17	Total	7	Total	
16plus																6	6	12							1	1	11	13															7	8	15			40	
C&F At N2	1												1					2																													2		
C&F Cm N1	4	2	4	8	6	4	6	6	3	8	6	9	8	7	7	2	1	91		1							1			1			1			2	1	2	4	1	2			15			107		
C&F Cm N2	1	1	4	1	4		7	5	1	3	2	5	7	4	3	1		49							1			1		2		1	1		3	2	2	2		3	2	1	2	2		23			73
C&F Cm S Bh		2		2	4	3	1	2	2	4	4	3	7	1	6	1		42	1			1	1	4	2	1	2	12		1		1	2			1	1	3			1				10	1		1	65
C&F Cm S Hs	1	3	1	2	3	3	3	7	5	2	3	2	5	6	5		51		1			1		1	1		4	1	1	1							2		1					6			61		
C&F Team 4																																1											1			1			
Childrens Disability							3			1	1		1	2	2	2	2	3	17										1																1			18	
Not Recorded																									1		1				1													1			2		
Grand Total	7	8	9	13	17	10	20	20	12	18	15	21	29	20	23	12	10	264	1	2	1	2	4	5	4	13	32	1	4	3	2	4	2	3	3	3	5	4	7	6	4	4	9	8	72	1		1	369

Table 26

Intentionally left blank

SECTION 5

School Leavers

Position at age 16 or over

Dudley - Number at 30th September	2001/02	2002/03	2003/04	2004/05	2005/06
No. in year 11 at school who were eligible for GCSE (or equivalent) examinations	20	24	15	32	27
in full- time education	12	16	10	21	23
in full- time training	1	3	1	1	0
in full- time employment with planned training	0	0	0	4	1
in full- time employment with no planned training	3	1	3	1	0
in part- time employment, education, or training	1	0	0	1	0
unemployed as a result of ill-health or a disability	0	0	0	0	0
Unemployed for other reason	3	4	1	4	3

Table 27

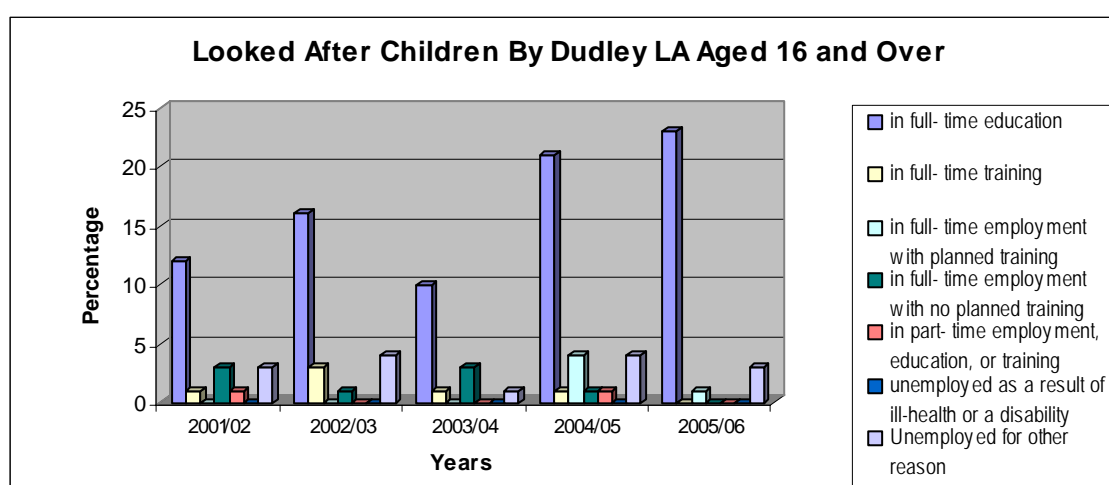


Chart 35

The numbers of looked after children aged 16 and over in full time education (2006) is lower than the previous year (see chart 35 and table 27 above). The proportion of young people, with a positive outcome (not unemployed) has risen from 87.5% in 2005 to 88.9% in 2006. (Refer to table 28 below). Information for 2006 comparison is not yet available.

% at 30th September	Dudley 2001/02	England 2001/02	Dudley 2002/03	England 2002/03	Dudley 2003/04	England 2003/04	Dudley 2004/05	England 2004/05	Dudley 2005/06
in full- time education	60.0	55.6	66.7	56.7	66.7	59.0	65.6	61.4	85.2
in full- time training	5.0	7.6	12.5	8.4	6.7	8.0	3.1	7.7	0.0
in full- time employment with planned training	0.0	3.7	0.0	2.8	0.0	3.0	12.5	2.3	3.7
in full- time employment with no planned training	15.0	3.7	4.2	3.4	20.0	2.0	3.1	1.9	0.0
in part- time employment, education, or training	5.0	5.5	0.0	6.3	0.0	6.0	3.1	6.6	0.0
unemployed as a result of ill-health or a disability	0.0	1.8	0.0	1.5	0.0	1.0	0.0	1.2	0.0
Unemployed for other reason	15.0	22.0	16.7	20.8	6.7	21.0	12.5	18.8	11.1

Table 28

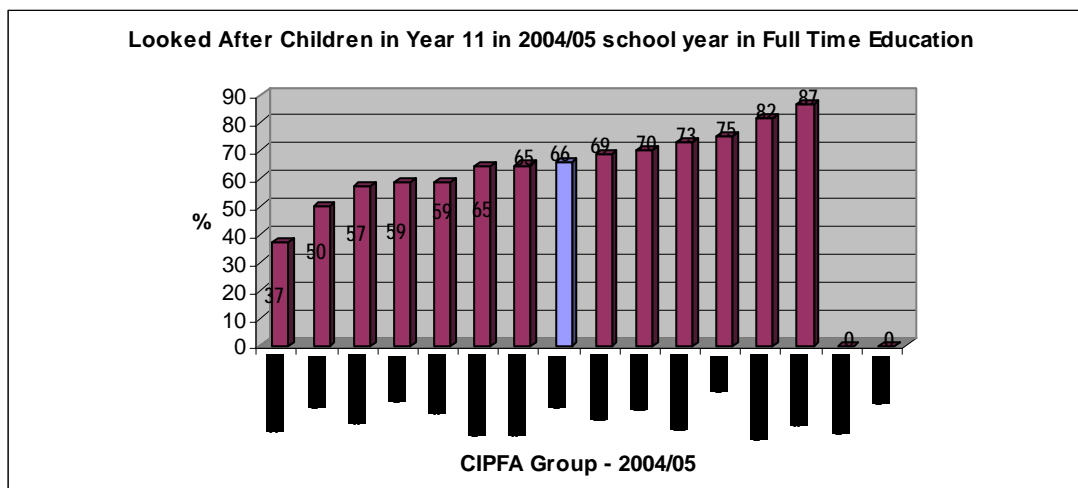


Chart 36

Chart 36 above shows the CIPFA group for 2004/05. Dudley was in the middle of this group. Charts 37 and 38 have a number of the authorities data suppressed therefore it is difficult to assess Dudley's performance along side these authorities.

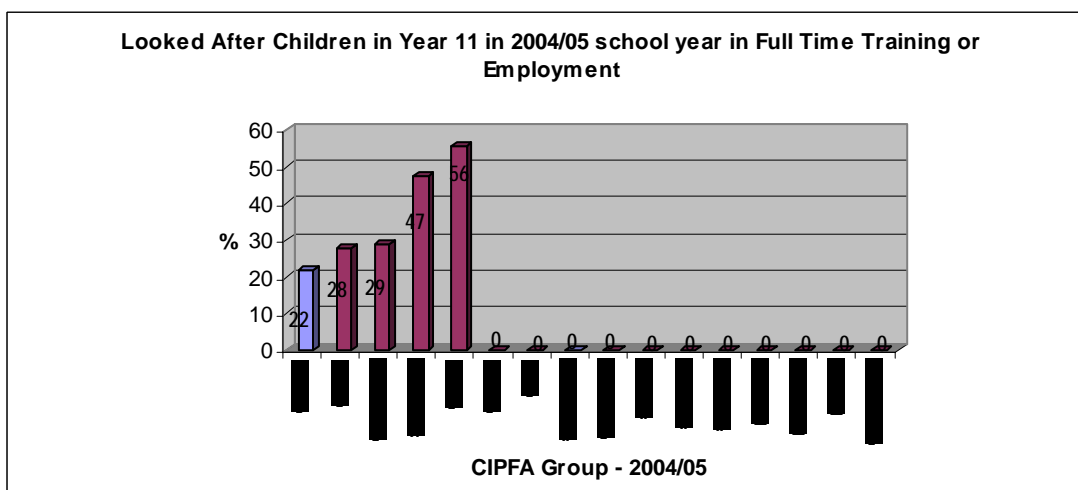


Chart 37

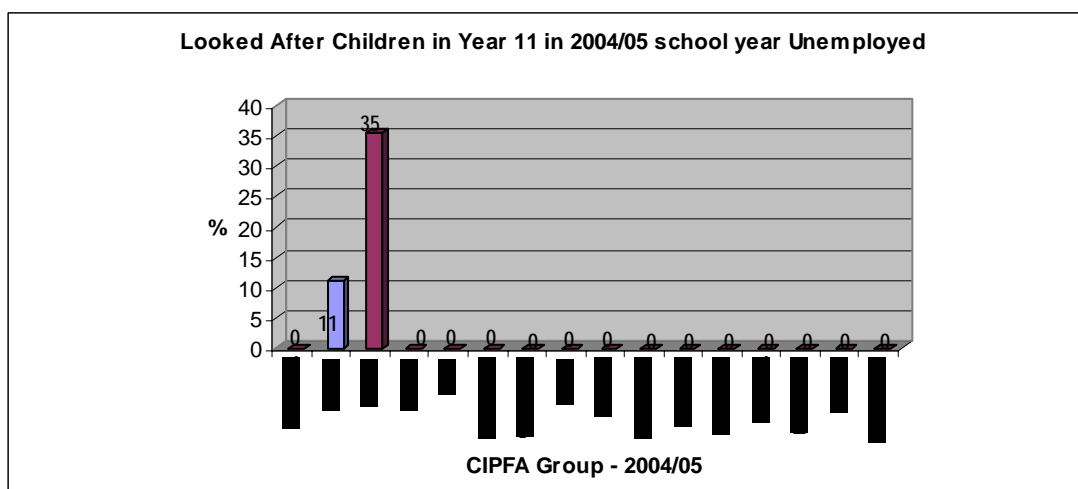


Chart 38

Intentionally left blank

SECTION 6

Performance Indicators

Reference: PAF: C81, (New Indicator)

Definition: The percentage of children aged 10 or over who had been looked after continuously for at least 12 months, who were given a final warning/reprimand or convicted during the year for an offence committed whilst they were looked after, expressed as a ratio of the percentage of all children aged 10 or over given a final warning/reprimand or convicted for an offence in the police force area.

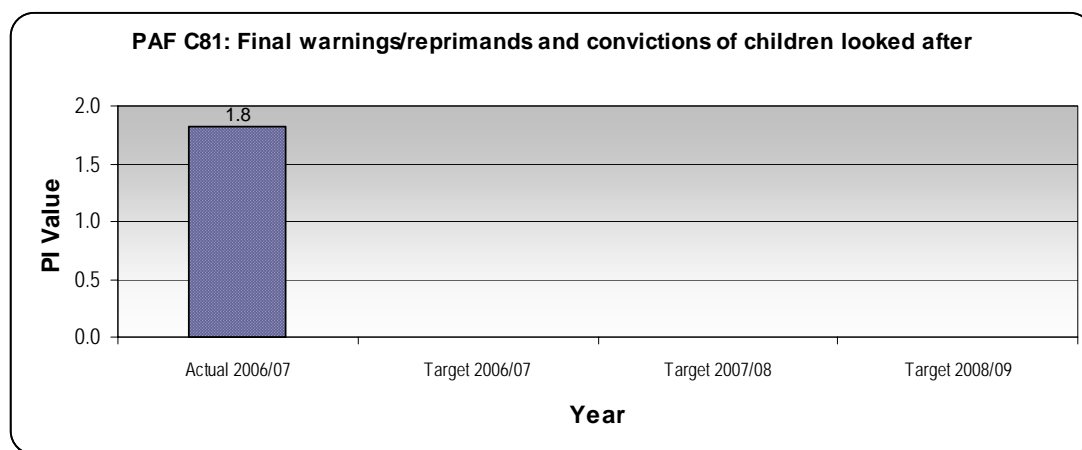


Chart 39

Targets:	Numerator	Denominator	PI Value	Blob Rating	Bandings	
Actual 2006/07	8.0	4.37	1.8		Low	3● =
Target 2006/07					1● =	4● =
Target 2007/08					2● =	5● =
Target 2008/09					Quartile 2005/06 (Eng) Lower = Upper =	

PAF C81 is based upon the previous PAF indicator PAF C18

Based upon the bandings for the old indicator PAF C18 Dudley would have achieved the top banding in 2005/06 for this indicator, however, as the new information for the denominator and bandings are not yet available it is difficult to predict whether Dudley has performed well with this indicator.

Comparator information is not yet available for this indicator.

Reference: PAF: C19, APA: BH(LAC)1

Definition: The average of the percentage of children looked after at 30 September who had been looked after continuously for at least 12 months, and who had their teeth checked by a dentist during the previous 12 months, and had an annual health assessment during the previous 12 months.

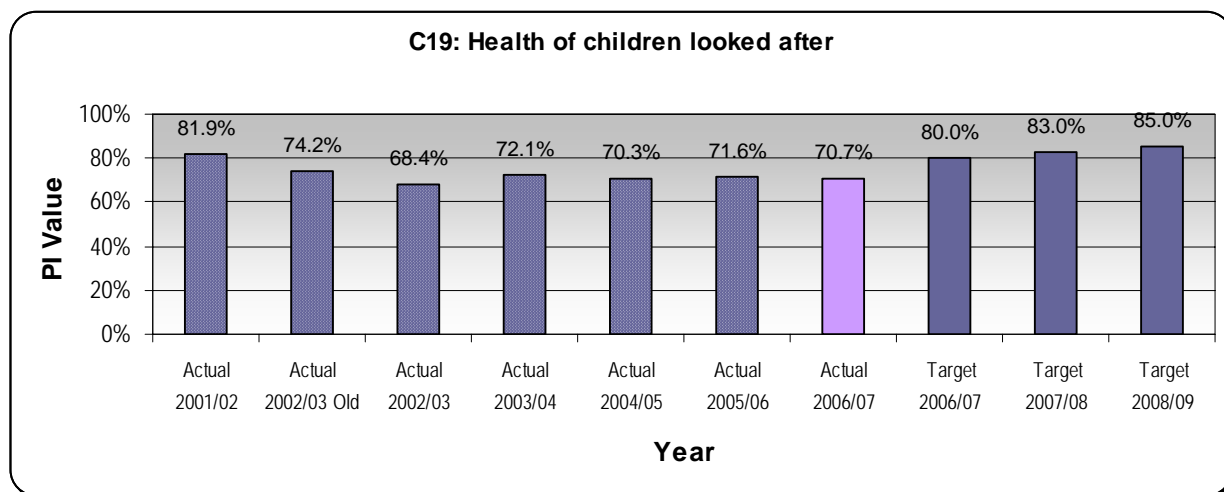


Chart 40

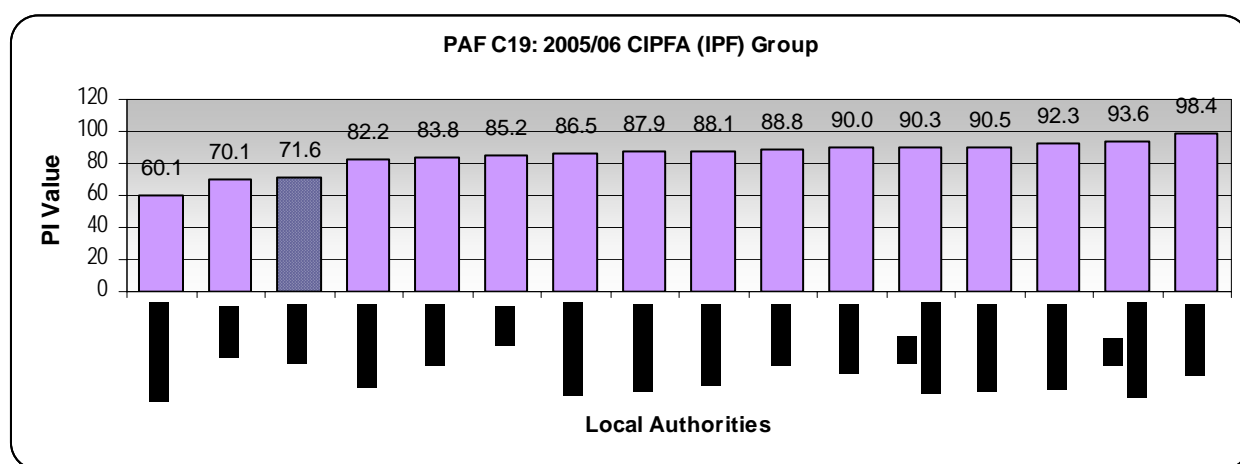


Chart 41

Targets:	Numerator	Denominator	PI Value	Blob Rating	Bandings 2006-07
Actual 2002/03	201	294	68.4%	3	1● = 0 to 50 2● = 50 to 60 3● = 60 to 70 4● = 70 to 80 5● = 80 to 100
Actual 2003/04	220	305	72.1%	4	
Actual 2004/05	227	323	70.3%	4	
Actual 2005/06	247	345	71.6%	4	
Actual 2006/07	261	369	70.7%	1	
Target 2006/07	276	345	80.0%	5	Quartile 2005/06 (Eng) Lower = 79.7 Upper = 88.4
Target 2007/08	~286	345	83.0%	5	
Target 2008/09	~293	345	85.0%	5	

Dudley has achieved a 4 blob banding in 2005/06 subject to banding changes.

Reference: PAF: C24, APA: E&A(LAC)6

Definition: The percentage of children who had been looked after continuously for at least 12 months and were of school age, who missed a total of at least 25 days of schooling for any reason during the previous school year.

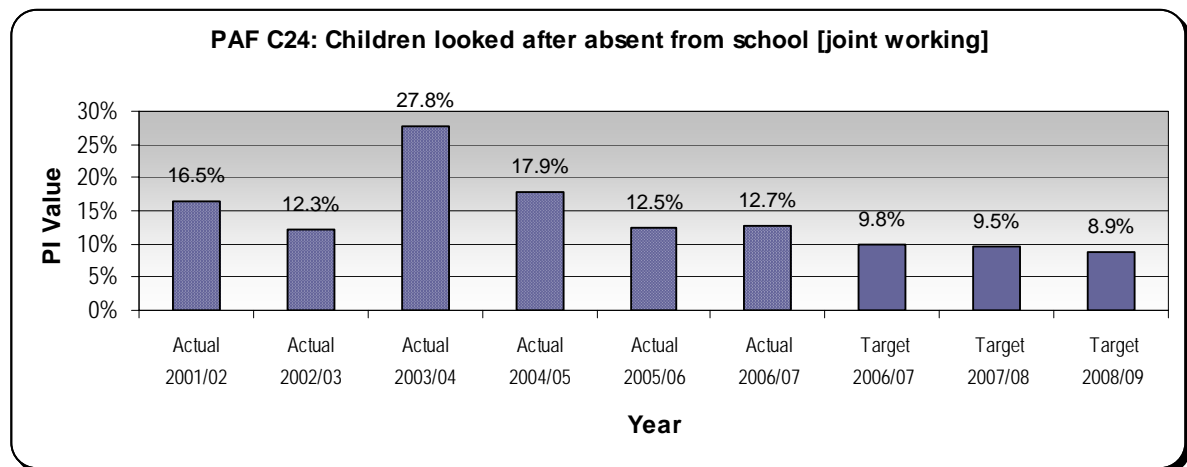


Chart 42

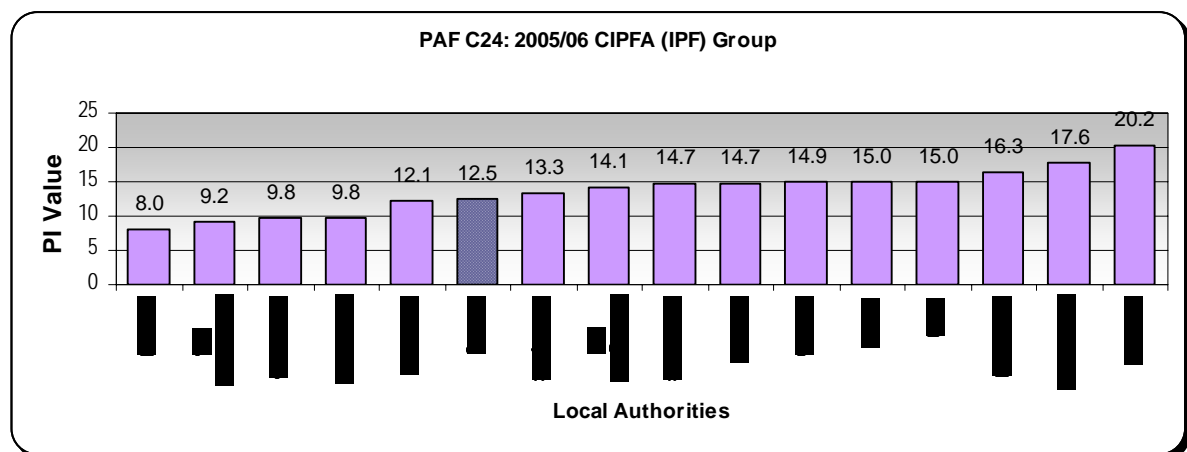


Chart 43

Targets:	Numerator	Denominator	PI Value	Blob Rating	Bandings 2006-07
Actual 2002/03	27	219	12.3%	3	1● = 20+ 2● = 15 to 20 3● = 10 to 15 4● = 5 to 10 5● = 0 to 5
Actual 2003/04	66	237	27.8%	1	
Actual 2004/05	45	252	17.9%	2	
Actual 2005/06	34	272	12.5%	3	
Actual 2006/07	37	291	12.7%	3	
Target 2006/07	30	305	9.8%	4	Quartile 2005/06 (Eng) Lower = 9.2 Upper = 15.5
Target 2007/08	29	305	9.5%	4	
Target 2008/09	27	305	8.9%	4	

Dudley has achieved a 3 blob banding in 2005/06 subject to banding changes. This is an increase in blob rating for the 3rd consecutive year.

Reference: APA: 3071SC, DELL: A&I 022 – DSP1 023

Definition: Of the pupils in year eleven who were eligible for GCSE (or equivalent) examinations, the proportion who sat at least one GCSE equivalent exam.

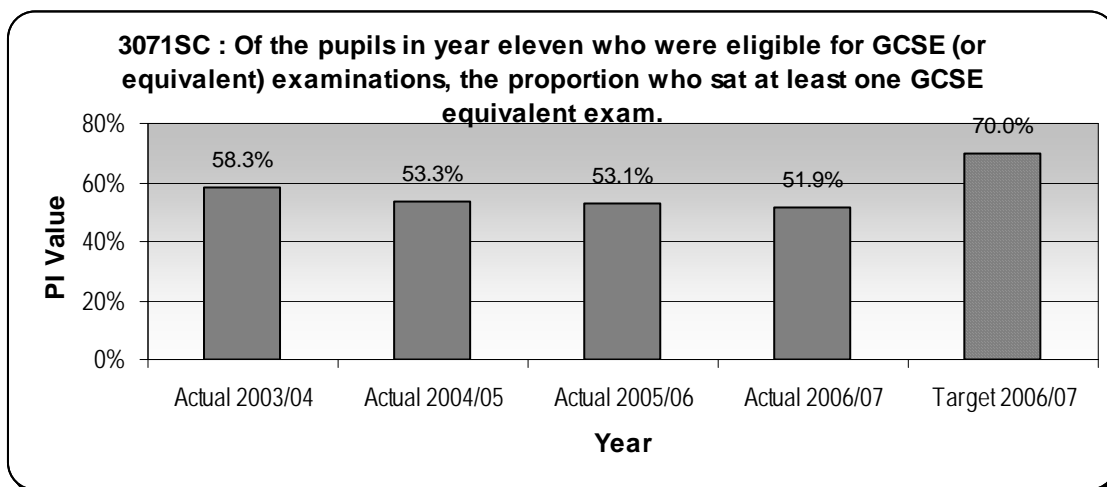


Chart 44

Targets:	Numerator	Denominator	PI Value
Actual 2003/04	14	24	58.3%
Actual 2004/05	8	15	53.3%
Actual 2005/06	17	32	53.1%
Actual 2006/07	14	27	51.9%
Target 2005/06	17	33	51.5%

As this indicator is not a PAF indicator, there is no blob rating. Refer to chart 21 on page 25 for CIPFA comparison group.

Intentionally left blank

Summary of Main Findings

1. The rise in the looked after population, within Dudley, is reflected in the increased numbers of children falling into the OC2 cohort.
2. A larger proportion of boys (58.2%) are looked after than girls.
3. Those children placed with parents had higher levels of absenteeism than other looked after children.
4. The proportion of children at Key Stages 1 achieving level 2 in writing, reading and mathematics has decreased.
5. The proportion of children at Key Stages 2 and 3 achieving levels 4 and 5 in Science has increased.
6. Key Stage 1, 2 and 3 SATS and GCSE results for children looked after by Dudley were lower than the average for Dudley MBC.
7. The proportion of children at Key Stage 4 who attained 5 or more GCSE's at grade A* to C has increased, however, whilst 55.6% of Dudley borough children gain 5 GCSE's, only 7.4% of Dudley LAC gain 5 GCSE's at grade A*-C.
8. The percentage of LAC, who were given a final warning/reprimand or convicted during the year for an offence committed, is double that of all children aged 10-17 in the police force area.
9. The proportion of up to date development checks and annual health assessments has decreased, however, the proportion of up to date immunisations has risen.
10. Dudley is in the lower quartile of the CIFPA group for up to date Development Checks, Immunisations, Dental Checks and Annual Health Assessments.
11. The percentage of children aged 16 and over with a positive outcome is has increased from 87.5% in 2005 to 88.9% in 2006.

Compiled by

Helen Jackson

Business Services Consultant
(Performance & Management Information)
Information Team