
Halesowen Area Committee – 7th November 2012

Report of the Director of Children’s Services

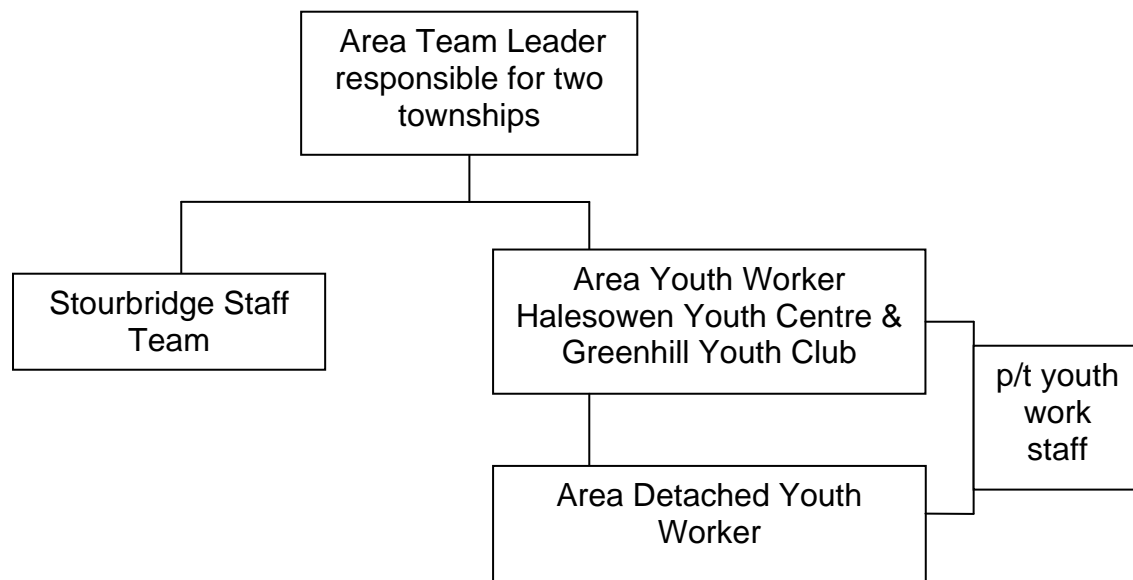
Youth Service Report

Purpose of Report

1. To update the Committee on the Youth Service provision for the **Halesowen Area.**

Background

2. The Youth Service continues to deliver activities within the Halesowen Area where the youth work delivery supports young people’s personal and social development. Through the provision of a range of interventions including targeted support, signposting, strong social support networks that develop and strengthen resilience and access to safe and supportive environments to challenge and be challenged, young people are able to raise aspirations and to contribute to decision making amongst peers and the wider community. “... involvement in activities of this nature is having a significant impact on the confidence and self esteem of young people” Dudley Inspection of Safeguarding and looked after children January 2012.
3. Youth work is not bound by time limits and some young people will dip in and out influenced by immediate needs and interests. Others will maintain a long term relationship with the service often volunteering peer support and becoming senior members and part time staff.
4. Support to targeted groups of young people remains a priority as is provision to vulnerable groups. The following is the current youth service staff structure for the Halesowen Area;



5. The current weekly youth service programme within the Halesowen Area is:

| Day | Time | Centre/Project/Club |
|-----------|-------------|--------------------------------------|
| Monday | 6.00-9.00pm | Greenhill Disability Youth Club |
| Tuesday | 6.30-9.30pm | Halesowen Youth Centre (Girls Group) |
| | 6.30-9.30pm | Detached Youth Work |
| Wednesday | 6.30-9.30pm | Halesowen Youth Centre |
| | 6.00-9.00pm | Detached Youth Work |
| Thursday | 6.30-9.30pm | Halesowen Youth Centre |
| | 6.30-9.30pm | Green Hill Youth Club |
| | 6.00-9.00pm | Detached Youth Work |
| Friday | 6.30-9.30pm | Halesowen Youth centre |
| | 6.00-9.00pm | Detached Youth Work |

6. Within the last six months a review of Halesowen Youth Centre was undertaken. This considered condition, current usage and further capacity to support the local youth work sector and other organisations / services within the Halesowen area. In order to ensure full access by young people work is underway to install a disabled toilet and internal ramp. This will enable the service to increase the work with and opportunities for young disabled people. An Ofsted inspection survey in July 2012 recognised the good work delivered by the Youth Service with young people with learning disabilities.

7. Halesowen youth centre supports such organisations as Tenterfields Children's centre, Social Services Contact Team, Connexions and the Yemeni Association to deliver their provision.
8. A full time youth worker and some part time staff are trained to deliver workshops and run drop in sessions around sexual health and relationship education. The service and NHS Dudley co-manage the CCard system, a programme providing advice and condom distribution in none clinical settings. Through youth centres and alternative drop ins the service is the largest single agency operating the system. Halesowen team is operating the C Card system at Halesowen Youth Centre, Greenhill Youth Club and on Detached sessions as well as a drop in at Hunting Tree Healthy Hub with the future implementation of this area of work at Halesowen Library.
9. In addition external funding was received from the Drugs and Alcohol Team, Dudley PCT by Halesowen Youth Centre for £1,500.00. Young people have designed alcohol awareness workshops that other young people and staff can then use as a tool to work with other groups in order to address alcohol related health concerns.
10. During the summer period partnership work with Huntingtree Park Rangers and use of the Healthy Hub was developed and parks will be a key area for the Detached Team, especially during the coming darker nights period.
11. The Halesowen team has also implemented a work plan for the year and aims to be responsive to local need, in particular working closely with the Police in order to combat Anti Social Behaviour through detached youth work. It will be possible for young people and key partners to continue to contribute to the development of the identified actions.
12. In order to respond to Anti Social Behaviour within the area the Detached team attend PACT Meetings in order to inform the members of what the Youth Service is doing within the area but also to gather up to date information and identify current "Hot Spot" areas to work within.
13. The Youth Service has a long established commitment to youth participation including co-ordinating and supporting the United Kingdom Youth Parliament project and Dudley Youth Council. The Halesowen Area Youth Forum feeds in to both as well as accessing other opportunities to develop democracy and campaigning skills.

14. Young people within the Area contributed to the 2012-14 borough wide Youth Survey. The results fed into the future planning of the contributing stakeholders which included West Midlands Police, Dudley Council for Voluntary Services, young people and NHS Dudley.

The survey results can be found at www.dudley.gov.uk/education-and-learning/youth-service.

15. As the Service moves forward the priority is to continue to develop 'teen' centres that act as a hub for a combination of targeted, open access, health and other support services for young people. Young people will continue to be actively involved in shaping the services delivered. In addition, the Service will continue to facilitate the capacity building of the voluntary youth sector in order that they are enabled to deliver the majority of universal provision.

Finance

16. The Youth Service Offer within the **Halesowen Area** is achievable within the allocated budget.

Law

17. The proposed actions will enable the Area Team within the Youth Service to meet its duties under the Aiming High for Young People – a ten year strategy 'to promote the well being of persons aged 13-19 by securing access to educational and recreational activities and facilities', the Education and Inspections Act 2006.

Equality Impact

18. The offer will continue to provide facilities with regard to disadvantaged young people and all young peoples' needs.

The work carried out by the team promotes and ensures that young people are actively involved in developing and improving services that are provided for them.

Recommendation

19. That the Committee note for comment the contents of the Youth Service **Halesowen Area** Report.



.....
Jane Porter
Director of Children's Services

Contact Officer: Dominic Tipping, Area Team Leader
Telephone: 01384 81 3956 / 3955
Email: dominic.tipping@dudley.gov.uk