

Proposed Dudley Archive and Local History Centre

*Report to Select Committee,
Regeneration, Culture and Adult
Education*

3rd March 2010

Proposed Dudley Archive and Local History Centre

- Black Country Living Museum Site
- Update of latest plans
 - Concept Designs
 - Architect's Impression
 - Schematic layouts



Tipton Rd, Dudley



Tipton Rd, Dudley, UK







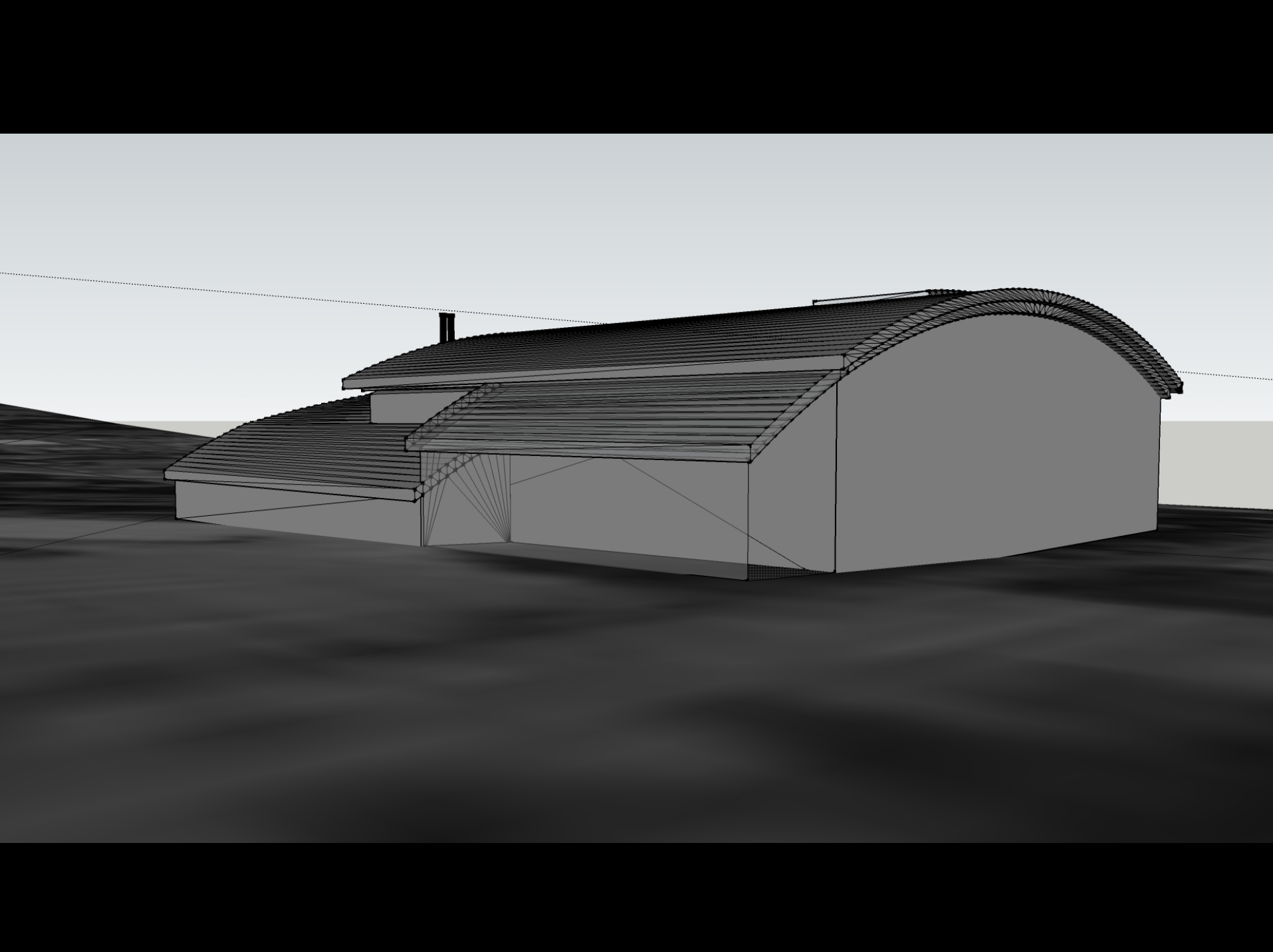
© 2010 Infoterra Ltd & Bluesky

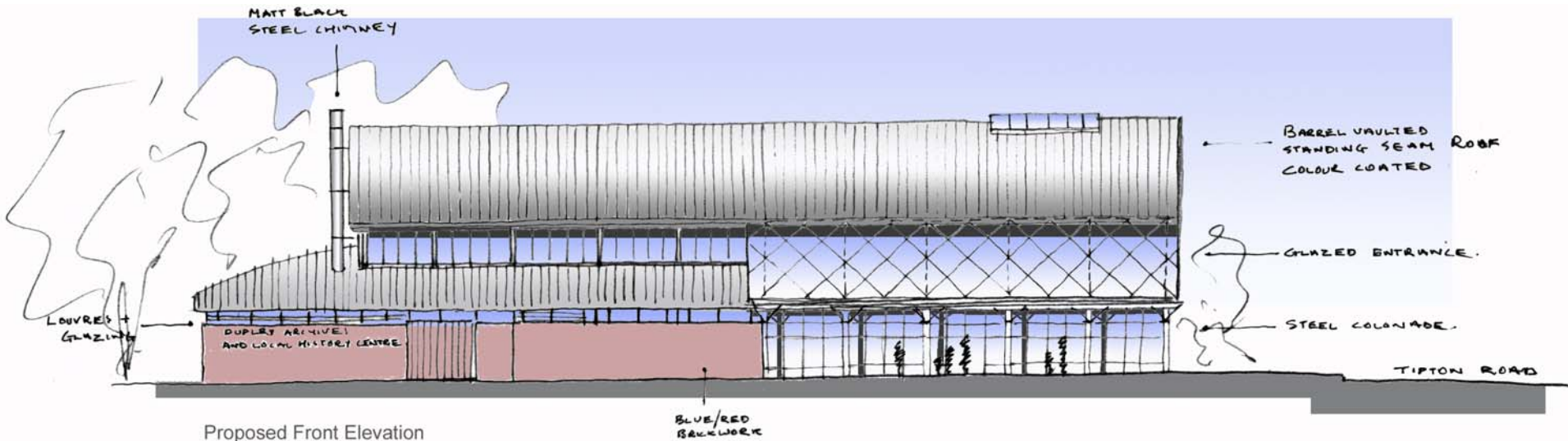
© 2010 Tele Atlas

52°31'14.99" N 2°04'27.56" W elev 157 m

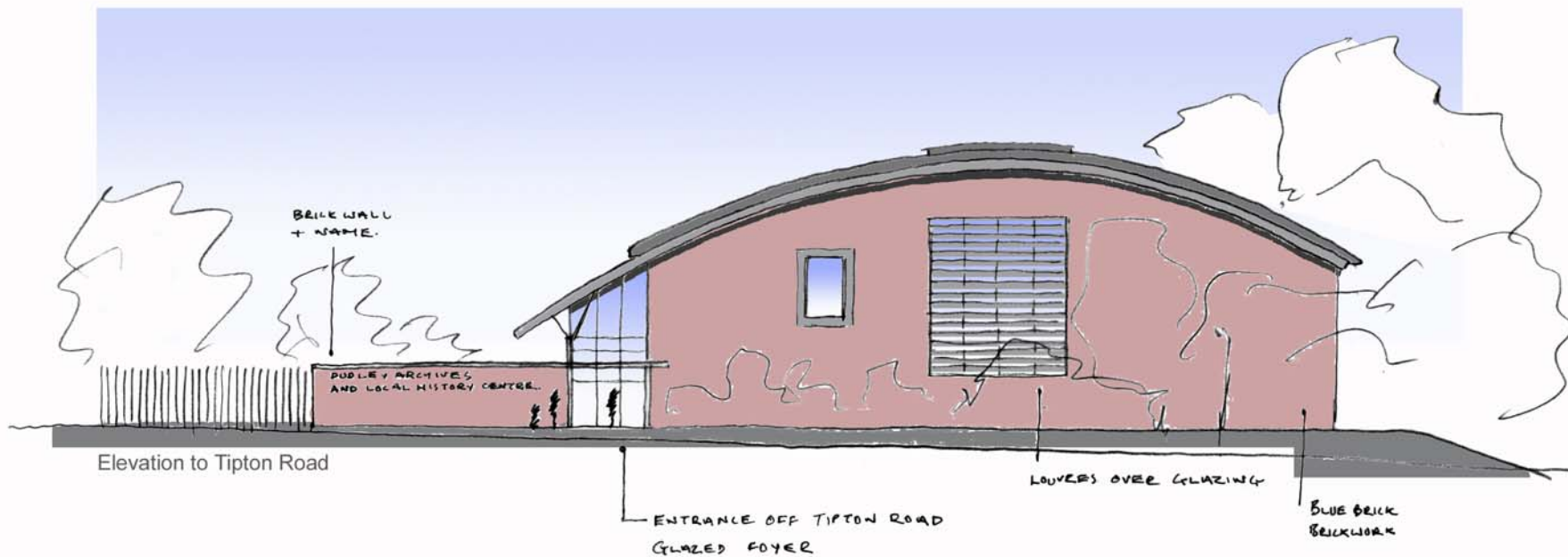
©2009 Google

Eye alt 223 m



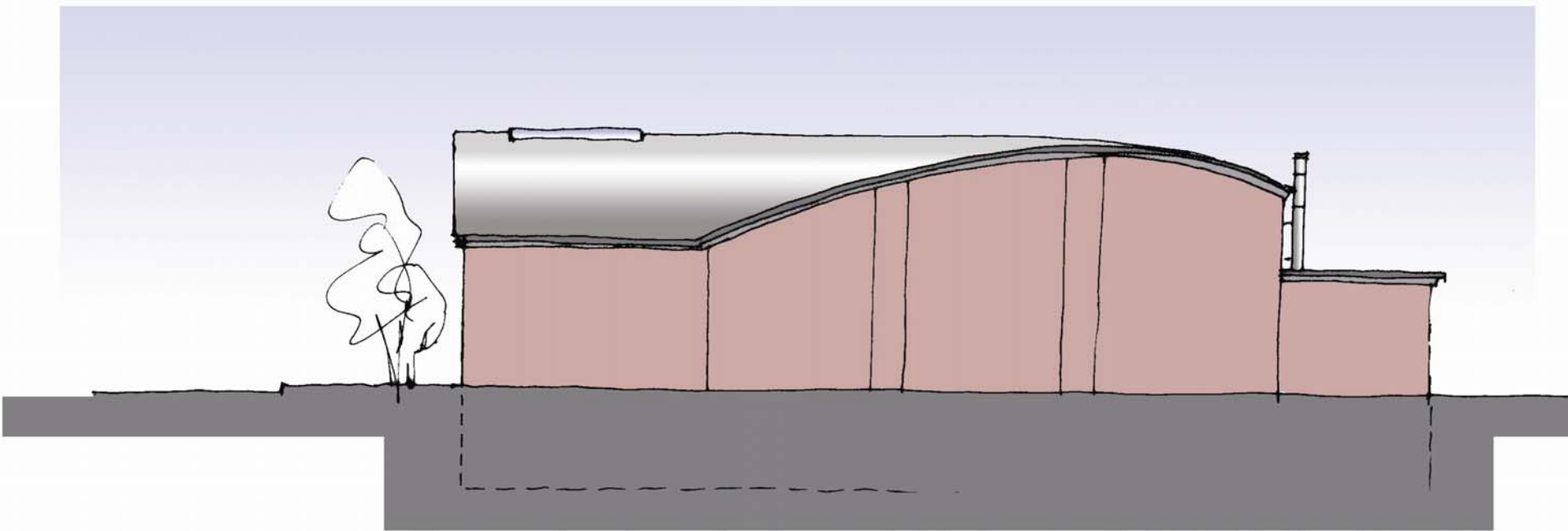
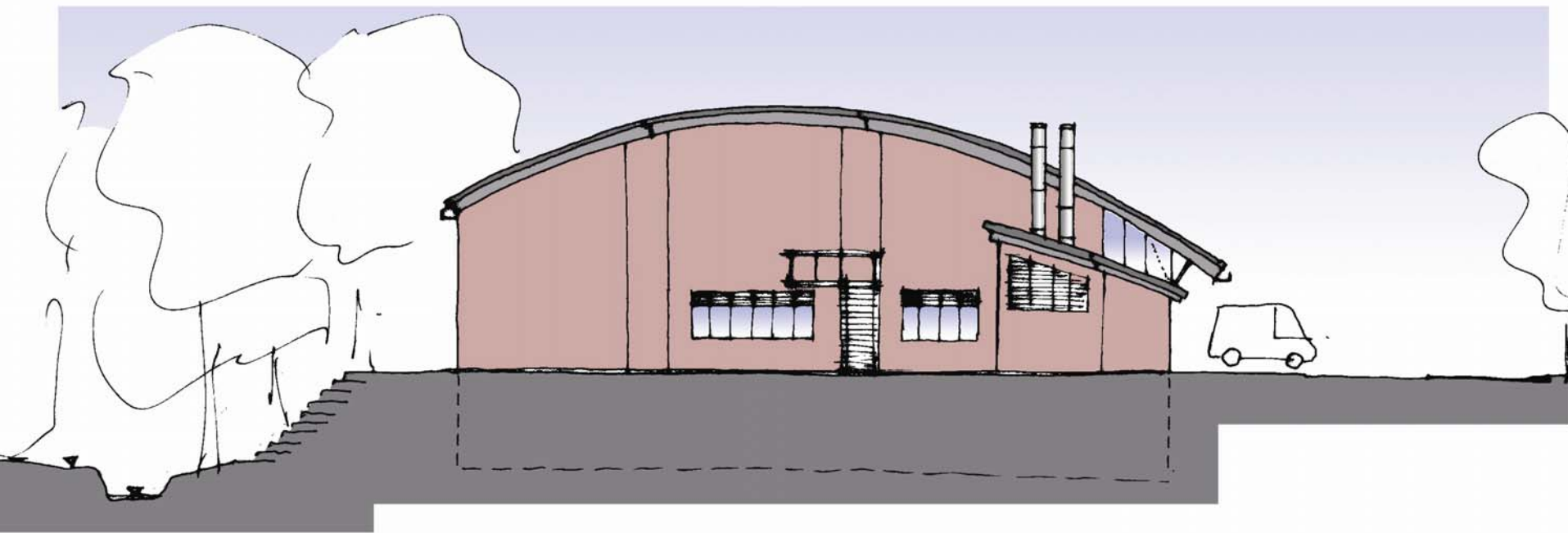


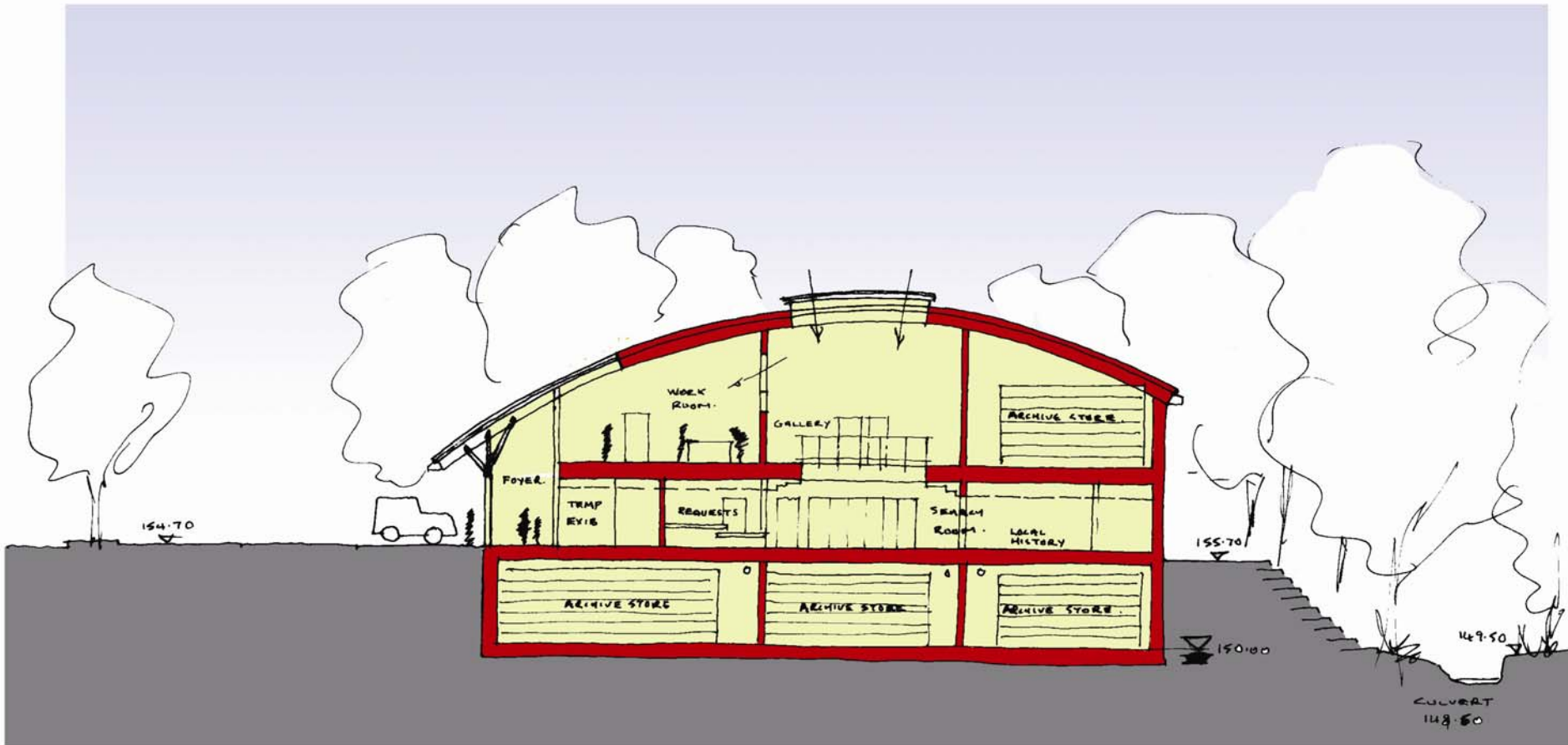
Proposed Front Elevation



Elevation to Tipton Road

Dudley Archives and Local History Centre
 Sketch Elevations Scale 1:200
 Corporate Property Architects

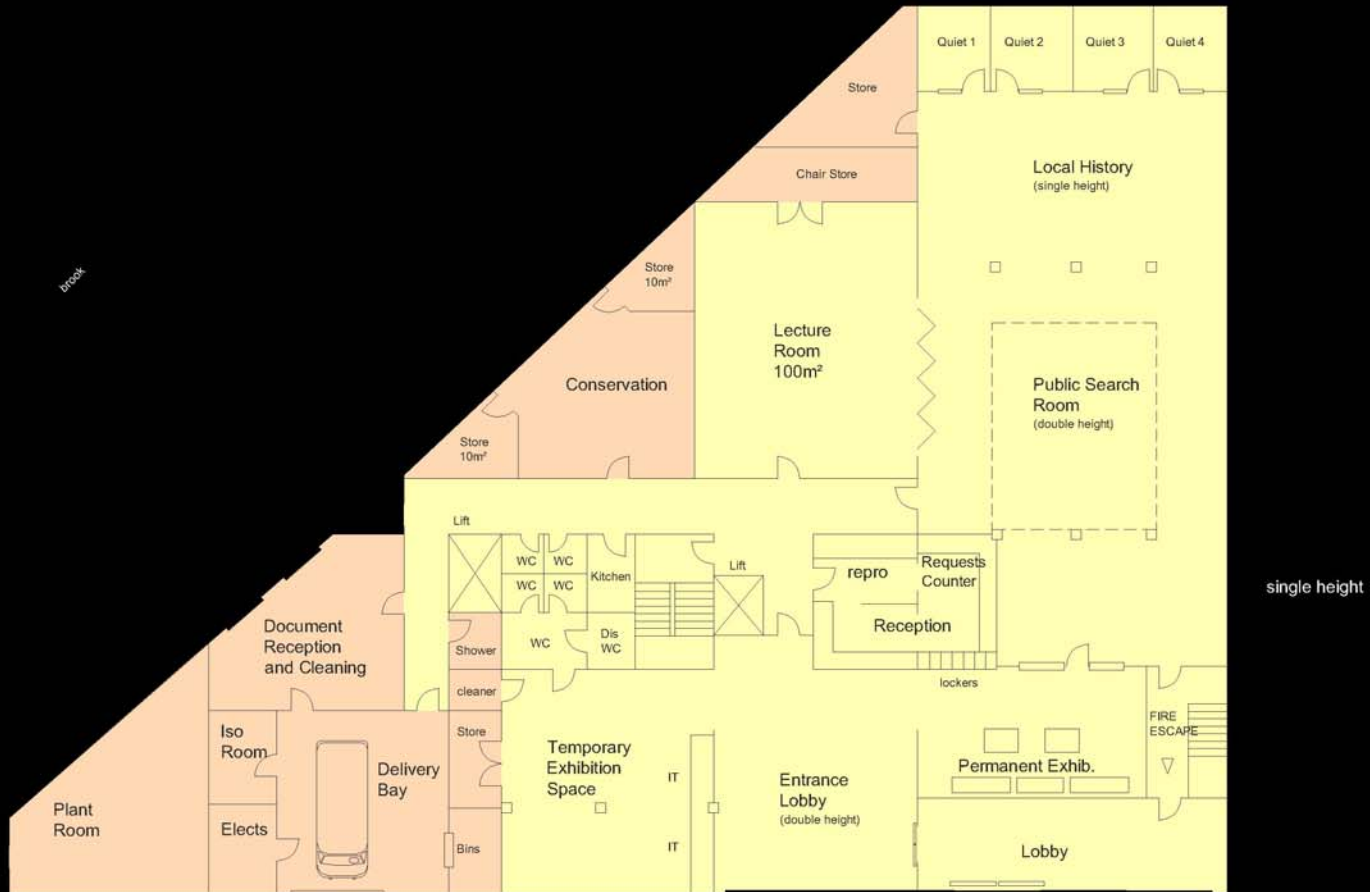




Dudley Archives and Local History Centre
Sketch Section
Corporate Property Architects

Scale 1:200

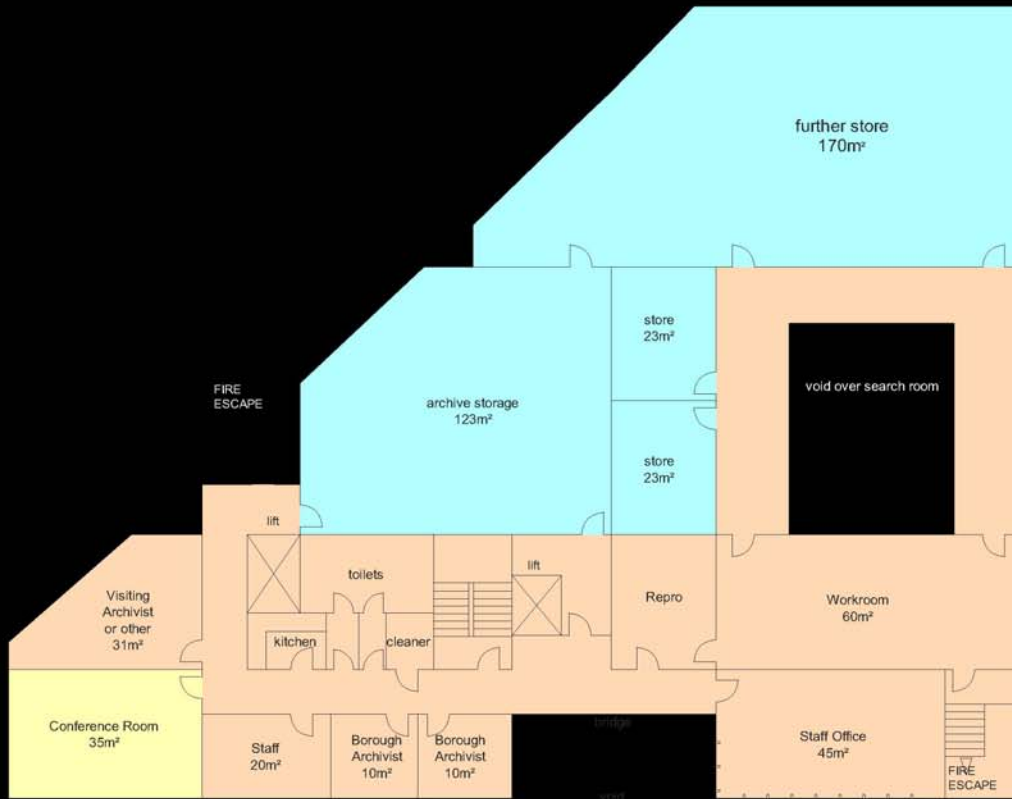
Dudley
Metropolitan Borough Council



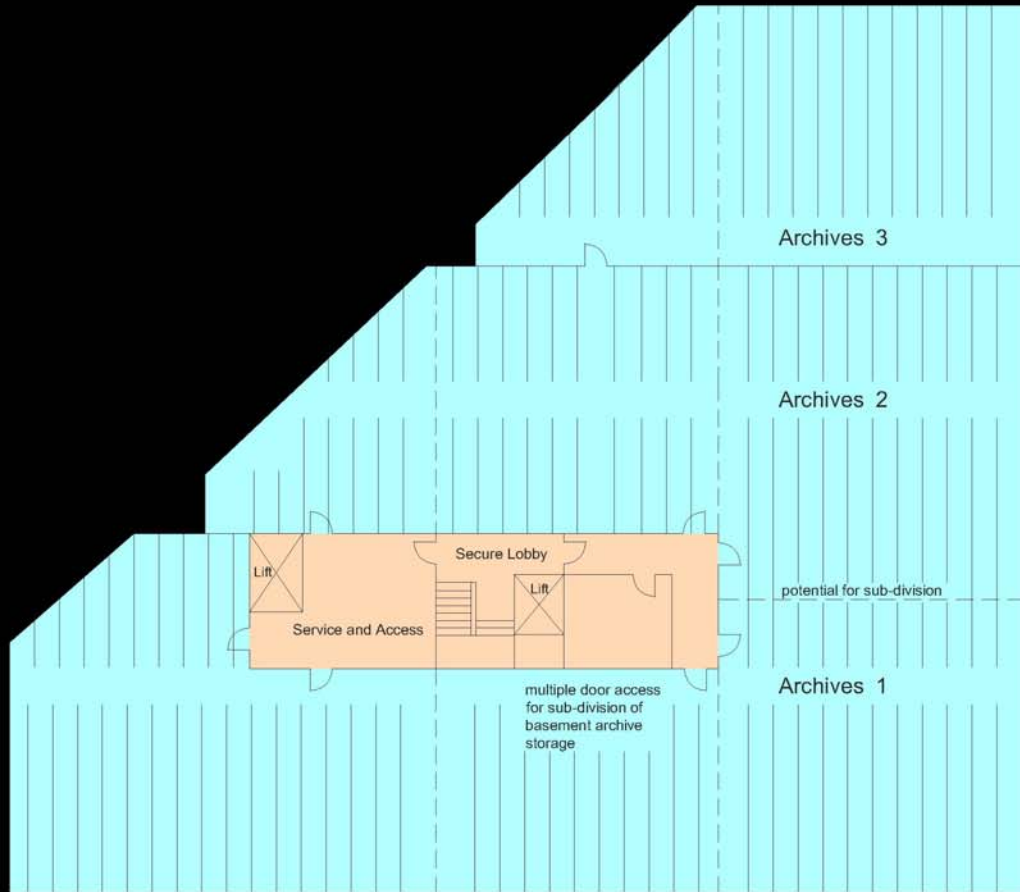
Dudley Archives and Local History sign on wall



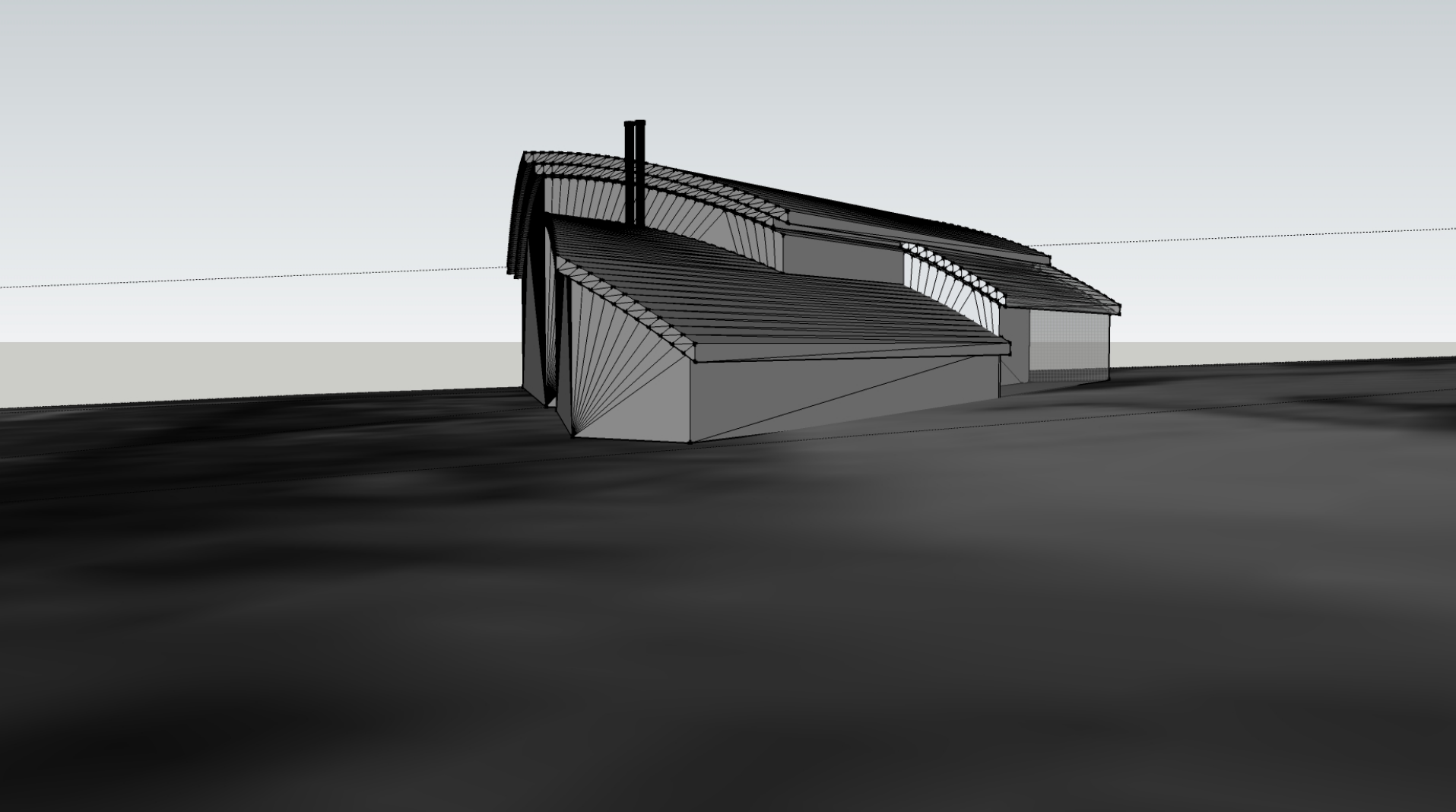
Dudley Archives Concept Scheme 2A Ground Floor Plan



**Dudley Archives Concept Scheme 2A
First Floor Plan**



**Dudley Archives Concept Scheme 2A
Lower Floor Plan**





Tipton Rd, Dudley, UK



