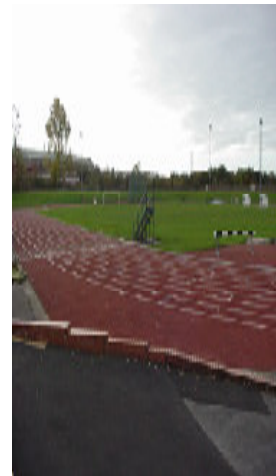


Statement of Consultation for the Draft Open Space, Sport and Recreation Provision Supplementary Planning Document

November 2006



CONTACT NAMES

Robin Whitehouse

Planning Officer – Planning Policy Section

Dudley Metropolitan Borough Council,
Directorate of the Urban Environment,
Planning Policy Section,
3 St. James's Road,
Dudley,
West Midlands,
DY1 1HZ.

Tel: 01384 81 6810
Fax: 01384 81 4141
E-mail: robin.whitehouse@dudley.gov.uk

Rupert Dugdale

Head of Design & Projects

Dudley Metropolitan Borough Council,
Directorate of the Urban Environment (DUE),
Landscape and Urban Design,
Mary Steven's Park (MSP),
Council House,
Stourbridge,
West Midlands,
DY8 2AA.

Tel: 01384 81 5538
E-mail: rupert.dugdale@dudley.gov.uk

For further information concerning the Draft Open Space, Sport and Recreation Provision Supplementary Planning Document (SPD) (November 2006) and related documents please contact:

Planning Policy Section,
Dudley Metropolitan Borough Council,
Directorate of the Urban Environment (DUE),
3 St. James's Road,
Dudley,
West Midlands,
DY1 1HZ.

Telephone: 01384 81 6810
Fax: 01384 81 4141

The Draft Open Space, Sport and Recreation Provision Supplementary Planning Document (SPD) (November 2006), the accompanying "Statement of Consultation", "Sustainability Appraisal report" and related documents can also be found on the Council's website at:

www.dudley.gov.uk/environment--planning/planning/local-development-framework

Copies of the SPD and related documents are also available from the Council's Planning reception, located at:-

- Council offices, main reception, 3 St James's Road, Dudley, West Midlands, DY1 1HZ or at
- The Dudley Council Plus reception, located at 259 Castle Street, Dudley Town Centre, Dudley, West Midlands.
- Alternatively, a reference copy can be viewed at the reception at Council offices at Mary Stevens Park (MSP), Council House, Stourbridge, West Midlands, DY8 2AA
- Reference copies can also be viewed at all main Dudley Libraries, or
- Copies can be obtained by contacting the Council's Planning Policy Section on above telephone number.

This and other Local Development Framework documents are or will be made available on request in large copy print, audio cassette, Braille or languages other than English. If you require the document in one of these formats please contact:

**Planning Policy Team, Directorate of the Urban Environment, Dudley Metropolitan Borough Council, 3 St. James's Road, Dudley, DH1 1HZ.
Tel: 01384 816967 Email: udp.plan@dudley.gov.uk**

Arabic

ستكون هذه مع بقية الوثائق لنظم العمل للتنمية المحلية متوفرة عند طلبها بطبعات مكبرة , وعلى الكاسيت , بريل , أو بلغات غير اللغة الانكليزية. فاذا كنت بحاجة لوثيقة ل احد من الاشكال المذكورة , رجاء ا أتصل بفريق التخطيط لطريقة العمل (**policy**) , مجلس ددلي المحلي , ٣ سانت جيمسز رود , دي واي ١ ١ أيج زت. التلغون: ٠١٣٨٤ ٨١٦٩٦٧ ميل udp.plan@dudley.gov.uk

Bengali

এই দলিল বা ডকুমেন্ট এবং অন্যান্য স্থানীয় উন্নয়ন বিষয়ক কাঠামো সম্পর্কিত দলিলসমূহ অনুরোধে বড় অক্ষরের লেখা বা লার্জ প্রিন্টে, অডিও কেসেটে, ব্রেইলে কিংবা অন্যান্য ভাষায় পাওয়া যাবে। আপনি যদি এই দলিলটি উপরোক্ত যে কোন মাধ্যম বা ফরমেটে পেতে চান, তাহলে দয়া করে যোগাযোগ করুন: Planning Policy Team, Directorate of the Urban Environment, Dudley Metropolitan Borough Council, 3 St. James's Road, Dudley DY1 1HZ. টেলিফোন: 01384 816967, ই-মেইল: udp.plan@dudley.gov.uk

Chinese

這及其它區域發展架構的文件可因應需要而製成大字版, 錄音帶, 盲人點字或英文以外的語文. 如你需要文件用以上其中一種形式, 請聯絡政策計劃小組 (Planning Policy Team), 城市環境保護署 (Directorate of the Urban Environment), 得利市政府, 3 St. James's Road, Dudley, DY1 1HZ. 電話: 01384 816967. 電郵: udp.plan@dudley.gov.uk

Gujarati

આ તેમજ લોકલ ડિવેલોપમેન્ટ ફ્રેમવર્કના અન્ય દસ્તાવેજો વિનંતી કરવાથી મોટા અક્ષરોમાં છાપેલા, ઓડિયો કેસેટ પર, બ્રેઈલમાં અથવા અંગ્રેજી સિવાયની બીજી ભાષાઓમાં મળી શકે છે અથવા મેળવી આપી શકાશે. જો તમને આમાંથી કોઈ સ્વરૂપમાં દસ્તાવેજ જોઈતો હોય, તો કૃપા કરીને આ સરનામે સંપર્ક કરો: Planning Policy Team, Directorate of the Urban Environment, Dudley Metropolitan Borough Council, 3 St. James's Road, Dudley DY1 1HZ. ફોન: 01384 816967 ઈમેઈલ: udp.plan@dudley.gov.uk

Punjabi

ਅਨੁਰੋਧ ਕਰਨ ਤੇ, ਇਹ ਡਾਕੂਮੈਂਟ (ਲਿਖਤ ਜਾਣਕਾਰੀ ਦਸਤਾਵੇਜ਼), ਅਤੇ ਸਥਾਨਕ ਵਿਕਾਸ ਯੋਜਨਾ (ਫਰੇਮਵਰਕ) ਸੰਬੰਧੀ ਹੋਰ ਡਾਕੂਮੈਂਟਸ ਵੱਡੇ ਪਰਿੰਟ, ਆਡੀਓ ਕਸੇਟ ਤੇ ਰੀਕਾਰਡ ਕੀਤੇ ਹੋਏ, ਬਰੇਲ ਫਾਰਮੈਟ, ਅਤੇ ਅੰਗ੍ਰੇਜ਼ੀ ਭਾਸ਼ਾ ਦੇ ਨਾਲ ਨਾਲ ਹੋਰ ਭਾਸ਼ਾਵਾਂ ਵਿੱਚ ਵੀ ਮਿਲ ਸਕਦੇ ਹਨ ਜਾਂ ਮਿਲ ਸਕਣਗੇ। ਜੇਕਰ ਤੁਸੀਂ ਕੋਈ ਡਾਕੂਮੈਂਟ ਇਨ੍ਹਾਂ ਵਿੱਚੋਂ ਕਿਸੇ ਫਾਰਮੈਟ (ਬਣਤਰ) ਵਿੱਚ ਲੈਣਾ ਚਾਹੁੰਦੇ ਹੋ, ਤਾਂ ਕ੍ਰਿਪਾ ਕਰਕੇ ਹੇਠ ਲਿਖੇ ਪਤੇ ਤੇ ਸੰਪਰਕ ਕਰੋ: ਪਲੈਨਿੰਗ ਪਾਲਸੀ ਟੀਮ, ਡਾਇਰੈਕਟਰੇਟ ਆਫ਼ ਦਿ ਅਰਬਨ ਇੰਨਵਾਇਰਨਮੈਂਟ, ਡਡਲੀ ਮੈਟਰੋਪੌਲਿਟਨ ਬਰੌ ਕਾਊਂਸਲ, 3 ਸੇਂਟ ਜੇਮਸਿਸ ਰੋਡ ਡਡਲੀ Planning Policy Team, Directorate of the urban environment, Dudley Metropolitan Borough Council, 3 St, James's Road, Dudley DY1 1HZ - ਟੈਲੀਫੋਨ ਨੰਬਰ: 01384-816967 - ਈ-ਮੇਲ ਪਤਾ: udp.plan@dudley.gov.uk

Urdu

یاد رکھیں ڈیوٹیشن فریم ورک (مقامی بہتری سے متعلق اقدامات کا ڈھانچہ) سے متعلق دوسری دستاویزات بڑے حروف کی طباعت، آڈیو کیسٹ، بریل یا انگریزی زبان کے علاوہ زبانوں میں ترجمے کی صورت میں دستیاب ہیں یا درخواست پرفراہم کی جائے گی۔ اگر آپ کو دستاویز ان میں سے کسی بھی شکل میں درکار ہے تو براہ مہربانی پلاننگ پالیسی ٹیم، ڈائریکٹوریٹ آف اربن اینوائرنمنٹ، ڈڈلی میٹروپولیٹن بورو کونسل، 3 سینٹ جیمز روڈ، ڈڈلی ڈی وی 1 1 ایچ ایچ کے ساتھ رابطہ قائم کریں۔ ٹیلیفون نمبر: 01384 816967، ای میل: udp.plan@dudley.gov.uk

1.0 Introduction

- 1.1 This “Statement of Consultation” sets out information required under Regulation 17, of the Town and Country Planning (Local Development) (England) Regulations 2004. It states that the Local Planning Authority should prepare a consultation statement when preparing Supplementary Planning Documents (SPDs).
- 1.2 The Draft Open Space, Sport and Recreation Provision Supplementary Planning Document (SPD) (November 2006) sets out the Council’s requirements for Open Space, Sport and Recreation provision in relation to new development. The Council is committed to engaging a wide and diverse range of organisations, private developers, companies, interest groups, stakeholders, hard-to-reach groups, and individuals in the preparation of the Draft Open Space, Sport and Recreation Provision SPD (November 2006). This consultation approach is a reflection of the Government’s desire “to strengthen community and stakeholder involvement in the development of local communities.”
- 1.3 This statement is intended to meet the requirements of Regulation 17 of the Town and Country Planning (Local Development) (England) Regulations 2004 and seeks to provide a clear public statement to enable the community to know how and when they will be involved in the preparation and adoption of the Draft Open Space, Sport and Recreation Provision SPD. The SPD, once adopted, will form part of the Local Development Framework (LDF) and will supplement the saved policies in the Dudley MBC Adopted Unitary Development Plan (UDP) (October 2005).
- 1.4 The statement sets out:-
 - **The programme for public consultation**
 - **Who will be consulted**
 - **How they will be consulted**
 - **How representations will be incorporated into the process**

2.0 Programme for Public Consultation

- 2.1 In order for Dudley MBC to adopt the Draft Open Space, Sport and Recreation Provision SPD, the document must be subject to a formal public consultation process. The Council has resolved that this will be for a period of six weeks. This will enable all interested parties, including statutory organisations, private developers, planning consultants/ agents, open space, sport and recreation amenity groups, hard to reach groups, and the public, to comment on the proposals.

- 2.2 The six-week formal public consultation process on the Draft Open Space, Sport and Recreation Provision SPD, and consultation period for the Sustainability Appraisal report, will commence on **Friday, 3rd November 2006 and will finish at 5:00 pm on Friday, 15th December 2006** and will enable all interested parties including statutory organisations to comment on the documents.
- 2.3 Planning Policy Statement Note 12 (PPS 12) (2004) “Local Development Frameworks” recommends that Supplementary Planning Documents (SPD’s) should be prepared taking into consideration the process of continuous community involvement. The Council’s Statement of Community Involvement (SCI) prepared as part of the Council’s Local Development Framework (LDF) under the new planning system sets out how people will be involved in planning on SPDs. It requires the Council to undertake the following consultation for the draft SPD:
- Make the documents available for review at Council offices and libraries;
 - Send the SPD to existing network of organisations;
 - Prepare press releases (including Statutory Notices);
 - Place information and documents on the Council’s Planning Website, and
 - Undertake a questionnaire survey
- 2.4 In accordance with Regulation 13 of the Environmental Assessment of Plans and Programmes Regulations 2004, the “Sustainability Appraisal report”, which accompanies the SPD, must also be made available for the purposes of consultation which is also reflected in Regulation 17 of the Town and Country Planning (Local Development) (England) Regulations 2004.
- 2.5 Any comments on the draft SPD and its accompanying Sustainability Appraisal report will need to be received by Dudley MBC by **5:00 pm on Friday, 15th December 2006**. Any representations made after this time will not be accepted.
- 2.6 Any comments should be made in writing and sent to:

Planning Policy Section,
Dudley Metropolitan Borough Council,
Directorate of the Urban Environment (DUE),
3 St. James’s Road,
Dudley,
West Midlands,
DY1 1HZ.

Telephone: 01384 81 6810
Fax: 01384 81 4141

E-mail: robin.whitehouse@dudley.gov.uk

- 2.7 When submitting your representations on the draft SPD you may also request to be notified at a specified address of the adoption of the SPD.

3.0 The Public Consultation Process: How and when will community involvement be sought?

- 3.1 The mechanisms by which community involvement will be sought for this Supplementary Planning Document (SPD) are identified in the table below and have been designed in order to maximise access to information, enable the opportunity to contribute ideas and make formal representations on formal proposals.

Type of Involvement	Details of Involvement
<p>Evidence gathering stage (initial front-loaded consultation stages prior to commencement of main public consultation in November 2006 involving revisions and updates to the emerging document).</p> <p>Internal Council departments were consulted via e-mail methods (the e-mail contained an explanatory covering consultation note and brief summary of the SPD and an initial working copy of the emerging draft document). Two face-to-face “internal” Dudley MBC officer front-loaded consultation meetings were also held on the 29th June 2006 (with representatives from Landscape, Education, and Development Control) and the 8th August 2006 (with Green Care Area Managers) with key internal stakeholders to obtain initial feedback on the emerging draft document. A front-loaded consultation presentation event was also held on the 21st September 2006 during the Council’s Environmental Task Group meeting. The ETG meetings include Dudley MBC key green space officer stakeholders and key external stakeholders such as “Ground Work Black Country” and “Primary Care</p>	<p>The Planning Policy Section has completed “internal consultation” with other Council departments including key stakeholders such as Landscape, Development Control, Parks and Green Spaces, Green Care (grounds maintenance), Education, Sport and Recreation, Community Safety, and Environmental Protection.</p> <p>As part of the initial evidence gathering period, (referred to as front loaded consultation) consultation also took place with “external” key stakeholders including locally-based Friends of Parks groups, Sport England, the National Playing Field Association (NPFA) and the English Federation of Disability Sport (EFDS).</p>

<p>Trust (PCT) Steps to Health” representatives.</p> <p>Consultation with “external” key stakeholders was achieved by forwarding a consultation e-mail (which contained an explanatory covering consultation note and brief summary of the SPD and an initial working copy of the emerging draft document). In addition, face-to-face consultation took place with locally-based Friends of Parks Groups as part of a consultation meeting held on the evening of the 26th September 2006. Friends of Parks groups were also consulted on the 1st August 2006 by e-mail methods referred to above. Those Friends Groups without e-mail access were consulted by postal methods on the 1st August 2006. This involved forwarding a consultation letter and a paper-copy of the emerging draft SPD.</p>	
<p>Production Stage Document available for inspection at local planning authority offices during set consultation period and notice put up in reception to highlight consultation.</p> <p>Reference copies for public inspection were also available at all main Dudley Libraries.</p>	<p>Receptions at Council offices, 3 St James’s Road, Dudley, West Midlands; Dudley Council Plus reception, located at 259 Castle Street, Dudley Town Centre, Dudley, West Midlands, and Council offices at Mary Stevens Park (MSP), Stourbridge, West Midlands. Documents to include: - Draft SPD - Draft Sustainability Appraisal - Statement of Consultation - Copies of Response Form</p>
<p>Production Stage Letters to statutory bodies and other interested parties</p>	<p>List of those who the SPD consultation letter and response form have been sent to can be found at the end of this document.</p>
<p>Production Stage Council’s Planning Web-site under the below link: www.dudley.gov.uk/environment--planning/planning/local-development-framework</p>	<p>Relevant documents in word and pdf formats placed on Council’s planning web-site: - Draft SPD - Draft Sustainability Appraisal - Statement of Consultation - Response Form</p>

Production stage Press Release	Press release to local media at beginning of the November 2006 public consultation period. Will cover – what the SPD is about; why you should respond, where to find consultation documents; consultation time period; how to respond.

4.0 How will Comments and Responses on the Draft SPD be incorporated into the process?

- 4.1 Dudley MBC will formally record any written representations on the Consultation Draft SPD received within the specified consultation period referred to above. Following the closure of the six-week public consultation period, all written responses will be summarised and recorded in a single document which will set out a “Summary of the main issues raised” and “How those issues raised have been addressed in the SPD”.
- 4.2 This document will be titled “Summary of Consultations received to Dudley MBC’s draft Open Space, Sport and Recreation Provision SPD and the Council’s responses to the Consultations.”

5.0 Who is being consulted, when and how?

Private house builders, commercial property developers and land holding companies

- 5.1 The Draft Open Space, Sport and Recreation Provision Supplementary Planning Document (SPD) (November 2006) has been widely publicised to a range of private developers. The Council has been careful not to focus solely on large-scale, volume private house builders as part of its SPD developer consultation. In order to achieve more wide-ranging, robust and effective consultation, the Council has made special efforts to include small-scale private house builders (e.g. developers who typically progress schemes less than 25 residential units) within its SPD consultation. Local private house builders based within Dudley, and nationwide, volume house-builders have all been included within the consultation. The Council has also extended its

consultation to include a proportion of developers who have submitted residential planning applications to the Council's Development Control Section during the last four years. The Council has not focused exclusively on the house building industry as part of its SPD developer consultation as the Council does not believe that this would offer a thorough consultation approach for this particular SPD. Commercial property developers and land holding companies have therefore been included in order to reinforce the effectiveness and thoroughness of the consultation.

- 5.2 Consultation method used for this group: The Council forwarded a consultation letter (which contained details of the direct Council website hyper link highlighting where all the draft SPD documents can be found) and Response Form through the post to all developers featured within the SPD consultation list.

Other organisations and groups (including those representing “hard to reach” and under-represented groups and organisations)

- 5.3 It is recognised that some sectors of the community may be more difficult to engage in the participation process. These “hard to reach” groups include young people, disabled people, and those from ethnic minorities. Special efforts will be made to include these groups within the Council's Draft Open Space, Sport and Recreation Provision SPD (November 2006) consultation in order to ensure that their views are considered and not neglected within the consultation process. A diverse range of organisations and interests groups have subsequently been consulted in order to achieve thorough, balanced, and effective consultation.
- 5.4 Included within the SPD consultation are ethnic minority organisations and groups, Dudley Racial Equality Council, places of worship, disabled sports interest groups, young persons organisations, unemployment groups, and mental health organisations. Other groups consulted include, the local Police and West Midlands Planning Aid Service. As previously stated, a key objective has been to target and engage a wide range of under-represented and “hard to reach” groups who would not normally participate in this type of consultation exercise.
- 5.5 Consultation method used for this group: The Council forwarded a consultation letter (which contained details of the direct Council website hyper link highlighting where all the draft SPD documents can be found) and Response Form through the post to these groups.

Health organisations and health charities

- 5.6 The importance of physical exercise, participation in sport and outdoor recreation in promoting healthy lifestyles, building healthy communities, improving mental well-being, reducing the risk of coronary heart disease, stroke, obesity and for reducing health care costs, is now

recognised by the Government and a range of specialist health care organisations. This aspect is reinforced in national planning guidance on open space set out in Revised Planning Policy Guidance Note 17 (PPG 17) (July 2002) "*Planning for Open Space, Sport and Recreation*". Given the clear health links and benefits of open space, participation in sport and outdoor recreation, a number of health care and specialist research organisations and charities have been included within the draft SPD consultation.

- 5.7 Consultation method used for this group: The Council forwarded a consultation e-mail (which contained an attached Response Form, consultation letter, and direct hyper-link highlighting where all the Council's draft SPD documents can be found on the Council's planning web-site) to health organisations featured within the SPD consultation list. E-mail consultation methods were chosen for this particular group given that the Council already had a full and up-to-date e-mail address list for these organisations. Electronic consultation was therefore considered an easier and more appropriate method to use.

Planning Consultants, agents, Landscape Architects, Chartered Surveyors, specialist sport and leisure consultants

- 5.8 A varied and wide-range of national UK planning consultants and locally-based planning consultants have been consulted. A proportion of local agents who regularly progress residential schemes through the Council's Development Control Section and operate within the Dudley area have also been included within the consultation in order to achieve more thorough and robust consultation. In addition, specialist sport and outdoor recreation planning consultancies and Landscape Architects have also been consulted.

- 5.9 Consultation method used for this group: The Council forwarded a consultation e-mail (which contained an attached Response Form, consultation letter, and direct hyper-link highlighting where all the Council's draft SPD documents can be found on the Council's planning web-site) to Planning Consultants, Landscape Architects and local agents featured within the SPD consultation list. E-mail consultation methods were chosen for this particular group given that the Council already had a full and up-to-date e-mail address list for all planning consultants/ agents/ architects who in the Council's view needed to be consulted for this draft SPD. Electronic consultation was therefore considered an easier and more appropriate method to use.

Neighbouring and nearby local authorities and Parish Council's

- 5.10 The Council has consulted the Planning Policy/ Local Plans Sections of all adjoining local authorities which border the Dudley Metropolitan Borough. In addition, in order to achieve more thorough consultation, the Council has extended its SPD consultation to include local authorities located well beyond the Council's administrative boundary.

Adjoining Parish Council's were also consulted. As part of its consultation approach the Council has been careful to target both urban and rural local authorities so a more balanced and wide-ranging consultation approach can be achieved, reflecting urban areas as well as rural.

- 5.11 Consultation method used for this group: The Council forwarded a consultation letter (which contained details of the direct Council website hyper link highlighting where all the draft SPD documents can be found) and Response Form through the post to neighbouring local authorities and Parish Council's featured within the SPD consultation list.

Community Associations

- 5.12 Throughout, the Council has made special efforts to ensure that "hard to reach" groups feature prominently throughout this SPD consultation. The Council has consulted Dudley Community Partnership (DCP), which is a lead organisation representing all Tenants and Residents Groups and other locally-based community groups within the Dudley Metropolitan Borough. The draft SPD documents were then distributed by this lead organisation to all relevant community groups based within the Borough. The Council has also consulted locally-based Friends of Parks Groups which operate within the Borough.

- 5.13 Consultation method used for these groups: The Council forwarded paper copies of Response Forms, consultation letters, and copies of the draft SPD through the post to the Dudley Community Partnership (DCP). Locally-based Friends of Parks Groups were consulted directly by e-mail methods. This involved forwarding an electronic consultation letter, Response Form, copy of the draft SPD document, and direct hyper-link highlighting where the SPD documents can be found on the Council's planning web-site to lead contacts within each of the Borough's Friends of Parks Groups. E-mail consultation methods were chosen for the Friends of Parks Groups given that the Council already had a full and up-to-date e-mail address list for all of the locally-based Friends of Parks Groups and it was therefore considered an easier and more appropriate method to use.

Nature Conservation groups and bodies

- 5.14 In addition to their outdoor recreational importance, many open space sites within urban areas also provide important habitats for nature conservation and biodiversity. A number of specialist nature conservation groups and organisations have therefore been consulted as part of this draft SPD.
- 5.15 Consultation method used for this group: The Council forwarded a consultation letter (which contained details of the direct Council web-

site hyper link highlighting where all the draft SPD documents can be found) and Response Form through the post to these groups.

Specialist outdoor sport and open space contractors/ advisors, sports pitch construction, design and maintenance contractors, Multi Use Games Area contractors, pitch renovation.

- 5.16 Companies which specialise in the construction, design, renovation, management and maintenance of outdoor sports field surfaces (including playing field pitch drainage/ maintenance) have been consulted as part of this draft SPD as they remain an integral group who need to be included within the consultation. The Council has also extended its consultation approach to include companies which specialise in commercial landscape, turf management and the construction of equipped children's play areas.
- 5.17 Consultation method used for this group: The Council forwarded a consultation letter (which contained details of the direct Council website hyper link highlighting where all the draft SPD documents can be found) and Response Form through the post to these groups.

Statutory Consultees

- 5.18 Statutory consultees are those agencies and organisations that the Council is required to involve as a result of central government guidance. Part of their role is to ensure the Supplementary Planning Documents are in accordance with Government guidance,
- 5.19 Consultation method used for this group: The Council forwarded paper copies of the draft Open Space, Sport and Recreation Provision Supplementary Planning Document (SPD) (November 2006), accompanying Sustainability Appraisal and Statement of Consultation documents, along with a Response Form and consultation letter through the post to all Statutory Consultees featured within the SPD consultation list.

List of Consultees

- 5.20 It must be noted that this is not an absolute and exhaustive list and the Council reserves the right to consult other bodies at the appropriate time.

Communities and Stakeholders Groups

- 5.21 The following organisations and individuals with an interest in the built environment and open space, sport and recreation will be formally consulted on the Draft Open Space, Sport and Recreation Provision SPD (November 2006).

Statutory Consultees

Advantage West Midlands (AWM)
Birmingham and the Black Country Health Authority
Campaign for the Protection of Rural England (CPRE) (Staffordshire)
The Countryside Agency (West Midlands Region)
English Heritage (West Midlands Region)
English Nature (The North Mercia Team) (Shrewsbury, Shropshire)
The Environment Agency (Shrewsbury, Shropshire)
The Environment Agency (Midlands Region Office) (Solihull)
Government Office for the West Midlands (GOWM)
Home Builders Federation (HBF) (Birmingham)
Home Builders Federation (HBF) (London)
National Playing Field Association (NPFA) (London)
West Midlands Regional Assembly (Regional Spatial Strategy (RSS)
Co-ordinator)
Sport England (West Midlands)

Non-Statutory Consultees

Private developers (including small, medium and large scale volume house builders), land holding companies and commercial property developers

A & J Mucklow PLC
AMEC Developments Ltd
Arthur Morgan and Son Ltd (House Builders and Developers)
Barratt Homes (West Midlands) Ltd
Bellway Homes (West Midlands) Ltd
Bellmark Developments Ltd
Bloor Homes (Tamworth) Ltd
Bovis Homes (Central Region)
Bryant Homes Central (West Midlands)
CALA Homes (Midlands) Limited
Castlemore
City Village Ltd (Wolverhampton, West Midlands)
Cora Developments Ltd
Cordwell Property Plc
Countryside Properties Ltd (Essex)
Countrywide Homes Limited (Solihull)
Crest Nicholson Residential (Midlands) Ltd
Crosby Homes Ltd (Birmingham)
David Payne Homes Ltd (Worcestershire)
David Wilson Homes Ltd (West Midlands)
Dudley Estates Ltd (West Bromwich, West Midlands)
Fairclough Homes (Midlands Division) Ltd
Fresh Space Developments Ltd
Gablerose Developments Ltd (Birmingham)
George Wimpey (West Midlands) Ltd

Hadlington Brothers Limited (Halesowen, West Midlands)
 Hagley Homes Ltd
 HILLMAC Homes Ltd
 J.P. Horgan Builders Ltd (Stourbridge, West Midlands)
 Home Builders Federation (HBF) (London)
 Home Builders Federation (HBF) (Midland Region) (Birmingham)
 Kendrick Homes Ltd (Walsall, West Midlands)
 Kings Oak Homes (West Midlands) Ltd
 K. P. Properties Ltd
 Laing Homes (Midlands) plc
 Lockett Homes Ltd
 London & Cambridge Properties (LCP) (Kingswinford, West Midlands)
 Lorien Homes Ltd
 Lovell Homes (Birmingham)
 Manor Abbey Farm (Halesowen, West Midlands)
 MAR City Developments Ltd
 McCarthy & Stone (Developments) Ltd
 M & E Group Ltd (Stourbridge, West Midlands)
 Miller Homes (West Midlands) Ltd
 St. Modwen Developments Ltd (Birmingham)
 Morris Homes (West Midlands) Ltd
 Pegasus Retirement Homes plc
 Persimmon Homes (West Midlands) Ltd
 Projects 2000 Ltd (Birmingham)
 R & D Aggregates Limited (Worcestershire)
 Redrow Homes (West Midlands) Limited
 Revelan Group (Oldbury, West Midlands)
 Richardson Developments Ltd (Oldbury, West Midlands)
 Richborough Estates (Birmingham)
 Selbourne Homes Ltd
 Staffordshire Land Management Ltd
 Taylor Woodrow plc (Solihull)
 Temple Gate Properties Ltd (Birmingham)
 Trinpley Estates Ltd
 Urban Splash (Developments Ltd) (Manchester)
 Welcome Homes Plc (Walsall, West Midlands)
 Westbury Homes (Holdings) Ltd (Wolverhampton)
 Wilson Bowden Developments (Leicestershire)

Other external organisations. Including “hard to reach” groups, local sports clubs, recreation and open space organisations, children’s play organisations, ethnic minority organisations, sports disability groups, young/ elderly persons groups, proportion of local borough schools.

African Caribbean Befriending Service (Dudley)
 Age Concern Dudley,
 Amblecote Christian Centre (Stourbridge)
 Asian Women’s Centre (Dudley),
 Asylum and Immigration Resource Team (Handsworth)

Bangladesh Youth Organisation (Walsall)
 Beacon Centre for the Blind (Dudley)
 Bengali Association (Midlands),
 Black and Asian Disability Group (Walsall)
 Black Country Sports Partnership (Tipton Sports Academy)
 Blakenhall Unemployment Scheme (Wolverhampton)
 Brierley Hill Primary School (Brierley Hill)
 British Bangladeshi Council (Walsall)
 British Paralympic Association (London)
 Brook in Dudley (*young persons advisory group*)
 Central Council of Physical Recreation (CCPR) (London)
 Cerebral Palsy Sport (Nottingham)
 Children's Play Council (London)
 The Coseley School (Coseley, near Dudley)
 Cradley Town Football and Social Club (Dudley)
 The Dell Sports Stadium (Brierley Hill)
 Dudley Canal Trust Ltd (Dudley)
 Dudley Children's Fund (Brierley Hill)
 Dudley Community R.O.U.T.E.S (*young persons & families advisory group*)
 Dudley Disabled Living Centre
 Dudley Mind,
 Dudley Muslim Association
 Dudley Racial Equality Council
 English Federation of Disability Sport (EFDS) (Stoke-on-Trent)
 Gornal Athletic Peacock Club (Dudley)
 Green Flag Award Scheme (Liverpool)
 Green Space (Reading)
 Green Space London,
 Ghausia Jamia Welfare Association,
 Halesowen Harriers Football Club (Powerleague)
 Hillcrest School (Netherton, Dudley)
 St. Joseph RC Primary School (Dudley)
 Kingswinford Grammar School (Kingswinford)
 Mencap (Brierley Hill)
 Nacro (Asylum Seekers & Refugee Centre for Health) (Birmingham)
 National Playing Fields Association (NPFA) (London)
 National Playing Fields Association (NPFA) (Fields Office, Coventry)
 National Society of Allotment and Leisure Gardeners (South West Region),
 Open Spaces Society (Oxfordshire)
 Oxford Brookes University (Department of Planning)
 Pakistan Welfare Association, (Handsworth)
 Park it (celebrating people in parks) (Reading)
 Penderels Trust (Birmingham Disability Resource Centre)
 Phoenix Centre for Children With Special Needs (Fairhaven School, Kingswinford)
 Playlink (London)
 Redhill School (Stourbridge)
 Refugee Council (West Midlands Office) (Birmingham)

Safe Neighbourhood Unit (Sutton Coldfield)
Scope (Midlands Community Team, Shrewsbury)
Sikh Community & Youth Service (Handsworth)
Somali Disability & Elderly Support Group (Birmingham)
Sport England (West Midlands),
Sport England (London)
Stourbridge Lawn Tennis and Squash Club
Sure Start Kates Hill & Sledmere (Dudley)
Sure Start Brierley Hill,
UK Athletics (Birmingham)
Walsall Resource Centre for Children with Disabilities
West Midlands Planning Aid Service (Birmingham)
Windsor High School (Halesowen)
Wollaston Lawn Tennis Club
Wolverhampton Mencap
Women's Development Officer Dudley Women's Forum
Women's Sports Foundation (London)
West Midlands Police (Dudley Police Station)
West Midlands Police (Brierley Hill Police Station)
Youth Sport Trust (Loughborough University, Leicestershire)

Health organisations/ specialist disease research and prevention organisations/ health charities.

British Heart Foundation (London)
Cancer Prevention Research Trust (London)
Cancer Research UK (London)
Chinese National Healthy Living Centre (Midlands)
Diabetes UK (London)
Mind (London)
National Obesity Forum (Nottingham)
Public Health Directorate (Dudley)
The Stroke Association (Walsall)
Well Child (Cheltenham)
UK Public Health Association (London)

Specialist outdoor sport and open space contractors/ advisors, sports pitch construction, design and maintenance contractors, Multi Use Games Area contractors, pitch renovation.

Avonmore Associates (Warwickshire)
Agripower Ltd (Hurley)
Alan Addis Associates (Cannock)
DOE (Essex)
J & K Sportsfields Ltd
D. W. Shotton Landscapes (Shropshire)

Nature Conservation groups and bodies

Bat Conservation Trust (London)

British Association of Landscape Industries (BALI) (Warwickshire)
British Conservation Trust Volunteers (BCTV) (Black Country)
BTCV Dudley Green Health
British Conservation Trust Volunteers (BCTV) (Birmingham)
Butterfly Conservation (Dorset)
The Forestry Commission (England) (National office, Cambridge)
Herpetological Conservation Trust (Dorset)
Mammal Society (London)
National Biodiversity Network (Newark)
National Wildflower Centre (Liverpool)
Pensnett Wildlife Group (Wordsley, Stourbridge)
Royal Society for the Protection of Birds (RSPB) (Central England Regional Office)
West Midlands Biodiversity Partnership (Birmingham)
Wildlife Trust for Birmingham and the Black Country (Birmingham)

Other: Including Regeneration bodies

Black Country Chamber & Business Link
Black Country Investment (BCI)
Brierley Hill Regeneration Partnership
Commission of Built Architecture and Environment (CABE)
Development Trusts Association (the community-based regeneration network)
English Partnerships (Birmingham)
Groundwork Black Country Trust Ltd
The Landscape Institute
Royal Institute of British Architects (RIBA)
Royal Institute of Chartered Surveyors (RICS)
Sustainable Development Commission (London)

Other: (Local public libraries)

All main Dudley Libraries

Neighbouring and nearby Local Authorities and Parish Council's

Birmingham City Council
Bridgnorth District Council
Bromsgrove District Council
East Staffordshire Borough Council
Hagley Parish Council
Hinley Parish Council
Hunington Parish Council (Bromsgrove)
Kinver Parish Council
Sandwell Metropolitan Borough Council
Solihull Metropolitan Borough Council
South Staffordshire Council
Staffordshire County Council
Swindon Parish Council (South Staffordshire)

Walsall Metropolitan Borough Council
Wolverhampton Metropolitan Borough Council
Wombourne Parish Council
Worcestershire County Council

**Planning Consultants, Agents, Surveyors, Landscape Architects,
specialist sport and leisure consultants**

Aspect Landscape Planning Ltd (Banbury)
ATIS REAL Weatheralls (Birmingham)
Atkins Consultants Ltd (Birmingham)
Atkins Landscape Architects & Urban Design (Epsom)
Barton Willmore Planning Partnership (Solihull)
Bell Fischer Landscape Architects (Surrey)
Bigwood Chartered Surveyors
Bowles, Whittick & Young (Dudley)
Carter Jonas Planning Consultants (Cambridge)
CDS Development Services Ltd
Checkley & Co. Chartered Surveyors (Birmingham)
Community First Partnership (Worcestershire)
Cushman & Wakefield Healey & Baker
David Wilson Partnership (Landscape Architects) (Birmingham)
Drivers Jonas (Birmingham)
Garfield Davis Architectural Consultants (Dudley)
Gould Singleton Architects (Halesowen)
GVA Grimley (Birmingham)
Humberts Leisure Consulting (London)
KBA Architects Limited (Stafford)
MFL Design (Halesowen)
Nicol Jones Lomax Landscape Architects (Shropshire)
Pegasus Planning Group (Sutton Coldfield)
RAE Sport and Leisure Consultants (Bedford)
RPS Planning Consultants (Birmingham)
RSM Design/ Landscape Architects (Shropshire)
Savills Property Consultants (Birmingham)
Stansgate Planning Consultants (Stratford-Upon-Avon)
Tweedale Planning Consultants Ltd (Wolverhampton)
Urban Play Solutions (Solihull)

**Local Tenants & Residents Associations (including those
representing “hard to reach” and under-represented groups)**

Afro Caribbean Community Association (Walsall)
Citizens Advice Bureau (Dudley)
DOSTI
Dudley Community Partnership
Dudley CVS
Dudley Federation of Tenants Associations
Friends of Parks Groups (located within Dudley Metropolitan Borough)
Guru Nanak Community Centre (West Bromwich)

Jamia Masjid Ghausia Community Centre (Walsall)
Russells Hall Neighbourhood Centre (Dudley)
Valley Road Youth & Community Centre (Stourbridge)
Wordsley & District Community Association (Stourbridge)
Yemeni Community Association (West Bromwich)

6.0 Commitment to Reporting Back

- 6.1 It is important that respondents to the Draft Open Space, Sport and Recreation SPD (November 2006) are kept informed about the progress of the SPD. To that end, all respondents who have stated that they wish to be notified will be informed when the SPD is formally adopted by the Council.