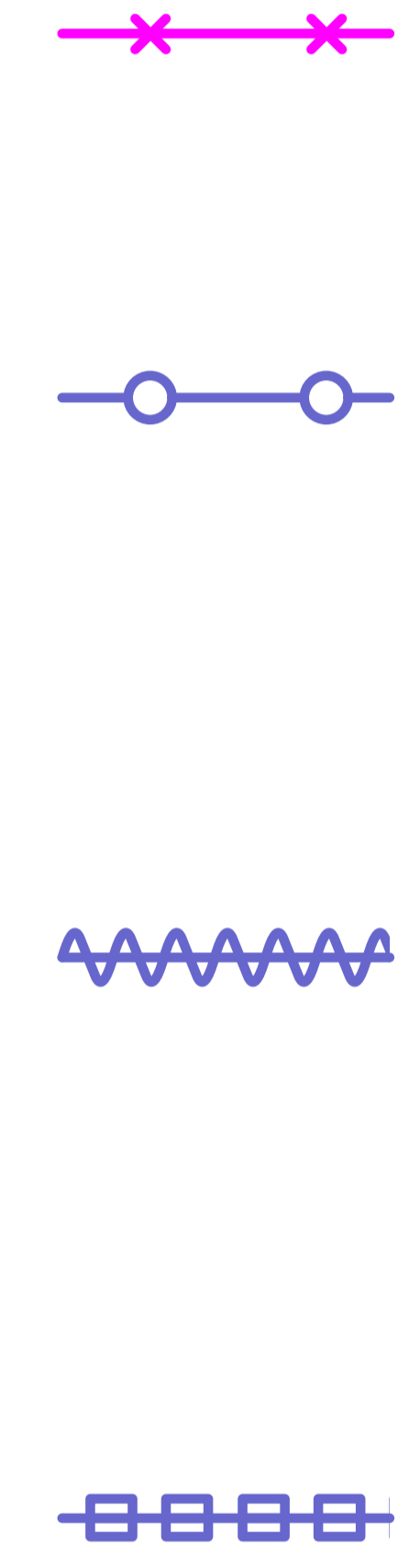
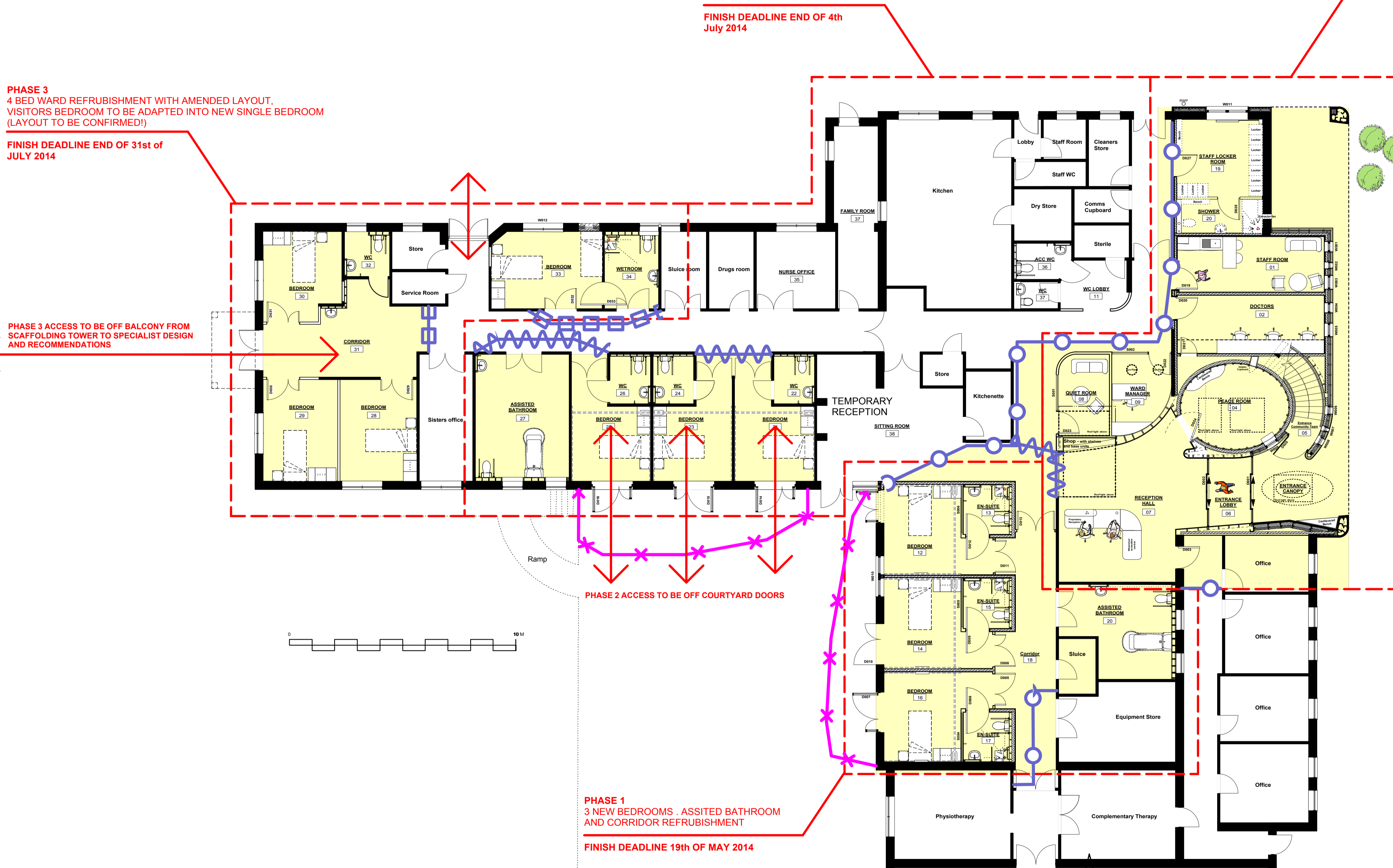


**PHASE 3**  
4 BED WARD REFRUBISHMENT WITH AMENDED LAYOUT.  
VISITORS BEDROOM TO BE ADAPTED INTO NEW SINGLE BEDROOM  
(LAYOUT TO BE CONFIRMED!)  
**FINISH DEADLINE END OF 31st of JULY 2014**

**PHASE 2**  
3 BEDROOMS AND ASSITED BATHROOM REFRUBISHMENT  
**FINISH DEADLINE END OF 4th July 2014**

**PHASE 1**  
2 STORY EXTENSION  
**FINISH DEADLINE END OF 14th of Aug 2014**



Services, M&E and drainage to be kept running at all times.

Site fire strategy to be update for each Phase

Rev	Description	By	Date	Rev	Description	By	Date
G	Additional external door added	WR	17/07/13	N	Drawing updated to revised Specbus Program	WR	09/06/14
F	Status changed to TENDER. Existing wells marked	WR	30/05/13	M	Visitors bedroom converted into new single bedroom, existing ensuite and linen cupboard removed.	WR	28/04/14
E	Issued for planning	WR	10/05/13	L	Phasing amended follow meeting on the 7th of april	WR	09/04/14
D	New access to first floor.	WR	30/04/13	K	Status changed to CONTRACT	WR	15/10/13
C	Bedroom and community team refurbishments omitted	WR	31/10/12	J	Existing sterile store door location retained	WR	02/08/13
B	Soilboxes in quiet room and managers office	WR	25/10/12	H	Updated to Plans	WR	02/08/13

**0599/002 (N)** CONTRACT  
PROJECT AND DRAWING NO. STATUS  
**MARY STEVENS HOSPICE**  
CLIENT

Danks Warehouse  
Diglis Basin  
60 Diglis Road  
Worcester  
WR5 3BW  
tel 01905 358626

**kke**  
architects