

Select Committee on Lifelong Learning – Wednesday 8 March 2006

Report of the Director of Children's Services

Performance Assessment – Children's Social Care

Purpose of Report

1. To inform and advise Select Committee on the Performance Assessment Framework for Children's Social Care.

Background

2. The indicators of the Personal Social Services (PSS) Performance Assessment Framework (PAF) provide a tool for investigating Social Services performance, allowing comparison between councils and over time and providing a statistical overview of performance at year end .
3. The Performance Assessment Framework is designed to help improve the services that people receive by:
 - Helping councils to develop their own performance management arrangements, to compare their performance with that of others, and to make a contribution to the Government's objectives and priorities by improving their own performance
 - Ensuring that social care issues are appropriately addressed in Best Value Performance plans
 - Ensuring that the corporate management and political scrutiny arrangements promote better Social Services that contribute to community well-being
 - Ensuring that councils work effectively with partners to address the wider health and social care delivery issues

- Ensuring that councils work effectively with other local Government departments and external agencies
 - Assessing council progress in implementing the Government's policies for social care, in meeting national targets and in achieving Best Value
 - Identifying and promoting good practice
 - Identifying councils that are performing poorly and ensuring that they take action to improve
4. The Commission for Social Care Inspection (CSCI) assumed responsibility for the development of the PAF indicators from April 2004 as the independent body and inspectorate for social care in England. CSCI uses the indicators as part of the evidence to inform their assessments of councils, to summarise performance strengths and areas for development, and highlight priorities for the year ahead. However the indicators should not be seen in isolation from other performance data and assessment is increasingly being carried out with other agencies to reflect the importance of partnership, as evidenced by the Annual Performance Assessments (APA) and the Joint Area Review.
 5. Performance against each indicator is banded to give a general indication of where performance should be and where future improvements should be concentrated. In the main these range from
 - (investigate urgently) to ●●●● (very good).
 6. A list of PAF indicators for Children's Social Care and current performance at the end of Quarter 3 (December 05) are attached as Appendix 1 and 2. Based on a traffic light system Members will note that there are 3 indicators which are of concern. For each indicator there is an improvement plan with targeted activity and monthly monitoring through the Children's Social Care Management Team. Responsibility for each indicator is assigned to a lead officer at Head of Service level.
 7. Further work has been undertaken to group the indicators to reflect the Every Child Matters outcome framework and this report particularly focuses on performance under *Staying Safe* to provide an example of the PAF indicators and associated measures for this outcome.

8. Current performance and comparative and trend data for *Staying Safe* is attached at Appendix 3.

Finance

9. There are no direct financial implications arising from this report. However the PAF is used to inform future practice to enable the setting of objectives and priorities and to determine resource allocation.

Law

10. The Children Act 1989 and Children Act 2004 provide the legislative framework for the delivery of children's social care services. The integrated inspection requirements are laid out in the Children Act 2004.

Equality Impact

11. The assessment and inspection of children's social care services provides councils with knowledge and information on how they are responding to children in need, including those who need protection and those who are looked after to assist in improving services and to ensure that services are improving outcomes for the most vulnerable children in our community.

Recommendation

12. Committee note the report and determine the format for future performance reporting for Children's Social Care.



John Freeman
Director of Children's Services

Contact Officer: Pauline Sharratt
Assistant Director – Children's Social Care
Tel: 01384 815807
Email : pauline.sharratt@dudley.gov.uk

APPENDIX 1

Performance Assessment Framework (PAF) **Indicators for Children's Social Care**

PAF A1	Stability of placements of children looked after
PAF A2	Educational qualifications of children looked after
PAF A3	Re-registrations on the Child Protection Register
PAFA4	Employment, education and training for care leavers
PAF B7	Children looked after in foster placements or placed for adoption
PAF B8	Cost of services for children looked after
PAF C18	Final warnings/reprimands and convictions of children looked after
PAF C19	Health of children looked after
PAF C20	Reviews of child protection cases
PAF C21	Duration on the Child Protection Register
PAF C23	Adoptions of children looked after
PAFC24	Children looked after absent from schools
PAF C63	Participation of looked after children in review
PAF C64	Timing of core assessments
PAF C68	Timeliness of reviews of children looked after
PAFC69	Distance of children newly looked after are placed from home
PAF D35	Long term stability of children looked after
PAF E44	Relative spend on family support
PAF E45	Ethnicity of children in need
PAF E67	Children in need with disabilities

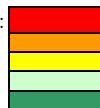
Children's Social Care Performance Assessment Framework Indicators 2005/06

PAF AREA	PAF Indicator	Best Value	Data Source	Definition	Actual 2003/04	Actual 2004/05	Actual 2005/06	Qtr3 2005/06	Target 2005/06	PAF Star Rating 2004/05	Performance Commentary
National Priorities & Strategic Objectives	A1	BV49	SSDA 903	The percentage of children looked after at 31 March with three or more placements during the year.	11.4%	13.1%		10.4%	11.0%	5● = 0<16.01 2● = 16.01<20 1● = 20<100	NPG Target - no more than 16% 2004/05 Performance Rating 5 ● 2003/04 Performance Rating 5 ●
	A2	BV50	SSDA 903	The percentage of young people leaving care aged 16 or over with at least 1 GCSE at grade A*-G or a GNVQ.	45.7%	56.8%		61.1%	57.0%	1● = 0<25 2● = 25<45 3● = 45<50 4● = 50<70 5● = 70<100	Optimum 70% or above. Performance Rating 2004/05 4 ● Performance Rating 2003/04 3 ●
	A3		CPR3	The percentage of children registered during the year on the Child Protection Register who had been previously registered.	8.1%	14.0%		12.6%	10.5%	Low 1● = 0<3 2● = 3<6 3● = 6<8 4● = 8<10 5● = 10<15 High 1● = 24<100 2● = 20<24 3● = 17.21 <20 4● = 15<17.21	Optimum range 10-15% 2004/05 Performance Rating 5 ● 2003/04 Performance Rating 4 ●
	A4		SSDA 903	The percentage of those young people who were looked after on 1 April in their 17th year (aged 16), who were engaged in education, training or employment at the age of 19.	0.3	0.5		0.6	0.5	1● = 0<0.4 2● = 0.40<0.5 3● = 0.5<0.6 5● = 0.6+	Optimum range 0.6 or above Performance Rating 2004/05 2 ● Performance Rating 2003/04 1 ● Note PAF banding based upon Dudley Value of previously looked after young people (n%) as a % of the % of all Dudley 19 year olds in employment, education, or training (90%).
Cost and Efficiency	B7		SSDA 903	Of children looked after at 31 March (excluding those placed with parents) the percentage who were in foster placements or placed for adoption.	83.9%	83.3%		84.5%	84.0%	Low 1● = 0<55 2● = 55<70 3● = 70<80 4● = 80<85 5● = 85<90 High 1● = n/a 2● = 95<100 3● = n/a 4● = 90<95	Optimum range 85-90% 2004/05 Performance Rating 4 ● 2003/04 Performance Rating 4 ●
	B8		PSSEX1	Average gross weekly expenditure per looked after child in foster care or in a children's home.	£459	£576		Not Available	£571	Low 2● = E0<E360 3● = E360<E385 4● = E385<E514 High 2● = >=E592 3● = E514<E592	Optimum range £385-E514 2002/03 Performance Rating 4 ● 2003/04 Performance Rating 4 ●
Effectiveness of service delivery and outcomes	C18		OC2	The percentage of children aged 10 or over who had been looked after continuously for at least 12 months, who were given a final warning/reprimand/caution or convicted during the year for an offence committed whilst they were looked after, expressed as a ratio of the percentage of all children aged 10 or over given a final warning/reprimand/caution or convicted for an offence in the police force area.	2.0	1.9	2.1	Not Available	1.8	Low 2● = 0<1 3● = 1<3 High 2● = 3<10.5	Optimum range 1-3. 2004/05 Performance Rating 3 ● 2003/04 Performance Rating 3 ●
	C19		OC2	The average of the % of children looked after at 30 September who had been looked after continuously for at least 12 months, and who had their teeth checked by a dentist during the previous 12 months, and had an annual health assessment during the previous 12 months. This is the average of two indicators which are calculated separately.	72.1%	70.3%	71.6%	Not Available	77.0%	1● = 0<50 2● = 50<60 3● = 60<70 4● = 70<80 5● = 80<100	Optimum range 80-100%. 2004/05 Performance Rating 4 ● 2003/04 Performance Rating 4 ● Change in definition in 2002/03
	C20	BV162	CPR3	The percentage of child protection cases which should have been reviewed during the year that were reviewed.	96.2%	100.0%		97.1%	100.0%	1● = 0<92.5 2● = 92.5<95 3● = 95<97.5 4● = 97.5<100 5● = 100<100	Optimum range 100%. Performance Rating 2004/05= 5 ● Performance Rating 2003/04= 3 ●
	C21		CPR3	The percentage of children deregistered from the Child Protection Register during the year who had been on the Register continuously for two years or more.	4.6%	13.5%		4.7%	6.0%	1● = 20<100 2● = 15<20 3● = 10<15 4● = 0<10 5● = n/a	Optimum range 0-10%. 2004/05 Performance Rating 3 ● 2003/04 Performance Rating 4 ●

Children's Social Care Performance Assessment Framework Indicators 2005/06

PAF AREA	PAF Indicator	Best Value	Data Source	Definition	Actual 2003/04	Actual 2004/05	Actual 2005/06	Qtr3 2005/06	Target 2005/06	PAF Star Rating 2004/05	Performance Commentary
Effectiveness of service delivery and outcomes (continued)	C23	BV163	SSDA 903	The number of looked after children adopted during the year as a percentage of the number of children looked after at 31 March who had been looked after for 6 months or more on that day.	4.3%	3.4%		3.5%	6.0%	Low 1● = 0<3 2● = 3<6 3● = 6<7 4● = 7<8 5● = 8<25 High 2● = 25<100 4● = n/a	Optimum range 8-25% 2004/05 Performance Rating 2 ● 2003/04 Performance Rating 2 ●
	C24		OC2	The percentage of children who had been looked after continuously for at least 12 months and were of school age, who missed a total of at least 25 days of schooling for any reason during the previous school year.	27.8%	17.9%	12.4%	Not Applicable	15.0%	1● = 20<50 2● = 15<20 3● = 10<15 4● = 5<10 5● = 0<5	Optimum range 0-5% Performance Rating 2004/05= 2 ● Performance Rating 2003/04= 1 ●
	C63		SSDA 903	The number of children and young people who communicated their views specifically for their latest statutory review as a percentage of the number of children and young people who were looked after during the year for more than four weeks.		77.0%		57.8%	80.0%	1● = 0<65 2● = 65<75 3● = 75<85 4● = 85<95 5● = 95<100	Optimum range 95-100% Performance Rating 2004/05 3 ●
	C64		CPR3	The percentage of Core Assessments that were completed within 35 working days of their commencement.		72.9%		83.5%	78.0%	1● = 0<45 2● = 45<55 3● = 55<65 4● = 65<75 5● = 75<100	Optimum range 75-100% Performance Rating 2004/05 4 ●
	C68		SSDA 903	The percentage of children looked after cases which should have been reviewed during the year that were reviewed during the year.				66.0%			
	C69		SSDA 903	Distance children newly looked after are placed from home				0.0%			
Quality of services for users and carers	D35		SSDA903	The percentage of children who had been looked after continuously for at least 4 years, who were currently in a foster placement where they had spent at least 2 years.	41.2%	46.3%		49.3%	48.0%	Low 1● = 0<40 2● = 40<50 3● = 50<60 4● = 60<70 5● = 70<80 High 2● = 80<100	Optimum range 70-80% 2004/05 Performance Rating 2 ● 2003/04 Performance Rating 2 ●
Fair Access	E44		PSSEX1	Gross expenditure on children in need but not looked after, as a percentage of gross expenditure on all children's services	33.0%	34.0%		Not Available	34.0%	Low 2● = 0<27 3● = 27<32 4● = 32<43 High 2● = 48<100 3● = 43<48	Optimum range 32<43% 2004/05 Performance Rating 4 ● 2003/04 Performance Rating 4 ●
	E45		CIN Census	The ratio of the percentage of children in need that were from minority ethnic groups to the percentage of children in the local population that were from minority ethnic groups.	1.2	1.2		Not Available	1.1	Low 2● = 0<1 3● = 1<2 High 2● = 2<6	Optimum range 1-2 2004/05 Performance Rating 3 ● 2003/04 Performance Rating 3 ●
	E67			The number of disabled children supported in their families or living independently, receiving services in the census week, as percentage of the estimated total population of disabled children in the council area		4.8		Not Available	5.5	1● = 2● = 0.0<4.0 3● = 4.0<6.4 4● = 6.4<10.0 5● =	Optimum range 6.4-10.0 2004/05 Performance Rating 3 ●

Key:

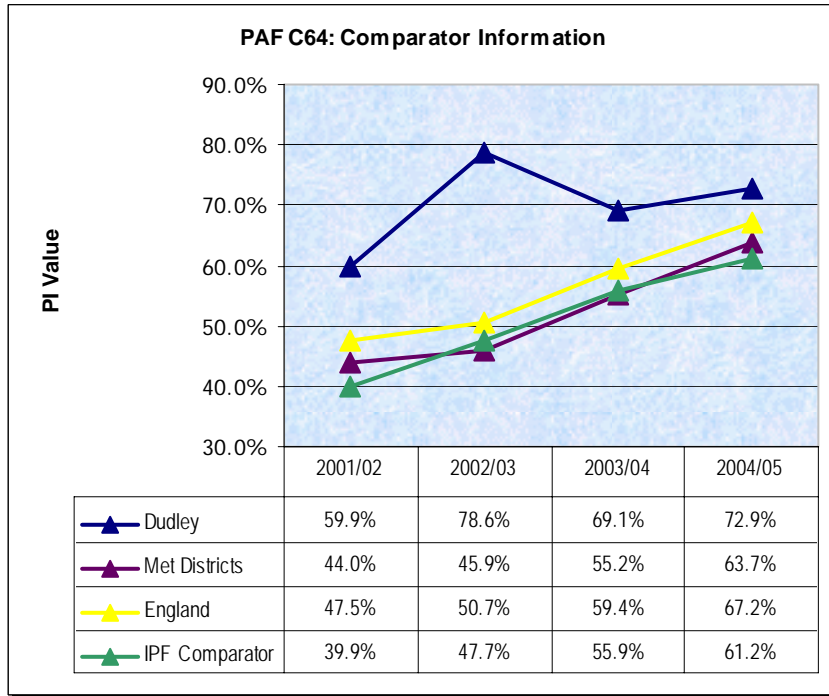


	investigate urgently
	Ask questions about performance
	Acceptable but possible room for improvement
	Good performance
	very good performance

EVERY CHILD MATTERS: OBJECTIVE 2: STAYING SAFE

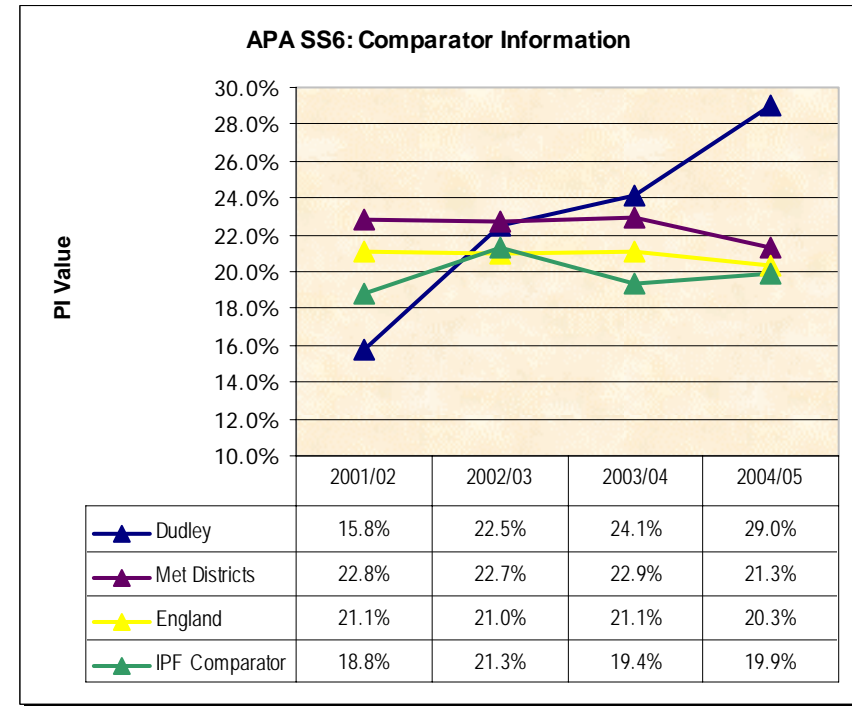
CHILDREN IN NEED

PAF C64 Timing of core assessments



BANDING: Dudley 2004/05 - 4●	Quartile 2004/05 (Eng)
1● = 0 to 45, 2● = 45 to 55, 3● = 55 to 65,	Lower = 55.4
4● = 65 to 75, 5● = 75 to 100	Upper = 77.5

APA SS6 % referrals occurring within 12 months of previous referral

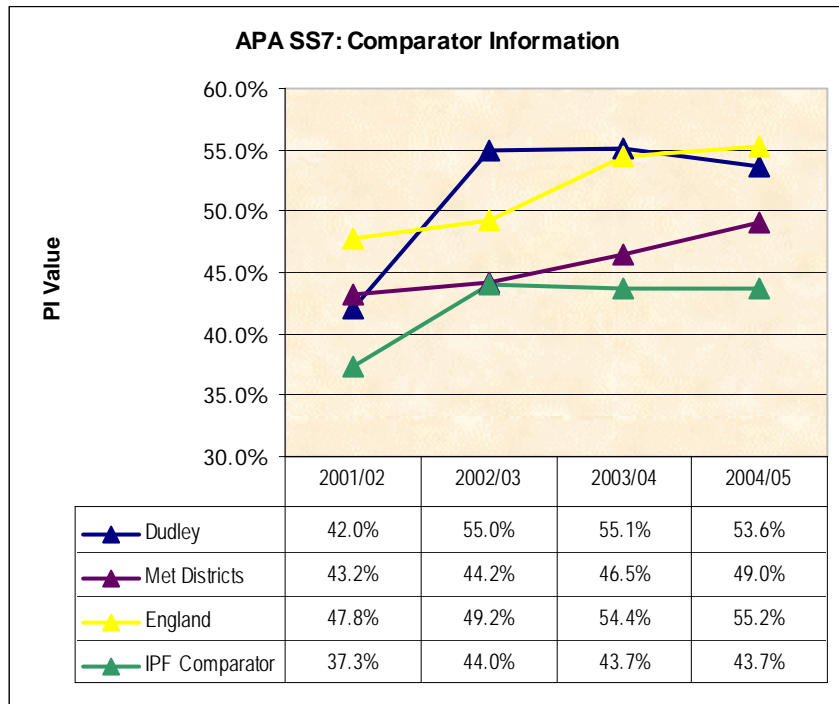


BANDING: Dudley 2004/05 - Upper Quartile	Quartile 2004/05 (Eng)
Optimum Performance - Lower percentage	Lower = 13.6
	Upper = 25.0

Note: IPF Comparator Group: Dudley, Bury, Stockport, Walsall, Bolton, Tameside, Wakefield, Wigan, Darlington, Kirklees, Warrington, Derby, St Helens, Rotherham, Trafford, Calderdale

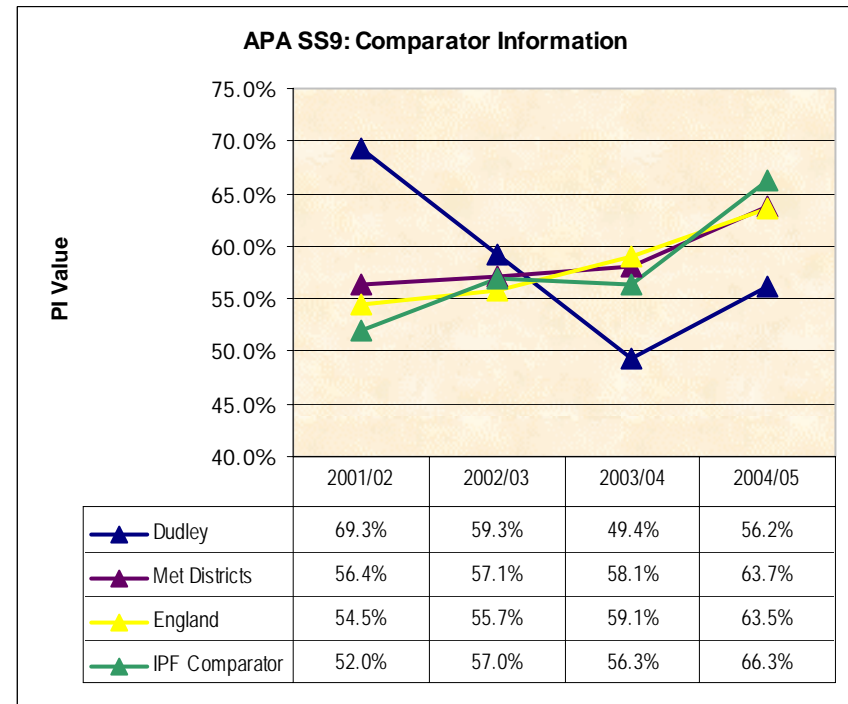
EVERY CHILD MATTERS: OBJECTIVE 2: STAYING SAFE

APA SS7 % referrals of children in need leading to initial assessments



BANDING: Dudley 2004/05 – Lower Middle Quartile	Quartile 2004/05 (Eng)
	Lower = 37.8 Upper = 70.8

APA SS9 Percentage of initial assessments within 7 working days of referral



BANDING: Dudley 2004/05 – Lower Middle Quartile	Quartile 2004/05 (Eng)
Optimum Performance – Higher percentage	Lower = 52.5 Upper = 75.9

Other Associated Indicators

PAF E45 Ethnicity of children in need

APA SS5 Referrals of children in need per 10,000 population aged U18

APA SS8 Initial CP conferences in year per 10,000 population under 18

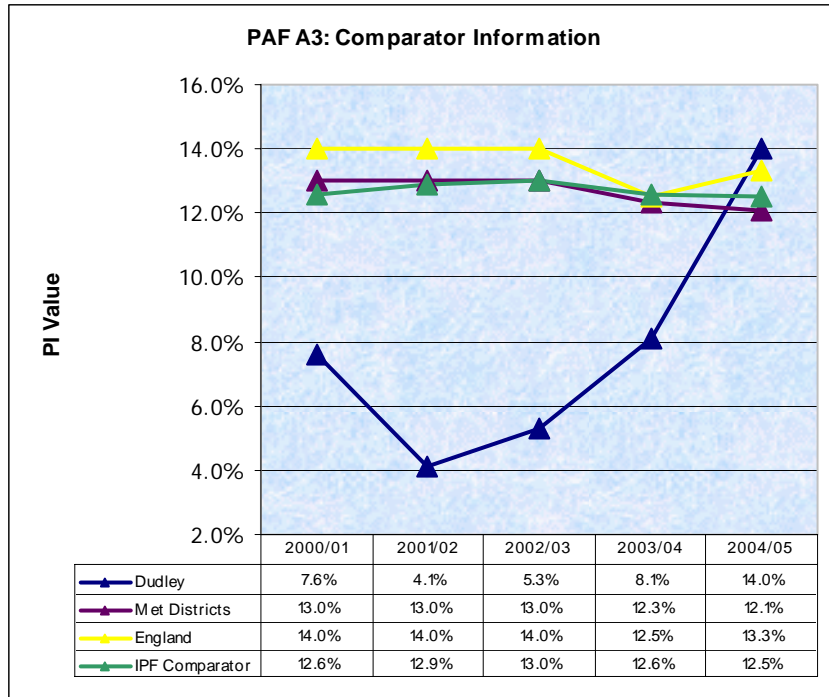
APA SS10 Core assessments of children in need per 10,000 population Under 18

Note: IPF Comparator Group: Dudley, Bury, Stockport, Walsall, Bolton, Tameside, Wakefield, Wigan, Darlington, Kirklees, Warrington, Derby, St Helens, Rotherham, Trafford, Calderdale

EVERY CHILD MATTERS: OBJECTIVE 2: STAYING SAFE

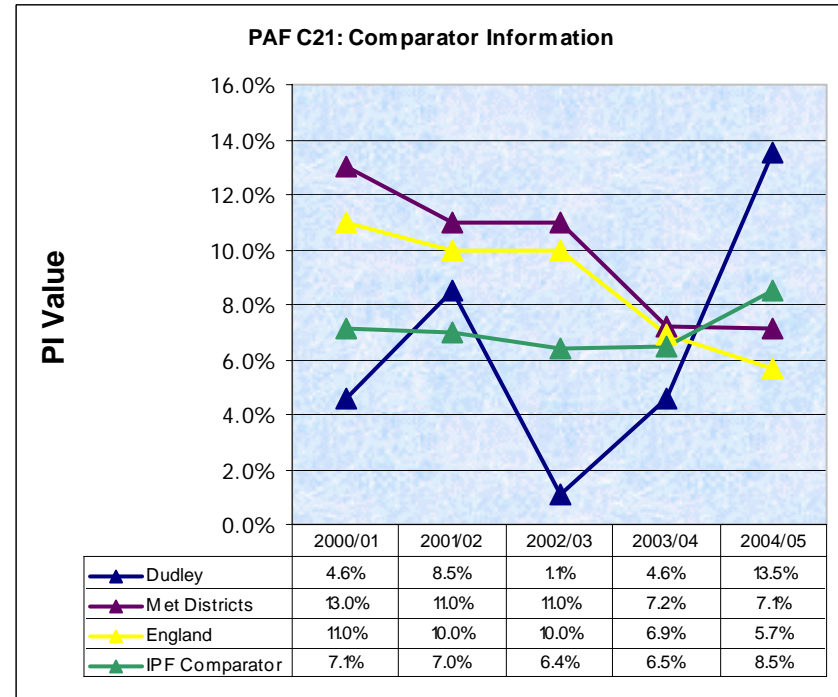
CHILD PROTECTION

PAF A3 Re-registrations on the Child Protection Register



BANDING: Dudley 2004/05 - 5●	Quartile 2004/05 (Eng)
Low 1● = 0 to 3, 2● = 3 to 6, 3● = 6 to 8, 4● = 8 to 10 5● = 10 to 15	Lower = 9.1 Upper = 16.1
High 1● = 24 to 100, 2● = 20 to 24, 3● = 17.21 to 20 4● = 15 to 17.21	

PAF C21 Duration on the Child Protection Register

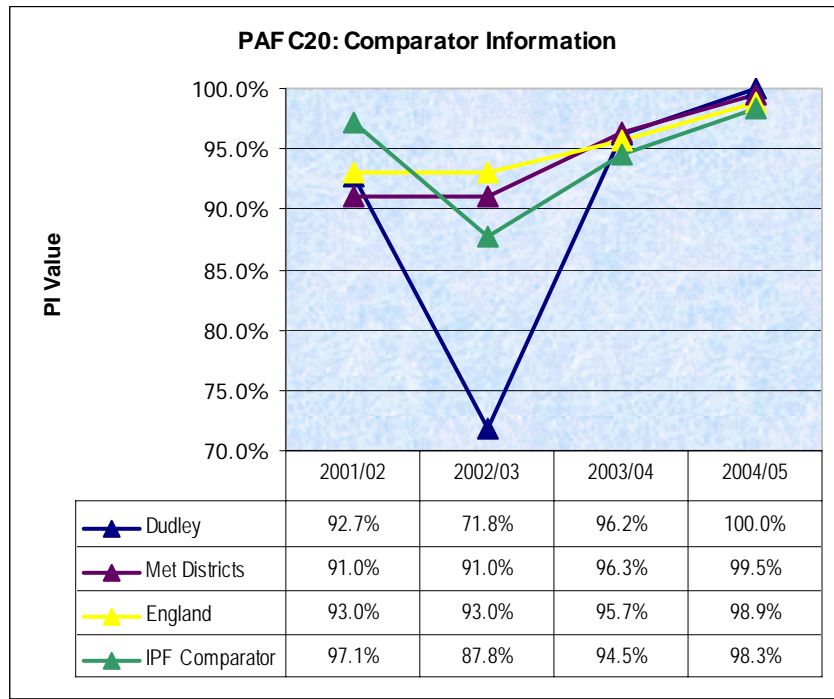


BANDING: Dudley 2004/05 – Lower Middle Quartile	Quartile 2004/05 (Eng)
Optimum Performance – Higher percentage	Lower = 3.2 Upper = 9.8

Note: IPF Comparator Group: Dudley, Bury, Stockport, Walsall, Bolton, Tameside, Wakefield, Wigan, Darlington, Kirklees, Warrington, Derby, St Helens, Rotherham, Trafford, Calderdale

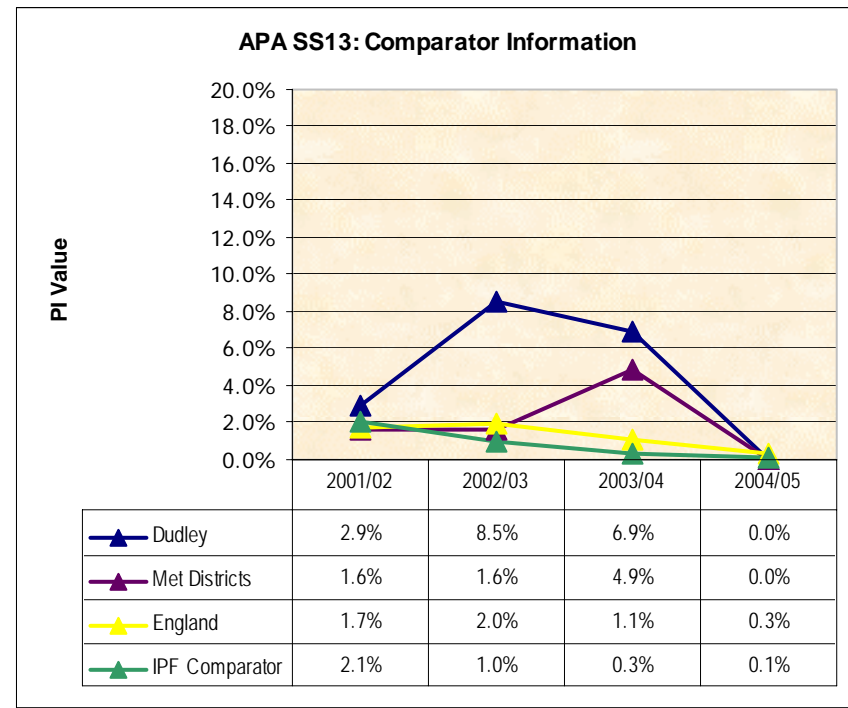
EVERY CHILD MATTERS: OBJECTIVE 2: STAYING SAFE

PAF C20 Reviews of Child Protection Cases



BANDING: Dudley 2004/05 - 5●	Quartile 2004/05 (Eng)
Low 1● = 0 to 92.5, 2● = 92.5 to 95, 3● = 95 to 97.5, 4● = 97.5 to 100, 5● = 100	Lower = 98.4 Upper = 100

APA SS13 Children and young people on the child protection register who are not allocated to a social worker

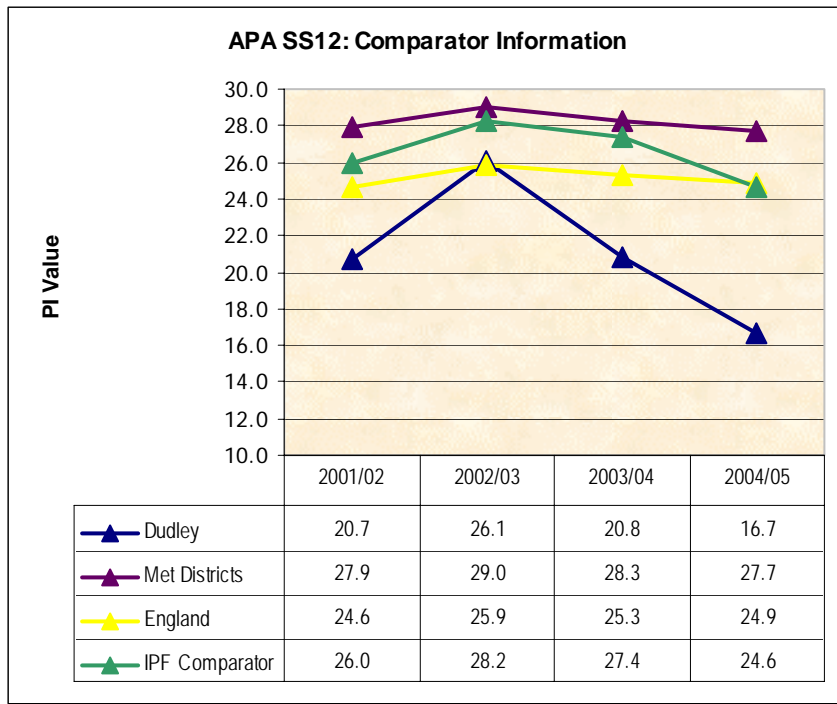


BANDING: Dudley 2004/05 – Upper Quartile	Quartile 2004/05 (Eng)
Optimum Performance – Higher percentage	Lower = 0 Upper = 0

Note: IPF Comparator Group: Dudley, Bury, Stockport, Walsall, Bolton, Tameside, Wakefield, Wigan, Darlington, Kirklees, Warrington, Derby, St Helens, Rotherham, Trafford, Calderdale

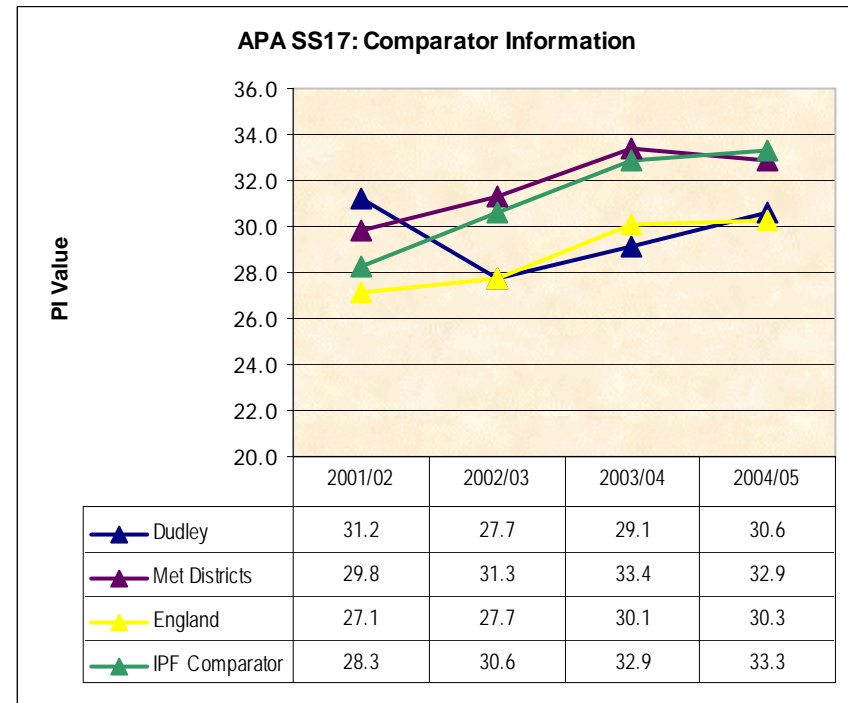
EVERY CHILD MATTERS: OBJECTIVE 2: STAYING SAFE

APA SS12 Number on child protection register per 10,000 population under 18



BANDING: Dudley 2004/05 – Lower Quartile	Quartile 2004/05 (Eng)
	Lower = 17.4
	Upper = 31.3

APA SS17 De-registrations from the child protection register per 10,000 population aged under 18



BANDING: Dudley 2004/05 – Upper Middle Quartile	Quartile 2004/05 (Eng)
	Lower = 22.0
	Upper = 38.1

Other Associated Indicators

APA SS14 Registrations per 10,000 population under 18

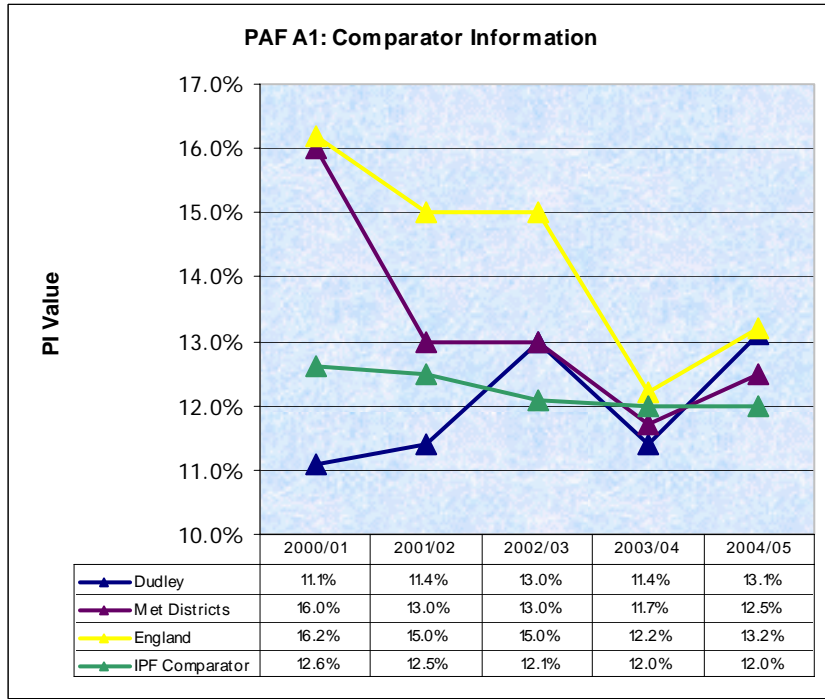
APA SS19 The ratio of the proportion of children on the Child Protection Register that were from minority ethnic groups to the proportion of children in the local population that were from minority ethnic groups

Note: IPF Comparator Group: Dudley, Bury, Stockport, Walsall, Bolton, Tameside, Wakefield, Wigan, Darlington, Kirklees, Warrington, Derby, St Helens, Rotherham, Trafford, Calderdale

EVERY CHILD MATTERS: OBJECTIVE 2: STAYING SAFE

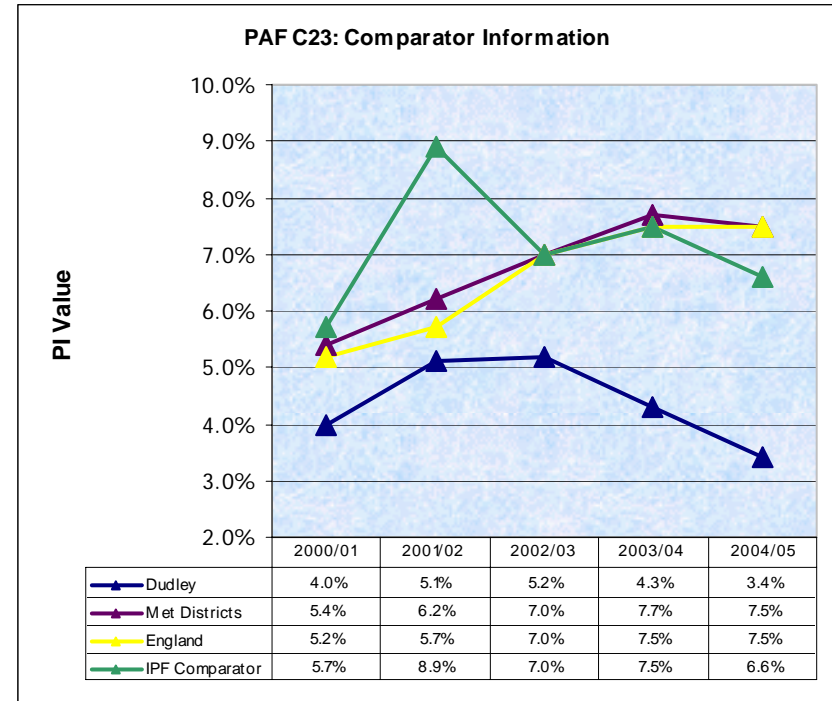
LOOKED AFTER CHILDREN

PAF A1 Stability of placements of children looked after



BANDING: Dudley 2004/05 - 5●	Quartile 2004/05 (Eng)
1● = 20 to 100, 2● = 16.01 to 20, 5● = 0 to 16.01	Lower = 11 Upper = 15

PAF C23 Adoptions of children looked after

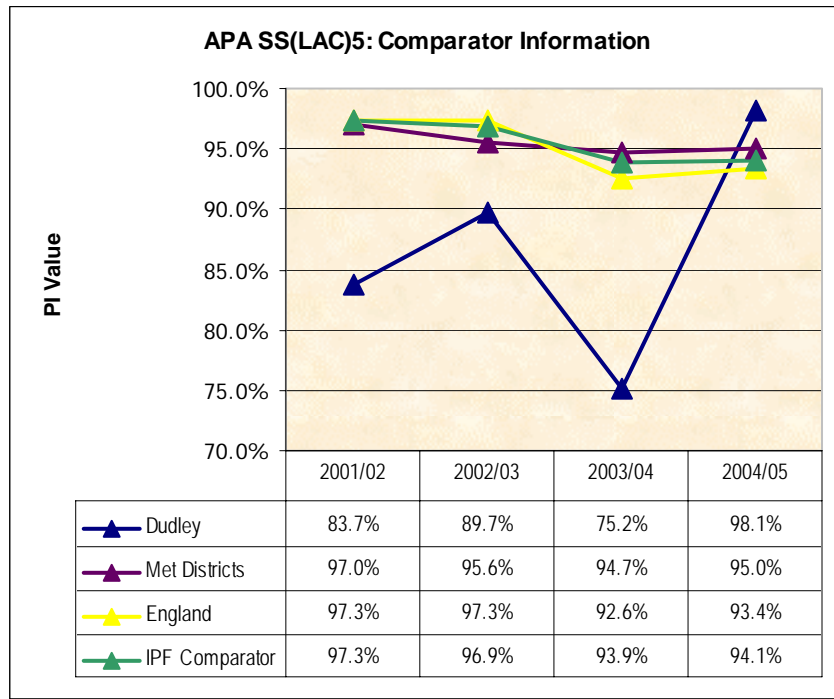


BANDING: Dudley 2004/05 - 2●	Quartile 2004/05 (Eng)
Low 1● = 0 to 3, 2● = 3 to 6, 3● = 6 to 7, 4● = 7 to 8, 5● = 8 to 25 High 1● = n/a, 2● = 25 to 100, 3● = n/a, 4● = n/a	Lower = 5.6 Upper = 9.3

Note: IPF Comparator Group: Dudley, Bury, Stockport, Walsall, Bolton, Tameside, Wakefield, Wigan, Darlington, Kirklees, Warrington, Derby, St Helens, Rotherham, Trafford, Calderdale

EVERY CHILD MATTERS: OBJECTIVE 2: STAYING SAFE

APA SS(LAC)5 % children looked after with named qualified social worker

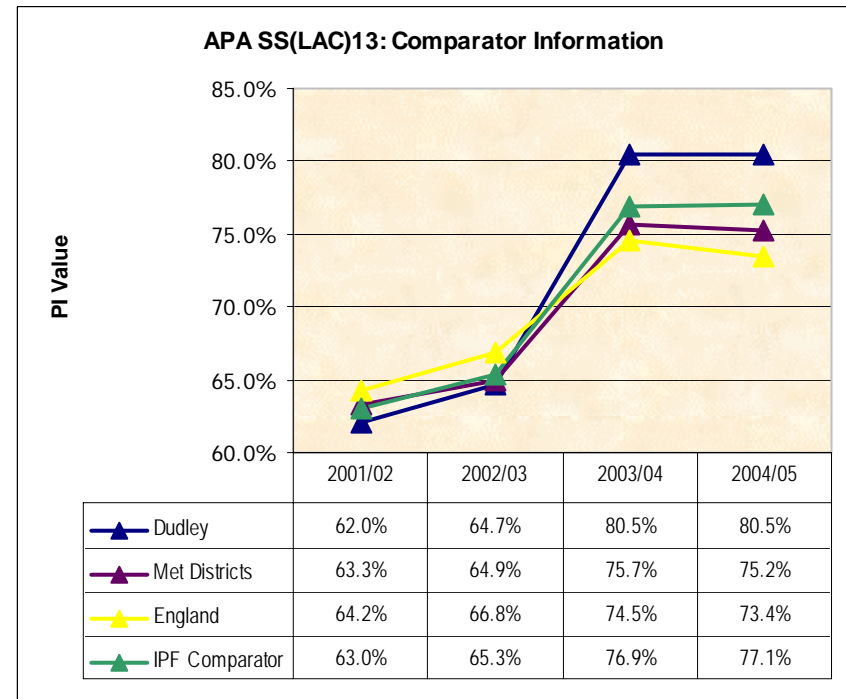


BANDING: Dudley 2004/05 – Lower Middle Quartile	Quartile 2004/05 (Eng)
Optimum Performance – Higher percentage	Lower = 88.2 Upper = 100.0

Other Associated Indicators

PAF B7 Children looked after in foster placements or placed for adoption
 PAF D35 Long term stability of children looked after
 APA SS(LAC)1 Children looked after 31 March per 10,000 population aged under 18
 APA SS6 % of eligible, relevant and former relevant children that have pathway plans, have been allocated a personal adviser and are resident outside the council's boundaries
 APA SS(LAC)8 % children looked after aged under 10 in foster placements
 APA SS(LAC)9 % children LA aged U10 in foster care placed within the council's boundary
 APA SS(LAC)10 % of children looked after aged under 10 placed with parents

APA SS(LAC)13 % of children looked after in foster placements



BANDING: Dudley 2004/05 – Upper Quartile	Quartile 2004/05 (Eng)
Optimum Performance – Higher percentage	Lower = 70.1 Upper = 78.5

APA SS(LAC)11 % of children looked after aged under 10 placed for adoption
 APA SS(LAC)12 % of children looked after in residential accommodation
 APA SS(LAC)14 Percentage of looked-after children fostered by relatives or friends
 APA SS(LAC)17 % looked after children placed for adoption in the year to 31 March
 APA SS(LAC)18 % looked after children adopted during the year placed for adoption within 12 months of best interest decision being made
 APA SS(LAC)21 The ratio of the proportion of looked after children that were from minority ethnic groups to the proportion of children in the local population that were from minority ethnic groups

Note: IPF Comparator Group: Dudley, Bury, Stockport, Walsall, Bolton, Tameside, Wakefield, Wigan, Darlington, Kirklees, Warrington, Derby, St Helens, Rotherham, Trafford, Calderdale