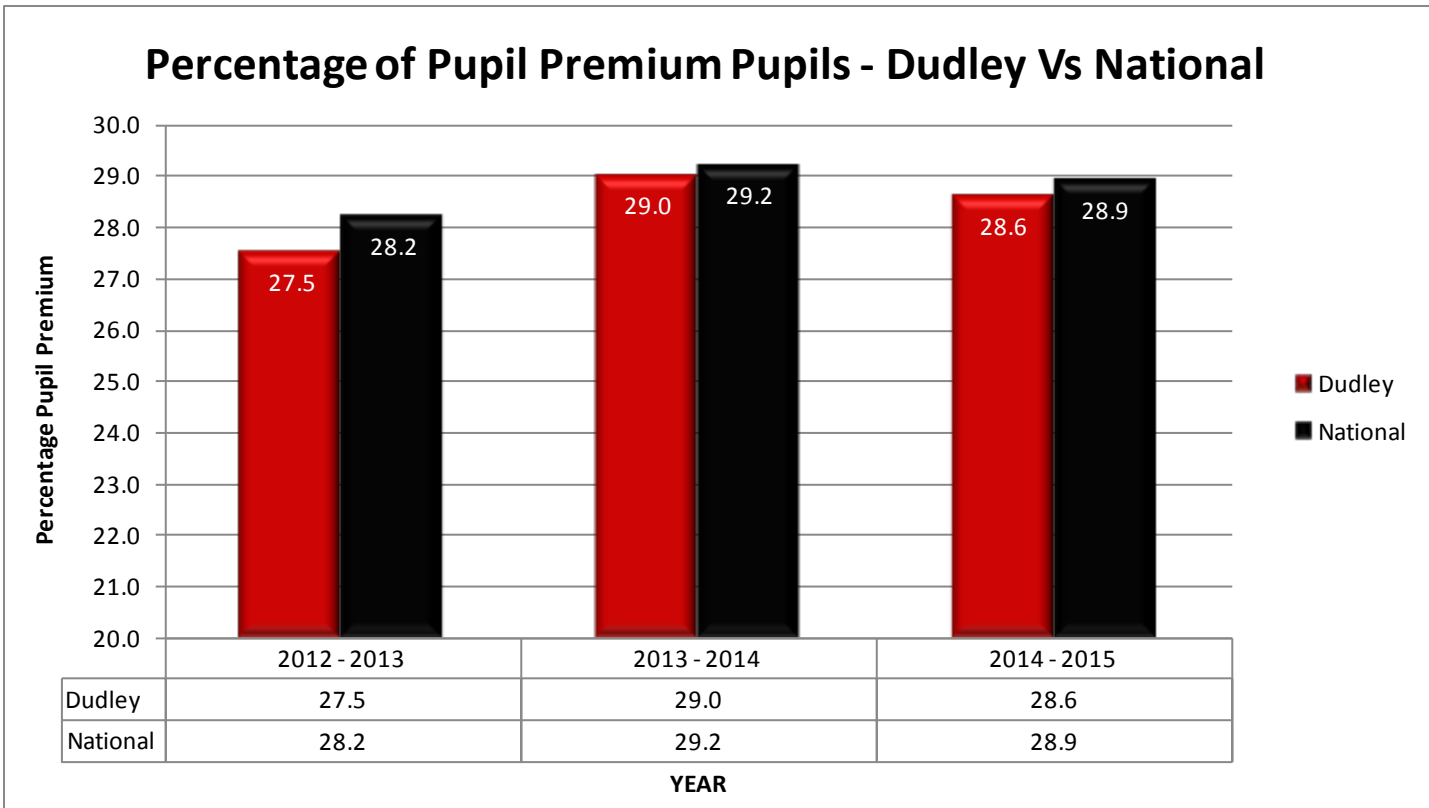


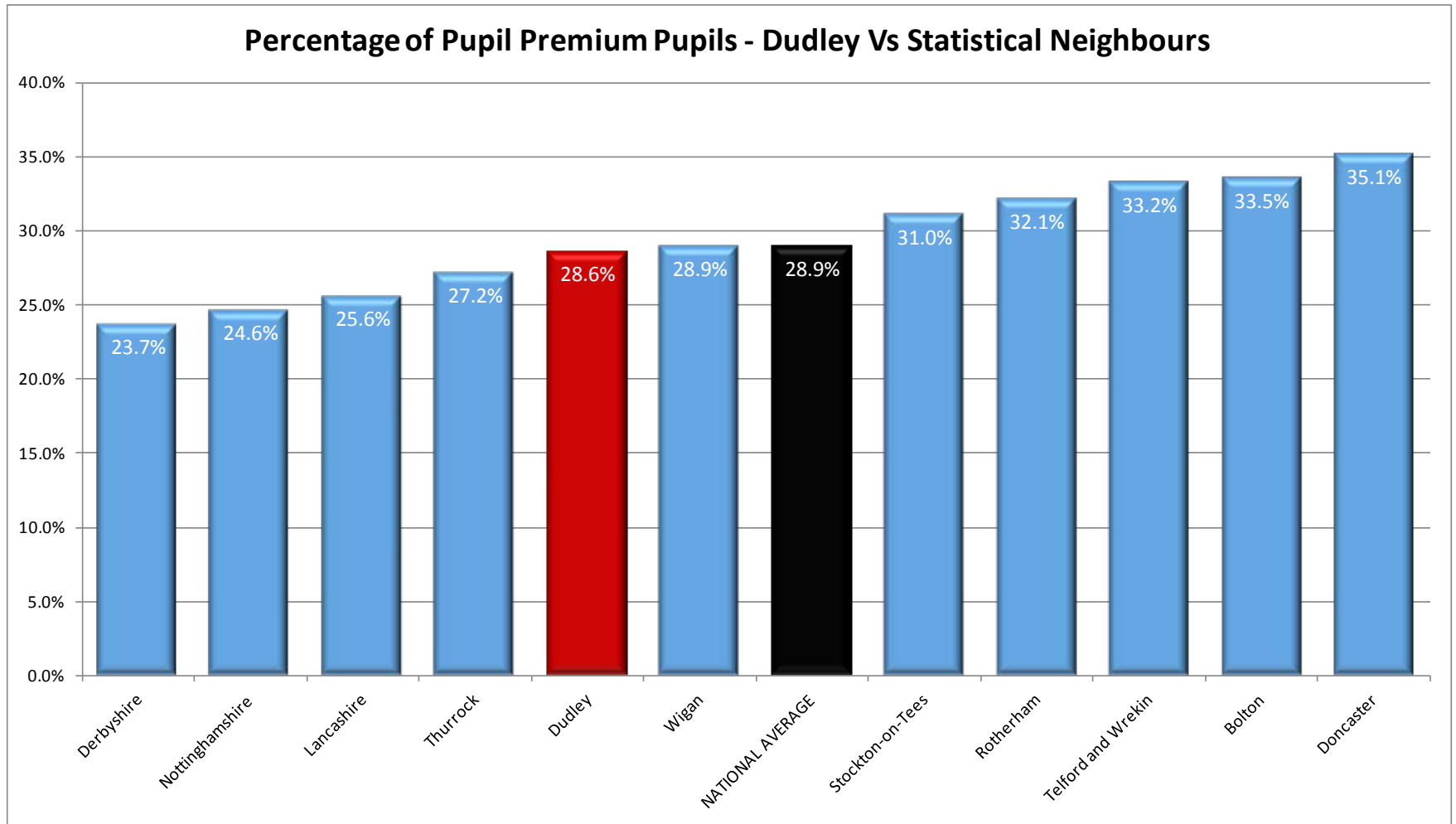
# Pupil Premium

National, Statistical & Geographical Neighbours  
Comparisons

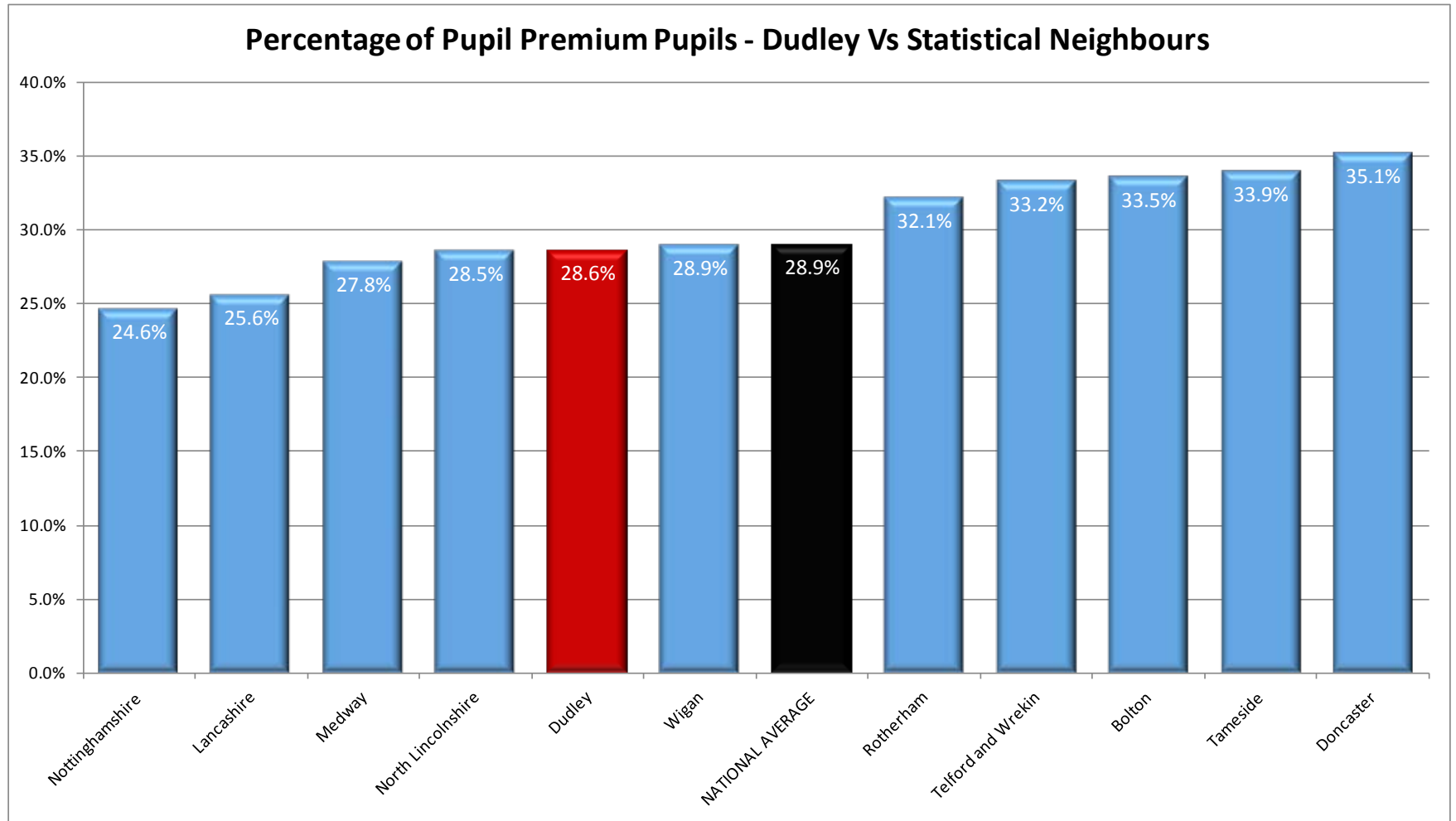
# Pupil Premium Pupils – National Comparison



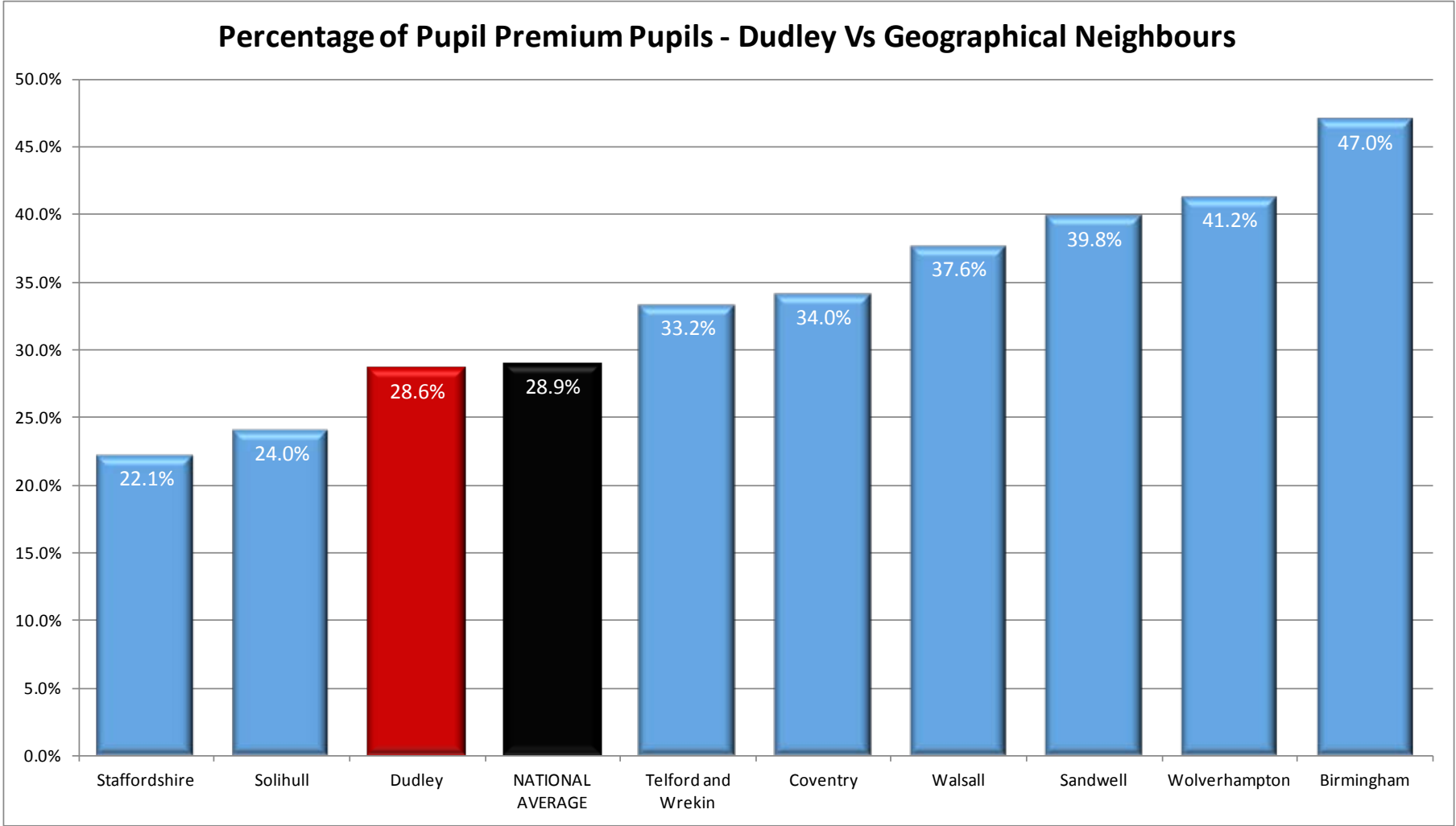
# Pupil Premium Pupils (2014 – 2015) – OLD Statistical Neighbours



# Pupil Premium Pupils (2014 – 2015) – NEW Statistical Neighbours

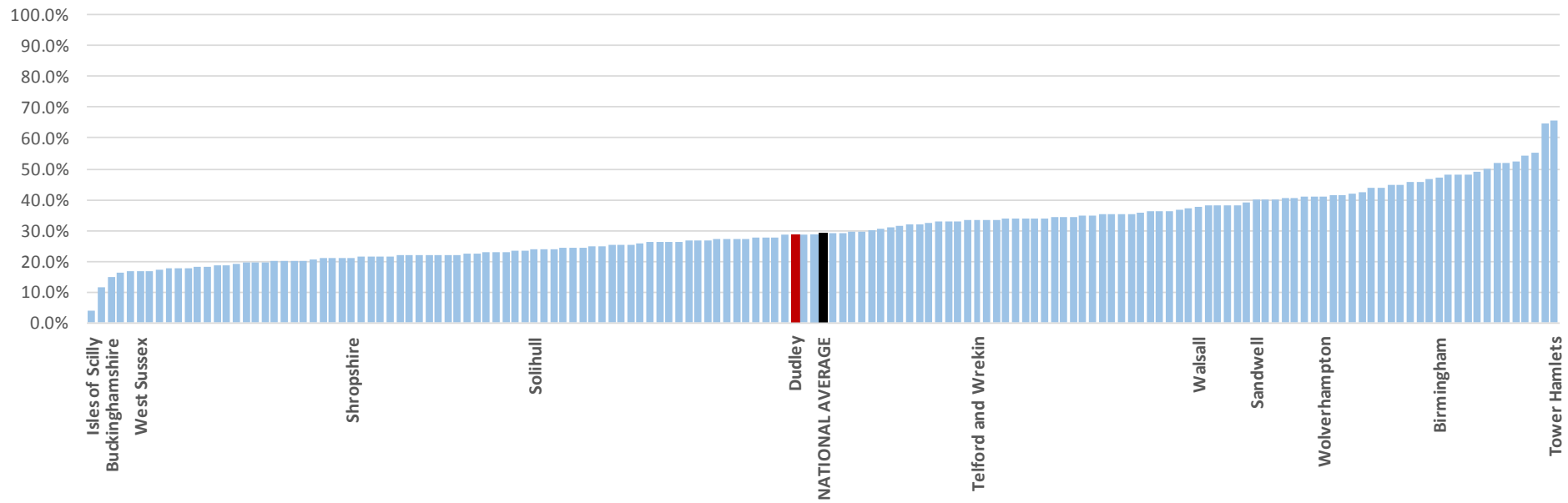


# Pupil Premium Pupils (2014 – 2015) – Geographical Neighbours



# Pupil Premium Pupils (2014 – 2015) – All Local Authorities

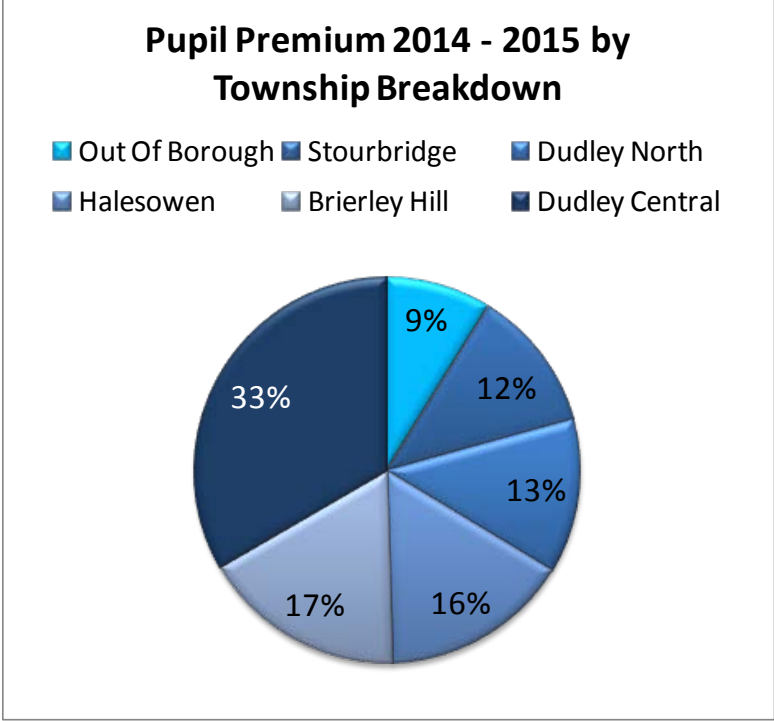
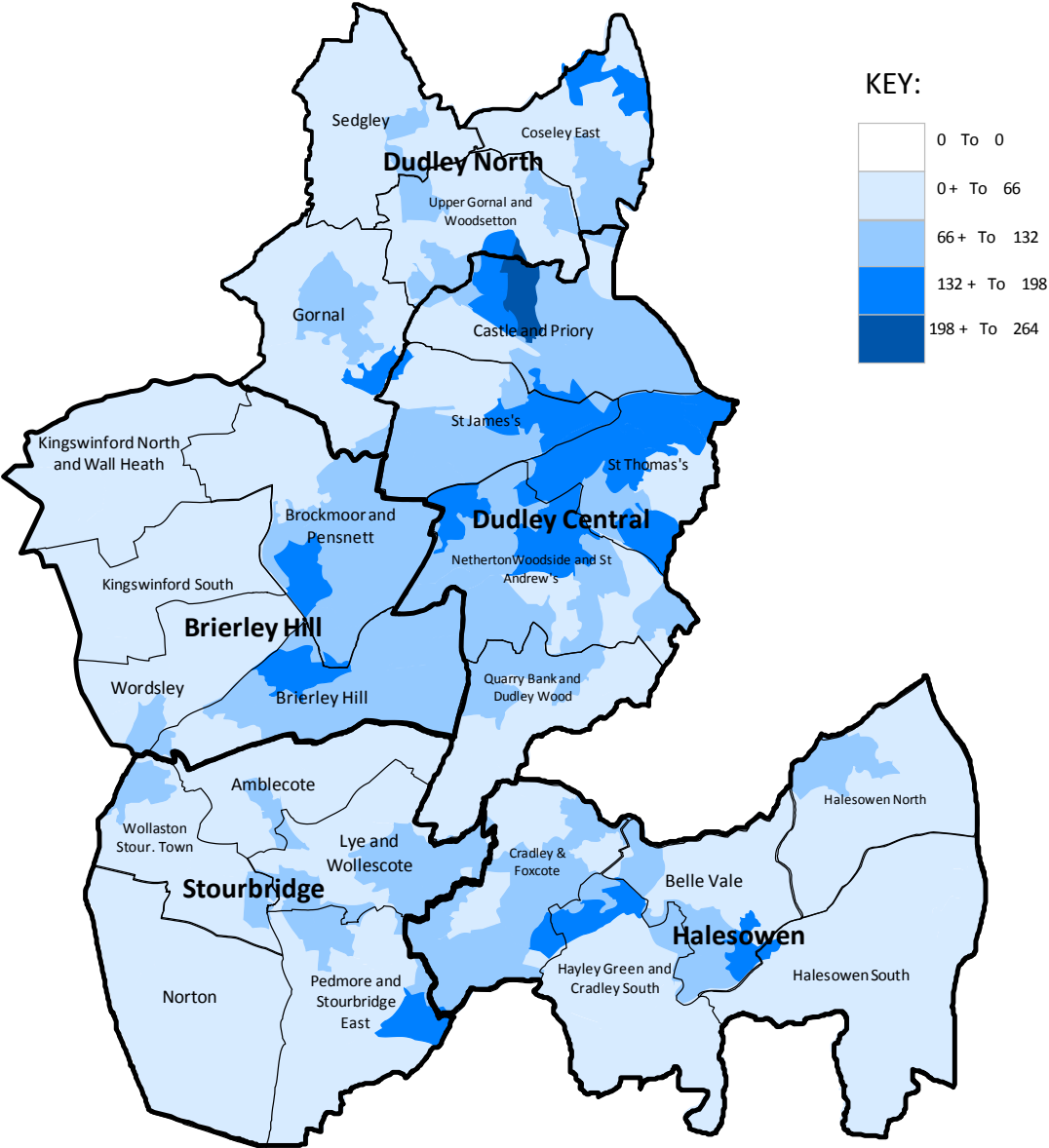
## Percentage of Pupil Premium Pupils - Dudley Vs All LAs



# Pupil Premium

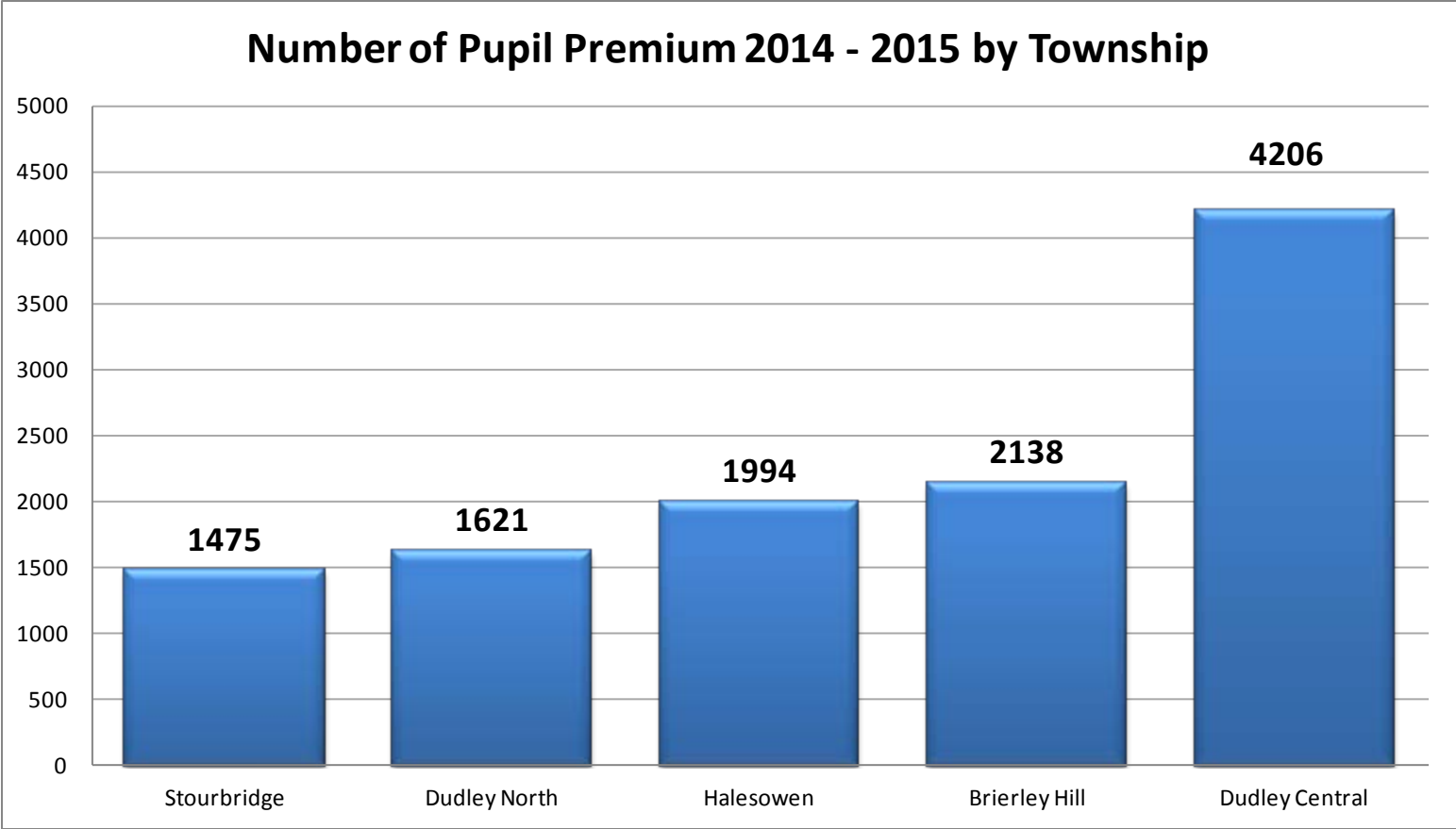
Geographical Distribution

# Pupil Premium Pupils Geographical Distribution

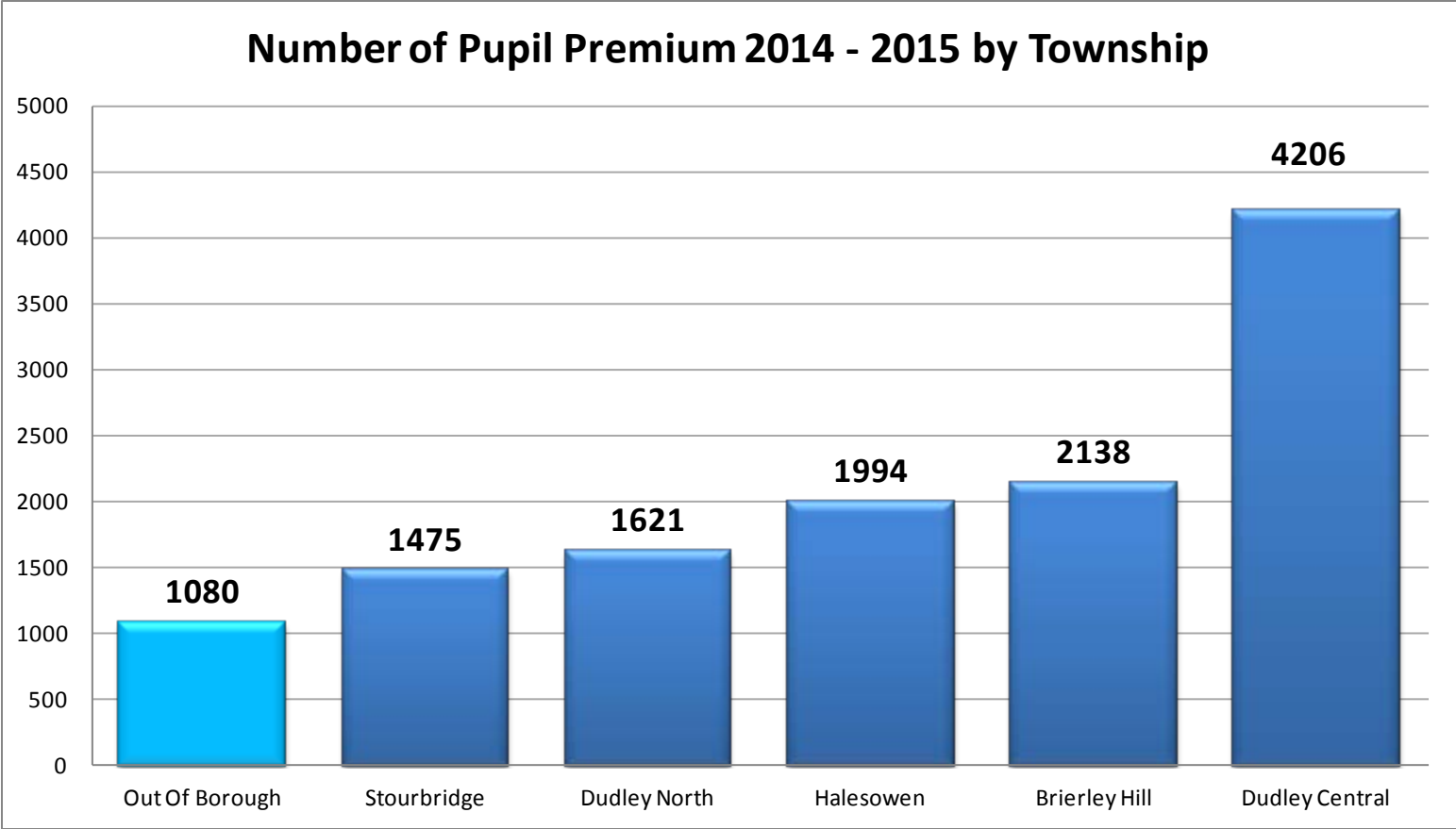




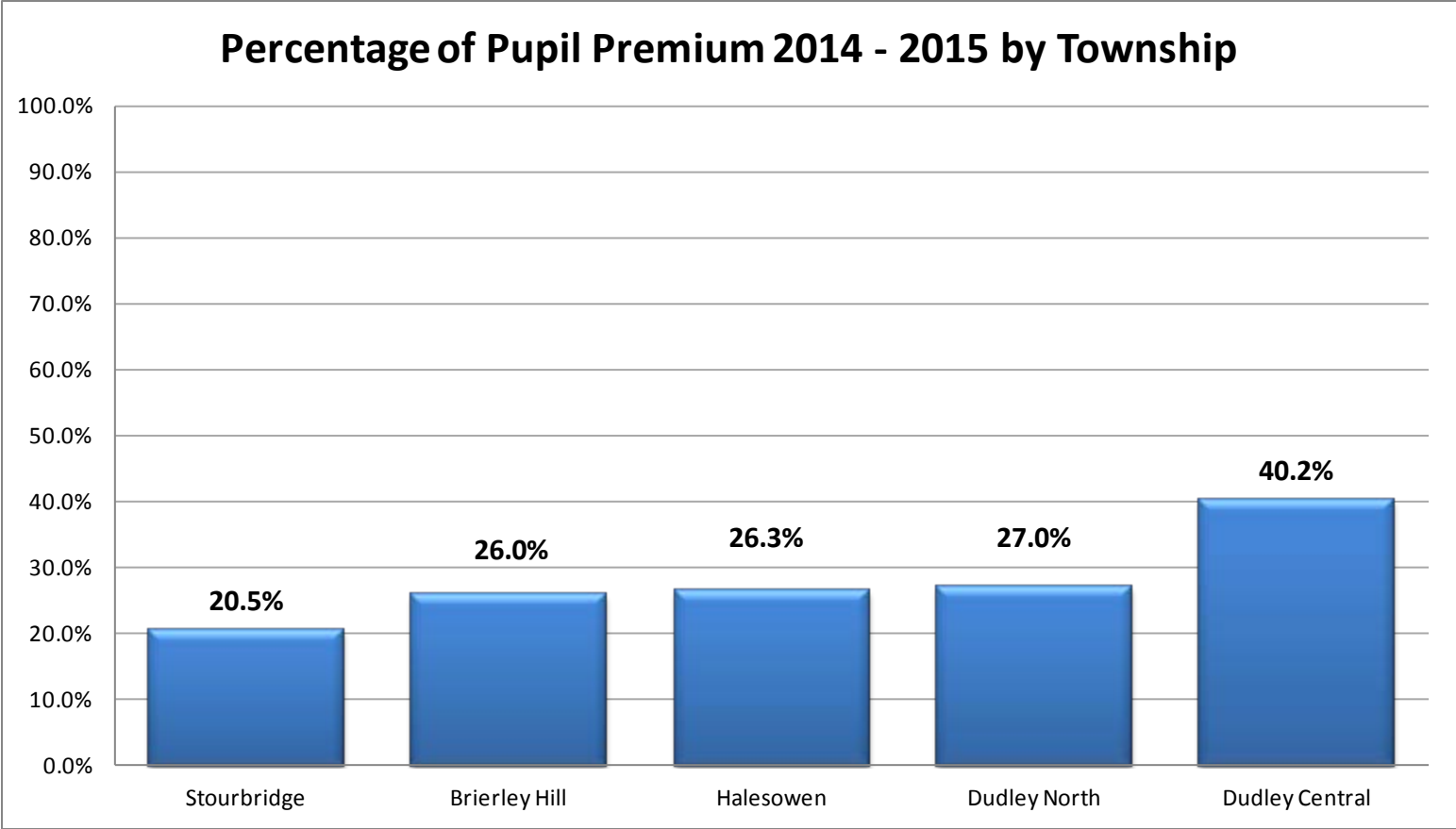
# Pupil Premium Pupils Geographical Distribution



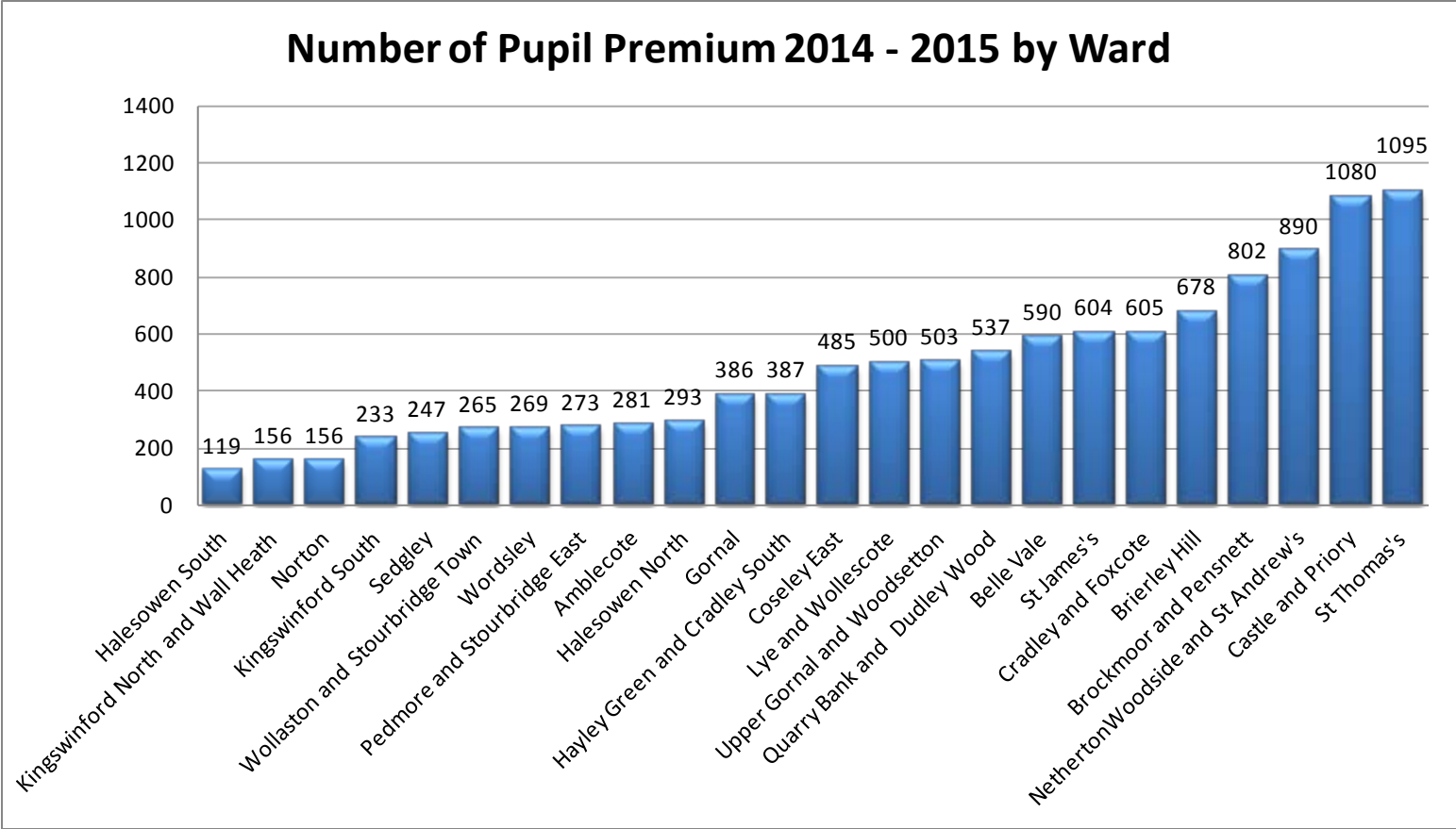
# Pupil Premium Pupils Geographical Distribution



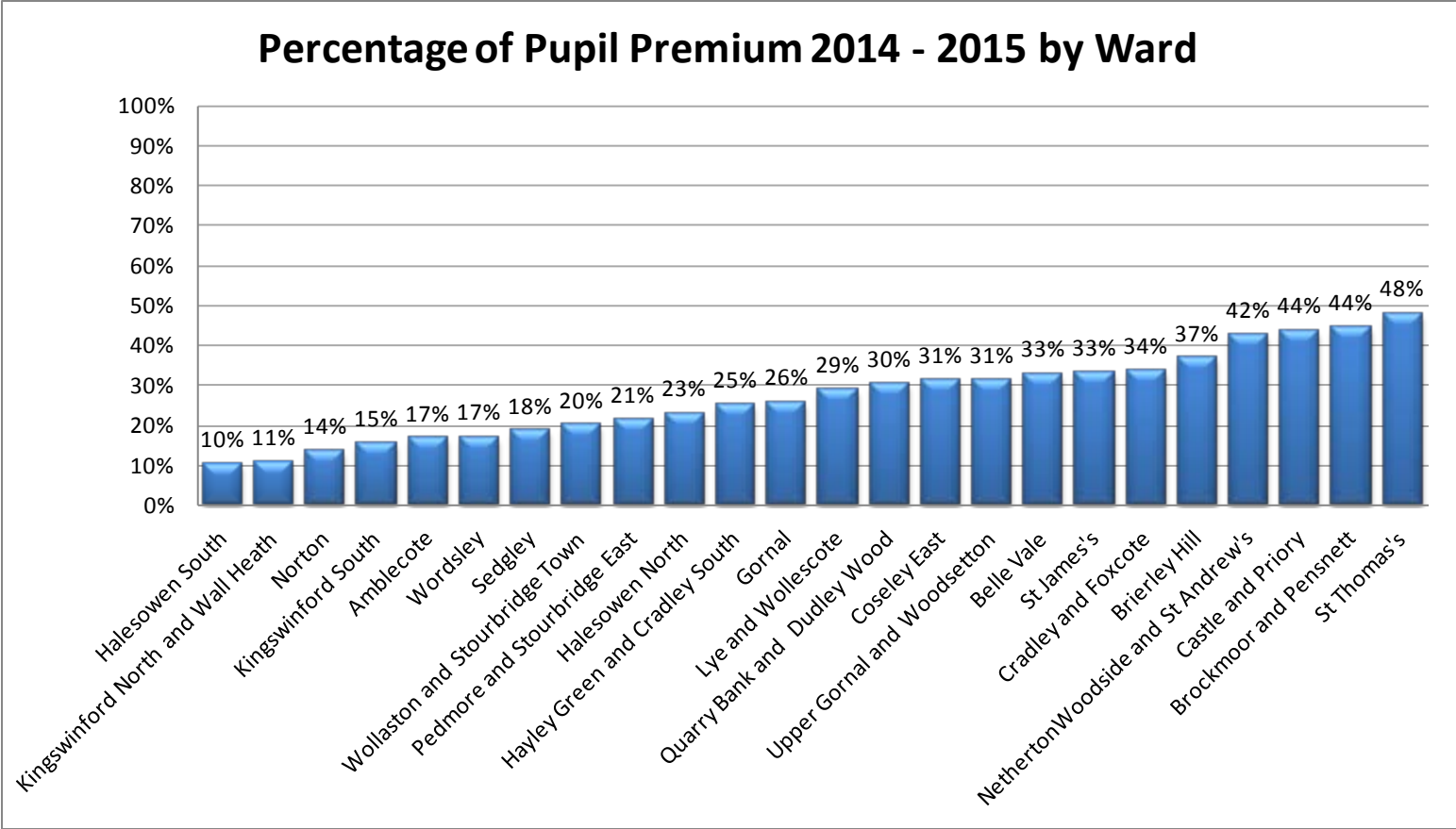
# Pupil Premium Pupils Geographical Distribution



# Pupil Premium Pupils Geographical Distribution



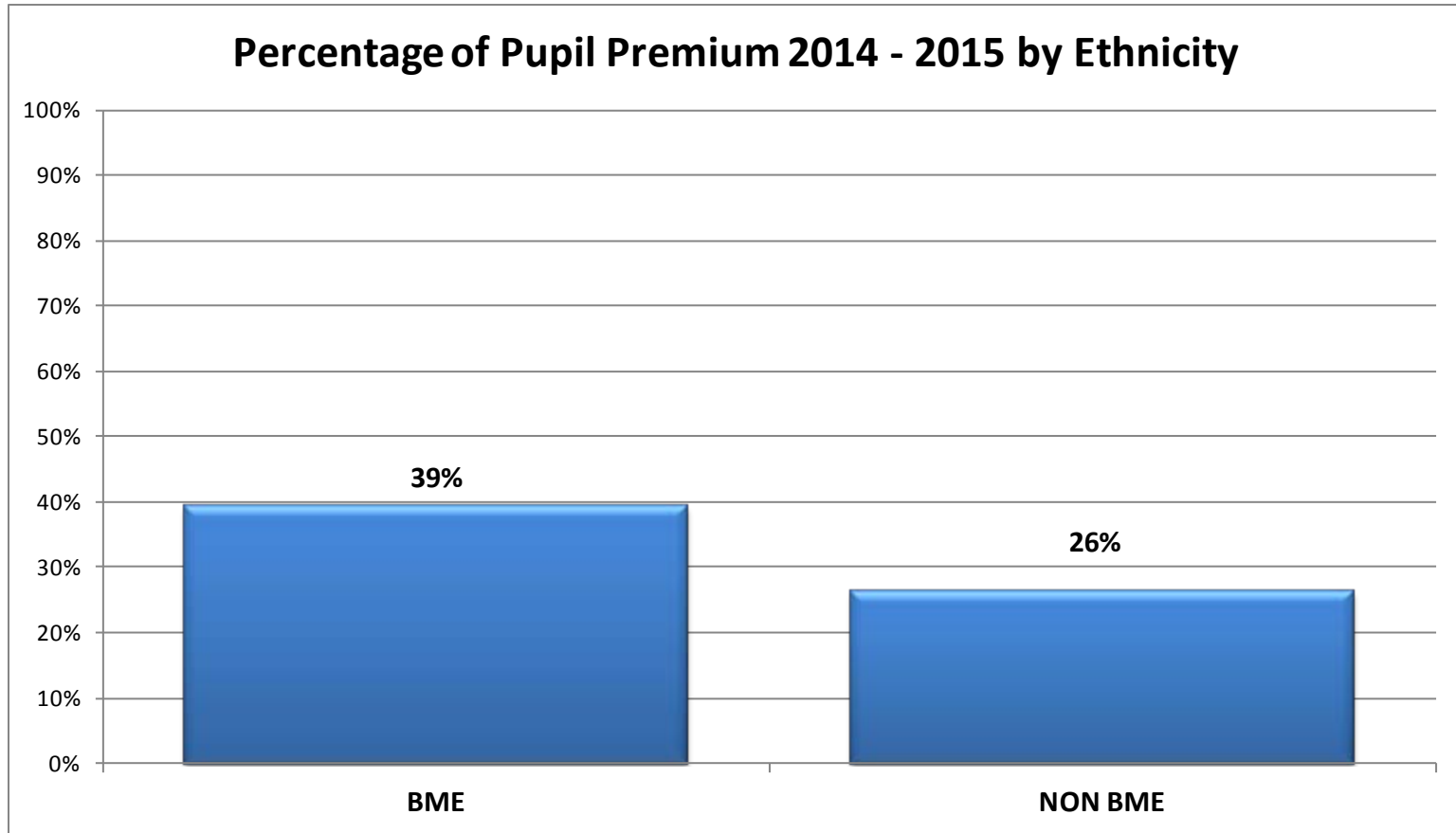
# Pupil Premium Pupils Geographical Distribution



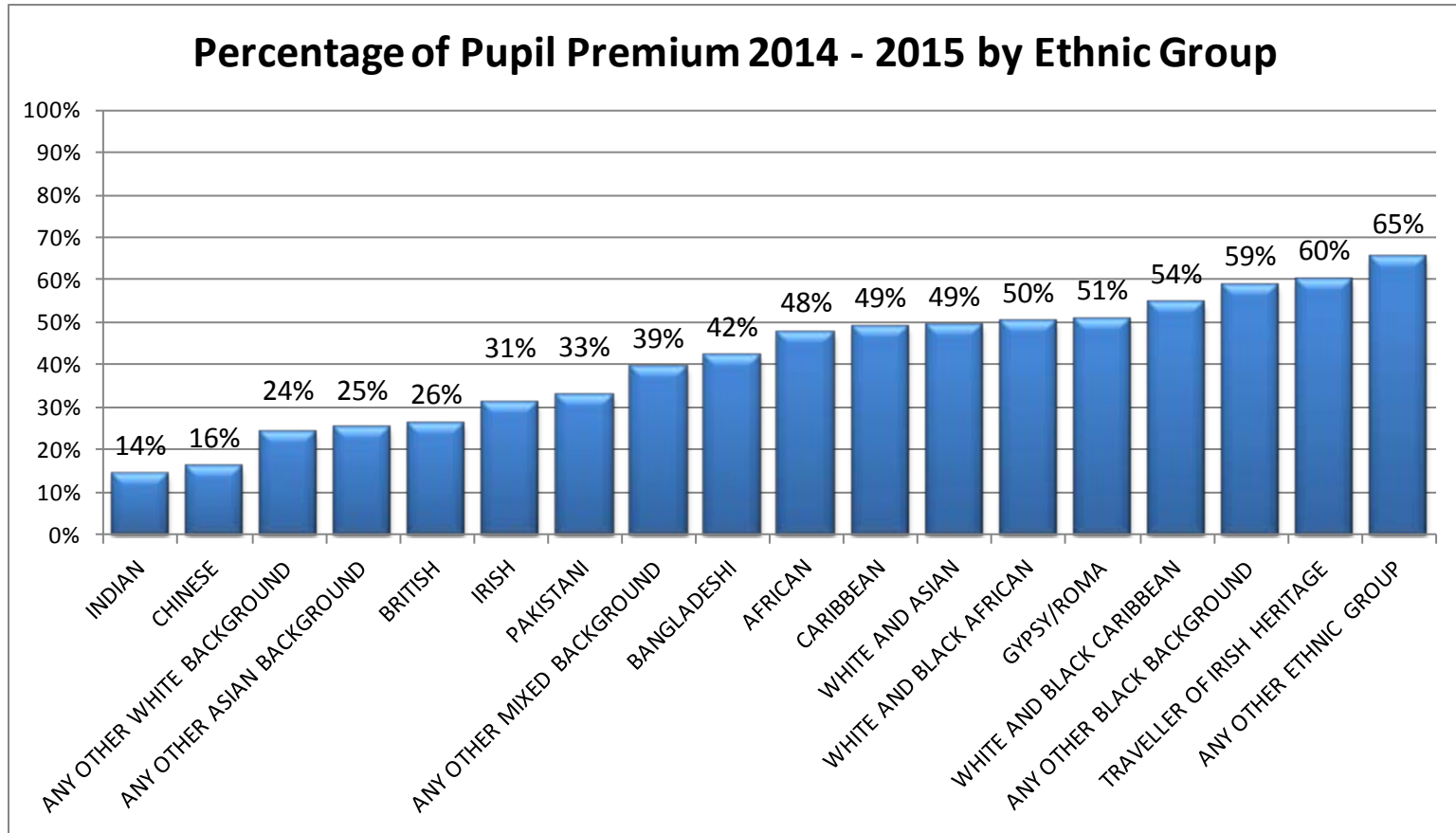
# Pupil Premium

Pupil Context

# Pupil Premium Pupils - Context

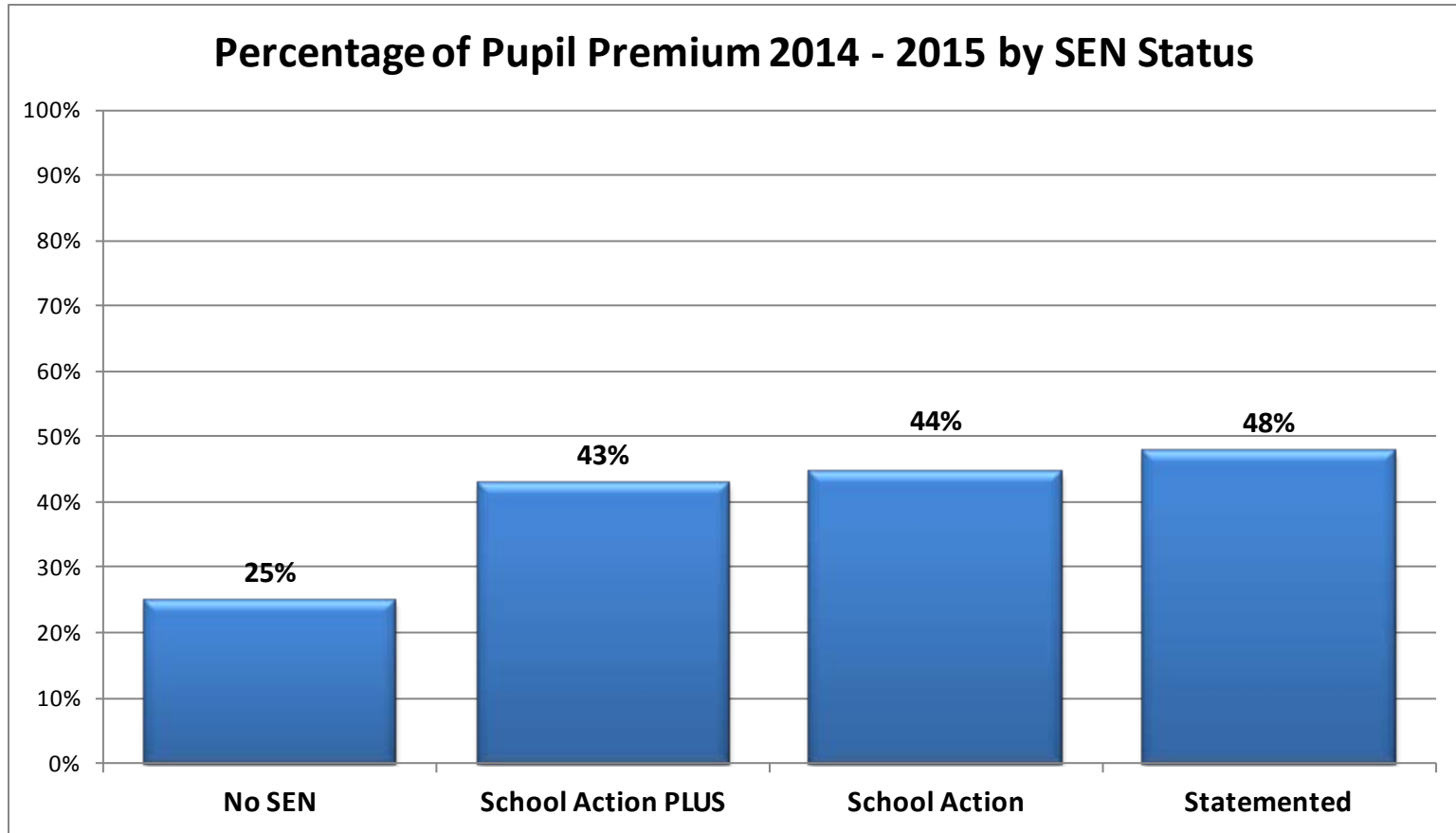


# Pupil Premium Pupils - Context





# Pupil Premium Pupils - Context



# Pupil Premium

Attainment Analysis

# Pupil Premium Performance Tables

<http://www.education.gov.uk/schools/performance/>

School name	% achieving A*-C in English and maths GCSEs							% achieving 5+ A*-C GCSEs (or equivalent) including English and maths GCSEs						
	All pupils	Disadvantaged pupils			Other pupils			All pupils	Disadvantaged pupils			Other pupils		
		2013	2012	2011	2013	2012	2011		2013	2012	2011	2013	2012	2011
<b>England - all schools</b>	60.0%	NA	NA	NA	NA	NA	NA	59.2%	NA	NA	NA	NA	NA	NA
<b>England - state funded schools only</b>	61.3%	41.8%	39.1%	37.0%	68.5%	66.1%	65.8%	60.6%	41.0%	38.5%	36.4%	67.9%	65.7%	65.3%
<b>Local Authority</b>	60.4%	36.1%	31.6%	33.8%	68.7%	64.7%	67.0%	59.7%	35.3%	31.2%	33.0%	68.0%	64.2%	66.2%
<b>Schools</b> (tick the box next to a school/college to select it for comparison - once you have selected all required schools/colleges <a href="#">click here: Compare</a> )														
<input type="checkbox"/> Bishop Milner Catholic School <span style="font-size: small;"> ⓘ</span>	77%	69%	39%	55%	78%	76%	61%	76%	69%	39%	55%	77%	75%	61%
<input type="checkbox"/> Summerhill School	80%	65%	38%	45%	81%	79%	78%	79%	65%	25%	36%	80%	77%	75%
<input type="checkbox"/> Ellowes Hall Sports College	80%	61%	66%	60%	84%	89%	80%	80%	61%	66%	60%	84%	89%	80%
<input type="checkbox"/> Windsor High School and Sixth Form	77%	57%	34%	33%	82%	67%	71%	74%	53%	34%	31%	80%	66%	71%
<input type="checkbox"/> The Earls High School	70%	49%	55%	43%	75%	80%	79%	70%	49%	53%	36%	75%	79%	79%
<input type="checkbox"/> The Kingswinford School & Science College	73%	48%	45%	41%	77%	73%	74%	73%	48%	45%	41%	76%	73%	73%
<input type="checkbox"/> The Hillcrest School and Community College	57%	44%	22%	40%	65%	56%	61%	57%	44%	22%	40%	65%	56%	61%
<input type="checkbox"/> The Crestwood School	68%	43%	40%	33%	77%	73%	60%	68%	43%	40%	33%	77%	73%	58%
<input type="checkbox"/> Pedmore Technology College and Community School	60%	39%	32%	38%	74%	52%	61%	60%	39%	32%	38%	74%	52%	61%
<input type="checkbox"/> The Wordsley School Business & Enterprise & Music College	54%	39%	35%	27%	62%	63%	62%	53%	39%	35%	27%	61%	60%	61%
<input type="checkbox"/> Castle High School and Visual Arts College	50%	38%	26%	26%	59%	52%	62%	49%	37%	26%	26%	59%	52%	62%
<input type="checkbox"/> Redhill School and Specialist Language College <span style="font-size: small;"> ⓘ</span>	70%	37%	45%	42%	75%	82%	83%	69%	37%	45%	42%	73%	82%	82%
<input type="checkbox"/> Ridgewood High School	60%	36%	28%	33%	66%	60%	66%	60%	36%	28%	33%	66%	60%	65%
<input type="checkbox"/> Leasowes High School	53%	31%	39%	32%	63%	65%	61%	53%	31%	39%	32%	63%	65%	61%
<input type="checkbox"/> The Holly Hall Academy	42%	28%	22%	33%	53%	51%	62%	42%	28%	22%	33%	53%	51%	62%
<input type="checkbox"/> The Dormston School	56%	28%	17%	25%	64%	40%	66%	55%	26%	17%	25%	63%	40%	66%
<input type="checkbox"/> The High Arcal School	48%	29%	22%	35%	55%	45%	54%	47%	25%	22%	33%	55%	45%	54%
<input type="checkbox"/> Thorns Community College	50%	24%	39%	37%	59%	62%	60%	50%	24%	36%	35%	59%	61%	57%
<input type="checkbox"/> The Coseley School	44%	23%	29%	34%	56%	45%	49%	42%	22%	29%	34%	55%	45%	48%

# Pupil Premium Performance Tables

<http://www.education.gov.uk/schools/performance/>

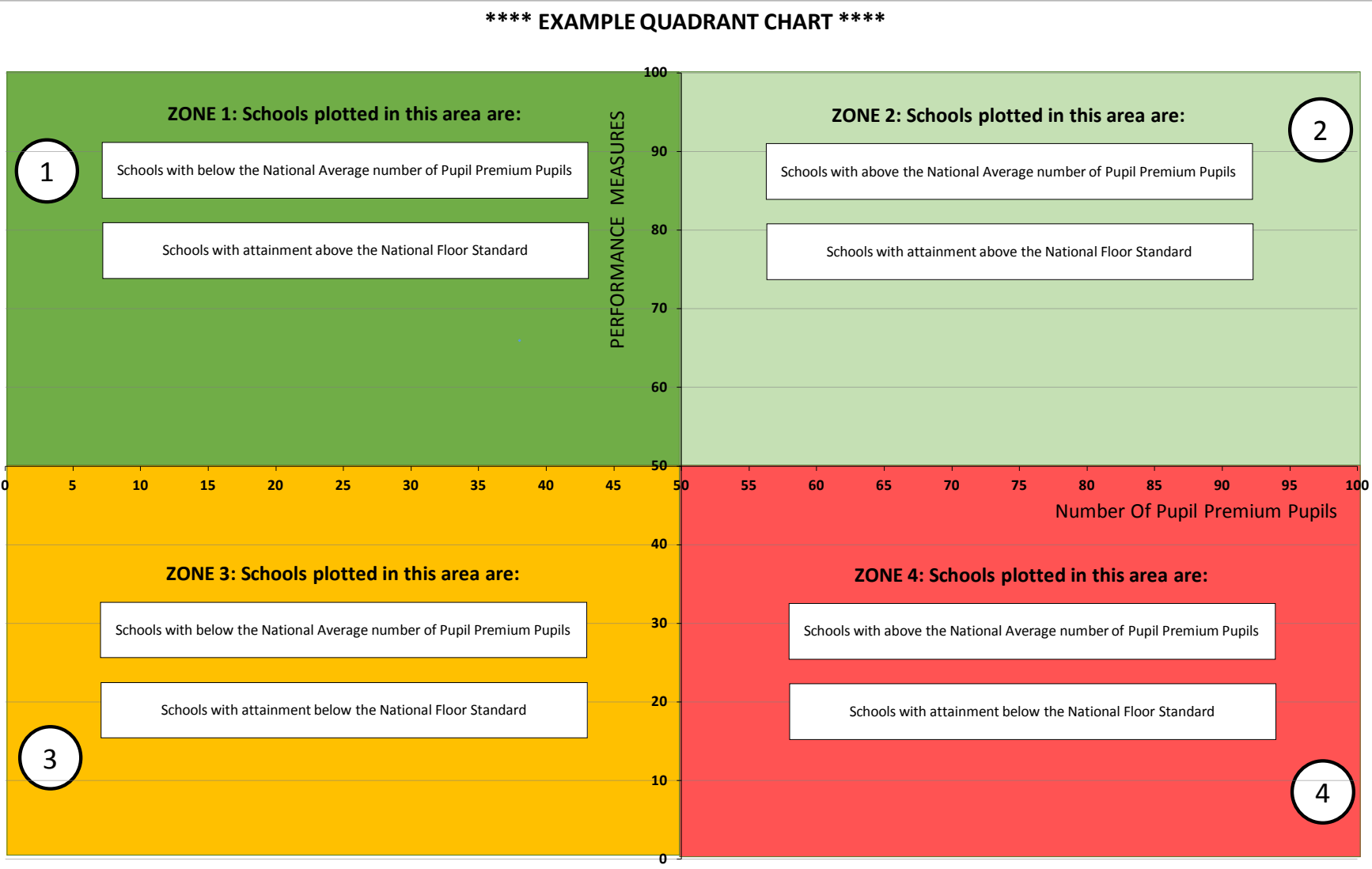
School name	% achieving A*-C in English and maths GCSEs							% achieving 5+ A*-C GCSEs (or equivalent) including English and maths GCSEs						
	All pupils	Disadvantaged pupils			Other pupils			All pupils	Disadvantaged pupils			Other pupils		
		2013	2012	2011	2013	2012	2011		2013	2012	2011	2013	2012	2011
<b>England - all schools</b>	60.0%	NA	NA	NA	NA	NA	NA	59.2%	NA	NA	NA	NA	NA	NA
<b>England - state funded schools only</b>	61.3%	41.8%	39.1%	37.0%	68.5%	66.1%	65.8%	60.6%	41.0%	38.5%	36.4%	67.9%	65.7%	65.3%
<b>Local Authority</b>	60.4%	36.1%	31.6%	33.8%	68.7%	64.7%	67.0%	59.7%	35.3%	31.2%	33.0%	68.0%	64.2%	66.2%
<b>Schools</b> (tick the box next to a school/college to select it for comparison - once you have selected all required schools/colleges <a href="#">click here; Compare</a> )														
<input type="checkbox"/> Bishop Milner Catholic School <sup>1</sup>	77%	69%	39%	55%	78%	76%	61%	76%	69%	39%	55%	77%	75%	61%
<input type="checkbox"/> Summerhill School	80%	65%	38%	45%	81%	79%	78%	79%	65%	25%	36%			
<input type="checkbox"/> Ellowes Hall Sports College	80%	61%	66%	60%	84%	89%	80%	80%	61%	66%	60%			
<input type="checkbox"/> Windsor High School and Sixth Form	77%	57%	34%	33%	82%	67%	71%	74%	53%	34%	31%			
<input type="checkbox"/> The Earls High School	70%	49%	55%	43%	75%	80%	79%	70%	49%	53%	36%			
<input type="checkbox"/> The Kingswinford School & Science College	73%	48%	45%	41%	77%	73%	74%	73%	48%	45%	41%			
<input type="checkbox"/> The Hillcrest School and Community College	57%	44%	22%	40%	65%	56%	61%	57%	44%	22%	40%	65%	56%	61%
<input type="checkbox"/> The Crestwood School	68%	43%	40%	33%	77%	73%	60%	68%	43%	40%	33%	77%	73%	58%
<input type="checkbox"/> Pedmore Technology College and Community School	60%	39%	32%	38%	74%	52%	61%	60%	39%	32%	38%	74%	52%	61%
<input type="checkbox"/> The Wordsley School Business & Enterprise & Music College	54%	39%	35%	27%	62%	63%	62%	53%	39%	35%	27%	61%	60%	61%
<input type="checkbox"/> Castle High School and Visual Arts College	50%	38%	26%	26%	59%	52%	62%	49%	37%	26%	26%	59%	52%	62%
<input type="checkbox"/> Redhill School and Specialist Language College <sup>1</sup>	70%	37%	45%	42%	75%	82%	83%	69%	37%	45%	42%			
<input type="checkbox"/> Ridgewood High School	60%	36%	28%	33%	66%	60%	66%	60%	36%	28%	33%			
<input type="checkbox"/> Leasowes High School	53%	31%	39%	32%	63%	65%	61%	53%	31%	39%	32%			
<input type="checkbox"/> The Holly Hall Academy	42%	28%	22%	33%	53%	51%	62%	42%	28%	22%	33%			
<input type="checkbox"/> The Dormston School	56%	28%	17%	25%	64%	40%	66%	55%	26%	17%	25%			
<input type="checkbox"/> The High Arcal School	48%	29%	22%	35%	55%	45%	54%	47%	25%	22%	33%	55%	45%	54%
<input type="checkbox"/> Thorns Community College	50%	24%	39%	37%	59%	62%	60%	50%	24%	36%	35%	59%	61%	57%
<input type="checkbox"/> The Coseley School	44%	23%	29%	34%	56%	45%	49%	42%	22%	29%	34%	55%	45%	48%

**13 Pupil Premium Pupils (11%)**

**87 Pupil Premium pupils (45%)**

# How To Read The Quadrant Charts

\*\*\*\* EXAMPLE QUADRANT CHART \*\*\*\*



Increasing Number of Pupil Premium Pupils

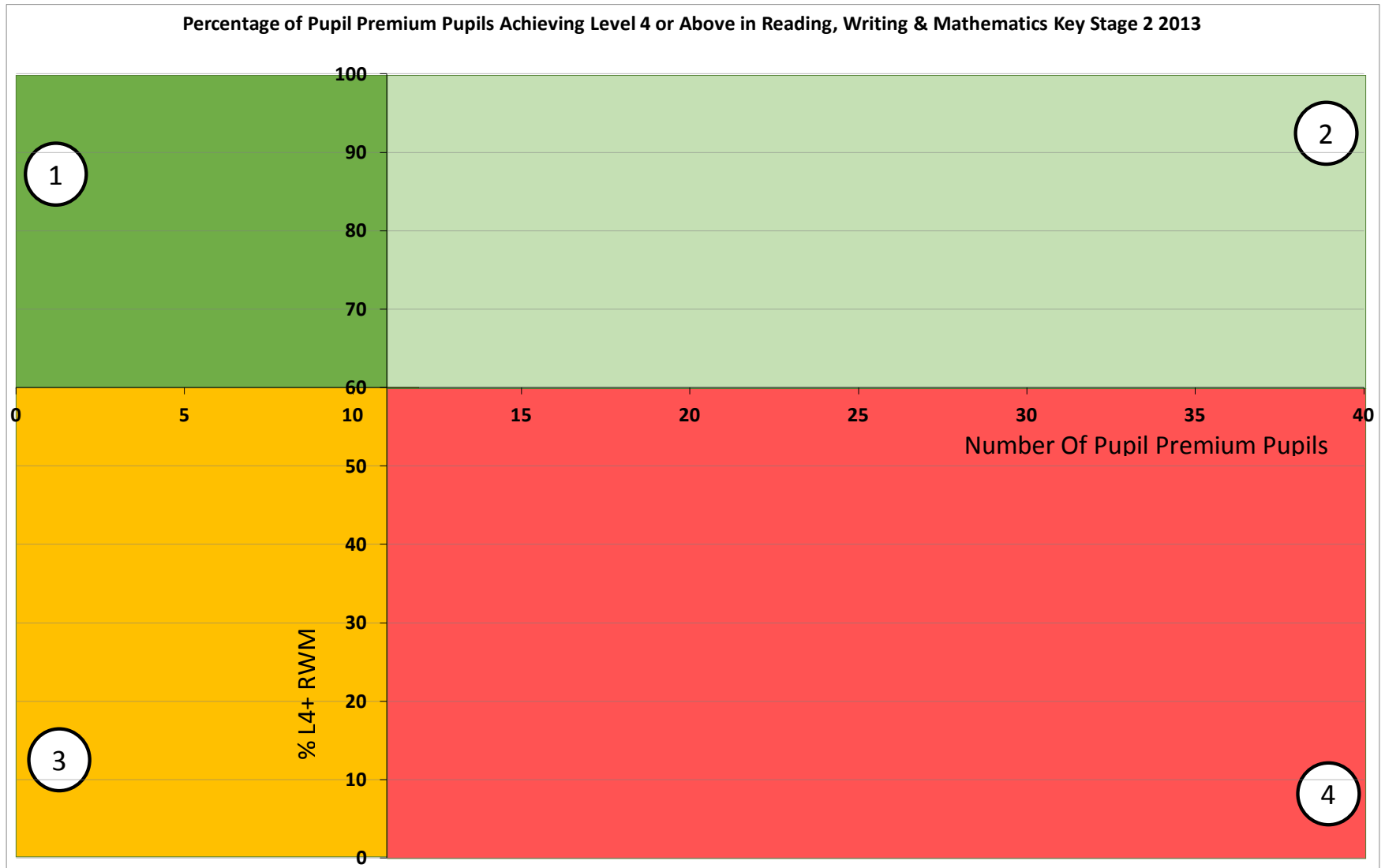


# Key Stage 2

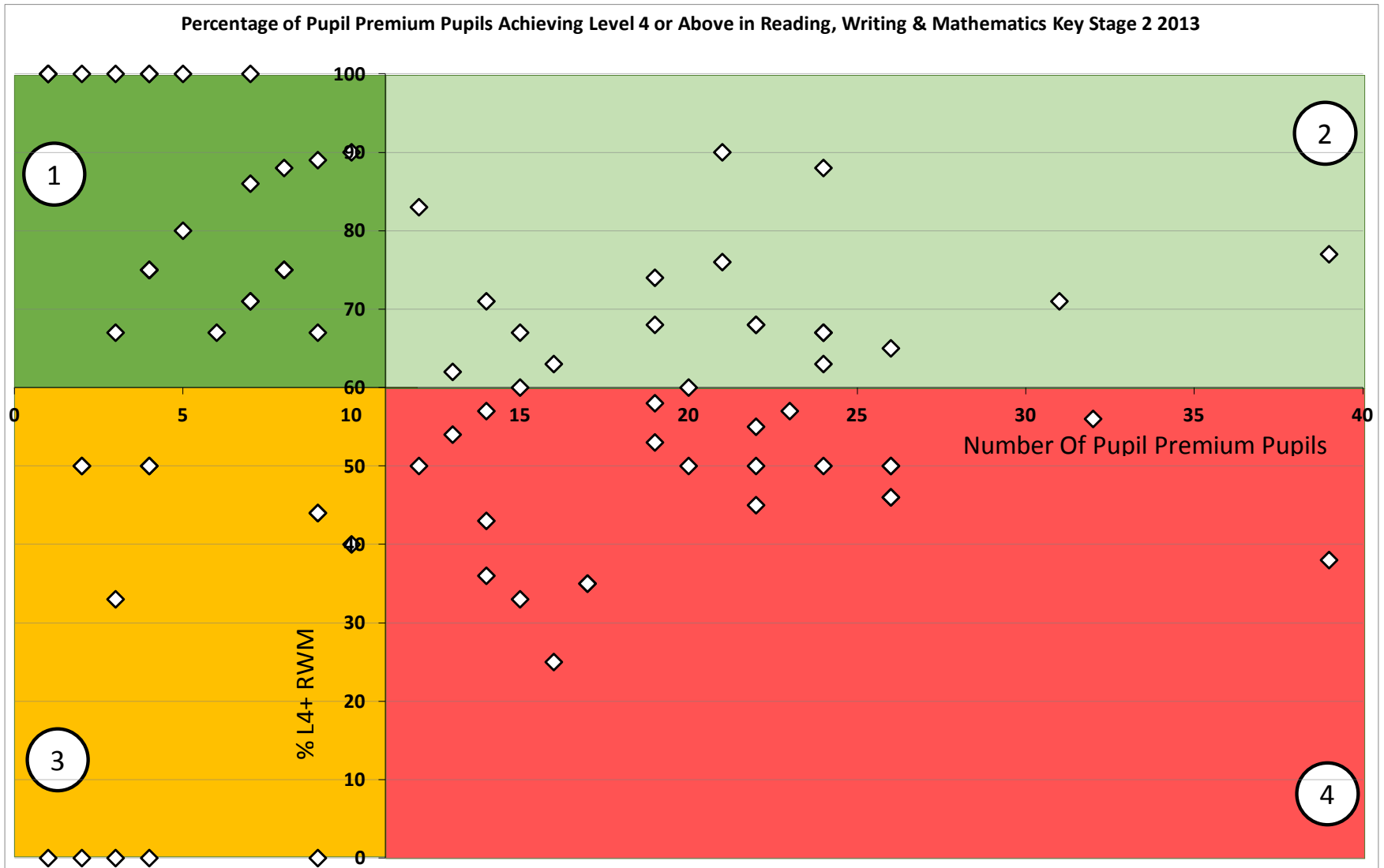
End Of Primary Phase Outcomes

*SATs Tests & Teacher Assessments*

# Key Stage 2 2013 Quadrant Chart

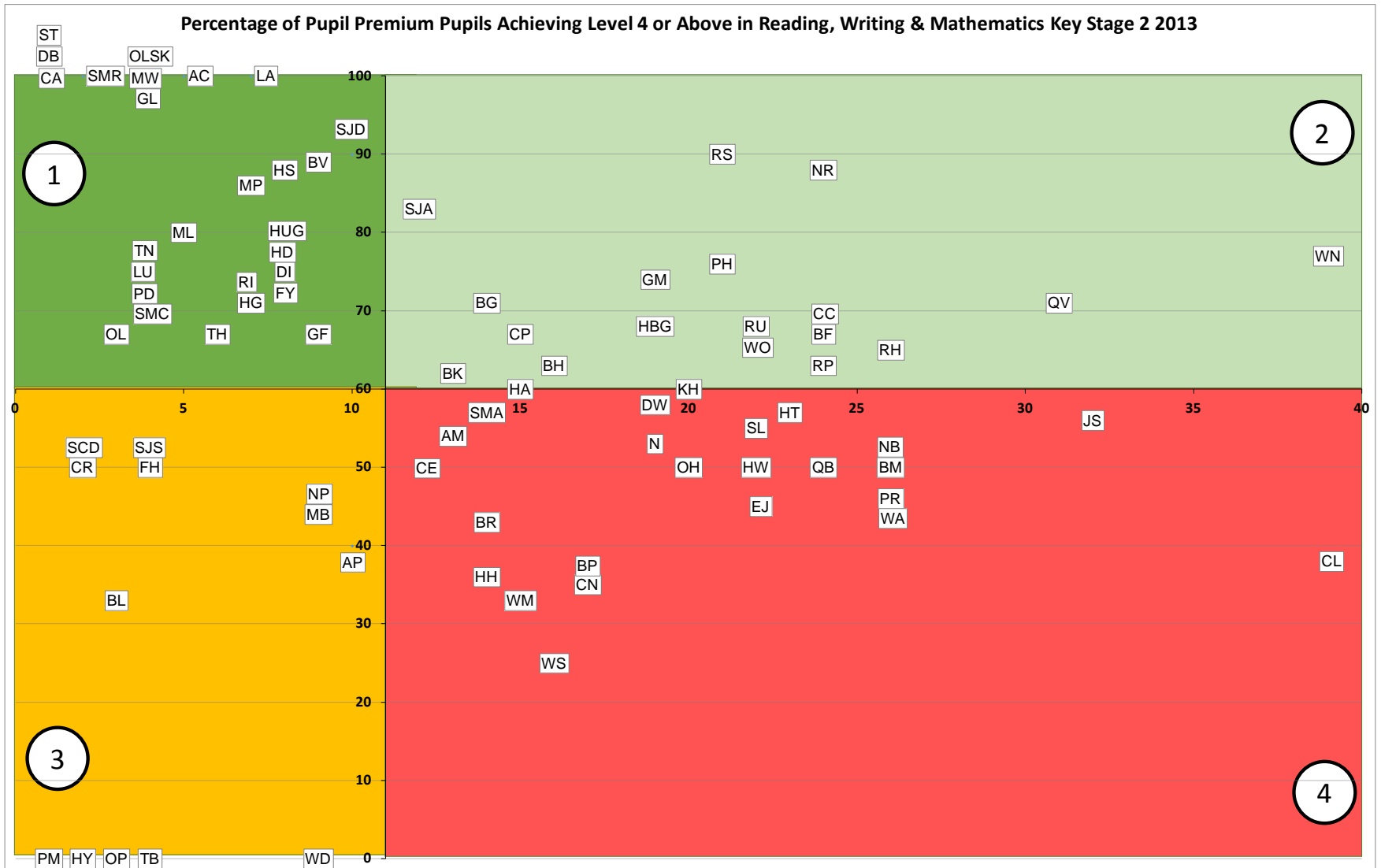


# Key Stage 2 2013 Quadrant Chart



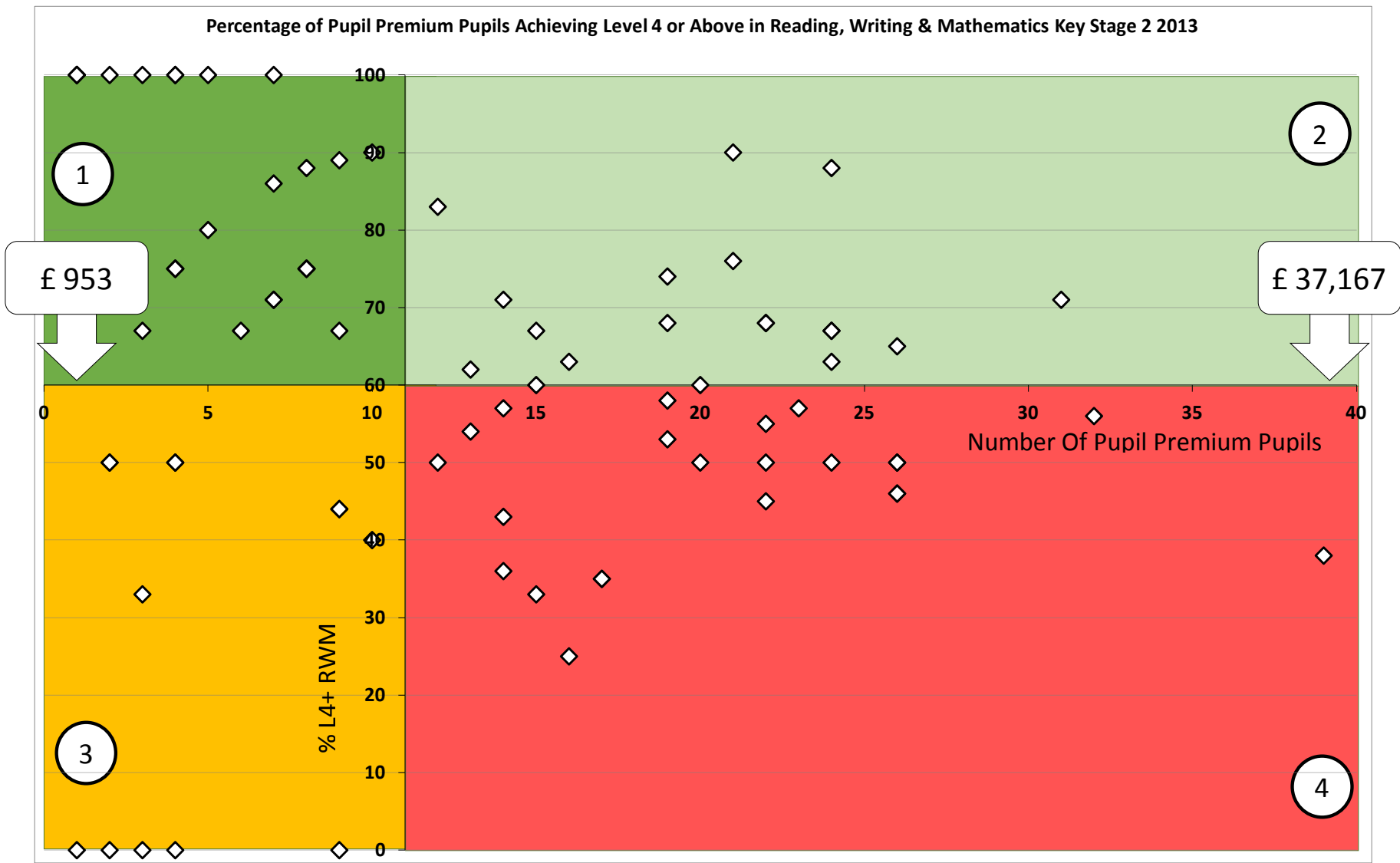


# Key Stage 2 2013 Quadrant Chart



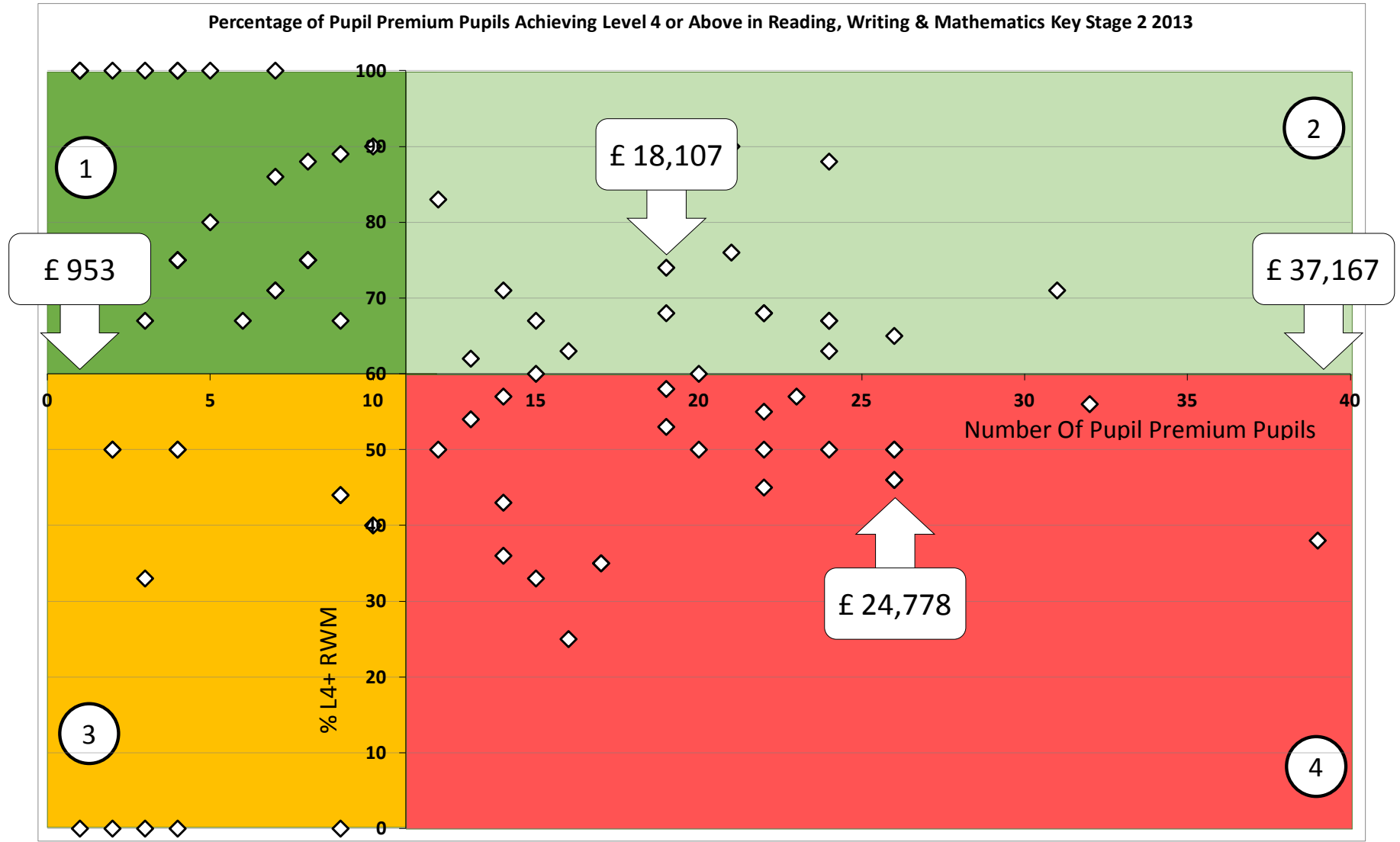
# Key Stage 2 2013 Quadrant Chart

Percentage of Pupil Premium Pupils Achieving Level 4 or Above in Reading, Writing & Mathematics Key Stage 2 2013

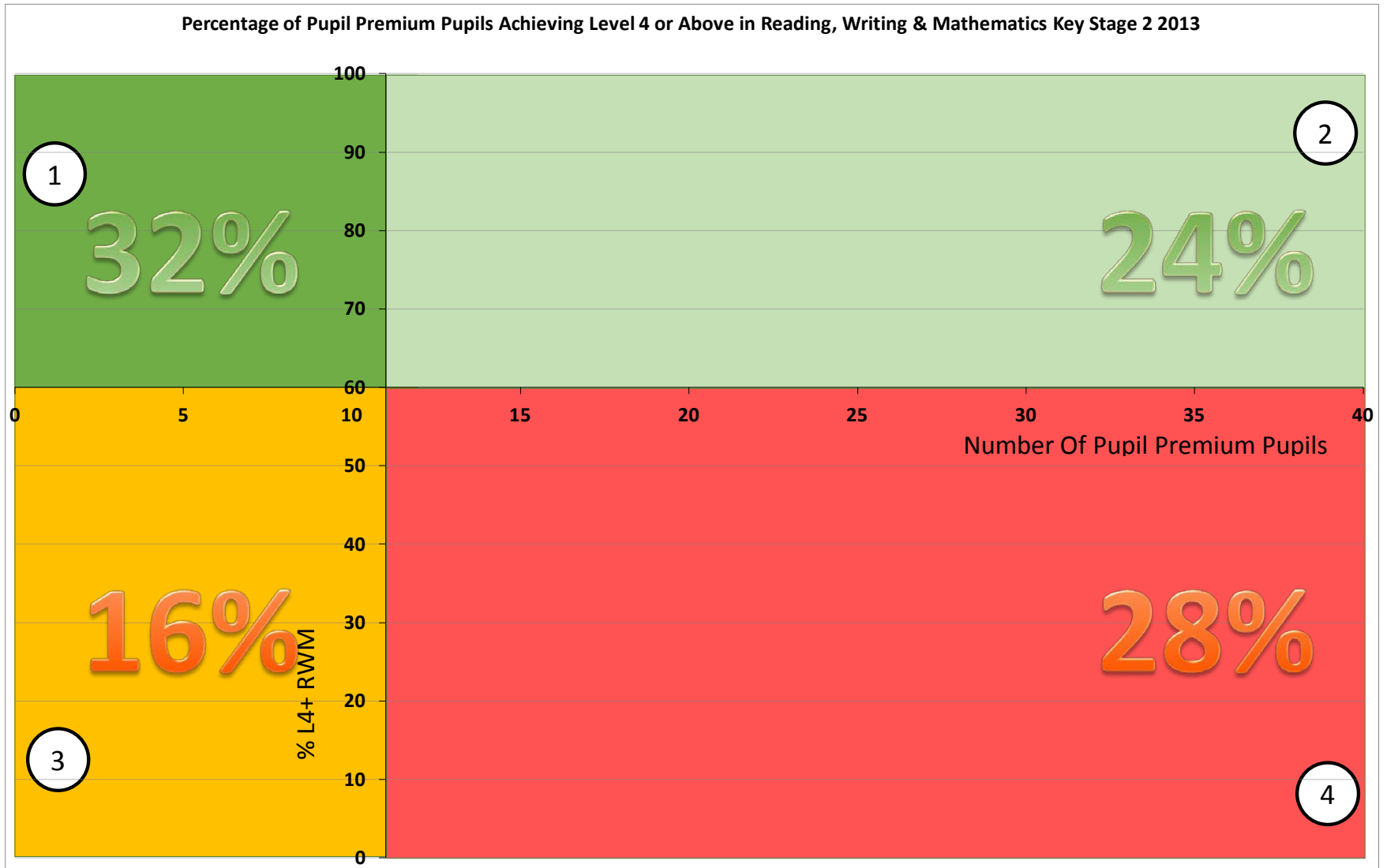


# Key Stage 2 2013 Quadrant Chart

Percentage of Pupil Premium Pupils Achieving Level 4 or Above in Reading, Writing & Mathematics Key Stage 2 2013



# Key Stage 2 2013 Quadrant Chart



2014

Key Stage 2

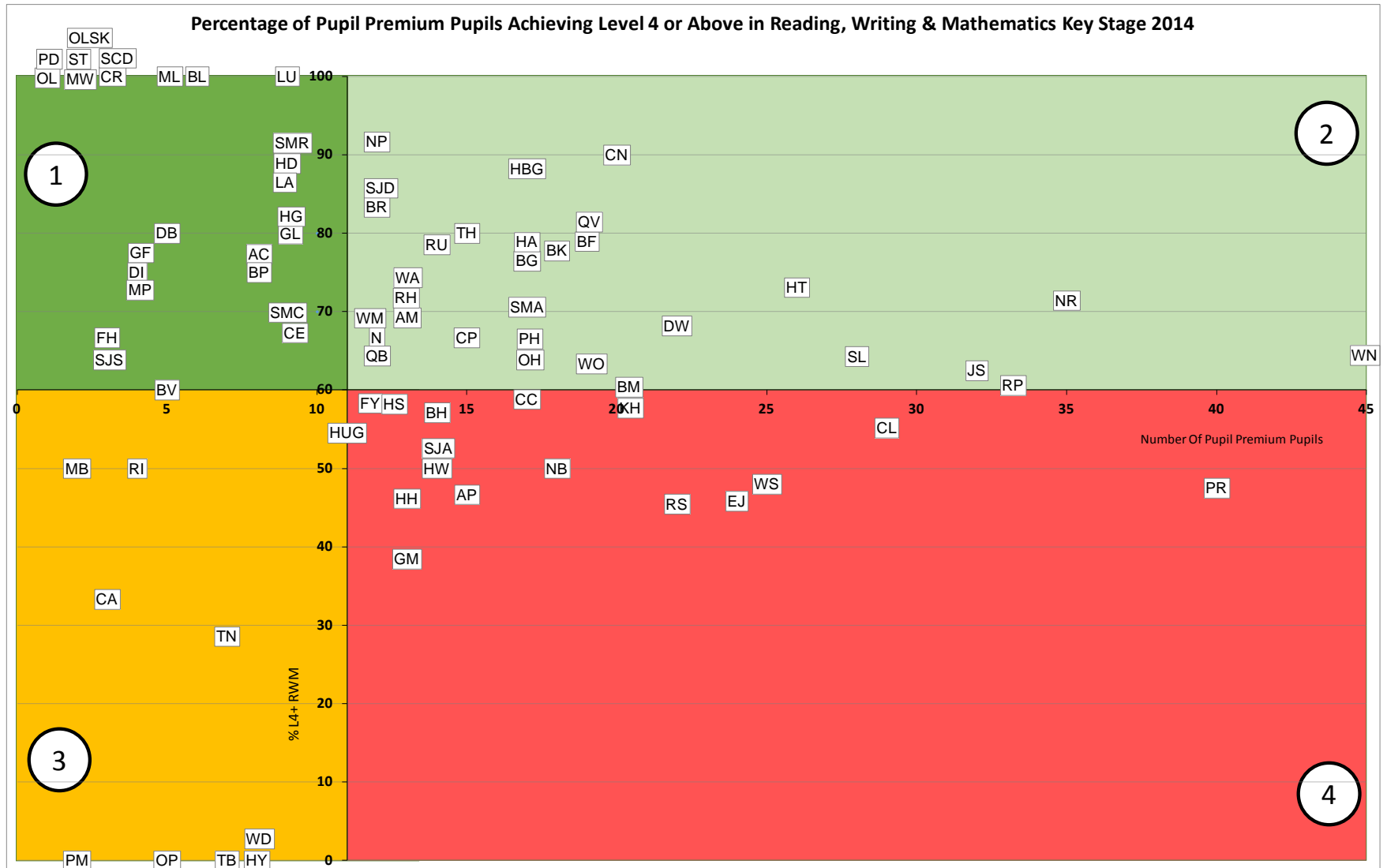
PROVISIONAL

Results

# PROVISIONAL Key Stage 2 2014 Quadrant Chart

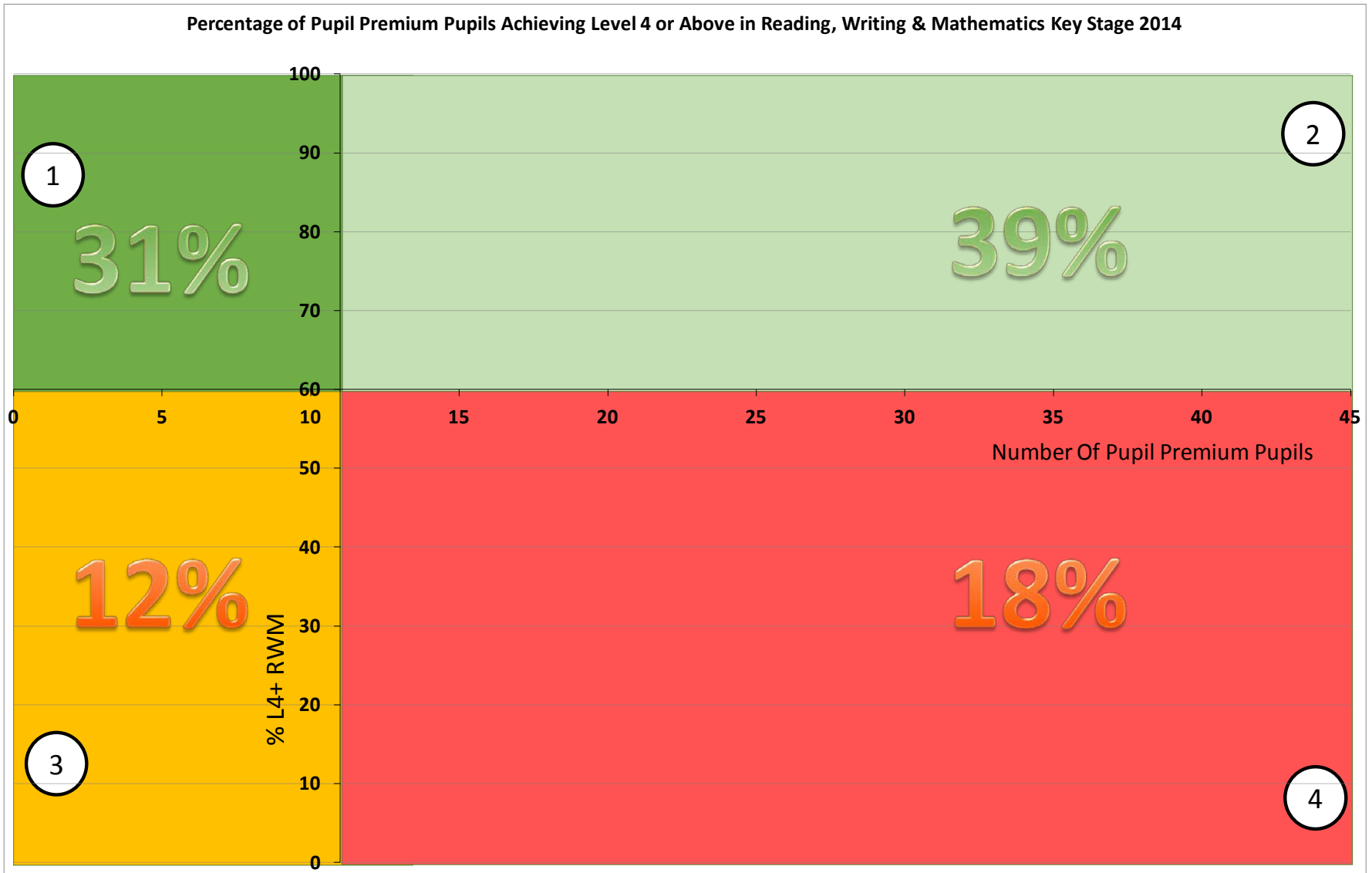


# PROVISIONAL Key Stage 2 2014 Quadrant Chart



# PROVISIONAL Key Stage 2 2014 Quadrant Chart

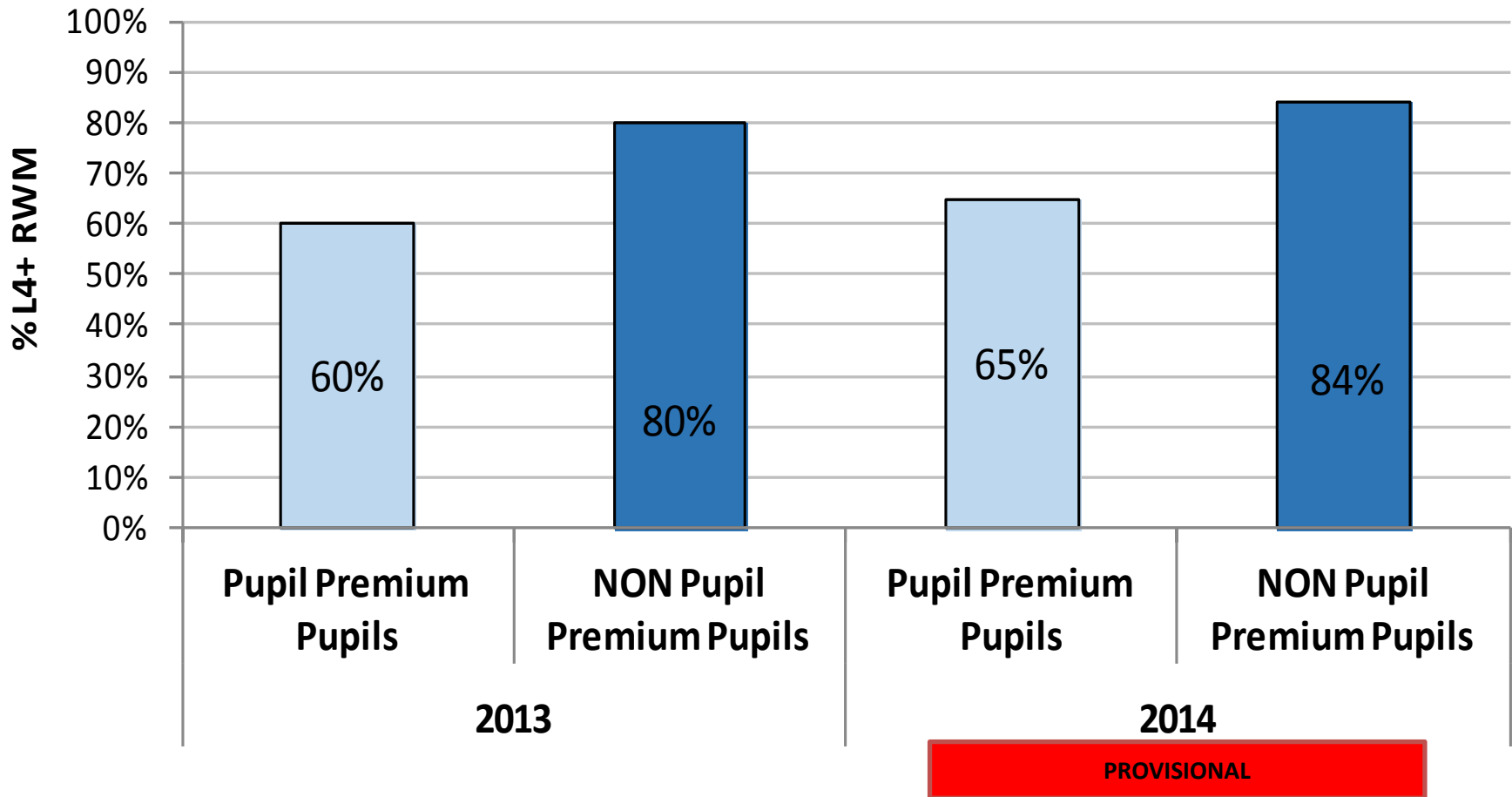
Percentage of Pupil Premium Pupils Achieving Level 4 or Above in Reading, Writing & Mathematics Key Stage 2014





# Key Stage 2 Attainment Dudley LA

## Key Stage 2 - Percentage Achieving Level 4 or above In Reading, Writing and Mathematics Dudley LA

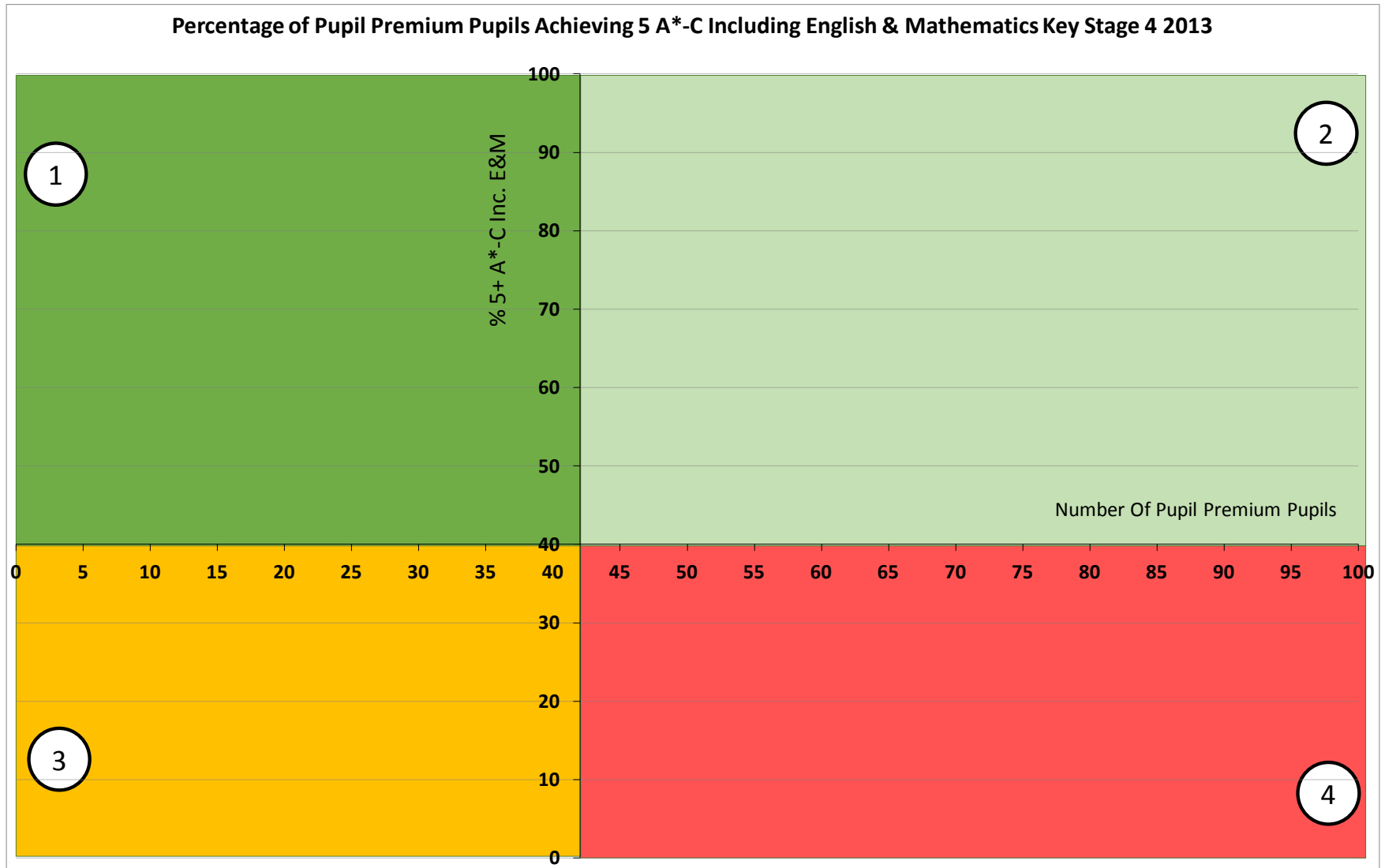


# Key Stage 4

End Of Secondary Phase Outcomes

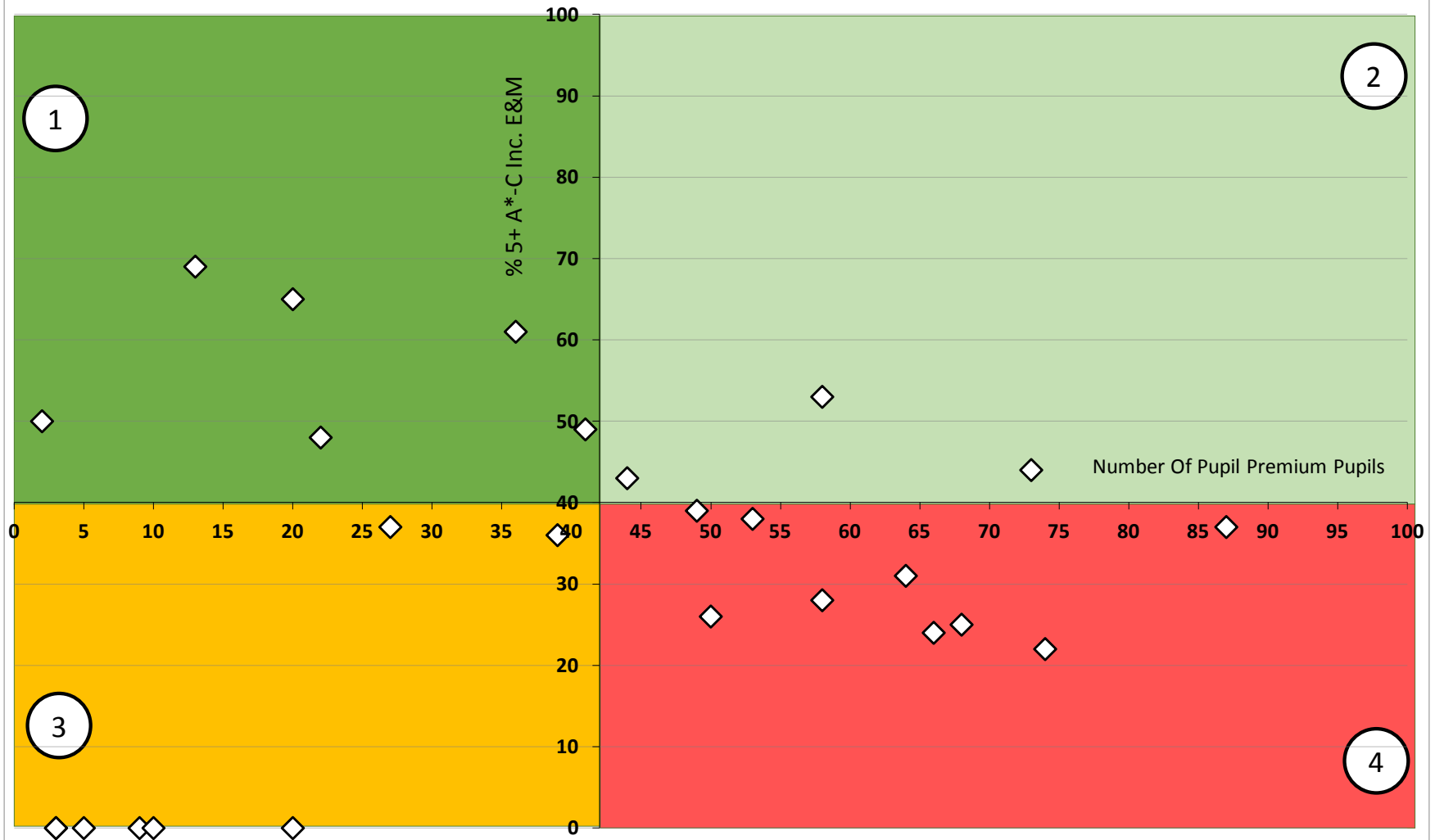
*GCSE & Equivalent Qualifications*

# Key Stage 4 2013 Quadrant Chart



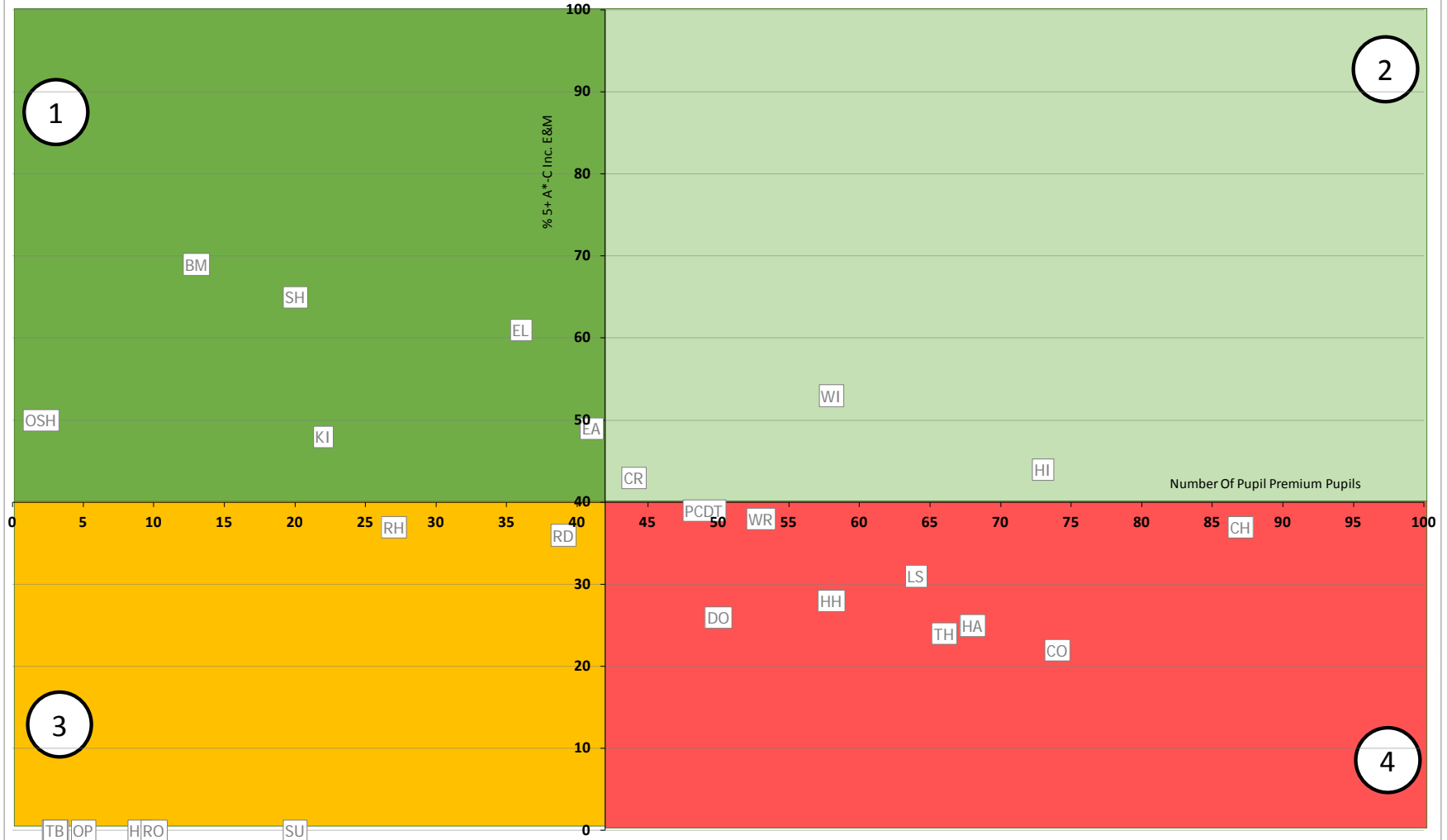
# Key Stage 4 2013 Quadrant Chart

Percentage of Pupil Premium Pupils Achieving 5 A\*-C Including English & Mathematics Key Stage 4 2013



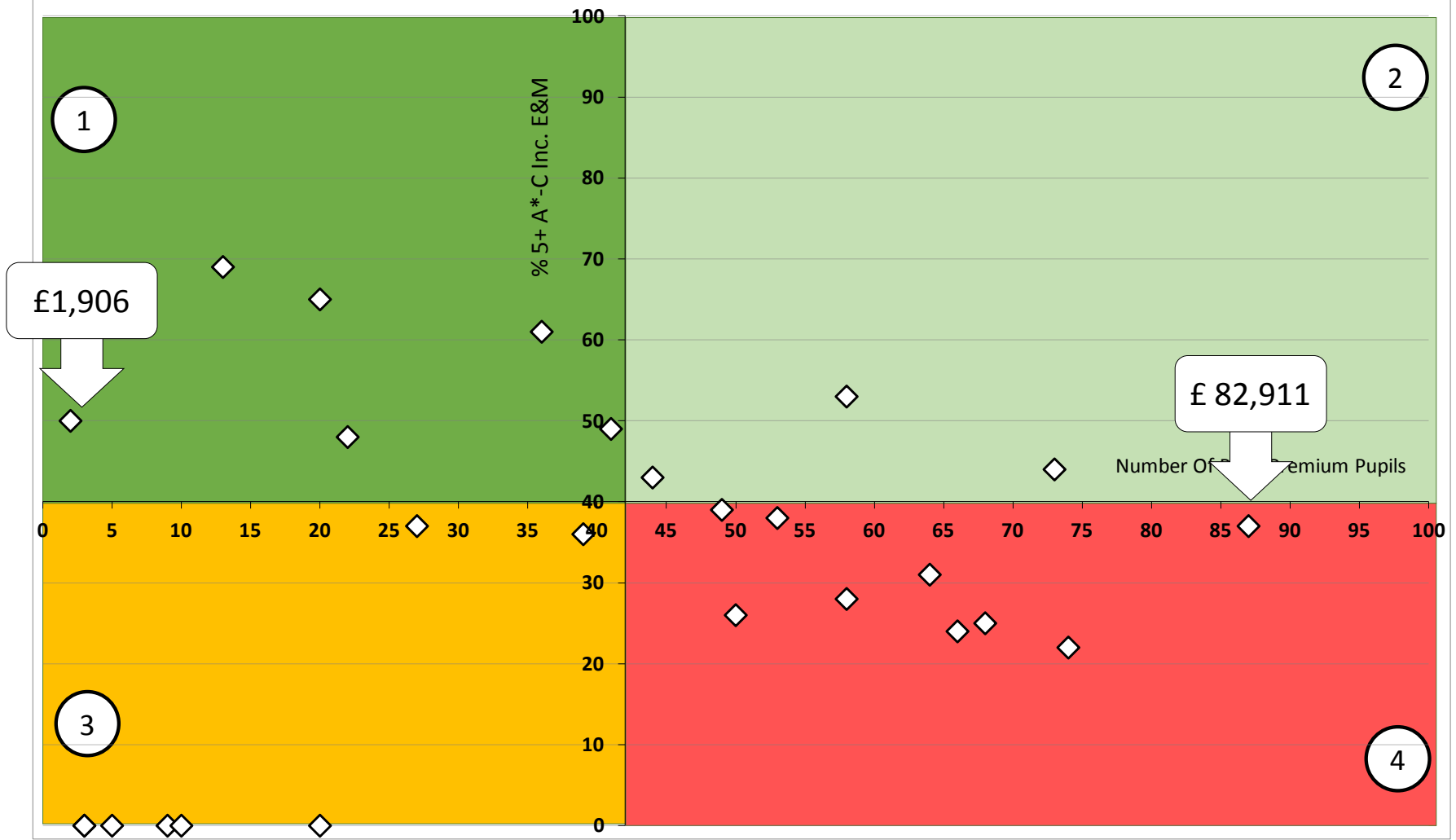
# Key Stage 4 2013 Quadrant Chart

Percentage of Pupil Premium Pupils Achieving 5 A\*-C Including English & Mathematics Key Stage 4 2013



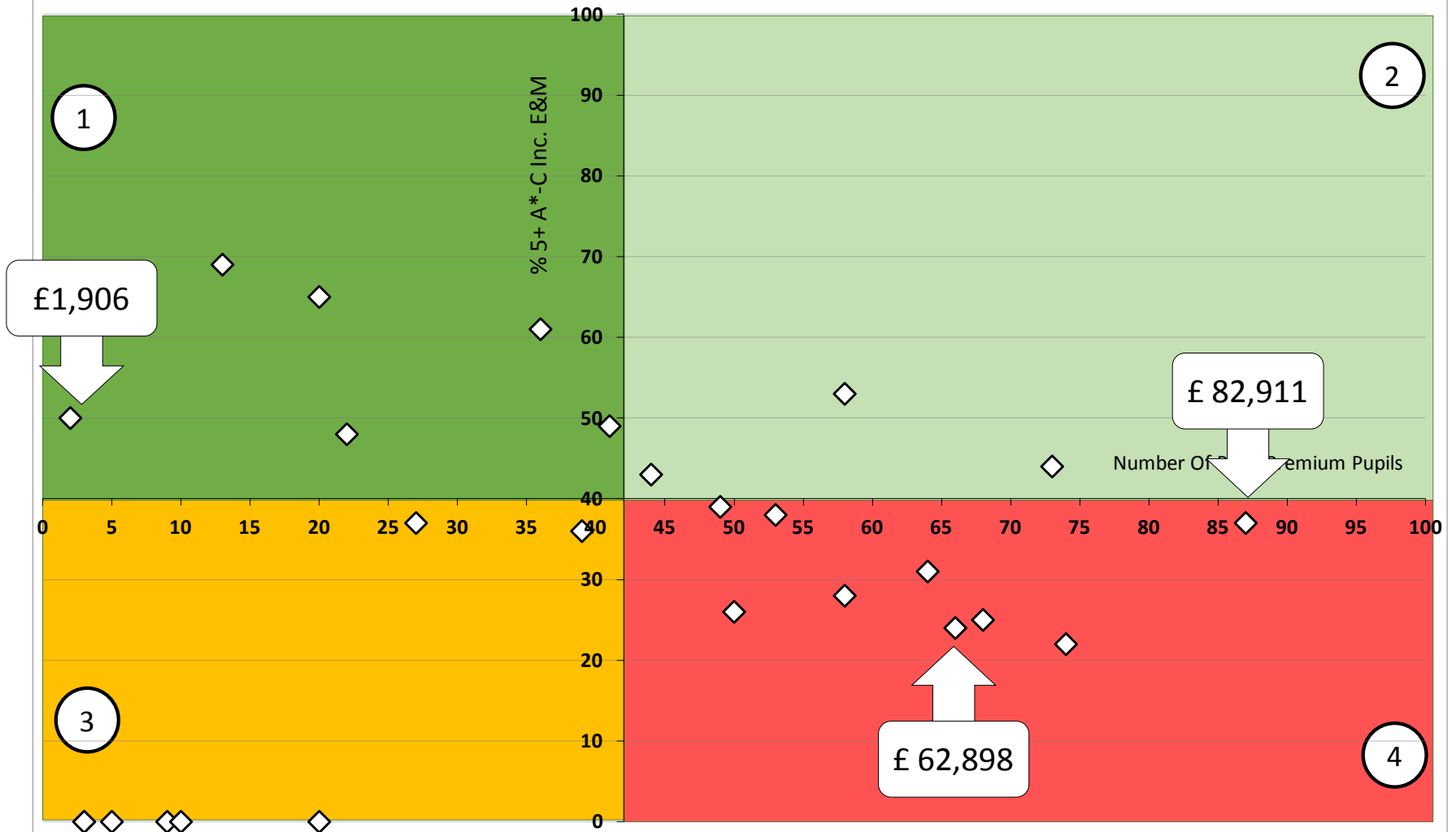
# Key Stage 4 2013 Quadrant Chart

Percentage of Pupil Premium Pupils Achieving 5 A\*-C Including English & Mathematics Key Stage 4 2013



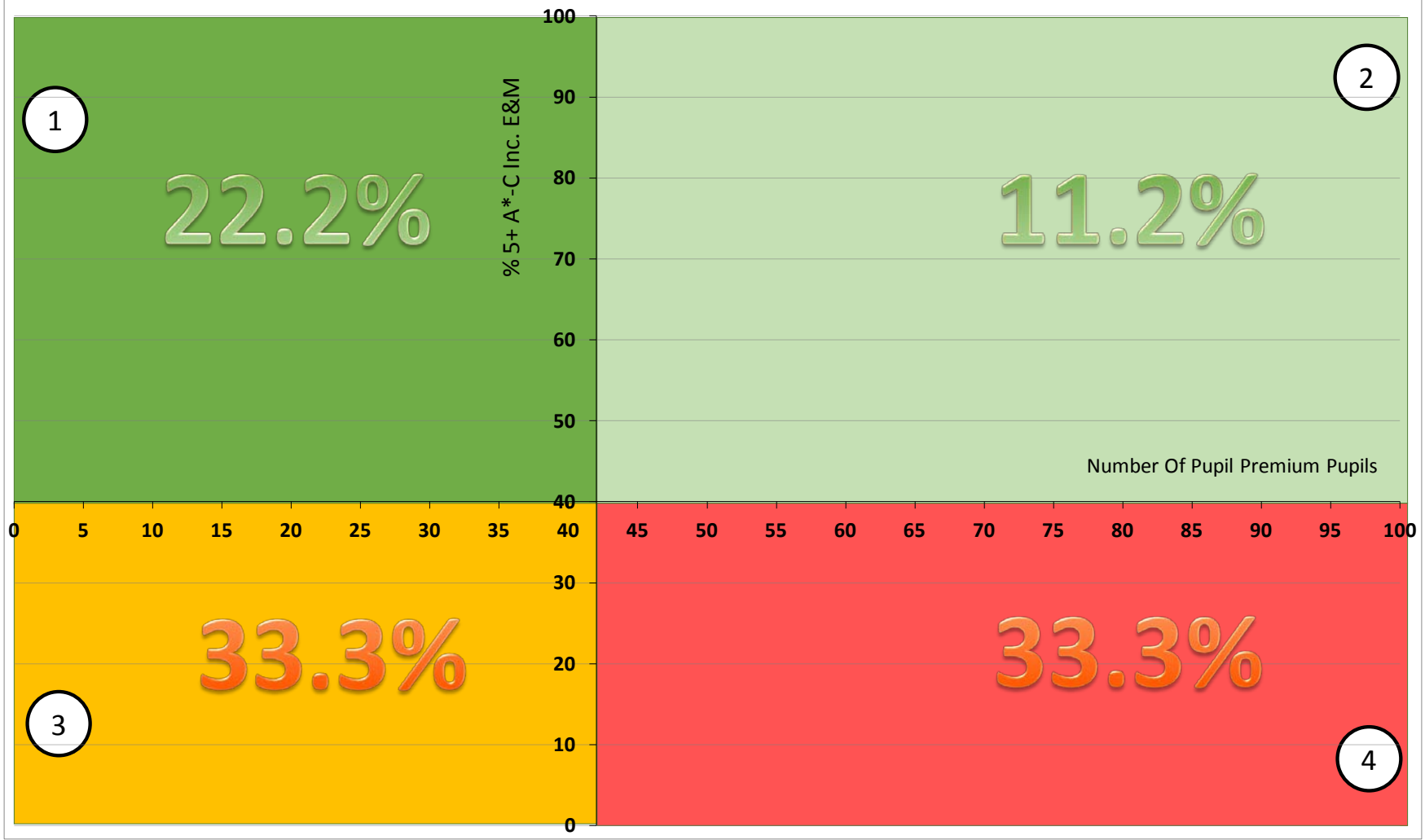
# Key Stage 4 2013 Quadrant Chart

Percentage of Pupil Premium Pupils Achieving 5 A\*-C Including English & Mathematics Key Stage 4 2013



# Key Stage 4 2013 Quadrant Chart

Percentage of Pupil Premium Pupils Achieving 5 A\*-C Including English & Mathematics Key Stage 4 2013





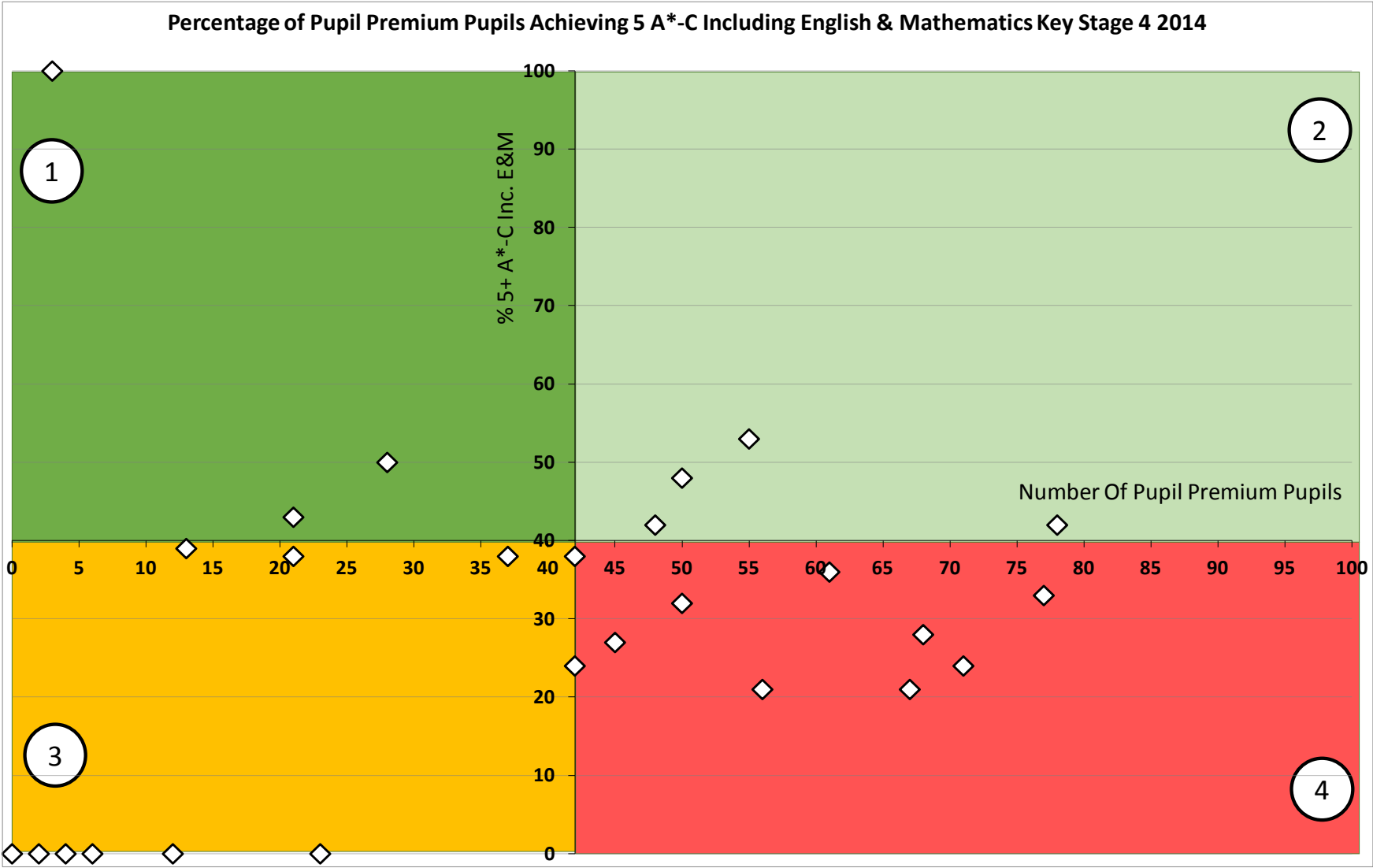
2014

Key Stage 4

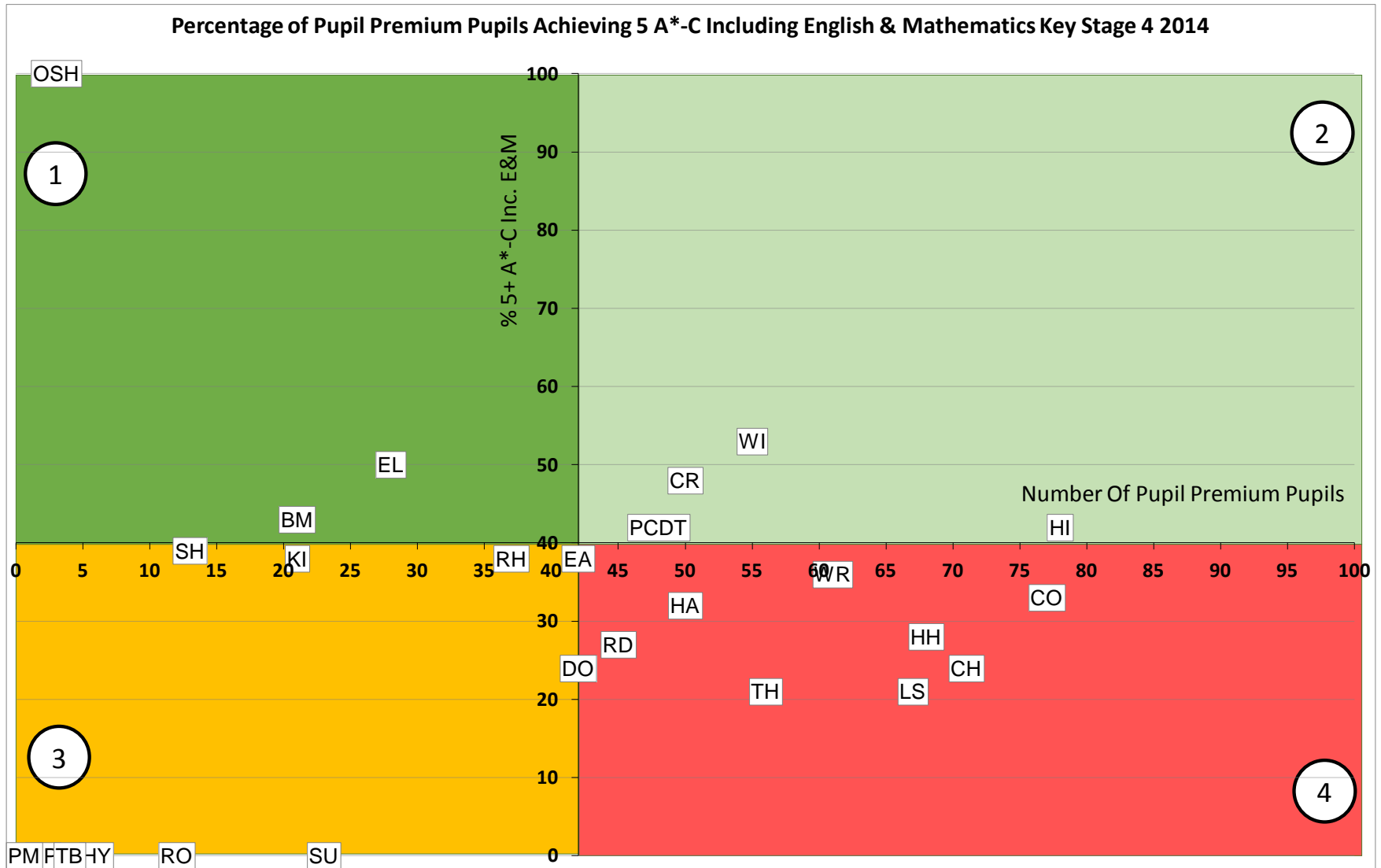
PROVISIONAL

Results

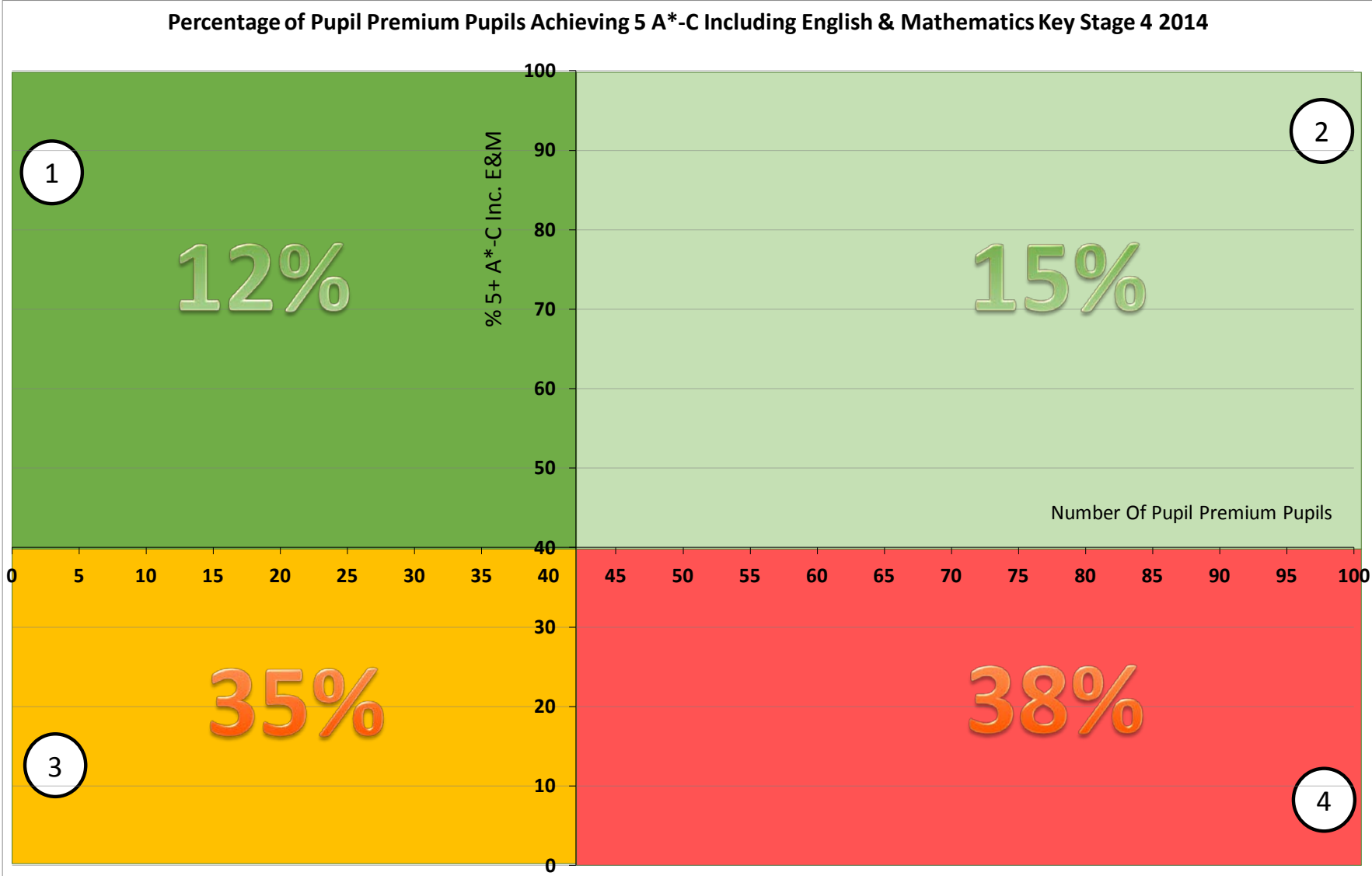
# PROVISIONAL Key Stage 4 2014 Quadrant Chart - BEST RESULT



# PROVISIONAL Key Stage 4 2014 Quadrant Chart - BEST RESULT



# PROVISIONAL Key Stage 4 2014 Quadrant Chart - BEST RESULT



# Key Stage 4 Attainment Dudley LA – Best Result

## Key Stage 4 - Percentage Achieving 5+ A\* - C inc. English & Mathematics Dudley LA

