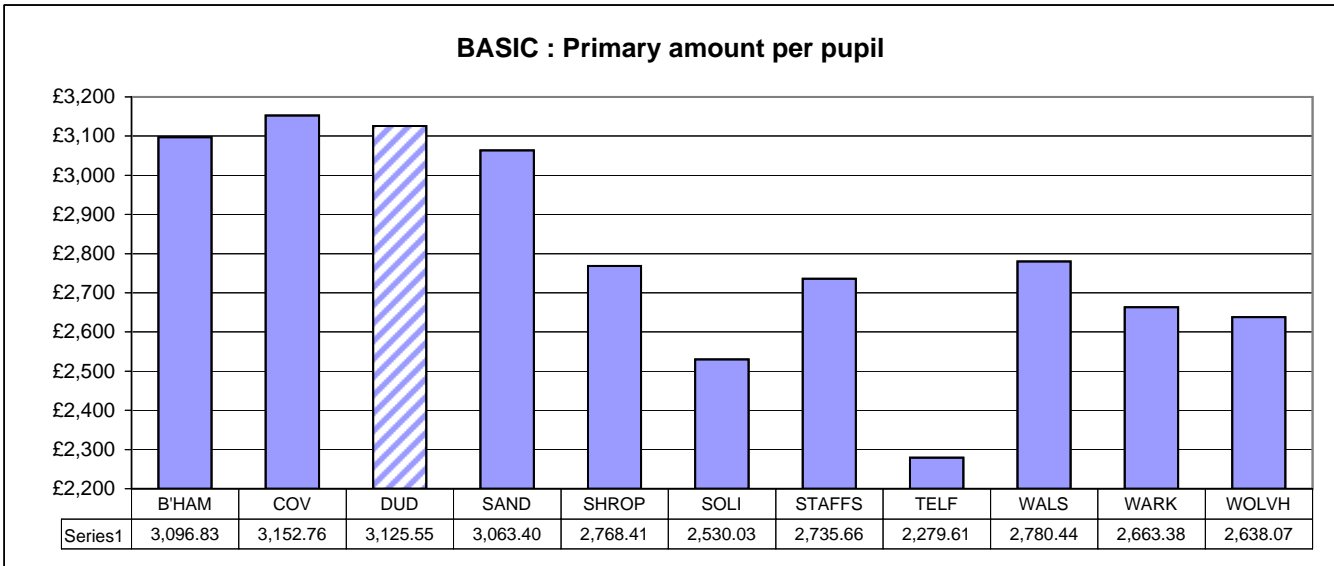
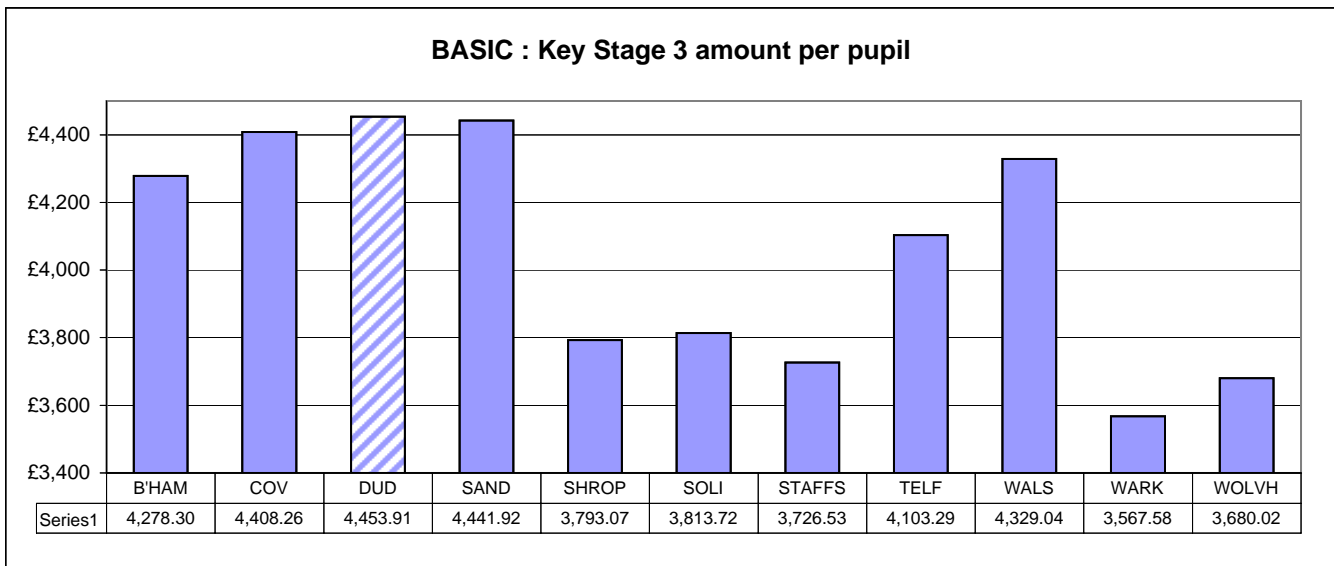


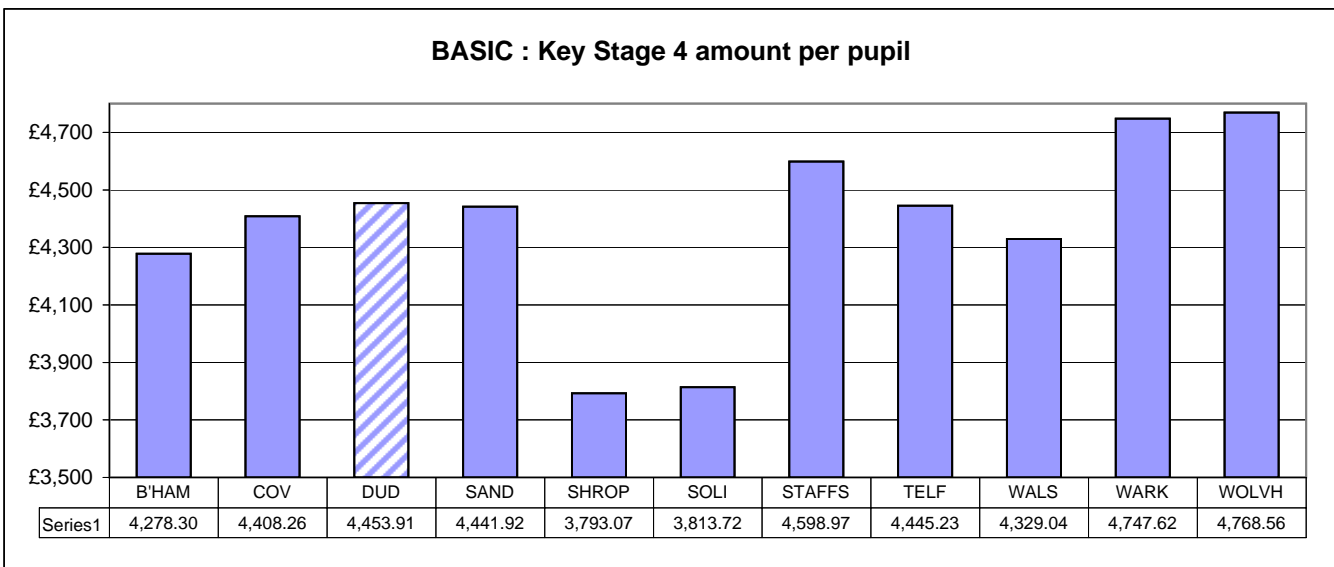
B'HAM = BIRMINGHAM	SAND = SANDWELL	STAFFS = STAFFORDSHIRE	WARK = WARWICKSHIRE
COV = COVENTRY	SHROP = SHROPSHIRE	TELF = TELFORD	WOLVH = WOLVERHAMPTON
DUD = DUDLEY	SOLI = SOLIHULL	WALS = WALSALL	



The graph identifies the basic amount per Primary pupil ranging from £2,279.61 to £3,152.76



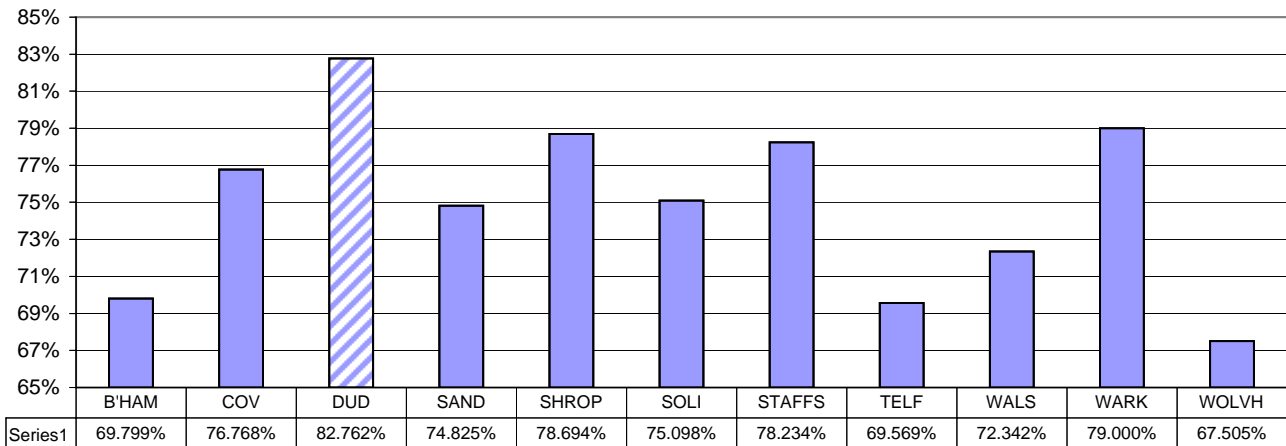
The graph identifies the basic amount per Key stage 3 pupils ranging from £3,567.58 to £4,453.91



The graph identifies the basic amount per Key stage 4 pupils ranging from £3,793.07 to £4,768.56

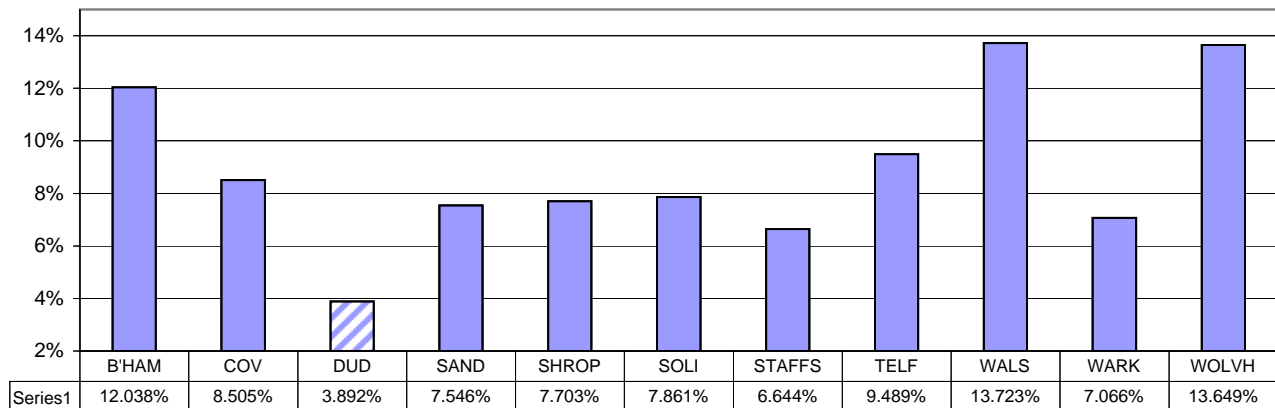
B'HAM = BIRMINGHAM	SAND = SANDWELL	STAFFS = STAFFORDSHIRE	WARK = WARWICKSHIRE
COV = COVENTRY	SHROP = SHROPSHIRE	TELF = TELFORD	WOLVH = WOLVERHAMPTON
DUD = DUDLEY	SOLI = SOLIHULL	WALS = WALSALL	

% of funding through Basic Entitlement



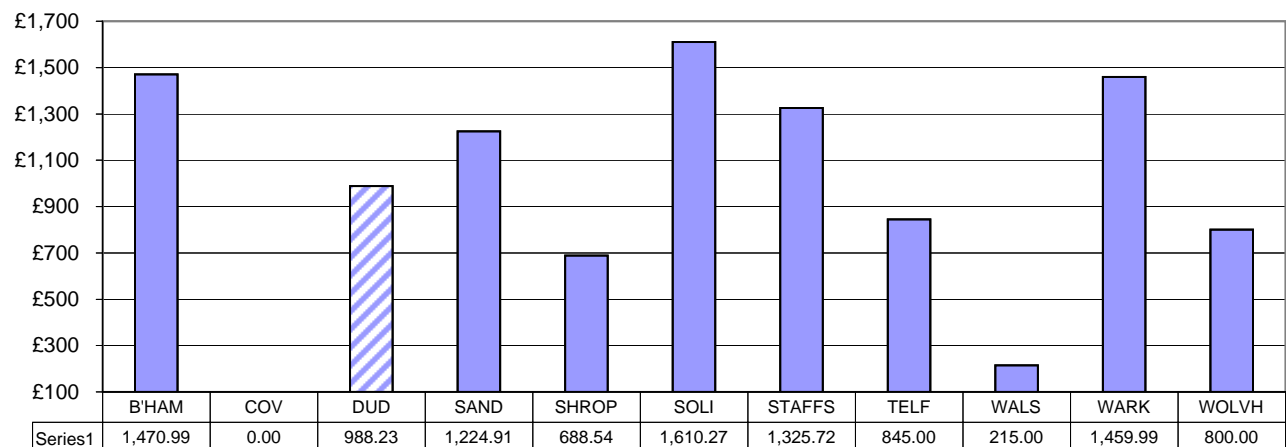
The graph identifies the % of funding targeted through basic ranging from 67.505% to 82.762%

% of funding through Deprivation



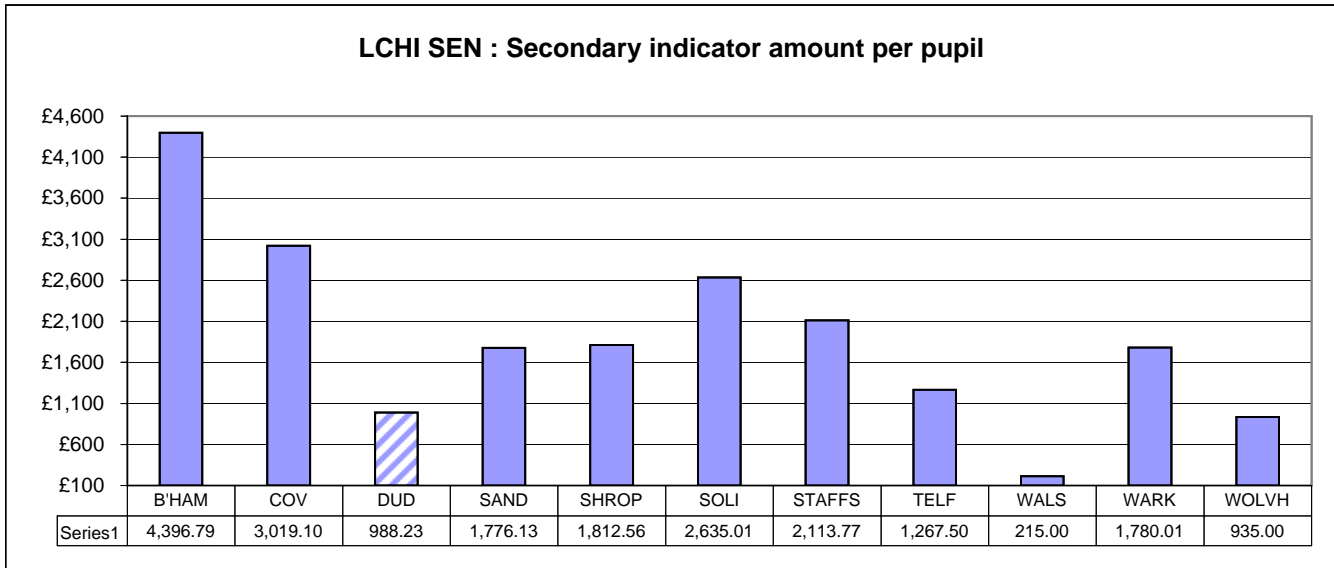
The graph identifies the % of funding targeted through Deprivation ranging from 3.892% to 13.723%

LCHI SEN : Primary indicator amount per pupil

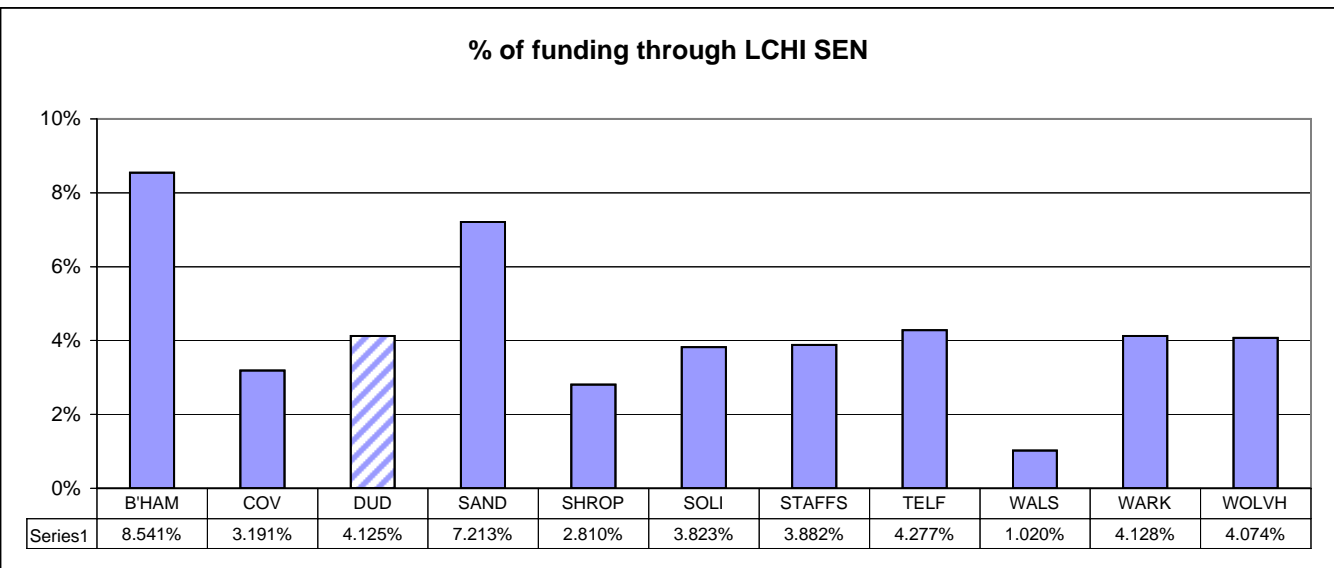


The graph identifies the amount per primary pupil for LCHI SEN ranging from £215.00 to £1,610.27
1 authority does not apply this methodology

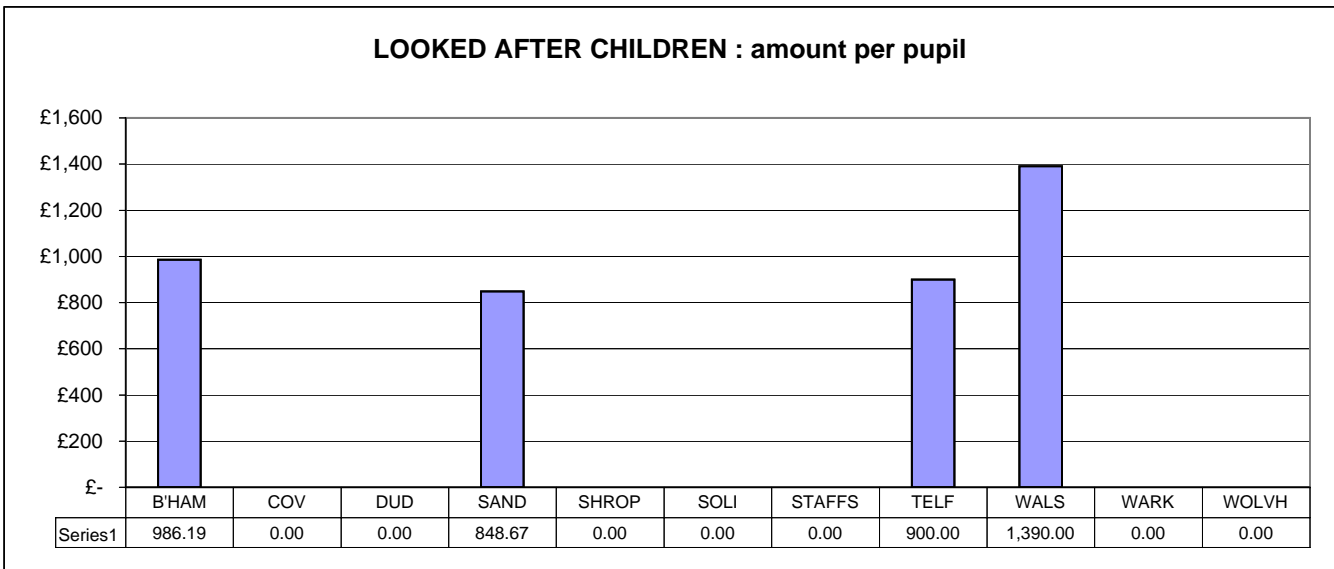
B'HAM = BIRMINGHAM	SAND = SANDWELL	STAFFS = STAFFORDSHIRE	WARK = WARWICKSHIRE
COV = COVENTRY	SHROP = SHROPSHIRE	TELF = TELFORD	WOLVH = WOLVERHAMPTON
DUD = DUDLEY	SOLI = SOLIHULL	WALS = WALSALL	



The graph identifies the amount per secondary pupil for LCHI SEN ranging from £215 to £4,396.79

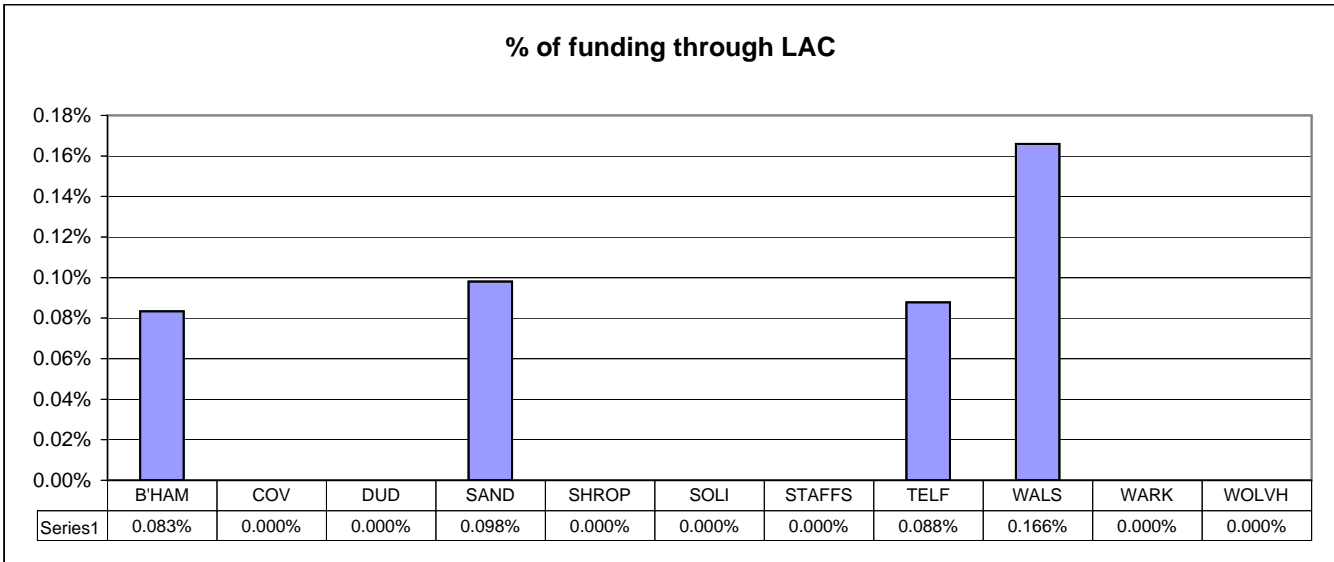


The graph identifies the % of funding targeted through LCHI SEN ranging from 1.02% to 8.54%

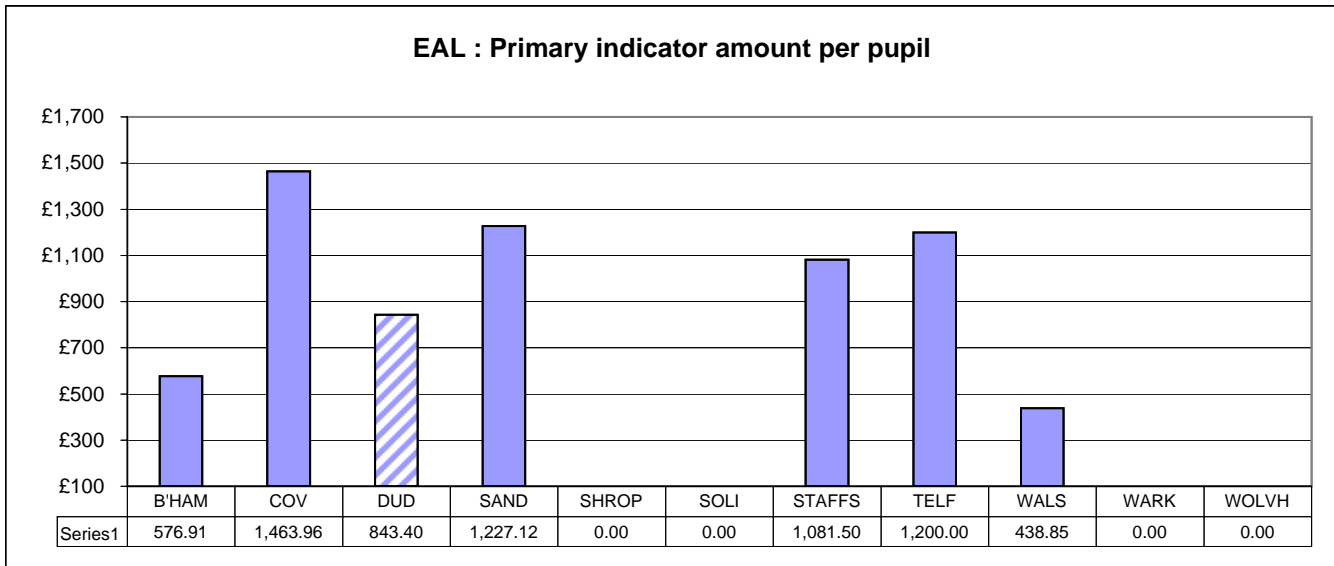


The graph identifies the amount per pupil through LAC ranging from £848.67 to £1,390. Only 4 authorities use this methodology.

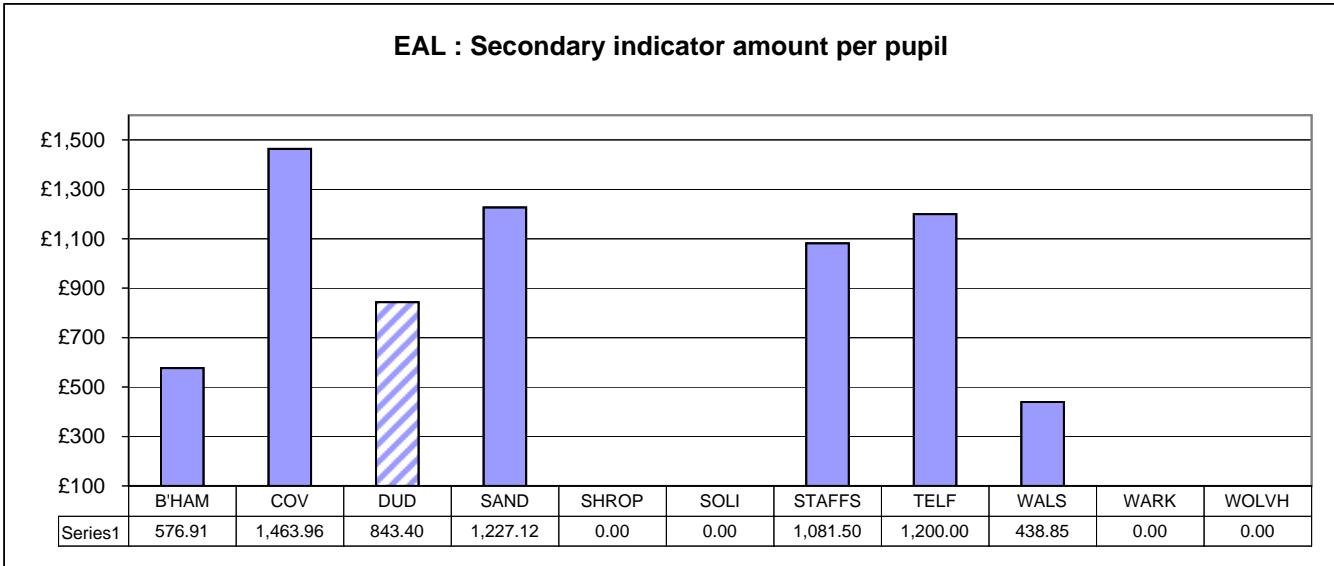
B'HAM = BIRMINGHAM	SAND = SANDWELL	STAFFS = STAFFORDSHIRE	WARK = WARWICKSHIRE
COV = COVENTRY	SHROP = SHROPSHIRE	TELF = TELFORD	WOLVH = WOLVERHAMPTON
DUD = DUDLEY	SOLI = SOLIHULL	WALS = WALSALL	



The graph identifies the % of funding targeted through LAC ranging from 0.083% to 0.166%
Only 4 authorities use this methodology.

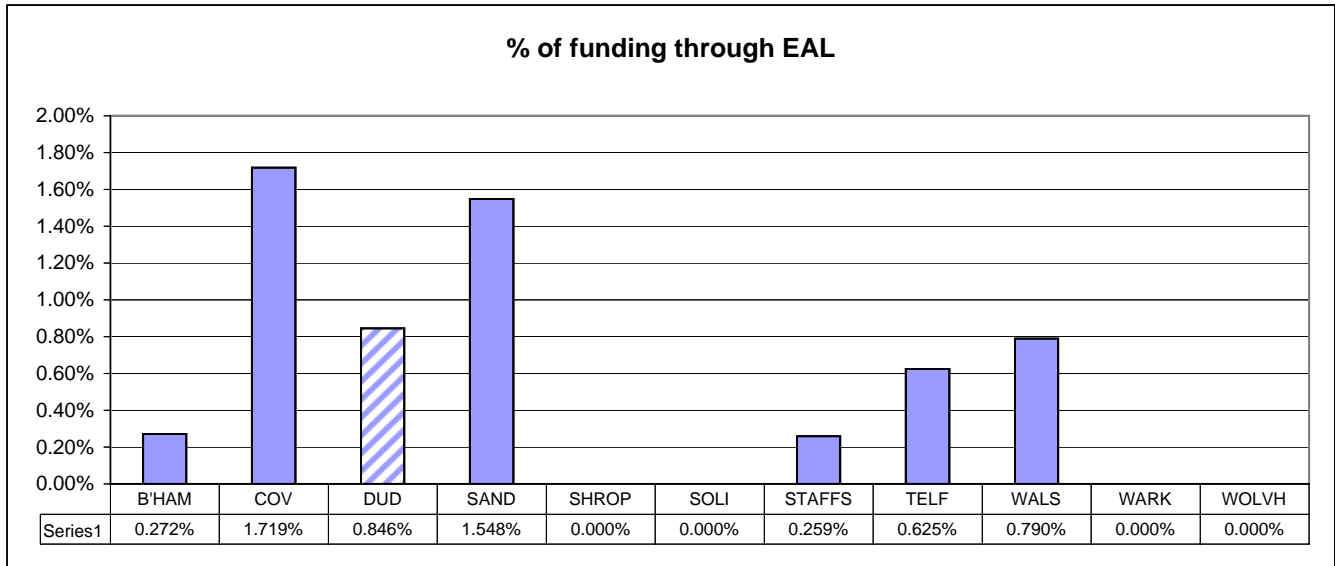


The graph identifies the amount per primary pupil through EAL ranging from £435.85 to £1,463.96
Only 7 authorities use this methodology.

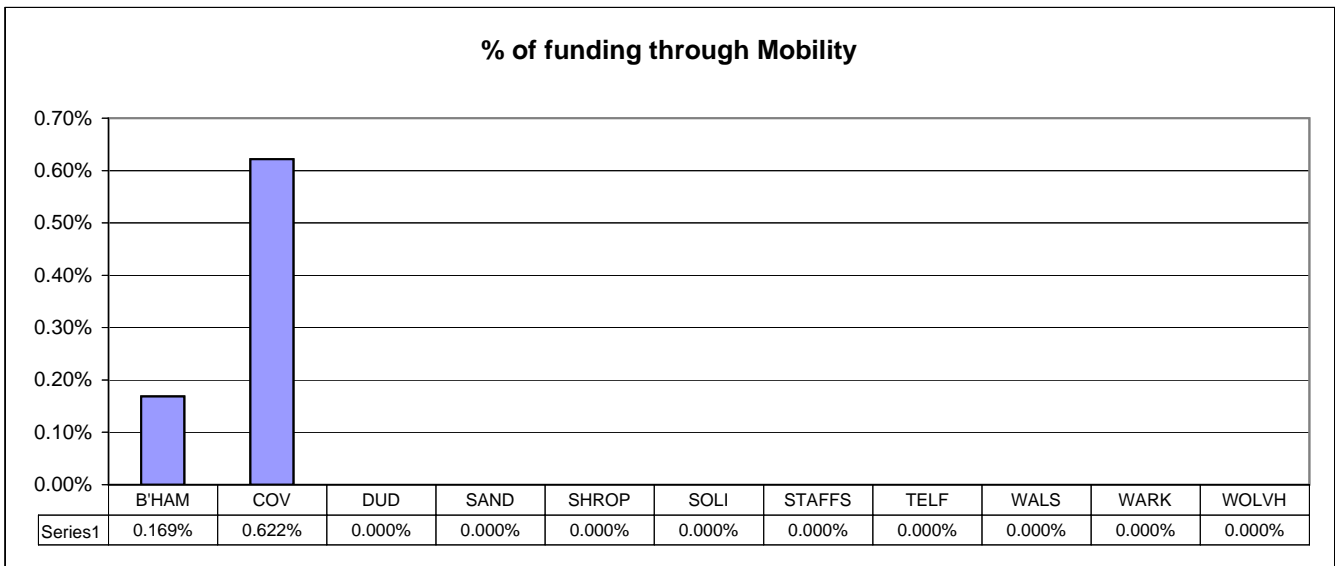


The graph identifies the amount per secondary pupil through EAL ranging from £435.85 to £1,463.96
Only 7 authorities use this methodology.

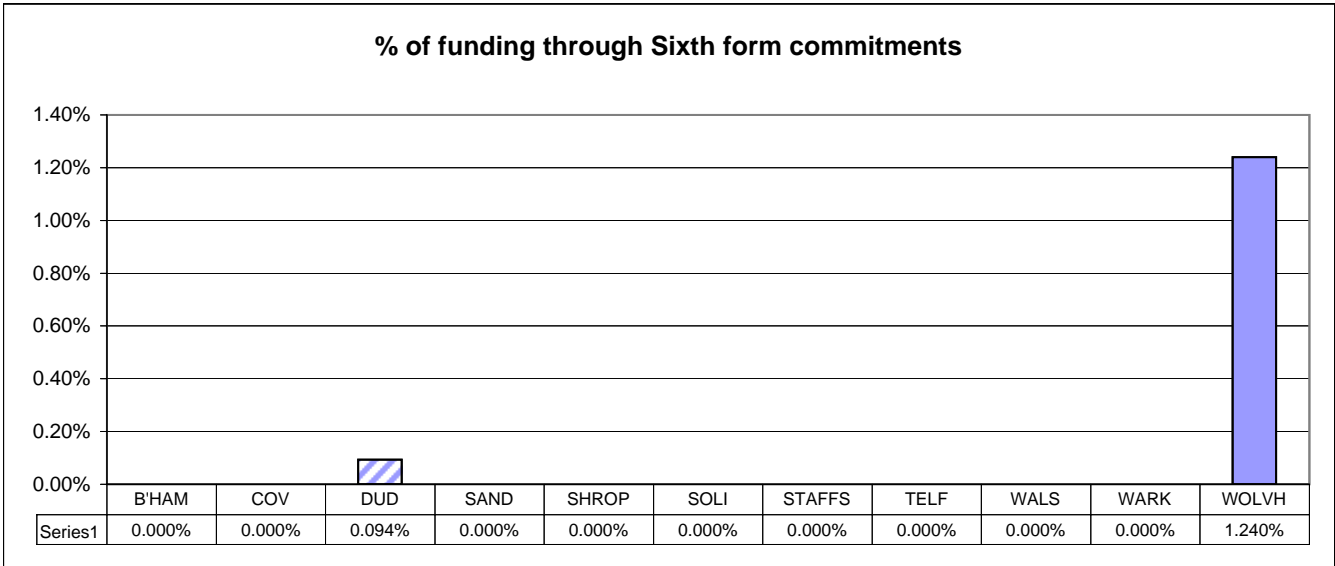
B'HAM = BIRMINGHAM	SAND = SANDWELL	STAFFS = STAFFORDSHIRE	WARK = WARWICKSHIRE
COV = COVENTRY	SHROP = SHROPSHIRE	TELF = TELFORD	WOLVH = WOLVERHAMPTON
DUD = DUDLEY	SOLI = SOLIHULL	WALS = WALSALL	



The graph identifies the % of funding targeted through EAL ranging from 0.259% to 1.719%
Only 7 authorities use this methodology.

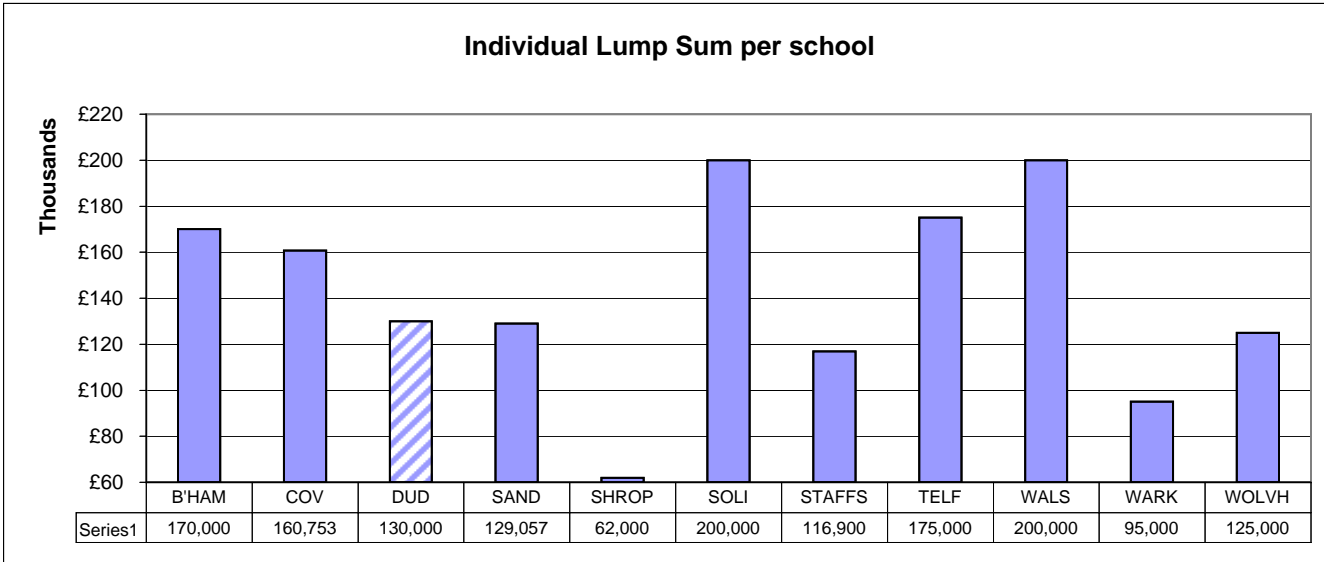


The graph identifies the % of funding targeted through EAL ranging from 0.169% to 0.622%
Only 2 authorities use this methodology.

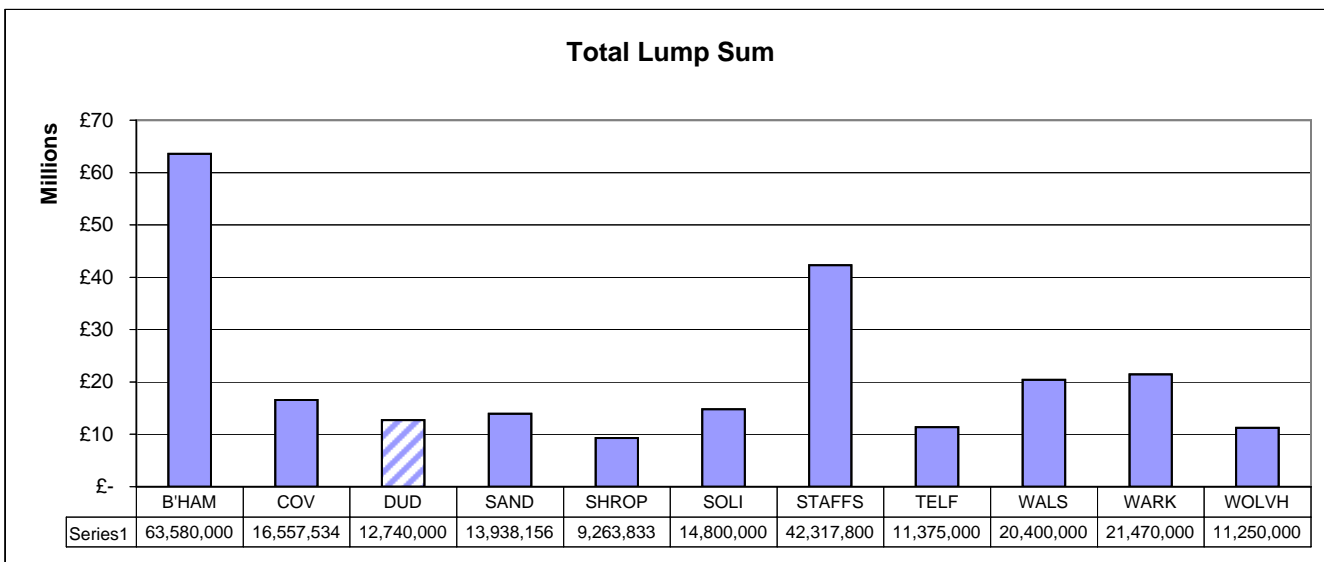


The graph identifies the % of funding targeted through Sixth form commitments ranging from 0.094% to 1.240%
Only 2 authorities use this methodology.

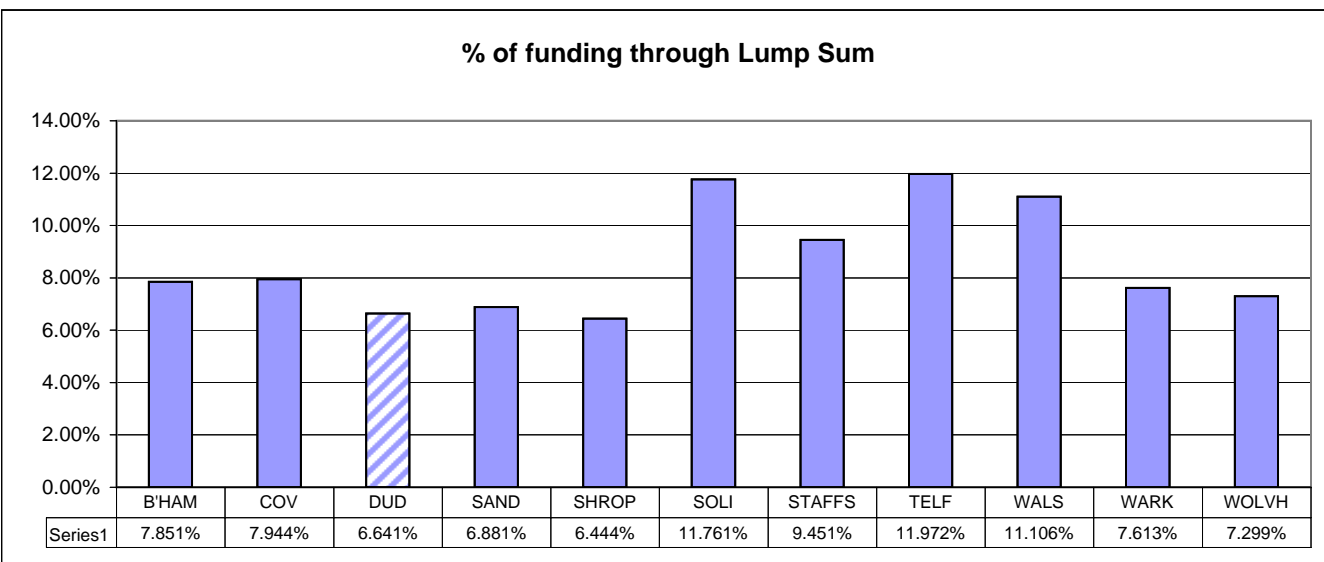
B'HAM = BIRMINGHAM	SAND = SANDWELL	STAFFS = STAFFORDSHIRE	WARK = WARWICKSHIRE
COV = COVENTRY	SHROP = SHROPSHIRE	TELF = TELFORD	WOLVH = WOLVERHAMPTON
DUD = DUDLEY	SOLI = SOLIHULL	WALS = WALSALL	



The graph identifies the individual lump sum per school ranging from £62,000 to £200,000

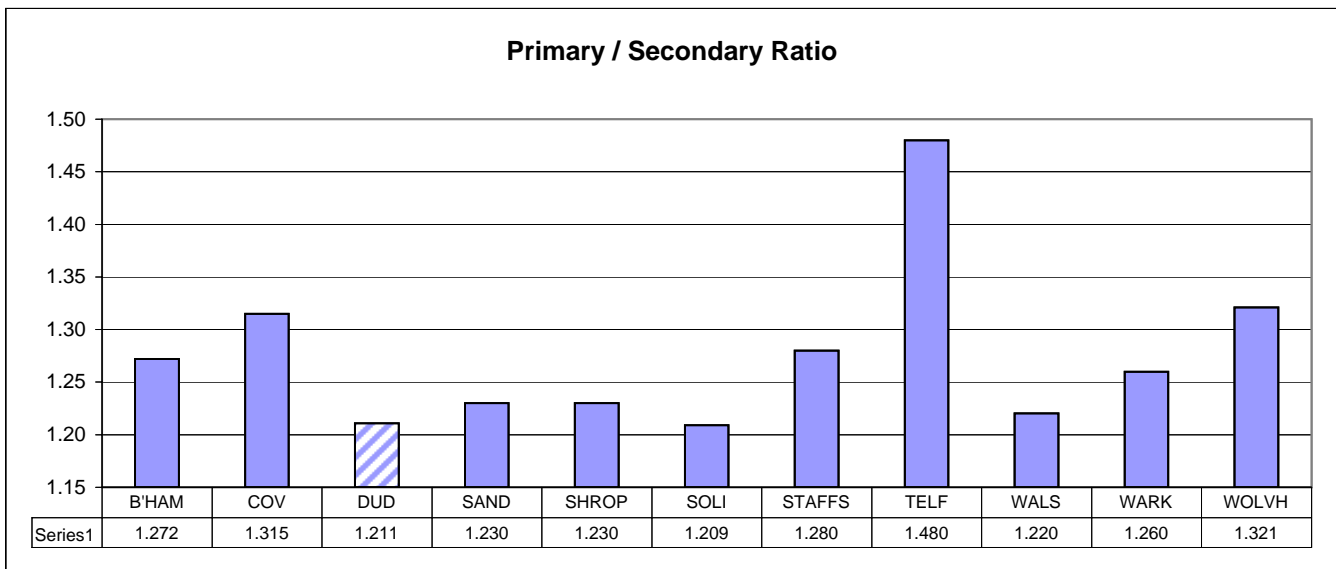


The graph identifies the total Lump sum of funding ranging from £9,263,833 to £63,580,000

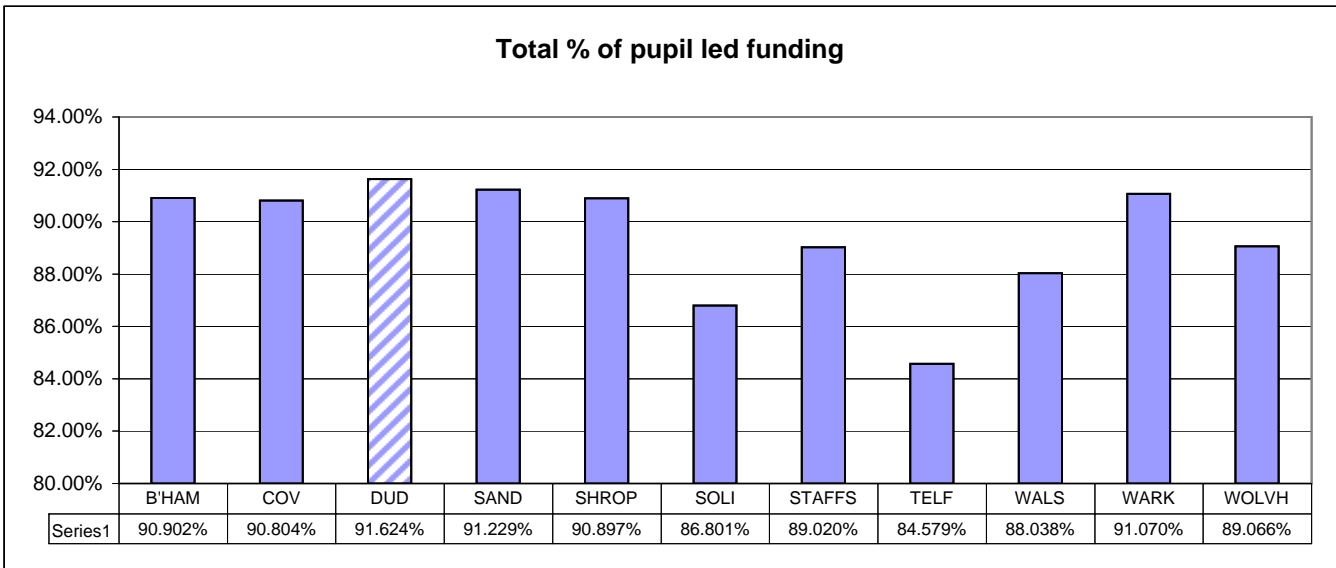


The graph identifies the total % of funding targeted through Lump sum ranging from 6.444% to 11.972%

B'HAM = BIRMINGHAM	SAND = SANDWELL	STAFFS = STAFFORDSHIRE	WARK = WARWICKSHIRE
COV = COVENTRY	SHROP = SHROPSHIRE	TELF = TELFORD	WOLVH = WOLVERHAMPTON
DUD = DUDLEY	SOLI = SOLIHULL	WALS = WALSALL	



The graph identifies the Primary / Secondary Ratio ranging from 1.209 to 1.480



The graph identifies the total % of pupil led funding ranging from 84.579% to 91.624%