

Brierley Hill Area Committee – 8th November 2012

Report of the Director of Children’s Services

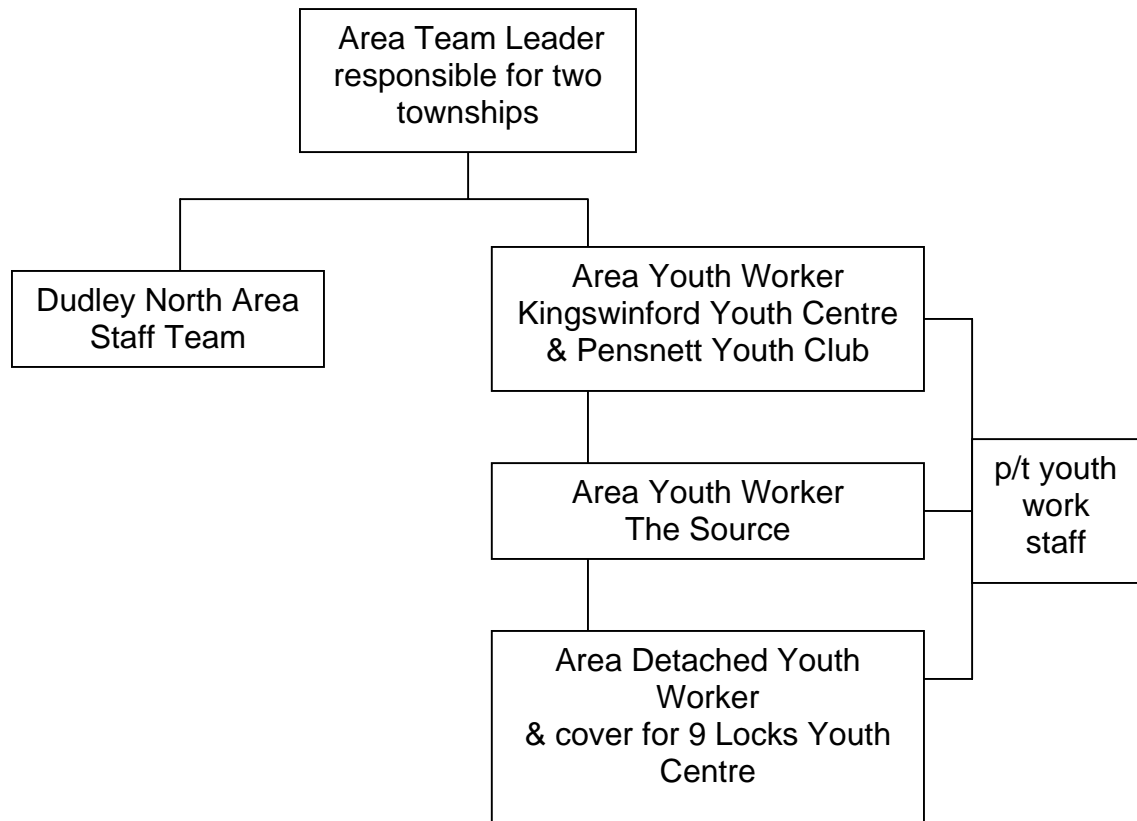
Youth Service Report

Purpose of Report

1. To update the Committee on the Youth Service provision for the Brierley Hill Area.

Background

2. Youth work delivery supports young people’s personal and social development. Through the provision of a range of interventions including targeted support, signposting, strong social support networks that develop and strengthen resilience and access to safe and supportive environments to challenge and be challenged, young people are able to raise aspirations and to contribute to decision making amongst peers and the wider community. “... involvement in activities of this nature is having a significant impact on the confidence and self esteem of young people” Dudley Inspection of Safeguarding and looked after children January 2012
3. Youth work is not bound by time limits and some young people will dip in and out influenced by immediate needs and interests. Others will maintain a long term relationship with the service often volunteering peer support and becoming senior members and part time staff.
4. During 2011/12 and 2012/13 the Youth Service reduced the budget through a combination of natural wastage, voluntary and compulsory redundancies and efficiency savings.
5. Support to targeted groups of young people remained constant and provision to vulnerable groups was prioritised. The following is the current youth service staff structure for the Brierley Hill Area;



6 During the same period a review of youth centres was undertaken. This considered condition, current usage and further capacity to support the local youth work sector. The service has a lettings rate that recognises the financial income of many small local groups who may only meet once or twice per week. The ability to generate income is often limited as is the need and capacity to lease, run and maintain a premise. The Service is well placed to manage the risk associated with centre based activity and has the following centres within the area;

- 9 Locks Youth Centre, Brierley Hill
- The Source, Wordsley
- Kingswinford Youth Centre

7. The current weekly youth service programme within the Brierley Hill Area is;

Day	Time	Centre/Project/Club
Monday	6.30-9.30pm 6.45-9.45pm 6.00-9.00pm	9 Locks Youth Centre Pensnett Youth Club Looked After Young People – Fantastic Fun Club @ K/ford YC
Tuesday	6.00-9.00pm 6.30-9.30pm	The Source Youth Centre Kingswinford Youth Centre
Wednesday	6.00-9.00pm 6.30-9.30pm	The Source Youth Centre 4Us disability youth club detached youth work - Hawbush
Thursday	3.00-4.30pm 6.30-9.30pm 6.45-9.45pm 6.30-9.30pm 6.30-9.30pm	PensMeadow After School Club 9 Locks Youth Centre Pensnett Youth Club Kingswinford Youth Centre Detached youth work - Wordsley
Friday	6.30-9.30pm 5.30-7.30pm	Detached youth work – Kingswinford & High Acres Dell football Project

8. A full time youth worker and some part time staff are trained to deliver workshops and run drop in sessions around sexual health and relationship education. The service and NHS Dudley co-manage the CCard system, a programme providing advice and condom distribution in none clinical settings. Through youth centres and alternative drop ins the service is the largest single agency operating the system. The service has also supported the introduction and development of the NHS Dudley Kickash programme. Grants are available to groups of young people to develop projects that educate others around the dangers of smoking. A number of successful projects have been completed by young people in youth centres and detached work within the area.
9. Detached youth work teams will identify and prioritise routes and neighbourhoods based on information received from West Midlands Police and Community Safety with regard to anti social behaviour.
10. Successful grant applications to Short breaks and the Arts Council has enabled the Source Youth Centre to provide a sensory room, purchase additional equipment as well as provide a greater holiday activity programme for the '4 Us' disability youth club. As numbers have grown both at the club and across the Youth Service's borough wide

disability provision, a need for a service specific medication policy has been identified and staff are currently working on a policy with support from nursing practitioners. An Ofsted 2012-13 survey inspection programme: youth work opportunities for young disabled people which took place in July, identified a number of features of good practice within the youth service.

11. During 2011 a mapping exercise was carried out in each of the areas in order to gain as full a picture as possible of the activities available to young people whether statutory, voluntary or private. The information will assist the local authority to determine sufficiency and consider strategies to address identified gaps.
12. To support the above and build local voluntary capacity to provide universal youth activities, a Small Capacity Grant was made available in quarter four of 2011/12. 28 local groups received a grant of between £500.00 and £1,000.00 in order to maintain and/or extend the activities that they offered during 2012/13. Of the 28 groups 10 are based within the Brierley Hill Area. The Directorate of Children's Services has continued to allocate funds known as the Youth Opportunity Fund. Administered through the Youth Service young people are able to access grants of up to £500.00 from a total fund of £40,000.00 divided equally between the five areas and borough wide projects.
13. As the Operating Authority for Dudley's Duke of Edinburgh Award, a more cost effective and efficient model of co-ordination was introduced in 2011 whilst still supporting the individual units in order to meet their responsibilities with regard to safety and assessment.

The following units meet within the Area;

- 2156 Squadron ATC
- Crestwood School
- Kingswinford School
- Kingswinford Youth Centre
- Merryhill
- 1st Pensnett Boys Brigade
- Summerhill
- Wordsley School

14. The Youth Service has a long established commitment to youth participation including co-ordinating and supporting the United Kingdom Youth Parliament project and Dudley Youth Council. The Brierley Hill Area Youth Forum feeds in to both as well as accessing other opportunities to develop democracy and campaigning skills. Young people within the Area contributed to the borough wide survey of young people aged 13 to 19 years (25 with a

disability) completed in 2011/12. The contributing stakeholders included West Midlands Police, Dudley Council for Voluntary Services, young people and NHS Dudley.

An accessible survey was provided in order to ensure greater response from disabled young people and a total of 1,694 were returned. The questions asked young people to comment on 'places to go and things to do', 'making a positive contribution', 'education, employment, training and transport', 'health services and education' and 'staying safe'. The results were analysed by Corporate Policy and Research and the findings disseminated to support strategic planning. It is proposed to repeat the survey in 2013/14. The survey results can be found at www.dudley.gov.uk/education-and-learning/youth-service.

15. As the Service moves forward the priority is to continue to develop 'teen' centres that act as a hub for a combination of targeted, open access, health and other support services for young people. Young people will continue to be actively involved in shaping the services delivered. In addition, the Service will continue to facilitate the capacity building of the voluntary youth sector in order that they are enabled to deliver the majority of universal provision.

Finance

16. The youth service offer within this area is achievable within the 12/13 youth service budget for Brierley Hill area of £359,220 and elements of the universal youth service budget that total £547,650 in 12/13.

Law

17. The Council can do anything incidental thereto, conducive thereto, or which facilitates the discharge of this function under section 111 of the Local Government Act 1972.
18. Under the Education and Inspections Act 2006, there is a statutory duty on local authorities to secure young people's access to sufficient educational and recreational leisure-time activities.

Equality Impact

19. Services are provided with regard to disadvantaged young people and all young people's needs. The work carried out promotes and ensures that young people are actively involved in shaping and improving services that are provide for them.

Recommendations

20. The Brierley Hill Area Committee notes the report.



.....
Jane Porter

Director of Children's Services

Contact Officer: Amanda Grove
Head of Youth Service
01384 818145
Amanda.grove@dudley.gov.uk