

Dudley MBC

APPENDIX 1

PRIMARY PUPIL PROJECTIONS (January 2007 Based Projections)

	CURRENT	PROJECTED								
	2006/07	2007/08	2008/09	2009/10	2010/11	2011/12	2011/12	2012/13	2013/14	2014/15
<i>Year R</i>	3,429	3,389	3,429	3,427	3,422	3,422	3,422	3,422	3,422	3,422
<i>Year 1</i>	3,479	3,429	3,392	3,441	3,435	3,430	3,458	3,458	3,458	3,458
<i>Year 2</i>	3,491	3,511	3,462	3,434	3,478	3,471	3,455	3,484	3,484	3,484
<i>Year 3</i>	3,591	3,515	3,535	3,496	3,460	3,507	3,511	3,495	3,524	3,524
<i>Year 4</i>	3,677	3,605	3,530	3,558	3,515	3,479	3,534	3,539	3,523	3,551
<i>Year 5</i>	3,790	3,686	3,615	3,550	3,573	3,529	3,497	3,551	3,557	3,541
<i>Year 6</i>	3,887	3,802	3,700	3,639	3,569	3,588	3,554	3,521	3,576	3,581
TOTAL	25,344	24,936	24,661	24,545	24,451	24,426	24,430	24,470	24,543	24,561
Current and Projected Surplus Places (based on existing Net Capacity of 28,790)	3,446	3,854	4,129	4,245	4,339	4,364	4,360	4,320	4,247	4,229
% Surplus Places	12.0%	13.4%	14.3%	14.7%	15.1%	15.2%	15.1%	15.0%	14.8%	14.7%

SECONDARY PUPIL PROJECTIONS (January 2007 Based Projections)

	ACTUAL	PROJECTED								
	2006/07	2007/08	2008/09	2009/10	2010/11	2011/12	2011/12	2012/13	2013/14	2014/15
<i>Year 7</i>	3,871	3,940	3,883	3,787	3,722	3,665	3,647	3,616	3,577	3,629
<i>Year 8</i>	3,960	3,871	3,944	3,899	3,800	3,728	3,672	3,654	3,623	3,583
<i>Year 9</i>	3,985	3,973	3,889	3,973	3,924	3,819	3,747	3,692	3,673	3,641
<i>Year 10</i>	4,169	3,969	3,962	3,889	3,978	3,914	3,810	3,739	3,684	3,664
<i>Year 11</i>	4,059	4,118	3,925	3,929	3,853	3,934	3,873	3,770	3,700	3,647
<i>Year 12</i>	237	232	236	225	232	230	224	226	221	214
<i>Year 13+</i>	227	215	208	212	204	208	216	211	213	208
TOTAL	20,508	20,318	20,048	19,915	19,714	19,499	19,188	18,906	18,690	18,587

Current & Projected Surplus Places (based on existing Net capacity of 21,305)	797	987	1,257	1,390	1,591	1,806	2,117	2,399	2,615	2,718
% Surplus Places	3.7%	4.6%	5.9%	6.5%	7.5%	8.5%	9.9%	11.3%	12.3%	12.8%

Dudley LEA Grand Total	45,852	45,254	44,709	44,460	44,164	43,924	43,619	43,376	43,233	43,148
-------------------------------	---------------	---------------	---------------	---------------	---------------	---------------	---------------	---------------	---------------	---------------

Planning Area 1 - Brierley Hill

PRIMARY PUPIL PROJECTIONS (January 2007 Based Projections)

	CURRENT	PROJECTED								
	2006/07	2007/08	2008/09	2009/10	2010/11	2011/12	2011/12	2012/13	2013/14	2014/15
<i>Year R</i>	689	653	664	670	670	670	670	670	670	670
<i>Year 1</i>	667	660	627	637	643	643	672	672	672	672
<i>Year 2</i>	702	685	679	645	656	662	651	679	679	679
<i>Year 3</i>	677	693	678	671	638	649	666	655	684	684
<i>Year 4</i>	712	673	690	675	668	636	653	671	660	688
<i>Year 5</i>	749	712	674	691	676	670	641	659	676	665
<i>Year 6</i>	752	749	714	676	693	678	675	647	665	682
TOTAL	4,948	4,825	4,725	4,666	4,644	4,607	4,629	4,653	4,706	4,741
Current and Projected Surplus Places (based on existing Net capacity of 5,882)	934	1,057	1,157	1,216	1,238	1,275	1,253	1,229	1,176	1,141
% Surplus Places	15.9%	18.0%	19.7%	20.7%	21.0%	21.7%	21.3%	20.9%	20.0%	19.4%

SECONDARY PUPIL PROJECTIONS (January 2007 Based Projections)

	ACTUAL	PROJECTED								
	2006/07	2007/08	2008/09	2009/10	2010/11	2011/12	2011/12	2012/13	2013/14	2014/15
<i>Year 7</i>	764	743	745	710	673	689	675	672	644	662
<i>Year 8</i>	779	765	749	752	716	679	696	681	679	650
<i>Year 9</i>	788	785	776	760	762	727	689	706	691	689
<i>Year 10</i>	797	783	785	776	770	762	727	690	706	691
<i>Year 11</i>	792	788	779	781	773	767	759	724	687	704
TOTAL	3,920	3,865	3,835	3,779	3,694	3,624	3,545	3,473	3,407	3,396
Current & Projected Surplus Places (based on existing Net capacity of 4,060)	140	195	225	281	366	436	515	587	653	664
% Surplus Places	3.4%	4.8%	5.5%	6.9%	9.0%	10.7%	12.7%	14.5%	16.1%	16.4%

Brierley Hill Grand Total	8,868	8,690	8,560	8,445	8,339	8,231	8,174	8,126	8,113	8,137
----------------------------------	--------------	--------------	--------------	--------------	--------------	--------------	--------------	--------------	--------------	--------------

Planning Area 2 - Dudley

PRIMARY PUPIL PROJECTIONS (January 2007 Based Projections)

	CURRENT	PROJECTED								
	2006/07	2007/08	2008/09	2009/10	2010/11	2011/12	2011/12	2012/13	2013/14	2014/15
<i>Year R</i>	816	847	870	829	824	824	824	824	824	824
<i>Year 1</i>	845	831	861	885	839	834	834	834	834	834
<i>Year 2</i>	760	856	841	872	890	844	839	839	839	839
<i>Year 3</i>	825	769	864	850	875	894	848	843	843	843
<i>Year 4</i>	824	833	778	872	853	879	897	851	846	846
<i>Year 5</i>	850	824	834	779	867	848	873	890	846	841
<i>Year 6</i>	912	859	834	843	784	871	857	882	899	855
TOTAL	5,832	5,819	5,882	5,930	5,932	5,993	5,972	5,964	5,933	5,883
Current and Projected Surplus Places (based on existing Net capacity of 6,699)	867	880	817	769	767	706	727	735	766	816
% Surplus Places	12.9%	13.1%	12.2%	11.5%	11.4%	10.5%	10.9%	11.0%	11.4%	12.2%

SECONDARY PUPIL PROJECTIONS (January 2007 Based Projections)

	ACTUAL	PROJECTED								
	2006/07	2007/08	2008/09	2009/10	2010/11	2011/12	2011/12	2012/13	2013/14	2014/15
<i>Year 7</i>	660	682	643	625	627	584	648	638	656	669
<i>Year 8</i>	643	664	686	648	625	622	579	642	632	650
<i>Year 9</i>	648	645	666	688	646	617	614	571	634	624
<i>Year 10</i>	648	650	647	668	685	638	610	606	564	626
<i>Year 11</i>	607	637	639	636	652	663	617	590	587	546
<i>Year 12</i>	69	86	87	86	89	91	85	81	81	75
<i>Year 13+</i>	62	59	74	74	74	76	78	73	70	69
TOTAL	3,337	3,424	3,442	3,424	3,398	3,291	3,230	3,202	3,224	3,260
Current & Projected Surplus Places (based on existing Net capacity of 3,380)	43	-44	-62	-44	-18	89	150	178	156	120
% Surplus Places	1.3%	-1.3%	-1.8%	-1.3%	-0.5%	2.6%	4.4%	5.3%	4.6%	3.5%

Dudley Grand Total	9,169	9,243	9,324	9,354	9,330	9,284	9,202	9,166	9,156	9,144
---------------------------	--------------	--------------	--------------	--------------	--------------	--------------	--------------	--------------	--------------	--------------

Planning Area 3 - Dudley North

PRIMARY PUPIL PROJECTIONS (January 2007 Based Projections)

	CURRENT	PROJECTED								
	2006/07	2007/08	2008/09	2009/10	2010/11	2011/12	2011/12	2012/13	2013/14	2014/15
Year R	576	563	579	576	576	576	576	576	576	576
Year 1	577	584	571	590	586	586	586	586	586	586
Year 2	616	574	581	571	590	586	586	586	586	586
Year 3	651	626	584	594	584	603	598	598	598	598
Year 4	643	659	633	593	603	593	613	608	608	608
Year 5	670	642	657	635	595	605	595	615	610	610
Year 6	642	676	647	666	644	603	614	603	623	618
TOTAL	4,375	4,324	4,253	4,225	4,178	4,153	4,168	4,172	4,187	4,182
Current and Projected Surplus Places (based on existing Net capacity of 4,717)	342	393	464	492	539	564	549	545	530	535
% Surplus Places	7.3%	8.3%	9.8%	10.4%	11.4%	12.0%	11.6%	11.6%	11.2%	11.3%

SECONDARY PUPIL PROJECTIONS (January 2007 Based Projections)

	ACTUAL	PROJECTED								
	2006/07	2007/08	2008/09	2009/10	2010/11	2011/12	2011/12	2012/13	2013/14	2014/15
Year 7	841	805	848	814	837	809	759	772	759	783
Year 8	835	841	805	850	816	839	811	761	774	761
Year 9	847	826	832	799	843	810	833	805	755	768
Year 10	878	845	825	833	799	843	810	833	805	756
Year 11	837	870	837	819	827	794	837	804	827	800
Year 12	30	34	35	34	33	33	32	33	32	33
Year 13+	33	26	28	30	29	28	38	37	38	37
TOTAL	4,301	4,247	4,210	4,177	4,184	4,156	4,120	4,045	3,991	3,937
Current & Projected Surplus Places (based on existing Net capacity of 4,313)	12	66	103	136	129	157	193	268	322	376
% Surplus Places	0.3%	1.5%	2.4%	3.2%	3.0%	3.6%	4.5%	6.2%	7.5%	8.7%

Dudley North Grand Total	8,676	8,570	8,463	8,402	8,362	8,309	8,287	8,217	8,178	8,120
---------------------------------	--------------	--------------	--------------	--------------	--------------	--------------	--------------	--------------	--------------	--------------

Planning Area 4 - Halesowen

PRIMARY PUPIL PROJECTIONS (January 2007 Based Projections)

	CURRENT	PROJECTED								
	2006/07	2007/08	2008/09	2009/10	2010/11	2011/12	2011/12	2012/13	2013/14	2014/15
<i>Year R</i>	683	639	667	658	658	658	658	658	658	658
<i>Year 1</i>	687	682	638	665	656	656	656	656	656	656
<i>Year 2</i>	679	695	690	645	671	662	662	662	662	662
<i>Year 3</i>	718	689	705	699	654	680	671	671	671	671
<i>Year 4</i>	749	715	687	701	695	650	677	668	668	668
<i>Year 5</i>	741	757	722	693	708	701	656	683	674	674
<i>Year 6</i>	820	742	758	722	693	707	701	656	683	674
TOTAL	5,077	4,919	4,866	4,782	4,734	4,715	4,681	4,654	4,672	4,663
Current and Projected Surplus Places (based on existing Net capacity of 5,929)	852	1,010	1,063	1,147	1,195	1,214	1,248	1,275	1,257	1,266
% Surplus Places	14.4%	17.0%	17.9%	19.3%	20.2%	20.5%	21.0%	21.5%	21.2%	21.4%

SECONDARY PUPIL PROJECTIONS (January 2007 Based Projections)

	ACTUAL	PROJECTED								
	2006/07	2007/08	2008/09	2009/10	2010/11	2011/12	2011/12	2012/13	2013/14	2014/15
<i>Year 7</i>	749	843	763	778	742	711	727	720	674	701
<i>Year 8</i>	815	748	842	761	776	740	710	725	719	672
<i>Year 9</i>	811	812	746	838	757	772	737	707	721	715
<i>Year 10</i>	885	807	808	741	832	753	768	732	702	717
<i>Year 11</i>	897	872	795	795	729	819	741	756	721	691
TOTAL	4,157	4,082	3,954	3,913	3,837	3,796	3,682	3,639	3,537	3,497
Current & Projected Surplus Places (based on existing Net capacity of 4,440)	283	358	486	527	603	644	758	801	903	943
% Surplus Places	6.4%	8.1%	11.0%	11.9%	13.6%	14.5%	17.1%	18.0%	20.3%	21.2%

Halesowen Grand Total	9,234	9,001	8,820	8,696	8,571	8,511	8,363	8,293	8,208	8,160
------------------------------	--------------	--------------	--------------	--------------	--------------	--------------	--------------	--------------	--------------	--------------

Planning Area 5 - Stourbridge

PRIMARY PUPIL PROJECTIONS (January 2007 Based Projections)

	CURRENT	PROJECTED								
	2006/07	2007/08	2008/09	2009/10	2010/11	2011/12	2011/12	2012/13	2013/14	2014/15
Year R	665	686	649	694	694	694	694	694	694	694
Year 1	703	673	694	665	710	710	710	710	710	710
Year 2	734	701	671	701	671	717	717	717	717	717
Year 3	720	737	704	682	709	682	728	728	728	728
Year 4	749	725	742	717	695	721	694	741	741	741
Year 5	780	751	727	752	727	705	731	704	751	750
Year 6	761	776	747	731	756	729	706	733	706	752
TOTAL	5,112	5,050	4,935	4,942	4,962	4,958	4,981	5,027	5,046	5,092
Current and Projected Surplus Places (based on existing Net capacity of 5,563)	451	513	628	621	601	605	582	536	517	471
% Surplus Places	8.1%	9.2%	11.3%	11.2%	10.8%	10.9%	10.5%	9.6%	9.3%	8.5%

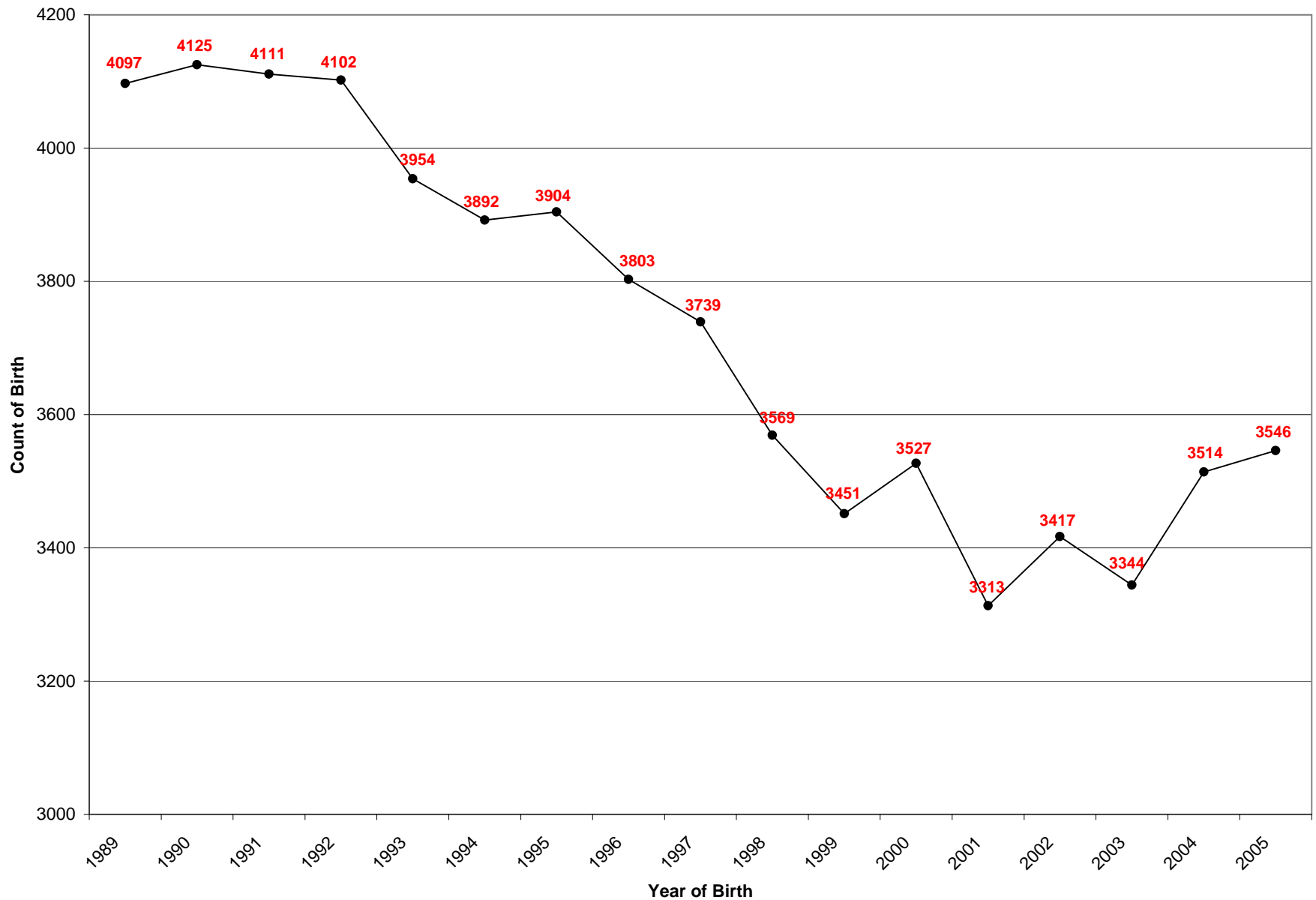
SECONDARY PUPIL PROJECTIONS (January 2007 Based Projections)

	ACTUAL	PROJECTED								
	2006/07	2007/08	2008/09	2009/10	2010/11	2011/12	2011/12	2012/13	2013/14	2014/15
Year 7	857	866	884	861	842	871	839	814	844	813
Year 8	888	852	861	889	866	848	876	844	819	849
Year 9	891	905	869	888	916	893	874	903	871	845
Year 10	961	884	898	872	891	919	896	877	906	874
Year 11	926	950	874	898	872	891	919	896	878	906
Year 12	138	112	115	106	111	105	108	111	108	106
Year 13+	132	130	106	108	102	104	100	102	105	102
TOTAL	4,793	4,700	4,607	4,622	4,600	4,631	4,611	4,547	4,531	4,496
Current & Projected Surplus Places (based on existing Net capacity of 5,112)	319	412	505	490	512	481	501	565	581	616
% Surplus Places	6.2%	8.1%	9.9%	9.6%	10.0%	9.4%	9.8%	11.0%	11.4%	12.0%

Stourbridge Grand Total	9,905	9,750	9,541	9,564	9,562	9,589	9,592	9,574	9,577	9,589
--------------------------------	--------------	--------------	--------------	--------------	--------------	--------------	--------------	--------------	--------------	--------------

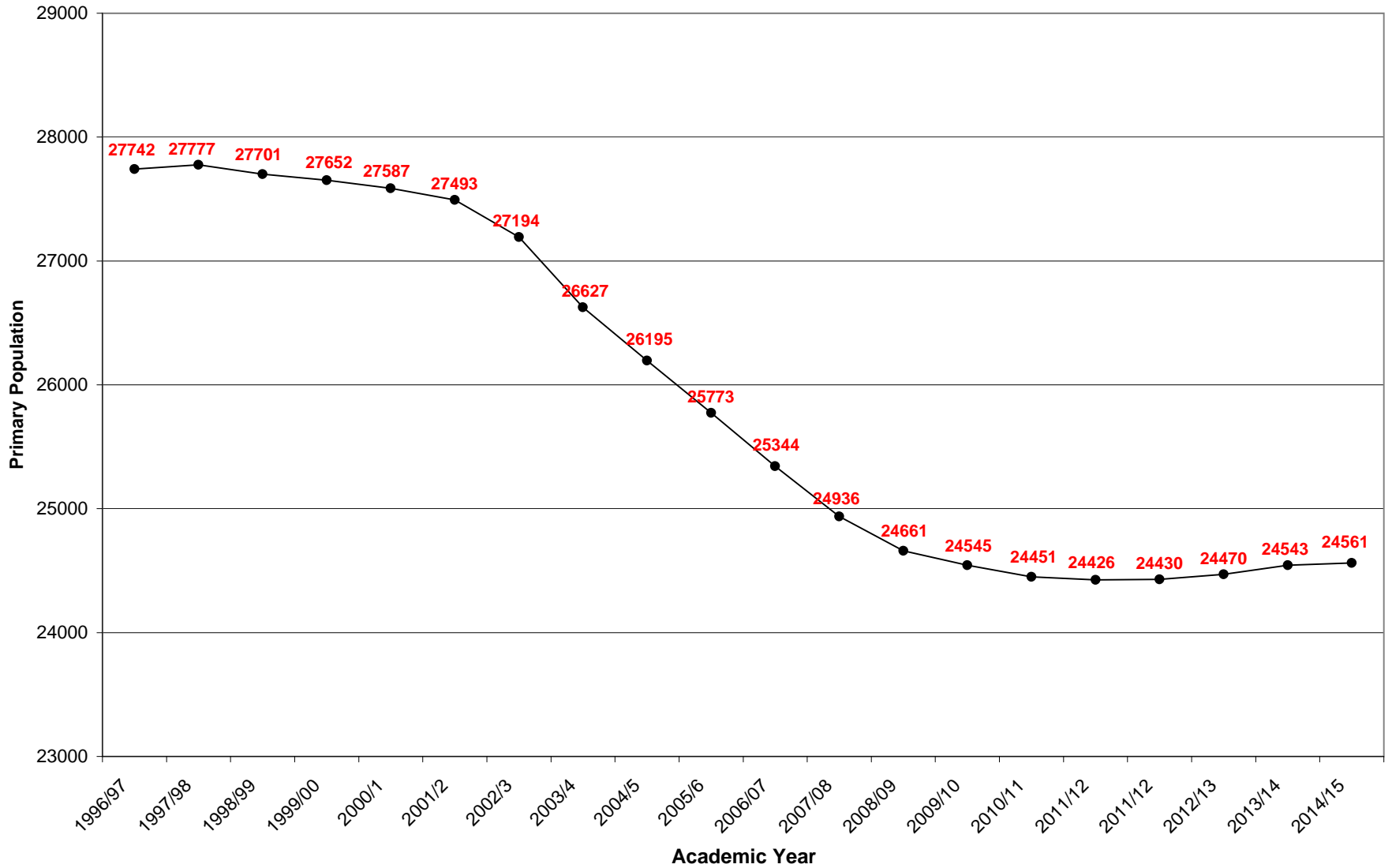
Year	Number of Live Births
1989	4097
1990	4125
1991	4111
1992	4102
1993	3954
1994	3892
1995	3904
1996	3803
1997	3739
1998	3569
1999	3451
2000	3527
2001	3313
2002	3417
2003	3344
2004	3514
2005	3546
2006	Data not available until May 07

Dudley Metropolitan Borough: Calendar Live Births 1989 to 2005



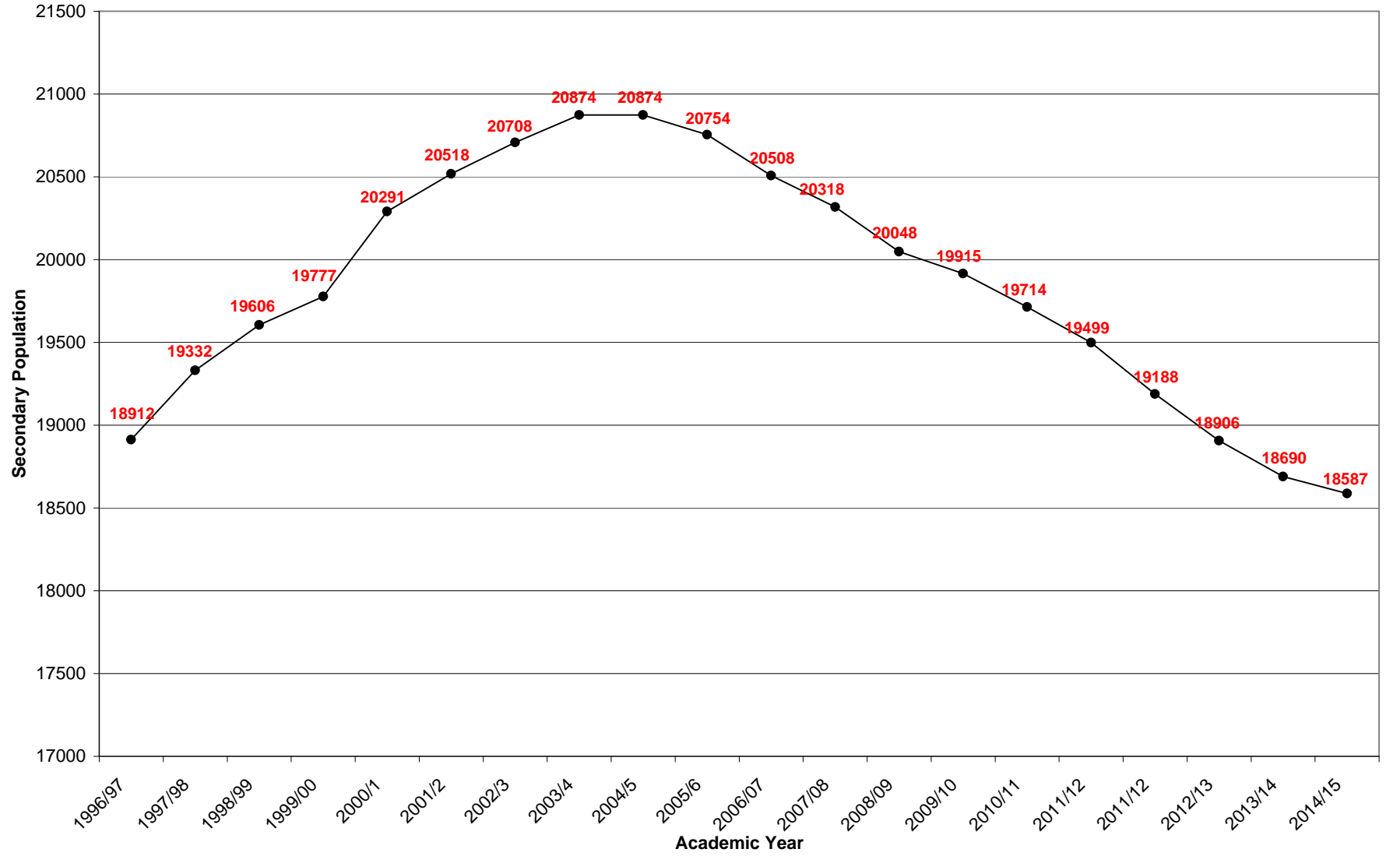
Academic Year	Primary Population
1996/97	27742
1997/98	27777
1998/99	27701
1999/00	27652
2000/01	27587
2001/02	27493
2002/03	27194
2003/04	26627
2004/05	26195
2005/06	25773
2006/07	25344
2007/08	24936
2008/09	24661
2009/10	24545
2010/11	24451
2011/12	24426
2011/12	24430
2012/13	24470
2013/14	24543
2014/15	24561

Dudley Primary School Population : Reception - Year 6 (1996/7 to Projected 2014/15)



Academic Year	Secondary Population
1996/97	18912
1997/98	19332
1998/99	19606
1999/00	19777
2000/1	20291
2001/2	20518
2002/3	20708
2003/4	20874
2004/5	20874
2005/6	20754
2006/07	20508
2007/08	20318
2008/09	20048
2009/10	19915
2010/11	19714
2011/12	19499
2011/12	19188
2012/13	18906
2013/14	18690
2014/15	18587

Dudley Secondary School Population : Year 7 to 6th Form (1996/7 to Projected 2014/15)



Current Year Group	Birth Year	Live Births in that year
Yr 11	1990/1	4116
Yr 10	1991/2	4105
Yr 9	1992/3	4052
Yr 8	1993/4	3889
Yr 7	1994/5	3851
Yr 6	1995/6	3882
Yr 5	1996/7	3708
Yr 4	1997/8	3621
Yr 3	1998/9	3514
Yr 2	1999/00	3534
Yr 1	2000/1	3364
Yr R	2001/2	3382
-	2002/3	3368
-	2003/4	3457
-	2004/5	3535

Dudley Metropolitan Borough: Current Year Group and the count of births in that year (1990/91 to 2004/5)

