

**Directorate of Children's Services**

# **Consultation on the Youth Service**

***'Putting children and young people first in Dudley'***

***October 2008***

**John Freeman**

**Director of Children's Services**

Dudley Metropolitan Borough Council

Directorate of Children's Services

Westox House

1 Trinity Road

Dudley

West Midlands DY1 1JQ



**2004-2005**

*Transforming the School Workforce*

**Directorate of Children's Services**

**Consultation Document**

**Consultation on:** The Youth Service

**Summary:** A Consultation on future Youth Service provision.

**Deadline:** All responses must be received **6 January 2009**

**Consultees:** Black Country Chamber of Commerce  
Black Country Connexions  
Black Country Learning and Skills Council  
Centre for Equality & Diversity  
Chairs of Governors  
Children's Centres  
Children's Trust Executive Board  
Community Centres  
Community Forums / Groups  
Councillors  
Directorate Staff  
DOSTI  
Dudley Association of Governing Bodies  
Dudley Borough Churches Forum  
Dudley Children's Fund NCH  
Dudley Community Partnership  
Dudley Council Directorates – Corporate Board  
Dudley Council for Voluntary Services  
Dudley Group of Hospitals  
Dudley Muslim Association  
Dudley Parent Partnership  
Dudley Primary Care Trust  
Dudley Safeguarding Children's Board  
Education Business Partnership  
Further Education Colleges  
Headteachers  
Kashmiri Pakistani Professionals Forum  
Libraries  
Local Admissions Forum  
Members of Parliament  
Neighbouring Local Authorities Directors of Children's Services

Roman Catholic Diocesan Schools Commission  
Select Committee for Children's Services  
Standing Advisory Council on Religious Education  
Unions and Professional Associations  
West Midlands Children's Education Services for Travelling  
Children (WMCESTC)  
West Midlands Police  
Worcester Diocesan Board of Education  
Me2 Panel  
Dudley Youth Council  
UKYP

**Public Access**

Consultations, plans and policies will be published as follows:

Public Libraries  
Dudley MBC website [www.dudley.gov.uk](http://www.dudley.gov.uk)  
Westox House

**Responses to:**

Laura Ferrington – Executive Support Team Manager  
Executive Support Team  
Directorate of Children's Services  
Westox House  
1 Trinity Road  
Dudley DY1 1JQ  
[Laura.ferrington@dudley.gov.uk](mailto:Laura.ferrington@dudley.gov.uk)

*Your responses will be co-ordinated by the above person.  
Any responses will be provided by the appropriate responsible  
officer for this consultation.*

All responses may be published. A **large print version**, and translation into other languages is available on request to the above address.



John Freeman  
Director of Children's Services

## **Dudley Youth Service - Meeting National & Local Needs**

In order to meet both national and local changes that have been emerging since the publication of the green paper 'Every Child Matters' in September 2003, the Directorate of Children's Services has implemented a restructure of the Local Authority's Youth Service. The reformed service will be known as Dudley Youth Service and its organisation and practice will be based on current national guidance.

Following this consultation the Youth Service will develop its operational plan. The service will work with other partners to ensure cohesion between the Council's key planning documents and its own service plan.

The national guidance has developed since 2005 when the Government published the Green Paper 'Youth Matters' and followed this in March 2006 with 'Next Steps' as a response to the consultation feedback received. The key themes of these developments have been incorporated into 'Aiming High for Young People – a 10 Year Strategy'. These two papers have been the most significant policy initiative for youth services for some considerable time. The principles contained in these documents has been used to develop the new structure of the service

Aim Higher for Young People details how partners will work together to ensure that all children and young people, particularly the disadvantaged, are provided with high quality services. This consultation has been based on the above guidance.

Under the umbrella of Integrated Youth Support, the government identifies the following four key elements for inclusion within delivery to young people;

- targeted youth support;
- community and volunteering;
- information, advice and guidance;
- promotion of positive activities.

Future youth provision needs to be tailored to demand.

Demand is defined by listening to the views of young people about service process. Also the 'Youth Matters' and 'Next Steps' demands an early response to identified risks in order support young people's transition through key life stages and choices.

As a result of restructuring, the Dudley Youth Service will be in a position to respond to the needs of the five key groups of young people agreed by the Dudley Children's Trust and identified within Dudley's Targeted Youth Support Action Plan (see page 8 for identified groups). It will also provide Universal Services. All the provision will be developed to ensure it is accessible, of quality and takes regard of young people's views.

## **Supporting Young People in Dudley**

The aim of the Dudley Youth Service will be to build relationships with young people aged 13 to 19 (up to 25 for young people with a disability) in order to develop their personal and social skills. The service provided will be delivered within the budget provided by the Council and will aim to meet the national targets set by the Department for Children Schools and Families.

One of the aims of the Youth Service is to meet government targets which are;

1. the service should aim to reach at least 25% of all Dudley's 13 - 19 young people;
2. to encourage 15% of the above group to participate on a regular basis;
3. of the young people identified in 2 above, 30% will be supported to achieve accredited educational outcomes and 60% or more will be supported to achieve learning outcomes.

Dudley Youth Service will be as accessible as possible to as many young people in this age group, but acknowledge that it does not work with all young people all of the time. The service recognise that the needs of, and the reasons why, young people engage will frequently change. An individual young person could regularly move between the spheres of wanting open access and needing targeted work.

Dudley Youth Service acknowledges that young people on their thirteenth birthday do not just suddenly engage with adults in out of school activities. Many will have already been participating in a range of activities. The Borough is developing services to support young people pre thirteen. The Dudley Play Strategy and the Extended Schools Programmes offer activities which provide opportunities for younger children at the end school day and during the week. Dudley Youth Service will develop transitional links with these services.

Working with a number of partners the service aims to provide support to vulnerable groups as determined by local need.

Dudley Youth Service will develop Information Advice and Guidance to support young people through their transitional period.

## What will the Dudley Youth Service offer be

### **Universal Offer**

Dudley Youth Service will offer provision via two clearly identified key areas of work – Universal and Targeted.

Universal Youth Work will be delivered through a township model. This structure will focus delivery on identified national and local needs. Young people's involvement in decision making will be encouraged and supported. The base budget has been allocated to ensure funding is available proportionate to need with Dudley Central and Brierley Hill receiving an enhanced number of sessions.

A Service development plan will ensure that there is consistency within townships and across the borough. Each township will publish a youth offer and an area plan. The plan will incorporate any additional, locally specific activity as determined by local needs and young people views.

Universal provision will be delivered via youth centres, detached work, part time youth clubs, joint working with partners and work in schools. Universal Services will support the work of the Targeted Team and will also continue to work in partnership with other agencies to continuously develop provision for young people aged 13 to 19 years.

There will be a commitment to seek out and respond to young peoples views, ensuring that there is youth participation at both an operational level, as well as strategically. **See Appendix A.**

### **Targeted Offer**

Dudley's Targeted Youth Support aims to ensure that the needs of vulnerable teenagers are identified early and met by agencies working together effectively – in ways that are shaped by the views and experiences of young people themselves.

There are seven key elements of targeted support:

- strengthening the influence of vulnerable young people, and their families and communities, and their ability to bring about positive change;
- identifying vulnerable young people early, in the context of their everyday lives;

- building a clear picture of individual needs, shared by young people and the agencies working with them, using the Common Assessment Framework (CAF);
- enabling vulnerable young people to receive early support in universal settings. Help all agencies to draw in extra help on behalf of young people, through better links with other agencies and organisations;
- ensuring vulnerable young people receive a personalised package of support, information, advice and guidance, and learning and development opportunities, with support for their parents or carers as appropriate. This should be co-ordinated by a trusted lead professional and delivered by agencies working well together;
- providing support for vulnerable young people across transitions, for example moving on from school or from the support of one service to another as needs change;
- making services more accessible, attractive and relevant for vulnerable young people.

The Youth Service is fully committed to the support of the Borough's Targeted Youth Support Plan.

The targeted groups for 2008/2010 are:-

- looked after young people;
- young people with disability;
- young people not in employment education or training;
- teenage parents;
- assisting young people in avoiding the judicial system i.e. at risk of offending and or re-offending.

Transition arrangements between and across agencies is a theme that has been identified as a priority development across the five priority groups.

- similarly work with other young people displaying at risk characteristics can not be ignored. Support for substance misuse will be a common thread running



through the work.

Other groups may be determined through the 13 -19 Youth Partnership Board as work develops.

## **Structure Chart**

*The new Youth Service structure chart can be seen in Appendix B.*

## **Universal Offer – Proposed Offer**

Due to historic distribution of Dudley Youth Service buildings the combination of activity will vary. Each township will offer the following standard opening times and the provision of a range of Positive Activities which may be delivered in partnership with other youth organisations.

### **Opening Times**

- hubs (full time designated centres) will offer at least 4 youth work sessions per week at times additional to standard school hours and only reduce to 3 sessions per week on a temporary basis as a result of staff cover difficulties;
- part time youth centres will maintain the existing offer of 3 youth work sessions per week and not reduce to fewer than 2 youth work sessions per week if faced with staff cover difficulties;
- detached youth work projects will deliver a minimum of 3 evenings per week;
- a youth work sessions will be 3 hours direct work with young people, an evening sessions will be between the hours of 6.00pm and 10.00pm;
- a detached evening session may run between 5.00pm and 10.00pm to allow for issues of lighting and weather and will run for 3 hour subject to severe weather conditions. However, staff will plan specific projects during winter months which enable work to continue indoors if necessary.

### **Weekend youth work**

Sessions will be those delivered between 6.00pm (5.00pm for detached sessions), Friday and 10.00pm Sunday. There will be a minimum of 2 weekend sessions per week per area. This work will be standardised across the Borough early in 2009 following the consultation with staff.

### **Holiday provision**

This is provided during the standard school closure periods within an academic year and can be across 7 days per week.

- each township will offer a minimum of 4 weeks with a programme of at least 4 days per week during the summer holidays;

- a further 10 days per township will be provided across the remaining holiday periods;
- all holiday provision will include opportunity for young people to gain recorded learning outcomes and accreditation.

### **Who is Universal Provision aimed at?**

Youth work provision is for young people aged 13 to 19 years (up to 25 years with a learning disability). Those young people below this age range but already registered with the Service, will continue to access provision, however, from September 2008 we will not recruit from below school year 8.

Within the areas there will also be a minimum of 1 session per week for young people with learning disabilities and 1 session per week for young women.

### **Cost to young people of Dudley Youth Service activity**

There will be a standardised cost to young people for access to regular universal youth work sessions. The Dudley Youth Service will introduce a membership scheme with subsequent subscriptions of 50p per session from 2008/2009. This will be reviewed on an annual basis. This does not apply to young people contacted through detached youth work where subscriptions are not collected for sessions unless specific workshops and/or projects.

The cost of additional activities to young people will be determined at a township and unit level to enable local needs based decision making.

### **Universal Curriculum**

Each township will offer the following opportunities to young people. These have been identified from a recent young persons' survey.

- sports;
- arts and crafts;
- offsite visits;
- outdoor activities;

- access to ICT;
- dance/drama/music;
- residential experiences at least 1 per unit per year.

In addition there will also be the following prioritised curriculum offer with minimum annual targets of:

- **Sexual Health Relationships Education:** 12 workshops per area per year, an area drop-in facility and on going condom distribution within youth work settings.
- **Substance misuse:** 1 workshop per unit per year.
- **Healthy Lifestyles:** 12 workshops per area per year.
- **Personal Safety:** 1 workshop per unit per year.

Information Advice and Guidance will be provided through partnership working with Black Country Connexions and the 14-19 Education Team.

### **Volunteering**

Dudley Youth Service has consistently provided young people with opportunities to volunteer their time in informal and more structured formats. This will continue to be offered but recognition of time and achievements will now be provided.

### **Work with Schools**

Dudley Youth Service, through the Universal team, can support the educational achievements of pupils through the provision of alternative educational programmes. This will be done in partnership with Secondary Schools, Pupil Referral Units and Colleges.

A 'menu' will be developed with schools, Connexions and the 14-19 Education Team with a view to developing term time programmes. The work will be with groups of young people rather than 1 to 1 support. Dudley Youth Service will take the lead on the service delivery, with the support of school staff. Financial support from the schools will be sought where programmes require registration and requisition of specific resources.

The menu will include:

- Princes Trust XL;
- years 9 -11 alternative curriculum provision with a recognised qualification over 10 weeks;
- award scheme development and accreditation network short course award groups (30 hours);
- social inclusion groups developing personal and social skills with a built in accreditation option;
- 3 hour Personal, Social, Health Education/curriculum workshop contributions to enrichment days;
- junior sports leader award;
- contribution to enterprise days;
- work experience placements with an Award Scheme Development and Accreditation Network Short Course Short Course award.
- Castle Award.

The final menu will be confirmed following agreement with relevant partners.

### **Involving Young People**

Township Area Team Leaders will take responsibility for ensuring that young people are actively involved in decision making within Universal Services.

The Team Leader will support the Area Youth Forum to develop a plan. They will also attend Area Committee to provide update reports on service delivery.

Each township will establish and maintain an Area Youth Forum which meets at least ten times per year. The forum will nominate two representatives to attend Dudley Youth Council.

Each Youth Centre, club and/or project will establish a mechanism for young people to inform decision making within their project and ensure links to the area youth forum.

Councillors will have the opportunity to attend area youth forums biannually to discuss and feedback on the forums' area action plan. The Youth Forum action plan will be developed each September following consultation across each area.

An 'annual sitting' of Youth Forum's will be held to enable forum's and other decision making bodies, to come together and share good practice, celebrate their successes and identify core issues for the coming year.

### **Consultation Questions on the Universal Offer**

This proposed Universal offer, outlined in Pages 11 to 15, has been identified against need and can be delivered within the budget available.

The Directorate of Children's Services seeks your comment on that offer.

- 1. The Council would like your views as to the suitability and range of activities outlined within Dudley Youth Service's Universal Offer.**
- 2. If you are responding on behalf of an organisation, please state if you are willing to discuss closer working arrangements in order to enhance the universal offer, name of organisation, areas of support which may be possible and contact details.**

## **Targeted Offer**

The five priority groups (see page 8) for Targeted Youth Support have been determined by the 13 -19 Partnership Board of the Dudley Children's Trust. The role of Dudley Youth Service is to work in collaboration with other agencies enhancing existing services and developing new initiatives for these vulnerable young people.

Though there are common factors between the priority groups of young people, there will be five separate offers. In addition to their exclusive delivery staff within the Targeted Team will also support their colleagues in the Universal Team as appropriate. Specific support is identified in the individual offers below:

Following the consultation on the offers outlined below, staff supporting each targeted offer will have their delivery programmes determined and published.

## **Looked After Children Offer**

The Dudley Youth Service offer to Looked After Children (13-19) will be:

- to establish a one session a week provision for Looked After Children in the 13-19 age range;
- to establish an activity newsletter giving information on services for this group;
- to support individual Looked After Children (13-19) that wishes to access and participate in any aspect of the Youth Service;
- to maintain working links with local authority children's homes and the 16+ drop-in session;
- to support all Looked After Children (13-19) to be fully involved in the inclusive decision making processes that shape Dudley Youth Service and the national youth work agenda;
- to support Dudley's Carers in the identification and acquisition of funding sources that will increase opportunities for Looked After Children (13-19);
- to signpost Dudley Carers to encourage them to participate in all youth worker training that is delivered by the Service as appropriate;



- to develop an awareness training package regarding the specific needs and challenges facing Looked After Children (13-19) and make it available for all staff;
- to work in collaboration with the Duke of Edinburgh's award officer establish opportunities for Looked After Children (13-19) to engage, exclusively and inclusively, with both this scheme and the Castle Award.

### **Young People with Disabilities Offer**

Dudley Youth Service offer to Young People with Disabilities will be:

- to support the five Universal Township teams in the development and delivery of their offers to young people with disabilities;
- to contribute to the Borough's short breaks agenda and ensure that the Youth Service participates in strategic meetings;
- to attend the meetings of Kids Orchard and ME2 and other such organisations and provide them with updates of Dudley Youth Service developments and exploring and developing joint initiatives;
- to ensure all Dudley Youth Service settings are compliant with all aspects of Disabilities Discrimination Act;
- to work in partnership with Extended Schools pilot project for young people with disabilities in the Halesowen / Cradley area;
- to seconde, as a minimum, the equivalent of 2 staff sessions a week to support the development of Me2's panels and/or the appropriate groups working in this area;
- to support Universal projects in their attempt to achieve Me2 status;
- to facilitate multi agency meetings of the Out of School provision for autistic young people steering group;
- to deliver and develop the weekly You and Me provision for autistic young people at Lower Gornal and support the emerging parents group;
- to deliver and develop the weekly provision for Deaf Young People at Claughton

and support the emerging parents group;

- to support the “Rockies” disabilities project at Russells Hall in the re launch of their provision;
- to collaborate with the Duke of Edinburgh’s award officer establish opportunities for young people with disabilities to engage, exclusively and inclusively, with both this scheme and the Castle Award;
- to assist partners in the delivery of autism awareness training to adults working with young people;
- to develop and produce disability awareness Curriculum modules for young people and support Universal staff in their delivery.

**N. E. E. T. - (Young People Not in Employment Education and Training), or at risk of not engaging.**

NEETS are young people aged 16 – 18 who have completed statutory education but are not in education, employment or training. Young people pre 16 can not be described as NEET. In order to achieve the NEET targets, early identification of young people who are at risk of becoming NEET is crucial. Young People who are at risk of becoming NEET should be identified as early as possible by working in partnership with the School(s), Connexions, and other partners.

In the structure of Dudley Youth Service there are no dedicated staff identified for this group. The service will concentrate on supporting through the Universal Services those young people who are at risk in this area.

Currently across the borough there has been an in-balance of support offered to individual schools. This will be addressed in the form of a menu of activities and will be offered on an annual rolling programme basis to all schools (see universal offer).

**Teenage Parents and Sexual Health (Respect Yourself Campaign) Offer**

All work in this area is carried out in partnership with the Respect Yourself Campaign team and one member of Dudley Youth Service Targeted Team.

The offer will be:

- to deliver 2 active drop-in sessions per week. These are currently at Woodside

and Wrens Nest Children Centre. The young women attending will receive a varied, needs lead programme that will include family learning, literacy, basic skills, healthy eating, sexual health, self esteem, domestic violence, finances and opportunities to achieve accrediting learning;

- to actively contribute to the borough wide, multi-agency 'Respect Yourself Campaign' plan;
- to regularly follow up and maintain contact with teenage mothers that don't attend sessions;
- to provide a minimum of 4 borough wide events aimed at raising young people's awareness of the importance of sexual health. There will also be up to two twelve week accredited courses in peer education for young people;
- to work in partnership with the Respect Yourself Campaign team, to support the following: a minimum of 16 condom distribution points for young people across the borough and will, when requested, assist with Advice, Information and Guidance to the universal staff that are involved in and developing condom distribution, Chlamydia testing and sexual health projects within universal settings;
- to be actively involved in the delivery of multi-agency staff training to staff and young people, in both voluntary and statutory situations;
- to refer all future young mothers to a midwife and make them aware of the services available to them;
- to organise an annual reunion event.

### **Avoiding the Judicial System Offer**

In collaboration with Youth Offending Services Dudley Youth Service will engage with groups of young people who have been identified as being most at risk of offending or re-offending.

Support universal staff in developing and delivering strategies to encourage positive participation.

## **Other Groups**

As well as the five targeted areas of activity the service will work in partnership with other agencies to support other identified groups as need determines. Currently the service is working with several Black Minority Ethnic groups and Gypsy Romany Travellers.

### **Consultation Questions on the Targeted Offer**

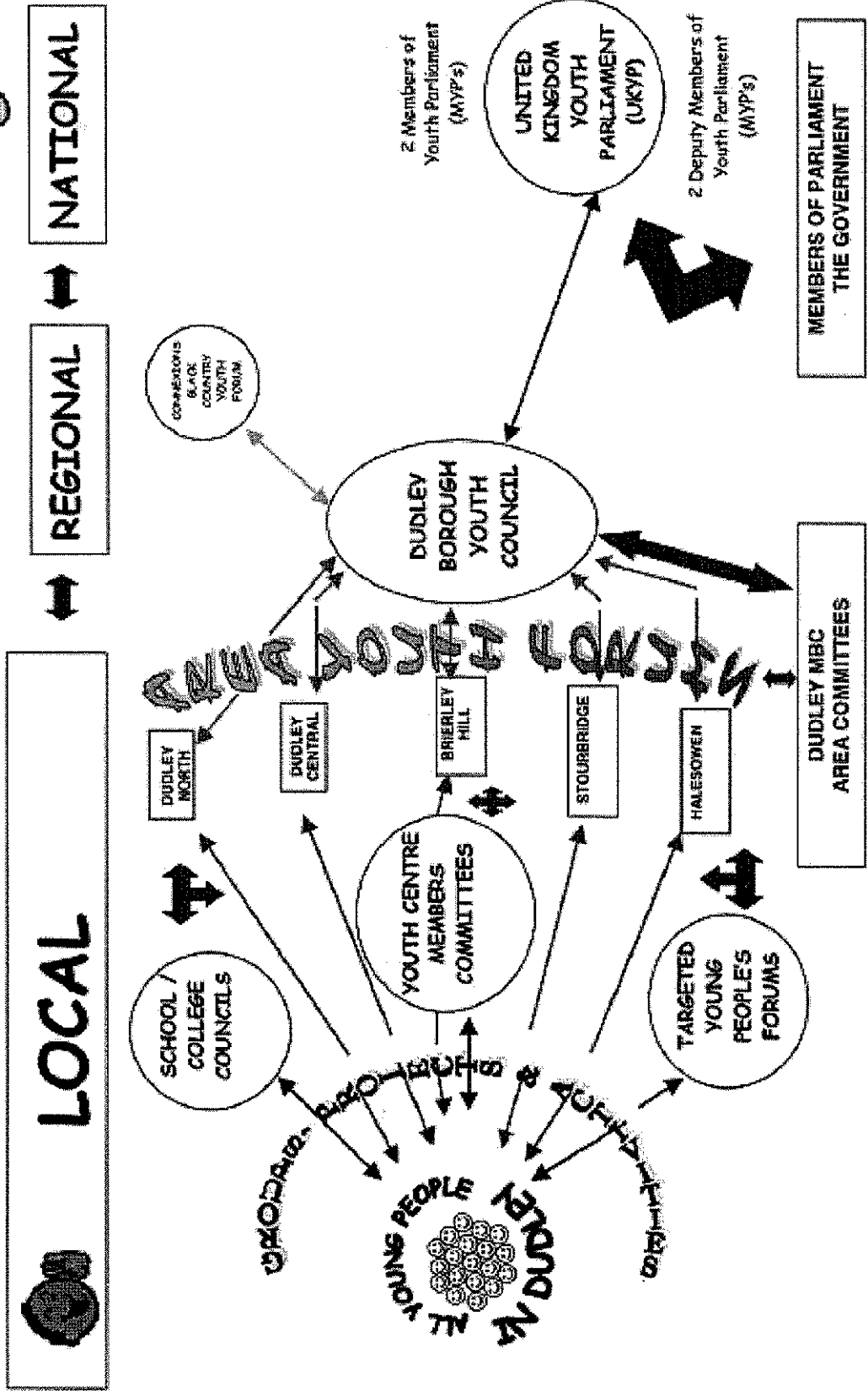
This proposed Targeted offer, outlined in Pages 16 to 20, has been identified against need and can be delivered within the budget available.

The Directorate of Children's Services seeks your comment on that offer.

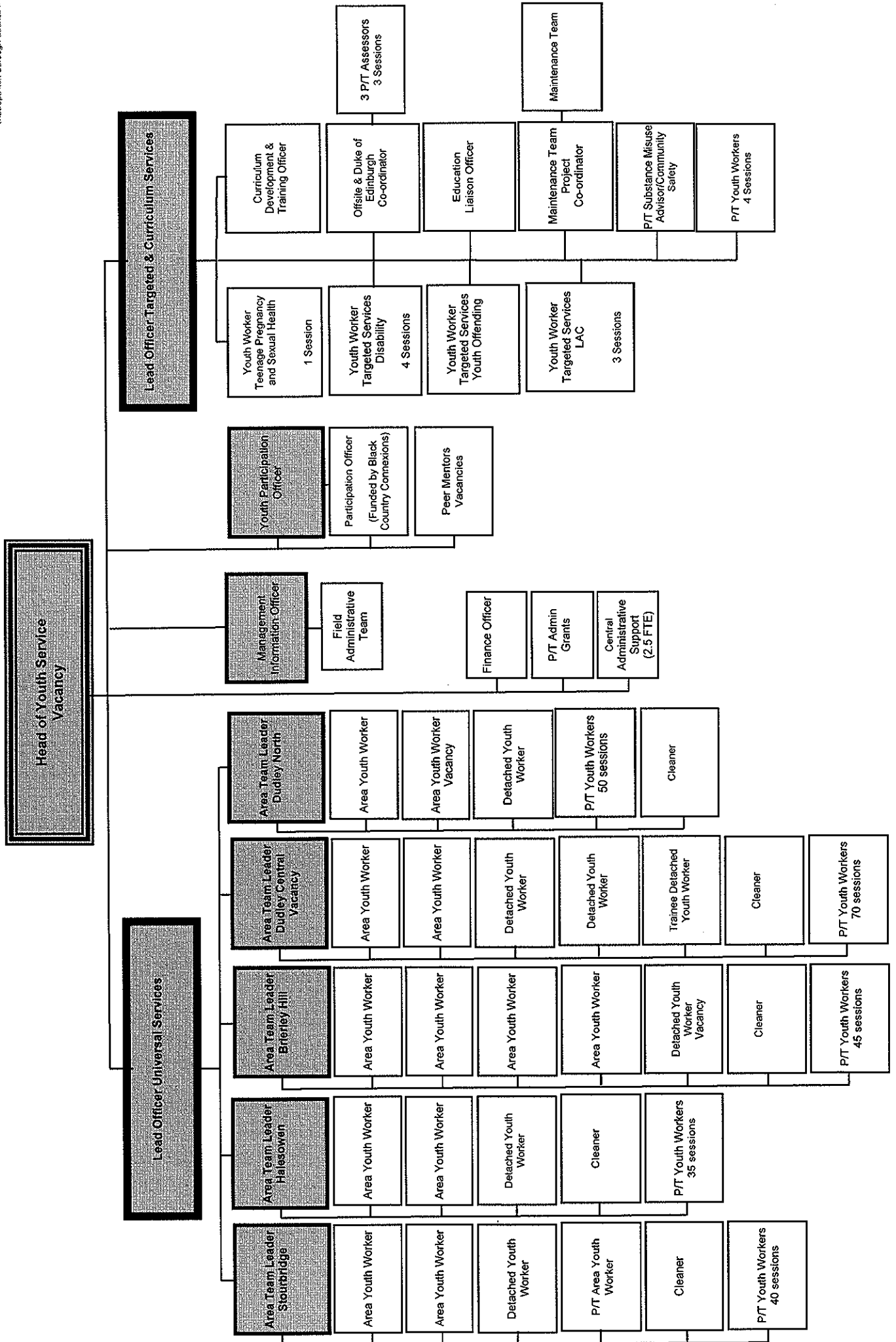
- 1. The Council would like your view as to the suitability of this Targeted offer to the identified groups.**
- 2. If you are responding on behalf of an organisation, please state if you are willing to discuss closer working arrangements in order to enhance these offers, name of organisation, areas of support which may be possible and contact details.**

Appendix A

# GIVING YOUNG PEOPLE A VOICE IN DUDLEY



# APPENDIX B - DUDLEY METROPOLITAN BOROUGH COUNCIL YOUTH SERVICE TEAM



## **References**

1. Green Paper – Every Child Matters
2. Green Paper – Youth Matters
3. Next Steps
4. Aiming High for young people – a 10 year strategy

All available at <http://publications.everychildmatters.gov.uk/>

5. Transforming Youth Work – available at  
[http://www.nya.org.uk/shared\\_asp\\_files/GFSR.asp?NodeID=108410](http://www.nya.org.uk/shared_asp_files/GFSR.asp?NodeID=108410)

**Comments on the Youth Service Consultation**

**Please return this form to:**

**Laura Ferrington  
Team Manager - Executive Support Team  
Westox House  
1 Trinity Road  
Dudley  
West Midlands DY1 1JQ**

**Email:** [director.children@dudley.gov.uk](mailto:director.children@dudley.gov.uk)

**Fax:** 01384 814202

**Name:** ..... **Organisation:** .....

**Contact email address** .....

This proposed **Universal Offer**, outlined in Pages 11 to 15 has been identified against need, and can be delivered within the budget available. The Directorate of Children's Services seeks your comment on that offer.

**1. The Council would like your views as to the suitability and range of activities outlined within Dudley Youth Service's Universal Offer.**



**2. If you are responding on behalf of an organisation, please state if you are willing to discuss closer working arrangements in order to enhance the offer.**

**Organisation:**

**Contact Details:**

**Area for which support may be possible:**

This proposed **Targeted Offer**, outlined in Pages 16 to 20, has been identified against need and can be delivered within the budget available.

The Directorate of Children's Services seeks your comment on that offer.

**1. The Council would like your view as to the suitability of this Targeted offer to the identified groups.**

**2. If you are responding on behalf of an organisation, please state if you are willing to discuss closer working arrangements in order to enhance these offers.**

**Organisation:**

**Contact Details:**

**Area for which support may be possible:**

**Any other comments (please use additional sheets of paper where required)**

The information you give on this form will be used to enable Dudley Council to assess the impact of its policies on all sections of the community.

The details you provide will be treated confidentially and will be used to ensure that the views of a wide range of groups and individuals are included in the consultation process and given the opportunity to shape Council policies.

If you are completing this form on behalf of an organisation please try to answer the questions in general terms about the people your organisation represents.

<input type="checkbox"/>	Individuals response
<input type="checkbox"/>	Organisations response

**1. Please indicate whether you are responding as an individual or on behalf of an organisation:**

**2. I would describe my ethnic group, or the ethnic group/s represented by my organisation as:**

**ASIAN OR ASIAN BRITISH**

<input type="checkbox"/> Bangladeshi	<input type="checkbox"/> Indian	<input type="checkbox"/> Pakistani
<input type="checkbox"/> Any Other Asian background		

**BLACK OR BLACK BRITISH**

<input type="checkbox"/> African	<input type="checkbox"/> Caribbean	<input type="checkbox"/> Any Other Black Background
----------------------------------	------------------------------------	---

**CHINESE OR OTHER**

<input type="checkbox"/> Chinese	<input type="checkbox"/> Other
----------------------------------	--------------------------------

**MIXED**

<input type="checkbox"/> Asian & White	<input type="checkbox"/> Black African & White	<input type="checkbox"/> Black Caribbean & White
<input type="checkbox"/> Any Other Mixed background		

**WHITE**

British  Irish  Any Other White Background

**RANGE OF ETHNICITIES**

**3. I would describe my religion/belief or the religion/beliefs of the people represented by my organisation as:**

Buddhist  No Religion  
 Christian  Sikh  
 Hindu  Other  
 Jewish  A range of religions/beliefs  
 Muslim  Unknown

**4. My gender or the gender of the people my organisation represents is:**

Female  Male  
 Mixed

**5. My age or the age range of the people my organisation represents is:**

<input type="checkbox"/>	Under 5 years old	<input type="checkbox"/>	26 – 35 years old
<input type="checkbox"/>	5 – 10 years old	<input type="checkbox"/>	36 – 45 years old
<input type="checkbox"/>	11 – 16 years old	<input type="checkbox"/>	46 – 55 years old
<input type="checkbox"/>	17 – 19 years old	<input type="checkbox"/>	Over 56 years old
<input type="checkbox"/>	20 – 25 years old	<input type="checkbox"/>	A range of ages

**6. I consider myself or many of the people my organisation represents to be:**

Disabled  Not disabled

**Note:**

The Disability Discrimination Act, 1995 defines a “disabled person” as having “a physical or mental impairment which has a substantial or long term adverse effect on their ability to carry out normal day to day activities”.

**Thank you for completing this form.**

**Please return this form with your consultation response to**

**Laura Ferrington  
Team Manager - Executive Support Team  
Westox House  
1 Trinity Road  
Dudley  
West Midlands DY1 1JQ  
Email: [director.children@dudley.gov.uk](mailto:director.children@dudley.gov.uk)  
Fax: 01384 814202**