

Dudley archives and local history service
discovering the borough's past



Dudley archives and local history service

Proposed relocation



working in partnership with Sandwell Council and The Black Country Living Museum



Proposed relocation

Dudley archives and local history service
discovering the borough's past

Dudley borough has a rich and diverse heritage which is safeguarded by our Dudley archives and local history service.

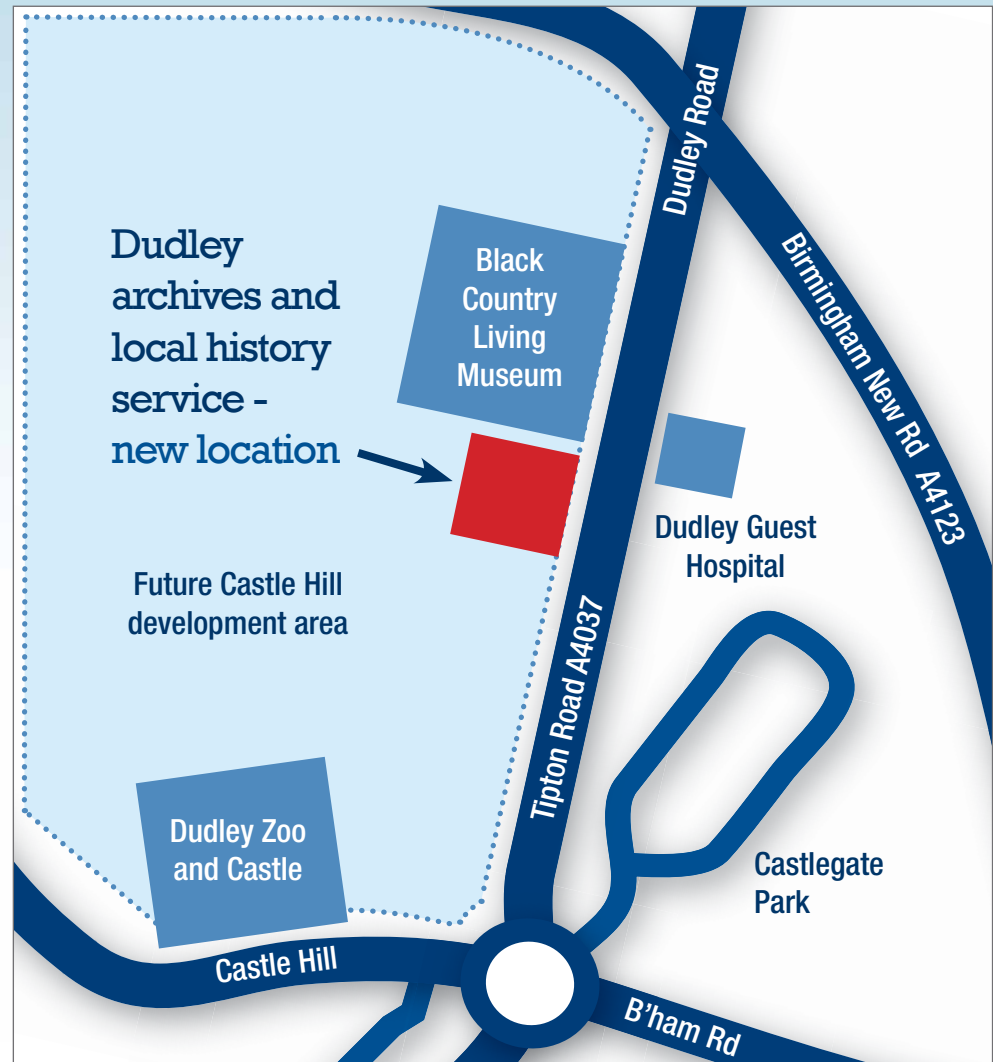
The service provides a passport to the past for local people, being home to thousands of records about people, businesses and organisations.



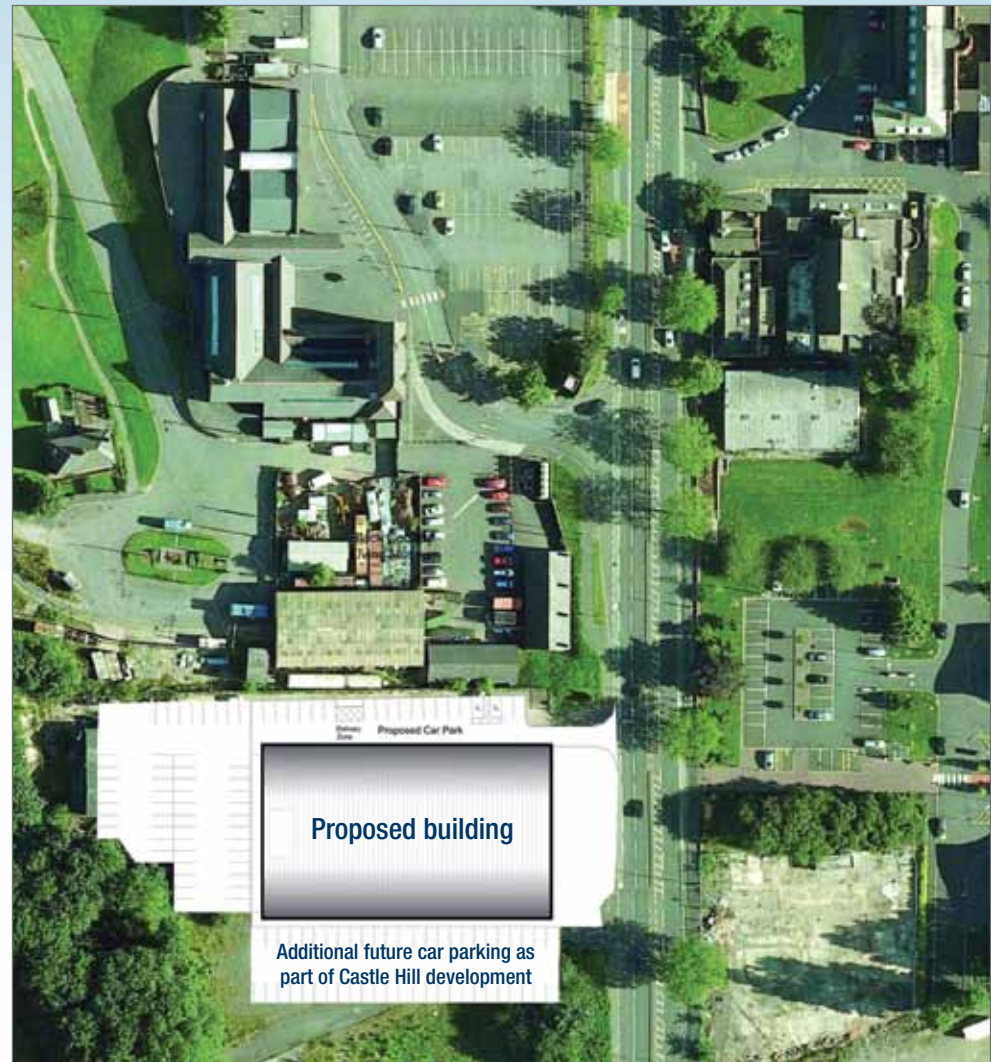
In line with our recognition of the importance of protecting the borough's heritage, we are planning to relocate the service to an innovative eco-friendly, energy efficient building in central Dudley.

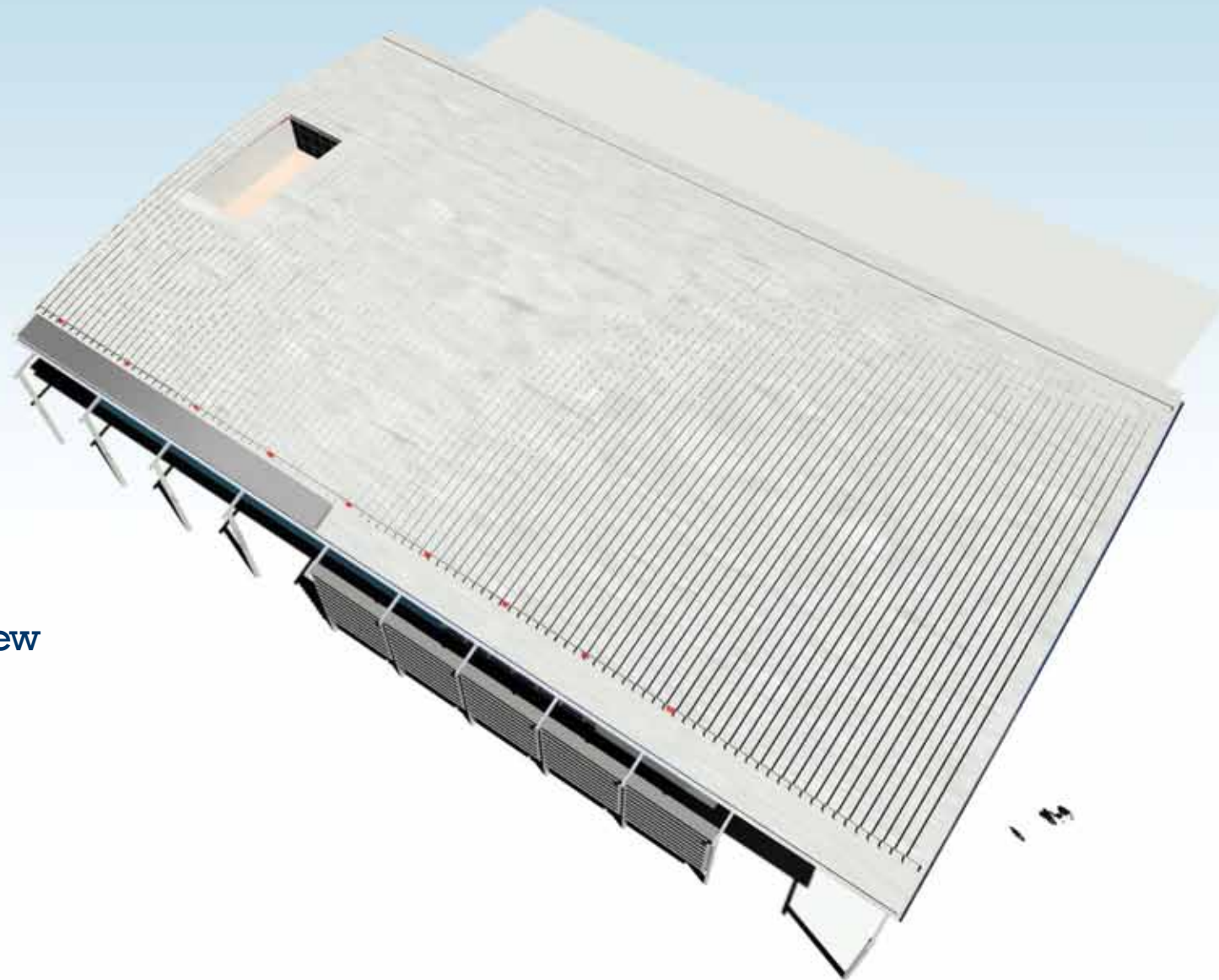


The new building will form part of an exciting redevelopment project on Castle Hill. It will be located on Tipton Road, next to the Black Country Living Museum, with which it has a natural association.

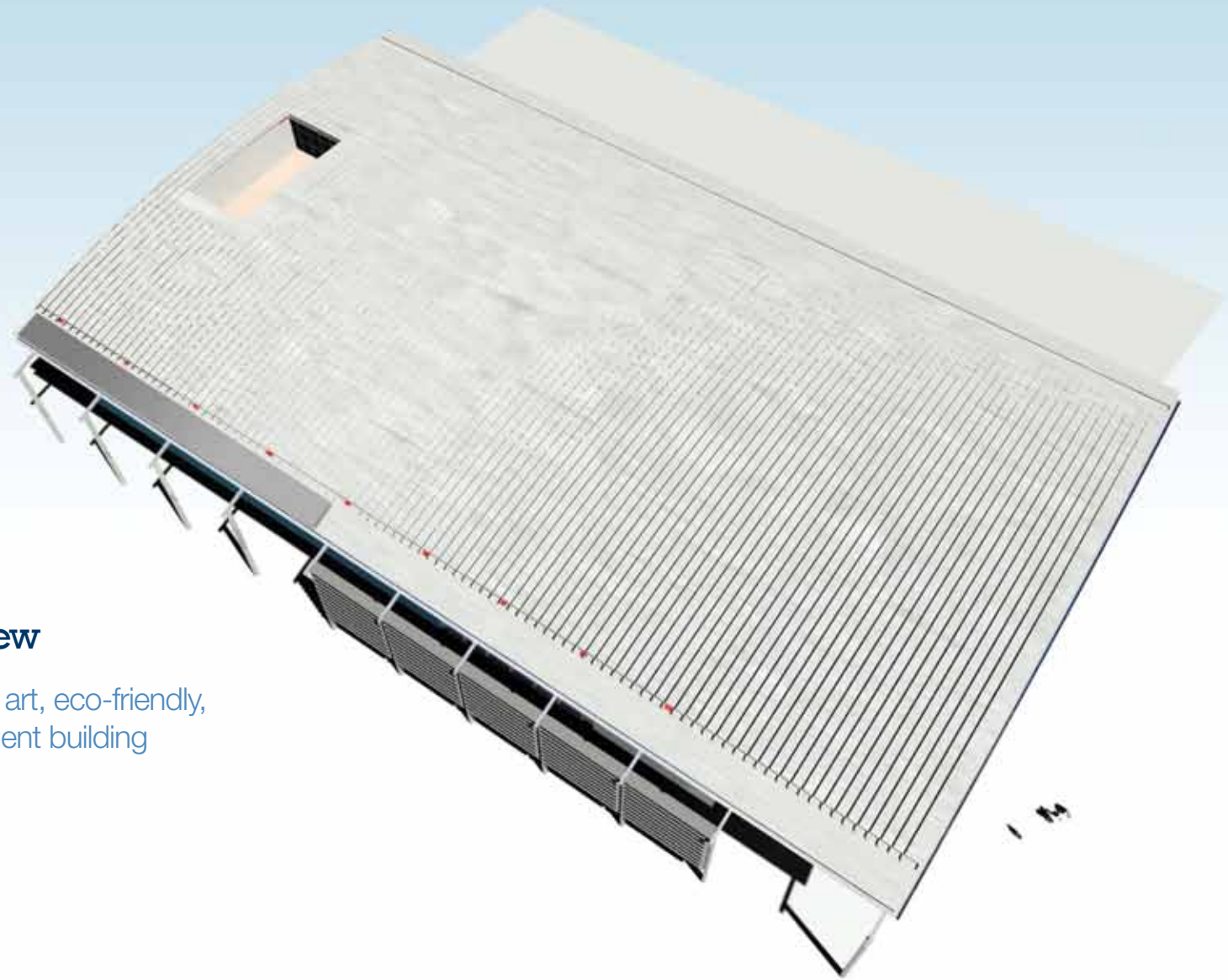


Subject to planning approval, the project should begin in autumn 2011.



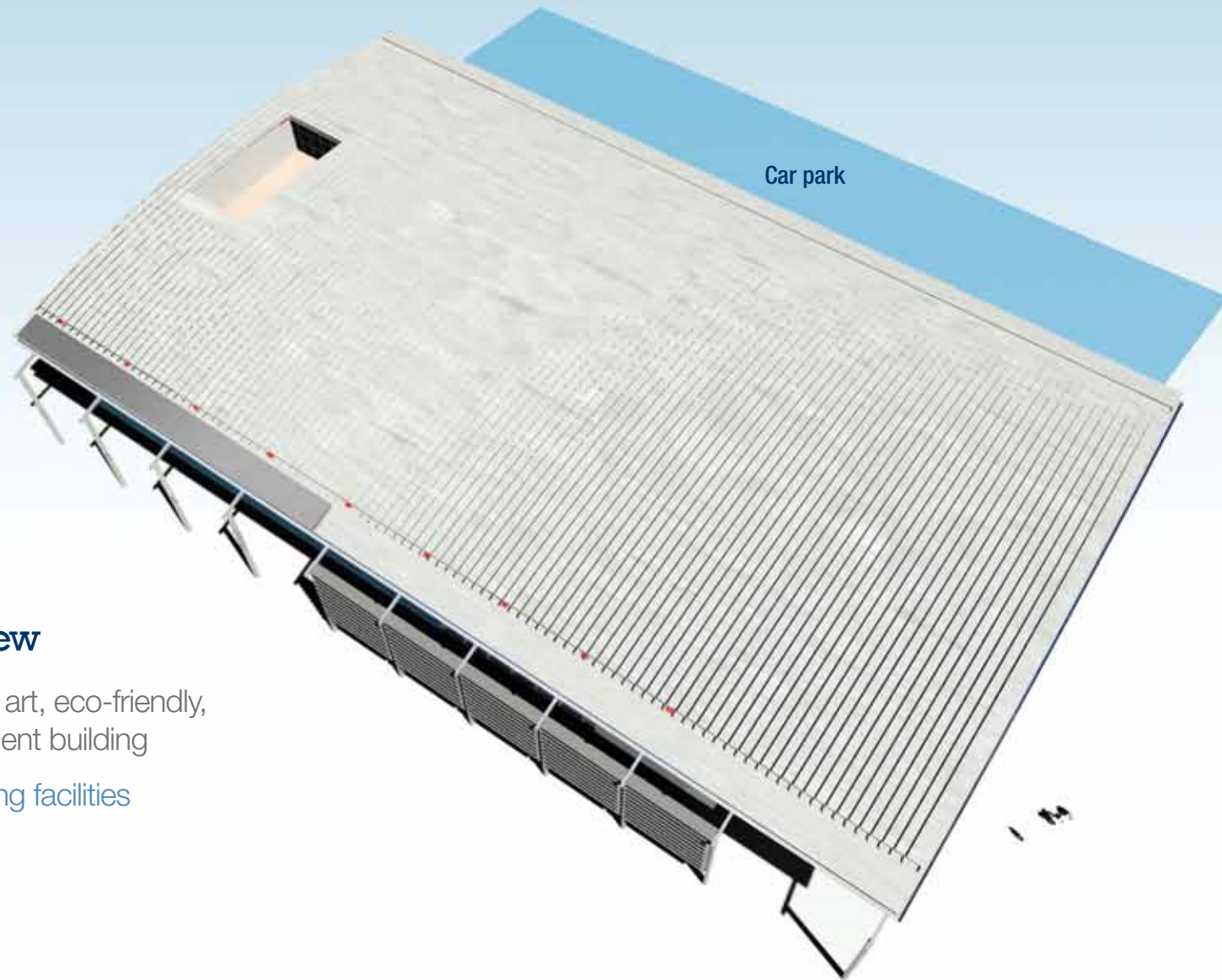


External view



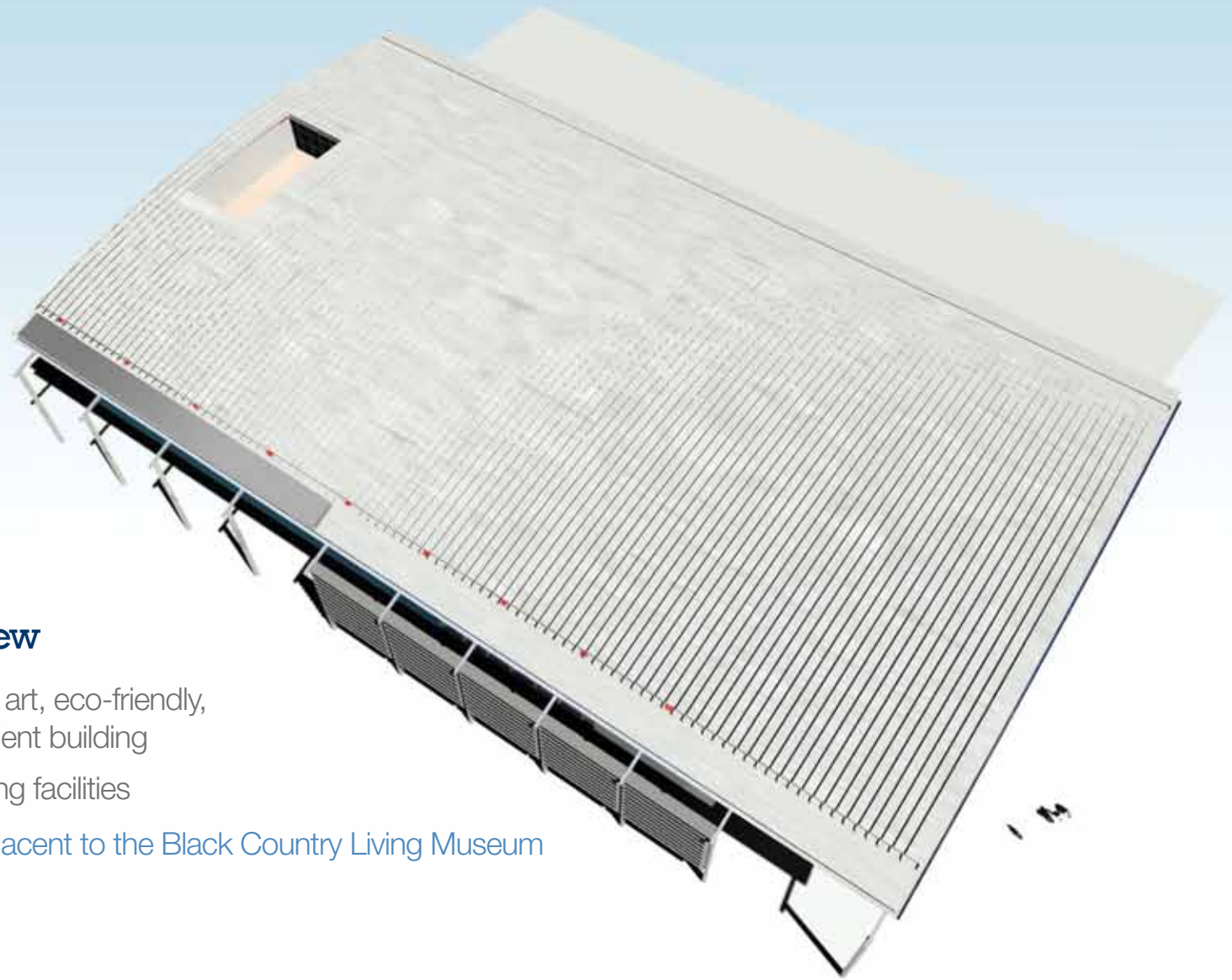
External view

- State of the art, eco-friendly, energy efficient building



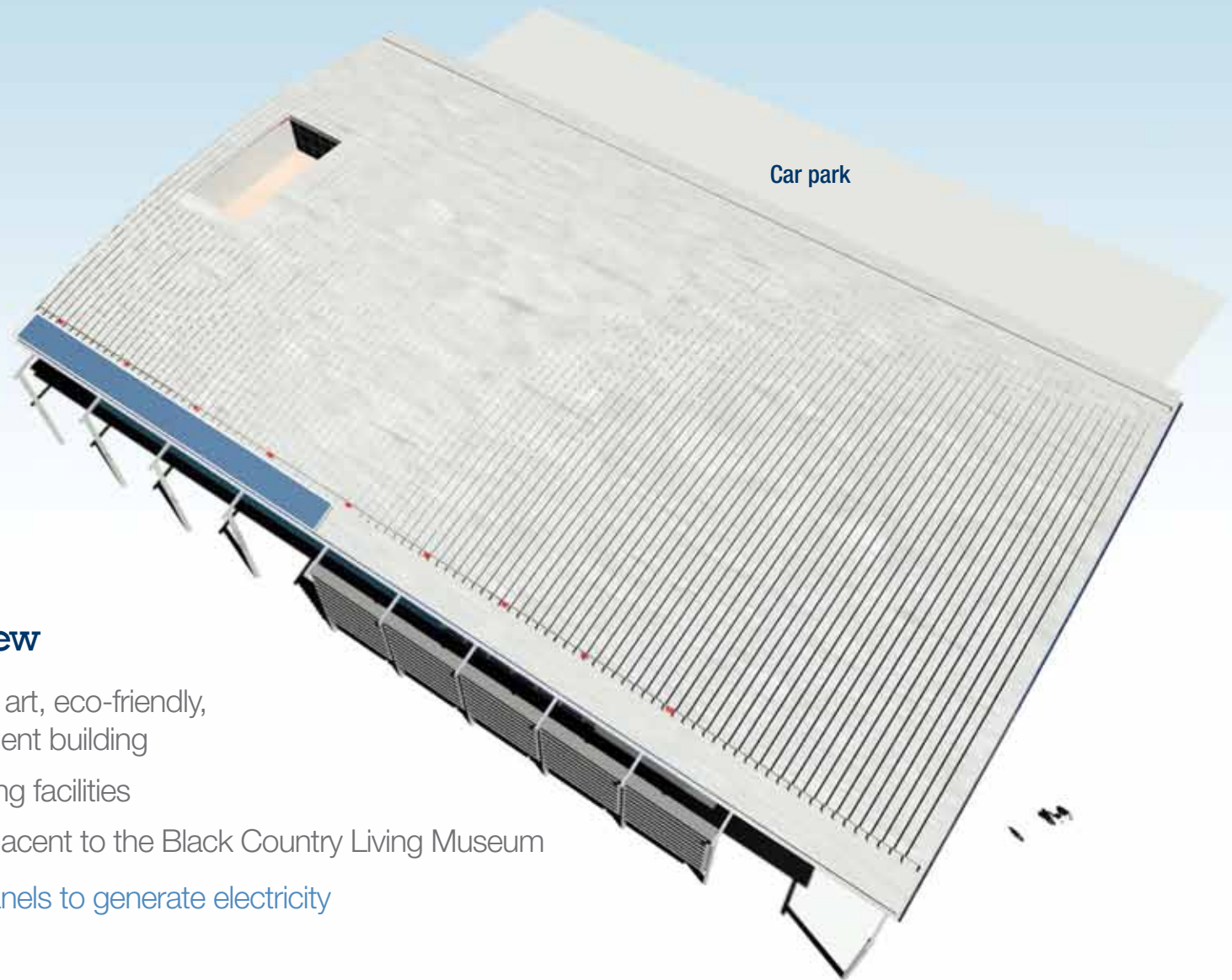
External view

- State of the art, eco-friendly, energy efficient building
- Good parking facilities



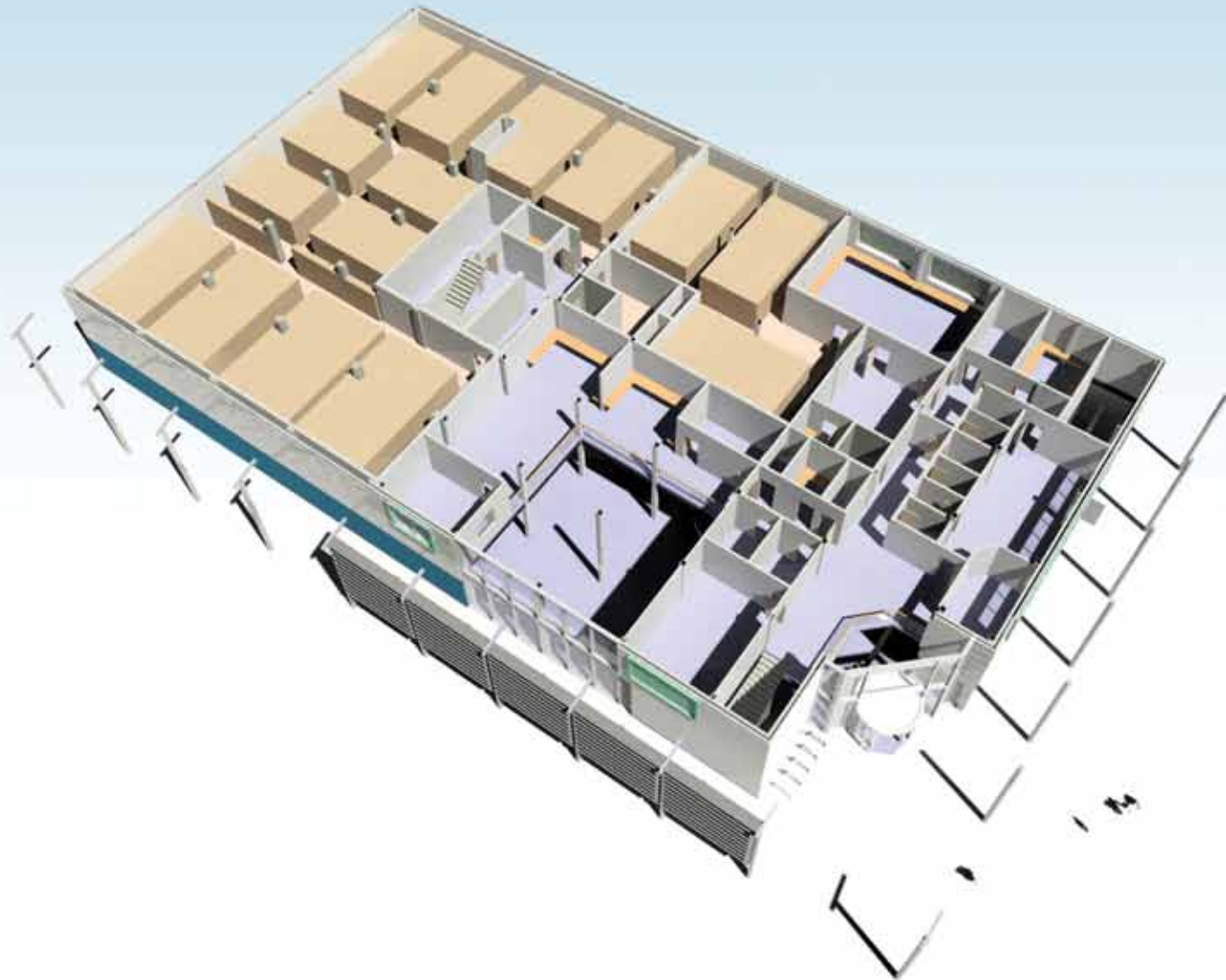
External view

- State of the art, eco-friendly, energy efficient building
- Good parking facilities
- Situated adjacent to the Black Country Living Museum

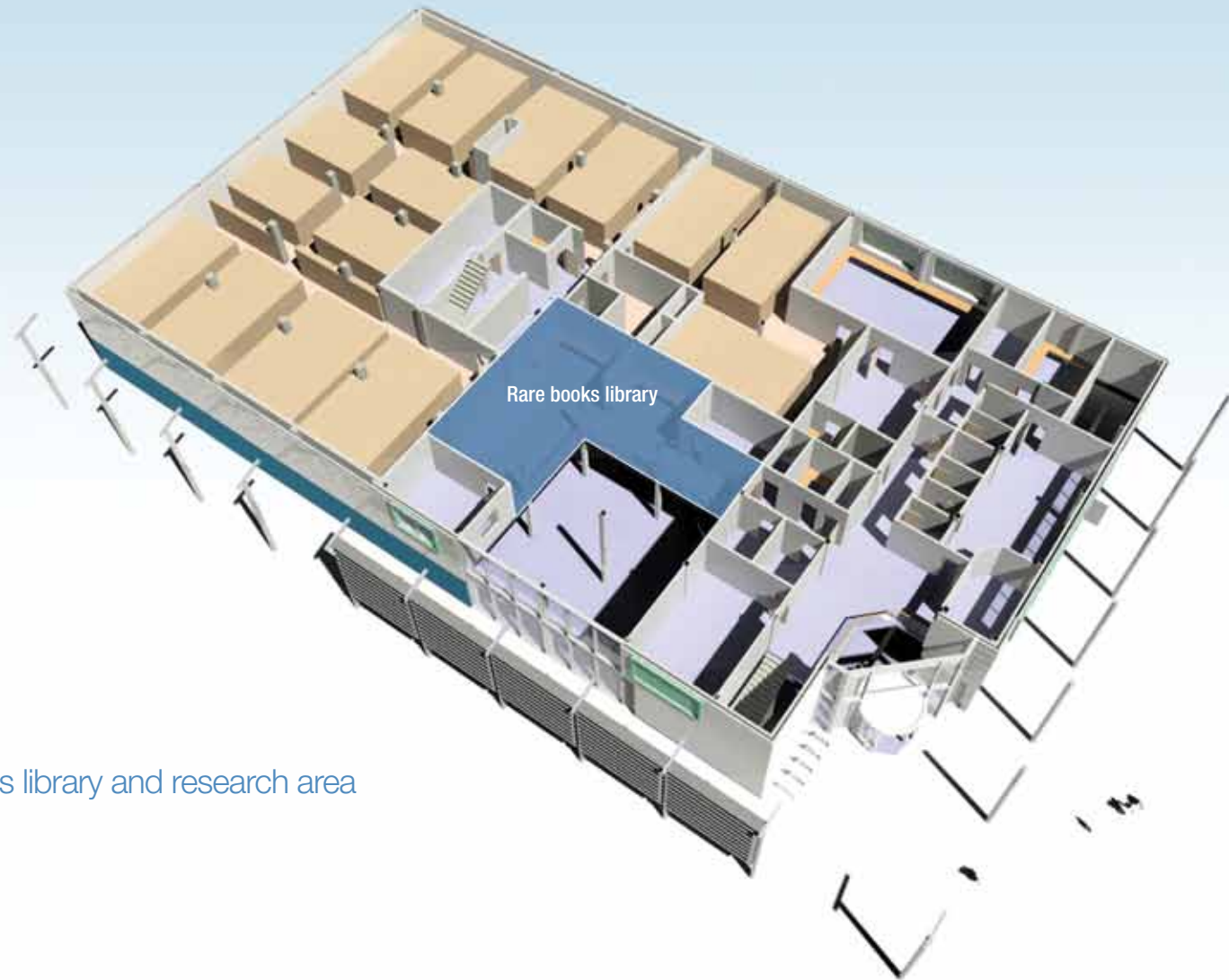


External view

- State of the art, eco-friendly, energy efficient building
- Good parking facilities
- Situated adjacent to the Black Country Living Museum
- Solar PV panels to generate electricity

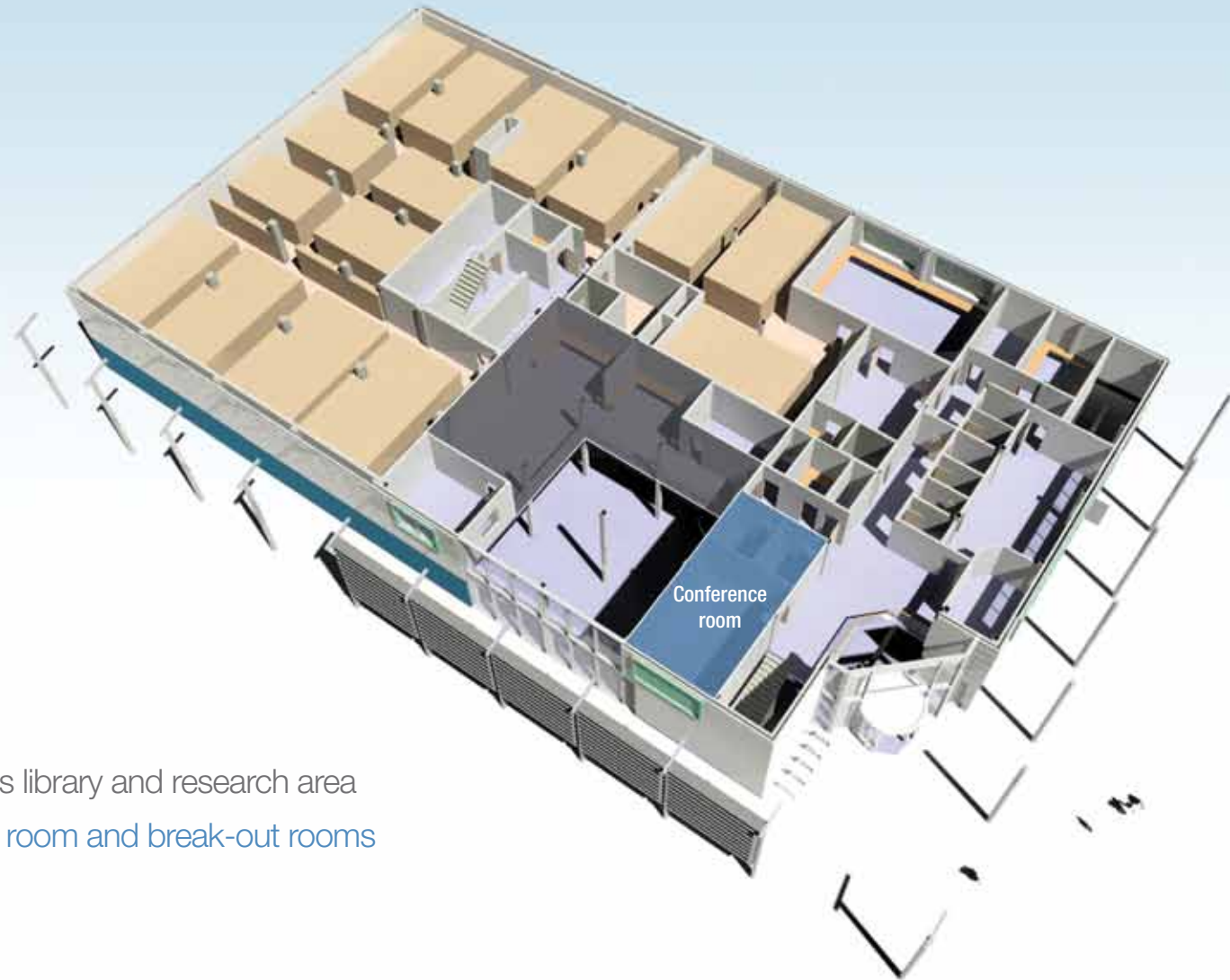


First floor



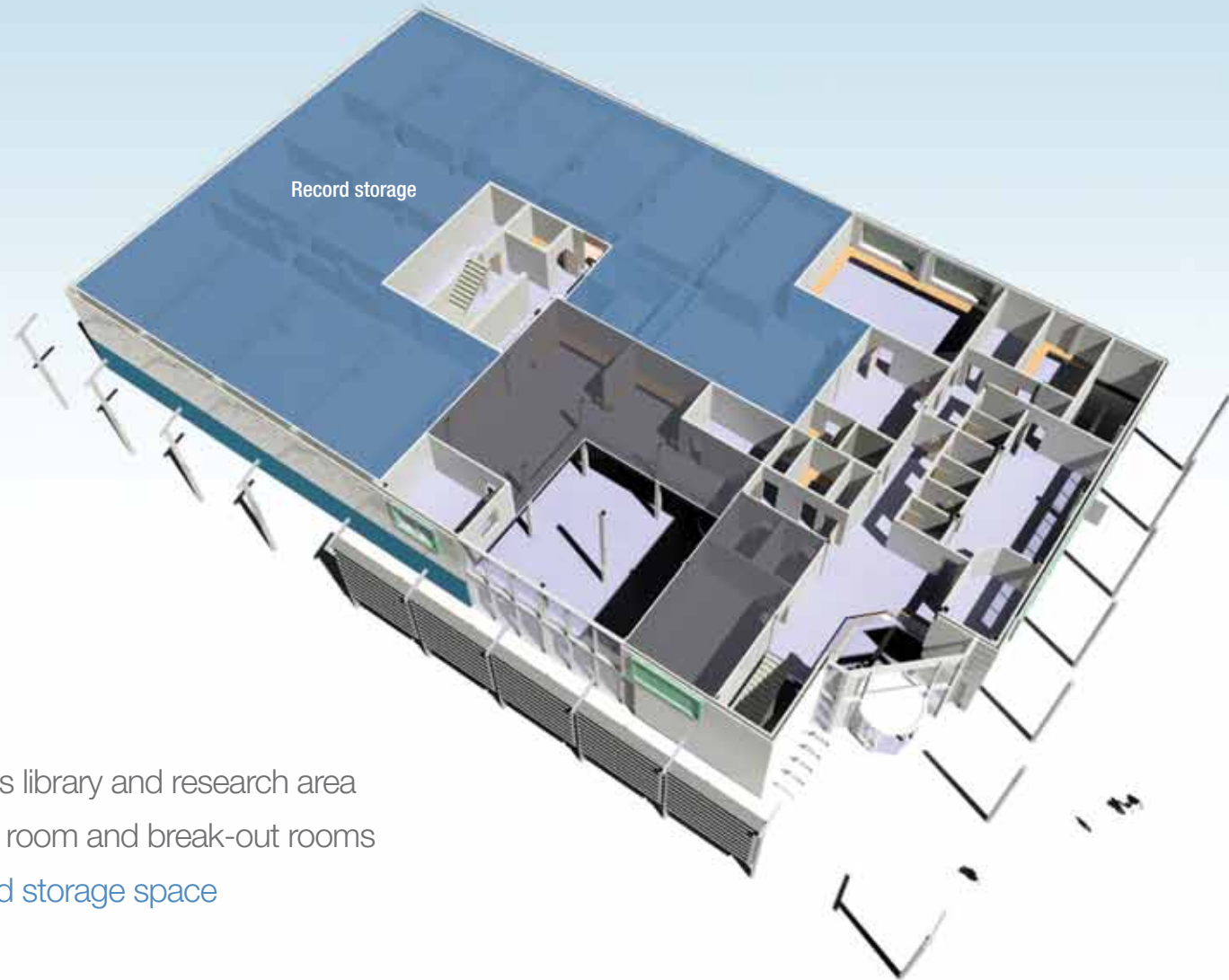
First floor

- A rare books library and research area



First floor

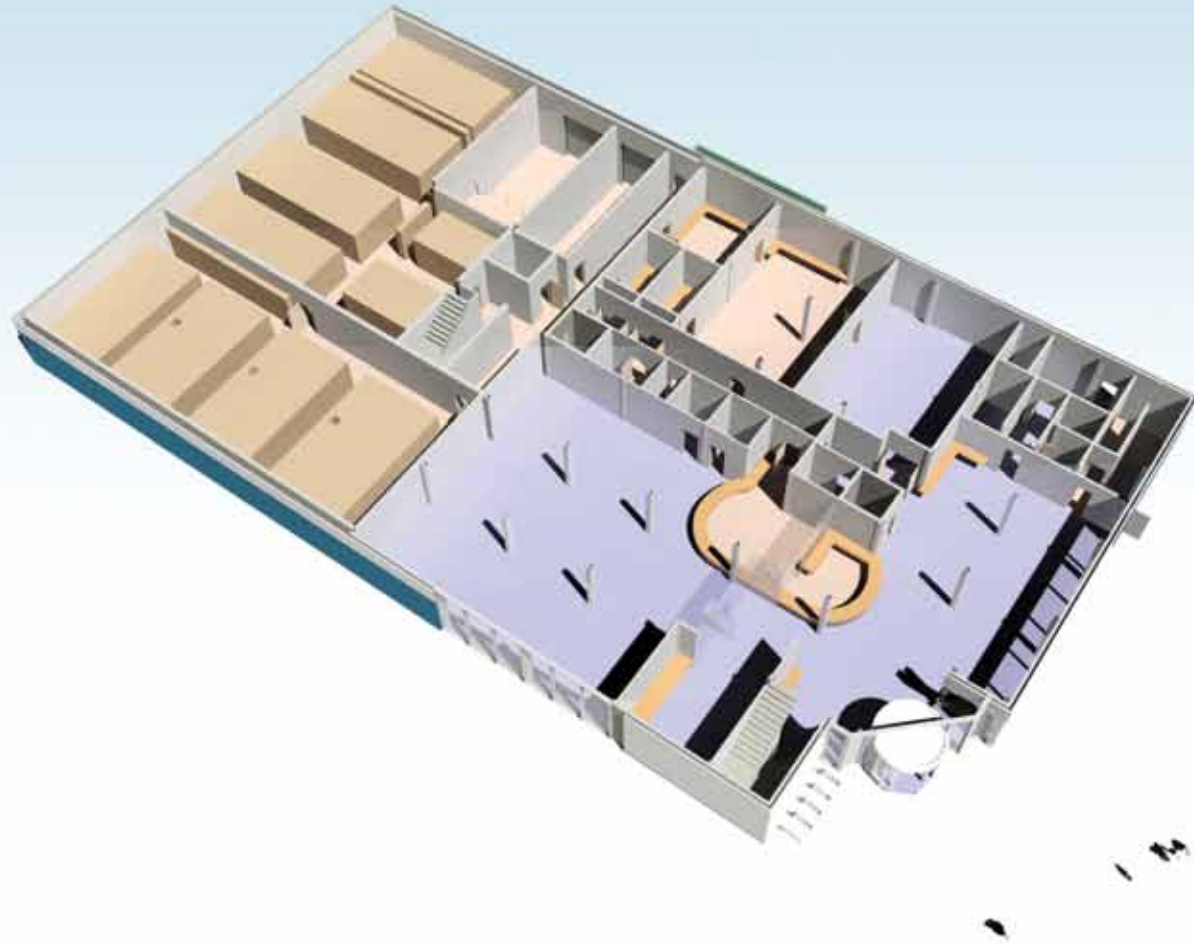
- A rare books library and research area
- Conference room and break-out rooms

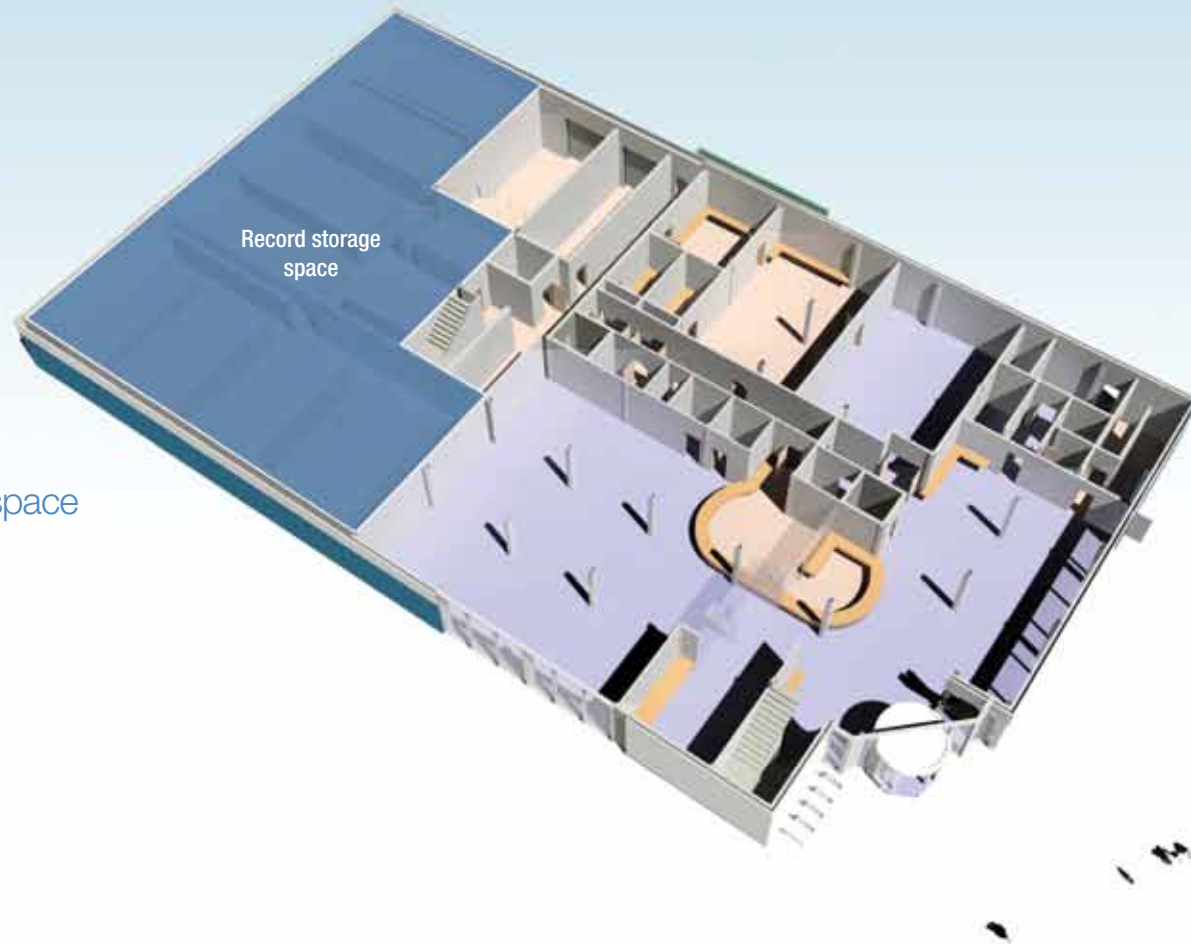


First floor

- A rare books library and research area
- Conference room and break-out rooms
- Large record storage space

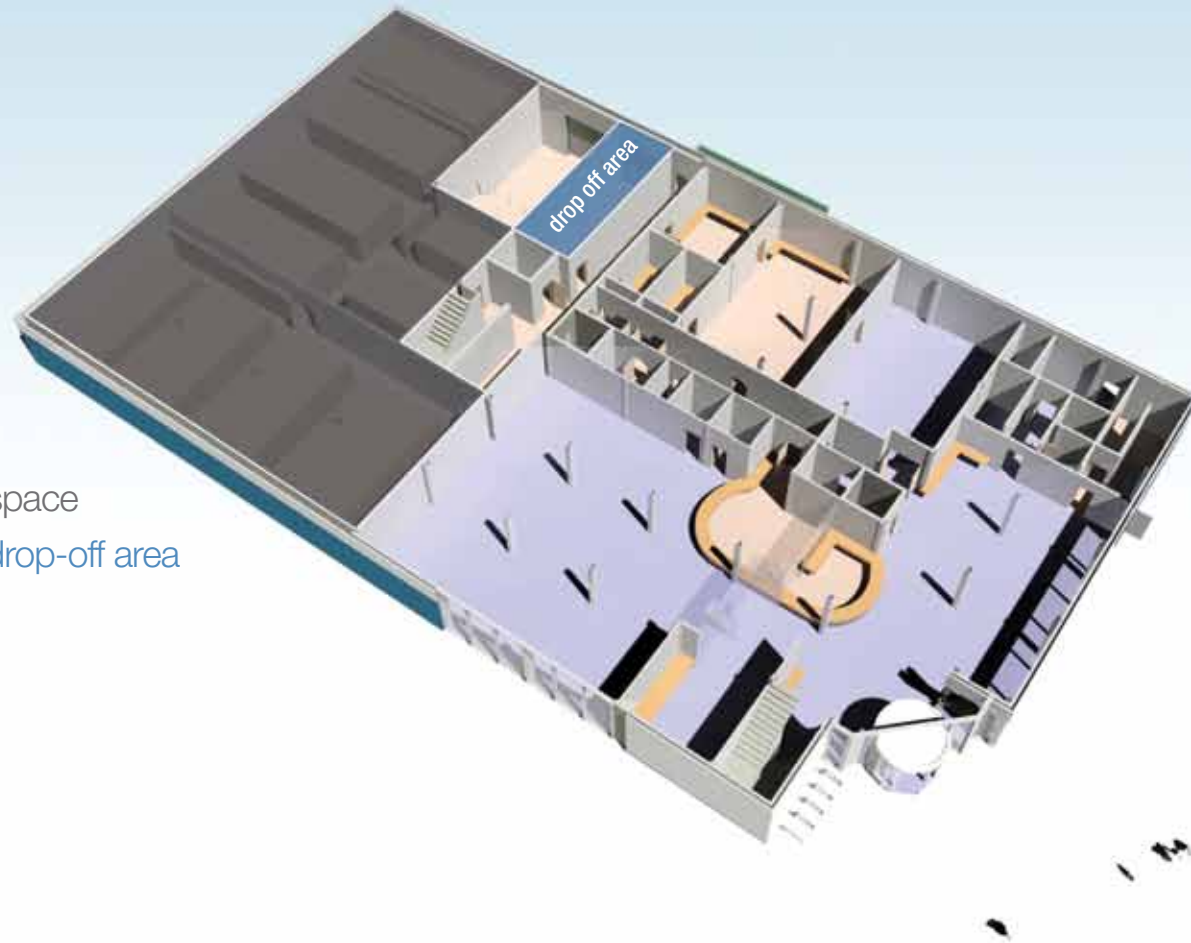
Ground floor





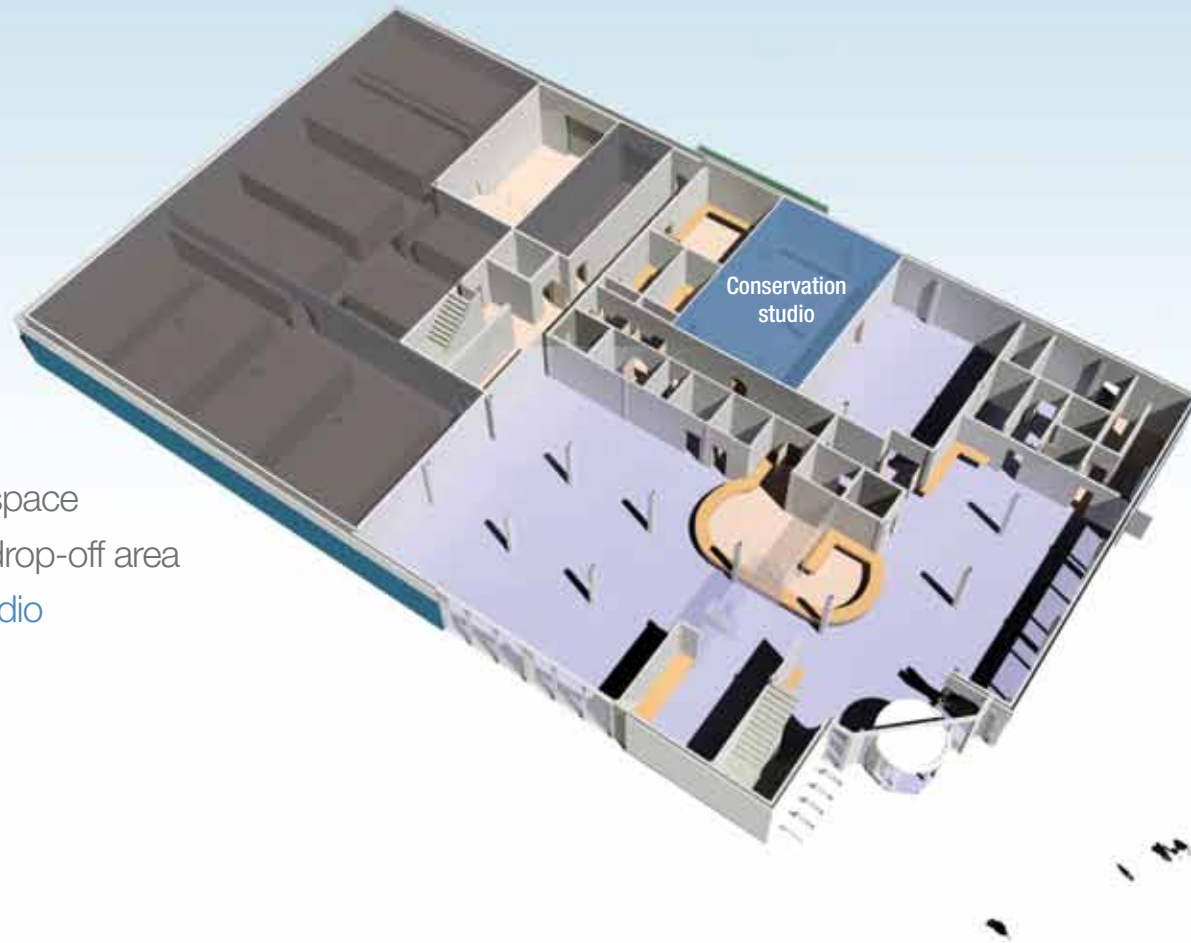
Ground floor

- Record storage space



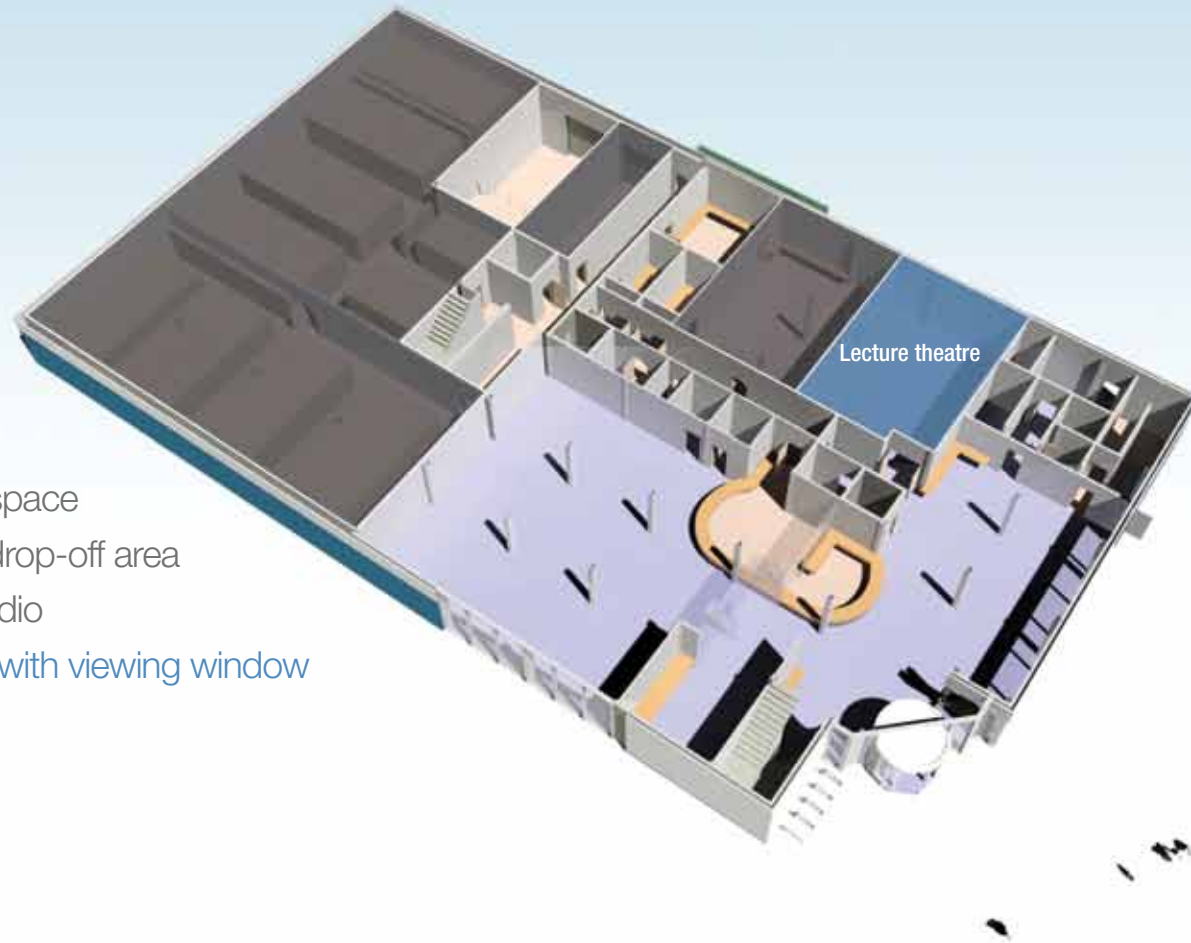
Ground floor

- Record storage space
- Internal records drop-off area



Ground floor

- Record storage space
- Internal records drop-off area
- Conservation studio

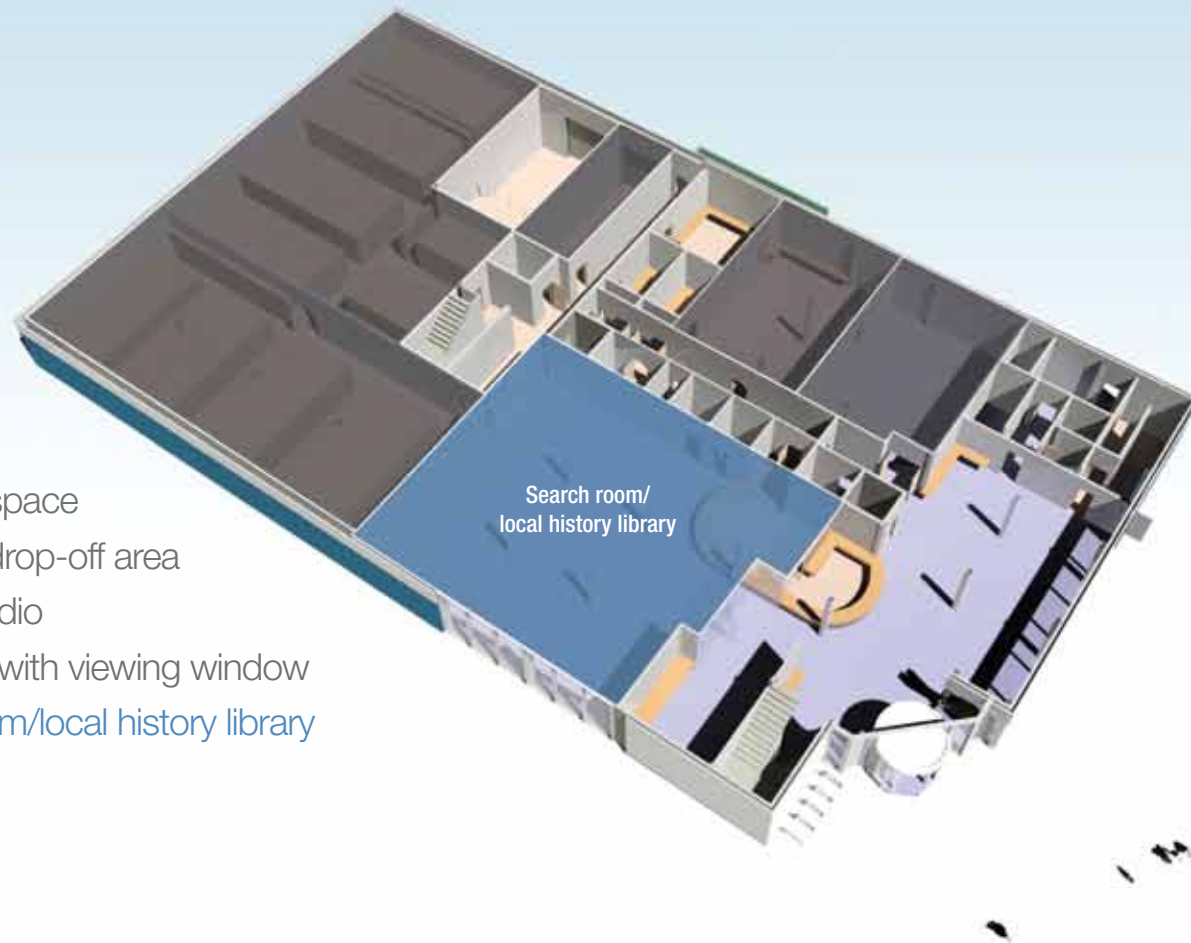


Ground floor

- Record storage space
- Internal records drop-off area
- Conservation studio
- A lecture theatre with viewing window

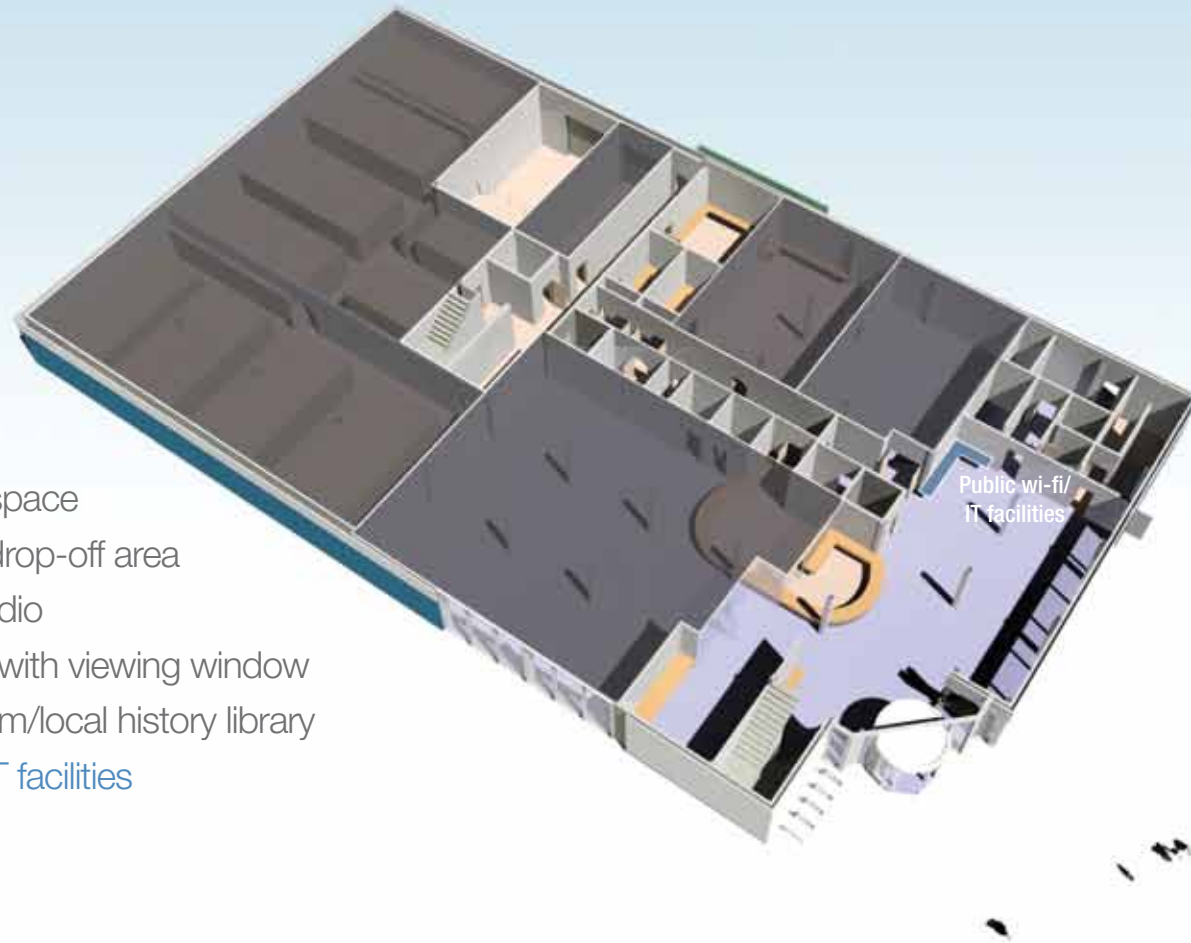
Ground floor

- Record storage space
- Internal records drop-off area
- Conservation studio
- A lecture theatre with viewing window
- Large search room/local history library



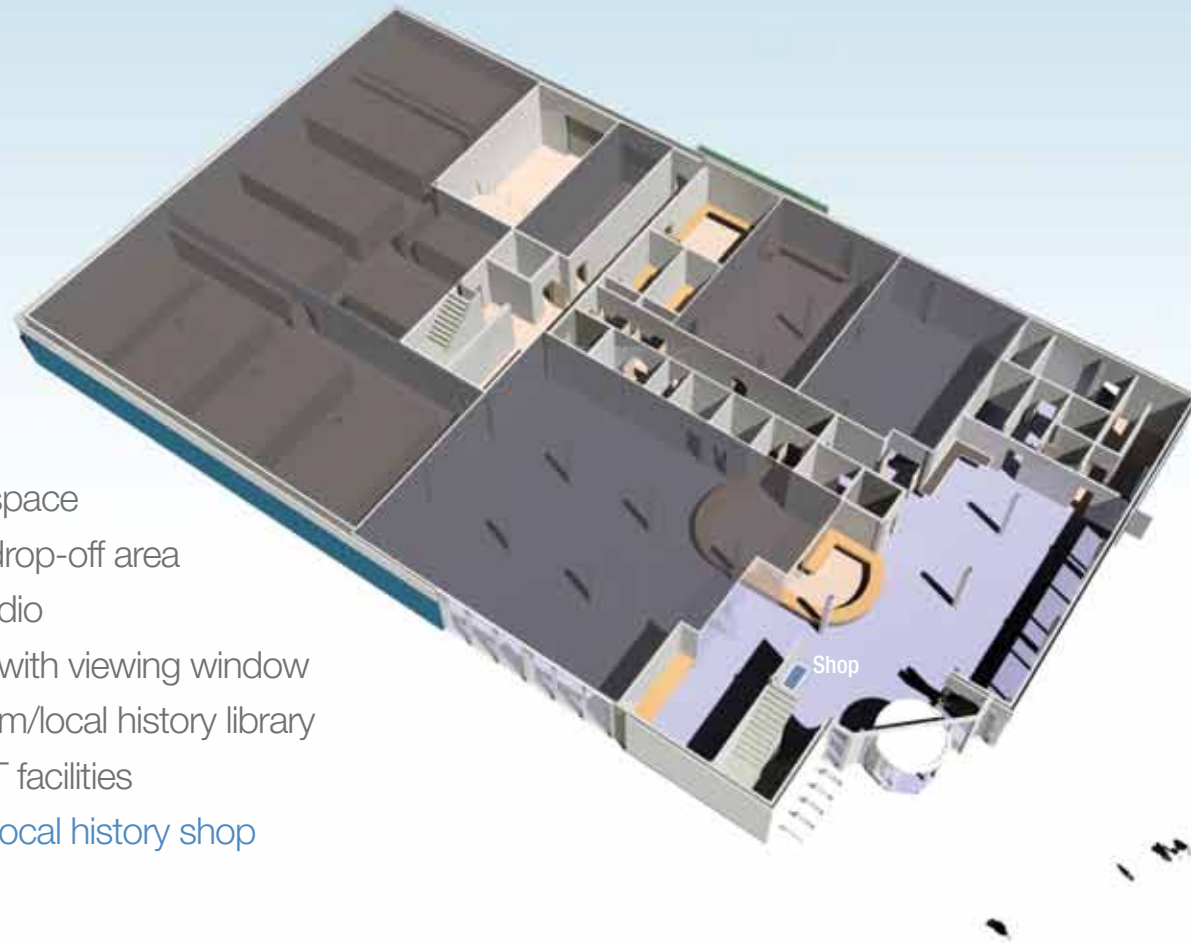
Ground floor

- Record storage space
- Internal records drop-off area
- Conservation studio
- A lecture theatre with viewing window
- Large search room/local history library
- Public wi-fi and IT facilities



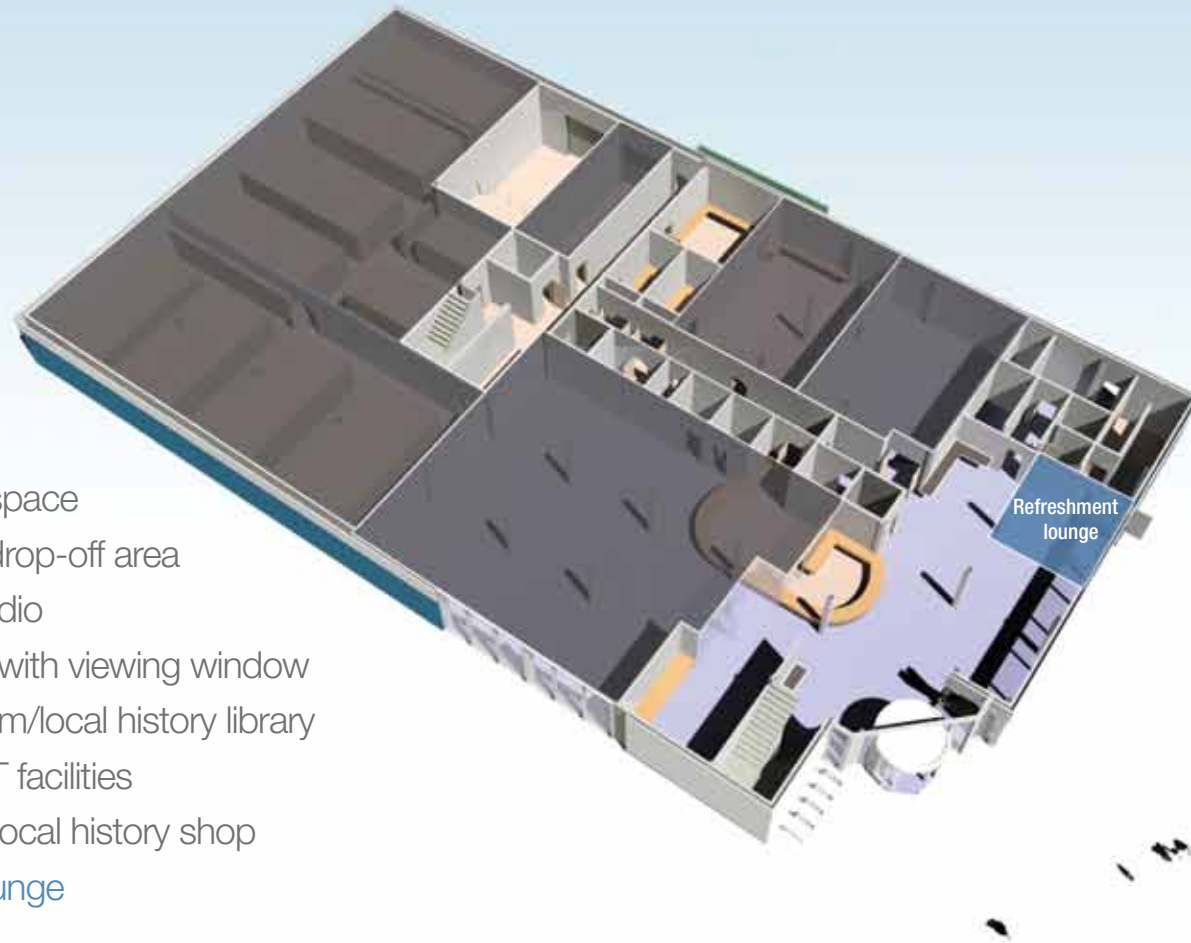
Ground floor

- Record storage space
- Internal records drop-off area
- Conservation studio
- A lecture theatre with viewing window
- Large search room/local history library
- Public wi-fi and IT facilities
- An archives and local history shop



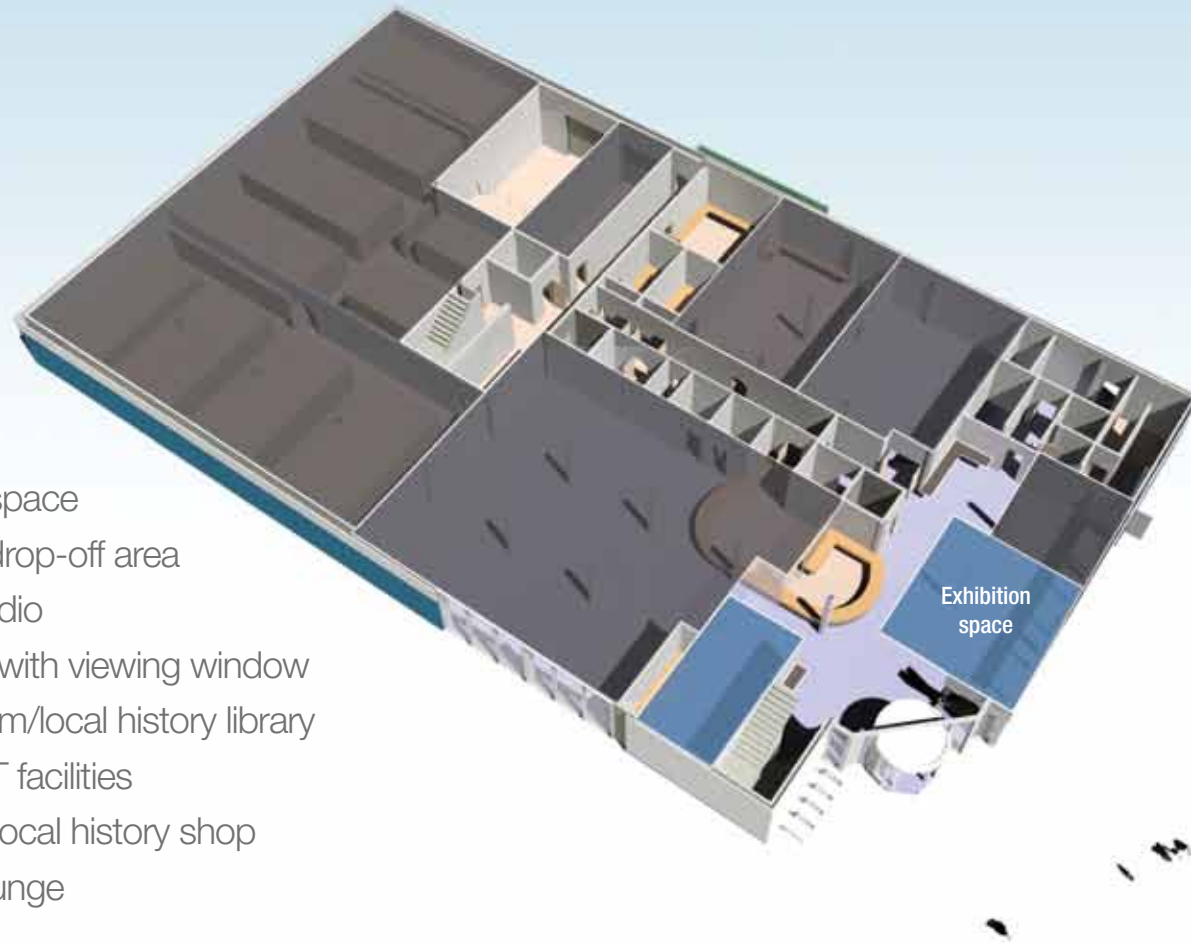
Ground floor

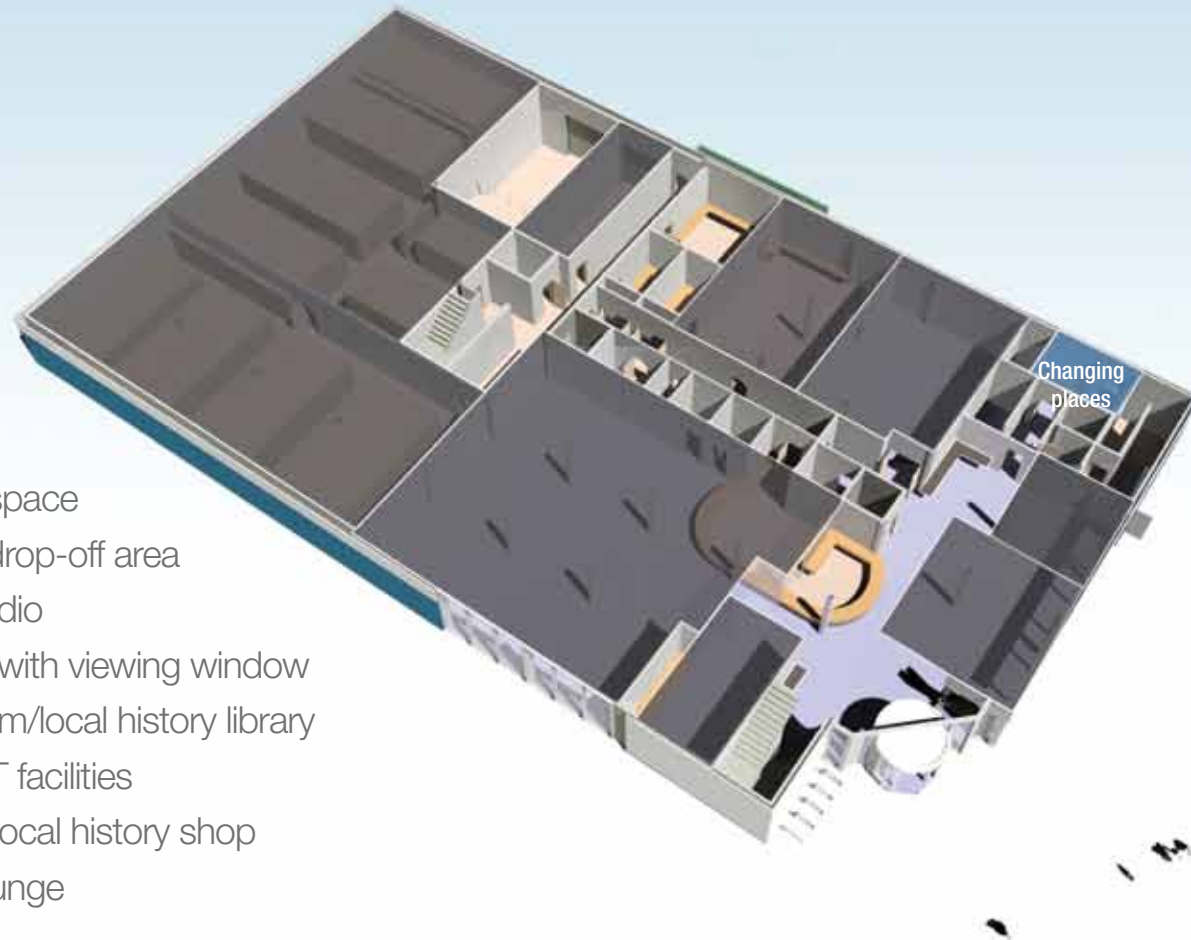
- Record storage space
- Internal records drop-off area
- Conservation studio
- A lecture theatre with viewing window
- Large search room/local history library
- Public wi-fi and IT facilities
- An archives and local history shop
- A refreshment lounge



Ground floor

- Record storage space
- Internal records drop-off area
- Conservation studio
- A lecture theatre with viewing window
- Large search room/local history library
- Public wi-fi and IT facilities
- An archives and local history shop
- A refreshment lounge
- Exhibition space

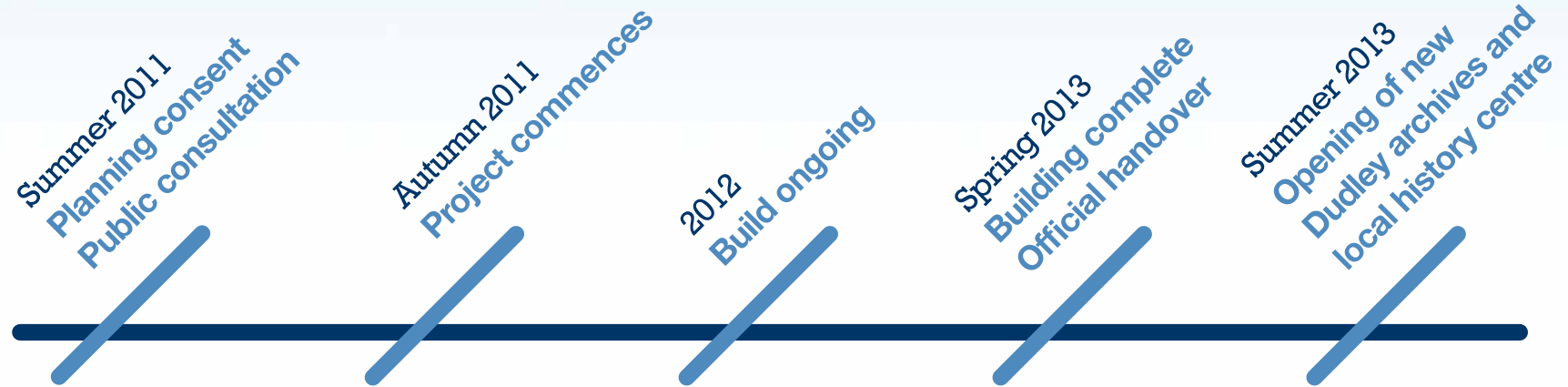




Ground floor

- Record storage space
- Internal records drop-off area
- Conservation studio
- A lecture theatre with viewing window
- Large search room/local history library
- Public wi-fi and IT facilities
- An archives and local history shop
- A refreshment lounge
- Exhibition space
- 24 hour changing places

Project timeline



The new building will be provided and managed by Dudley Council and used jointly with The Black Country Living Museum and Sandwell Council.

Following the initial build, there is then a twenty year expansion plan, further developing the site with more facilities for local residents.



In partnership with

