

Health and Adult Social Care Scrutiny Committee  
– 14<sup>th</sup> November 2022

Adult Safeguarding and Deprivation of Liberty  
Safeguards (DoLS)

- Matt Bowsher Director of Adult Social Care
- Dr Paul Kingston Independent Chair of Dudley Safeguarding Peoples Partnership.



# Key Achievements

- Development and launch of Citizen and professional portals which are available on the Safeguarding Board (DSPP) and local authority websites. This increases diversity of access and allows new concerns to be input directly to the Liquid Logic electronic recording system.
- The [Dudley Adults Portal](#) is available for residents, carers and professionals of Dudley



Referrers can be informed of outcomes more easily and securely and portal forms have been extensively tested with citizens to ensure they are easy to navigate and understand and there has been positive feedback from residents and professionals.

Delegated portals have also been developed providing a safer, quicker, and more robust process of information gathering between partners. This ensures all information pertaining to a safeguarding concern is recorded together transparently and securely, creating greater clarity in decision making and reducing room for error when storing sensitive data.





Data

Year	Concerns	% Increase From Previous Year	Enquiries	Conversion
2014/15	1713		726	42.4%
2015/16	2091	22.1%	743	35.5%
2016/17	2809	34.3%	831	29.6%
2017/18	3051	8.6%	727	23.8%
2018/19	3941	29.2%	752	19.1%
2019/20	5299	34.5%	773	14.6%
2020/21	5294	-0.1%	343	6.5%
2021/22	6156	16.3%	693	11.3%

The local authority continues to experience increased numbers of safeguarding concerns and based on monthly data to date we project that we will see around 6,300 concerns across 2022-23.

# Screening

Many Adults can appear vulnerable due to things such as: Mental ill health; age; disability;” chaotic” lifestyles; substance misuse etc but this does not mean they necessarily require support through Safeguarding, but it is important that concerns are raised so that proper checks can be made.

MASH screens and determine the appropriateness of referrals ensuring that safeguarding enquiries only progress where relevant. The higher referral rate reflects a greater awareness of safeguarding and of the MASH and the lower conversion rate demonstrates effective response which is targeted and that signposting or assessments take place instead of safeguarding where appropriate.

As illustrated in this case study

# Case Study

A contacted their MP expressing feelings of being distraught and suicidal, threatening to harm themselves and their son D due to the aggravation and noise they said they were experiencing from neighbours.

In response to the concern the Multi-Agency Safeguarding Hub (MASH) sent lateral to multi-agency partners including Health, Housing and the Police. Son D was an adult so checks with Children's services were not required. Contact was also made with A. and D.

On receipt of the checks and feedback it appeared that the threshold criteria had not been met for a Section 42 safeguarding enquiry. A advised they were not suicidal but frustrated as A wants to move property and Housing are aware. A advised they would not hurt themselves or their son. To support A

Although it was deemed not to be safeguarding support was offered

Contact with GP to request a referral to mental health support

A was also offered an assessment of need and a Carer's assessment

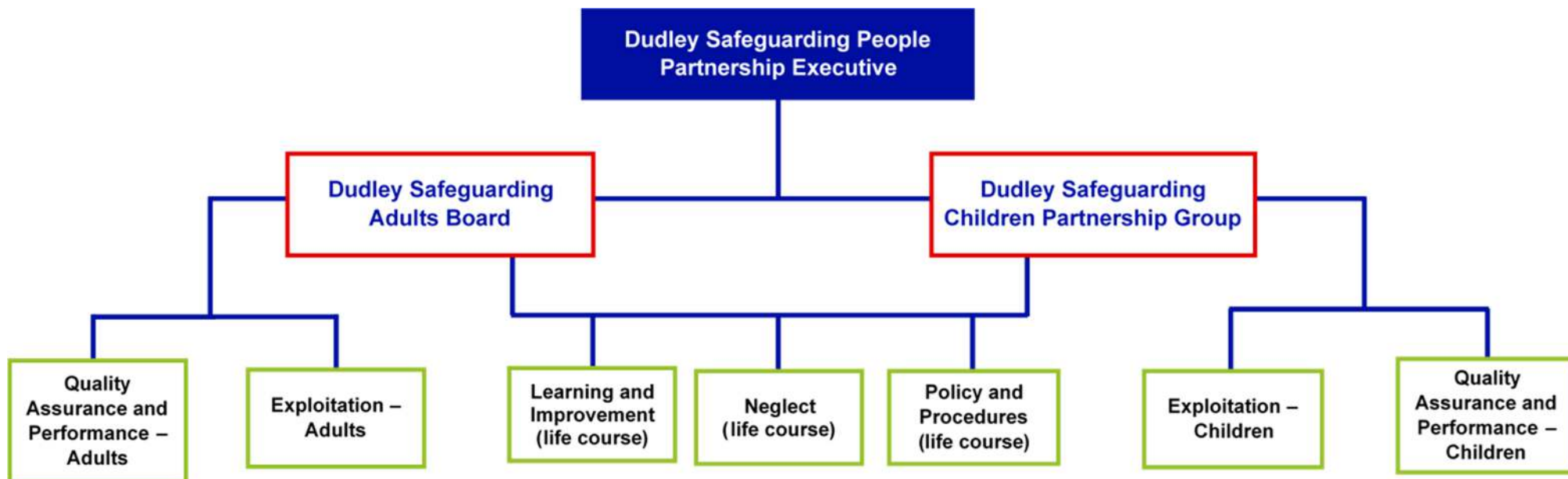
A's son D was also contacted by Dudley Disability Services and offered a needs assessment

# Further achievements

The Liberty Protection Safeguards (LPS) are expected to replace Deprivation of Liberty Safeguards (DoLS) in April or October 2023. While awaiting an implementation date from the Government preparation continues internally, with wider partners in Dudley, the Black Country and Regionally. With support from partners the Safeguarding Adults Board has developed an E Learning LPS Awareness course which is available to professionals and citizens of Dudley which is helping to raise awareness and support preparation.



The Covid 19 Pandemic has presented challenges and impacted how services were delivered but new ways of working were developed, and increased use of technology has ensured that safeguarding services continued to be responsive to need.



## Key Achievements

Dudley Safeguarding Adults Board (DSAB) continues to provide assurance and supports the multi-agency partnerships to work together on agreed priorities through the subgroups and with oversight by the Executive comprising of senior leaders in from organisations.



The rise and fall of the pandemic throughout the year impacted on the training offer but we still managed to deliver over 40 virtual training events and offered 789 adult and life course places.

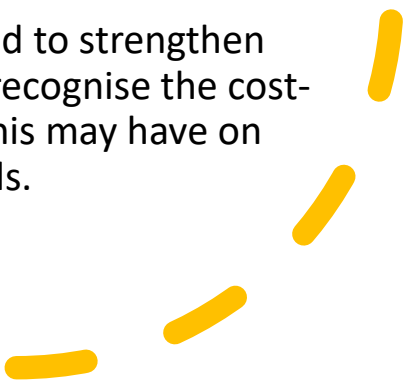


There was increased referrals for Safeguarding Adult Review (SAR) enabling partners to:

- Learn from past experiences and the specific event examined.
- Improve future practice and outcomes by acting on learning identified by the review.
- Improve multi-agency working and compliance with any other multi-agency or single agency procedures, including regulated care services.



## Potential Risks

- Increased safeguarding referrals are encouraged to ensure citizens are protected but rising demand increases resource pressure within safeguarding.
  - Legislative change such as LPS requires appropriately qualified staff to meet our statutory duties. If the Local authority were unable to train or secure an appropriate number of professionally qualified people citizens would be at risk of being illegally detained within the community, nursing and residential settings. This would place the Local authority at risk of legal challenge as this may lead to citizen's Human Rights being breached.
  - LPS will also impact on young people 16+ which is a major change, and it is imperative that Children's services and stakeholders are involved in the preparation and planning.
  - Over the next 12 months we recognise that we need to strengthen our multi – agency response to self-neglect. We also recognise the cost-of-living crisis and the immeasurable consequences this may have on people, particularly those with care and support needs.
- 

## Suggested topics for future scrutiny.

The DSPP priorities for 2022-24 are:

### **Neglect**

### **Exploitation**

### **Adopting a 'Think Family' approach**

- Work has begun on a Neglect strategy for adults. It is recognised that acts of omission and neglect are not necessarily focused on and the need to have a dedicated resource has been agreed by the Neglect subgroup.
- Self-neglect cases are on the rise in Dudley and as such the Partnership have commissioned a thematic review into five self-neglect cases. It is hoped that this will provide not only learning but a toolkit to assist practitioners.
- The suicide rate in Dudley has increased since 2015-2017. From the latest data available for 2018-20, there were 11.3 suicides per 100,000 population (or 94 persons) which is the highest rate recorded since records began in 2001-03. Although this is not significantly different to the West Midlands (10.5 per 100,000) or England (10.4 per 100,000). This is a growing concern and suicide awareness, and support will need to be a focus of both learning and development and service offer going forwards

Source: Office for Health Improvement & Disparities. Public Health Profiles. [accessed 16/05/22]  
<https://fingertips.phe.org.uk> © Crown copyright 2022