

**better** *together*

# Dudley and Walsall Mental Health Partnership NHS Trust

Shadow Health and Well Being Board

January 21<sup>st</sup> 2013



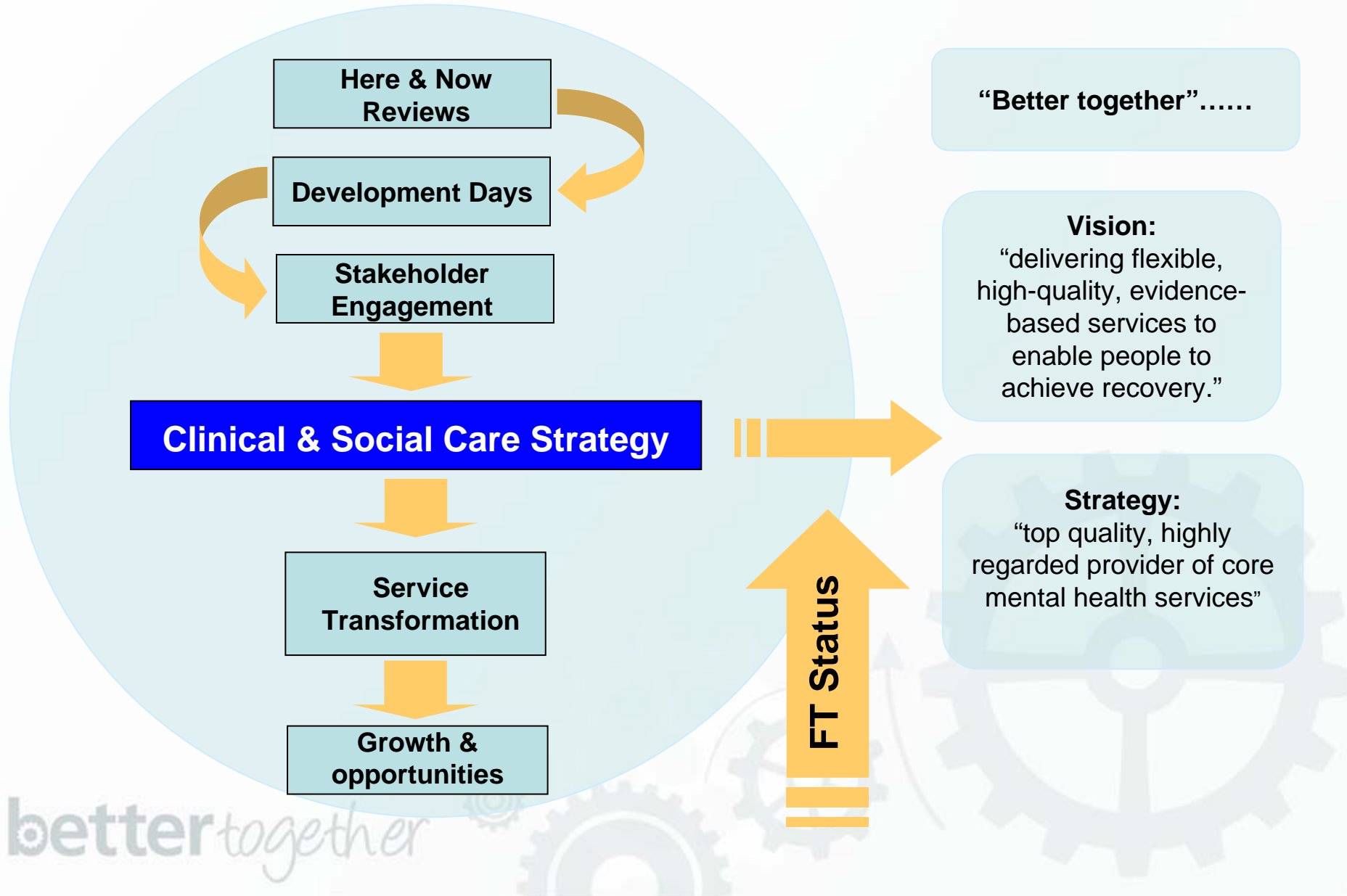
# What do we do?

We provide a range of mental health services across Dudley and Walsall (and beyond) including:

- Community mental health services for children, adults & older people.
- Inpatient services for adults and older people
- Primary Care (including IAPT) services
- Mental Health Social Care Services (via council partnerships)
- Psychological Therapies
- Substance Misuse Services



# Delivering our Vision



# Our Recent Achievements

- The launch of a new and improved service model within Adult Community Services across Dudley and Walsall.
- Agreed priorities for quality improvements
- Improvements in survey results from both staff and service users
- Foundation Trust Application progressed to Monitor Stage (Final Stage)
- Launched membership recruitment campaign and recruited over 6,000 members
- Elected a Council of Governors

# Our Recent Achievements contd...

- Achieved financial and performance targets
- Invested £1,360k in capital improvements
- Enhanced capability to provide real time performance reports
- Investment in leadership development
- Received Occupational Health accreditation - SEQOHS
- Launched a dedicated Service Experience Desk
- Launched Quality Strategy and Quality Impact Assessments



# Looking forward

## Our environment

- Emphasis on quality and performance
- Significant financial challenges
- Personalization and Personal Budgets
- Provider competition and Any Qualified Provider
- 'Payment by Results' (PbR) tariffs for mental health
- New roles for regulators
- Rising demand for MH services



# Looking forward

## Our stakeholders and partners

- 'HealthWatch' and Health and Wellbeing Boards
- National Commissioning Board and Regional Structures
- Clinical Commissioning Groups
- Health Education through Local Education and Training Councils and Local Education and Training Boards
- Mental Health Institute





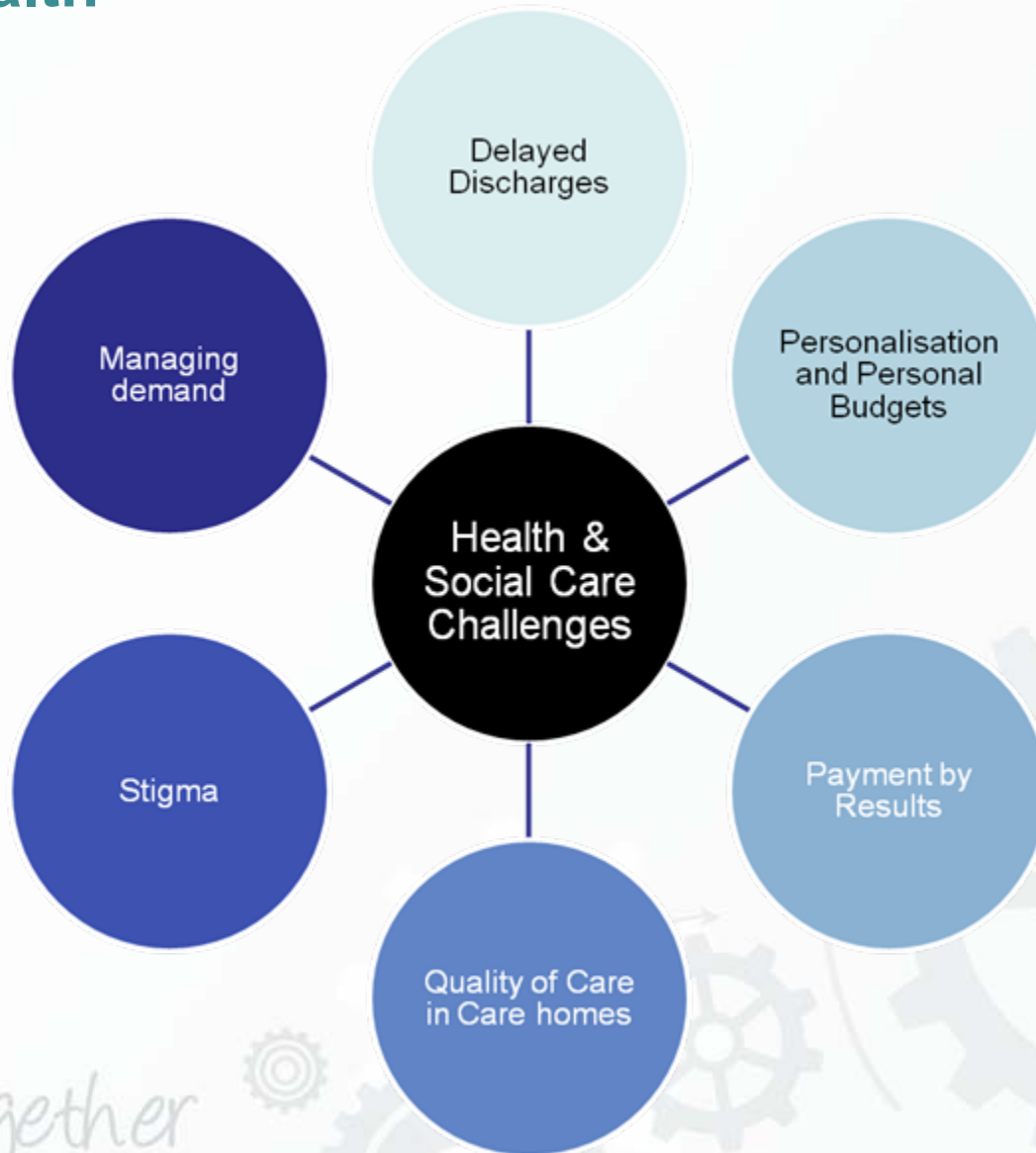
# Looking forward

## Our focus

- Service transformation
  - Continue with year 2 implementation
  - Begin year 3 planning
- Foundation Trust
  - Achieve Foundation Trust Status
  - Celebrate first 100 days
  - Invest, seek new opportunities and grow
  - Drive Quality through customer services
  - Extend engagement of our membership
- Further engagement with Clinical Commissioning Groups



# Specific Challenges for Providers of Mental Health



# Thank You

**better** *together*

