

Dudley Safeguarding Children Board

'Working Together to Keep Children & Young People Safe'



Dudley Safeguarding Children Board's ANNUAL REPORT

2009-10

&
Business Plan
2010-12

Every Child Matters

Staying Safe Matters to Every Child



Foreword

“This increase in demand and higher expectations of performance is not being matched by the provision of additional resources...if these reductions fall on child protection and safeguarding budgets within the various organisations, the capacity of the relevant services to keep children safe will inevitably be diminished....Those who work in safeguarding are acutely conscious of this funding uncertainty and understandably anxious about it...but for them the lack of media and subsequent public recognition that the cases they deal with are rarely clear cut or risk free is demoralising”

Sir Roger Singleton, Chief Advisor on the Safety of Children (First Annual Report to Parliament, March 2010)

It seems to me that almost everyday I turn on the news, listen to the radio or read a newspaper there is some level of media coverage about a child abuse case or another serious case review, and often in the context of blaming professionals for not protecting a child. Indeed, there is a sense in which serious case reviews have become the touchstone of the competency of child protection agencies in that local area...the window on the outside world. Since the outcry in response to the Peter Connelly ('Baby P'), we have seen a significant increase in referrals to social care, both at a national and local level. Some of this may relate to increased professional anxiety and risk aversion, but undoubtedly it has coincided with an increased awareness of safeguarding and the impact of a recession. Alongside this, we have been screening an average of over 300 domestic abuse cases involving children every month. It can also feel overwhelming when we are faced by more and more guidance and another new agenda for our Local Safeguarding Children Board to respond to. This can feel like another hand waving amongst a crowd of hands all competing for limited resources and to become a priority for safeguarding.

Yet there is always something to celebrate and be proud of in terms of our achievements. We must always strive to achieve the right balance between recognising good practice and seeking to improve as a result of learning lessons from so-called 'near misses'. On a daily basis in our borough, professionals and volunteers make a valuable contribution to keeping children and young people safe from harm; and yet everyday, there are children who are living with risk of significant harm, being physically harmed or emotionally neglected, being bullied by their peers, or being groomed by an adult with the aim of exploiting or abusing them. The task of identifying and protecting them, the complexity often involved with parental issues within the family, the need to recruit and retain good quality social workers, police officers, health professionals and foster carers, and the challenge of creating the right environment where practitioners and their managers can confidently share information and work together to effectively safeguard and promote children's well-being can and should not be underestimated. These are challenges.

Despite the greater priority afforded to the safeguarding of children, there continues to be a small number of deeply worrying cases where the professionals have appeared to have 'failed' children. Alongside the increased scrutiny, there is an ever-increasing concern amongst local partnership agencies that insufficient funds are available to meet both current and future demands for protective services. It is absolutely right that the public should expect consistently high standards from a range of professionals involved when a child is thought to be suffering significant harm. Every case of a child suffering abuse or neglect where agency shortcomings are identified highlights the need for improvement. Public interest and concern has not abated over the last twelve months even since the death of Peter Connelly, especially in the wake of deeply disturbing cases involving children such as those in Salford – the tragic death of Demi Leigh Mahon; in Doncaster – the grave assaults perpetrated by two boys on others in Edlington; and in Sheffield and Lincolnshire – the repeated rape of two daughters by their father. There continues to be national and professional debates about child protection, questions about some of Lord Laming's recommendations, concern about a lack of social workers and health visitors or investment in these professions, disagreement about whether full overview reports from serious case review should be published and mixed views about the effectiveness of Independent Chairs. In the midst of this, the Board will continue to promote co-operation between key partners in order to meet the challenges that agencies face in safeguarding children. This report provides an overview of the key achievements, challenges and priorities for action.

Graham Tilby, Divisional Manager for Safeguarding & Review

Contents

Executive Summary

- Introduction
- Key achievements
- Progress against key priorities for 2009-10
- Key challenges and priorities for 2010-11

Governance and accountability arrangements

- Role, function and structure of the Board and sub-committees
- Chairing arrangements
- Relationship with the Children's Trust Board
- Membership and attendance
- Role of Lead Member and Lay Members
- Budget

Monitoring, evaluation quality assurance activity

- Child Protection Data
- Performance information
- Summary of quality assurance activity during 2009-10 and audit priorities for 2010-11
- Joint Strategic Needs Assessment

Serious Case Reviews

Child Death Overview Panel

- Child death review arrangements
- Lessons learnt and actions taken

Reports from Sub-Committees

- Training & Development
- Policy, Procedures & Practice
- Safer Recruitment & Employment
- Serious Case Reviews

Reports from Panels

- Young People at Risk of Sexual Exploitation (YPSE)
- Child Death Review Panel

Reports from Task Groups

- Emotional Abuse & Neglect
- E-Safety
- Domestic Abuse
- Anti-Bullying

Reports from Safeguarding Forums

- Child Protection Co-ordinators (Education) and 14+ Safeguarding Forums
- Health Safeguarding Forum
- Local Forum (Police & Social Care)
- Sport, Recreation & Physical Activity Safeguarding Forum

Appendices

APPENDIX 1: Core Messages & Schedule of Activities (Communication & Public Engagement)

APPENDIX 2: Summary of Child Protection Data

APPENDIX 3: Single Agency Priorities

APPENDIX 3: LSCB Effectiveness

APPENDIX 5: DSCB Performance Data Set

APPENDIX 6: DSCB Structure Chart

Executive Summary

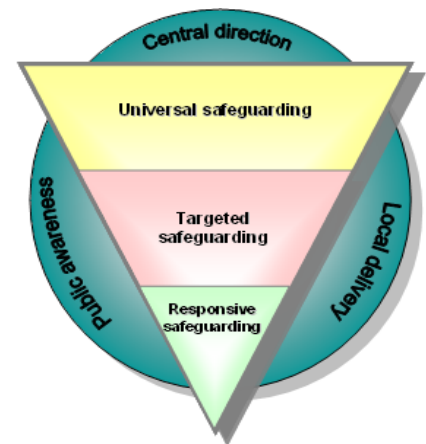
Dudley Safeguarding Children Board is committed to engaging and empowering staff working with children and young people to recognise, respond and act to safeguard children's & young people's well-being

Introduction

Welcome to Dudley Safeguarding Children Board's Annual Report 2009-10. The Board is the key statutory mechanism for agreeing how relevant organisations will co-operate and work together to safeguard and promote the welfare of children and young people in Dudley, and for ensuring the effectiveness of what they do.

Dudley Safeguarding Children Board is committed to contributing towards improved outcomes for *all* children and young people – we believe that being safe matters to every child and we must take responsibility as adults to ensure that children and young people are safeguarded in order that they can be healthy, enjoy and achieve, make a positive contribution and achieve economic well-being. The Board will work to ensure that:

- *All* children and young people have safe environments to help promote their welfare and well-being
- Action is targeted at *vulnerable groups* such as disabled, children in care; *and*
- *Responses* to children who have been harmed to minimise lifelong impact are co-ordinated and effective



Dudley Safeguarding Children Board has 4 strategic objectives:

- *promoting an understanding that safeguarding children & young people is everyone's and every organisation's responsibility;*
- *improving children & young people's understanding of risks to their own safety and how they can safeguard themselves;*
- *raising public awareness of potential risks to children's safety and what to do if they are worried about a child being abused; and*
- *developing safer services and employment practices across organisations who work or come into contact with children or young people.*

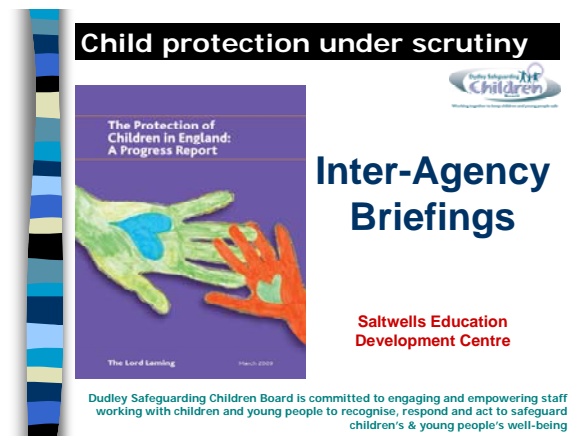
Achievements 2009-10

Some of our key achievements in Dudley include:

- Safeguarding 268 children & young people through an inter-agency Child Protection Plan and 453 children who were subject to a Section 47 investigation;
- 1883 people who work with children & young people have attended safeguarding training (measured by attendance at Level 1-3 courses), which amounts to a 4% increase in people attending child protection compared to the previous year. This does not take account of single-agency training;



- The Board delivered two series of inter-agency briefings to a total of 1093 people, the first in respect of 'Baby P' (Peter Connelly) & Lord Laming's Review; the second jointly with Dudley Safeguarding Vulnerable Adults Board concerning the Vetting & Barring Scheme;
- The Black Country Sports Partnership has achieved the NSPPC Advanced Award for Safeguarding, strongly supported by Dudley's Principal Sports & Physical Activities Manager;
- Local officers/managers are involved in national groups such as Vetting & Barring (Independent Safeguarding Authority) and LSCB E-Safety Experts Panel (Becta);
- The Board has successfully developed an inter-agency Young People at risk of Sexual Exploitation (YPSE) Panel, supported by Dudley Street Teams who have worked directly with 37 young people at risk of exploitation, as well as delivering their Solomon education programme to 957 young people and their awareness training to 359 professionals;
- External evaluations and inspections of early years and schools settings in respect of their safeguarding arrangements have been good;
- During the last 12 months, 1241 people have completed one of the e-learning modules provided by Virtual College, compared to just 31 the previous year. This represents an overall completion rate of 70%.
- The Board has introduced a Level 2 Refresher training course and developed/delivered a number of new Level 3 courses such as Recording Skills, Management of Allegations and Self-Harm.
- Contributed to the development of regional cyberbullying survey for young people as part of anti-bullying work – over 2,000 young people took part in an online survey, the results of which have been disseminated



- Young People's safeguarding Board (S4Kidz) established to work alongside the Board
- Secured two-year funding for a Safeguarding Schools Trainer to support the education sector in meeting their Section 175 responsibilities

- Secured additional funding from the Children's Trust to pilot a 'young runaways' service in collaboration with the Children's Society alongside the continued development of Dudley Street Teams and responses to young people at risk of sexual exploitation
- The Primary Care Trust have improved the level and quality of child protection to GPs and their practices, in collaboration with Barnardos and Stop it Now! Black Country & Birmingham

- Piloted the Barnardos Screening Tool in respect of risk assessments for children who experience domestic abuse through the DART (Domestic Abuse Response Team) – the interim evaluation has been positive in terms of improved outcomes
- Revised DSCB Communication & Engagement Strategy 2009-12 to include core messages for stakeholders (see Appendix 1)
- E-safety work received an award for 'use of new technologies' at the first-ever Regional Safeguarding Awards, and our work with child protection training with local Imams was also highly commended. Other nominations were safeguarding in sport, public engagement and young people's sexual exploitation
- The Board worked in collaboration with Dudley Safeguarding Vulnerable Adults Board and the Safe & Sound (Community Safety) Partnership, supported by Dudley Council's Marketing & Communications Team to develop and deliver a public awareness campaign about safeguarding children and vulnerable adults
- Received generally positive feedback via schools survey with regards to the support they receive in respect of safeguarding advice and training
- Completed child protection training for local Imams and women's groups with local Mosques.



Progress against key priorities 2009-10

For 2009-10, the Board agreed 10 key priorities for the next three years:

Improve inter-agency child protection arrangements

Specifically we have:

- *Supported the implementation of findings from Laming Review and self-assessment activity, included securing additional funding for social care services*

Improve inter-agency responses to emotional abuse & neglect

Specifically we have:

- *Researched the introduction of a range of assessment tools & models in respect of neglect*

Improve inter-agency arrangements in respect of children who go missing from care or home

Specifically we have:

- *Supported the gathering and analysis of data*
- *Commissioned service in collaboration with Children's Society for young runaways*



Improve inter-agency responses and reviews to child deaths



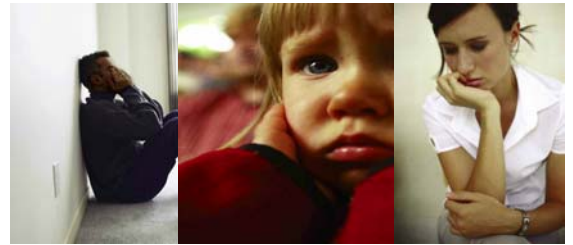
Specifically we have:

- Improved rapid response arrangements in response to children who die unexpectedly
- Reviewed 16 children's deaths

Improve inter-agency arrangements in respect of domestic abuse

Specifically we have:

- Contributed to improved risk assessment processes in respect of children & young people who experience domestic abuse through establishment of the DART and use of the Barnardos Screening Tool



Enhance quality assurance capacity in respect of child protection and looked after children

Specifically we have:

- Secured additional funding to strengthen dedicated quality assurance function across health and social care

Improve inter-agency arrangements in respect of sexual exploitation and abuse

Specifically we have:

- Enhanced services provided by Dudley Street Teams services
- Reviewed YPSE arrangements in respect of young people at risk of sexual exploitation
- Reviewed e-safety strategy in respect of safeguarding & new technologies



Improve anti-bullying responses, notably in respect of vulnerable groups of children

Specifically we have:

- Revised Anti-Bullying Policy to take account of new national guidance and bullying in community settings
- Supported Cyberbullying survey for young people
- Secured funding from Community Partnership for Anti-Bullying Co-ordinator

Improve safer recruitment & employment practices

Specifically we have:

- Commenced preparations for the implementation of Vetting & Barring Scheme and conducted series of multi-agency briefings in partnership with Dudley Safeguarding Vulnerable Adults Board
- Piloted modular course in respect of handling allegations against staff as follow-up to safer Recruitment training
- Revised Safer Working Practices guidance

Improve governance & accountability arrangements

Specifically we have:

- *Clarified protocol arrangements with the Children's Trust, notably in respect of scrutiny and commissioning*
- *Employed the LSCB Effectiveness tool to self-assess ourselves and incorporated the key findings into improvement activity (see Appendix 3 for summary)*

In addition to the above, we have:

- Supported a public education campaign in respect of safeguarding children & vulnerable adults and reviewed our Communication & Public Education Strategy
- Developed joint training with Dudley Safeguarding Vulnerable Adults Board
- Introduced some elements of the SCIE model for learning from 'near misses' within internal management review processes

Key Challenges & Priorities for 2010-11

Key Challenges include:

- The environment in which professionals are working to safeguard children has changed – there has been an increased demand for those services most concerned with child protection, expectations of professionals are also increasing, and available resources are likely to decrease
- Some agencies are operating with high caseloads, notably amongst social workers and health visitors
- The increased demand on front-line services such as social care and police, has not been matched by an equitable increase in resources and has resulted in higher thresholds to access such services
- Despite progress in establishing the DART (Domestic Abuse Response Team) in dealing on a day-to-day basis with incidents of domestic abuse involving children, these arrangements remain extremely fragile in terms of resources
- There has been a higher demand for child protection training due to impact of increased awareness, new duties and requirements of inspectorates such as Ofsted
- There are additional budget pressures in part as a result of new requirements for independent chairs and authors and in respect of new guidance and performance indicators
- There are some performance issues in relation to specific measures such as timeliness of Initial Child Protection Conferences
- There is evidence of increasing complexity of assessments due to parental factors such as mental health and substance misuse
- There is evidence of increasing complexity of court work such as care proceedings using the Public Law Outline
- There remain some capacity issues in terms of the Board's ability to learn from 'near misses' and good practice through quality audit and assurance activity
- The need for translating new national guidance in a meaningful and non burdensome way for practitioners and quality assuring practice against such procedures
- The lack of ICT compatibility across key agencies & systems
- The need to improve professional & agency understanding and agreement on thresholds, taking into account the impact of increased demand on services
- The need to improve early intervention and prevention services and the use of Common Assessment & Team around the Child (TAC) to deliver better outcomes for vulnerable children in a more timely manner
- The impact of the recession and public spending cuts, notably on the voluntary sector and sources of statutory funding

Key Priorities for 2010-11:

The Board has 'refreshed' its 10 priorities to 6 key priorities, which it will focus its resources on during 2010-11, alongside its core statutory functions outlined later in this report. The numbering of priorities below does not indicate ranking in terms of importance. DSCB priorities for 2010-11 are:

PRIORITY 1

Consolidate inter-agency responses to domestic abuse where children are living within the household

Specifically we will aim to:

- Implement the findings from the evaluation of DART
- Contribute to a service improvement review in respect of domestic abuse

PRIORITY 2

Improve early responses and assessment & intervention in respect of children suffering from emotional abuse & neglect, particularly where this relates to parental substance misuse, mental health or learning disability

Specifically we will aim to:

- Implement new models of assessment and intervention in respect of neglect
- Review and implement strategy for improving responses to neglect in collaboration with the Children's Trust

PRIORITY 3

Improve service provision and inter-agency responses for a range of vulnerable children including those who go missing from home or care, those at risk of sexual exploitation, internal trafficking and children living with private fostering arrangements

Specifically we will aim to:

- Evaluate Dudley Circles Young Runways service (12 month pilot)
- Implement 'children missing' action plan to include agreeing new procedures for responding to children who go missing from home and contributing to review of regional protocol for responding to children who go missing from care
- Continue to develop YPSE Panel arrangements and services to young people at risk of sexual exploitation
- Implement key findings from the annual reports on private fostering

PRIORITY 4

Improve safety of children & young people who are vulnerable to exploitation and bullying, including through the use of new technologies, such as cyberbullying

Specifically we will aim to:

- Implement revised e-safety strategy
- Contribute to new anti-bullying policy for the borough and actions arising from the anti-bullying action plan

PRIORITY 5

Enhance training and development activity to include a review of safeguarding training strategy, implementation of actions arising from communication and public education strategy, and continued development of 'a learning from audit' approach

Specifically we will aim to:

- Revise Training & Development Strategy in the light of new *Working Together* and local needs analysis
- Implement revised Communication & Public Engagement Strategy
- Implement work programme for quality assurance and performance

PRIORITY 6

Secure improved effectiveness of the Board in terms of safeguarding and undertake a programme of Section 11 and Section 175 audits to support agencies in fulfilling their duty to safeguard

Specifically we will aim to:

- Implement improvement identified from LSCB self-assessment activities
- Develop and implement arrangements for peer review in respect of duties to safeguard

In addition to the above key priorities, other areas of development are outlined within the full report, which includes priorities for each of the sub-committees and panels. During 2010-11, the Board will also contribute to a number of other areas of activity such as:

- Development of a protocol between substance misuse services and safeguarding in respect of adults who misuse alcohol and drugs;
- Work with Counter Terrorist Unit in respect of preventing violent extremism and the development of the 'Channel Panel';
- Work with Stop it Now! Black Country & Birmingham (Barnardos) in respect of a prevention strategy for child sexual abuse, public education as part of roll-out of 'Disclosure pilot' (Sex Offender Review) and establishment of Inform and Inform Plus group-work programmes for internet safety (in collaboration with the Lucy Faithful Foundation);
- Implementation of the key actions arising from the LADO (Local Authority Designated Officer) Annual Report in respect of the management of allegations against people who work with children
- Work with Safe & Sound Partnership in respect of safeguarding children and young people who may be affected by gang activity
- Work with Dudley Safeguarding Vulnerable Adults Board in respect of forced marriage and female genital mutilation

Key Contacts for DSCB

If you would like to know more about the work of Dudley Safeguarding Children Board email Safeguard&Review.Cs@dudley.gov.uk

If you require specific advice or guidance in respect of safeguarding issue affecting your agency, please contact:

Early Years	kim.sharratt@dudley.gov.uk
Primary Care	pauline.owens@dudley.nhs.uk or alison.wills@dudley.nhs.uk
Education (Schools & Colleges)	funbir.jaspal@dudley.gov.uk
Youth Services	suzanna.harkness@dudley.gov.uk
Sport & Physical Activity	rachael.doyle@dudley.gov.uk
Police	mark.wilson@west-mildands.pnn.police.uk
Social Care	jackie.jennings@dudley.gov.uk
Dudley Group of Hospitals	Carol.Weston@dgoh.nhs.uk or Sally.Abbatiello-Burns@dgoh.nhs.uk
Dudley & Walsall Mental Health Trust	Maggie.MacDonald@dwmh.nhs.uk

Governance & accountability arrangements

Role, function and structure of the Board and sub-committees

Dudley Safeguarding Children Board (DSCB) is the key statutory mechanism for agreeing how the relevant organisations in our borough will co-operate to safeguard and promote the welfare of children, and for ensuring the effectiveness of what they do.

The scope of DSCB includes safeguarding and promoting the welfare of children in three broad areas:



- Activity that affects **all** children and aims to identify and prevent maltreatment, or impairment of health or development, and ensure children are growing up in circumstances consistent with safe and effective care
- Proactive work that aims to target particular vulnerable groups of children and develop and evaluate thresholds and procedures for children identified as 'in need'; *and*
- Responsive work to protect children who are suffering, or are likely to suffer significant harm, including children abused and neglected within families, children abused by strangers, by other young people or through sexual exploitation.

The core functions of DSCB include:

- *Developing thresholds, policies, procedures and protocols* for safeguarding and promoting the welfare of children and the action to be taken where there are concerns about a child's safety or welfare, including thresholds for intervention; S47 enquiries, investigations concerning persons working with children & young people and key issues of concern such as children abused through sexual exploitation, female genital mutilation, forced marriage, children missing from home or care or children who may have been trafficked, and the safety and welfare of children who are privately fostered
- *Agreeing arrangements for single-agency and inter-agency training* on safeguarding and its monitoring and evaluation to ensure its quality and effectiveness
- *Developing and implementing strategies for communicating and raising awareness of safeguarding* amongst children, young people and families and the wider community about key information concerning safeguarding and what to do if they are worried about a child being abused
- *Monitoring and evaluation* of individual practice, organisational effectiveness and inter-agency working in safeguarding children & young people
- *Participating in planning and commissioning* through contribution to the Children & Young People's Plan and in discussion with Dudley Children's Trust
- *Undertaking child death and serious case reviews* in accordance with regulations and guidance

During 2009-10, DSCB commenced a process of rationalising its sub-structure to improve its capacity to be effective taking into account the resources available to deliver its statutory functions and key priorities.

The key sub-committees are:

- *Policies, Procedures & Practice* – key responsibilities include development of inter-agency, and oversight of single-agency, safeguarding children procedures, and learning from single or joint agency quality assurance and audit practices
- *Training & Development* – key responsibilities include agreeing and implementing an inter-agency Training & Development Strategy, oversight of the DSCB training programme, and contribution to communication, awareness-raising and public engagement activities including S4K ('Young People's Safeguarding Board')
- *Child Death Review Panel and Serious Case Review* – operated as back-to-back meetings, the former has key responsibility for ensuring that the Board is compliant with guidance in respect of rapid responses to *unexpected* child death and reviews of *all* children's deaths; the latter oversees arrangements for undertaking SCR's in accordance with '*Working Together*' guidance.
- *Safer Recruitment & Employment* – key strands of work include co-ordinating inter-agency safer recruitment practices, developing guidance for safer working practices and oversight of the arrangements for handling concerns or allegations against people who work with children.

The main Board is supported by a DSCB (Executive) Steering Group, established to take a lead role in ensuring effective child protection arrangements and the co-ordination of improvement activity across key partner agencies, and strengthening governance and accountability and performance management arrangements.

In addition, there are a number of Task Groups, which in general, are time-limited and aligned to the key priorities established by DSCB.

The Board also operates a Young People at risk of Sexual Exploitation (YPSE) Panel, which meets on a monthly basis to discuss individual young people who may be at risk of being sexually exploited or internally trafficked.



During 2010-11, DSCB will be developing a 'Vulnerable Children's' Task Group to encompass a number of streams of activity where concerns in respect of children or young people are often overlapping and interwoven. The group will have an oversight of inter-agency responses to issues such as sexual exploitation, 'young runaways', child trafficking and private fostering.

Chairing arrangements

The Board is currently chaired by the Assistant Director for Children & Families, within the Directorate of Children's Services in the local authority. The Vice-Chair is due for re-election during 2010-11, alongside discussions concerning the commissioning of an Independent Chair. The work of the Board is supported by the Safeguarding & Review Unit, which will no longer be part of Children & Families after the 1st October 2010.

Relationship with the Children's Trust Board

Whilst DSCB responsibilities aim to complement those of the Children's Trust Board, namely in promoting co-operation to improve the well-being of children & young people across all five *Every Child Matters* outcomes, it has a narrower focus on safeguarding and promoting welfare.

During 2009-10, the Board agreed a protocol for its relationship with Dudley Children's Trust Executive Board, in accordance with the guidance outlined within *Working Together*. This can be found at <http://safeguardingchildren.dudley.gov.uk>

Membership and attendance

The main Board has representatives from the following partner agencies:

- Directorate of Children's Services (including Children's Social Care, Extended Services/Early Years, Education/Inclusion, Youth Offending Services, Connexions)
- Primary Care Trust (Commissioning, Provider Services)
- Dudley Group of Hospitals
- Dudley & Walsall Mental Health Trust
- West Midlands Police (Public Protection Unit)
- National Probation Service
- Directorate of Urban Environment (Sport & Physical Activity)
- CAFCASS
- Directorate of Law & Property
- Community Safety Team (Domestic Abuse, Substance & Alcohol Misuse)
- Schools & FE College
- Dudley Council for Voluntary Service
- Directorate of Adults, Community & Housing Services
- West Midlands Fire Service

The Board plans to introduce more formal monitoring of attendance during 2010-11.

Role of Lead Member and Lay Members



The Lead Member for Children's Services (Dudley MBC) attends the main Board as a 'participant observer'.

DSCB was one of the first Boards to appoint Lay Advisors in 2007. Two Lay Advisors were invited to join the main Board and two 'shadow' Lay Advisors were engaged in some of the sub-structure, notably the e-safety strategy group. On the whole, this has been a successful initiative.

The Board plans to make further appointments during 2010-11.

Budget

Income 2009/20

Core Budget

Directorate of Children's Service (DCS)	45,600
Directorate of Adults, Community & Housing Services (DACHS)	17,510
Sure Start General Grant (Early Years)	18,040
Dudley Primary Care Trust (PCT)	37,400
Contribution to YPSE (one-off) – Dudley PCT	5,000
<i>Contribution to Quality Assurance (one-off) – Dudley PCT</i>	<i>20,000*</i>

Training Budget

Dudley Group of Hospitals NHS Trust	2,000
FE Colleges	1,000
West Midlands Police	3,000
Probation Service	3,000
CAFCASS	559
Black Country Connexions	1,000
Missed Courses	4,745
External charges	4,100

Total Income 142,954**

Expenditure 2009/10

Core Expenditure

Salaries	128,180
Serious Case Reviews	0
Travel Expenses	3,200
Stop it Now! Black Country & Birmingham	15,000
Virtual College Membership	3,500
Dudley Street Teams	10,000
West Midlands Police (Joint Training)	5,175

Training Costs

Trainers & materials	8,000
Room hire & catering	27,580
Graphics & printing charges	10,500

Total Expenditure 211,135

Surplus carried forward from 2008/09 41,700

Deficit for Financial Year 26,481

*Not included within figures

** Total income does not include grant for Child Death Reviews

Budget 2010/11

DSCB is starting the new financial year with a projected overspend of around 25k, assuming no additional costs such as a Serious Case Review, which on average amount to around 10k. The most significant costs are associated with catering for training courses, which the Board hopes to cut significantly over a two-year period through re-locating training to alternative venues.

Projected income (training) is expected to rise marginally during 2010/11, but is likely to be offset by the budget pressures outlined below.

The Board has also received 20k from the Children’s Trust to ‘pilot’ a new project for ‘young runaways’ and 40k per year for a 2-year fixed-term Schools safeguarding Trainer from the Combined DSG Schools funding. Funding has also been approved by Crime Reduction Implementation Group (CRIG) for the funding of an administrator to support the DART initiative (for 12 months non-recurring).

There are a number of budget pressures for this financial year, such as:

Dudley Street Team (YPSE) – part of Comic Relief match-funding	10,000*
Additional sessional workers	10,000
DART Administrator	25,000
Serious Case Reviews	10,000**
Independent Chair	30,000**

Looking further ahead to 2011/12, there will be additional budget pressures due to several potential pick-up costs associated with short-term or time-limited funding, which will include ‘Young Runaways’ and Child Death Review, and other capacity issues such as training, dedicated business and HR support, and a safeguarding specialist post to support the voluntary & community sector.

During 2010-11, further financial profiling will take place to fully scope the costs of an LSCB in terms of it’s infrastructure and costs associated with carrying out its statutory and core functions. This will form part of the Strategic Needs Assessment in order to contribute to the revision of the Children & Young People’s Plan and advice to Dudley Children’s Trust of the level of service provision required to deliver staying safe outcomes for children & young people.

*The Board has underwritten these costs as part of a Service Level Agreement with Walsall Street Teams

**Approximately 20k has been allocated from Dudley MBC as part of its allocation of additional funding to meet the costs of implementing the outcomes from Lord Laming's Review.

Monitoring, evaluation quality assurance activity

Child Protection Data

In order to understand trends in respect of child protection data, it is often best to look at 'conversion rates' in terms of pathways through the system as opposed to actual numbers, and where possible make comparisons to West Midlands, national or statistical neighbour group averages.

Children in need and child protection trends tend to be influenced by a multitude of factors such as:

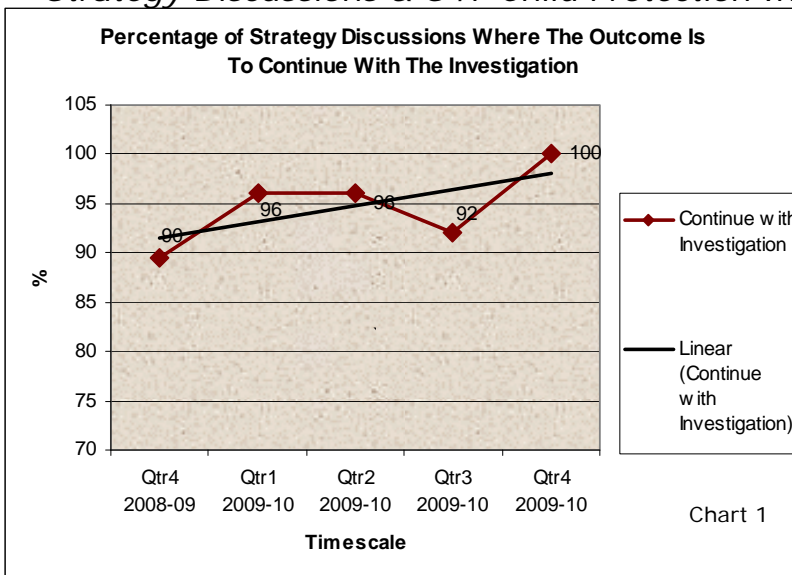
- Level of need within families and communities, impacted by poverty and recession
- Level of awareness/anxiety amongst public and professional communities, impacted by media, publicity and training
- Level of thresholds being applied by key statutory agencies such as social care and the police
- Level of resources targeted at early prevention, in reducing the need for crises-based interventions

Contacts & referrals with Children's Social Care

During 2009-10, a total of 11,745 'contacts' were made with Children's Social Care, which amounts to around 225 contacts per week. Of these, 2698 (23%) related to concerns with regards to domestic abuse (as a result of 392 notifications from the police) and 931 (8%) were in respect of child protection concerns. The most significant source of 'contact' was West Midlands Police (34%), although this is impacted heavily by the new arrangements for domestic abuse notifications (now via the DART). Other significant groups were 'friends & relatives' (13.5%), Education (11.4%) and Health (8.3%).

Of the 11,745 'contacts', 6271 (53%) became deemed to be 'referrals' to social care, of which 27.4% required further assessment (initial or core) and 5.4% progressed to a S47 child protection investigation.

Strategy Discussions & S47 Child Protection Investigations



In 2008/09 there were 574 (363 SD's) children that were the subject of a Strategy Discussion, whilst in 2009/10 the number recorded had fallen to 494 (337 SD's), although this figure is considered to be under-recorded given the rise in activity at later phases of child protection activity, for example an 18% increase in new 'child protection plans.'

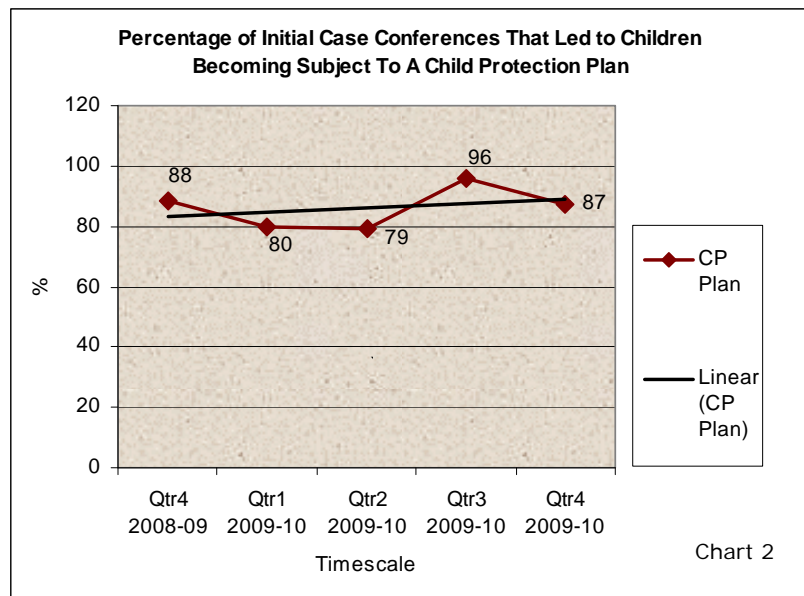
Chart 1 shows the % of Strategy Discussions where the outcome was to continue with the investigation has

remained above 90% for the past 15 months, and reached 100% by Qtr 4.

In 2008/09 there were 524 (332 S.47's) children that were the subject of a S.47 investigation, whilst in 2009/10 the number had fallen to 453 (309 S.47's). Again this does not reflect the true picture as child protection activity has in fact increased. Approximately 70% of all S47 investigations proceeded to an Initial Child Protection Conference.

Initial & Review Child Protection Conferences

The numbers of Initial and Review Case Conferences increased significantly in quarter 1 2009/10 and overall numbers have increased for 2009/10 compared with 2008/09. The proportion of Initial Case Conferences that have led to children being the subject of a child protection plan has altered little, from 88% in Quarter 4 2008/9 to 87% in Quarter 4 2009/10 (see Chart 2).

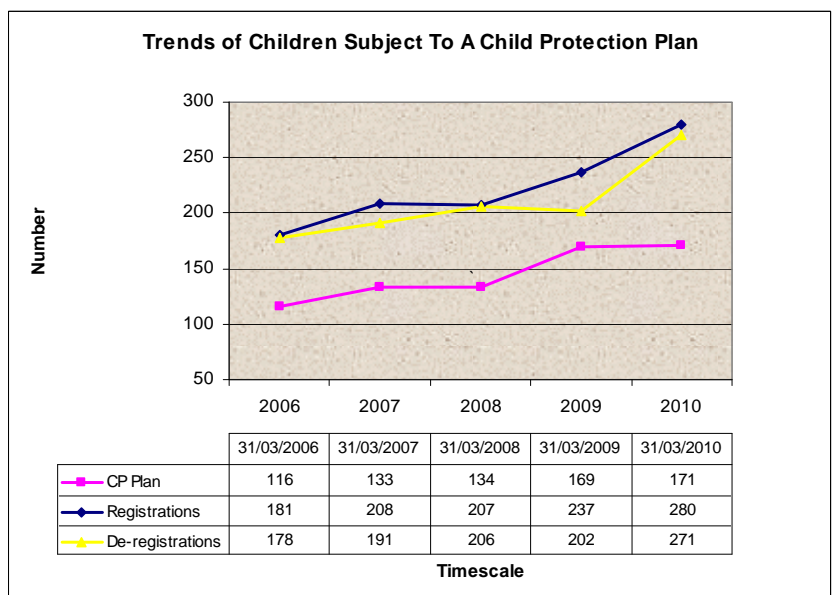


Child Protection Plans

Looking at 5-year trends of Child Protection Plans, registrations and de-registrations (Chart 3 below), it is evident that both the numbers of children subject to a child protection plan and those registered has been following an upward trend. De-registrations had remained fairly constant during the previous four years but in 2009/10 increased significantly to 271.

Chart 3

Whilst the numbers of children subject to a child protection plan is following an upward trend in Dudley (see table 5 and chart 4), numbers per 10,000 population (26) remain below that of the West Midlands average (35) and England averages (31). Dudley (42) has slightly higher than the West Midlands average of new registrations per 10,000 population and much higher than the England average (34). De-registrations in Dudley are now above that of England and the West Midlands average.



Note: Dudley's figures are for 2010 and the comparator data for 2009.

As at 31st March 2010, the highest category of abuse remains neglect (49%), broadly in line with the national average. The proportion of children with a child protection plan as a result of the risk of sexual abuse has fallen to 11%. It is important to recognise when looking at these figures that they do not reflect all children who been assessed to be at risk of significant harm, as some children will come into the care system in order to safeguard them without the need for an Initial Child Protection Conference or Plan.

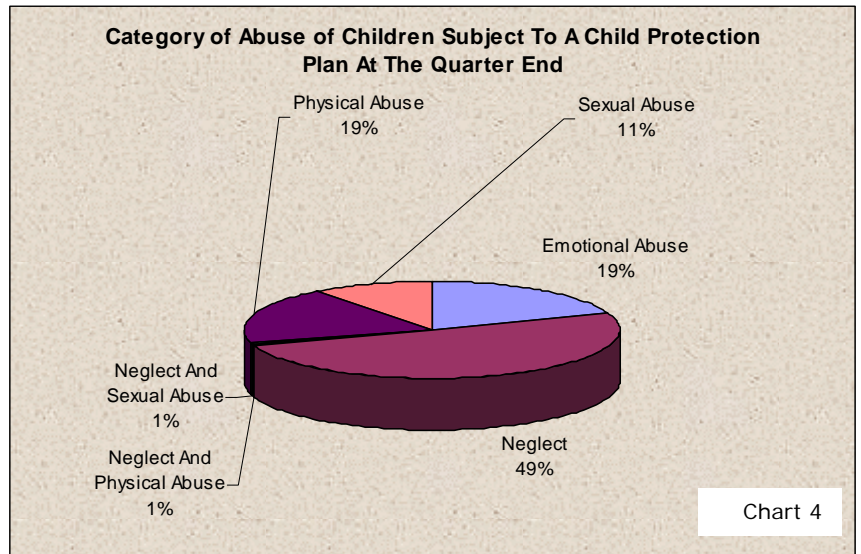


Chart 4

Ethnicity of Children Subject To A Child Protection Plan As At 31st March 2010

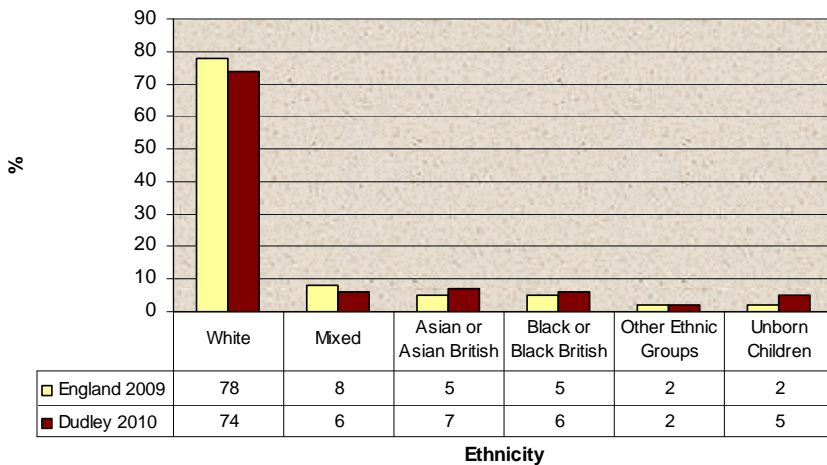


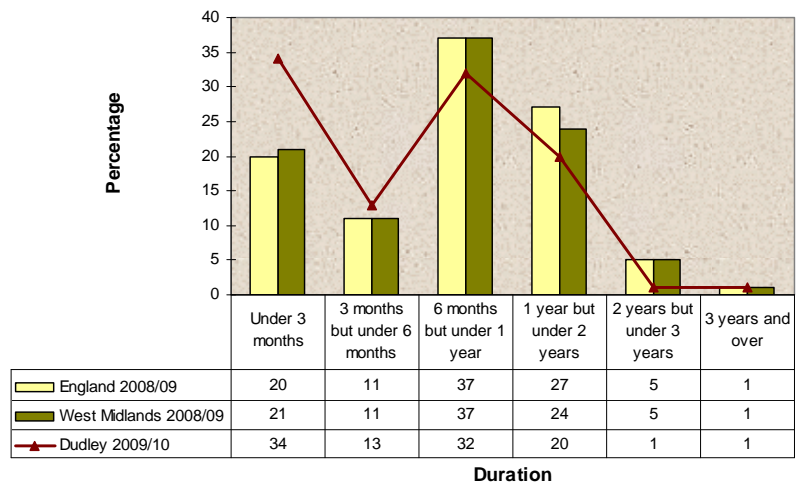
Chart 5 depicts children subject to a child protection plan @ 31.3.10 by ethnicity.

Chart 5

Chart 6 above shows comparator data of the duration of children who ceased to be a subject of a child protection plan during the financial year 2008/09 and for Dudley in 2009/10. Dudley has higher levels in the 'under 3 months' and '3 months but under 6 months' categories but less within the '1 year but under 2 years' and '2 years but under 3 years'.

Chart 6

Children who ceased to be the subject of a CPP by length of time as subject of a plan in the Financial Year 2009/10



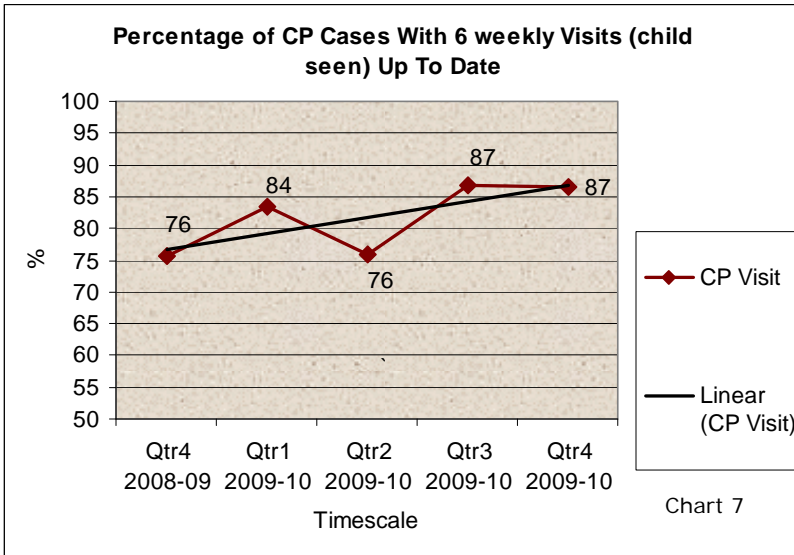


Chart 7

Allocated Key workers

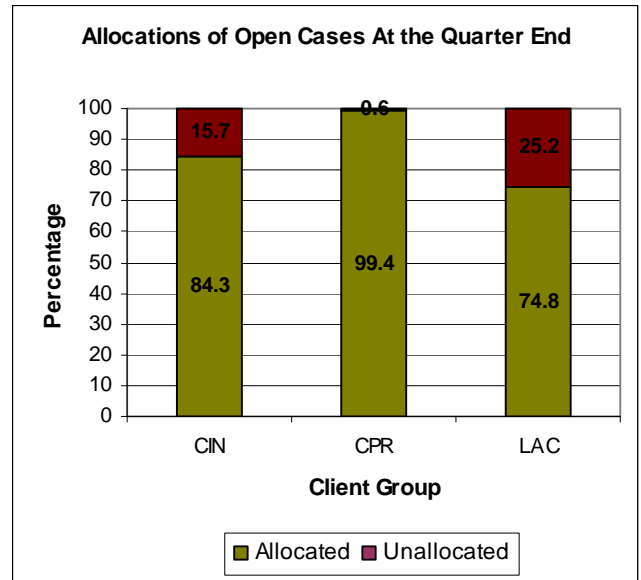
Chart 8 shows the proportion of children who had an allocated social worker @ 31.3.10 – children in need, children subject to a child protection plan and children looked after. It should be noted that some children in need and children in care have an allocated worker such as Family Support Worker or Young Persons Advisor, but such staff are not included within the DCSF definition of ‘qualified worker.’

Key Worker Visits to Children

There has been an overall rise in the proportion of child protection visits that have been undertaken within a 6-weekly period by the key worker.

During 2010-11, new standards are being developed by Children’s Social Care, which will define the frequency and quality of such visits.

Chart 8



Performance information

The DSCB Performance Data Set was implemented from 1st April 2009 (see Appendix 3). The data set is divided into two parts, ‘performance indicators’ and ‘proxy measures’. The latter relate directly to the Board’s business plan priorities and will therefore change in accordance with these. The data set is monitored on a quarterly basis by the DSCB (Executive) Steering Group and presented to the full Board twice-yearly.

Summary of quality assurance activity during 2009-10

During 2009-10, the Board enhanced its quality and performance capacity through some re-designation of human resources within Social Care and additional funding from the Primary Care Trust.

Broadly speaking, there are two main levels of audit activity – individual case-based audits and organisational-level audit activity.

The following audit activity has been undertaken across Children's Social Care, Health and the Police.

Children's Social Care

Following the publication of the Serious Case Review in respect of 'Baby P' in November 2008, Children's Social Care commissioned an external independent audit of children in need cases and child protection systems – the report findings have been incorporated into an Improvement Plan, along with the messages from other audit and self-assessment activities.

An internal audit also took place in March 2010, focusing on child protection conference quoracy, child protection plans and core groups and supervision practice within fieldwork services and the voice of the child. The reports will be presented to DSCB in June 2010.

Health

The Primary Care Trust has conducted audits in respect of individual child protection cases, supervision arrangements and training.

Police

The Child Abuse & Investigation Unit (CAIU) was audited by Lloyd House Public Protection Unit in October 2008, the outcomes from which were reported to DSCB in March 2010.

During 2009-10, several independent single-agency management reviews have been commissioned along with two joint Quality Management Reviews, which are due to be reported to DSCB in June and September 2010. The latter have incorporated some aspects of the SCIE systems approach to 'case reviews'.

Key Improvement Themes arising from Audit

- Quality and consistency of case recording practices (*police, social care & health**)
- Timeliness of, and flexibility concerning venues for, Initial Child Protection Conferences (*social care*)
 - Attendance monitoring and quoracy standards for Child Protection Conferences (*social care*)
 - Quality and consistency of child protection plans (*social care*)
 - Recording and frequency of Child Protection Core Group meetings (*social care*)
 - Supervision standards for child protection (*social care and police*)
- Standards for Key Worker visits to child subject to a child protection plan (*social care*)
 - Focus on outcomes for the child in respect of S47 investigations (*police*)

* The italic text within brackets indicates the source of the audit

Audit priorities for 2010-11

In terms of quality assurance activity, there are a number of areas for further development and improvement over the coming two years, such as:

- The establishment of a 'virtual' audit team to undertake Quality Management Reviews (QMRs) using the SCIE model
- The development of 'learning from audit' inter-agency seminars/workshops for practitioners
- The development of standards for child protection practice such as key-worker visits to children subject to a Child Protection Plan, Core Groups etc
- The increased engagement of young people within child protection processes, including feedback to inform future service delivery and planning

The following audit activity will be prioritised for the coming 12 months:

- Random sample of cases from Strategy & S47 investigations through to Child Protection Conference and protection planning;
- Specific analysis of children who have become subject to a child protection plan more than once
- Specific analysis of children who child protection plan is ended within 6 months
- Specific sample of children experiencing neglect

The Board will revise its Quality Assurance Framework during 2010-11.

Strategic Needs Assessment

DSCB has not formally conducted a joint strategic needs assessment during 2009-10. The following information, however, gives some indication of safeguarding needs in terms of demand on services and intelligence about children in need of protection. It is a collation of data from a variety of sources from key partner agencies* and includes some of the headlines from a draft report by Reconstruct**, commissioned by the local authority to provide an initial needs assessment and analysis in relation to children in need, in meeting the new 'sufficiency duty' in respect of looked after children.

Population & deprivation profile

The analysis of the needs of children and young people must be considered within the context of the overall population profile of the borough and levels of deprivation across the borough.

- Between 2004 and 2007, according to the Index of Multiple Deprivation (IMD), Dudley experienced an increase in the number of Super Output Areas (SOAs) in the 10% most deprived in England (12 to 19). The number of SOAs in the 20% most deprived category also rose (40 to 45) - just over 22% of the borough's population live within one of these deprived areas;
- According to 2007 mid-year estimates, 74,100 children & young people (aged 0-19yrs) live in the borough, which amounts to 24.5% of the total population – approximately 8,200 of these children & young people live in the most deprived areas of the borough;
- The birth rate for the borough has been on a downward trend since 1990 and is predicted to remain fairly level until 2020 at around 3,500 births per year – Dudley has a higher than average infant mortality rate

Children in Need

The following information relates to children with additional needs or assessed as needing the support of specialist services.

- In accordance with the Children Act 1989 definition of 'children in need', there were approximately 2,245 children & young people in need of support from children's social care (excluding children with disabilities) at the time of the Children in Need Census in February 2010;
- According to the School Census, 2009, there were 10,198 children who have a learning disability of which 1,473 have a statement of special educational need;
- Using the IMD tool, it is estimated that around 24,500 children & young people in the borough could be seen as 'vulnerable', namely as requiring additional support over and above universal services at some point during their childhood;
- Dudley Children's Social Care received 11,745 'contacts' during 2009-10, 3926 from the police, 1054 from health professionals and 1509 from relatives or friends – this amounts to a 68.9% increase in contacts compared to a 24.6% rise nationally;
- There has been a significant increase in the number of contacts from the police – 24.2% of all contacts relate to children living in a household where there is 'domestic violence'
- In the first three quarters of 2009-10 (1st April – 30th December), contacts deemed to require further investigation increased by 160% compared to 16.5% nationally;
- Dudley Children's Social care accepted 6721 new referrals in 2009-10, which exceeds the target of 49 per 10,000 – the upward trend has accelerated during the year compared to 2008-09.
- The percentage of referrals which were repeat referrals rose sharply to 35.5% in 2009-10 compared to 23.5% during the previous year and a national average of 23% - the largest rise in new referrals related to 12-17 age groups
- In the first three quarters of 2009-10 (1st April – 30th December), contacts deemed
- In the final quarter of 2009/10 (1st January – 31st March), 33% of new referrals required assessment or investigation – of those referrals which went on to Initial Assessment (IA), around 23% resulted in a child protection outcome
- According to strategic needs analysis from the Drug and Alcohol Action Team (DAAT), 17,368 under 16 year-olds (30%) in Dudley live with at least one binge drinking parents and 3,474 live (6%) with an 'alcohol dependent drinker'; 4,632 live (6%) with at least one adult who has used illegal drugs during the past year, 1,158 (2%) live with a Class A drug user and 1,505 (2.6%) live with a drug dependent parent (*some of these children will be in need of protection*)
- Data reported from West Midlands Police, indicates that during 2009/10 there were 481 episodes of children going missing reported as involving children & young people (an average of 40 episodes per month involving between on average 20-25 young people) – on average two-thirds are reported as missing from home; data from children's social care indicates that there were 508 reported missing episodes involving children looked after
- The MAPPA (Multi-Agency Public Protection Arrangements) Annual Report 2008-09 stated that there were 187 registered sex offenders living in the Dudley area as at 31st March 2009

Children in need of protection

The following data relates to where there is a reasonable cause to suspect that a child is suffering or is likely to suffer significant harm without the provision of services to safeguard and promote their welfare.

Comparator Data	Dudley	England 2009	West Midlands 2009
New Registrations during the year to 31/03/2010 Rate per 10,000 children aged under 18 years	42	34	41
Re-registrations during the year to 31/03/2010 Percentage of registrations	14%	13%	15%
De-registrations during the year to 31/03/2010 Rate per 10,000 children aged under 18 years	42	30	34
CPP as at 31/03/2010 Rate per 10,000 children aged under 18 years	26	31	35

- Children subject to a child protection plan in Dudley remains below West Midlands and national averages, despite some increase in activity during 2009-10;
- The average duration of child protection plans in Dudley is lower than the national average – in England 20% of children were subject to a plan for only 3 months and 68% for a year, whereby in Dudley 34% of plans ended after 3 months and 79% within a year;
- Alongside the increased child protection activity, the number of Review Conferences has increased significantly in 2009/10 showing a rise of 29% on the previous year, with Initial Conferences increasing by 21% from 2008-09.
- In 2009-10, 39 out of 280 children (14%) had previously been subject of a plan which represents an increase on the 21 out of 137 children (8.9%) last year
- Categories of abuse have continued to reflect neglect as the highest level of risk focus in child protection plans – despite an increase in sexual abuse, child protection plan tend not to reflect activity in relation to child sexual exploitation, whereby around 83 young people have been discussed at the multi-agency YPSE Panel since April 2008;

Children looked after

It is important to consider trend and needs analysis in relation to children looked after after, particularly data concerning admissions to care given that some of these relate to child protection and safeguarding activity.

- There has been a 100% increase in the numbers of children aged 1-4 admitted to care between 2005-2009, considerably exceeding the national trend despite a rise in the number of looked after children in England since 'Baby P' (Peter Connelly) – data for the 5-year period illustrates an 11% increase in admissions against a national rise of 2%, and a 47% increase in the reason for admissions recorded as 'abuse and neglect' against a national rise of 3%.
- Dudley has a higher than average number of children in care who are subject to care orders, 78.5% of looked after children in December 2009 compared to the national average of 59% - 43% of all new admissions to care in October-December 2009 were as a result of an Emergency Protection Order (EPO) or police powers.
- Of 628 new admissions to care between 1st April 2006 and 31st March 2010, 282 (45%) entered the care system without any preceding child protection activity, 81 started with a child protection plan and the rest were subject to both processes together;
- A recent ADCS study indicates that EPOs and care orders have increased locally by 110% and 138% respectively, compared to 32% and 38% nationally, whilst 20% more children started to be looked after in Dudley at the end of December compared to 8% nationally.

Summary Needs & Gap Analysis

Although providing a robust analysis of the data is problematic for many reasons, the overall picture of the data available at the time of writing this report appears to indicate the following:

A high volume of contacts and referrals being made to children's social care which do not progress to an Initial Assessment (even taking into account domestic abuse)

DSCB recommends the following:

- *The Children's Trust ensures that sufficient resources are available, supported by good quality training and procedures, to support the implementation of Common Assessment across all agencies*
- *The Children's Trust ensures that sufficient resources are commissioned or provided to support vulnerable children & young people*
- *The outcomes of the Service Improvement Review in respect of domestic abuse are reported via DSCB to the Children's Trust in due course*
- *The development of early intervention multi-agency teams be progressed, led by the Children's Trust*

High numbers of young people either becoming looked after or remaining in the looked after system

DSCB recommends the following:

- *The development of a multi-agency strategy to prevent children becoming looked after by the local authority, led by the Children's Trust*
- *Further audit and research into the thresholds and relationship between child protection interventions and the need for children to become looked after by the local authority, led by DSCB*
- *A report on the local authority's capacity to meet the new sufficiency duty in respect of looked after children to be presented to elected members and the Children's Trust*

In 2010-11, DSCB will work closely with the Children's Trust to develop a framework for a joint strategic needs analysis to inform the 'staying safe' component of the Children & Young People's Plan.

* Joint Strategic Needs Analysis (Public Health, Dudley PCT), Dudley Children & Young People's Plan 2008-09, School Census 2009, Children in Need Census 2010

** DSCB is grateful to Ruby Parry & Jim Stewart from Reconstruct

Serious Case Reviews

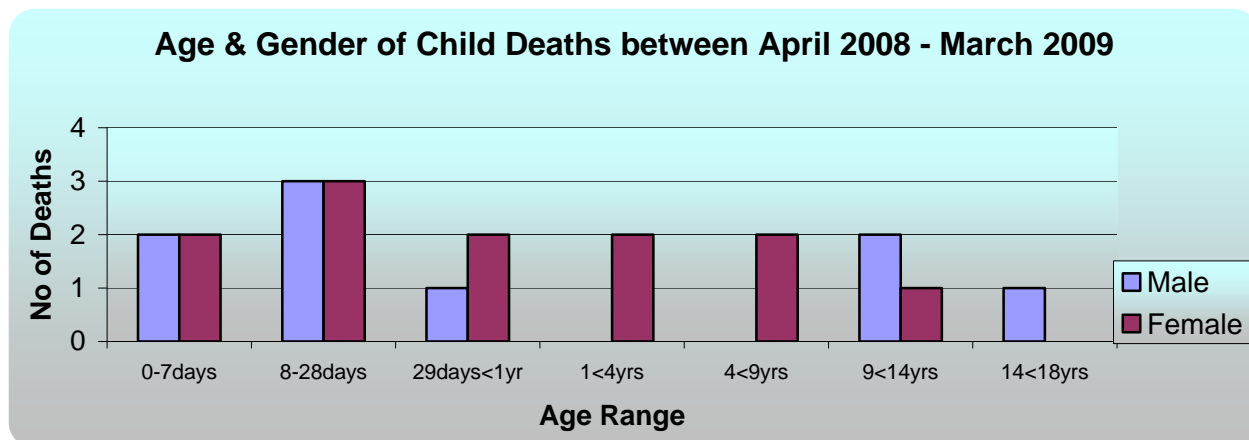
There have been no Serious Case Reviews conducted by DSCB during 2009-10. A previous Serious Case Review in respect of Child D who died in 2007 has yet to be published due to the criminal proceedings not being concluded. The process involved the appointment of an 'independent' chairperson for the SCR Panel.

Although it is not possible to publish the Executive Summary at this stage, it is important that we enable practitioners and managers to learn any lessons that have arisen from the review. These can be summarised as:

- The importance of good and timely information-sharing between health visitors and GPs, notably in respect of post-natal care
- The need to strengthen clarity between Sudden Unexpected Death in Infancy (SUDI) and criminal and child protection investigations where concerns have arisen about the possibility of a child death being 'suspicious'
- Consideration of ways to engage fathers in ante and post-natal programmes

Child Death Overview Panel

Child death review arrangements



DSCB launched its child death review panel in May 2008, jointly with Sandwell Safeguarding Children Board. During the first year, 21 deaths were notified to the Board, of which 20 were reviewed by the Child Death Review Panel. Of the 20 children's deaths reviewed by the Child Death Review Panel during 2008-09, none were analysed as being 'preventable'* in accordance with the above definition. However, in one case the panel considered there to be potentially modifiable factors extrinsic to the child's death. The 2008-09 report identified a number of areas for development:

Rapid Response

- Improved rapid response arrangements, particularly by health due to the introduction of an out of hours rota and the appointment of a specialist nurse
- Published a leaflet for parents, carers and other family members outlining rapid response and review arrangements
- Improved monitoring and audit capacity in respect of practice and procedures
- Agreed a new regional protocol with Coroners in respect of sudden unexpected death in childhood

Overview

- Improved notifications in respect of child deaths and the systems for gathering information electronically
- Improved the involvement and contribution of parents/carers in the review process
- Improved dissemination of key findings and lessons from the review process
- Improved understanding of neonatal deaths

During 2009-10, we have focused efforts on improving our rapid response arrangements to ensure more effective information-sharing and inter-agency working. We have also agreed a working relationship with both the Registrars and Coroners Office in the light of new legislation and guidance.

In 2009-10, the Child Death Review Panel was notified of 27 child deaths, of which 17 reviews have been completed. The joint CDOP Annual Report (with Sandwell SCB) is due to be published in July 2010.

Our priorities for the coming 12 months, taking account of revised guidance within Chapter 7 of *Working Together*, will include:

- **Dissemination of the new DCSF leaflet to parents through the rapid response processes and further consideration of ways to involve bereaved parents and families in the reviews**
- **Continue to improve rapid response processes and the quality of information provided for the Child Death Review Panel**

**Definition of 'preventability: events, actions or omissions contributing to the death of a child or to substandard care of a child who died, and which, by means of national or local achievable interventions can be modified (DCSF, 2008)*

Lessons learnt and actions taken

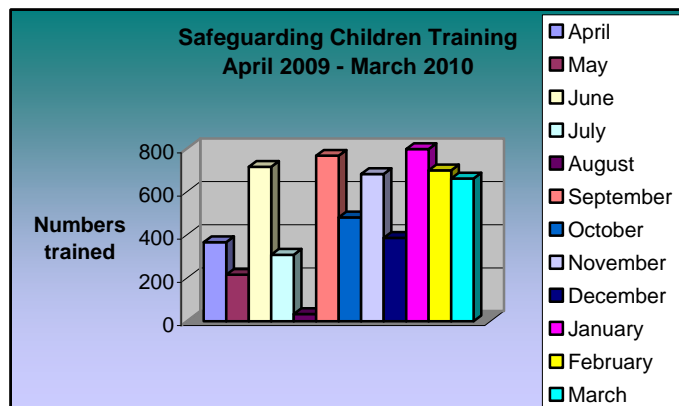
LSCB reviews of child death, whether unexpected or expected, are still evolving in terms of robustness and effectiveness, and so it is very much early days in terms of the maturity of our processes, data, findings and outcomes.

Child death reviews: two years on – the clearest theme that has arisen from our joint analysis of cases with Sandwell relates to 'co-sleeping' issues with very young children. Sandwell has taken a lead on developing a 'safer sleeping' campaign in collaboration with the Foundation for the Study of Infant Death (FSID), which is to be launched at our joint events in June 2010.

Report from Sub-Committees

Training & Development

In 2009-10, 1883 people attended a DSCB multi-agency training safeguarding course compared to 1805 in 2008-09 and 1519 in 2007-08, which represents a 24% increase over two years. This figure does not include people who attended single-agency child protection training, which is likely to be over 3,000 during the year. There was also a rise in the number of training sessions facilitated by the Board, notably at Level 2 with the introduction of a half-day Level 2 refresher course and with the continued expansion of the Level 3 programme.



The Board has developed two levels of 'Training for Trainers' in order to enable colleagues to either contribute to the delivery of the multi-agency programme or facilitate training within their own organisations such as schools and colleges.

Increasingly the Board is developing training in collaboration with other partnerships such as Community Safety and the Safeguarding Vulnerable Adults Board. Around 90% of the DSCB training programme is delivered by locally employed professionals.

There remains significant pressures on the programme, with too few trainers able to deliver Level 2 and too little income to meet the demand and to expand the programme. The revised Training & Development Strategy will address some of these issues by pre-focusing our priorities and placing accountability for ensuring staff have completed Level 1 training with partner organisations. The e-learning modules will also support this approach.

One of our most significant achievements as a Board last year was to establish S4K (Young People's Safeguarding Board), which met for the first time with the main Board in March 2010. Their first priority is anti-bullying.

Graham Tilby, Chair of Sub-Committee and Jackie Jennings, Training Team Co-ordinator

A refreshed Training & Development Strategy will be presented to DSCB in July 2010.

KEY PRIORITIES FOR 2010-11

- Implement revised public education & communication strategy to increase community awareness of key safeguarding issues such as the sexual exploitation of young people
- Implement revised Training & Development Strategy taking into account new *Working Together* guidance
- Continue to develop joint training with Dudley Safeguarding Vulnerable Adults Board and other partners
- Continue to undertake training for trainers in accordance with new standards developed by the Board
- Continue to develop S4K as a Young People's Safeguarding Board and their relationship with DSCB

Policy, Procedures & Practice

Dudley Safeguarding Children Procedures were launched as an electronic manual in January 2008. The e-manual contains a comprehensive set of procedures based on *Working Together* (2006) and supplementary guidance issued since. The main task of the sub-committee is to ensure that these procedures are up-to-date in accordance with national guidance, relevant and user-friendly for people working or coming into contact who need to have a familiarity with them to those working in the field of child protection on a daily basis. This is challenging, particularly as the safeguarding agenda becomes broader, and the needs of children and their families more complex.

During the year, the Sub-Committee has overseen the revision of procedures in respect of child trafficking and child sexual exploitation, use of images guidance, forced marriage as well as revisions in the light of other requirements. The sub-committee has helped to shape the work on domestic abuse (DART). We have also worked with Dudley Council for Voluntary Service in terms of safeguarding standards for smaller voluntary and community groups.

The scope of the Sub-Committee has been expanded to include practice and audit findings, in order to ensure that we have a better understanding of the application of procedures by practitioners and can translate learning from our quality assurance processes back into procedural guidance for colleagues working on the front-line.

Christine Ballinger, Chair of Policy, Procedures & Practice Sub-Committee

The Safeguarding Children Procedures will be revised in the light of new *Working Together* guidance and re-launched in November 2010.

PRIORITIES FOR 2010-11

- Revise local safeguarding procedures in the light of new *Working Together* and other supplementary or specific safeguarding guidance
- Undertake inter-agency briefings to inform children's workforce of main procedural changes and other safeguarding developments
- Undertake a review of public and professional leaflets in respect of safeguarding awareness and child protection processes

Dudley safeguarding Children Procedures:

<http://safeguardingchildren.dudley.gov.uk/information-for-professionals/safeguarding-children-procedures>

Safer Recruitment & Employment

The Safer Recruitment & Employment Sub-Committee takes a lead role in collaboration with Dudley Safeguarding Vulnerable Adults Board and colleagues from Human Resource Departments in respect of three key strands:

- Safer recruitment practices such as CRB
- Safer working practices for people working with children & young people
- Management of allegations against people working with children & young people

The main focus during the last 12 months has inevitably been preparation for the Vetting & Barring Scheme, whereby the group oversaw a series of inter-agency briefings for staff and volunteers working with vulnerable children and adults during November 2009. Work has continued within key organisations in preparation for the scheme being 'live' to new entrants to the 'regulated positions' or people changing their jobs from November 2010.

There has been a continued rise in activity involving the management of allegations or concerns in respect of adults who work with children or young people. This involves staff who are alleged to have:

- behaved in a way that has **harmed**, or may have harmed, a child
- possibly committed a **criminal offence** against, or related to, a child; *or*
- behaved towards a child or children in a way that indicates s/he is **unsuitable** to work with children.

A separate 'Management of Allegation's Task Group was established to oversee the revision of the procedures in the light of new practice guidance, which is still awaited in final form. The group has developed a Level 3, 1-day course and engaged in a commissioning process for an electronic database for the Local Authority Designated Officer ('LADO').

The annual report from the Local Authority Designated Officer (LADO) will be presented to DSCB in July 2010.

Graham Tilby, Vice-Chair – Safer Recruitment & Employment Sub



PRIORITIES FOR 2010-11

- Implement new Vetting & Barring Scheme from November 2010
- Produce guidance for staff using social networking sites and the potential implications for safer working & employment practices
- Revise and implement management of allegations procedures following publication of DCSF guidance on handling complaints against people who work with children

Serious Case Review Sub-Committee

Although there have been no formal Serious Case Reviews during the year, the Sub-Committee retains responsibility for the oversight of the action plan arising from Child D. In addition, during the last 12 months the SCR Sub has initiated two Quality Management Reviews and received reports in respect of other single-agency independent management reviews in promoting transparency and focusing on aspects arising from these relating to inter-agency working.

Christine Ballinger, Chair of SCR Sub-Committee

At the time of writing this report, the SCR is scheduled to receive three Quality Management Reviews and two single-agency management reviews during the next 6 months.

Reports from Panels

YPSE (Young People at risk of Sexual Exploitation) Panel

The YPSE Panel was established in April 2008, following the publication of national supplementary guidance and research and increasing concern from local practitioners in respect of young people at risk of sexual exploitation. The Board commissioned Walsall Street Teams (WST) to undertake some local awareness-raising with a view to identifying needs and supporting young people. Dudley Street Teams is a three-year funded project (DSCB and Comic Relief) from 1st April 2009, hosted by WST working closely to support the YPSE Panel. The project offers individual and group work to young people (girls) at risk or involved in sexual exploitation, alongside training programmes for schools and other professionals.

During the course of the two years, YPSE has discussed around 80 young people, 15 of which have been worked with directly by Dudley Street Teams due to high levels of risk and engagement in sexually exploitative activities. The majority of these young people are in the care of the local authority, some of whom have subsequently been placed in secure accommodation as a consequence of the risks to their safety and well-being. No prosecutions have been made in respect of adult perpetrators.

Colleagues from the YPSE Panel have been involved in two West Midlands Police Operations, aimed at taking a more co-ordinated and strategic approach to the sexual exploitation of girls, notably within the care system by young Asian adults. Following the re-structuring within West Midlands Police, each Public Protection Unit now has a designated (CEIT) police officer leading on these issues, which has been particularly welcome in terms of sharing local intelligence and work closely with the Dudley Street Teams Project.

Jackie Jennings and Pauline Owens, Joint Chairs of YPSE Panel

The oversight of work in respect of child sexual exploitation will form part of a wider Vulnerable Children & Young People's Task Group, which is due to be established during 2010-11.

PRIORITIES FOR 2010-11

- Review YPSE Panel and local arrangements in respect of sexual exploitation and implement improvements
- Deliver Solomon programme within schools and other settings
- Conduct a public awareness campaign with regards to the risks of girls becoming involved in sexual exploitation
- Explore ways of deterring perpetrators using appropriate legislation and information-sharing

Child Death Review Panel

The work of the Child Death Review Panel has been outlined in a previous section of this report.

Reports from Task Groups

Emotional Abuse & Neglect Task Group

The Neglect Task Group was established following a consultation process 'are we neglecting the neglected?' and a report to the Children's Trust and DSCB. The Task Group is currently considering models and tools to improve risk assessment processes such as 'Signs of Safety' and the 'Graded Care Profile'. The report also highlighted the importance of a more preventative approach to neglect through parenting programme and early intervention such as Common Assessment Framework (CAF) and Team Around the Child (TAC). A multi-agency workshop was held to support the exploration of tools during February 2010.

For more information contact jackie.jennings@dudley.gov.uk



E-Safety Strategy Group

Our e-safety strategy has been revised during 2009-10 to include developing ways of involving young people as 'trainers', tackling issues arising from cyberbullying, gaming and social networking, and continuing to develop new ways of communicating the importance of e-safety to young people, parents and public services. Young People from Dudley schools took part in a regional online cyberbullying survey, the findings of which are now available and indicate positive progress

in terms of e-safety education within the curriculum but some worrying messages about the proportion of young people who chose not to follow this advice.

Dudley Grid for Learning (DGfL) have taken-over the e-safety sessions for parents and the dissemination of these key messages to schools alongside several other initiatives co-ordinated through a DGfL E-Safety Working Group.

For more information contact jackie.jennings@dudley.gov.uk or shirley.hackett@dudley.gov.uk

Domestic Abuse Task Group

In an average month, the local police receive around 400 notifications of domestic abuse incidents, of which on average 80% (320) involve children or young people within the household. This has placed considerable demands on the ability of our child protection agencies – police and social care – to respond effectively and in accordance with assessed needs and risks.



During 2009-10, we have developed a 'Domestic Abuse Response Team' (DART) involving police, primary care, social care, education and adult mental health and implementing the revised Barnardos Risk Assessment Tool which has been adopted regionally. An interim evaluation of this initiative will be presented to DSCB in May 2010. The Board will be supporting a Service Improvement Review in respect of domestic abuse arrangements across the borough with a view to identifying gaps in provision and progressing the implementation of the vision for a 'one-stop shop' (co-location of support services) approach to domestic abuse.

For more information contact anne.boden@dudley.gov.uk

Anti-Bullying Steering Group

“The last decade has seen children’s services waking up to the problem of bullying. Thankfully, there is very little trace of attitudes that commonly used to minimise it as ‘kids being kids’, or a necessary rite of passage. Our awareness is now high; our actions still need to be smarter”

Professor Sir Al Aynsley-Green

Safe to Play: A Consultation with children and young people, Dudley MBC

In response to Dudley’s performance in respect of National Indicator 69 and the findings of the ‘Safe to Play’ survey (completed by over 4,500 children in Dudley), the Board has been supporting the Children’s Trust in aiming to improve our responses to anti-bullying across the borough. The theme for anti-bullying week in November 2009 was cyberbullying – Dudley helped to develop and took part in the regional cyberbullying survey.

The group, led by the Children’s Trust, will focus on how to minimise the prevalence and impact of bullying, including cyberbullying, on children within vulnerable groups. A draft Anti-Bullying Policy is being consulted upon and funding has been secured from Dudley Community Partnership for an Anti-Bullying Co-ordinator, the appointment for which is due to take place in June 2010. For more information contact mike.wood@dudley.gov.uk



Dudley Safeguarding Children Board is committed to engaging and empowering children and young people so they can stay safe from harm, exploitation & abuse and from bullying in the real & virtual world

Reports from Safeguarding Forums

Child Protection Co-ordinators (Education) and 14+ Safeguarding Forums

These Forums meet on a once-termly basis to identify key child protection and safeguarding issues and provide Child Protection Co-ordinators with up-dates in respect of key national, regional and local developments. The Forum provides a useful opportunity to consult and network, share good practice and develop tools and templates for common use across schools, colleges and other educational settings.

For more information contact funbir.jaspal@dudley.gov.uk

Health Safeguarding Forum

All of the health organisations in the Dudley health economy are committed to safeguarding and protecting children, and have set up a Health Safeguarding Forum, which meets bi-monthly. The aim of the forum is to ensure that safeguarding and protecting children is given priority and is integral to clinical governance arrangements within all health organisations and that health organisations work together in a proactive way to deliver on this agenda. The Group has clear representatives from Dudley PCT, Dudley Group of Hospitals, West Midlands Ambulance Service, Walsall and Dudley Mental Health Partnership Trust, Primecare, and NHS Direct. For more information contact pauline.owens@dudley.nhs.uk

Local Forum (Police & Social Care)

Senior operational colleagues from police and children's social care meet on a 6-weekly basis to discuss key child protection and safeguarding developments, operational and practice issues and strategic issues that have implications for joint working. For more information contact graham.tilby@dudley.gov.uk

Sport, Recreation & Physical Activity Safeguarding Forum

The purpose of this sub group is to promote and advise on safeguarding in sport, PE and Physical Activity to enhance the safety of children and young people in the borough. The group will provide a framework for safeguarding in Sport, PE and Physical Activity to support agencies & providers in meeting their statutory duties & responsibilities.

For more information contact rachael.doyle@dudley.gov.uk

A Directorate of Children's Services Safeguarding Forum (Dudley MBC) will be established during 2010-11 to oversee key issues affecting services and schools.

APPENDICES

APPENDIX 1 Core Messages

For everyone

- Every child matters
- Safeguarding children & young people is everyone's business and a responsibility shared across the whole community
- What safeguarding is
- A basic understanding of the role of DSCB

Children & young people

- How to keep safe
- The views, wishes and feelings of all children & young people should be heard
- What to do if you or someone you know is being harmed or harming themselves
- For those involved within the child protection system, a basic understanding of the child protection system and what it means for them

Parents & carers

- How to provide safe parenting
- Sources of parenting advice and support
- How to protect your child and any others you are responsible for
- What to do if you are worried about a child you know being harmed or harming themselves
- For those involved within the child protection system, the roles and responsibilities of the different agencies involved in child protection and how the safeguarding process works

Voluntary & community organisations

- What support the Board can provide, in particular in respect of training and advice with regards to safeguarding policies and procedures, and how to access this
- What to do if a they are worried about a child or young person they are involved with being harmed or harming themselves
- What good safeguarding practice is and how this can be provided
- How to engage with DSCB and its sub-groups
- How to access the Safeguarding Children Procedures
- How to recruit staff and volunteers safely and deal with allegations made against them
- Key national, regional and local developments in safeguarding

Board partners & statutory agencies

- The role of DSCB and how they can engage with it and its sub-groups
- Their statutory duty to safeguard and promote the welfare of children
- Availability of training and how to access it
- Understanding of safeguarding children procedures and how to access them
- How to raise concerns about an agency's practice and what will happen in response
- Learning from serious case reviews and quality assurance/audit processes
- What is considered to be good practice, how this is demonstrated and how it can be replicated
- The shared beliefs and principles set out in Part A of the Safeguarding Children Procedures
- Key national, regional and local developments in safeguarding

SOURCE: DSCB Communication & Engagement Strategy 2009-12

Schedule of Activities planned for 2010-11

PERIOD	THEMES	ACTIVITY	TARGET AUDIENCE
April – June 2010	<p>National Child Safety Week</p> <p>'Safer Sleeping' and child accident prevention</p> <p>Safer organisational practices within the voluntary sector</p>	<p>CDOP – Two Years On (inter-agency briefing) Briefings</p> <p>'Safe in Your Hands?' Voluntary & Community Sector Briefings/training</p>	<p>Practitioners and operational managers</p> <p>Staff & volunteers within voluntary, community and faith groups</p>
July - September 2010	Child Sexual Exploitation	Website & You Tube Public awareness	Public awareness
October – December 2010	<p>Anti-Bullying</p> <p>Working Together – safeguarding is everyone's business</p>	<p>Anti-Bullying Week</p> <p>Inter-Agency Briefing sessions</p> <p>Publicity campaign</p>	<p>Young People & Parents</p> <p>Practitioners & managers</p> <p>Public awareness</p>
January - March 2011	<p>Internet Safety Day</p> <p>Private Fostering</p>	<p>E-Safety event</p> <p>Publicity campaign</p>	<p>Young People & parents</p> <p>Communities & practitioners</p>

APPENDIX 2 Summary of Child Protection Data

	2005/06	2006/07	2007/08	2008/09	2009/10	5 year average
Strategy Discussion						
Number of Strategy Discussions	453	441	457	574	494	484
Number Requiring S.47 Investigation	417	426	439	530	474	457
% Requiring S.47 Investigation	92.1%	96.6%	96.1%	92.3%	96.0%	92.6%
Section 47 Investigation						
Number of Section 47 Investigation	435	427	433	524	453	454
Number Requiring Initial Case Conference*	212	190	241	276	181	220
% Requiring Initial Case Conference	48.7%	44.5%	55.7%	52.7%	40.0%	48.4%
Initial Case Conference						
Number of Initial Case Conference*	202	202	243	264	319	246
Number Subject to Child Protection Plan	174	182	203	219	268	209
% Subject to Child Protection Plan	86.1%	90.1%	83.5%	83.0%	84.0%	85.0%
Child Protection Plan						
Number of Child Protection Plans	116	133	134	169	171	145
New Child Protection Plans	181	208	207	237	280	223
Ceased Child Protection Plans	178	191	206	202	271	210
CPP Category of Abuse						
Neglect	58	63	66	91	86	73
Physical	8	26	11	28	32	21
Sexual	27	12	25	8	18	18
Emotional	12	21	24	35	33	25
Multiple	11	11	8	7	2	8
Total	116	133	134	169	171	145
Review Case Conferences						
Number of Review Case Conferences	379	483	421	474	613	474

The above table shows Child Protection data for the past 5 years, plus a 5-year average. The number of Review Conferences has increased significantly in 2009/10 showing a rise of 29% on the previous year. Initial Case conferences have also increased by 21% on last year.

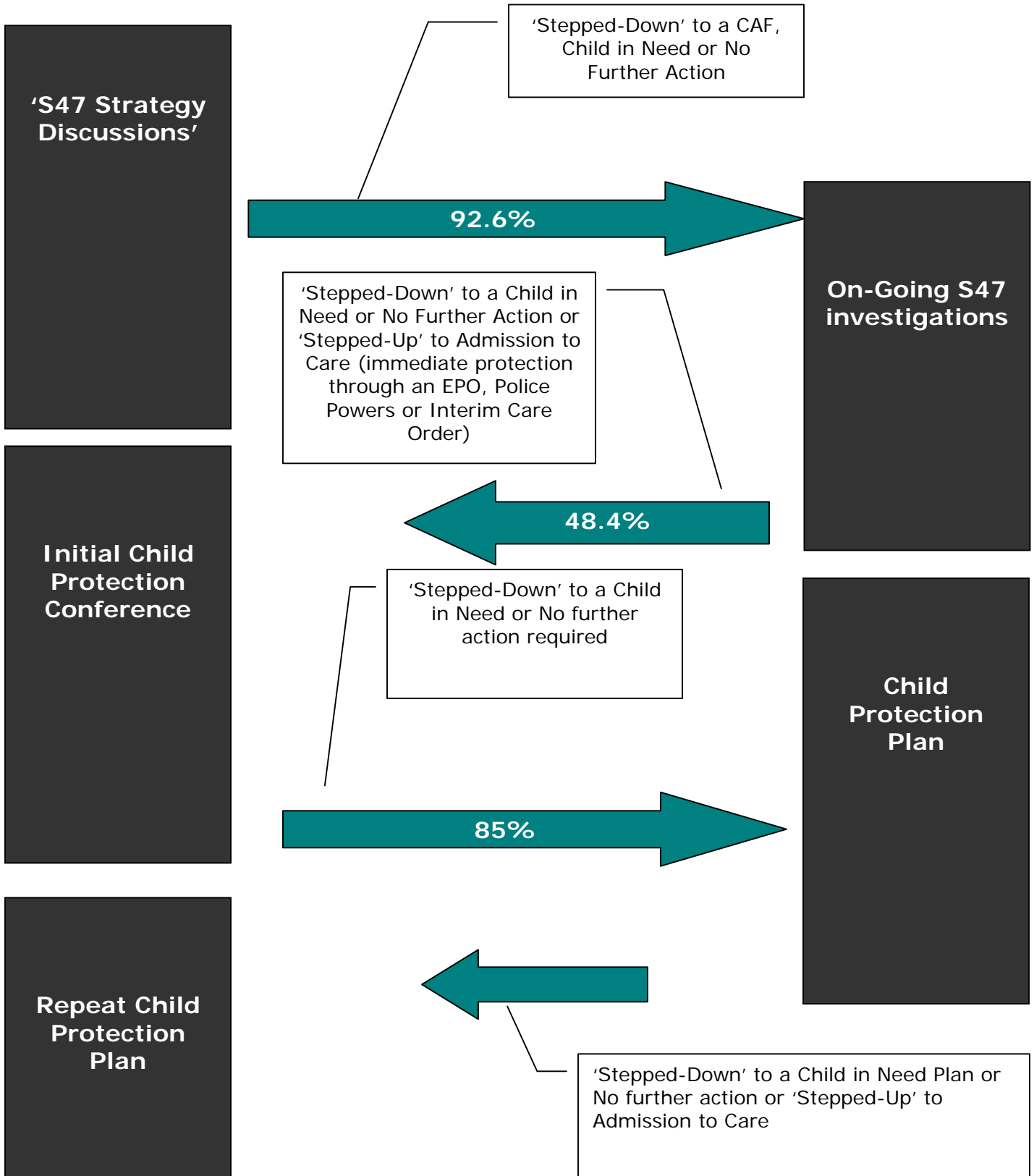
Numbers of De-registrations (Ceased Child Protection Plans) has been following an increasing trend throughout the five-year period. Earlier in the report it was discussed that children are subject to a plan for shorter periods of time than previously and shorter periods of time than comparator groups.

Activity levels in Child Protection are high in Dudley with a higher rate of new registrations and de-registrations in 2009/10 than comparator groups in 2008/09. Re-registration rates in Dudley (2010) are similar to the West Midlands and England comparator groups (2009). However, rates of children subject to a plan per 10,000 population, remain much lower in Dudley than in comparator groups.

Children's Social Care recording of child protection activity especially with regards to Strategy Discussions and S47 Investigation dates is not complete with many missing dates on Swift. It is hoped that this can to be addressed in some part with the implementation of the Integrated Children System (ICS) Child Protection module, which requires a sequence of events to progress a case through the child protection process.

SOURCE: Children's Social Care Operational Data Set (Quarter 4, 2009-10)

Conversion rates – 5 year average trend



SINGLE-AGENCY PRIORITIES 2009/11

Directorate of Children's Services

Implement Safeguarding Improvement Plan (Social Care) arising from audit and self-assessment

Lead Officer: Christine Ballinger

Establish Directorate Safeguarding Forum to ensure:

- awareness of 'what to do if..' across all workforce within services
 - consistent safer recruitment & employment practices
- specific safeguarding issues relating to schools and educational providers are progress

Lead Officers: Graham Tilby

Ensure that there is sufficiently broad and high quality provision including vocational, practical and applied options, and effective and targeted safe provision for young people at risk of disengagement pre-16 and post 16

Lead Officer: Helen Ellis, Ian Curnow & John Cunningham

West Midlands Police

Contribute to the continued development of the 'Domestic Abuse Response Team' (DART) hosted within the Public Protection Unit

Lead Officer: DCI Andy Carter

Primary Care Trust

- Support inter-agency working in respect of neglect
- Progress the role of the NHS in responding to domestic abuse and violence against women and children
- Deliver training for the workforce to ensure that they are equipped to discharge their responsibilities in safeguarding and promoting the welfare of children & young people effectively

Lead Officer: Pauline Owens

Dudley Group of Hospitals NHS Trust

- Establish a robust process for ensuring the delivery of appropriate level of safeguarding children training for our PFI partners' staff
- In the light of the review of 'Working Together' guidance and taking account of the Royal College recommendations, work with local partners to agree the content of training and the levels of training for all staff groups and deliver this accordingly

Leads: Denise McMahon & Dr Zala Ibrahim

Dudley & Walsall Mental Health Partnership Trust

- Ensure training agreements relating to levels and groups of staff are in place across the trust
- Embed safeguarding in clinical practice through mechanisms such as supervision and nominated champions in clinical areas
 - Progress the local implementation of Vetting & barring

Leads: Maggie MacDonald

Schools & Colleges

Improve compliance against Safeguarding Checklist developed by DSCB through audit activity to ensure all schools achieve satisfactory/good in respect of Ofsted judgements

Lead Officer: Graham Tilby

National Probation Service

TBC

Lead Officer: Bronwen Elphick

Dudley Voluntary & Community Sector

Implement safeguarding standard and assessment process for small-medium size voluntary & community organisations

Lead Officer: Arnie Troxler

Directorate of Urban Environment

- Develop and implement safeguarding policies & procedures for the Directorate
 - Implement safeguarding training across the Directorate
 - Roll-out ISA Vetting & Barring across the Directorate

Lead Officer: Duncan Lowndes & Rachael Doyle

CAFCASS

- Ensure case plans and reports identify ECM outcomes for children & young people
- Safeguarding standards are judged to be satisfactory/good in all court reports as reported via reliable quality assurance processes
- Safeguarding Assessment to be completed with each member of staff twice-yearly

Lead Officer: Vaselee Crawford

West Midlands Fire Service

TBC

Lead Officer: Steve Vincent

West Midlands Ambulance Service

TBC

Lead Officer

Contacts for DSCB



If you would like to know more about the work of Dudley Safeguarding Children Board or spend some time with us, please don't hesitate to contact one of the Safeguarding & Review Team on 01384 813061 or email me on graham.tilby@dudley.gov.uk or jackie.jennings@dudley.gov.uk

If you require specific advice or guidance in respect of safeguarding issues affecting your agency, please contact:

Early Years	Kim Sharratt, Child Protection Training Officer kim.sharratt@dudley.gov.uk
Primary Health Care	Pauline Owens, Designated Lead Nurse pauline.owens@dudley.nhs.uk or Alison Wills, Named Nurse alison.wills@dudley.nhs.uk
Education (Schools & Colleges)	Funbir Jaspal, Child Protection Officer (Education) funbir.jaspal@dudley.gov.uk
Youth Services	Suzanna Harkness, Education Liaison Officer suzanna.harkness@dudley.gov.uk
Sport & Physical Activity	Rachael McKiernon-Doyle, Principal Sport & Physical Activity Manager rachael.doyle@dudley.gov.uk
Police	Inspector Mark Wilson, Public Protection Unit mark.wilson@west-midlands.pnn.police.uk
Social Care	Jackie Jennings, Safeguarding Development Manager jackie.jennings@dudley.gov.uk or Angela Plant, Quality & Performance Manager Angela.plant@dudley.gov.uk
Dudley Group of Hospitals	Carol Weston, Named Nurse Carol.Weston@dgoh.nhs.uk or Sally Abbatiello-Burns, Named Midwife (Safeguarding) Sally.Abbatiello-Burns@dgoh.nhs.uk
Dudley & Walsall Mental Health Trust	Maggie MacDonald, Lead for Safeguarding Children Maggie.MacDonald@dwmh.nhs.uk

APPENDIX 4: Self-Assessment using the LSCB Effectiveness Tool (DCSF, 2009)

PRINCIPLE	KEY IMPROVEMENT THEMES
<i>Principle 1:</i> Good governance means focusing on the LSCB's purpose and on it's intended outcomes	<ul style="list-style-type: none"> ▪ Develop Protocol with Children's Trust to include needs analysis/commissioning, challenge & scrutiny ▪ Develop stronger links with LSP & LAA
<i>Principle 2:</i> Good governance means performing effectively in clearly defined functions and roles	<ul style="list-style-type: none"> ▪ Develop performance management framework to include impact measures and benchmarking
<i>Principle 3:</i> Good governance means promoting the LSCBs values and demonstrating good governance through behaviour	<ul style="list-style-type: none"> ▪ Review role & job description of DSCB members to include behaviour code, membership standards, skills & competencies
<i>Principle 4:</i> Good governance means taking informed transparent decisions and managing risk	<ul style="list-style-type: none"> ▪ Introduce risk management framework and processes
<i>Principle 5:</i> Good governance means developing the capacity and capability of the LSCB to be effective	<ul style="list-style-type: none"> ▪ Improve human and financial resource planning
<i>Principle 6:</i> Good governance means engaging stakeholders and making accountability real	<ul style="list-style-type: none"> ▪ Develop and implement Communication Strategy to include media engagement ▪ Improve engagement with children, young people & families
<i>Principle 7:</i> (additional statements): Good governance means that the functionality of the LSCB and it's sub- structure is effective	<ul style="list-style-type: none"> ▪ Develop standardised formats for terms of reference of sub-committees etc

Self-Assessment was completed by DSCB representatives from the Youth Offending Service, Children's Social Care (Safeguarding & Review), West Midlands Police, Primary Care Trust , Connexions, Dudley/Walsall Mental Health Trust and Children's Centres/Extended Schools.

APPENDIX 5: DSCB Performance Data Set

Inter-Agency Performance Data Set 2009/10 (Quarter 4)

Key to Status Symbols Performance has declined Performance has remained the same Performance has improved
 Target Not Achieved Target Met Target Exceeded

Performance Measures	07/08 Actual	08/09 Target	08/09 Actual	09/10 Provisional	Status	09/10 Target	10/11 Target	Lead	Comments
% of initial assessments for children's social care carried out within 7 working days of referral NI 59	61.2%	67%	66.3%	55.5%		67%	70%	Social Care (CB)	2064 IA's during 2009/10 – performance has dropped and remains below comparator groups – national average 70%. Impacted by DART and increased volume – IP required
% of core assessments for children's social care carried out within 35 working days of start NI 60	76.9%	90%	83.7%	82.4%		87%	95%	Social Care (CB)	580 CA's completed during 2009/10 . Timescale performance is poorer than previous year. England average 80%
Initial Child Protection Conferences held within 15 working days (WM REG 4)	58.1%	55%	46.1%	23.6%		60%	65%	S&RU (GT)	Performance has fallen considerably. Improvement Plan required
Proportion of Child Protection Review Conferences held within timescale NI 67	98.8%	100%	100%	100%		100%	100%	S&RU (GT)	All 97 CP Review conferences were in timescale in the year to 31 st March 2010
Child Protection Plans lasting 2 years or more NI 64	3.4%	3.0%	2.0%	0.7%		4%	5%	S&RU (GT)	2 children whose plans ended in the year to 31 st December 2009 had had a CPP Plan for longer than 2 years (out of 278 'de-registrations') – performance consistently good

Inter-Agency Performance Data Set 2009/10

Key to Status Symbols Performance has declined Performance has remained the same Performance has improved
 Target Not Achieved Target Met Target Exceeded

Performance Measures	07/08 Actual	08/09 Target	08/09 Actual	09/10 Provisional	Status	09/10 Target	10/11 Target	Lead	Comments
Percentage of referrals to children's social care going on to initial assessment NI 68	43.6%	50.0%	53.2%	31.3%		55%	59%	Social Care (CB)	6576 referrals between 1 st April 2009 and 31 st March 2010, of which 2055 led to an IA – IP required
Hospital admissions caused by unintentional and deliberate injuries to children & young people NI 70 PSA 13	3.7%	Not Known	2.6%			To be set	To be set	DGOH (DM)	27 out of 726 emergency admissions during 2007/08; 16 out of 619 during 2008/09
Proportion of key-worker visits to children on CP Plan within 6 weeks (WM REG 3)	71.6%	To be confirmed	75.7%	83.6%		To be set	To be set	Social Care (CB)	West Mids Regional Indicator – 143 up-to-date out of 171 children on a CP Plan. New standards under development
Stability of placements of looked after children NI 62/63	12.9%	11%	10.6%	11.5%		11%	11%	Social Care (JP)	NI62 - In line with comparator groups – 70 children with 3 or more moves out of 610. NI 63 - 242 looked after for 2.5 years, 175 in current placement for 2 years or more. Improved position
Children who have experienced bullying NI 69 (Tell Us)	To be confirmed	To be confirmed	To be confirmed	TBC		To be confirmed	To be confirmed	Educ (IMG)	Performance has improved from Tell Us 3
Children who have run away from home or care overnight NI 71	Not Collected	Not Collected	5 out of 15	6 out of 15	N/A	8 out of 15	10 out of 15	S&RU (GT)	Self-assessment against 5 criteria, score out of 0-3
Percentage of Level 2 MAPPA cases reviewed at least every 12 weeks	To be confirmed	To be confirmed	To be confirmed	100%*		100%	100%	Police (AC)	Part of MAPPA national performance set - * to be confirmed

Inter-Agency Performance Data Set 2009/10

Key to Status Symbols ▼ Performance has declined → Performance has remained the same ▲ Performance has improved
▲ Target Not Achieved ● Target Met ★ Target Exceeded

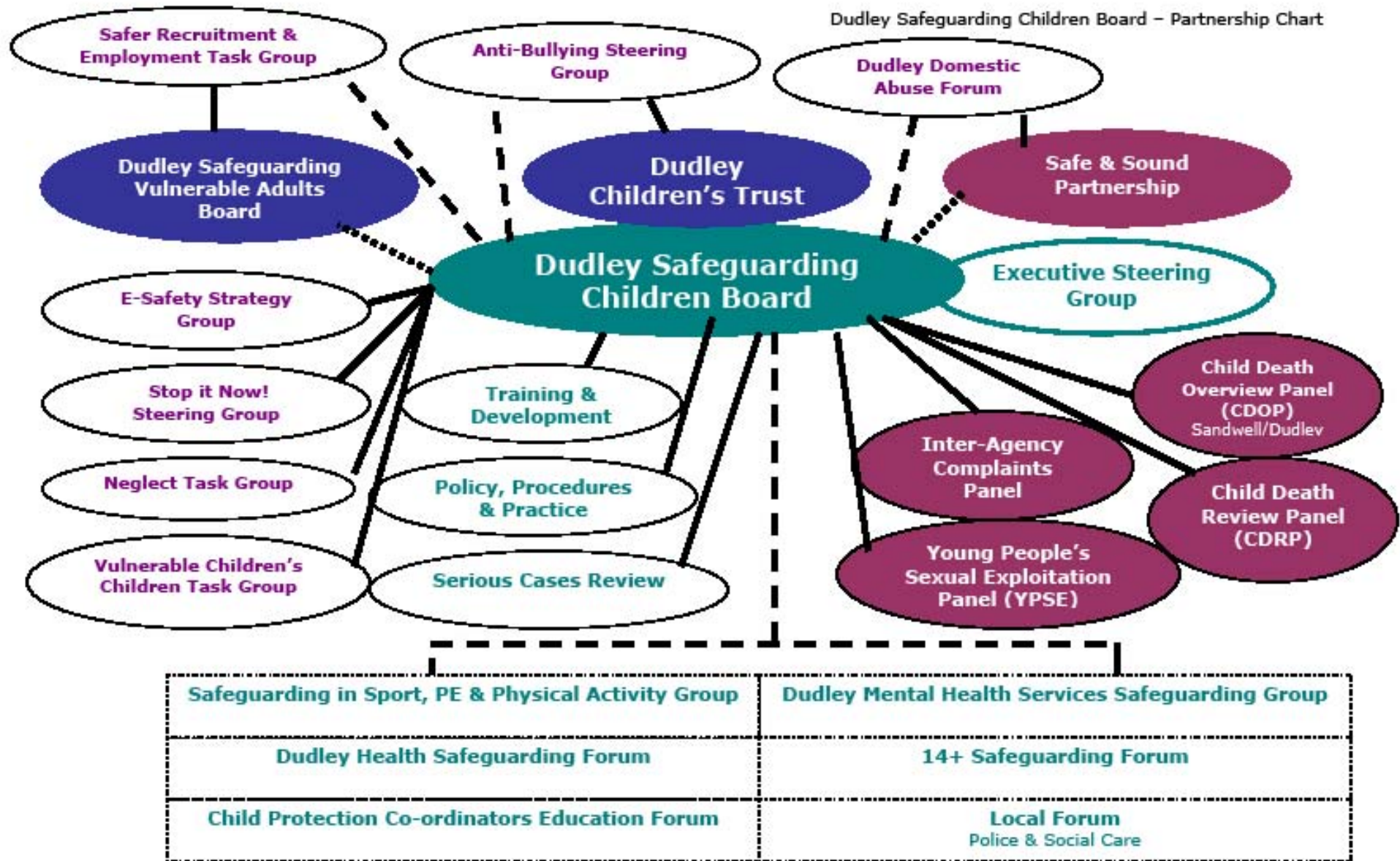
Indicators of Intelligence	07/08 Actual	08/09 Target	08/09 Actual	09/10 Provisional	Status	09/10 Target	10/11 Target	Lead	Comments
% of Child Protection Plans where the child was looked after	10.7%	4.0%	1.2%	7.6%	▲	4.0%	4.0%	S&RU (GT)	As at 31st of March 2010, 13 children in care were also subject to a CP Plan
Number of People Who Pose a Risk to Children notified to LA	Not collected	Not collected	Not collected	To be collected from 1.10.10	N/A	To be set	To be set	S&RU (GT)	PPRC system being explored using ICS
Number of children whose death has been categorised as preventable	Not collected	Not collected	0	1	N/A	N/A	N/A	S&RU (GT)	New statutory responsibility from 1 st April 2008 – out of 21 deaths reviewed 0 categorised as 'preventable; 1 as 'potentially preventable'; 20 as not preventable
No. of children involved (within household) in Domestic Abuse referrals reported to police	To be confirmed	To be confirmed	To be confirmed TBC	1048 (October – March) DART data	N/A			Police (AC)	On average 320 referrals (392's) are assessed by DART each month
Number of professionals who have attended DSCB Training (multi-agency)	1519	Not Set	1805	1883	N/A	To be agreed	To be agreed	S&RU (GT)	4% increase from previous year despite pressures on training team/budget. Additional 1093 attended Level 4 briefings
Number of cases audited on an inter-agency basis by DSCB partner agencies	10	40	10		▲	To be set	To be set	S&RU (GT)	Quality Management Reviews commenced – some single-agency audit within police, social care and PCT
Number of Strategy Meetings held in respect of concerns/allegations in respect of people who work with children	81	Not set	97	117	N/A	N/A	N/A	S&RU (GT)	20% rise in Strategy Meetings – new database being commissioned to improve data capture. Further analysis within LAD Annual report

Inter-Agency Performance Data Set 2009/10

Key to Status Symbols ▼ Performance has declined → Performance has remained the same ▲ Performance has improved
▲ Target Not Achieved ● Target Met ★ Target Exceeded

Indicators of Intelligence	07/08 Actual	08/09 Target	08/09 Actual	09/10 Provisional	Status	09/10 Target	10/11 Target	Lead	Comments
N ^o of children subject to a CP Plan for a 2nd or subsequent time (N1 65)	25	28	21	39	▼	To be set	To be set	S&RU (GT)	39 is the total for 1 st April 2009 to 31 st March 2010 – analysis required
Number of children subject to a Child Protection Plan due to Neglect	72 (53.7%)	Not set	104 (61.5%)	88 (51.5%)		N/A	N/A	S&RU (GT)	72 out of 134 at 31 st March 2008; 97 out of 169 at 31 st March 2009 88 out of 171 at 31 st March 2010
Number of new referrals from any agency to YPSE Panel	Not Collected	Not set	27	21		N/A	N/A	PCT (PO)	
Number of Initial Assessments per 10,000 population	191	Not set	333	310		To be set	To be set	S&RU (GT)	Figures showed a 74% increase in the number of initial assessments per 10,000 population between 07/08 and 08/09. Population of 0-17 in Dudley (66478 – 2007 Mid year estimate). This increase has fallen slightly in 2009/10.
Number of new CP Plans per 10,000 population for children aged 0-17	31	Not set	36	42		To be set	To be set	S&RU (GT)	Increase in the number of new CP Plans from 237 in 2008/09 to 280 in 2009/10. Increasing trend continuing - analysis required
Number of looked after children per 10,000 population	76.8	75	82	91	▼▲	73	70	Social Care (JP)	Looked after children per 10,000 population has continued to rise in Dudley and is well above the national average (54.1)

Dudley Safeguarding Children Board – Partnership Chart



Directorate of Children's Services, Dudley Primary Care Trust, West Midlands Police, Probation Service, Black Country Connexions, Dudley Group of Hospitals, Dudley Council for Voluntary Service, Mental Health Trust, Youth Offending Services, Schools & FE Colleges, West Midlands Fire Service, Community Safety, Directorate of Adults, Housing & Community Services, Barnardos, Directorate of Urban Environment, NSPCC, Action for Children, West Midlands Ambulance Service, Strategic Health Authority, Lay Advisors...

