

# KNOW YOUR COMMUNITY HOUSING TEAM BRIERLEY HILL



## Your **BRIERLEY HILL** Housing Team



**Karen Kibrya**  
Community Housing Team Manager

## Your **Community Housing** Officers



Kerry Cash



Debbie Churchill



Louise Nation



Steve Perry



Kerri Read



Lucy Taylor

Brockmoor • Bromley • Chapel Street • Dudley Fields • Kingswinford • Pensnett • Wall Heath

**WE ARE HERE TO HELP!**

Here are some useful numbers to get in touch

### **BRIERLEY HILL HOUSING TEAM**

• 01384 812599 • [BrierleyHillHEC@dudley.gov.uk](mailto:BrierleyHillHEC@dudley.gov.uk)

### **Community Housing Team Manager**

• 01384 812465

### **Dudley Council Plus**

• 0300 555 2345

### **To report a repair**

• 0300 555 8283

• <https://www.dudley.gov.uk/residents/housing/repairs-and-maintenance/repairs-and-improvements>

### **To pay your rent**

• 0300 555 7000

### **To discuss your rent account**

• 0300 555 0010 • [Incomenorth.dachs@dudley.gov.uk](mailto:Incomenorth.dachs@dudley.gov.uk)

### **To speak to the Leaseholder Team**

• 01384 815096

### **To make an application for housing**

• 01384 817760

• <https://www.dudley.gov.uk/residents/housing/housing-options/>

### **To report a problem with anti-social behaviour**

• 0300 555 2345

• <https://customer.dudley.gov.uk/antisocialbehaviour/begin/>

### **To make a complaint or compliment**

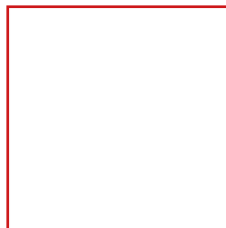
• 0300 555 2345

• <https://www.dudley.gov.uk/council-community/complaints/>

### **How to get Involved**

• 01384 815168 • [participation@dudley.gov.uk](mailto:participation@dudley.gov.uk)

# KNOW YOUR **COMMUNITY HOUSING TEAM** DUDLEY CENTRAL



## Your **DUDLEY CENTRAL** Housing Team



**Rob Wade**  
Community Housing Team Manager

## Your **Community Housing** Officers



Helen Bailey



Emma Fryer



Ghalam Gadair



Sharon Ghandam



Sabia Jamil



Phil Smith

Kates Hill North, • Wren's Nest • Dudley Central • Russells Hall • Woodsetton • Priority

**WE ARE HERE TO HELP!**

Here are some useful numbers to get in touch

### **DUDLEY CENTRAL HOUSING TEAM**

• 01384 817388 • [CentralDudleyHEC@dudley.gov.uk](mailto:CentralDudleyHEC@dudley.gov.uk)

### **Community Housing Team Manager**

• 01384 812466

### **Dudley Council Plus**

• 0300 555 2345

### **To report a repair**

• 0300 555 8283

• <https://www.dudley.gov.uk/residents/housing/repairs-and-maintenance/repairs-and-improvements>

### **To pay your rent**

• 0300 555 7000

### **To discuss your rent account**

• 0300 555 0010 • [Incomenorth.dachs@dudley.gov.uk](mailto:Incomenorth.dachs@dudley.gov.uk)

### **To speak to the Leaseholder Team**

• 01384 815096

### **To make an application for housing**

• 01384 817760

• <https://www.dudley.gov.uk/residents/housing/housing-options/>

### **To report a problem with anti-social behaviour**

• 0300 555 2345

• <https://customer.dudley.gov.uk/antisocialbehaviour/begin/>

### **To make a complaint or compliment**

• 0300 555 2345

• <https://www.dudley.gov.uk/council-community/complaints/>

### **How to get Involved**

• 01384 815168 • [participation@dudley.gov.uk](mailto:participation@dudley.gov.uk)



# KNOW YOUR COMMUNITY HOUSING TEAM HALESOWEN



## Your **HALESOWEN** Housing Team



**Lisa Watson**  
Community Housing Team Manager

## Your **Community Housing** Officers



Carl Barrett



Leanne Campbell



Clare Hartland



Suky Jagpal



Chris Moore



Rachel Pottrill



Luke Tilt



Fay Vaughan

Belle Vale • Halesowen North • Hasbury • Highfields • Pedmore • Windmill Hill • Wollescote

**WE ARE HERE TO HELP!**

Here are some useful numbers to get in touch

### **HALESOWEN HOUSING TEAM**

• 01384 811908 • [HalesowenHEC@dudley.gov.uk](mailto:HalesowenHEC@dudley.gov.uk)

### **Community Housing Team Manager**

• 01384 812434

### **Dudley Council Plus**

• 0300 555 2345

### **To report a repair**

• 0300 555 8283

• <https://www.dudley.gov.uk/residents/housing/repairs-and-maintenance/repairs-and-improvements>

### **To pay your rent**

• 0300 555 7000

### **To discuss your rent account**

• 0300 555 0010 • [Incomenorth.dachs@dudley.gov.uk](mailto:Incomenorth.dachs@dudley.gov.uk)

### **To speak to the Leaseholder Team**

• 01384 815096

### **To make an application for housing**

• 01384 817760

• <https://www.dudley.gov.uk/residents/housing/housing-options/>

### **To report a problem with anti-social behaviour**

• 0300 555 2345

• <https://customer.dudley.gov.uk/antisocialbehaviour/begin/>

### **To make a complaint or compliment**

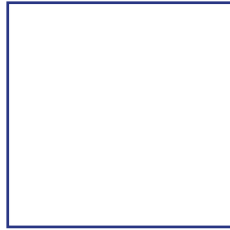
• 0300 555 2345

• <https://www.dudley.gov.uk/council-community/complaints/>

### **How to get Involved**

• 01384 815168 • [participation@dudley.gov.uk](mailto:participation@dudley.gov.uk)

# KNOW YOUR COMMUNITY HOUSING TEAM DUDLEY NORTH



## Your **DUDLEY NORTH** Housing Team

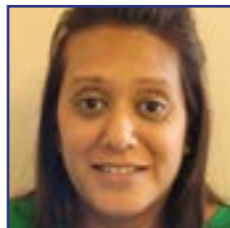


**Natasha Cash**  
Community Housing Team Manager

## Your **Community Housing** Officers



Michelle Crockett



Leena Dhokia



Lorenzo Divattimo



Joanne Hayes



Charlotte Partridge



Rukhsana Pervez



Louise Robson



Kindy Whitticase

Coseley • Gornal • Hurst Hill • Gornal Wood • Sedgley • Upper Gornal

**WE ARE HERE TO HELP!**

Here are some useful numbers to get in touch

### **DUDLEY NORTH HOUSING TEAM**

• 01384 812996 • [NorthDudleyHEC@dudley.gov.uk](mailto:NorthDudleyHEC@dudley.gov.uk)

### **Community Housing Team Manager**

• 01384 815147

### **Dudley Council Plus**

• 0300 555 2345

### **To report a repair**

• 0300 555 8283

• <https://www.dudley.gov.uk/residents/housing/repairs-and-maintenance/repairs-and-improvements>

### **To pay your rent**

• 0300 555 7000

### **To discuss your rent account**

• 0300 555 0010 • [Incomenorth.dachs@dudley.gov.uk](mailto:Incomenorth.dachs@dudley.gov.uk)

### **To speak to the Leaseholder Team**

• 01384 815096

### **To make an application for housing**

• 01384 817760

• <https://www.dudley.gov.uk/residents/housing/housing-options/>

### **To report a problem with anti-social behaviour**

• 0300 555 2345

• <https://customer.dudley.gov.uk/antisocialbehaviour/begin/>

### **To make a complaint or compliment**

• 0300 555 2345

• <https://www.dudley.gov.uk/council-community/complaints/>

### **How to get Involved**

• 01384 815168 • [participation@dudley.gov.uk](mailto:participation@dudley.gov.uk)



# KNOW YOUR COMMUNITY HOUSING TEAM DUDLEY SOUTH



## Your **DUDLEY SOUTH** Housing Team



**Matthew Cartwright**  
Community Housing Team Manager

## Your **Community Housing** Officers



Chantelle Cunningham



Tracey Hill



Claire Green



Anna Lawrence



Danielle Potter

Bowling Green • Buffery • Darby End • Kates Hill South • Lodge Farm • Netherton • Quarry Bank • Saltwells • Woodside

**WE ARE HERE TO HELP!**

Here are some useful numbers to get in touch

### **DUDLEY SOUTH HOUSING TEAM**

• 01384 812011 • [SouthDudleyHEC@dudley.gov.uk](mailto:SouthDudleyHEC@dudley.gov.uk)

### **Community Housing Team Manager**

• 01384 811905

### **Dudley Council Plus**

• 0300 555 2345

### **To report a repair**

• 0300 555 8283

• <https://www.dudley.gov.uk/residents/housing/repairs-and-maintenance/repairs-and-improvements>

### **To pay your rent**

• 0300 555 7000

### **To discuss your rent account**

• 0300 555 0010 • [Incomenorth.dachs@dudley.gov.uk](mailto:Incomenorth.dachs@dudley.gov.uk)

### **To speak to the Leaseholder Team**

• 01384 815096

### **To make an application for housing**

• 01384 817760

• <https://www.dudley.gov.uk/residents/housing/housing-options/>

### **To report a problem with anti-social behaviour**

• 0300 555 2345

• <https://customer.dudley.gov.uk/antisocialbehaviour/begin/>

### **To make a complaint or compliment**

• 0300 555 2345

• <https://www.dudley.gov.uk/council-community/complaints/>

### **How to get Involved**

• 01384 815168 • [participation@dudley.gov.uk](mailto:participation@dudley.gov.uk)



# KNOW YOUR COMMUNITY HOUSING TEAM STOURBRIDGE



## Your **STOURBRIDGE** Housing Team



**Kirstie Young**  
Community Housing Team Manager

## Your **Community Housing** Officers



Donna Ainslie



Kimberley Jones



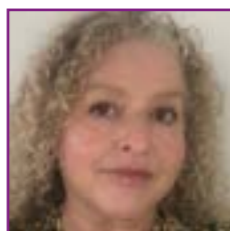
Sophie Kendrick



Dee McIntosh



Alison Morgan



Michelle Moriarty

Amblecote • Hawbush • Lye • Norton • Stourbridge Town • The Grange • Wollaston • Wordsley

**WE ARE HERE TO HELP!**

Here are some useful numbers to get in touch

### **STOURBRIDGE HOUSING TEAM**

• 01384 812009 • [StourbridgeHEC@dudley.gov.uk](mailto:StourbridgeHEC@dudley.gov.uk)

### **Community Housing Team Manager**

• 01384 812264

### **Dudley Council Plus**

• 0300 555 2345

### **To report a repair**

• 0300 555 8283

• <https://www.dudley.gov.uk/residents/housing/repairs-and-maintenance/repairs-and-improvements>

### **To pay your rent**

• 0300 555 7000

### **To discuss your rent account**

• 0300 555 0010 • [Incomenorth.dachs@dudley.gov.uk](mailto:Incomenorth.dachs@dudley.gov.uk)

### **To speak to the Leaseholder Team**

• 01384 815096

### **To make an application for housing**

• 01384 817760

• <https://www.dudley.gov.uk/residents/housing/housing-options/>

### **To report a problem with anti-social behaviour**

• 0300 555 2345

• <https://customer.dudley.gov.uk/antisocialbehaviour/begin/>

### **To make a complaint or compliment**

• 0300 555 2345

• <https://www.dudley.gov.uk/council-community/complaints/>

### **How to get Involved**

• 01384 815168 • [participation@dudley.gov.uk](mailto:participation@dudley.gov.uk)