

SIGNED COPY

**REPORT OF THE TRUSTEES AND
FINANCIAL STATEMENTS FOR THE YEAR ENDED
31 OCTOBER 2009
FOR
CURE LEUKAEMIA**

J W Hinks
Chartered Accountants
and Registered Auditors
19 Highfield Road
Edgbaston
Birmingham
B15 3BH

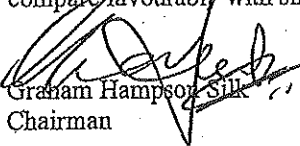
CURE LEUKAEMIA

CONTENTS OF THE FINANCIAL STATEMENTS
FOR THE YEAR ENDED 31 OCTOBER 2009

	Page
Chairman's Report	1
Report of the Trustees	2 to 8
Report of the Independent Auditors	9 to 10
Statement of Financial Activities	11
Balance Sheet	12
Notes to the Financial Statements	13 to 19

CHAIRMAN'S REPORT
FOR THE YEAR ENDED 31 OCTOBER 2009

It has been another incredible year for the charity. Yes, times are difficult but I have been both amazed and touched by the generosity and commitment of both our individual and corporate supporters. Their support has enabled us to meet all of our financial commitments during the year for the research programmes and the purchase of capital items needed to continue with the development of the Leukaemia Centre at University Hospital Birmingham as a world class facility which continues to compare favourably with similar centres in Europe and the USA.


Graham Hampson Silk
Chairman

14 January 2010

CURE LEUKAEMIA

REPORT OF THE TRUSTEES
FOR THE YEAR ENDED 31 OCTOBER 2009

The trustees who are also directors of the charity for the purposes of the Companies Act 2006, present their report with the financial statements of the charity for the year ended 31 October 2009. The trustees have adopted the provisions of the Statement of Recommended Practice (SORP) 'Accounting and Reporting by Charities' issued in March 2005.

REFERENCE AND ADMINISTRATIVE DETAILS

Registered Company number
4569174 (England and Wales)

Registered Charity number
1100154

Registered office
27 Birmingham Street
Oldbury
West Midlands
B69 4EZ

Trustees

A R Rudell		- appointed 6.1.10
Prof. C F Craddock		
G H Silk	Chairman	
M A Woolley		- resigned 10.11.08
G Smith		
Dr M A Cook		
A J Bartlett		
R J Black		
Dr F J Clark		- resigned 8.7.09
M Shaw	Treasurer	
M W Hargreaves		
I Allen		- appointed 16.1.09
Dr J A Murray		- appointed 12.3.09

Prof. C F Craddock, Dr M A Cook, Mr M A Shaw, Dr J A Murray and Mr A R Rudell will retire by rotation at the annual general meeting.

Company Secretary
K A H Jones

Auditors
J W Hinks
Chartered Accountants
and Registered Auditors
19 Highfield Road
Edgbaston
Birmingham
B15 3BH

Solicitors
Silks
Barclays Bank Chambers
27 Birmingham Street
Oldbury
West Midlands
B69 4EZ

Bankers
Barclays Bank
West Bromwich
West Midlands

REPORT OF THE TRUSTEES
FOR THE YEAR ENDED 31 OCTOBER 2009

EVENTS SINCE THE END OF THE YEAR

Information relating to events since the end of the year is given in the notes to the financial statements.

STRUCTURE, GOVERNANCE AND MANAGEMENT

Governing document

Cure Leukaemia is a company limited by guarantee (registered in England and Wales number 1100154) incorporated on 22 October 2002 and was given registered charitable status on 20 October 2004 under the Charities Act 1993 (charity registration number 4569174). The governing documents of the company are its memorandum and articles of association.

Recruitment and appointment of new trustees

Appointments are made to the board of trustees primarily with a view to enhancing the management expertise of the charity. A new trustee will be supplied with copies of the charity's memorandum and articles of association, prior minutes and accounts, an organisation chart and staff handbook.

The appointment of trustees is undertaken by application and approval by the management committee. The election of the management committee and elections to officers of the charity take place at each Annual General Meeting.

All trustees give their time voluntarily and receive no benefits from the charity. Any expenses reclaimed from the charity are set out in the notes to the financial statements.

Induction and training of new trustees

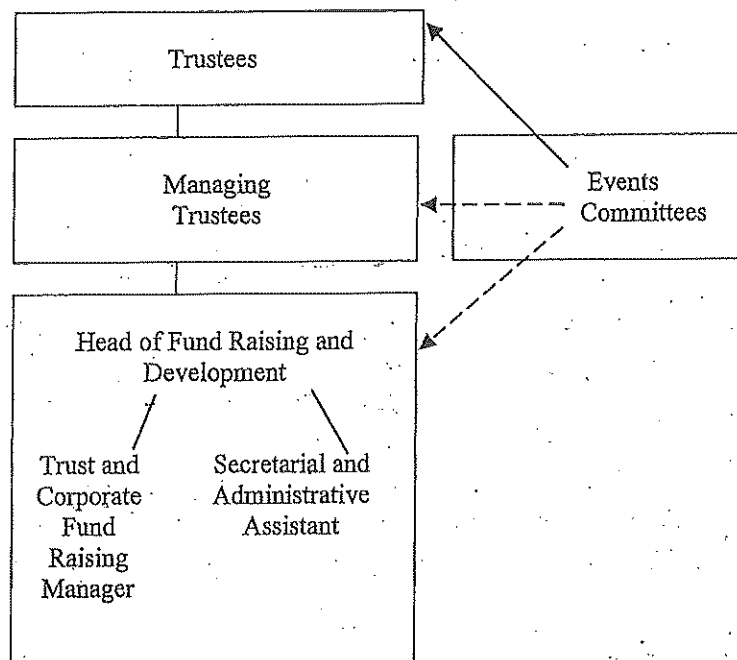
Trustees are involved in ongoing general and specific training according to their areas of responsibility.

Organisational structure and decision making

The directors of the charitable company are its trustees for the purposes of charity law.

The charitable company is governed by a board of directors/trustees. The responsibility for the day to day operation of the charitable company lies with the staff team who are employed by the charitable company and are responsible to the directors/trustees.

The management committee of directors/trustees meet regularly, retain full and effective control over the charitable company and monitor the executive managers. Being non-executive directors they bring an independent judgement to bear on issues of strategy, performance and resources, including key appointments and standards of conduct.



Review of relationships

The charity values its continuing partnerships with the University Hospitals Birmingham NHS Foundation Trust (formerly the Queen Elizabeth Hospital Birmingham Trust) and the University of Birmingham and appreciates all of the help and support they have given to the charity.

Risk management

The trustees have a duty to identify and review the risks to which the charity is exposed and to ensure appropriate controls are in place to provide reasonable assurance against fraud and error.

OBJECTIVES AND ACTIVITIES

Objectives and aims

Purpose and aims

Cure Leukaemia's objects and principal activities are to help provide relief to persons suffering from leukaemia and to undertake research into the causes, prevention and treatment of leukaemia and to publish the useful results of such research.

Ensuring our work delivers our aims

We review our aims, objectives and activities each year. This review looks at what we achieved and the outcomes of our work in the previous 12 months. The review looks at the success of each key activity and the benefits they have brought to those groups of people we are set up to help. The review also helps us to ensure that our aim, objectives and activities remained focused on our stated purposes.

We have referred to the guidance contained in the Charity Commission's general guidance on public benefit when reviewing our aims and objectives and in planning our future activities. In particular, the trustees consider how planned activities will contribute to the aims and objectives they have set.

The focus of our work

The focus of the charity continues to be the provision of help to provide relief to persons suffering from leukaemia and to undertake research into the causes, prevention and treatment of leukaemia and to publish the useful results of such research.

In order to achieve its objects the charity has continued to adopt the following strategic objectives.

1. To fund the provision of new therapies and treatments for leukaemia patients across the West Midlands.
2. To enable scientists and clinicians to work even closer together to develop new treatments for leukaemia.
3. To provide an information and resource centre for leukaemia.
4. To provide support groups for leukaemia patients and their families.
5. To establish an endowment to fund this work over the next 10 years.

ACHIEVEMENT AND PERFORMANCE

Developments, activities and achievements during the year

How our activities deliver public benefit

Our main activities and who we try to help are described below. All of our charitable activities focus on our ability to help provide relief to persons suffering from leukaemia and to undertake research into the causes, prevention and treatment of leukaemia through the use of the facilities available to the charity.

Summary of main achievements during year

It is an undeniable achievement to report that we were able to achieve the following during the year.

1. Fund 15 research nurse posts at hospitals across the Midlands.
2. Contribute towards the provision of £100,000 worth of air conditioning for the benefit of patients, doctors and nurses at clinical treatment rooms at the Leukaemia Centre at University Hospital Birmingham.
3. Attract £13 million of pro bono drugs for clinical trials and attract world-firsts in trials of new drugs and treatments taking place at the Leukaemia Centre at University Hospital Birmingham.

Highlights of the year

It is difficult in a few words to summarise even the highlights of the year. The gathering of 600 patients and staff in the Great Hall of the University of Birmingham to celebrate our 1,500 bone marrow transplant (the second highest number in the UK) on a beautiful spring day in April was a proud and emotional moment for us all.

This year's Cure Leukaemia fun run, held in the pouring rain, also had its moments of high emotion. Where do all of those wonderful runners, aged from 2 years of age to 82 years of age, come from together with all of the stewards and marshalls and so forth? Why do they get wet for 5 hours? Is it because they know that what we are raising money for what actually matters?

There are many other memorable occasions that we should like to make proper mention of. Among these are the Christmas ball, the fun run, the walk, the art auction, the corporate ski challenge and the Indian Summer 20/20 at Harborne to name but a few but space does not allow here.

Support from patrons

The charity has had huge support from patrons during the year.

Kay White won a community fundraising award from the High Sheriff of Birmingham, Paul Bassi, as well as taking part in an incredible 500 kilometre trek along the Skeleton Coast of Africa which took 4 weeks to complete and raised £10,000 as well as all of her work for our Redventure Treks.

Ashley Giles had a very successful celebrity golf day and helped Cure Leukaemia secure a happy partnership with Warwickshire County Cricket Club. With his wife, Stine, he organised and held a Moroccan themed party at his home in September and they both played a major role in Cure Leukaemia's fabulous Fashion Extravaganza in October held at Harvey Nicholls in Birmingham's Mailbox.

We should also like to pay tribute to the television celebrity, Adrian Chiles, who, despite being seen on television for 6 nights or so per week, found time to bring a film crew to the Leukaemia Centre in October to produce a DVD about the work of the centre which will be a huge help in promoting and developing the fundraising of the charity both to the general public and the corporate and trust sector. One of Cure Leukaemia's key objectives during the year ended 31 October 2010 will be to widen the base of our support in all sectors of fundraising. We realise we cannot just keep going back to the same loyal and generous supporters for help indefinitely.

Thanks to trustees and staff of Cure Leukaemia

We must pay tribute to the excellent band of fellow trustees that so generously give of their time, talent and expertise (to say nothing of the drain on their pockets) in support of the charity. Our achievements would not have been possible without their contribution.

CURE LEUKAEMIA

REPORT OF THE TRUSTEES FOR THE YEAR ENDED 31 OCTOBER 2009

The same sincere thanks go to the staff and volunteers of Cure Leukaemia. Despite half of the staff developing a penchant for developing babies during the year, a head of fundraising who spends 3 months in hospital and the bedding in of a new trust fundraising we have survived these crises and continued to go forward.

Even with all of these factors, we are lucky to have a committed team dedicated to funding the goals of the charity and this is well demonstrated in the quality and scope covered by the events of which we are so justifiably proud.

FINANCIAL REVIEW

Reserves policy

The charity would like to maintain unrestricted funds not committed or invested in tangible fixed assets, which are the free reserves of the charity, at a level which equates to between 6 and 12 months unrestricted expenditure. This provides sufficient funds to cover management and administration and support costs. This aim has to be evaluated against the objects of the charity and their fulfilment.

Financial position

The Statement of Financial Activities shows gross income of £502,400 (2008 - £573,792) and expenditure of £578,242 (2008 - £481,987) for the year ended 31 October 2009.

The charity's income and expenditure for the year ended 31 October 2005 to year ended 31 October 2009 is summarised as follows.

	2005	2006	2007	2008	2009
	£	£	£	£	£
Donations	113,316	163,224	110,666	68,029	96,620
Legacies	5,000	-	-	5,000	40,000
Grants/trusts	2,200	-	120,894	107,068	20,000
Investment income	121	3,034	10,879	17,678	9,675
Fundraising events(net of cost of events)	<u>3,005</u>	<u>199,209</u>	<u>180,003</u>	<u>220,216</u>	<u>147,133</u>
Total income(net of cost of events)	123,642	365,467	422,442	417,991	313,428
Other costs of fundraising	<u>58,640</u>	<u>57,050</u>	<u>56,768</u>	<u>82,067</u>	<u>86,215</u>
Net income	65,002	308,417	305,674	335,924	227,213
Governance and support costs	<u>31,873</u>	<u>72,413</u>	<u>39,243</u>	<u>44,695</u>	<u>72,483</u>
Net monies raised	33,129	236,004	326,431	291,229	154,730
Used for charitable purposes	<u>4,518</u>	<u>185,504</u>	<u>87,607</u>	<u>199,424</u>	<u>230,572</u>
Surplus / (deficit) in year	<u>28,611</u>	<u>52,500</u>	<u>238,824</u>	<u>91,805</u>	<u>(75,842)</u>
Balance carried forward	<u>42,365</u>	<u>94,865</u>	<u>333,689</u>	<u>425,494</u>	<u>349,652</u>

Key ratios

Fundraising costs to total income(net of cost of events)	47.4%	15.6%	13.4%	19.6%	27.5%
Governance and support costs to net income	49.0%	23.5%	10.7%	13.3%	31.9%

The reserves are primarily to cover the development and future running expenses of all aspects of the charity and the present level of funding is considered to be adequate to support the continuation of our existing activities.

FUTURE DEVELOPMENTS

Looking forward to 2010, we can say that obtaining funding and support will continue to be a real challenge for us as it will be for the whole of the Third Sector due to the continuing difficult state of the economy.

In addition, this charity has to make plans for the replacement of our head of fundraising, John Latham, who retires at the end of 2009.

John Latham has been instrumental in the success of the charity during the last 5 years. Cure Leukaemia must make plans to ensure that the charity has the right strategy and the right people in place to take it forward successfully. It is our duty to ensure the great success of the charity during its first 5 years of existence continues in the years ahead. It is a task with which we have total focus.

Thank you to all supporters

We should like to say a sincere thank you to everyone connected with Cure Leukaemia, in whatever capacity, for your support during the year. We hope we have done enough to ensure that your assistance continues during 2010 and we continue to plan to achieve raising funds to find a cure for leukaemia. Never doubt that your support is not appreciated or taken for granted.

LIABILITY OF THE MEMBERS

No director/trustee has any beneficial interest in the charitable company. The liability of the members is limited to their guarantee. In the event of the company being wound up during the period of their membership members undertake to contribute such amount as may be required not exceeding £10.

STATEMENT OF TRUSTEES RESPONSIBILITIES

The trustees (who are also the directors of Cure Leukaemia for the purposes of company law) are responsible for preparing the financial statements in accordance with applicable law and United Kingdom Generally Accepted Accounting Practice.

Company law requires the trustees to prepare financial statements for each financial year which give a true and fair view of the state of affairs of the charitable company and of the incoming resources and application of resources, including the income and expenditure, of the charitable company for that period. In preparing those financial statements, the trustees are required to

- select suitable accounting policies and then apply them consistently;
- observe the methods and principles in the Charity SORP;
- make judgements and estimates that are reasonable and prudent;
- prepare the financial statements on the going concern basis unless it is inappropriate to presume that the charitable company will continue in business.

The trustees are responsible for keeping proper accounting records which disclose with reasonable accuracy at any time the financial position of the charitable company and to enable them to ensure that the financial statements comply with the Companies Act 2006. They are also responsible for safeguarding the assets of the charitable company and hence for taking reasonable steps for the prevention and detection of fraud and other irregularities.

STATEMENT AS TO DISCLOSURE OF INFORMATION TO AUDITORS

So far as the trustees are aware, there is no relevant information (as defined by Section 418 of the Companies Act 2006) of which the charitable company's auditors are unaware, and each trustee has taken all the steps that they ought to have taken as a trustee in order to make them aware of any audit information and to establish that the charitable company's auditors are aware of that information.

CURE LEUKAEMIA

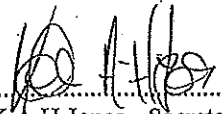
REPORT OF THE TRUSTEES
FOR THE YEAR ENDED 31 OCTOBER 2009

AUDITORS

The auditors, J W Hinks, will be proposed for re-appointment at the forthcoming Annual General Meeting.

This report has been prepared in accordance with the special provisions of Part 15 of the Companies Act 2006 relating to small companies.

ON BEHALF OF THE BOARD:


.....
K A H Jones - Secretary

14 January 2010

REPORT OF THE INDEPENDENT AUDITORS TO THE MEMBERS OF
CURE LEUKAEMIA

We have audited the financial statements of Cure Leukaemia for the year ended 31 October 2009 on pages eleven to nineteen. The financial statements have been prepared under the accounting policies set out therein and the requirements of the Financial Reporting Standard for Smaller Entities (effective April 2008).

This report is made solely to the charitable company's members, as a body, in accordance with Section 495 and 496 of the Companies Act 2006. Our audit work has been undertaken so that we might state to the charitable company's trustees those matters we are required to state to them in an auditors' report and for no other purpose. To the fullest extent permitted by law, we do not accept or assume responsibility to anyone other than the charitable company and the charitable company's trustees as a body, for our audit work, for this report, or for the opinions we have formed.

Respective responsibilities of trustees and auditors

The trustees' (who are also the directors of the charitable company for the purposes of company law) responsibilities for preparing the Annual Report and the financial statements in accordance with applicable law and United Kingdom Accounting Standards (United Kingdom Generally Accepted Accounting Practice) and for being satisfied that the financial statements give a true and fair view are set out on page seven.

Our responsibility is to audit the financial statements in accordance with relevant legal and regulatory requirements and International Standards on Auditing (UK and Ireland).

We report to you our opinion as to whether the financial statements give a true and fair view, are properly prepared in accordance with United Kingdom Generally Accepted Accounting Practice and are prepared in accordance with the Companies Act 2006. We also report to you whether, in our opinion the information given in the Report of the Trustees is consistent with those financial statements.

In addition, we report to you if, in our opinion, the charitable company has not kept adequate accounting records, if the charitable company's financial statements are not in agreement with the accounting records and returns, if we have not received all the information and explanations we require for our audit, or if certain disclosures of trustees' remuneration specified by law are not made.

We read other information contained in the Annual Report, and consider whether it is consistent with the audited financial statements. This other information comprises only the Report of the Trustees and the Chairman's Report. We consider the implications for our report if we become aware of any apparent misstatements or material inconsistencies with the financial statements. Our responsibilities do not extend to any other information.

Basis of audit opinion

We conducted our audit in accordance with International Standards on Auditing (UK and Ireland) issued by the Auditing Practices Board. An audit includes examination, on a test basis, of evidence relevant to the amounts and disclosures in the financial statements. It also includes an assessment of the significant estimates and judgements made by the trustees in the preparation of the financial statements, and of whether the accounting policies are appropriate to the charitable company's circumstances, consistently applied and adequately disclosed.

We planned and performed our audit so as to obtain all the information and explanations which we considered necessary in order to provide us with sufficient evidence to give reasonable assurance that the financial statements are free from material misstatement, whether caused by fraud or other irregularity or error. In forming our opinion we also evaluated the overall adequacy of the presentation of information in the financial statements.

REPORT OF THE INDEPENDENT AUDITORS TO THE MEMBERS OF
CURE LEUKAEMIA

Opinion

In our opinion:

- the financial statements give a true and fair view of the state of the charitable company's affairs as at 31 October 2009 and of its incoming resources and application of resources, including its income and expenditure, for the year then ended;
- the financial statements have been properly prepared in accordance with United Kingdom Generally Accepted Accounting Practice applicable to Smaller Entities;
- the financial statements have been prepared in accordance with the Companies Act 2006; and
- the information given in the Report of the Trustees is consistent with the financial statements.



P O H Jones (Senior Statutory Auditor)
for and on behalf of J W Hinks
Chartered Accountants
and Registered Auditors
19 Highfield Road
Edgbaston
Birmingham
B15 3BH

14 January 2010

STATEMENT OF FINANCIAL ACTIVITIES
FOR THE YEAR ENDED 31 OCTOBER 2009

	Notes	Unrestricted funds £	Restricted funds £	2009 Total funds £	2008 Total funds £
INCOMING RESOURCES					
Incoming resources from generated funds					
Voluntary income	2	136,370	250	136,620	180,097
Activities for generating funds	3	336,105	-	336,105	376,017
Investment income	4	9,675	-	9,675	17,678
Incoming resources from charitable activities					
Grants receivable	5	-	20,000	20,000	-
Total incoming resources		482,150	20,250	502,400	573,792
RESOURCES EXPENDED					
Costs of generating funds					
Costs of generating voluntary income	6	8,813	-	8,813	9,416
Fundraising costs	7	265,374	1,000	266,374	228,452
Charitable activities					
Donations and charitable gifts	8	210,322	20,250	230,572	199,424
Wages		47,885	-	47,885	28,308
Insurance		704	-	704	884
Postage and stationery		5,616	-	5,616	2,318
Sundries		2,296	-	2,296	885
Travel expenses		4,235	-	4,235	2,266
Bank charges		1,077	-	1,077	980
Irrecoverable VAT		2,199	-	2,199	3,406
Subscriptions		690	-	690	107
Staff training		291	-	291	461
Governance costs	10	7,490	-	7,490	5,080
Total resources expended		556,992	21,250	578,242	481,987
NET INCOMING/(OUTGOING) RESOURCES		(74,842)	(1,000)	(75,842)	91,805
RECONCILIATION OF FUNDS					
Total funds brought forward		424,494	1,000	425,494	333,689
TOTAL FUNDS CARRIED FORWARD		349,652	-	349,652	425,494

The notes form part of these financial statements

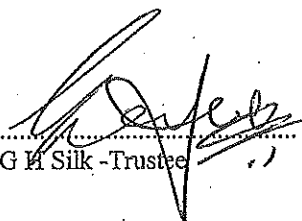
CURE LEUKAEMIA

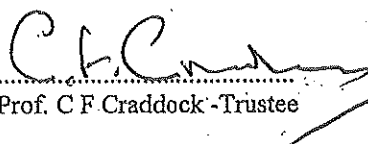
BALANCE SHEET
AT 31 OCTOBER 2009

	Notes	Unrestricted funds £	Restricted funds £	2009 Total funds £	2008 Total funds £
CURRENT ASSETS					
Debtors: amounts falling due within one year	14	51,279	-	51,279	72,925
Cash at bank	15	<u>320,006</u>	-	<u>320,006</u>	<u>405,635</u>
		371,285	-	371,285	478,560
CREDITORS					
Amounts falling due within one year	16	(21,633)	-	(21,633)	(53,066)
NET CURRENT ASSETS		<u>349,652</u>	-	<u>349,652</u>	<u>425,494</u>
TOTAL ASSETS LESS CURRENT LIABILITIES		<u>349,652</u>	-	<u>349,652</u>	<u>425,494</u>
NET ASSETS		<u>349,652</u>	-	<u>349,652</u>	<u>425,494</u>
FUNDS					
Unrestricted funds	17			349,652	424,494
Restricted funds				-	1,000
TOTAL FUNDS				<u>349,652</u>	<u>425,494</u>

These financial statements have been prepared in accordance with the special provisions of Part 15 of the Companies Act 2006 relating to small charitable companies and with the Financial Reporting Standard for Smaller Entities (effective April 2008).

The financial statements were approved by the Board of Trustees on 14 January 2010 and were signed on its behalf by:


G H Silk - Trustee


Prof. C F Craddock - Trustee

The notes form part of these financial statements

1. ACCOUNTING POLICIES

Accounting convention

The financial statements have been prepared under the historical cost convention, and in accordance with the Financial Reporting Standards for Smaller Entities (effective April 2008), the Companies Act 2006 and the requirements of the Statement of Recommended Practice, Accounting and Reporting by Charities.

Incoming resources

All incoming resources are included in the Statement of Financial Activities when the charity is legally entitled to the income and the amount can be quantified with reasonable accuracy. For legacies, entitlement is the earlier of the charity being notified of an impending distribution or the legacy being received.

Donated services and facilities are included at the value to the charity where this can be quantified and a third party is bearing the cost. No amounts are included in the financial statements for services donated by volunteers.

Grants, including grants for the purchase of fixed assets, are recognised in full in the Statement of Financial Activities in the year in which they are receivable.

Resources expended

All expenditure is accounted for on an accruals basis and has been classified under headings that aggregate all costs related to the category. Where costs cannot be directly attributed to particular headings they have been allocated to activities using estimates deemed appropriate by the trustees on a basis consistent with use of the resources.

Fundraising costs are those incurred in seeking voluntary contributions and do not include the costs of disseminating information in support of the charitable activities.

Support costs are those costs incurred directly in support of expenditure on the objects of the charity.

Allocation and apportionment of costs

Expenditure is accounted for on an accruals basis and has been classified under headings that aggregate all cost related to the category. Where costs cannot be directly attributed to particular headings they have been allocated to activities on a basis consistent with the use of resources.

Taxation

The charity is exempt from corporation tax on its charitable activities.

Fund accounting

General funds are unrestricted funds which are available for use at the discretion of the trustees in furtherance of the general objectives of the charity and which have not been designated for other purposes.

Restricted funds are funds which are to be used in accordance with specific restrictions imposed by donors or which have been raised by the charity for particular purposes. The cost of raising and administering such funds are charged against the specific fund. The aim and use of each restricted fund is set out in the notes to the financial statements.

Company status

The charity is a company limited by guarantee. The members of the the company are the trustees named on the company information page. In the event of the charity being wound up the liability in respect of the guarantee is limited to £10 per member of the charity.

NOTES TO THE FINANCIAL STATEMENTS - CONTINUED
FOR THE YEAR ENDED 31 OCTOBER 2009

2. VOLUNTARY INCOME

	2009	2008
	£	£
Donations and gifts	96,620	180,097
Legacies	40,000	-
	<u>136,620</u>	<u>180,097</u>

Donations and giftsDonations

During the year ended 31 October 2009 the charity received the following donations from individuals and organisations in excess of £10,000.

	2009	2008
	£	£
<u>Donor/Organiser</u>		
A Haden	-	15,000
Bob Brolly and friends	26,000	-
Chugai Pharma UK Limited	15,000	-
Eveson Trust	-	30,000
	<u>41,000</u>	<u>45,000</u>

Legacies

During the year ended 31 October 2009 the following legacy income in excess of £10,000 was received by the charity.

	2009	2008
	£	£
A Toobey	30,000	-
	<u>30,000</u>	<u>-</u>

3. ACTIVITIES FOR GENERATING FUNDS

	2009	2008
	£	£
Fundraising events	<u>336,105</u>	<u>376,017</u>

4. INVESTMENT INCOME

	2009	2008
	£	£
Deposit account interest	8,484	15,312
Loan interest received	1,191	2,366
	<u>9,675</u>	<u>17,678</u>

5. INCOMING RESOURCES FROM CHARITABLE ACTIVITIES

	Activity	2009	2008
		£	£
Grants	Grants receivable	<u>20,000</u>	<u>-</u>

NOTES TO THE FINANCIAL STATEMENTS - CONTINUED
FOR THE YEAR ENDED 31 OCTOBER 2009

5. INCOMING RESOURCES FROM CHARITABLE ACTIVITIES - continued

Grants received, included in the above, are as follows:

	2009 £	2008 £
G J W Turner Trust - restricted Leukaemia Research Programme Fund	5,000	-
The Blakemore Foundation - restricted Leukaemia Research Programme Fund	5,000	-
The 29th May 1961 Charitable Trust - restricted Research Nurse Fund	<u>10,000</u>	-
	<u>20,000</u>	<u>-</u>

6. COSTS OF GENERATING VOLUNTARY INCOME

	2009 £	2008 £
Advertising	1,605	4,430
Website development	2,036	4,986
Other voluntary income costs	<u>5,172</u>	-
	<u>8,813</u>	<u>9,416</u>

A review of the allocation of costs of generating voluntary income and fundraising costs has been undertaken during the year ended 31 October 2009 and as a result the total cost of generating voluntary income and fundraising costs have been restated for the year ended 31 October 2008. The total net assets of the charity as at 31 October 2008 remain unchanged.

7. FUNDRAISING COSTS

	2009 £	2008 £
Event costs	188,972	155,801
Staff costs	<u>77,402</u>	<u>72,651</u>
	<u>266,374</u>	<u>228,452</u>

A review of the allocation of costs of generating voluntary income and fundraising costs has been undertaken during the year ended 31 October 2009 and as a result the total cost of generating voluntary income and fundraising costs have been restated for the year ended 31 October 2008. The total net assets of the charity as at 31 October 2008 remain unchanged.

8. CHARITABLE ACTIVITIES COSTS

	Direct costs	Support costs (See note 9)	Totals
	£	£	£
Donations and charitable gifts	230,572	-	230,572
Wages	-	47,885	47,885
Insurance	-	704	704
Postage and stationery	-	5,616	5,616
Sundries	-	2,296	2,296
Travel expenses	-	4,235	4,235
Bank charges	-	1,077	1,077
Irrecoverable VAT	-	2,199	2,199
Subscriptions	-	690	690
Staff training	-	291	291
	<u>230,572</u>	<u>64,993</u>	<u>295,565</u>

Donations and charitable gifts

During the year ended 31 October 2009 the charity made the following donations in excess of £10,000 in order to contribute towards the funding of leukaemia research programmes and towards the care of patients suffering from leukaemia..

	2009	2008
Recipient	£	£
Mid Staffordshire NHS Foundation Trust	19,835	-
South Warwickshire General Hospitals NHS Trust	20,000	-
The Dudley Group of Hospitals NHS Foundation Trust	21,703	-
University Hospital of North Staffordshire NHS Trust	-	40,000
University of Birmingham	150,000	101,212
Worcestershire Acute Hospitals NHS Trust	-	20,000
	<u>211,538</u>	<u>161,212</u>

9. SUPPORT COSTS

Support costs are those costs that have been incurred in order to further the continued development of the charitable activities.

10. GOVERNANCE COSTS

	2009	2008
	£	£
Legal fees	2,250	-
Auditors' remuneration	4,720	3,350
Auditors' remuneration for non-audit work	520	1,730
	<u>7,490</u>	<u>5,080</u>

11. NET INCOMING/(OUTGOING) RESOURCES

Net resources are stated after charging/(crediting):

	2009	2008
	£	£
Auditors' remuneration	<u>4,720</u>	<u>3,350</u>

12. TRUSTEES' REMUNERATION AND BENEFITS

There were no trustees' remuneration or other benefits for the year ended 31 October 2009 nor for the year ended 31 October 2008.

Trustees' Expenses

There were no trustees' expenses paid for the year ended 31 October 2009 nor for the year ended 31 October 2008.

13. STAFF COSTS

	2009	2008
	£	£
Wages and salaries	114,046	91,888
Social security costs	<u>11,241</u>	<u>9,071</u>
	<u>125,287</u>	<u>100,959</u>

The average monthly number of employees during the year was as follows:

	2009	2008
Administration	<u>5</u>	<u>4</u>

There were no employees whose emoluments for tax purposes amounted to over £60,000.

14. DEBTORS: AMOUNTS FALLING DUE WITHIN ONE YEAR

	2009	2008
	£	£
Other debtors	43,835	67,350
Gift Aid recoverable	<u>7,444</u>	<u>5,575</u>
	<u>51,279</u>	<u>72,925</u>

15. CASH AT BANK

	General Fund	2009 Total funds	2008 Total funds
	£	£	£
Bank current account	168,041	168,041	53,673
Bank deposit account	1,965	1,965	1,962
Bank treasury deposit	<u>150,000</u>	<u>150,000</u>	<u>350,000</u>
Total	<u>320,006</u>	<u>320,006</u>	<u>405,635</u>

NOTES TO THE FINANCIAL STATEMENTS - CONTINUED
FOR THE YEAR ENDED 31 OCTOBER 2009

16. CREDITORS: AMOUNTS FALLING DUE WITHIN ONE YEAR

	2009	2008
	£	£
Trade creditors	3,391	32,982
Social security and other taxes	-	2,891
Other creditors	13,422	13,593
Accrued expenses	<u>4,820</u>	<u>3,600</u>
	<u>21,633</u>	<u>53,066</u>

17. MOVEMENT IN FUNDS

	At 1.11.08	Net movement in funds	At 31.10.09
	£	£	£
Unrestricted funds			
General Fund	424,494	(74,842)	349,652
Restricted funds			
Christmas Ball Fund	1,000	(1,000)	-
	<u>425,494</u>	<u>(75,842)</u>	<u>349,652</u>

Net movement in funds, included in the above are as follows:

	Incoming resources	Resources expended	Movement in funds
	£	£	£
Unrestricted funds			
General Fund	482,150	(556,992)	(74,842)
Restricted funds			
Christmas Ball Fund	-	(1,000)	(1,000)
Leukaemia Research Programme Fund	10,250	(10,250)	-
Research Nurse Fund	<u>10,000</u>	<u>(10,000)</u>	<u>-</u>
	20,250	(21,250)	(1,000)
	<u>502,400</u>	<u>(578,242)</u>	<u>(75,842)</u>

17. MOVEMENT IN FUNDS - continued

Purpose of funds

Unrestricted - General Fund

The General Fund represents the free funds of the charity that are not designated for particular purposes.

Restricted - Christmas Ball Fund

The Christmas Ball Fund represents income which was donated to the charity specifically for the running costs of the Cure Leukaemia 2008 Christmas Ball.

The Christmas Ball Fund was expended in full during the year ended 31 October 2009.

Restricted - Leukaemia Research Programme Fund

The Leukaemia Research Programme Fund represents a fund established by the charity to help contribute towards the financing of leukaemia research programmes undertaken by University Hospital Birmingham.

Restricted - Research Nurse Fund

The Research Nurse Fund represents a fund established by the charity to help contribute towards the financing of a research nurse employed by South Warwickshire General Hospitals NHS Trust.

18. RELATED PARTY DISCLOSURES

Amount due from the Geoff Thomas Foundation

The charity has a close relationship with the Geoff Thomas Foundation, a registered charity (registered charity number 5976761) which has similar objects to those of Cure Leukaemia.

G H Silk and A J Bartlett, trustees of Cure Leukaemia, also serve as trustees of the Geoff Thomas Foundation.

Included within other debtors as at 31 October 2009 is £39,077 (2008 - £37,886) due from the Geoff Thomas Foundation to Cure Leukaemia on which interest during the year has been charged at an initial rate of 6%, later amended to 1% above bank base rate.

19. POST BALANCE SHEET EVENTS

After the year end the Charity has agreed to make a contribution of £87,000 towards new air conditioning at the Centre for Haematology at the University Hospital, Birmingham.

20. ULTIMATE CONTROLLING PARTY

The charity is under the control of its board of directors who are the trustees of the charity.